



THE CORNY RAINBOW

knowME
BY mimi g

ME2102




Scan QR code for a Sew-Along video tutorial.



@thecornyrainbow



Designed and printed in USA

Average

MISSES' BOMBER CAPE

Suggested Fabrics: Cotton Blends, Denim, Linen Blends, Sweatshirt Fleece, Terry Fleece. **Lining:** Cotton Blends, Polyester Blends. **Interfacing:** Lightweight Fusible.

Notions: One 28" (71cm) medium weight separating zipper (cut to fit), two strips of 7" x 38" (18cm x 97cm) rib knit trim, assorted embroidered patches.

Sizes	XS (4-6)	S (8-10)	M (12-14)	L (16-18)	XL (20-22)	XXL (24-26)
European	30-32	34-36	38-40	42-44	46-48	50-52

BODY MEASUREMENTS: Select pattern size based on body measurements

Bust	29½-30½	31½-32½	34-36	38-40	42-44	46-48	Ins.
Waist	22-23	24-25	26½-28	30-32	34-37	39-41½	"
Hip-9" below waist	31½-32½	33½-34½	36-38	40-42	44-46	48-50	"
Back-neck to waist	15¼-15½	15¾-16	16¼-16½	16¾-17	17¼-17½	17¾-18	"

Bomber Cape

45"*	6¼	6¾	6½	6½	6¾	6¾	Yds.
60"*	5¾	5¾	5½	5½	5¾	5¾	"

Lining - 45"* - ¾ yd.

Interfacing - 20" - 1 yd.

FINISHED GARMENT MEASUREMENTS (Includes Design and Wearing Ease)

Finished back length from base of neck

Bomber Cape	47½	48	48½	49	49½	50	Ins.
--------------------	-----	----	-----	----	-----	----	------

*with nap **without nap

Average

BOMBER CAPE POUR JEUNES FEMMES

Tissus Conseillés: Cotonnades, Denim, Lin mélangés, Jersey molletonné pour sweat-shirt, Tissus éponge. **Doublure:** Cotonnades, Mélanges de polyester. **Entoilage:** Thermocollant léger.

Merçerie: 1 fermeture à glissière séparable de poids moyen de 71cm, 2 bandes de 18cm x 97cm de galon de tricot à côtes, un assortiment d'appliques brodées.

Tailles	TP/XS	P/S	M/M	G/L	TG/XL	TTG/XXL
Françaises	32-34	36-38	40-42	44-46	48-50	52-54
Européen	30-32	34-36	38-40	42-44	46-48	50-52

MESURES DU CORPS: Choisissez la taille du patron basée sur les mesures du corps

Poitrine	75-77	80-83	87-92	97-102	107-112	117-122	cm
Taille	56-58	61-64	67-71	76-81	87-94	99-105	"

Hanches (23cm au-dessous de la taille)

	80-83	85-88	92-97	102-107	112-117	122-127	cm
Dos du cou à la taille	39-39.5	40-40.5	41.5-42	42.5-43	44-44.5	45-45.5	"

Bomber Cape

115cm*	5.7	5.8	5.9	5.9	6.1	6.2	m
150cm*	4.8	4.9	5.0	5.0	5.1	5.3	"

Doublure - 115cm** - 0.3m

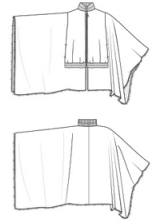
Entoilage - 20" - 0.9m

MESURES DES VÊTEMENTS FINI (Motif et aisance de port compris)

Longueur finie – dos, votre nuque à l'ourlet

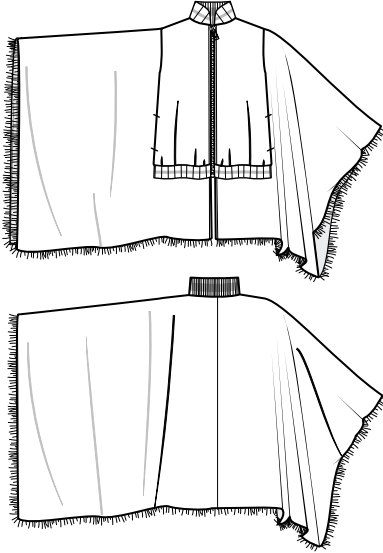
Bomber Cape	121	122	123	124	126	127	cm
--------------------	-----	-----	-----	-----	-----	-----	----

*avec sens **sans sens

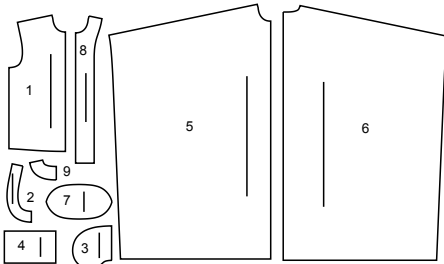




@thecornyrainbow

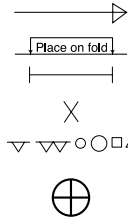


9 PATTERN PIECES



- 1 Upper Front
- 2 Front Armhole Facing
- 3 Pocket
- 4 Front Band
- 5 Front
- 6 Back
- 7 Collar
- 8 Front Facing
- 9 Back Facing

PATTERN MARKINGS



GRAINLINE: Place on straight grain of fabric, parallel to selvage or fold.

FOLDLINE: Place line on fold of fabric.

BUTTONHOLE MARKING: Indicates exact length and placement of buttonholes.

BUTTON MARKING: Indicates button placement.

NOTCHES AND SYMBOLS: For matching seams and construction details.

Indicates the Bustline, Waistline, Hip and/or Biceps. Measurements refer to circumference of Finished Garment (Body Measurement + Wearing Ease + Design Ease). Adjust pattern if necessary. The measurement excludes pleats, tucks, darts and seam allowances.

SEAM ALLOWANCE: 5/8" (1.5cm) included unless otherwise indicated, but not printed on tissue.

ADJUST IF NECESSARY

Lengthen or Shorten at adjustment lines (==) or where indicated on pattern. If substantial length is added, you may need to purchase additional fabric.

TO SHORTEN: Crease along adjustment line. Make a fold half the amount needed. Tape in place.

TO LENGTHEN: Slash between adjustment lines. Spread amount as needed, keeping edges parallel. Tape over paper.

When Alteration lines are not on tissue, lengthen or shorten at lower edge.

CUTTING AND MARKING

SHRINK FABRIC if not labeled pre-shrunk. Press.

CIRCLE LAYOUT for View, Size, Fabric Width.

Use **WITH NAP** layout for fabrics with one-way designs, nap, pile or surface shading. Because most knits have surface shading, a with nap layout is used.

For **DOUBLE THICKNESS (WITH FOLD)** - fold fabric with right sides together.

*** DOUBLE THICKNESS (WITHOUT FOLD)** - For fabrics with nap, fold fabric crosswise, right sides together. Mark as shown. Cut along crosswise fold of fabric (A). Turn upper layer 180° so arrows go in same direction and place over lower layer, right sides together (B).

For **SINGLE THICKNESS** - place fabric right side up. (For Fur Pile fabrics, place pile side down.)

★ Cut other pieces first, allowing enough fabric to cut this piece. Open fabric. For "Cut 1" pieces, cut piece once on single layer of fabric with piece face up on right side of fabric.

Pattern may have cutting lines for several sizes. Select the proper cutting line or pattern pieces for your size.

Before **CUTTING** place all pieces on fabric according to layout. Pin. (**Layouts show approximate position of pattern pieces; position may vary according to your pattern size.**) Cut **ACCURATELY**, cutting notches outward.

Before removing pattern, **TRANSFER MARKINGS** and lines of construction to Wrong Side of fabric, using the Pin and Chalk Pencil method or Tracing Paper and Dressmaker Wheel. Markings traced on right side of fabric should be thread traced.

NOTE: Broken-line boxes (a| b| c|) in layouts represent pieces cut by measurements provided.

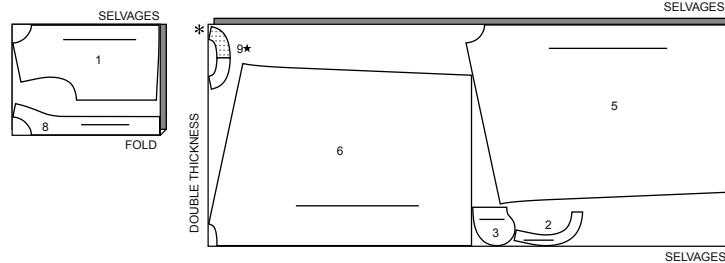
CUTTING LAYOUTS

RIGHT SIDE OF PATTERN	WRONG SIDE OF PATTERN	RIGHT SIDE OF FABRIC	WRONG SIDE OF FABRIC

BOMBER CAPE

USE PIECES: 1 2 3 5 6 8 9

45" (115CM)
WITH NAP
ALL SIZES



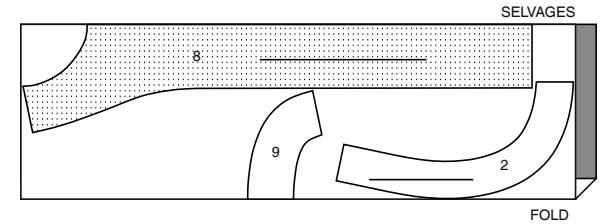
60" (150CM)
WITH NAP
ALL SIZES



INTERFACING

USE PIECES: 2 8 9

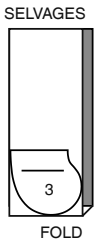
20" (51CM)
ALL SIZES



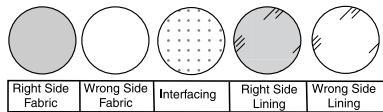
LINING

USE PIECE: 3

45" (115CM)
WITHOUT NAP
ALL SIZES

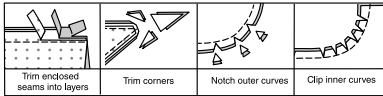


SEWING INFORMATION
FABRIC KEY



SEAM ALLOWANCES

Use 5/8" (1.5cm) seam allowances unless otherwise indicated.



PIN AND FIT

Pin or baste seams, **RIGHT SIDE TOGETHER**, matching notches. Fit garment before stitching major seams.

PRESS

Press seam allowances flat; then open unless otherwise stated. Clip where necessary so they lie flat.

GLOSSARY

Sewing methods in **BOLD TYPE** have Sewing Tutorial Video available. Scan **QR CODE** to watch videos:

EDGESTITCH - Stitch close to finished edge or seam.

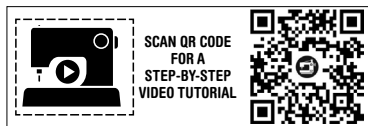
FINISH - Stitch 1/4" (6mm) from raw edge and finish with one of the following: (1) Pink OR (2) Overcast OR (3) Turn in along stitching and stitch close to fold OR (4) Overlock.

NARROW HEM - Turn in hem; press, easing in fullness if necessary. Open out hem. Turn in again so raw edge is along crease; press. Turn in along crease; stitch.

STAYSTITCH - Stitch 1/8" (3mm) from seamline in seam allowance (usually 1/2" (13mm) from raw edge).

TOPSTITCH - On outside, stitch 1/4" (6mm) from edge, seam or previous stitching, using presser foot as guide, or stitch where indicated in instructions.

UNDERSTITCH - Open out facing or underside of garment; stitch to seam allowance close to seam.



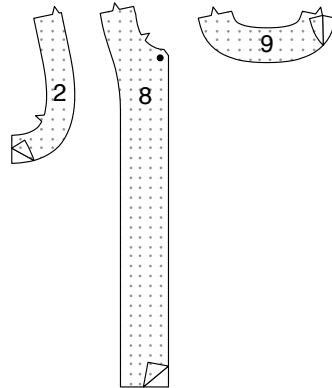
@thecornyrainbow

SEWING DIRECTIONS

BOMBER CAPE A

INTERFACING

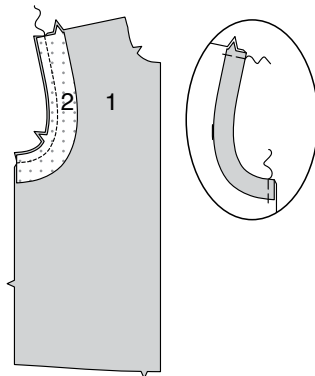
1. Trim corners of **INTERFACING**, as shown. Fuse **INTERFACING** to wrong side of each matching **FABRIC** section, following manufacturer's instructions.



FRONT AND BACK

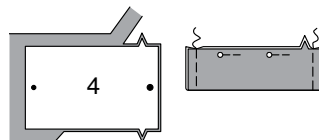
2. With **RIGHT** sides together, pin **FRONT ARMHOLE FACING** (2) to **UPPER FRONT** (1) at armhole edge, matching notches. Stitch. Trim.

Turn facing to **INSIDE**. Press. Baste shoulder and side edges.

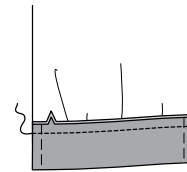


3. Open out rib knit section if necessary. Pin **FRONT BAND** (4) to rib knit strip, centering over fold. Transfer markings. Cut out sections.

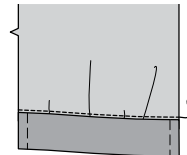
With **WRONG** sides together, fold front band in half lengthwise. Pin upper raw edges. Baste ends.



4. Pin front band to lower edge of upper front, matching notches. Stitch, stretching band to fit. Trim. Press seam up.

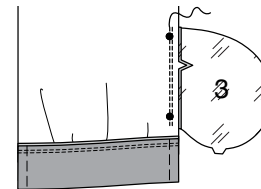


5. **EDGESTITCH** upper front seam, as shown.

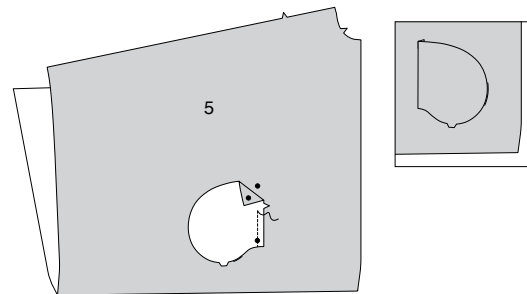


6. Pin one **POCKET** (3) section (lining) to each upper front at side, matching large dots and notches. Stitch. Press seam toward pocket.

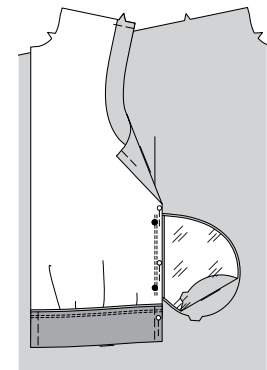
UNDERSTITCH pocket.



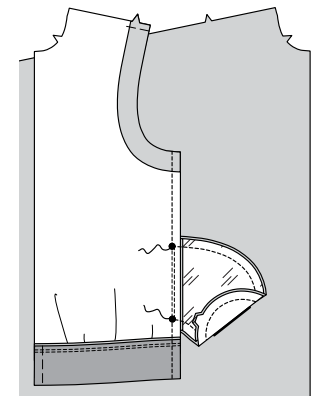
7. With **RIGHT** sides together, pin one **POCKET** section (fabric) to each **FRONT** (5) at side, matching large dots, having straight edge toward front edge. Stitch. Press pocket toward front, over seam.



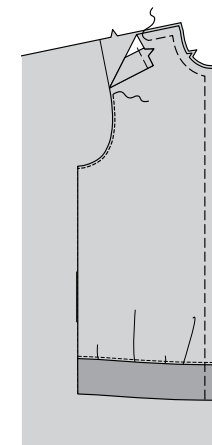
8. With **RIGHT** sides together, pin upper front to front, matching dots, placing side seamline along side placement lines, as shown.



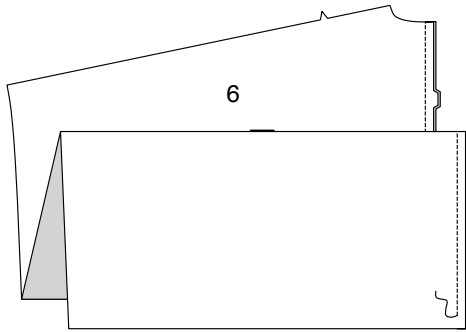
9. Stitch along seamline, leaving open between large dots. Stitch pocket edges together to side seam.



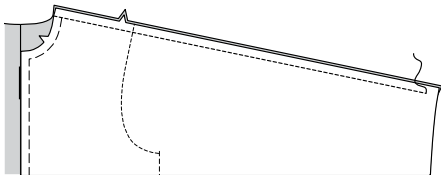
10. Turn upper front toward front over seam, placing armhole edge along remaining placement line; press. Pin in place. **EDGESTITCH** armhole edge. Baste raw edges.



11. Stitch BACK (6) sections together at center back, ending stitching approximately 1"(2.5cm) from lower edge.



12. Stitch front to back at overarm edges, ending stitching approximately 1"(2.5cm) from lower edge.

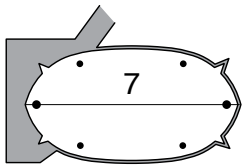


COLLAR AND FINISHING

13. STAYSTITCH neck edge in direction of arrows.



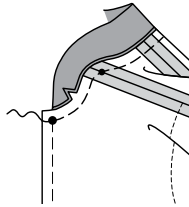
14. Open out rib knit section if necessary. Pin COLLAR (7) to rib knit strip, matching foldline to fold on strip. Transfer markings. Cut out section.



15. With wrong sides together, fold collar along foldline; press lightly. Pin raw edges together.

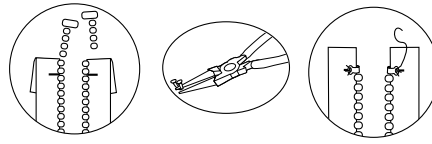


16. Pin collar to neck edge, matching centers and large dots, placing small dots at shoulder seams. Baste, stretching collar to fit.

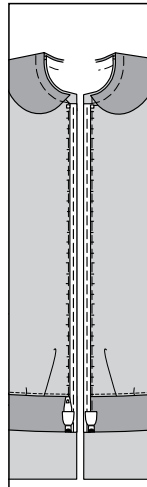


NOTE: It may be necessary to shorten zipper. To make new zipper stop, place closed zipper along opening edge and zipper stop at lower large dot. Mark placement of new zipper stop 1/8"(3mm) below upper seamline.

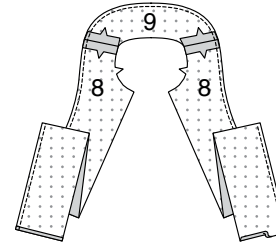
17. Remove teeth above marking for new zipper stop. Bend a straight metal eye with pliers and sew securely to each tape at new marking. OR make several whipstitches over tape at marking.



18. Open and separate zipper. On outside, pin zipper, face down, along front opening edges, placing zipper stop at lower large dot and zipper teeth over seamline. Baste.



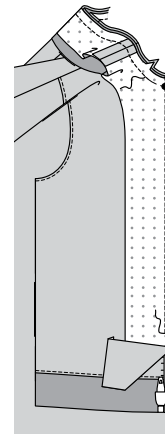
19. Stitch FRONT FACING (8) sections to BACK FACING (9) at shoulder edges.



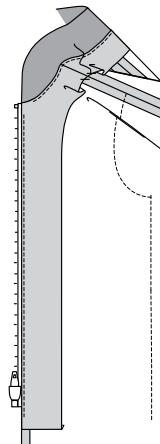
FINISH inner edge of facing, as shown. Turn under 1/4"(6mm) on lower edges of facing. Press.

20. With RIGHT sides together, pin facing to front opening and neck edges, over zipper and collar. Baste. Stitch front along seamlines, using a zipper foot. Stitch neck edge. Trim neck edge.

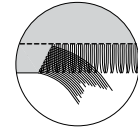
UNDERSTITCH facing, ending stitching 1"(2.5cm) from lower edge.



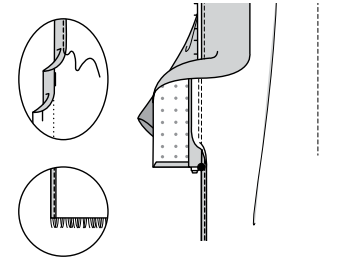
21. Turn facing to inside and zipper teeth out. Press. Tack facing to shoulder seam allowances.



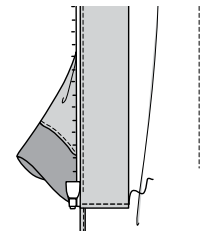
22. Stitch along lower edges 1"(2.5cm) above raw edge, as shown. To create fringe, remove threads from lower edges of cape. To remove, pull out fabric thread one at a time, up to stitching and in the same direction.



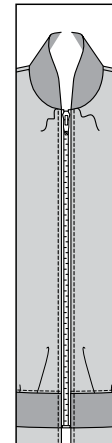
23. Open out lower edges of facing. Make **NARROW HEM** along lower front opening edges, tapering to nothing above large dot, keeping upper front free.



24. Turn in facing. **EDGE STITCH** pressed edges, keeping upper front free.



25. **TOPSTITCH** front opening edges, as shown.



Embellish finished garment with purchased embroidered patches, as desired.



Congrats!

You've completed your sewing adventure

**SHARE
YOUR** LOOK



Post your pattern and tag us
[@simplicity_creative_group](#) and [#knowMepatterns](#)
for a chance to be featured on our social media.

Look for more PDF patterns at [simplicity.com](https://www.simplicity.com)

Have a question or need help with your sewing project call us at
1-800-782-0323

