



LYDIA NAOMI

knowME[™]

BY **minnie g**

ME2100



Scan QR code for a Sew-Along video tutorial.



@Lydianaomistudio



Designed and printed in USA

Average

MISSES' BOMBER JACKET

Suggested Fabrics: Boiled Wool, Corduroy, Cotton Blends, Melton, Soft Denim, Stretch Wovens, Wool Blends. **Lining:** Cotton Blends, Polyester Blends. **Interfacing:** Lightweight Fusible.

Notions: One 22" (56cm) medium weight separating zipper (cut to fit), 1½ yds. (1.4m) of 2" (5cm) elastic, two 7" (18cm) medium weight zippers.

Sizes	8	10	12	14	16	18	20	22	24	26
European	34	36	38	40	42	44	46	48	50	52

BODY MEASUREMENTS: Select pattern size based on body measurements

Bust	31½	32½	34	36	38	40	42	44	46	48	Ins.
Waist	24	25	26½	28	30	32	34	37	39	41	"
Hip-9" below waist	33½	34½	36	38	40	42	44	46	48	50	"
Back-neck to waist	15¾	16	16¼	16½	16¾	17	17¼	17½	17¾	18	"

Jacket											
45"*	2¾	2¾	2¾	2¾	2¾	2¾	2¾	2¾	2¾	2¾	Yds.
60"*	1¾	1¾	1¾	1¾	1¾	1¾	1¾	2¾	2¼	2¼	"
Lining											
45"***	1¾	2	2	2	2	2	2½	2½	2½	2½	Yds.
Interfacing - 20" - 7½ yd.											

FINISHED GARMENT MEASUREMENTS (Includes Design and Wearing Ease)

Bust	46	47	48½	50½	52½	54½	56½	58½	60½	62½	Ins.
Finished back length from base of neck											
Jacket (incl. casing)	24¼	24½	24¾	25	25¼	25½	25¾	26	26¼	26½	Ins.

*with nap **without nap

Moins Facile

BLOUSON D'AVIATEUR POUR JEUNES FEMMES

Tissus Conseillés: Laine bouillie, Velours côtelé, Cotonnades, Melton, Denim souple, Tissus tissés extensibles, Lainages. **Doublure:** Cotonnades, Mélanges de polyester. **Entoilage:** Thermocollant léger.

Mercerie: 1 fermeture à glissière séparable de poids moyen de 56cm, 1.4m d'élastique de 5cm, 2 fermetures à glissière de poids moyen de 18cm.

Tailles	8	10	12	14	16	18	20	22	24	26
Françaises	36	38	40	42	44	46	48	50	52	54
Européen	34	36	38	40	42	44	46	48	50	52

MESURES DU CORPS: Choisissez la taille du patron basée sur les mesures du corps

Poitrine	80	83	87	92	97	102	107	112	117	122	cm
Taille	61	64	67	71	76	81	87	94	99	104	"
Hanches (23cm au-dessous de la taille)	85	88	92	97	102	107	112	117	122	127	cm
Dos du cou à la taille	40	40.5	41.5	42	42.5	43	44	44.5	45	46	"

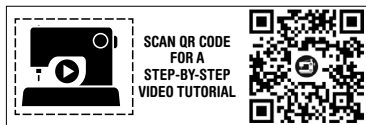
Veste											
115cm*	2.2	2.2	2.2	2.2	2.2	2.5	2.6	2.6	2.6	2.6	m
150cm*	1.7	1.7	1.7	1.7	1.7	1.7	1.7	1.9	2.1	2.1	"
Doublure											
115cm**	1.7	1.8	1.8	1.8	1.8	1.8	1.9	1.9	1.9	1.9	m
Entoilage - 51cm - 0.7m											

MESURES DES VÊTEMENTS FINI (Motif et aisance de port compris)

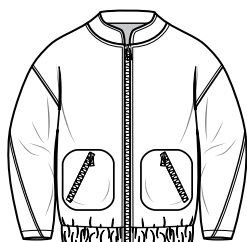
Poitrine	117	119	123	128	133	138	144	149	154	159	cm
Longueur finie – dos, votre nuque à l'ourlet											
Veste (y compris le boîtier)	62	62	63	64	64	65	65	66	67	67	cm

*avec sens **sans sens

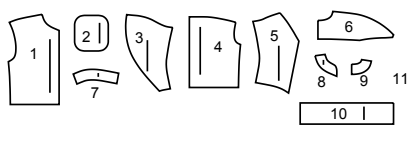




@duana_m_chandler

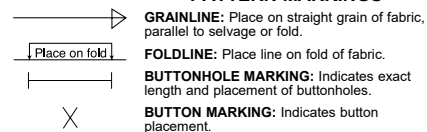


11 PATTERN PIECES



- 1 Front
- 2 Pocket
- 3 Sleeve Front
- 4 Back
- 5 Sleeve Back
- 6 Yoke Back
- 7 Sleeve Facing
- 8 Front Neckband
- 9 Back Neckband
- 10 Casing
- 11 Guide for Elastic

PATTERN MARKINGS



NOTCHES AND SYMBOLS: For matching seams and construction details.

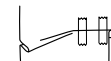
Indicates the Bustline, Waistline, Hip and/or Biceps. Measurements refer to circumference of Finished Garment (Body Measurement + Wearing Ease + Design Ease). Adjust pattern if necessary. The measurement excludes pleats, tucks, darts and seam allowances.

SEAM ALLOWANCE: 5/8" (1.5cm) included unless otherwise indicated, but not printed on tissue.

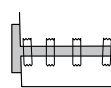
ADJUST IF NECESSARY

Lengthen or Shorten at adjustment lines (==) or where indicated on pattern. If substantial length is added, you may need to purchase additional fabric.

TO SHORTEN: Crease along adjustment line. Make a fold half the amount needed. Tape in place.



TO LENGTHEN: Slash between adjustment lines. Spread amount as needed, keeping edges parallel. Tape over paper.



When Alteration lines are not on tissue, lengthen or shorten at lower edge.

CUTTING AND MARKING

SHRINK FABRIC if not labeled pre-shrunk. Press.

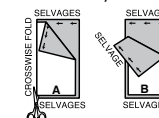
CIRCLE LAYOUT for View, Size, Fabric Width.

Use **WITH NAP** layout for fabrics with one-way designs, nap, pile or surface shading. Because most knits have surface shading, a with nap layout is used.

For **DOUBLE THICKNESS (WITH FOLD)** - fold fabric with right sides together.

*** DOUBLE THICKNESS (WITHOUT FOLD)** - For fabrics with nap, fold fabric crosswise, right sides together. Mark as shown. Cut along crosswise fold of fabric (A). Turn upper layer 180° so arrows go in same direction and place over lower layer, right sides together (B).

For **SINGLE THICKNESS** - place fabric right side up. (For Fur Pile fabrics, place pile side down.)



★ Cut other pieces first, allowing enough fabric to cut this piece. Open fabric. For "Cut 1" pieces, cut piece once on single layer of fabric with piece face up on right side of fabric.

Pattern may have cutting lines for several sizes. Select the proper cutting line or pattern pieces for your size.

Before **CUTTING** place all pieces on fabric according to layout. Pin. (Layouts show approximate position of pattern pieces; position may vary according to your pattern size.) Cut **ACCURATELY**, cutting notches outward.

Before removing pattern, **TRANSFER MARKINGS** and lines of construction to Wrong Side of fabric, using the Pin and Chalk Pencil method or Tracing Paper and Dressmaker Wheel. Markings needed on right side of fabric should be thread traced.

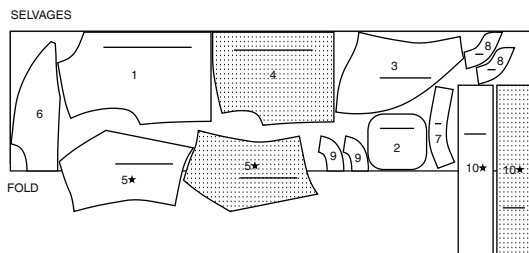
NOTE: Broken-line boxes (at bl cl) in layouts represent pieces cut by measurements provided.

CUTTING LAYOUTS

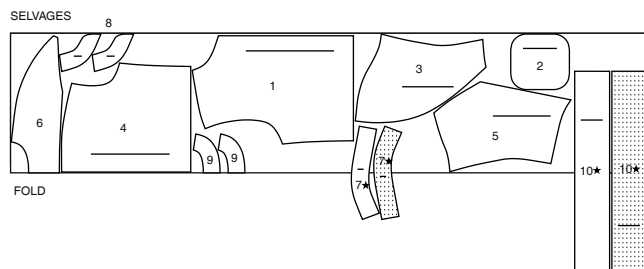
BOMBER JACKET

USE PIECES: 1 2 3 4 5 6 7 8 9 10

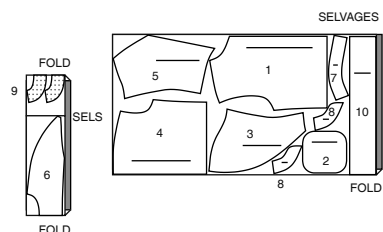
45" (115CM)
WITH NAP
SIZES 8 10 12 14 16



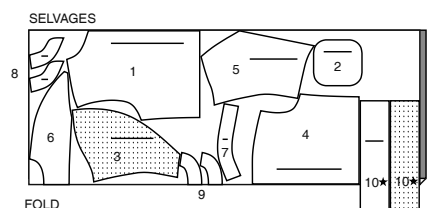
45" (115CM)
WITH NAP
SIZES 18 20 22 24 26



60" (150CM)
WITH NAP
SIZES 8 10 12 14 16 18 20



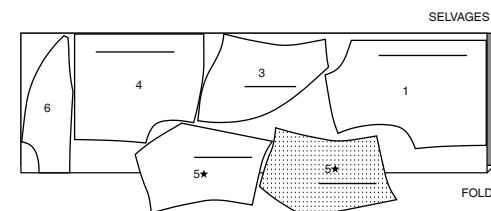
60" (150CM)
WITH NAP
SIZES 22 24 26



LINING

USE PIECES: 1 3 4 5 6

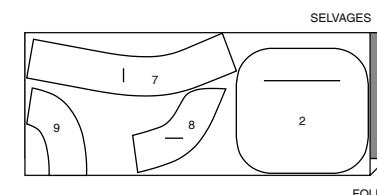
45" (115CM)
WITHOUT NAP
ALL SIZES



INTERFACING

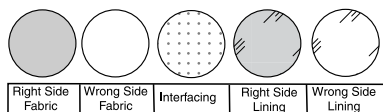
USE PIECES: 2 7 8 9

20" (51CM)
ALL SIZES



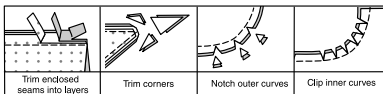
SEWING INFORMATION

FABRIC KEY



SEAM ALLOWANCES

Use 5/8" (1.5cm) seam allowances unless otherwise indicated.



PIN AND FIT

Pin or baste seams, **RIGHT SIDE TOGETHER**, matching notches. Fit garment before stitching major seams.

PRESS

Press seam allowances flat; then open unless otherwise stated. Clip where necessary so they lie flat.

GLOSSARY

Sewing methods in **BOLD TYPE** have Sewing Tutorial Video available. Scan **QR CODE** to watch videos:

EDGESTITCH - Stitch close to finished edge or seam.

REINFORCE - Stitch along seamline where indicated in sewing instructions, using small machine stitches.

STAYSTITCH - Stitch 1/2" (1.3mm) from seamline in seam allowance.

STITCH IN THE DITCH - On **OUTSIDE**, stitch in the ditch or "groove of seam".

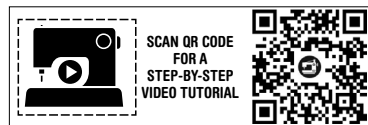
TOPSTITCH - On outside, stitch 1/4" (6mm) from edge, seam or previous stitching, using presser foot as guide, or stitch where indicated in instructions.

UNDERSTITCH - see how to understitch video.

FINISH - Stitch 1/4" (6mm) from raw edge and finish with one of the following: (1) Pink OR (2) Overcast OR (3) Turn in along stitching and stitch close to fold OR (4) Overlock.

OPTIONAL FOR HEMS: Apply Seam Binding.

SLIPSTITCH - Slide needle through a folded edge, then pick up a thread of underneath fabric.



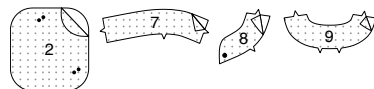
@duana_m_chandler

SEWING DIRECTIONS

BOMBER JACKET A

INTERFACING

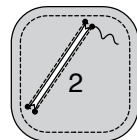
1. Pin **INTERFACING** to wrong side of each matching **FABRIC** section. Fuse, following manufacturer's instructions.



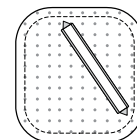
FRONT, BACK AND SLEEVE

2. **STAYSTITCH** outer edge of **POCKET** (2).

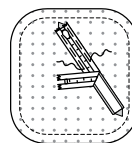
REINFORCE pocket along stitching lines. Slash along line between stitching, clipping diagonally to small dots.



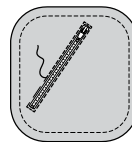
3. Turn in pocket opening edges along stitching. Press.



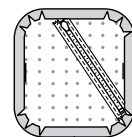
4. Center closed zipper, face up, under pocket opening edges, placing zipper stop at lower end, as shown. Baste.



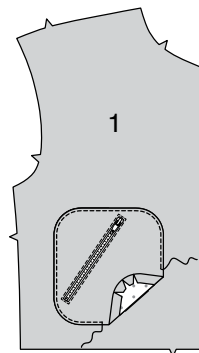
5. **EDGESTITCH** along basting, using a zipper foot.



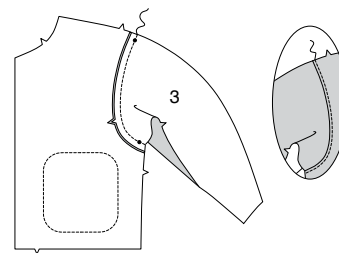
6. Turn in seam allowances along outer edge of pocket, clipping pocket seam allowances where necessary. Press.



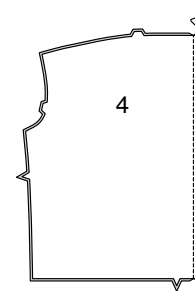
7. With **RIGHT** sides up, pin pocket to **FRONT** (1), as shown, placing pressed edges along pocket line. **EDGESTITCH** pressed edges.



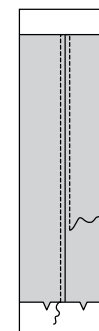
8. With **RIGHT** sides together, pin **SLEEVE FRONT** (3) to front at armhole edge, matching notches and small dots. Stitch. Press seam toward front. **TOPSTITCH** front seam.



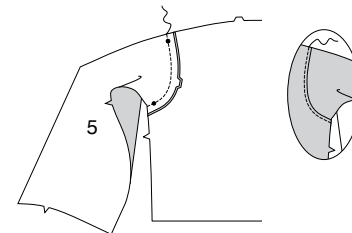
9. Stitch **BACK** (4) sections together at center back.



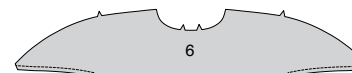
10. **TOPSTITCH** each side of center back seam, as shown.



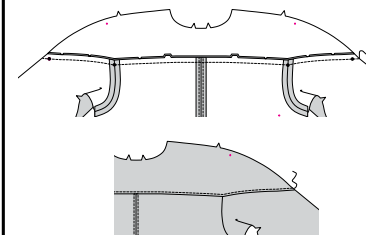
11. With **RIGHT** sides together, pin **SLEEVE BACK** (5) to back at armhole edge, matching notches and small dots. Stitch. Press seam toward back. **TOPSTITCH** back seam.



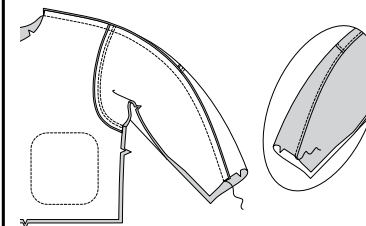
12. **STAYSTITCH** lower side edges of **YOKE BACK** (6), as shown.



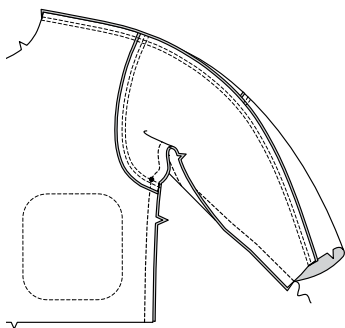
13. With **RIGHT** sides together, pin yoke back to upper edge of back and sleeve back, matching centers, notches and small dots, clipping yoke back where necessary. Baste. Stitch. Press seam toward yoke back. **TOPSTITCH** yoke seam.



14. Stitch front to back at overarm edge. Press seam toward back. **TOPSTITCH** back seam.

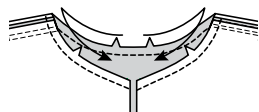


15. Pin front and back together at sides; pin sleeve edges together. Stitch in one continuous seam, pivoting at small dot.



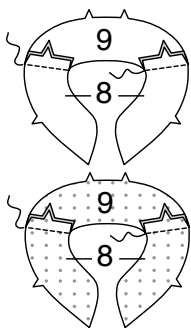
NECK BAND AND FINISHING

16. STAYSTITCH neck edge, in direction of arrows.

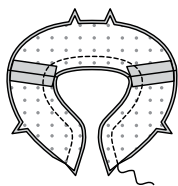


17. Stitch uninterfaced FRONT NECK BAND (8) sections to BACK NECK BAND (9) at shoulder edges.

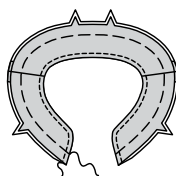
For facing, stitch interfaced neck band sections together in same manner.



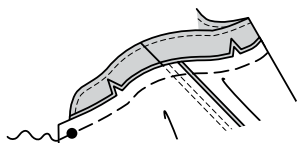
18. With RIGHT sides together, pin neck band facing to neck band. Stitch upper edge, unnotched. Trim.



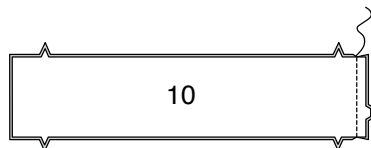
19. Turn. Press. Baste raw edges. **TOPSTITCH** finished edge.



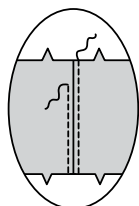
20. Pin neck band to neck edge of jacket, matching centers and large dots. Baste.



21. Stitch CASING (10) sections together at center back.



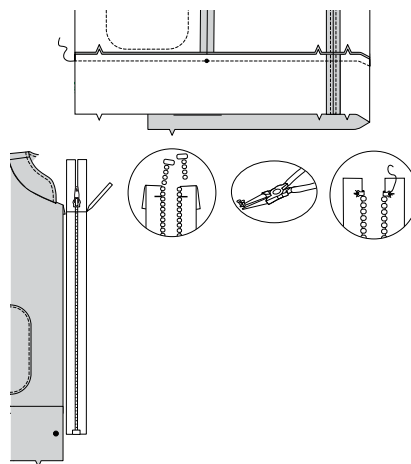
22. **TOPSTITCH** each side of center back seam, as shown.



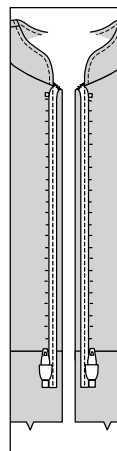
23. Pin casing to lower edge of jacket, matching centers, placing small dots at side seams. Stitch.

NOTE: It may be necessary to shorten zipper. To make new zipper stop, place closed zipper along opening edge, placing lower zipper stop at large dot on casing. Mark placement of new zipper stop 1/8"(3mm) below seamline.

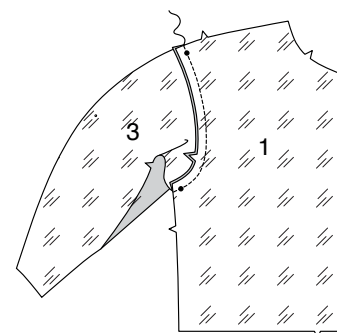
Remove teeth above marking for new zipper stop. Bend a straight metal eye with pliers and sew securely to each tape at new marking.



24. Open and separate zipper. On outside, pin zipper, face down, along front opening edges, placing zipper teeth a scant 1/4"(6mm) over seamline. Taper zipper to nothing at upper edge. Stitch along seamline.



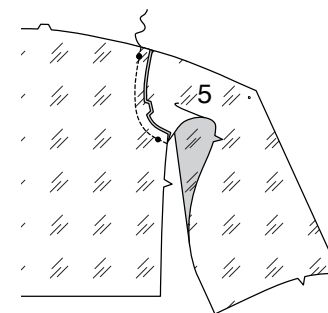
25. With RIGHT sides together, pin sleeve front LINING (3) to front LINING (1) at armhole edge, matching notches and small dots. Stitch.



26. Stitch back LINING (4) sections together at center back.



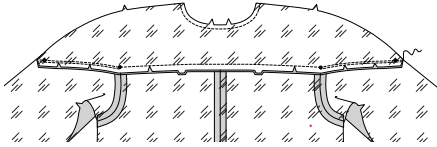
27. With RIGHT sides together, pin SLEEVE BACK LINING (5) to back lining at armhole edge, matching notches and small dots. Stitch.



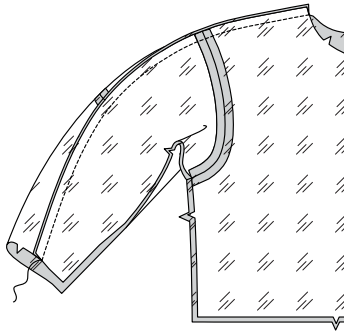
28. STAYSTITCH lower side edges of yoke back LINING (6), as shown.



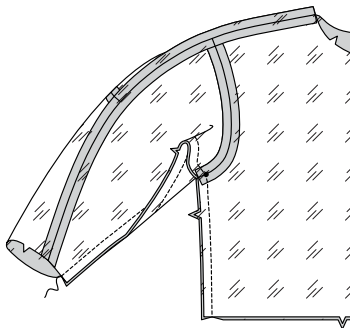
29. With **RIGHT** sides together, pin yoke back lining to upper edge of back lining and sleeve back lining, matching centers, notches and small dots, clipping yoke back lining where necessary. Baste. Stitch.



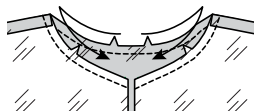
30. Stitch front lining to back lining at overarm edge.



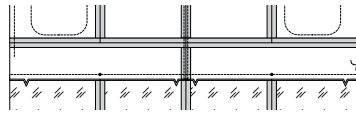
31. Pin front lining and back lining together at sides; pin sleeve edges together. Stitch in one continuous seam, pivoting at small dot.



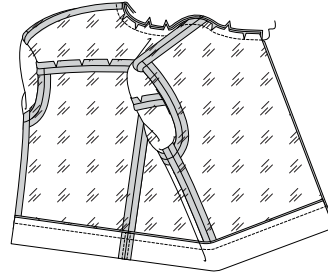
32. **STAYSTITCH** neck edge of lining, in direction of arrows.



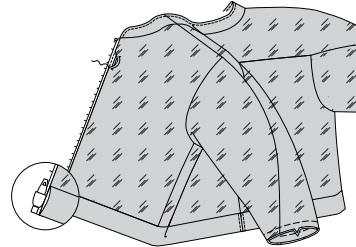
33. Pin lining to lower edge of casing, as shown, matching centers, placing small dots at side seams. Stitch.



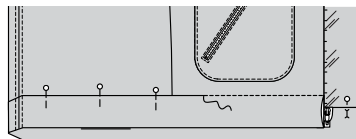
34. With right sides together, pin lining to jacket at neck edge, matching centers, folding casing in half. Pin front opening and neck edges, clipping neck edge of lining where necessary. Stitch neck edge. Trim.



35. Turn lining to inside through front opening edge. Slip sleeve lining in place; press. Baste lower edge of sleeve. Turn in front opening edges of lining and casing to clear zipper teeth. Press. **SLIPSTITCH** to zipper tape, ending at casing seam, as shown.

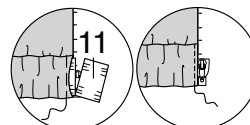


36. On **OUTSIDE**, **STITCH IN DITCH** of casing seam through all layers.

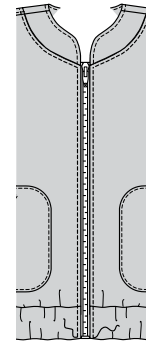


37. Cut a piece of elastic the length of **GUIDE FOR ELASTIC (11)**. Insert elastic through casing, extending ends 5/8"(1.5cm) past casing edges. Baste. Trim ends of elastic close to basting.

EDGESTITCH ends of casing, catching elastic in stitching.



38. **TOPSTITCH** front opening and neck edges.

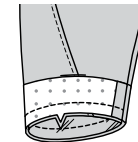


39. Stitch ends of **SLEEVE FACING (7)** together.

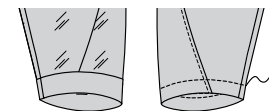
FINISH upper unnotched edge.



40. With **RIGHT** sides together, pin sleeve facing to lower edge of sleeve, matching notches and seam to underarm seam. Stitch. Trim.



41. Turn facing to inside. Press. **TOPSTITCH** sleeve 1"(2.5cm) above lower edge, as shown.





Congrats!

You've completed your sewing adventure

SHARE YOUR LOOK



Post your pattern and tag us
[@simplicity_creative_group](#) and [#knowMepatterns](#)
for a chance to be featured on our social media.

Look for more PDF patterns at [simplicity.com](https://www.simplicity.com)

Have a question or need help with your sewing project call us at
1-800-782-0323



KnowMe ©2024 a division of IG Design Group Americas Inc. • Atlanta, GA 30342 USA www.thedesigngroup.com • All Rights Reserved. www.mccall.com • Made in the U.S.A. Fabriqué aux États-Unis.
To be used for individual private home use only and not for commercial or manufacturing purposes. • A usage privé seulement et non à des fins commerciales ou de production en série. • Para uso privado solamente, no se puede utilizar con propósitos de comercialización o de producción en serie.