



THE STITCH FITZ

knowME™
BY MIMI G

ME2099

Scan QR code
for a Sew-Along
video tutorial.



@thestitchfitz

Designed and
printed in USA

Average

CHILDREN'S AND MISSES' JACKET

Suggested Fabrics: Cotton Blends, Double Knit, Nylon, Ponte, Scuba, Sweatshirt Fleece. **Lining:** Cotton Blends, Polyester Blends. **Interfacing:** Lightweight Fusible.

Notions: Medium weight separating zipper: 20" (51cm - cut to fit) for Children, 24" (61cm - cut to fit) for Misses, two ¾" (1cm) grommets, four barrel stoppers, ¼" (6mm) elastic cord: 1½ yds. (1.4m) for Children, 2½ yds. (1.9m) for Misses, hook and loop tape: 3" (8cm) length of 1" (2.5cm) wide for Children, 4" (10cm) length of 1½" (4cm) wide for Misses, five ¾" (1.5cm) heavy duty pronged snaps.

Sizes	CHILDREN'S			MISSES'			
	S (3-4)	M (5-6)	L (7-8)	S (8-10)	M (12-14)	L (16-18)	XL (20-22)
European	—	—	—	34-36	38-40	42-44	46-48

BODY MEASUREMENTS: Select pattern size based on body measurements

Chest/ Bust	22-23	24-25	26-27	31½-32½	34-36	38-40	42-44	Ins.
Waist	20½-21	21½-22	23-23½	24-25	26½-28	30-32	34-37	"
Hip	24	25-26	27-28	33½-34½	36-38	40-42	44-46	"
Back-neck to waist	9-9½	10-10½	11½-12	15¼-16	16¼-16½	16¾-17	17¼-17½	"
Approx. Height	38-41	44-47	50-52	—	—	—	—	"
Jacket	45**	1	1	1	1¾	2	2½	Yds.
	60**	¾	¾	¾	1¾	1¾	1¾	"

Contrast (Yoke Front and Back, Pockets, Flaps, Hood Center, Hood Side, Placket)

	45**	1¾	1¾	1¾	1¾	1¾	2	Yds.
	60**	¾	¾	¾	1¾	1¾	1¾	"

Lining

	45***	1	1	1	2	2	2½	Yds.
--	-------	---	---	---	---	---	----	------

Interfacing

	20" ~ ¾ yd. for Children; ¼ yd. for Misses.							
--	---	--	--	--	--	--	--	--

FINISHED GARMENT MEASUREMENTS (Includes Design and Wearing Ease)

Chest/Bus	33	35	37	47	50½	54½	58½	Ins.
Width, lower edge								
Jacket	32½	34½	36½	46½	50	54	58	Ins.
Finished back length from base of neck								
Jacket	12½	13½	14½	21	21½	22	22½	Ins.

*with nap **without nap

**with nap **without nap

Moins Facile

VESTE POUR ENFANTS ET JEUNES FEMMES

Tissus Conseillés: Cotonnades, Tricot double, Nylon, Ponte, Scuba, Jersey molletonné pour sweat-shirt.

Doublure: Cotonnades, Mélanges de polyester. Entoilage: Thermocollant léger.

Mercerie: Fermeture à glissière séparable de poids moyen: 51cm (coupée pour ajuster) pour enfants, 61cm (coupée pour ajuster) pour jeunes femmes, 2 œillets de 1cm, 4 arrêts de cordon cylindre, cordon élastique de 6mm: 1.4m pour enfants, 1.9m pour jeunes femmes, ruban autoagrippant: 8cm de longueur de 2.5cm de large pour enfants, 10cm de longueur de 4cm de large pour jeunes femmes, 5 broches boutons-pression résistant.

Tailles	ENFANTS			JEUNES FEMMES			
	P (3-4)	M (5-6)	G (7-8)	P —	M —	G —	TG —
Françaises	—	—	—	36-38	40-42	44-46	48-50
Européen	—	—	—	34-36	38-40	42-44	46-48

MESURES DU CORPS: Choisissez la taille du patron basée sur les mesures du corps

Poitrine	56-58	61-62	66-69	80-83	87-92	97-102	107-112	cm
Taille	52-53	55-56	58-60	61-64	67-71	76-81	87-94	"
Hanches	61	64-66	69-71	85-88	92-97	102-107	112-117	"
Dos du cou à la taille	23-24	25.5-27	29.5-31	40-40.5	41.5-42	42.5-43	44-44.5	"
Taille approx.	97-104	112-119	127-132	—	—	—	—	"
Veste	115cm*	0.8	0.9	0.9	1.6	1.7	1.7	1.9
	150cm*	0.7	0.8	0.8	1.3	1.3	1.4	1.6

Contraste (Empiècement devant et dos, Poches, Rabats, Milieu de la capuche, Côté de la capuche, Patte)

	115cm	1.0	1.0	1.0	1.6	1.6	1.7	1.7
	150cm*	0.8	0.8	0.8	1.1	1.1	1.3	1.3
Doublure	115cm**	0.8	0.9	0.9	1.8	1.8	1.9	2.2
Entoilage	51cm - 0.6m for Children; 0.8m for Misses.							

MESURES DES VÊTEMENTS FINI (Motif et aisance de port compris)

Poitrine	84	89	94	119	128	138	149	cm
Largeur à l'ourlet								
Veste	83	88	93	118	127	137	147	cm
Longueur finie – dos, votre nuque à l'ourlet								
Veste	32	34	37	53	55	56	57	cm

*avec sens **sans sens

*avec sens **sans sens



English

ME2099

Page 1 of 4

THE STITCH FITZ

knowMETM

BY mimi g

1-800-782-0323

SCAN OR CODE FOR A STEP-BY-STEP VIDEO TUTORIAL

@thestitchfitz

13 PATTERN PIECES

1 YOKE FRONT

2 FRONT TRIM

3 FRONT

4 POCKET

5 FLAP

6 YOKE BACK

7 BACK TRIM

8 BACK

9 SLEEVE

10 SLEEVE TAB

11 HOOD CENTER

12 HOOD SIDE

13 PLACKET

PATTERN MARKINGS

GRAINLINE: Place on straight grain of fabric, parallel to selvage or fold.

FOLDLINE: Place line on fold of fabric.

BUTTONHOLE MARKING: Indicates exact length and placement of buttonholes.

BUTTON MARKING: Indicates button placement.

NOTCHES AND SYMBOLS: For matching seams and construction details.

Indicates the Bustline, Waistline, Hip and/or Biceps. Measurements refer to circumference of Finished Garment (Body Measurement + Wearing Ease + Design Ease). Adjust pattern if necessary. The measurement excludes pleats, tucks, darts and seam allowances.

SEAM ALLOWANCE: 5/8" (1.5cm) included unless otherwise indicated, but not printed on tissue.

ADJUST IF NECESSARY

Lengthen or Shorten at adjustment lines (==) or where indicated on pattern. If substantial length is added, you may need to purchase additional fabric.

TO SHORTEN: Crease along adjustment line. Make a fold half the amount needed. Tape in place.

TO LENGTHEN: Slash between adjustment lines. Spread amount as needed, keeping edges parallel. Tape over paper.

When Alteration lines are not on tissue, lengthen or shorten at lower edge.

CUTTING AND MARKING

★ Cut other pieces first, allowing enough fabric to cut this piece. Open fabric. For "Cut 1" pieces, cut piece once on single layer of fabric with piece face up on right side of fabric.

Pattern may have cutting lines for several sizes. Select the proper cutting line or pattern pieces for your size.

Before **CUTTING** place all pieces on fabric according to layout. Pin. (Layouts show approximate position of pattern pieces; position may vary according to your pattern size.) Cut **ACCURATELY**, cutting notches outward.

Before removing pattern, **TRANSFER MARKINGS** and lines of construction to Wrong Side of fabric, using the Pin and Chalk/Pencil method or Tracing Paper and Dressmaker Wheel. Markings needed on right side of fabric should be thread traced.

NOTE: Broken-line boxes (a! b! c!) in layouts represent pieces cut by measurements provided.

CUTTING LAYOUTS

JACKET

USE PIECES: 2 3 7 8 9 10

45" (115CM) WITH NAP
SIZES S M L

45" (115CM) WITH NAP
SIZES XL

60" (150CM) WITH NAP
ALL SIZES

60" (150CM) WITH NAP
ALL SIZES

45" (115CM) WITHOUT NAP
SIZES S M L

45" (115CM) WITHOUT NAP
SIZES XL

60" (150CM) WITH NAP
ALL SIZES

CONTRAST (YOKE FRONT AND BACK, POCKETS, FLAPS, HOOD CENTER, HOOD SIDE, PLACKET)

USE PIECES: 1 4 5 6 11 12 13

45" (115CM) WITH NAP
ALL SIZES

SEWING INFORMATION

FABRIC KEY

Right Side Fabric Wrong Side Fabric Interfacing Right Side Lining Wrong Side Lining

SEAM ALLOWANCES

Use 5/8" (1.5cm) seam allowances unless otherwise indicated.

Trim enclosed seams into layers Trim corners Notch outer curves Clip inner curves

PIN AND FIT

Pin or baste seams, RIGHT SIDE TOGETHER, matching notches. Fit garment before stitching major seams.

PRESS

Press seam allowances flat; then open unless otherwise stated. Clip where necessary so they lie flat.

GLOSSARY

SEWING TERMS APPEARING IN **BOLD TYPE** IN SEWING INSTRUCTIONS ARE EXPLAINED BELOW.

EDGE STITCH - Stitch close to finished edge or seam.

NARROW HEM - Turn in hem; press, easing in fullness if necessary. Open out hem. Turn in again so raw edge is along crease; press. Turn in along crease; stitch.

REINFORCE - Stitch along seamline where indicated in sewing instructions, using small machine stitches.

SLIPSTITCH - Slide needle through a folded edge, then pick up a thread of underneath fabric.

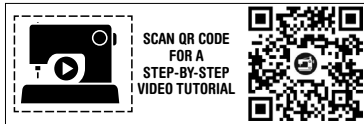
STAYSTITCH - Stitch 1/8" (3mm) from seamline in seam allowance (usually 1/2" (13mm) from raw edge).

© 2024 KnowMe® an IG Design Group Americas, Inc. brand. All Rights Reserved. Printed in U.S.A.

TOPSTITCH - On outside, stitch 1/4" (6mm) from edge, seam or previous stitching, using presser foot as guide, or stitch where indicated in instructions.

PATTERN PIECES WILL BE IDENTIFIED BY NUMBERS THE FIRST TIME THEY ARE USED.

STITCH SEAMS WITH RIGHT SIDES TOGETHER UNLESS OTHERWISE STATED.



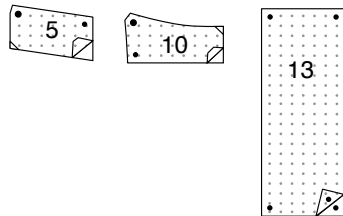
@thestitchfz

SEWING DIRECTIONS

JACKET

INTERFACING

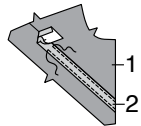
1. Trim corners from INTERFACING, as shown. Fuse INTERFACING to wrong side of each matching FABRIC section, following manufacturer's instructions.



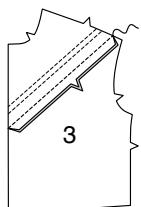
FRONT

2. Turn under 3/8" (1cm) on long edges of FRONT TRIM (2). Press.

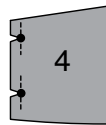
Pin trim to YOKE FRONT (1), RIGHT sides up, placing upper edge of trim along placement line, having raw edges even. **EDGE STITCH** long edges of trim.



3. Pin upper edge of FRONT (3) to lower edge of yoke front matching notches. Stitch.

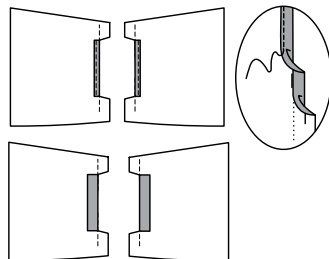


4. REINFORCE side edge of each POCKET (4) through large dots, as shown. Clip to large dots.

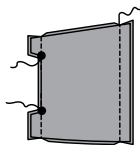


5. For outer pockets, make a 5/8" (1.5cm) **NARROW HEM** between clips on a right and a left pocket.

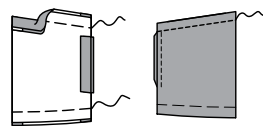
For pocket **FACING**, press under 5/8" (1.5cm) seam allowance between clips on remaining two pockets.



6. With **RIGHT** sides up, pin facing to outer pocket, matching large and small dots, having raw edges even. Stitch side edges leaving open between large dots on shorter side.

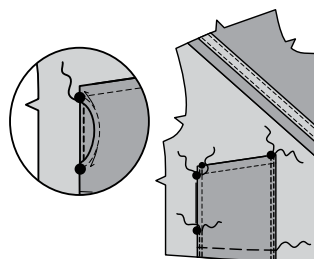


7. Turn facing to inside. Press. Baste raw edges together. Turn under upper edge along foldline. Press. On **OUTSIDE**, stitch 1/2" (1.3cm) from upper edge.

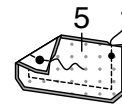


8. Pin pocket to front, matching large and small dots, having lower edges even. **EDGE STITCH** pocket facing to front between large dots, keeping outer pocket free.

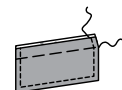
TOPSTITCH side edges of outer pocket to front through all layers, leaving open between large dots. Baste lower edges together.



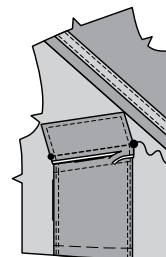
9. For each flap, pin a **FLAP** (5) section with interfacing to one without, **RIGHT** sides together, matching large and small dots. Stitch sides and lower edges, leaving marked edge open. Trim seam and corners.



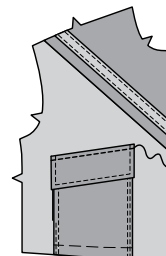
10. Turn **RIGHT** sides out. Press. **TOPSTITCH** finished edges. Baste raw edges together.



11. Pin flap to front placing seamline along placement line with seam allowances below, matching large and small dots. Stitch along seamline. Trim seam to a scant 1/4" (6mm).

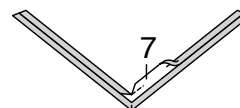


12. Turn flap down over seam allowances. Press. **TOPSTITCH** flap 1/4" (6mm) from upper edge, encasing the seam. Press.

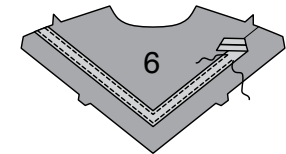


BACK

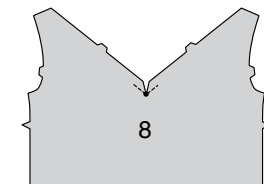
13. REINFORCE inward corner of **BACK TRIM** 7. Clip to inward corner. Turn under 3/8" (1cm) on long edges of trim, folding in fullness at corner. Press.



14. Pin trim to **YOKE BACK** (6), **RIGHT** sides up, placing upper edge of trim along placement line. **EDGE STITCH** long edges of trim.

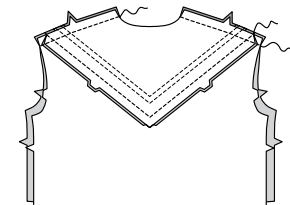


15. REINFORCE inward corner of **BACK** (8), as shown. Clip to inward corner.

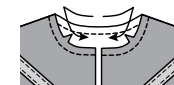


16. Pin upper edge of back to lower edge of yoke back, **RIGHT** sides together, matching notches and centers. Stitch. Press seam toward back.

Stitch back to front at shoulders matching yoke seams and trim.

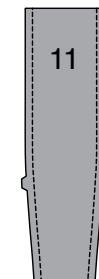


17. STAYSTITCH neck edge of jacket in direction of arrows.

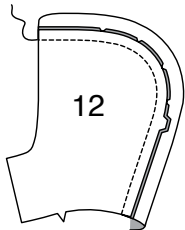


HOOD

18. STAYSTITCH **HOOD CENTER** (11), 1/2" (1.3cm) from side edges.

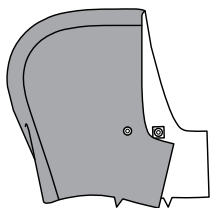


19. Pin two HOOD SIDE (12) sections to one hood center, RIGHT sides together, matching notches, clipping hood center as needed. Stitch. For FACINGS, stitch remaining hood sections together in same manner and set aside.

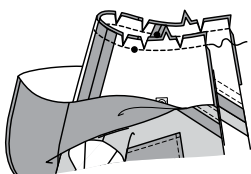


20. To reinforce underside of small dot on hood, cut two 3/4" x 3/4" (2cm x 2cm) pieces of remnant interfacing. On WRONG side, center interfacing over large dots. Fuse in place following manufacturer's instructions.

On OUTSIDE, apply eyelets to front edge of hood, centering over large dots, following manufacturer's directions.



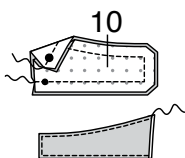
21. With RIGHT sides together, pin hood to jacket neck edge, matching center backs, notches, and small dots to shoulder seams, clipping jacket neck edge where needed. Baste. Stitch. Trim seam, clip curves.



SLEEVE

22. For each tab, pin a SLEEVE TAB (10) section with interfacing to one without. Stitch outer edges leaving marked edge open. Trim seam and corners.

Turn tab RIGHT side out. Press. **EDGESTITCH** finished edges.

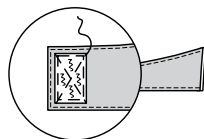


23. Cut a piece of 1"(2.5cm) wide hook and loop tape the following lengths.

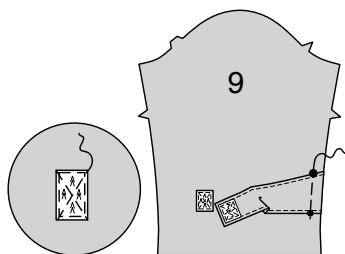
For Misses cut 4"(10cm) long.

For Children cut 3"(2.5cm) long.

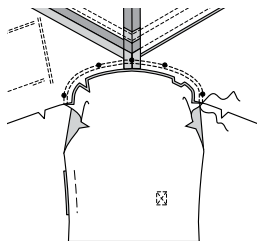
Separate tape. Pin loop half of tape to end of tab. Stitch close to edges and diagonally through center.



24. With hook and loop tape facing up, pin tab to RIGHT side of SLEEVE (9) matching large and small dots. Baste. Pin hook half of tape to RIGHT side of sleeve within placement lines. Stitch close to edges and diagonally through center.

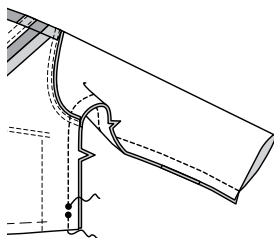


25. With RIGHT sides together, pin sleeve to armhole with center small dot at shoulder seam, matching notches, and remaining small dots. Baste. Stitch. Stitch again 1/4"(6mm) away in seam allowances. Trim seam allowances close to second stitching. Turn seam toward sleeve.



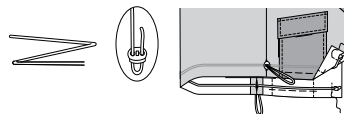
SIDE SEAMS AND ELASTIC CORDING

26. Pin front to back at sides. Pin sleeve edges together, matching armhole seam. Stitch side edges leaving open between small and large dots, continuing to stitch to lower edge of sleeve.



27. Cut elastic cord a comfortable hip measurement, plus 20"(51cm).

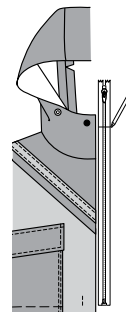
Knot one end of cording and pin to WRONG side of jacket, just over front placement line, 1"(2.5cm) above lower edge. Thread cording through opening at side seam, through one drawstring stopper and back into same side seam opening, leaving a loop on the OUTSIDE. Thread cording around back and out through opposite side seam opening, through remaining drawstring stopper and back through same side seam opening, leaving a loop on the outside. Thread cord along WRONG side of remaining front. Knot end and pin to front edge, 1"(2.5cm) above lower edge, just over front placement line. Stitch across ends 1"(2.5cm) from front edges.



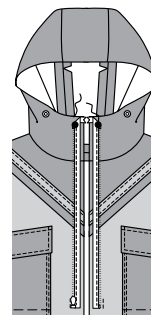
ZIPPER

28. NOTE: It may be necessary to shorten zipper. To make new zipper stop, place zipper along front opening edge with bottom zipper stop 3/4"(2cm) above lower edge of jacket. Mark placement of new top zipper stop slightly below large dot on hood. Remove teeth above marking for new top zipper stop.

Use pliers to bend a straight metal eye for new zipper stop. Sew eye securely to each tape at new marking. **Note:** Make sure the eye is large enough to prevent the slider from passing.

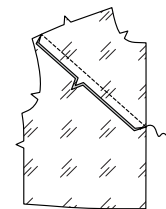


29. Open and separate zipper. On OUTSIDE, pin zipper (face down) to right front along front opening edge with top stop at upper large dot and bottom stop 1/8"(3mm) above lower seamline, placing zipper teeth 1/4"(6mm) over seamline, as shown. Turn upper edge of zipper tape diagonally at large dot and hand sew in place. Baste zipper in place. Pin/baste other side of zipper to left front in same manner. Stitch along seamline using a zipper foot.

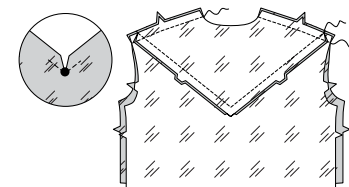


LINING AND HOOD FACING

30. Pin upper edge of front LINING to lower edge of yoke front LINING matching notches. Stitch.



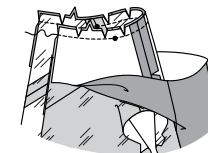
31. REINFORCE and clip inward corner of back LINING in same manner as jacket. Pin upper edge of back lining to lower edge of yoke back LINING, RIGHT sides together, matching notches and centers. Stitch. Press seam toward back. Stitch yoke back lining to yoke front lining at shoulders.



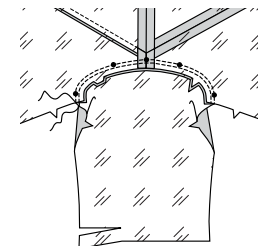
32. STAYSTITCH neck edge of jacket lining, in direction of arrows.



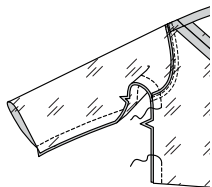
33. With RIGHT sides together, pin hood facing to lining neck edge, matching center backs, notches, and small dots to shoulder seams, clipping lining neck edge where needed. Baste. Stitch. Trim seam, clip curves.



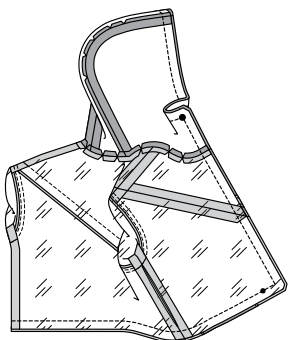
34. Trim away 1"(2.5cm) from lower edge of sleeve LINING. With RIGHT sides together, pin sleeve lining to armhole with center small dot at shoulder seam, matching notches, and remaining small dots. Baste. Stitch. Stitch again 1/4"(6mm) away in seam allowances. Trim seam allowances close to second stitching. Turn seam toward sleeve lining.



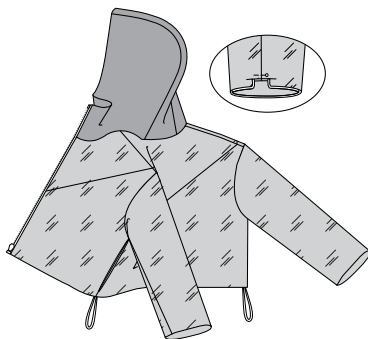
35. Pin front lining to back lining at sides. Pin sleeve lining edges together matching armhole seam. Stitch side edges, leaving an opening on one side, continuing to stitch to lower edge of sleeves.



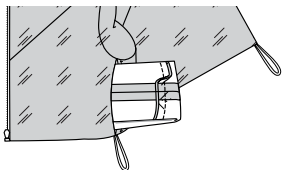
36. With RIGHT sides together, pin hood facing and lining to jacket. Matching center backs, notches, large dots, and seams. Stitch front and lower edges using a zipper foot. Trim seams and corners. Do not trim zipper tape.



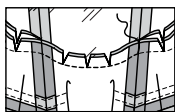
37. Turn jacket RIGHT side out. Press. With WRONG sides together, pin lower edge of sleeve and sleeve lining together, matching seams. To anchor seam, turn in seam allowance at seam and pin so the seam allowances are RIGHT sides together.



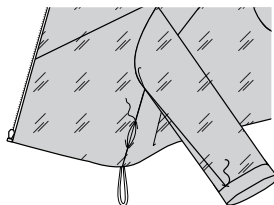
38. Pull the sleeves through side opening and pin raw edges of sleeve and lining RIGHT sides together. Remove anchor pin. Stitch. Trim.



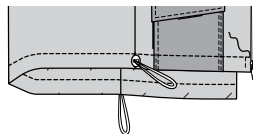
39. Reach in through opening and pull out neck edges of jacket and lining. Stitch back neck seam allowances of jacket and lining together between shoulder seams.



40. Turn jacket RIGHT side out, slipping sleeve lining into place. Tack sleeve hem to seam allowance. **SLIPSTITCH** opening in lining.

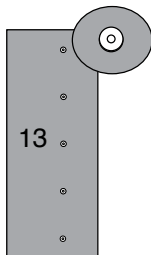


41. To form casing at lower edge of jacket, stitch 1"(2.5cm) above lower edge between zipper stitching, being careful not to catch elastic cording.

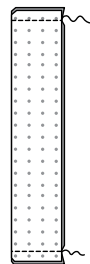


FINISHING

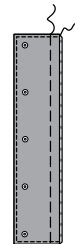
42. Apply ball section of snaps to RIGHT side of **PLACKET** (13) at markings following manufacturer's directions.



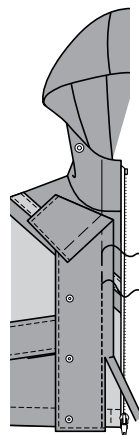
43. Fold placket along foldline, RIGHT sides together. Stitch ends. Trim corners.



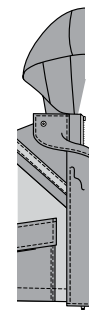
44. Turn RIGHT side out. Press. Baste raw edges together. **EDGESTITCH** finished edges.



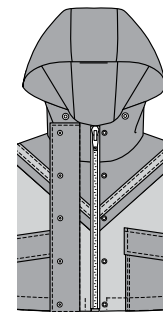
45. With snaps facing up, pin placket to right front, placing seamline along placement line and toward front edge, and end even with upper edge. Baste. Stitch placket along seamline. Trim seam to a scant 1/4"(6mm), being careful not to cut front.



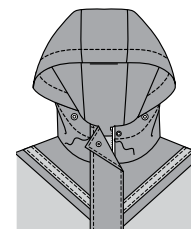
46. Turn placket toward front, covering seam. Press. **TOPSTITCH** placket 1/4"(6mm) from seam, stitching through all layers.



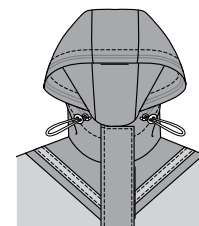
47. Apply socket section of snaps to left front under ball sections of snaps.



48. For casing on hood, stitch 1"(2.5cm) from finished edge of hood between placket and zipper stitching.



49. Measure front opening edge of hood. Cut a piece of cording this measurement, plus 10"(26cm). Insert cording through casings and ends through cord stops, leaving loops on outside. Knot ends.





Congrats!

You've completed your sewing adventure

SHARE YOUR LOOK



Post your pattern and tag us
[@simplicity_creative_group](#) and [#knowMepatterns](#)
for a chance to be featured on our social media.

Look for more PDF patterns at [simplicity.com](https://www.simplicity.com)

Have a question or need help with your sewing project call us at
1-800-782-0323



KnowMe ©2024 a division of IG Design Group Americas Inc. • Atlanta, GA 30342 USA www.thedesigngroup.com • All Rights Reserved. www.mccall.com • Made in the U.S.A. Fabriqué aux États-Unis.
To be used for individual private home use only and not for commercial or manufacturing purposes. • A usage privé seulement et non à des fins commerciales ou de production en série. • Para uso privado solamente, no se puede utilizar con propósitos de comercialización o de producción en serie.