



KEECHIB STYLE
knowME[™]
BY MIMI G

ME2098



A
B



A
B

Scan QR code
for a Sew-Along
video tutorial.



@keechiibstyle



Designed and
printed in USA

Average							
MISSSES' KNIT DRESS AND PUFFER SCARF VEST							
Suggested Fabrics: A in Stretch Knits only such as Bamboo Jersey, Cotton Jersey, Rayon/Spandex, Rib Knit, Sweater Knits. See Stretch Gauge. B: Cotton Blends, Lightweight Twill, Linen Blends, Ripstop Nylon. Batting: Medium to Hi-loft. Lining B: Cotton Blends, Polyester Blends.							
Notions: A: Two 24" (61cm) invisible zippers. B: Two 6" (15cm) exposed metal zippers, one pkg. of ½" (1.3cm) single fold bias tape.							
Sizes	XS (4-6)	S (8-10)	M (12-14)	L (16-18)	XL (20-22)	XXL (24-26)	
European	30-32	34-36	38-40	42-44	46-48	50-52	
BODY MEASUREMENTS: Select pattern size based on body measurements							
Bust	29½-30½	31½-32½	34-36	38-40	42-44	46-48	Ins.
Waist	22-23	24-25	26½-28	30-32	34-37	39-41½	"
Hip-9" below waist	31½-32½	33½-34½	36-38	40-42	44-46	48-50	"
Back-neck to waist	15¼-15½	15¼-16	16¼-16½	16¼-17	17¼-17½	17¼-18	"
Dress A	60**	2½	2¼	3	3¾	3½	Yds.
Contrast (Front and Back)	60"	1¼	1¼	1¼	1¼	1¼	Yds.
Puffer B (cut crosswise)	45, 60**	2½	2½	2½	2½	2½	Yds.
Batting	45"	2½	2½	2½	2½	2½	"
Lining	45***	2½	2½	2½	2½	2½	"
FINISHED GARMENT MEASUREMENTS (Includes Design and Wearing Ease)							
A Bust	33	35	38½	42½	46½	50½	Ins.
A Waist	24½	26½	30	34	38	42	"
A Hip	37½	39½	43	47	51	55	"
Width, lower edge							
Dress A	83½	85½	89	93	97	101	Ins.
Finished back length from base of neck							
Dress A	55½	56	56½	57	57½	58	Ins.
Puffer B	23½	24	24½	25	25½	26	"

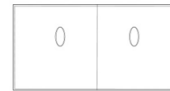
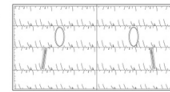
*with nap **without nap

Moins Facile							
ROBE EN TRICOT ET GILET FOULARD MATELASSÉ POUR JEUNES FEMMES							
Tissus Conseillés: A en tricot extensibles seulement tels que: Jersey de bambou, Jersey de coton, Rayonne/Elasthane, Tricot à côtes, Tricot pour chandails. Reportez-vous au taux d'élasticité. B: Cotonnades, Twill léger, Lin mélangé, Nylon indéchirable. Ouatine: Ouatine de moyen à épais. Doublure B: Cotonnades, Mélanges de polyester.							
Mercerie: A: 2 fermetures à glissière invisible de 61cm. B: 2 fermetures à glissière en métal exposée de 15cm, 1 paquet de ruban de biais simple de 1.3cm.							
Tailles	TP/XS	P/S	M/M	G/L	TG/XL	TTG/XXL	
Françaises	32-34	36-38	40-42	44-46	48-50	52-54	
Européen	30-32	34-36	38-40	42-44	46-48	50-52	
MESURES DU CORPS: Choisissez la taille du patron basée sur les mesures du corps							
Poitrine	75-77	80-83	87-92	97-102	107-112	117-122	cm
Taille	56-58	61-64	67-71	76-81	87-94	99-105	"
Hanches (23cm au-dessous de la taille)							
Dos du cou à la taille	80-83	85-88	92-97	102-107	112-117	122-127	cm
	39-39.5	40-40.5	41.5-42	42.5-43	44-44.5	45-45.5	"
Robe A	150cm*	2.3	2.4	2.5	2.7	3.1	m
Contraste (Devant et dos)	150cm*	1.6	1.6	1.6	1.6	1.7	m
Gilet matelassé B (coupé dans la largeur)							
	115, 150cm*	2.2	2.3	2.3	2.4	2.5	m
Ouatine	115cm	1.9	1.9	2.1	2.2	2.2	"
Doublure	115cm**	1.8	1.9	2.1	2.2	2.2	"
MESURES DES VÊTEMENTS FINI (Motif et aisance de port compris)							
A Poitrine	84	89	98	108	118	128	cm
A Taille	62	67	76	86	97	107	"
A Hanches	95	100	109	119	130	140	"
Largeur à l'ourlet							
Robe A	212	217	226	236	246	257	cm
Longueur finie – dos, votre nuque à l'ourlet							
Robe A	141	142	144	145	146	147	cm
Gilet matelassé B	60	61	62	64	65	66	"

*avec sens **sans sens



A



B

Use the 1 inch (2.54cm) box to ensure you are using rule at 100%

Utilisez la boîte de 2.54 cm pour vous assurer d'utiliser la règle à 100%.

Utilizar un cuadrado de 2.54 cm para asegurarse de estar usando la regla al 100%.

4" of crosswise folded fabric must STRETCH from here
10 cm de tricot plié sur le travers et sur le droit-fil doivent s'étirer de cette limite à celle là
10 cm de tejido de punto doblado (a lo largo y luego al través) deben estirarse desde acá

To Here 50%
jusqu'ici 50%
hasta acá 50%

When using the Pick-A-Knit® rule to measure your fabrics stretch capacity, rule must be viewed or printed at 100%.

Quand vous utilisez le taux d'élasticité pour mesurer la capacité d'élasticité des tissus, le taux doit être visible ou imprimé à 100%.

Al utilizar el calibre de elasticidad para medir la capacidad de elasticidad de las telas, el calibre debe estar visible o impreso al 100%.

English

KEECHII B STYLE

ME2098

knowMETM
BY mimi.g

Page 1 of 4

1-800-782-0323

SCAN QR CODE
FOR A
STEP-BY-STEP
VIDEO TUTORIAL

@keechiibstyle

8 PATTERN PIECES

1 Front-A
1A Extension
2 Side Front-A
2A Extension
3 Back-A
3A Extension
4 Side Back-A
4A Extension
5 Neckband-A
6 Sleeve-A
7 Front and Back-B
8 Pocket-B

PATTERN MARKINGS
GRAINLINE: Place on straight grain of fabric, parallel to selvage or fold.
FOLDLINE: Place line on fold of fabric.
BUTTONHOLE MARKING: Indicates exact length and placement of buttonholes.
BUTTON MARKING: Indicates button placement.
NOTCHES AND SYMBOLS: For matching seams and construction details.

Indicates the Bustline, Waistline, Hip and/or Biceps. Measurements refer to circumference of Finished Garment (Body Measurement + Wearing Ease + Design Ease). Adjust pattern if necessary. The measurement excludes pleats, tucks, darts and seam allowances.
SEAM ALLOWANCE: 5/8" (1.5cm) included unless otherwise indicated, but not printed on tissue.

ADJUST IF NECESSARY
Lengthen or Shorten at adjustment lines (==) or where indicated on pattern. If substantial length is added, you may need to purchase additional fabric.
TO SHORTEN: Crease along adjustment line. Make a fold half the amount needed. Tape in place.

TO LENGTHEN: Slash between adjustment lines. Spread amount as needed, keeping edges parallel. Tape over paper.

When Alteration lines are not on tissue, lengthen or shorten at lower edge.

CUTTING AND MARKING
SHRINK FABRIC if not labeled pre-shrunk. Press.
CIRCLE LAYOUT for View, Size, Fabric Width.
Use **WITH NAP** layout for fabrics with one-way designs, nap, pile or surface shading. Because most knits have surface shading, a with nap layout is used.
For **DOUBLE THICKNESS (WITH FOLD)** - fold fabric with right sides together.
*** DOUBLE THICKNESS (WITHOUT FOLD)** - For fabrics with nap, fold fabric crosswise, right sides together. Mark as shown. Cut along crosswise fold of fabric (A). Turn upper layer 180° so arrows go in same direction and place over lower layer, right sides together (B).

For **SINGLE THICKNESS** - place fabric right side up. (For Fur Pile fabrics, place pile side down.)

★ Cut other pieces first, allowing enough fabric to cut this piece. Open fabric. For "Cut 1" pieces, cut piece once on single layer of fabric with piece face up on right side of fabric.
Pattern may have cutting lines for several sizes. Select the proper cutting line or pattern pieces for your size.
Before **CUTTING** place all pieces on fabric according to layout. Pin. (Layouts show approximate position of pattern pieces; position may vary according to your pattern size.) Cut **ACCURATELY**, cutting notches outward.
Before removing pattern, **TRANSFER MARKINGS** and lines of construction to Wrong Side of fabric, using the Pin and Chalk Pencil method or Tracing Paper and Dressmaker Wheel. Markings needed on right side of fabric should be thread traced.
NOTE: Broken-line boxes (a! b! c!) in layouts represent pieces cut by measurements provided.

CUTTING LAYOUTS

DRESS A
USE PIECES: 2 (2A) 4 (4A) 5 6
NOTE: BEFORE CUTTING FABRIC, JOIN PIECES IN PARENTHESIS TO CORRESPONDING PIECES FOLLOWING INSTRUCTIONS ON TISSUE PATTERN.
60" (150CM)
WITH NAP
ALL SIZES

CONTRAST A FRONT, BACK
USE PIECES: 1 (1A) 3 (3A)
NOTE: BEFORE CUTTING FABRIC, JOIN PIECES IN PARENTHESIS TO CORRESPONDING PIECES FOLLOWING INSTRUCTIONS ON TISSUE PATTERN.
60" (150CM)
WITH NAP
ALL SIZES

PUFFER B
USE PIECES: 7 8
45" TO 60" (115CM TO 150CM)
WITH NAP
ALL SIZES

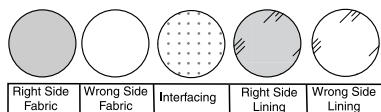
BATTING
USE PIECE: 7
45" (115CM)
WITH NAP
ALL SIZES

LINING
USE PIECE: 7
45" (115CM)
WITH NAP
ALL SIZES

© 2024 KnowMe® an IG Design Group Americas, Inc. brand.
All Rights Reserved. Printed in U.S.A.

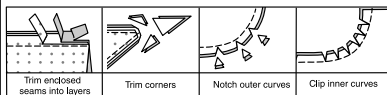
SEWING INFORMATION

FABRIC KEY



SEAM ALLOWANCES

Use 5/8" (1.5cm) seam allowances unless otherwise indicated.



PIN AND FIT

Pin or baste seams, **RIGHT SIDE TOGETHER**, matching notches. Fit garment before stitching major seams.

PRESS

Press seam allowances flat; then open unless otherwise stated. Clip where necessary so they lie flat.

GLOSSARY

Sewing methods in **BOLD TYPE** have Sewing Tutorial Video available. Scan **QR CODE** to watch videos:

DOUBLE-STITCH - See **how to double-stitch** video.

EASE/GATHER - See **sewing two row gathers** video.

EDGE STITCH - See **how to edgestitch** video.

INVISIBLE ZIPPER - See **sewing an invisible zipper** video.

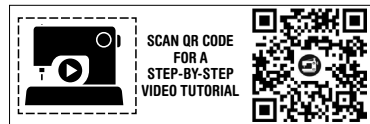
NARROW HEM - See **sewing narrow hems** video.

REINFORCE - See **how to reinforce** video.

SLIPSTITCH - See **how to slipstitch** video.

STAYSTITCH - See **how to do stay-stitching** video.

TOPSTITCH - See **how to topstitch** video.



@keechiibstyle

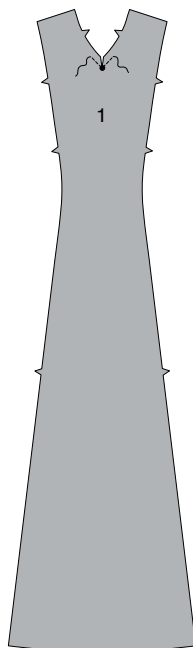
SEWING DIRECTIONS

DRESS A

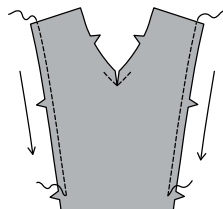
NOTE: Stretch fabric evenly in front and back of needle while stitching.

FRONT, BACK AND NECK BAND

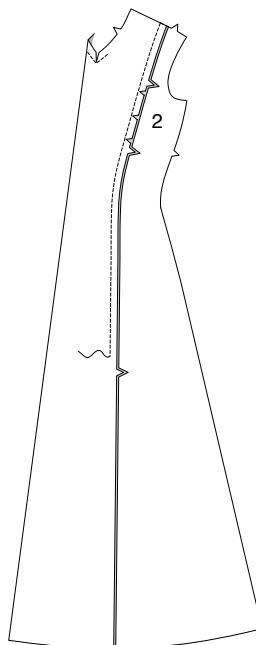
1. REINFORCE neck edge of **FRONT** (1) through large dot, as shown. Clip to large dot.



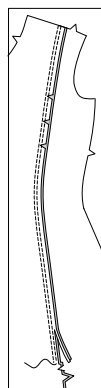
2. STAYSTITCH side edges of front above center notches, as shown.



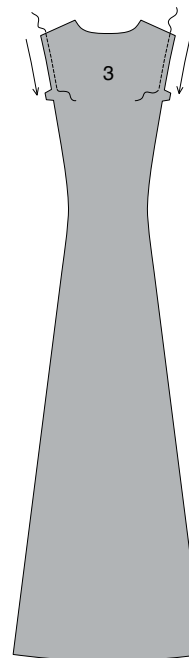
3. With **RIGHT** sides together, pin **SIDE FRONT** (2) sections to side edges of front, clipping front where necessary. Baste. Stitch, leaving open from 1" (2.5cm) above lower notch to lower edge.



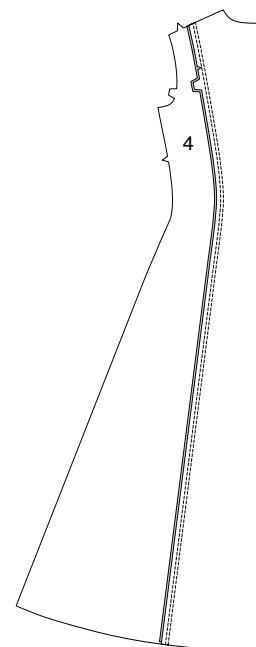
4. Clip side front seam allowances 3/8" (1cm) above lower notch. Stitch again 1/4" (6mm) away in seam allowance above clip. Trim close to second stitching. Press seams toward sides.



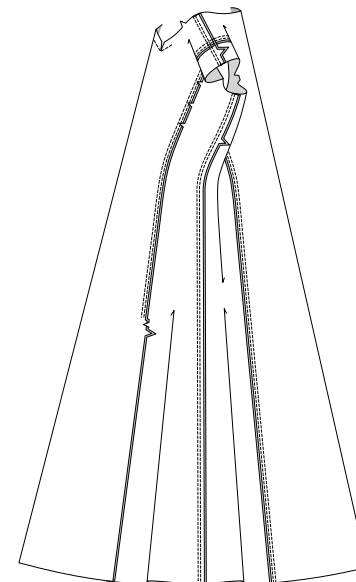
5. STAYSTITCH side edges of **BACK** (3) above notches, as shown.



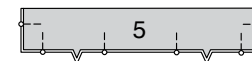
6. With **RIGHT** sides together, pin **SIDE BACK** (4) sections to side edges of back, clipping back where necessary. Baste. Stitch in **DOUBLE-STITCHED** seams. Press seams toward sides.



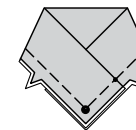
7. Stitch front to back at shoulders and sides in **DOUBLE-STITCHED** seams. Press seams toward back.



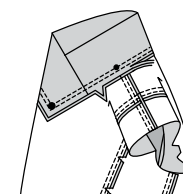
8. With **WRONG** sides together, fold **NECK BAND** (5) in half lengthwise, having raw edges even; press lightly. Pin raw edges together.



9. Lap **RIGHT** neck band over **LEFT**, matching dots, having raw edges even. Baste.

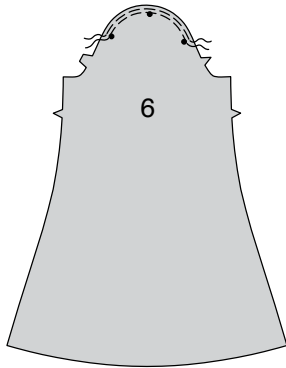


10. Pin neck band to neck edge, matching center front to large dots, placing small dots at shoulder seams. Stitch, stretching neck band to fit, pivoting at large dot. Stitch again 1/4" (6mm) away in seam allowance. Trim close to stitching. Press seam down.

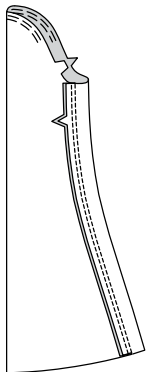


SLEEVE AND FINISHING

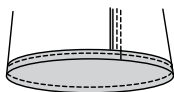
11. **EASE** upper edge of SLEEVE (6) between outer small dots.



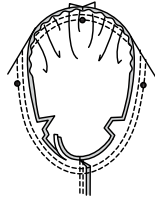
12. Stitch sleeve seam in a **DOUBLE-STITCHED** seam. Press seam toward back.



13. Make **NARROW HEM** at lower edge of sleeve.

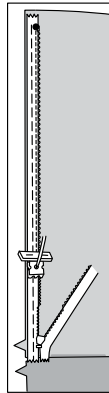


14. With right sides together, pin sleeve into armhole, placing center small dot at shoulder seam, matching remaining dots. Adjust ease; baste. Stitch. Stitch again 1/4"(6mm) away in seam allowances. Trim close to stitching. Press seam allowances flat. Turn seam allowances toward sleeve.

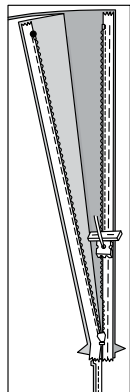


NOTE: Stitch the **INVISIBLE ZIPPER** using an invisible zipper foot. If the zipper is longer than the zipper opening, adjust after the zipper is inserted.

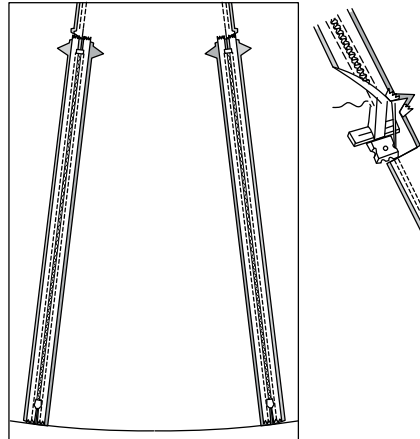
15. For each side front opening, open the zipper and press the tape using a cool iron. On **OUTSIDE**, pin **RIGHT** side of the zipper face down on the **RIGHT** side of the zipper opening. Have the coil along the seam line, the tape within the seam allowance and the top stop at large dot, as shown. Hand-baste along center of the tape. Position zipper foot at the top of the zipper with **RIGHT** groove of the foot over coil. Stitch along tape to the notch. Back-stitch to reinforce.



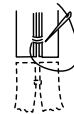
16. Pin the remaining half of the zipper to the **LEFT** side of the zipper opening in same manner. Hand-baste along the center of the tape. Position zipper foot at the top of the zipper with **LEFT** groove over the coil. Stitch along tape to the notch. Back-stitch to reinforce.



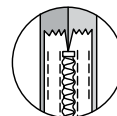
17. Close zipper and check that it is invisible from the **OUTSIDE**. Pull the free ends of the zipper tape away from the seam allowance. Pin remaining side front seam together above zipper. Position zipper foot all the way to the **LEFT** so the needle goes down through the outer notch of the foot. Start stitching seam 1/4"(6mm) below highest stitch and slightly to the **LEFT**. Stitch remainder of seam, connecting with previous stitching.



18. If the zipper is longer than the opening, using a strong thread, hand-sew a few small stitches across ends of coils at end of opening. Trim away lower end of zipper tape to within 5/8"(1.5cm) of hand-stitches.



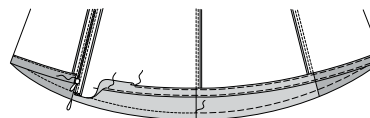
19. If you prefer, open out each seam allowance at ends of zipper and stitch tape to seam allowance.



20. Turn up hem on lower edges of dress. Baste close to fold. Turn in 1/4" (6mm) on raw edge. Baste hem in place close to upper edge. Press.

TOPSTITCH hem along upper basting.

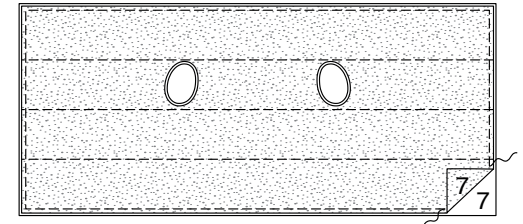
SLIPSTITCH opening edges of hem, as shown.



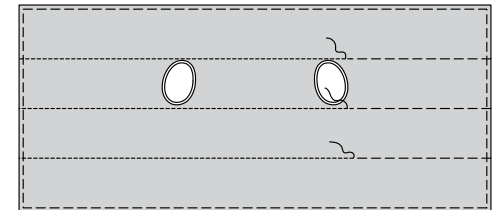
PUFFER B

FRONT AND BACK

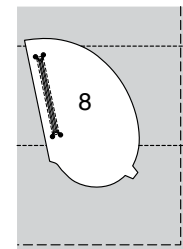
1. With **WRONG** sides up, pin **FRONT AND BACK** (7) (batting) section to front and back (fabric) section. Baste raw edges and along stitching lines.



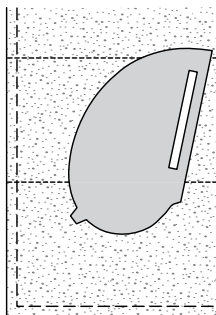
2. **TOPSTITCH** along horizontal stitching lines, as shown.



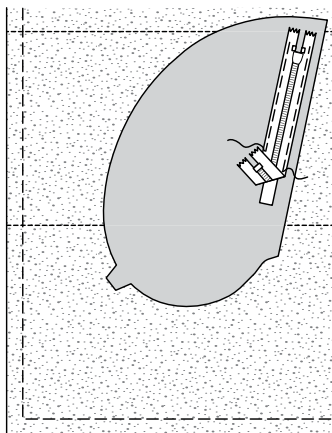
3. With **RIGHT** sides together, pin one **POCKET** (8) to each side of front and back, matching stitching lines. Stitch, pivoting at small dots. Slash along line between stitching, clipping diagonally to small dots.



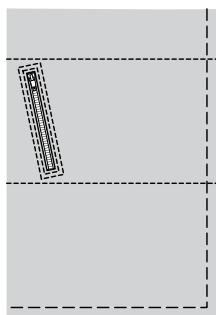
4. Turn pocket to inside; press.



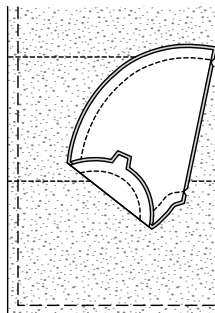
5. Center closed zipper, face up, under pocket opening edges, placing zipper stop at lower end, as shown. Baste.



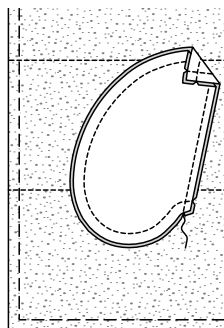
6. On OUTSIDE, **EDGE**STITCH zipper opening using a zipper foot. **TOP**STITCH side pocket edges 1/4" (6mm) away, as shown.



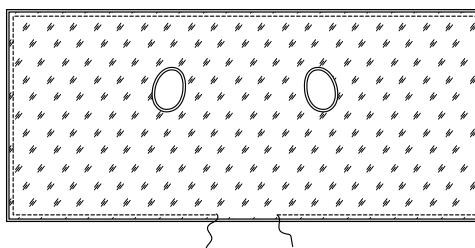
7. With **RIGHT** sides together, pin remaining pocket section to pocket. Stitch outer curved edges together, keeping front free.



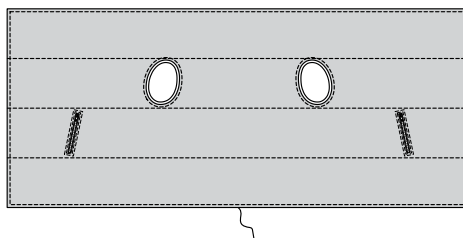
8. Stitch straight edge of pocket in a 1/2" (1.3cm) seam, using a zipper foot and keeping front free.



9. With **RIGHT** sides together, pin front and back (lining) to front and back. Stitch outer edges, leaving an opening at lower edge for turning. Trim.



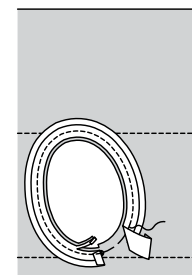
10. Turn. Press. **SLIP**STITCH opening. **TOP**STITCH 3/8" (1cm) from outer edges. Baste armhole edges.



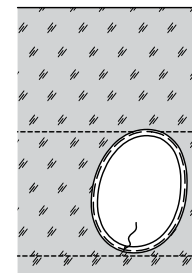
11. Open out one folded edge of bias tape; press out crease by pressing lightly.



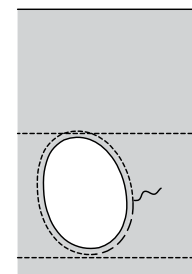
12. On **OUTSIDE**, pin bias tape to armhole edge, having raw edges even, turning in ends to meet at small dot, as shown. Stitch in 3/8" (1cm) seam. Trim seam to a scant 1/4" (6mm).



13. Turn bias tape to inside along seam. Press. **SLIP**STITCH ends. Baste in place.



14. On **OUTSIDE**, stitch along basting.





Congrats!

You've completed your sewing adventure

SHARE YOUR LOOK



Post your pattern and tag us
[@simplicity_creative_group](#) and [#knowMepatterns](#)
for a chance to be featured on our social media.

Look for more PDF patterns at [simplicity.com](https://www.simplicity.com)

Have a question or need help with your sewing project call us at
1-800-782-0323



KnowMe ©2024 a division of IG Design Group Americas Inc. • Atlanta, GA 30342 USA www.thedesigngroup.com • All Rights Reserved. www.mccall.com • Made in the U.S.A. Fabriqué aux États-Unis.
To be used for individual private home use only and not for commercial or manufacturing purposes. • A usage privé seulement et non à des fins commerciales ou de production en série. • Para uso privado solamente, no se puede utilizar con propósitos de comercialización o de producción en serie.