



DONNY Q

knowME™

BY MIMI G

ME2097



Scan QR code
for a Sew-Along
video tutorial.



@_donnyQ



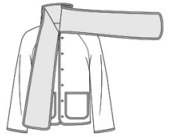
Designed and
printed in USA

Average										
MEN'S JACKET WITH SCARF										
Suggested Fabrics: Chambray, Cotton Blends, Flannel, Lightweight Denim, Lightweight Wool Blends, Linen Blends, Pre-quilted Fabrics, Tweed. Lining: Cotton Blends. NOTE: Lining will show.										
Notions: Four pkgs. of ½" (1.3cm) double fold bias tape, six ¾" (1.5cm) buttons. ¼										
Sizes	34	36	38	40	42	44	46	48	50	52
BODY MEASUREMENTS: Select pattern size based on body measurements										
Chest	34	36	38	40	42	44	46	48	50	52 Ins.
Waist	28	30	32	34	36	39	42	44	46	48 "
Hip	35	37	39	41	43	45	47	49	51	53 "
Jacket										
45"	2¾	2¾	27%	27%	27%	31%	31%	31%	31%	3¾ Yds.
60"	1%	2	2	2	2½	2½	2½	2¾	2¾	2% "
Lining										
45"	2¾	2¾	27%	27%	27%	3	3½	3½	3¾	3¾ Yds.
FINISHED GARMENT MEASUREMENTS (Includes Design and Wearing Ease)										
Chest	39	41	43	45	47	49	51	53	55	57 Ins.
Waist	39	41	43	45	47	49	51	53	55	57 "
Finished back length from base of neck										
Jacket	27¾	27½	27¾	28	28¼	28½	28¾	29	29¼	29½ Ins.

*with nap **without nap

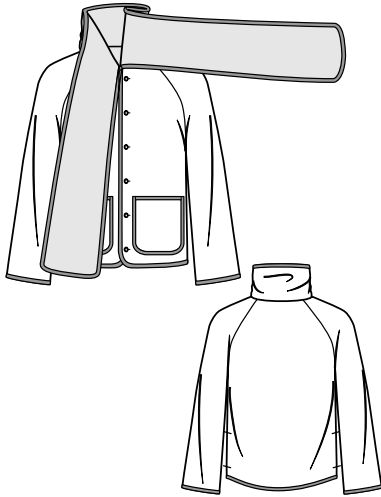
Moins Facile										
VESTE AVEC FOULARD POUR HOMMES										
Tissus Conseillés: Chambray, Cotonnades, Flanelle, Denim Léger, Lainages légers, Lin mélangés, Tissus pré-matelésés, Tweed. Doublure: Cotonnades. NOTE: le tissu de doublure sera visible.										
Mercerie: 4 paquets de ruban de biais double de 1.3cm, 6 boutons de 1.5cm.										
Tailles	34	36	38	40	42	44	46	48	50	52
MESURES DU CORPS: Choisissez la taille du patron basée sur les mesures du corps										
Poitrine	87	92	97	102	107	112	117	122	127	132 cm
Taille	71	76	82	87	92	99	107	112	117	122 "
Hanches (23cm au-dessous de la taille)										
	89	94	99	104	109	115	119	124	128	135 cm
Veste										
115cm*	2.5	2.5	2.5	2.6	2.6	2.9	2.9	3.0	3.0	3.1 m
150cm*	1.7	1.8	1.8	1.8	1.9	1.9	2.2	2.4	2.5	2.6 "
Doublure										
115cm*	2.5	2.5	2.6	2.6	2.6	2.7	2.9	2.9	2.9	3.0 m
MESURES DES VÊTEMENTS FINI (Motif et aisance de port compris)										
Poitrine	99	104	109	114	119	124	130	135	140	145 cm
Taille	99	104	109	114	119	124	130	135	140	145 "
Longueur finie – dos, votre nuque à l'ourlet										
Veste	69	70	70	71	72	72	73	74	74	75 cm

*avec sens **sans sens

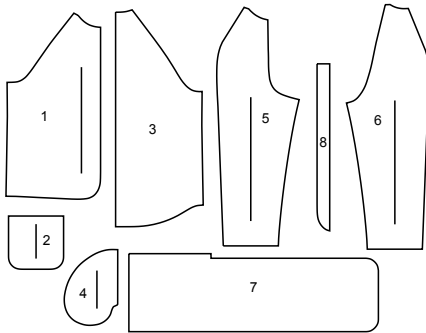




@_donnyQ

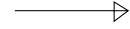


8 PATTERN PIECES

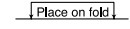


- 1 Front
2 Front Pocket
3 Back
4 Pocket
5 Sleeve Front
6 Sleeve Back
7 Collar
8 Buttonhole Guide

PATTERN MARKINGS



GRAINLINE: Place on straight grain of fabric, parallel to selvage or fold.



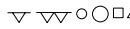
FOLDLINE: Place line on fold of fabric.



BUTTONHOLE MARKING: Indicates exact length and placement of buttonholes.



BUTTON MARKING: Indicates button placement.



NOTCHES AND SYMBOLS: For matching seams and construction details.



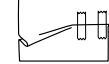
Indicates the Bustline, Waistline, Hip and/or Biceps. Measurements refer to circumference of Finished Garment (Body Measurement + Wearing Ease + Design Ease). Adjust pattern if necessary. The measurement excludes pleats, tucks, darts and seam allowances.

SEAM ALLOWANCE: 5/8" (1.5cm) included unless otherwise indicated, but not printed on tissue.

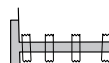
ADJUST IF NECESSARY

Lengthen or Shorten at adjustment lines (==) or where indicated on pattern. If substantial length is added, you may need to purchase additional fabric.

TO SHORTEN: Crease along adjustment line. Make a fold half the amount needed. Tape in place.



TO LENGTHEN: Slash between adjustment lines. Spread amount as needed, keeping edges parallel. Tape over paper.



When Alteration lines are not on tissue, lengthen or shorten at lower edge.

CUTTING AND MARKING

SHRINK FABRIC if not labeled pre-shrunk. Press.

CIRCLE LAYOUT for View, Size, Fabric Width.

Use **WITH NAP** layout for fabrics with one-way designs, nap, pile or surface shading. Because most knits have surface shading, a with nap layout is used.

For **DOUBLE THICKNESS (WITH FOLD)** - fold fabric with right sides together.

***DOUBLE THICKNESS (WITHOUT FOLD)** - For fabrics with nap, fold fabric crosswise, right sides together. Mark as shown. Cut along crosswise fold of fabric (A). Turn upper layer 180° so arrows go in same direction and place over lower layer, right sides together (B).

For **SINGLE THICKNESS** - place fabric right side up. (For Fur Pile fabrics, place pile side down.)

★ Cut other pieces first, allowing enough fabric to cut this piece. Open fabric. For "Cut 1" pieces, cut piece once on single layer of fabric with piece face up on right side of fabric.

Pattern may have cutting lines for several sizes. Select the proper cutting line or pattern pieces for your size.

Before **CUTTING** place all pieces on fabric according to layout. Pin. (Layouts show approximate position of pattern pieces; position may vary according to your pattern size.) Cut **ACCURATELY**, cutting notches outward.

Before removing pattern, **TRANSFER MARKINGS** and lines of construction to Wrong Side of fabric, using the Pin and Chalk Pencil method or Tracing Paper and Dressmaker Wheel. Markings needed on right side of fabric should be thread traced.

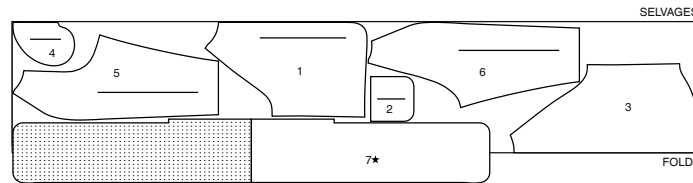
NOTE: Broken-line boxes (a! b! c!) in layouts represent pieces cut by measurements provided.

CUTTING LAYOUTS

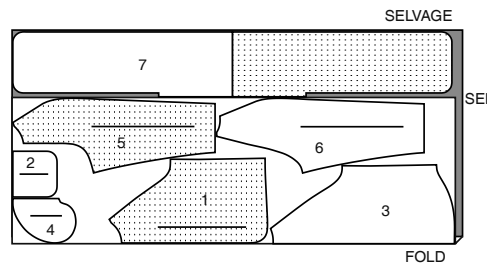
JACKET

USE PIECES: 1 2 3 4 5 6 7

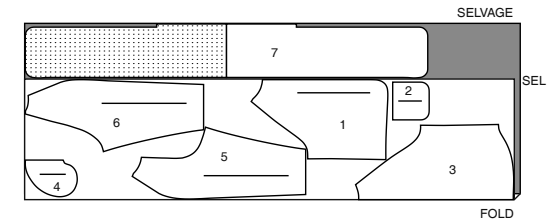
45" (115 CM)
WITH NAP
ALL SIZES



60" (150 CM)
WITH NAP
SIZES 34 36 38 40 42 44



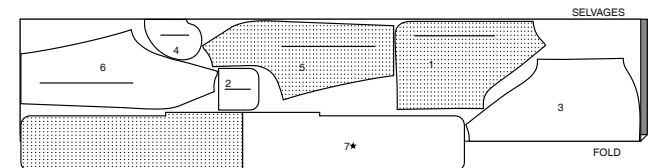
60" (150 CM)
WITH NAP
SIZES 46 48 50 52



LINING

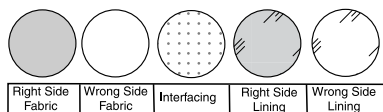
USE PIECES: 1 2 3 4 5 6 7

45" (115 CM)
WITHOUT NAP
ALL SIZES



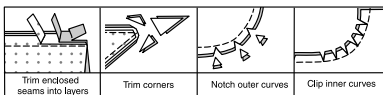
SEWING INFORMATION

FABRIC KEY



SEAM ALLOWANCES

Use 5/8" (1.5cm) seam allowances unless otherwise indicated.



PIN AND FIT

Pin or baste seams, **RIGHT SIDE TOGETHER**, matching notches. Fit garment before stitching major seams.

PRESS

Press seam allowances flat; then open unless otherwise stated. Clip where necessary so they lie flat.

GLOSSARY

Sewing methods in **BOLD TYPE** have Sewing Tutorial Video available. Scan **QR CODE** to watch videos:

Sewing terms appearing in **BOLD TYPE** in Sewing Instructions are explained below.

SLIPSTITCH - Slide needle through a folded edge, then pick up a thread of underneath fabric.

STAYSTITCH - Stitch 1/8" (3mm) from seamline in seam allowance (usually 1/2" (13mm) from raw edge), unless otherwise indicated in instructions.

STITCH IN THE DITCH - On **INSIDE**, pin pressed edge of facing 1/8" (3mm) over seam, placing pins on **OUTSIDE**. On **OUTSIDE**, stitch in the ditch or "groove of seam", catching in pressed edge of facing on **INSIDE**.

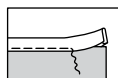
TIP - To conceal the stitches in the ditch or groove of seam, try using a zipper foot, spreading the skirt and band away from the seam with your fingers.

TRIM - Trim and clip seam allowances to reduce bulk, by trimming seams in layers and notching out seam allowances along curves. Trim corners.

UNDERSTITCH - Open out facing or underside of garment; stitch to seam allowance close to seam.

GENERAL DIRECTIONS FOR APPLYING DOUBLE FOLD BIAS TAPE

Double fold bias tape comes with one side slightly wider than the other. The wider side is used on the **INSIDE** so that when the tape is stitched in place from the **OUTSIDE**, both edges are caught in the stitching.



Curves:

If tape is applied to a curved surface, first, pre-shape it with a steam iron.

For an inward curve, stretch the double edges and press; for an outward curve, stretch the fold edge and press.

TIP FOR SHAPING TRIM- Place trim along the pattern tissue and then follow instructions above.

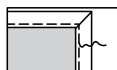


Corners:

Encase one edge all the way to raw edge of fabric. Raise presser foot and cut the thread.

Turn tape around corner and pin in place.

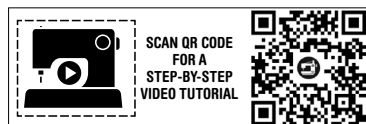
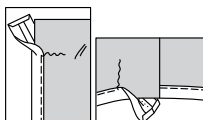
Fold tape diagonally on both sides of corner; lower needle into diagonal fold and stitch the remaining side.



Ends:

Turn tape ends under to finish an edge or enclose at the seam when possible.

When tape completely encloses an edge, arrange to have ends meet at a seam; then turn both ends under where they meet and tack together invisibly after stitching on tape. OR have one end extend 1/2" (1.3cm) beyond the seam; then turn under and lap remaining end at the seam.



@_donnyQ

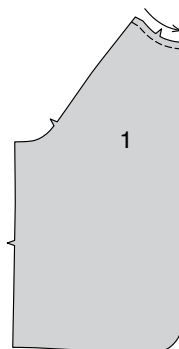
PATTERN PIECES WILL BE IDENTIFIED BY NUMBERS THE FIRST TIME THEY ARE USED.

STITCH IN 5/8" (1.5CM) SEAMS WITH RIGHT SIDES TOGETHER UNLESS OTHERWISE STATED.

SEWING DIRECTIONS

JACKET

1. To **STAYSTITCH** neck edge of **FRONT** (1) sections, stitch 1/2" (1.3cm) from cut edge in direction of arrows. This stitching stays in permanently to prevent stretching on curved edges. (Shown only in the first illustration).



2. For each pocket, pin one **POCKET** (2) to one lining section along outer edges, having **WRONG** sides together and raw edges even. Baste 3/8" (1cm) from raw edge.

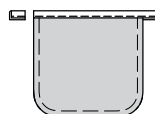


3. To finish upper edge of pocket, cut a piece of double fold bias tape an inch or so longer than width of pocket.

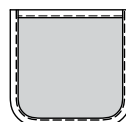
Slip raw edge between folds of tape, placing raw edge against center crease and wider folded edge of tape on **INSIDE** of pocket. Stitch tape in place from **OUTSIDE**, being sure to catch in folded edge on **INSIDE**.

Trim ends of tape even with raw edges of pocket.

See **GENERAL DIRECTIONS FOR DOUBLE-FOLD BIAS TAPE**.

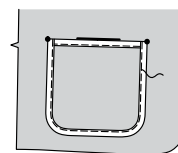


4. Apply bias tape to side and lower edges of pocket, turning under ends of tape at upper edge.

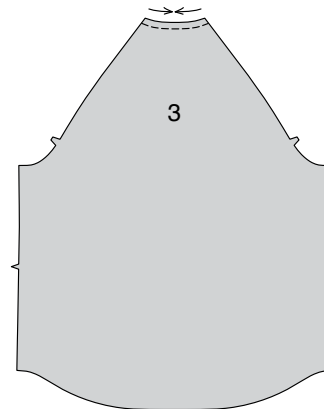


5. On **OUTSIDE**, pin one pocket to each front, placing corners at large dots.

Stitch along previous stitching on tape through all thicknesses.



6. **STAYSTITCH** neck edge of **BACK** (3) in direction of arrows.

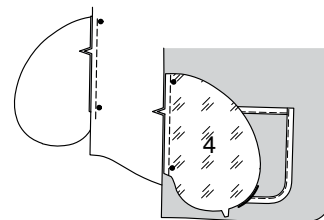


7. Apply pockets to side edges of front and back as follows:

With **RIGHT** sides together, pin **POCKET** (4) cut of lining to each front, matching large dots and having raw edges even.

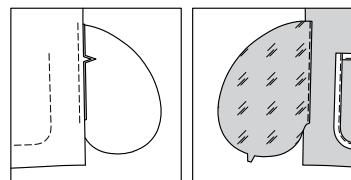
Stitch in a 3/8" (1cm) seam.

Stitch pockets cut of fabric to back in same manner.



8. Press seam toward pocket, pressing pocket out.

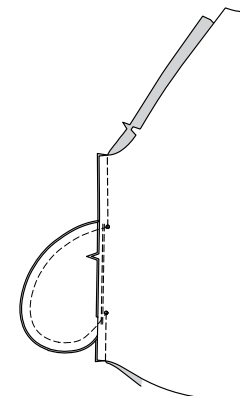
UNDERSTITCH front pocket.



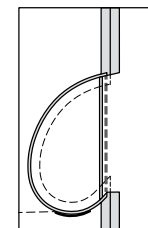
9. Pin back to front at side seams, matching large dots.

Stitch side seams, leaving an opening between large dots; back-stitch at large dots to reinforce seam.

Stitch pocket edges together between seams.



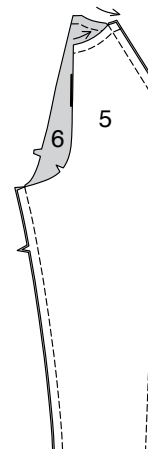
10. Clip jacket back seam allowance at ends of pocket. Press seam open above and below clips. Press pocket toward front.



11. **STAYSTITCH** neck edge of **SLEEVE FRONT** (5) and **SLEEVE BACK** (6) sections in direction of arrows.

Stitch overarm seam.

Stitch underarm seam.

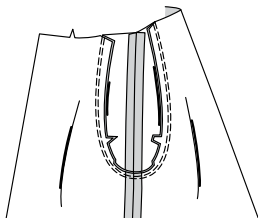


12. With **RIGHT** sides together, pin sleeve to armhole, matching notches and underarm seams. Stitch.

Stitch again 1/8" (3mm) from first stitching within seam.

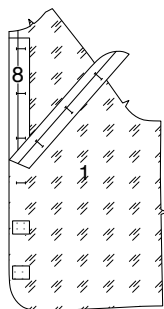
Trim seam below notches close to stitching.

Press seam toward sleeve.



13. OPTIONAL - To stabilize **LEFT FRONT** (1) lining for buttonholes, cut six rectangles of fusible interfacing from your remnants, each just large enough to cover finished buttonholes. Mark buttonholes on **WRONG** side of lining using **BUTTONHOLE GUIDE** (8).

Center and fuse a rectangle over each marking, following manufacturer's directions.



14. Stitch seams of front, back, and sleeve lining sections same as for jacket.

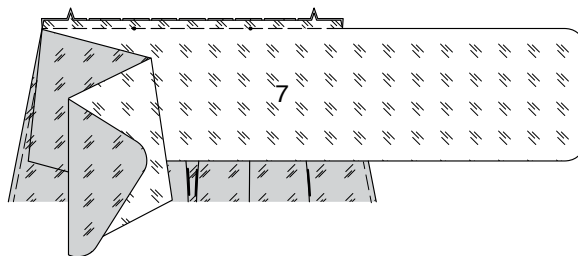
With **WRONG** sides together and raw edges even, pin outer edges of lining and jacket together, matching centers back and seams. Slip sleeve into sleeve lining, matching seams and having raw edges even; pin.

Machine-stitch 1/2" (1.cm) from neck edge.

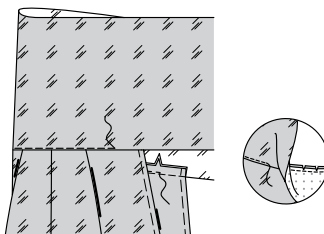
Baste 3/8" (1cm) from remaining raw edges.



15. With **RIGHT** sides together and raw edges even, pin collar lining to lining side of jacket at neck edge, matching centers back and placing small dots at shoulder seams, clipping neck edge of jacket where necessary. Baste.

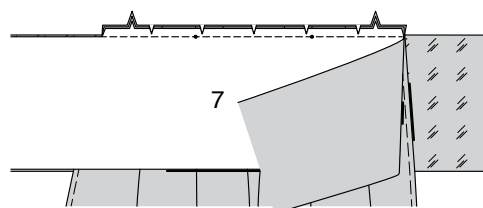


16. UNDERSTITCH neck edge of collar lining between notches.



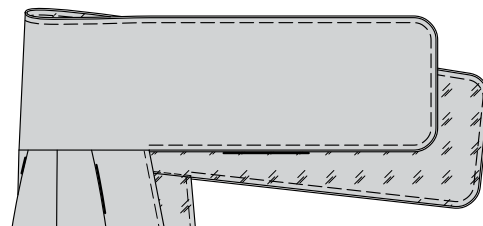
17. With **RIGHT** sides together and raw edges even, pin collar to neck edge of collar lining (sandwiching jacket), matching centers back and placing small dots at shoulder seams. Stitch.

TRIM seam. Clip curves if necessary.



18. Pin free edges of collar and collar lining together, having **WRONG** sides together, matching centers and having raw edges even.

Baste 3/8" (1cm) away from raw edges, keeping coat free.

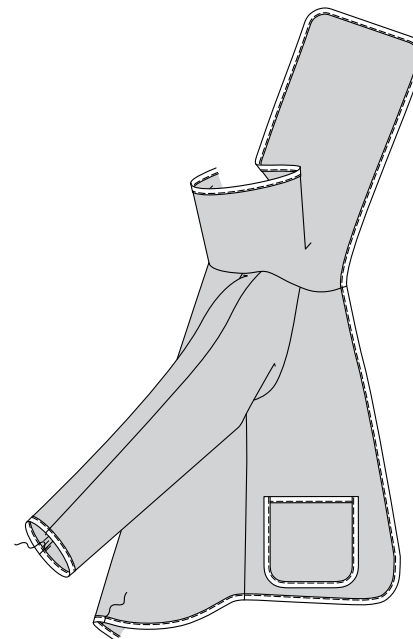


19. Slip raw edge of sleeve between folds of bias tape same as for pocket, turning under ends at underarm seam.

Stitch close to inner edge of tape.

SLIPSTITCH ends of tape together.

Pin bias tape to remaining raw edges of jacket, straightening out collar at neck seam (a small fold will form at neck edges), turning under ends at center back seam or at one side seam in same manner.

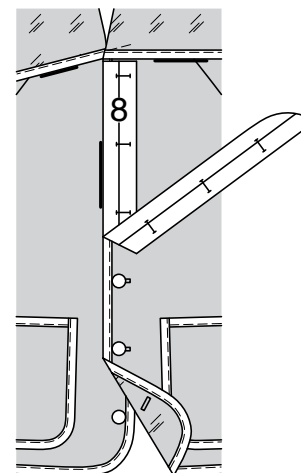


20. Transfer buttonhole markings to **LEFT** front on **OUTSIDE** using your **BUTTONHOLE GUIDE** (8) or markings on lining.

Make buttonholes.

Lap **LEFT** front over **RIGHT**, matching centers front.

Sew buttons to **RIGHT** front under buttonholes.





Congrats!

You've completed your sewing adventure

SHARE YOUR LOOK



Post your pattern and tag us
[@simplicity_creative_group](#) and [#knowMepatterns](#)
for a chance to be featured on our social media.

Look for more PDF patterns at [simplicity.com](https://www.simplicity.com)

Have a question or need help with your sewing project call us at
1-800-782-0323



KnowMe ©2024 a division of IG Design Group Americas Inc. • Atlanta, GA 30342 USA www.thedesigngroup.com • All Rights Reserved. www.mccall.com • Made in the U.S.A. Fabriqué aux États-Unis.
To be used for individual private home use only and not for commercial or manufacturing purposes. • A usage privé seulement et non à des fins commerciales ou de production en série. • Para uso privado solamente, no se puede utilizar con propósitos de comercialización o de producción en serie.