BEAUTE' J'ADORE  
**knowME**  
BY MIMI G

ME2094

Scan QR code  
for a Sew-Along  
video tutorial.

@beautejadore

Designed and  
printed in USA

## Average

## MISSES' DRESS

**Suggested Fabrics:** Cotton Blends, Crepe, Gabardine, Lightweight Denim, Linen Blends, Neoprene, Satin, Twill. **Lining:** Cotton Blends, Polyester Blends. **Interfacing:** Lightweight Fusible.**Notions:** A,B: Pair of bra underwires, 16" (41cm) invisible zipper, pair of ½" (1.3cm) bra O-rings and sliders.

Sizes	8	10	12	14	16	18	20	22	24	26
European	34	36	38	40	42	44	46	48	50	52

## BODY MEASUREMENTS: Select pattern size based on body measurements

Bust	31½	32½	34	36	38	40	42	44	46	48	Ins.
Waist	24	25	26½	28	30	32	34	37	39	41	"
Hip-9" below waist	33½	34½	36	38	40	42	44	46	48	50	"
Back-neck to waist	15½	16	16¼	16½	16¾	17	17¼	17½	17¾	18	"

Lining A,B	45"***	½	½	½	¾	¾	¾	¾	¾	¾	¾	Yd.
Interfacing	20" - 1½ yds.											

Dress A	45"*	2¼	2¼	2¼	2¼	2¼	2½	2½	2½	2½	Yds.
	60"*	1½	1½	1½	1½	1¾	1¾	2¼	2¼	2¼	"
Dress B	45"*	2¼	2¼	2¼	2¼	2¼	2¼	2¼	2½	2½	Yds.
	60"*	1½	1½	1½	1½	1½	1½	2¼	2¼	2¼	"

Contrast (Bra Front, Bra Side, Bra Band, Strap, Shoulder Strap) - 45, 60" - ¾ yd.

## FINISHED GARMENT MEASUREMENTS (Includes Design and Wearing Ease)

A,B Bust	34½	35½	37	39	41	43	45	47	49	51	Ins.
A,B Waist	26½	27½	29	31	33	35	37	39	41	43	"
A,B Hip	37	38	39½	41½	43½	45½	47½	49½	51½	53½	"
Width, lower edge											
Dress A,B	37½	38½	40	42	44	46	48	50	52	54	Ins.
Finished back length from base of neck											
Dress A,B	49¾	50	50¼	50½	50¾	51	51¼	51½	51¾	52	Ins.

\*with nap \*\*without nap

## Average

## ROBE POUR JEUNES FEMMES

**Tissus Conseillés:** Cotonnades, Crêpe, Gabardine, Denim léger, Lin mélangés, Néoprène, Satin, Twill. **Doublure:** Cotonnades, Mélanges de polyester. **Entoilage:** Thermocollant léger.**Merцерie:** A,B: Paire d'armatures de soutien-gorge, fermeture à glissière invisible de 41cm, paire de réglieurs soutien-gorge de 1.3cm.

Tailles	8	10	12	14	16	18	20	22	24	26
Françaises	36	38	40	42	44	46	48	50	52	54
Européen	34	36	38	40	42	44	46	48	50	52

## MESURES DU CORPS: Choisissez la taille du patron basée sur les mesures du corps

Poitrine	80	83	87	92	97	102	107	112	117	122	cm
Taille	61	64	67	71	76	81	87	94	99	104	"
Hanches (23cm au-dessous de la taille)	85	88	92	97	102	107	112	117	122	127	cm
Dos du cou à la taille	40	40.5	41.5	42	42.5	43	44	44.5	45	46	"

Doublure A,B	115cm**	0.5	0.5	0.5	0.5	0.6	0.6	0.6	0.6	0.7	m
Entoilage	51cm - 1.5m										

Robe A	115cm*	2.1	2.1	2.1	2.1	2.1	2.3	2.4	2.4	2.5	m
	150cm*	1.4	1.5	1.5	1.5	1.5	1.6	1.6	2.1	2.1	"
Robe B	115cm*	2.1	2.1	2.1	2.1	2.1	2.1	2.1	2.2	2.3	m
	150cm*	1.3	1.3	1.4	1.4	1.4	1.4	1.9	2.1	2.1	"

Contraste (Devant le soutien-gorge, Côté du soutien-gorge, Bande du soutien-gorge, Bretelle, Bretelle d'Épaule) - 115, 150cm\* - 0.7m

## MESURES DES VÊTEMENTS FINI (Motif et aisance de port compris)

A,B Poitrine	88	90	94	99	104	109	114	119	124	130	cm
A,B Taille	67	70	74	79	84	89	94	99	104	109	"
A,B Hanches	94	97	100	105	110	116	121	126	131	136	"
Largeur à l'ourlet											
Robe A,B	95	98	102	107	112	117	122	127	132	137	cm
Longueur finie - dos, votre nuque à l'ourlet											
Robe A,B	126	127	128	128	129	130	130	131	131	132	cm

\*avec sens \*\*sans sens



A

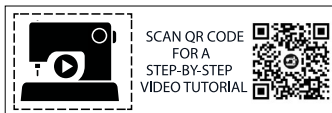


B

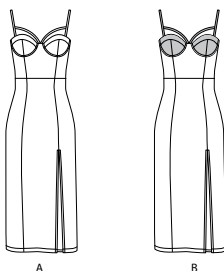


A

B

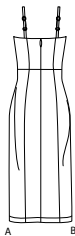

 SCAN QR CODE  
 FOR A  
 STEP-BY-STEP  
 VIDEO TUTORIAL

@beautejadore



A

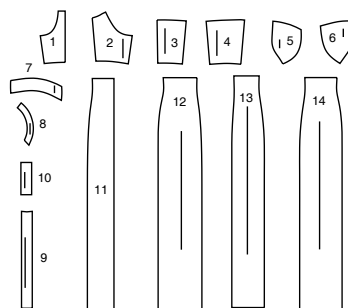
B



A

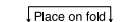
B

## 14 PATTERN PIECES

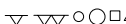


- 1 BODICE FRONT - A,B  
 2 BODICE SIDE FRONT - A,B  
 3 BODICE BACK - A,B  
 4 BODICE SIDE BACK - A,B  
 5 BRA FRONT - A,B  
 6 BRA (SIDE) - A,B  
 7 BRA BAND - A,B  
 8 STRAP - A,B  
 9 SHOULDER STRAP - A,B  
 10 LOOP - A,B  
 11 SKIRT FRONT - A,B  
 12 SKIRT SIDE FRONT - A,B  
 13 SKIRT BACK - A,B  
 14 SKIRT SIDE BACK - A,B

## PATTERN MARKINGS


**GRAINLINE:** Place on straight grain of fabric, parallel to selvage or fold.

**FOLDLINE:** Place line on fold of fabric.

**BUTTONHOLE MARKING:** Indicates exact length and placement of buttonholes.

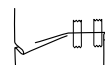
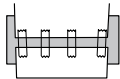
**BUTTON MARKING:** Indicates button placement.

**NOTCHES AND SYMBOLS:** For matching seams and construction details.


Indicates the Bustline, Waistline, Hip and/or Biceps. Measurements refer to circumference of Finished Garment (Body Measurement + Wearing Ease + Design Ease). Adjust pattern if necessary. The measurement excludes pleats, tucks, darts and seam allowances.

**SEAM ALLOWANCE:** 5/8" (1.5cm) included unless otherwise indicated, but not printed on tissue.

## ADJUST IF NECESSARY

Lengthen or Shorten at adjustment lines (==) or where indicated on pattern. If substantial length is added, you may need to purchase additional fabric.

**TO SHORTEN:** Crease along adjustment line. Make a fold half the amount needed. Tape in place.

**TO LENGTHEN:** Slash between adjustment lines. Spread amount as needed, keeping edges parallel. Tape over paper.


When Alteration lines are not on tissue, lengthen or shorten at lower edge.

## CUTTING AND MARKING

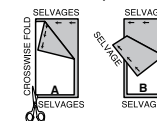
**SHRINK FABRIC** if not labeled pre-shrunk. Press.

**CIRCLE LAYOUT** for View, Size, Fabric Width.

 Use **WITH NAP** layout for fabrics with one-way designs, nap, pile or surface shading. Because most knits have surface shading, a with nap layout is used.

 For **DOUBLE THICKNESS (WITH FOLD)** - fold fabric with right sides together.

**\* DOUBLE THICKNESS (WITHOUT FOLD)** - For fabrics with nap, fold fabric crosswise, right sides together. Mark as shown. Cut along crosswise fold of fabric (A). Turn upper layer 180° so arrows go in same direction and place over lower layer, right sides together (B).

 For **SINGLE THICKNESS** - place fabric right side up. (For Fur Pile fabrics, place pile side down.)


★ Cut other pieces first, allowing enough fabric to cut this piece. Open fabric. For "Cut 1" pieces, cut piece once on single layer of fabric with piece face up on right side of fabric.

Pattern may have cutting lines for several sizes. Select the proper cutting line or pattern pieces for your size.

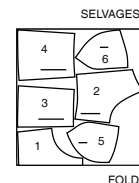
 Before **CUTTING** place all pieces on fabric according to layout. Pin. (**Layouts show approximate position of pattern pieces; position may vary according to your pattern size.**) Cut **ACCURATELY**, cutting notches outward.

 Before removing pattern, **TRANSFER MARKINGS** and lines of construction to Wrong Side of fabric, using the Pin and Chalk Pencil method or Tracing Paper and Dressmaker Wheel. Markings needed on right side of fabric should be thread traced.

**NOTE:** Broken-line boxes (a! b! c!) in layouts represent pieces cut by measurements provided.

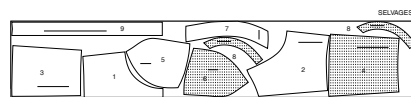
## CUTTING LAYOUTS

**LINING A, B**  
 PIECES 1 2 3 4 5 6

 45" (115CM)  
 WITHOUT NAP  
 ALL SIZES


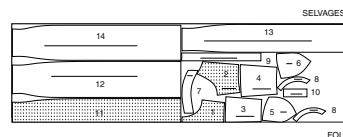
FOLD

**INTERFACING A, B**  
 PIECES 1 2 3 4 5 6 7 8 9

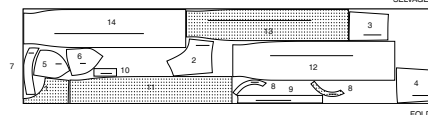
 20" (51CM)  
 ALL SIZES


FOLD

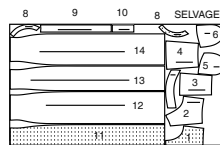
**DRESS A**  
 PIECES 1 2 3 4 5 6 7 8 9 10 11 12 13 14

 45" (115CM)  
 WITH NAP  
 SIZES 8 10 12 14 16 18


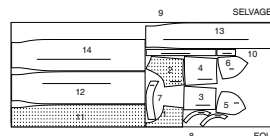
FOLD

 45" (115CM)  
 WITH NAP  
 SIZES 20 22 24 26


FOLD

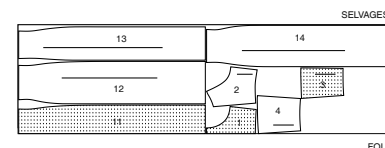
 60" (150CM)  
 WITH NAP  
 SIZES 8 10 12 14 16


FOLD

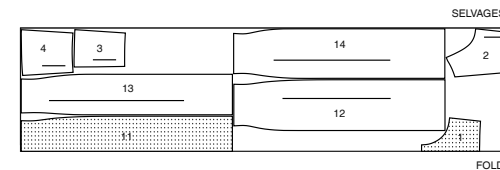
 60" (150CM)  
 WITH NAP  
 SIZES 18 20 22 24 26


FOLD

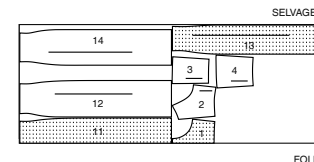
**DRESS B**  
 PIECES 1 2 3 4 11 12 13 14

 45" (115CM)  
 WITH NAP  
 SIZES 8 10 12 14 16 18 20 22


FOLD

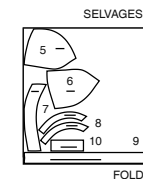
 45" (115CM)  
 WITH NAP  
 SIZES 24 26


FOLD

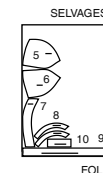
 60" (150CM)  
 WITH NAP  
 ALL SIZES


FOLD

**CONTRAST B**  
 PIECES 5 6 7 8 9 10

 45" (115CM)  
 WITH NAP  
 ALL SIZES


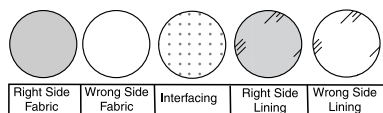
FOLD

 60" (150CM)  
 WITH NAP  
 ALL SIZES


FOLD

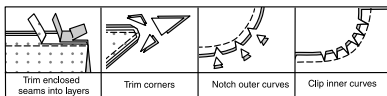
## SEWING INFORMATION

## FABRIC KEY



## SEAM ALLOWANCES

Use 5/8" (1.5cm) seam allowances unless otherwise indicated.



## PIN AND FIT

Pin or baste seams, **RIGHT SIDE TOGETHER**, matching notches. Fit garment before stitching major seams.

## PRESS

Press seam allowances flat; then open unless otherwise stated. Clip where necessary so they lie flat.

## GLOSSARY

Sewing terms appearing in **BOLD TYPE** in sewing instructions are explained below.

**EDGESTITCH** - Stitch close to finished edge or seam.

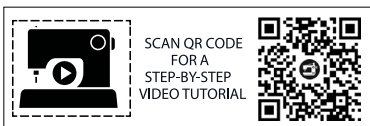
**NARROW HEM** - Turn in hem; press, easing in fullness if necessary. Open out hem. Turn in again so raw edge is along crease; press. Turn in along crease; stitch.

**SLIPSTITCH** - Slide needle through a folded edge, then pick up a thread of underneath fabric.

**STAYSTITCH** - Stitch 1/8" (3mm) from seamline in seam allowance (usually 1/2" (13mm) from raw edge).

**TOPSTITCH** - On outside, stitch 1/4" (6mm) from edge, seam or previous stitching, using presser foot as guide, or stitch where indicated in instructions.

**UNDERSTITCH** - Open out facing or underside of garment; stitch to seam allowance close to seam.



SCAN QR CODE  
FOR A  
STEP-BY-STEP  
VIDEO TUTORIAL

@beautejadore

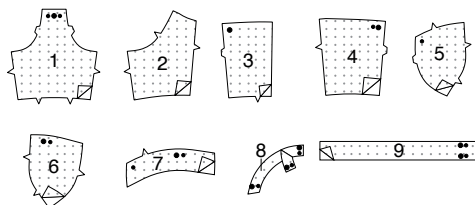
**PATTERN PIECES WILL BE IDENTIFIED BY NUMBERS THE FIRST TIME THEY ARE USED.**

**STITCH SEAMS WITH RIGHT SIDES TOGETHER UNLESS OTHERWISE STATED.**

## DRESS A, B

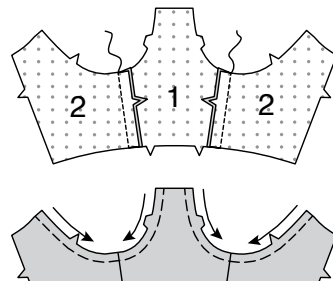
## INTERFACING

1. Fuse **INTERFACING** to **WRONG** side of each matching **FABRIC** section, as shown, following manufacturer's instructions.

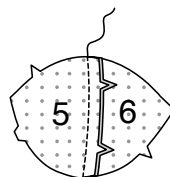


## BODICE

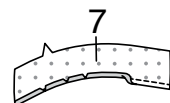
2. Stitch **BODICE SIDE FRONT** (2) to side edges of **BODICE FRONT** (1), matching notches. **STAYSTITCH** curved edges, as shown.



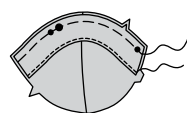
3. Stitch **BRA FRONT** (5) to **BRA (SIDE)** (6), matching notches. Trim.



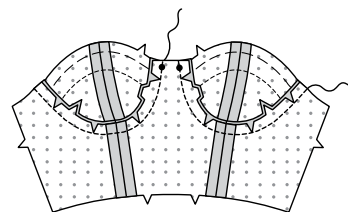
4. Stitch 1/4" (6mm) from lower edge of **BRA (BAND)** (7). Turn under lower edge along stitching, clipping as needed. Press.



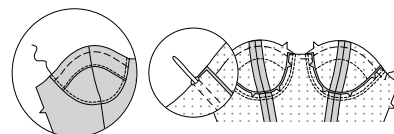
5. Pin bra band to upper edge of bra, **RIGHT** sides up, matching notches, and large and small dots. Baste raw edges. **EDGESTITCH** pressed edge of bra band.



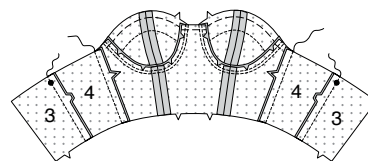
6. Pin bra to bodice front matching notches seams and small dots, clipping bodice, as needed. Stitch. Press seam toward bra.



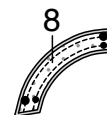
7. To form channel for underwire, **TOPSTITCH** bra 1/4" (6mm) from seam. Insert underwire through channel. Baste across upper edges.



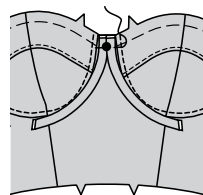
8. Stitch **BODICE SIDE BACK** (4) to **BODICE BACK** (3) at side back seams matching notches and large dots. Stitch bodice side back to bodice front at sides.



9. Stitch two **STRAP** (8) sections, **RIGHT** sides together, matching large and small dots, leaving ends open. Trim.



10. Turn **RIGHT** sides out. Press. On **OUTSIDE**, pin one end of each strap to bra at center front matching large dots. Baste.



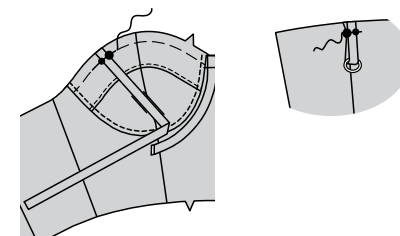
11. With **RIGHT** sides together, fold **SHOULDER STRAP** (9) and **LOOP** (10) in half lengthwise having raw edges even. Stitch long edges and unmarked end of shoulder strap in a 3/8" (1cm) seam, leaving open between large and small dots, as shown. Stitch long edges of loop in a 3/8" (1cm) seam, leaving ends open. Trim.



12. Turn **RIGHT** sides out. Press. Baste end of shoulder strap. Slip one end of loop through "O" ring bringing ends together. Baste.

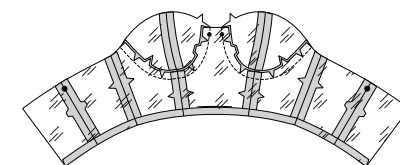


13. On **OUTSIDE**, pin shoulder strap to bra front matching large and small dots. Baste. On **OUTSIDE**, pin loop to bodice back matching large and small dots. Baste.

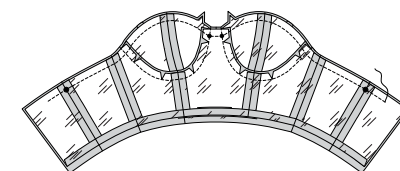


## LINING

14. Stitch bodice **LINING** seams together same as bodice, disregarding bra band, inserting underwire, and straps. Turn under 5/8" (1.5cm) on lower edge of lining. Press.

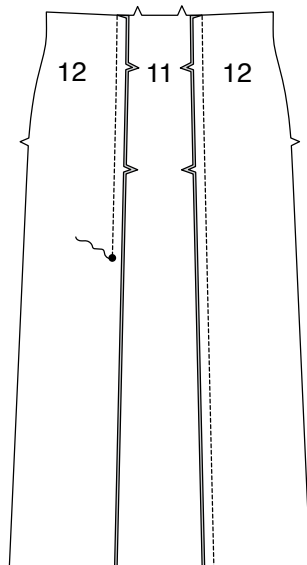


15. With **RIGHT** sides together, pin lining to bodice, matching seams, center fronts, and symbols, having raw edges even. Baste. Stitch upper edge to within 2" (5cm) of back edges, being careful not to catch in free ends of straps. Trim, but do not trim unstitched edges.

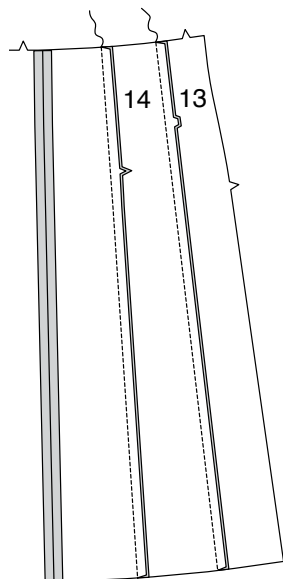


## SKIRT

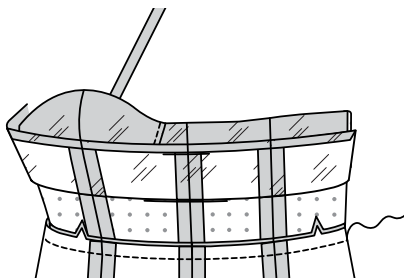
**16.** Pin SKIRT SIDE FRONT (12) sections to side edges of SKIRT FRONT (11). Stitch, leaving open below large dot on LEFT side, back-stitching at large dot to reinforce.



**17.** Stitch SKIRT BACK (13) to SKIRT SIDE BACK (14) at side back edge, matching double notches. Stitch skirt side back to skirt front at sides.



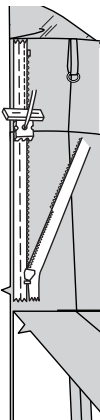
**18.** With RIGHT sides together, pin skirt to bodice matching seams, centers, and notches. Stitch, keeping lining free. Turn seam toward bodice. Press.



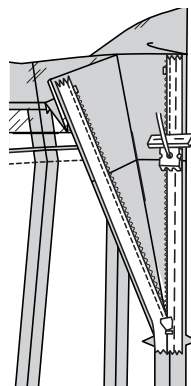
## INVISIBLE ZIPPER

**NOTE:** Stitch the invisible zipper using an invisible zipper foot. If the zipper is longer than the zipper opening, adjust after the zipper is inserted.

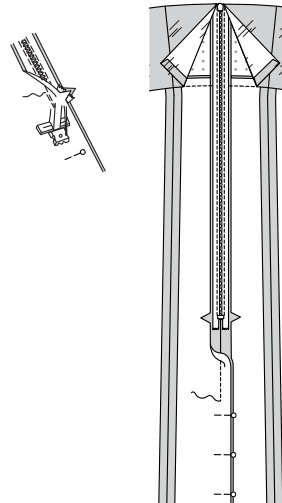
**19.** Open out bodice lining. Open the zipper and press the tape using a cool iron. On OUTSIDE, pin RIGHT side of the zipper face down on the RIGHT side of the zipper opening. Have the coil along the seam line, the tape within the seam allowance and the top stop 3/4" (2cm) below upper edge, as shown. Hand-baste along center of the tape. Position zipper foot at the top of the zipper with RIGHT groove of the foot over coil. Stitch along tape to the notch. Back-stitch to reinforce.



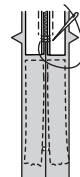
**20.** Pin the remaining half of the zipper to the LEFT side of the zipper opening in same manner. Make sure the upper and lower edges of the garment are even. Hand-baste along the center of the tape. Position zipper foot at the top of the zipper with LEFT groove over the coil. Stitch along tape to the notch. Back-stitch to reinforce.



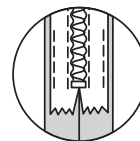
**21.** Close zipper and check that it is invisible from the OUTSIDE. Pull the free ends of the zipper tape away from the seam allowance. Pin remaining center back seam together below zipper. Position zipper foot all the way to the LEFT so the needle goes down through the outer notch of the foot. Start stitching seam 1/4" (6mm) above lowest stitch and slightly to the LEFT. Stitch seam for about 3" (7.5cm). Stitch remainder of seam using your regular presser foot.



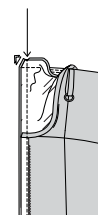
**22.** If the zipper is longer than the opening, using a strong thread, hand-sew a few small stitches across ends of coils at end of opening. Trim away lower end of zipper tape to within 5/8" (1.5cm) of hand-stitches.



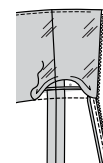
**23.** If you prefer, open out each seam allowance at end of zipper and stitch tape to seam allowance.



**24.** Open out back opening of dress, rolling the zipper teeth away from the opening edge. Turn back bodice lining to OUTSIDE. With RIGHT sides together, pin back and back upper edges of dress and lining together. Stitch remaining upper edge of back, connecting with previous stitching. Trim seam. Stitch across lining 1/2" (1.3cm) from back edges, keeping zipper teeth free. Trim corner. DO NOT trim center back edges. UNDERSTITCH lining as far as possible.

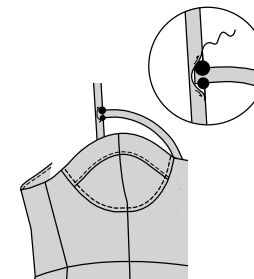


**25.** Turn bodice lining to inside. Press. Pin pressed edge of lining over waist seam, covering stitching. SLIPSTITCH in place.

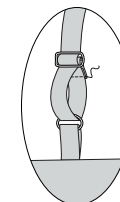


## FINISHING

**26.** Insert raw end of strap into opening on shoulder strap. SLIPSTITCH opening closed.

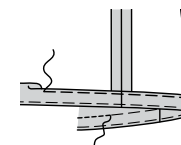


**27.** Thread end of shoulder strap through slider and through "O" ring on loop. Thread end of strap over center bar of slider beneath strap. Turn back end and stitch to under strap, leaving upper strap free to adjust.

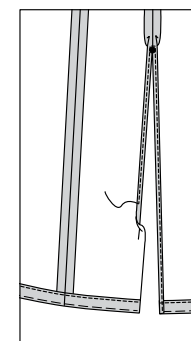


**28.** Turn up 1-1/4" (3.2cm) hem on lower edge of dress. Baste close to fold. Trim hem to an even width. Turn under 1/4" (6mm) on raw edge. Press. Baste close to upper pressed edge.

**TOPSTITCH** hem in place along upper basting, as shown.



**29.** Make a 5/8" (1.5cm) **NARROW HEM** on opening edges below large dot, squaring stitching at large dot.





# Congrats!

You've completed your sewing adventure

---

## SHARE YOUR LOOK



Post your pattern and tag us  
[@simplicity\\_creative\\_group](#) and [#knowMepatterns](#)  
for a chance to be featured on our social media.

Look for more PDF patterns at [simplicity.com](https://www.simplicity.com)

Have a question or need help with your sewing project call us at  
1-800-782-0323



KnowMe ©2023 a division of IG Design Group Americas Inc. • Atlanta, GA 30342 USA [www.thedesigngroup.com](http://www.thedesigngroup.com) • All Rights Reserved. [www.mccall.com](http://www.mccall.com) • Made in the U.S.A. Fabriqué aux États-Unis.  
To be used for individual private home use only and not for commercial or manufacturing purposes. • A usage privé seulement et non à des fins commerciales ou de production en série. • Para uso privado solamente, no se puede utilizar con propósitos de comercialización o de producción en serie.