



KEECHI B STYLE  
**knowME**  
BY mimi g

ME2093

Average

**MISSES' AND WOMEN'S TOP AND SKIRT**

**Suggested Fabrics:** A: Cotton Blends, Double Georgette, Linen Blends, Poplin, Shirtings. B: Cotton Blends, Denim, Linen Blends, Stretch Wovens, Twill. **Stay B:** Netting. **Lining A,B:** Cotton Blends, Polyester Blends. **Interfacing B:** Lightweight Fusible.

**Notions:** A: One 7" (18cm) invisible zipper, 2¼ yds. (2.1m) of ¾" (1cm) elastic. B: One 7" (18cm) zipper (adjust to fit), two 9" (23cm) zippers (adjust to fit), one ¾" (1.5cm) button.

Sizes	10	12	14	16	18	20W	22W	24W	26W	28W
European	36	38	40	42	44	46	48	50	52	54

**BODY MEASUREMENTS: Select pattern size based on body measurements**

<b>Bust</b>	32½	34	36	38	40	42	44	46	48	50	Ins.
<b>Waist</b>	25	26½	28	30	32	35	37	39	41½	44	"
<b>Hip-9" below waist</b>	34½	36	38	40	42	44	46	48	50	52	"
<b>Back-neck to waist</b>	16	16¼	16½	16¾	17	17¼	17¾	17¾	17¾	17¾	"

<b>Top A</b>	45**	2¼	2¼	2¼	2¼	2¼	3	3	3	3	3¾	Yds.
	60**	2¼	2¼	2¼	2¼	2¼	2¼	2¼	2¼	2¾	2¾	"
<b>Lining</b>	45***	1¾	1¾	2	2	2	2	2	2½	2½	2¾	"
	60**	2¼	2¾	2¾	2¾	2¾	3	3	3	3	3	"
<b>Skirt B</b>	45**	3	3	3	3	3½	4	4½	4½	4½	4½	Yds.
	60**	2¼	2¾	2¾	2¾	2¾	3	3	3	3	3	"
<b>Stay</b>	54" - ½ yd.											
<b>Lining</b>	45*** - ¾ yd.											
<b>Interfacing</b>	20" - 1 yd.											

**FINISHED GARMENT MEASUREMENTS (Includes Design and Wearing Ease)**

<b>A Bust</b>	43½	45	47	49	51	55¼	57¼	59¼	61¼	63¼	Ins.	
<b>A Waist</b>	42½	44	46	48	50	54¼	56¼	58¼	60¼	62¼	"	
<b>B Waist</b>	27	28½	30½	32½	34½	35	37	39	41	43	"	
<b>B Hip</b>	37	38½	40½	42½	44½	45½	47½	49½	51½	53½	"	
<b>Finished back length from base of neck</b>												
<b>Top A</b>	22	22¼	22½	22¾	23	22¼	22½	22¾	23	23¼	Ins.	
<b>Finished back length from waist</b>												
<b>Skirt B</b>	27	27	27	27	27	28	28	28	28	28	Ins.	

\*with nap \*\*without nap

Moins Facile

**HAUT ET JUPE POUR JEUNES FEMMES ET FEMMES**

**Tissus Conseillés:** A: Cotonnades, Crêpe georgette double, Lin mélangés, Popeline, Shirtings. B: Cotonnades, Denim, Lin mélangés, Tissus tissés extensibles, Twill. **Soutien B:** Filet. **Doublure A,B:** Cotonnades, Mélanges de polyester. **Entoilage B:** Thermocollant léger.

**Mercerie:** A: 1 fermeture à glissière invisible de 18cm, 2.1m d'élastique de 1cm. B: 1 fermeture à glissière de 18cm (adaptez pour ajuster), 2 fermetures à glissière de 23cm (adaptez pour ajuster), 1 bouton de 1.5cm.

Tailles	10	12	14	16	18	20W	22W	24W	26W	28W
Françaises	38	40	42	44	46	48	50	52	54	56
Européen	36	38	40	42	44	46	48	50	52	54

**MESURES DU CORPS: Choisissez la taille du patron basée sur les mesures du corps**

<b>Poitrine</b>	83	87	92	97	102	107	112	117	122	127	cm
<b>Taille</b>	64	67	71	76	81	89	94	99	105	112	"

<b>Hanches (23cm au-dessous de la taille)</b>	88	92	97	102	107	112	117	122	127	132	cm
<b>Dos du cou à la taille</b>	40.5	41.5	42	42.5	43	44	44	44.5	45	45	"

<b>Haut A</b>	115cm*	2.6	2.7	2.7	2.7	2.7	2.7	2.7	2.7	2.9	m
	150cm*	2.1	2.1	2.1	2.1	2.1	2.1	2.1	2.2	2.2	"

<b>Doublure</b>	115cm**	1.7	1.7	1.8	1.8	1.8	1.8	1.8	2.3	2.3	2.4	m
	150cm*	2.1	2.1	2.2	2.2	2.2	2.7	2.7	2.7	2.7	2.7	"

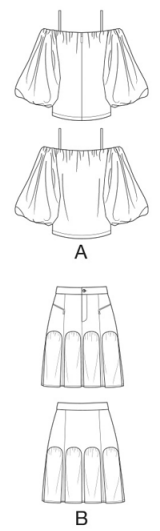
<b>Jupe B</b>	115cm*	2.6	2.6	2.6	2.6	2.7	3.7	3.8	3.8	3.8	m
	150cm*	2.1	2.1	2.2	2.2	2.2	2.7	2.7	2.7	2.7	"

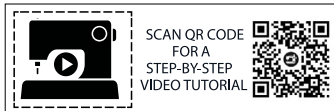
<b>Soutien</b>	137cm - 0.5m											
<b>Doublure</b>	115cm** - 0.2m											
<b>Entoilage</b>	51cm - 0.9m											

**MESURES DES VÊTEMENTS FINI (Motif et aisance de port compris)**

<b>A Poitrine</b>	110	114	119	124	130	140	145	150	156	161	cm	
<b>A Taille</b>	108	112	117	122	127	138	143	148	153	158	"	
<b>B Taille</b>	69	72	77	83	88	89	94	99	104	109	"	
<b>B Hanches</b>	94	98	103	108	113	116	121	126	131	136	"	
<b>Longueur finie – dos, votre nuque à l'ourlet</b>												
<b>Haut A</b>	56	57	57	58	58	57	57	58	58	59	cm	
<b>Longueur finie – dos, taille à l'ourlet</b>												
<b>Jupe B</b>	69	69	69	69	69	71	71	71	71	71	cm	

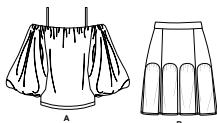
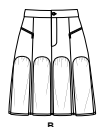
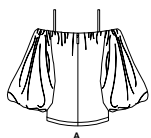
\*avec sens \*\*sans sens



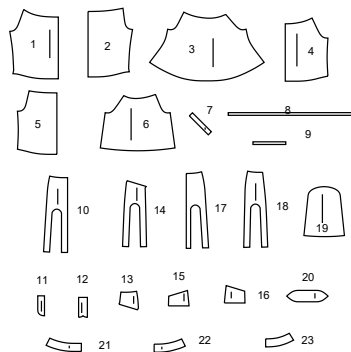


SCAN QR CODE FOR A STEP-BY-STEP VIDEO TUTORIAL

@keechibstyle

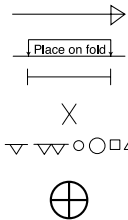


23 PATTERN PIECES



- 1 FRONT - A
- 2 BACK - A
- 3 SLEEVE - A
- 4 FRONT LINING - A
- 5 BACK LINING - A
- 6 SLEEVE LINING - A
- 7 SHOULDER STRAP - A
- 8 ELASTIC GUIDE FOR NECK - A
- 9 ELASTIC GUIDE FOR SLEEVE - A
- 10 FRONT - B
- 11 LEFT FLY FACING - B
- 12 RIGHT FLY - B
- 13 UPPER SIDE FRONT - B
- 14 LOWER SIDE FRONT - B
- 15 POCKET FACING - B
- 16 POCKET - B
- 17 BACK - B
- 18 SIDE BACK - B
- 19 GODET - B
- 20 STAY - B
- 21 RIGHT FRONT WAISTBAND - B
- 22 LEFT FRONT WAISTBAND - B
- 23 BACK WAISTBAND - B

PATTERN MARKINGS



**GRAINLINE:** Place on straight grain of fabric, parallel to selvage or fold.  
**FOLDLINE:** Place line on fold of fabric.  
**BUTTONHOLE MARKING:** Indicates exact length and placement of buttonholes.  
**BUTTON MARKING:** Indicates button placement.  
**NOTCHES AND SYMBOLS:** For matching seams and construction details.  
 Indicates the Bustline, Waistline, Hip and/or Biceps. Measurements refer to circumference of Finished Garment (Body Measurement + Wearing Ease + Design Ease). Adjust pattern if necessary. The measurement excludes pleats, tucks, darts and seam allowances.  
**SEAM ALLOWANCE:** 5/8" (1.5cm) included unless otherwise indicated, but not printed on tissue.

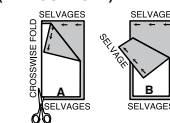
ADJUST IF NECESSARY

Lengthen or Shorten at adjustment lines (==) or where indicated on pattern. If substantial length is added, you may need to purchase additional fabric.  
**TO SHORTEN:** Crease along adjustment line. Make a fold half the amount needed. Tape in place.  
**TO LENGTHEN:** Slash between adjustment lines. Spread amount as needed, keeping edges parallel. Tape over paper.  
 When Alteration lines are not on tissue, lengthen or shorten at lower edge.

CUTTING AND MARKING

**SHRINK FABRIC** if not labeled pre-shrunk. Press.  
**CIRCLE LAYOUT** for View, Size, Fabric Width.  
 Use **WITH NAP** layout for fabrics with one-way designs, nap, pile or surface shading. Because most knits have surface shading, a with nap layout is used.  
 For **DOUBLE THICKNESS (WITH FOLD)** - fold fabric with right sides together.  
**\* DOUBLE THICKNESS (WITHOUT FOLD)** - For fabrics with nap, fold fabric crosswise, right sides together. Mark as shown. Cut along crosswise fold of fabric (A). Turn upper layer 180° so arrows go in same direction and place over lower layer, right sides together (B).  
 For **SINGLE THICKNESS** - place fabric right side up. (For Fur Pile fabrics, place pile side down.)

★ Cut other pieces first, allowing enough fabric to cut this piece. Open fabric. For "Cut 1" pieces, cut piece once on single layer of fabric with piece face up on right side of fabric.  
 Pattern may have cutting lines for several sizes. Select the proper cutting line or pattern pieces for your size.  
 Before **CUTTING** place all pieces on fabric according to layout. Pin. (Layouts show approximate position of pattern pieces; position may vary according to your pattern size.) Cut **ACCURATELY**, cutting notches outward.  
 Before removing pattern, **TRANSFER MARKINGS** and lines of construction to Wrong Side of fabric, using the Pin and Chalk Pencil method or Tracing Paper and Dressmaker Wheel. Markings needed on right side of fabric should be thread traced.  
**NOTE:** Broken-line boxes (a| b| c|) in layouts represent pieces cut by measurements provided.



CUTTING LAYOUTS

RIGHT SIDE OF PATTERN	WRONG SIDE OF PATTERN	RIGHT SIDE OF FABRIC	WRONG SIDE OF FABRIC
-----------------------	-----------------------	----------------------	----------------------

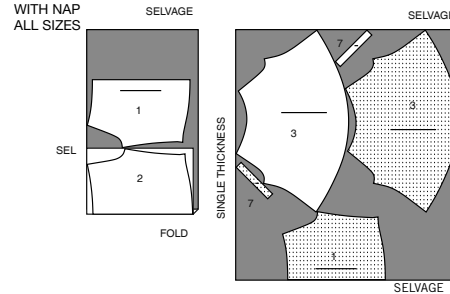
TOP A

USE PIECES: 1 2 3 7

45" (115 CM)  
WITH NAP  
ALL SIZES



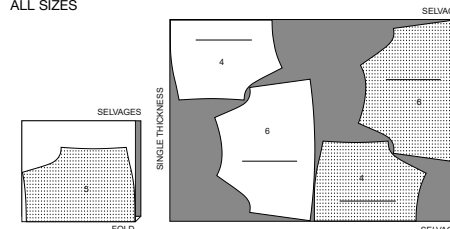
60" (150 CM)  
WITH NAP  
ALL SIZES



LINING A

USE PIECES: 4 5 6

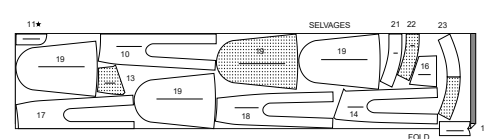
45" (115 CM)  
WITH NAP  
ALL SIZES



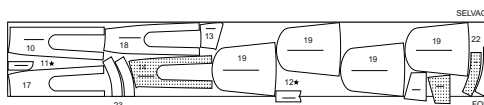
SKIRT B

USE PIECES: 10 11 12 13 14 16 17 18 19 21 22 23

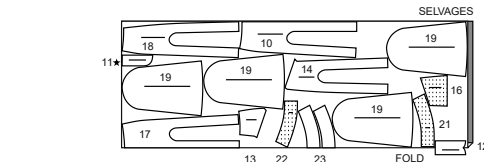
45" (115 CM)  
WITH NAP  
SIZES 10-12-14-16-18



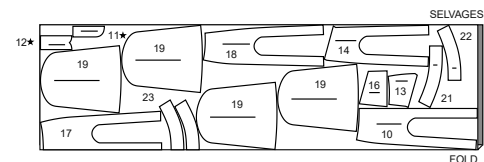
45" (115 CM)  
WITH NAP  
SIZES 20W-22W-24W-26W-28W



60" (150 CM)  
WITH NAP  
SIZES 10-12-14-16-18



60" (150 CM)  
WITH NAP  
SIZES 20W-22W-24W-26W-28W



LINING B

USE PIECE: 15

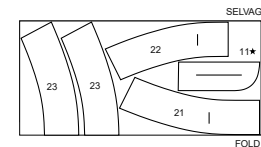
45" (115 CM)  
WITH NAP  
ALL SIZES



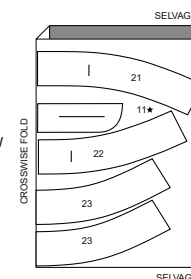
INTERFACING B

USE PIECES: 11 21 22 23

20" (51 CM)  
SIZES 10-12-14-16-18



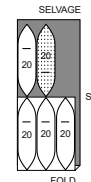
20" (51 CM)  
SIZES 20W-22W-24W-26W-28W



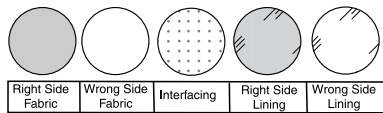
STAY B

USE PIECE: 20

54" (137 CM)  
ALL SIZES

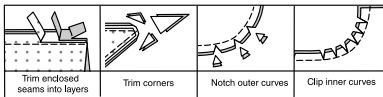


**SEWING INFORMATION**  
FABRIC KEY



**SEAM ALLOWANCES**

Use 5/8" (1.5cm) seam allowances unless otherwise indicated.



**PIN AND FIT**

Pin or baste seams, **RIGHT SIDE TOGETHER**, matching notches. Fit garment before stitching major seams.

**PRESS**

Press seam allowances flat; then open unless otherwise stated. Clip where necessary so they lie flat.

**GLOSSARY**

Sewing terms appearing in **BOLD TYPE** in Sewing Instructions are explained below.

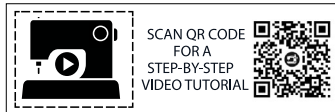
**GATHER** – Loosen needle tension slightly. With **RIGHT** side up, stitch 5/8" (1.5cm) from cut edge using a long stitch. Stitch again 1/4" (6mm) from the first stitching within the seam allowance.

**EDGE FINISH** – Finish raw edge with a zigzag stitch; OR overlock stitch; OR stitch 1/4" (6mm) from edge, turn under edge along stitching and stitch.

**NARROW HEM** – Press under hem allowance as indicated on tissue pattern. To form narrow hem, tuck under raw edge to meet crease. Press. Stitch hem in place.

**STAYSTITCH** – Stitch 1/2" (1.3cm) from cut edge in direction of arrows. This stitching stays in permanently to prevent stretching on curved edges. (Shown only in the first illustration.)

**UNDERSTITCH** – Press facing and seam away from garment, stitching through facing and seam allowances close to seam.



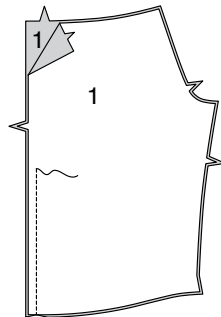
@keechiibstyle

**PATTERN PIECES WILL BE IDENTIFIED BY NUMBERS THE FIRST TIME THEY ARE USED.**

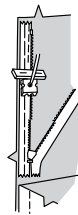
**STITCH 5/8" (1.5CM) SEAMS WITH RIGHT SIDES TOGETHER UNLESS OTHERWISE STATED.**

**TOP A**

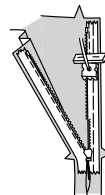
**1.** Pin center front edges of **FRONT (1)**, matching notches. Stitch from lower edge to within 3" (7.5cm) of notch.



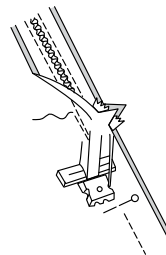
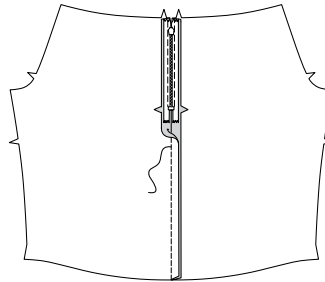
**2.** Open the zipper and press the tape flat on the **WRONG** side unrolling the coils. Do not press the coils. (Use a low iron setting.) On **OUTSIDE**, pin **RIGHT** side of the zipper face down on the **RIGHT** side of the zipper opening. Have the coil along the seam line, the tape within the seam allowance and the top stop a scant 3/4" (2cm) below upper edge, as shown. Hand-baste along center of the tape. Position zipper foot at the top of the zipper with **RIGHT** groove of the foot over coil. Stitch along tape to the notch. Backstitch to reinforce.



**3.** Pin the remaining half of the zipper to the **LEFT** side of the zipper opening in same manner. Make sure the upper and lower edges of the fronts are even. Hand-baste along center of tape. Position zipper foot at the top of the zipper with **LEFT** groove over the coil. Stitch along tape to the notch. Backstitch to reinforce.



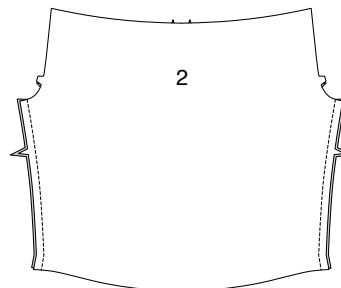
**4.** Close zipper and check that it is invisible from the **OUTSIDE**. Pull the free ends of the zipper tape away from the seam allowance. Pin remaining center front seam together below zipper. Position zipper foot all the way to the **LEFT** so the needle goes down through the outer notch of the foot. Start stitching seam 1/4" (6mm) above lowest stitch and slightly to the **LEFT**. Stitch remainder of seam connecting to previous stitching.



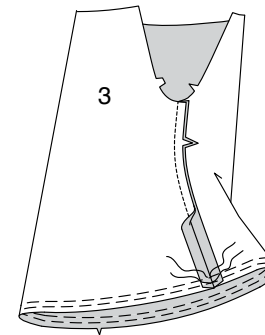
**5.** If the zipper is longer than the opening, using a strong thread, hand-sew a few small stitches across ends of coils at end of opening. Trim away lower end of zipper tape to within 5/8" (1.5cm) of hand-stitches. If you prefer, open out each seam allowance at end of zipper and stitch tape to seam allowance.



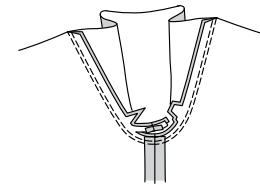
**6.** Stitch front to **BACK (2)** at side edges.



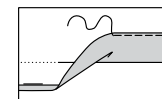
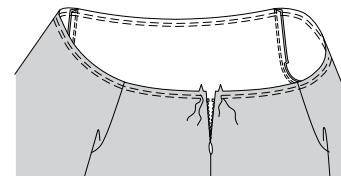
**7.** Stitch underarm edges of **SLEEVE (3)**. **GATHER** lower edge inside the 3/4" (2cm) seam line and 1/4" (6mm) from previous stitching within the seam allowance.



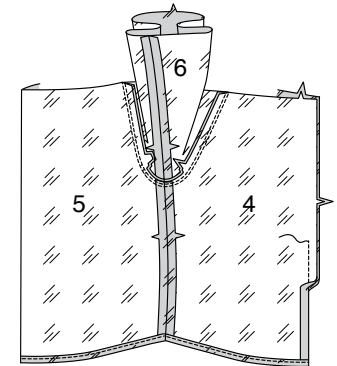
**8.** Turn sleeve **RIGHT** side out. Hold top **WRONG** side out with armhole toward you. With **RIGHT** sides together, pin sleeve to armhole edge, matching underarm seams and notches. Baste. Stitch. Stitch again 1/8" (3mm) from first stitching. Trim seam below notches close to stitching.



**9.** **GATHER** neck edge of top between the front notches. Press up 1-1/4" (3.2cm) hem allowance on lower edge of top. Turn under raw edge 1/4" (6mm). Stitch close to inner pressed edge.



**10.** Stitch lining sections **FRONT LINING (4)**, **BACK LINING (5)**, and **SLEEVE LINING (6)** together in the same manner as top. **NARROW HEM** lower edge of front and back lining.



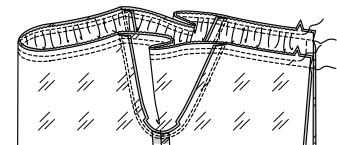
**11.** Fold **SHOULDER STRAP (7)** in half, lengthwise, with **RIGHT** sides together. Stitch long edges in a 3/8" (1cm) seam. With a needle, attach a strong thread to one end of strap.



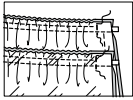
**12.** Draw needle eye forward, through fold, turning strap **RIGHT** side out. On **OUTSIDE**, baste straps to front and back lining, centering ends over small dots, having raw edges even.



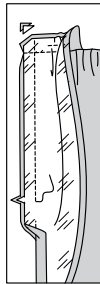
**13.** Open out center front opening edges of top, rolling the zipper teeth away from the opening edge. With **RIGHT** sides together, pin lining to top, matching centers and seams, pulling up gathering stitches to fit. Stitch upper edge in a 3/4" (2cm) seam. To form casing for elastic, stitch again 1/2" (1.3cm) from first stitching within the seam allowance, between front notches.



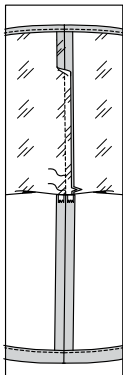
14. Cut a piece of elastic the length of the ELASTIC GUIDE FOR NECK (8). Thread elastic through neck seam casing. Stitch across ends at front notches.



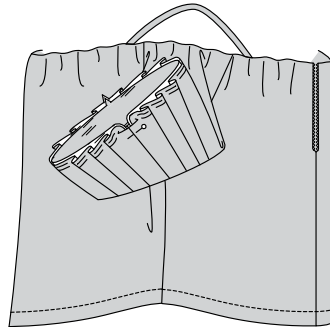
15. Pin front and lining opening edges together. Using an adjustable zipper foot, stitch 1/2" (1.3cm) from front edges, keeping zipper teeth free. Trim corners. Do not trim center front edges.



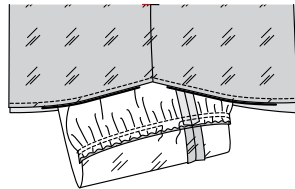
16. With lining pulled up, on UNDERSIDE, stitch remaining center front edges of front lining connecting to previous stitching.



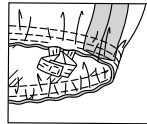
17. Turn top RIGHT side out; press. Slip sleeve in place. To match seams correctly, turn seam allowance on sleeve edges of top and lining toward each other at underarm seams, as shown. Anchor the turned edges with a pin.



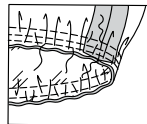
18. Pull sleeve through open lower edge of top, having WRONG sides out, separating the top sleeve from the lining sleeve. With RIGHT sides together, pin sleeve edges together, matching underarm seams and notches, pulling up gathering stitches on sleeve to fit. Remove anchoring pin. Stitch sleeve edge in a 3/4" (2cm) seam. To form casing for elastic, stitch again 1/2" (1.3cm) from first stitching within the seam allowance, leaving an opening to insert elastic.



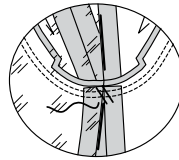
19. Cut a piece of elastic the length of the ELASTIC GUIDE FOR SLEEVE (9). Thread elastic through sleeve seam casing. Stitch across ends, securely.



20. Stitch opening in casing closed.



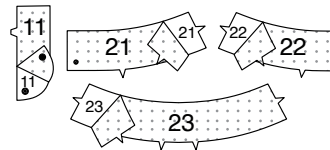
21. Turn sleeve back in place. Pull up lining, on UNDERSIDE, tack lining and sleeve together at armhole edge.



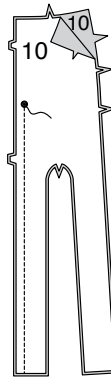
### SKIRT B

NOTE: It will be necessary to adjust the length of the zippers. This will be addressed in the directions.

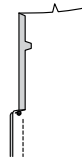
1. Pin interfacing to WRONG side of LEFT FLY FACING (11), RIGHT FRONT WAISTBAND (21), LEFT FRONT WAISTBAND (22), and BACK WAISTBAND (23). Fuse interfacing in place following manufacturer's directions.



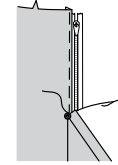
2. To make a LEFT fly front opening in front, stitch FRONT (10) sections together at center front below the large dot.



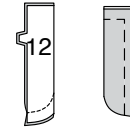
3. Turn in RIGHT front opening edge along foldline; press.



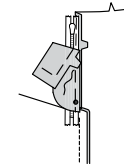
4. Place closed zipper (face up) under right front opening edge, having pressed edge close to zipper teeth and zipper stop at a generous 5/8" (1.5cm) below upper edge. Using a zipper foot, baste close to pressed edge.



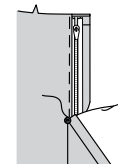
5. With right sides together, fold RIGHT FLY (12) along foldline. Stitch lower edge. Trim. Turn. Press. Baste raw edges.



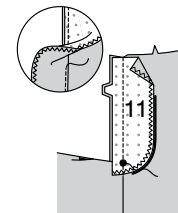
6. On inside, pin right fly to right front opening edge (over zipper), matching notches and small dots, having raw edges even. Baste along previous basting for zipper.



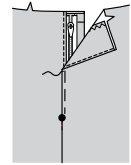
7. On outside, using a zipper foot, stitch close to pressed edge of front through all layers.



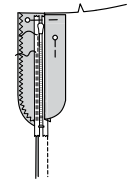
8. EDGE FINISH outer edge of LEFT FLY FACING (11). Pin fly facing to left front opening edge, matching notches, and large dots. Stitch, ending at large dot. Trim. UNDERSTITCH fly facing. Turn facing to inside.



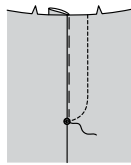
9. Lap LEFT front over RIGHT, matching centers. Baste close to edge through all thicknesses.



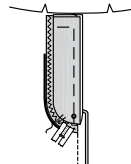
10. Pin RIGHT fly out of the way. Open out fly facing. Pin remaining zipper tape to fly facing, keeping LEFT front free. Using a zipper foot, stitch in place close to zipper teeth and along center of zipper tape.



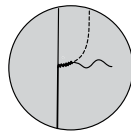
11. Turn facing down. On outside, stitch LEFT front along stitching line, keeping RIGHT fly free.



12. Turn RIGHT fly back in place. On inside, hand tack fly and facing together at lower edge, as shown. Trim away excess zipper tape even with lower edge of fly, if needed.

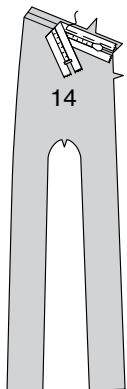


13. If desired, on outside, machine-stitch a bar tack across lower end of fly through all thicknesses.

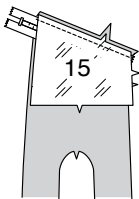


**NOTE:** When applying zippers to pockets, you will find that the first pass of stitching may be VERY close to the outer edge of the zipper tape. That is fine, as the zipper will be secured after the sections are folded on foldlines and topstitched.

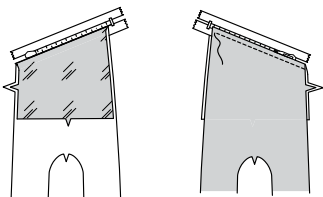
**14.** To make side front with pockets, on **OUTSIDE**, pin closed zipper face down to **LOWER SIDE FRONT (14)** with center of teeth along foldline, placing top stop at side front seamline. (Zipper will extend beyond side seam allowance.) Baste along 1/4" (6mm) seamline.



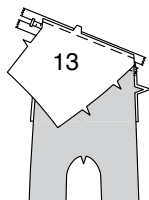
**15.** With **RIGHT** sides together and raw edges even, pin **POCKET FACING (15)** to lower side front over zipper, matching notches. Stitch in a 1/4" (6mm) seam.



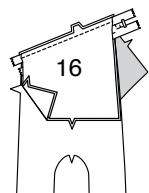
**16.** Fold upper edge of lower side front to **INSIDE** along foldline; press, pressing out the zipper. On **OUTSIDE**, topstitch 1/4" (6mm) from foldline, using an adjustable zipper foot.



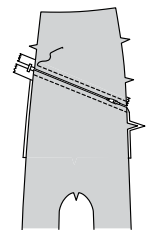
**17.** With **RIGHT** sides together, pin **UPPER SIDE FRONT (13)** to lower side front, matching foldlines. Baste upper side front to zipper along 1/4" (6mm) seamline.



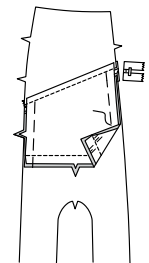
**18.** On **INSIDE**, with right sides together, pin **POCKET (16)** to upper side front, matching notches. Stitch in a 1/4" (6mm) seam.



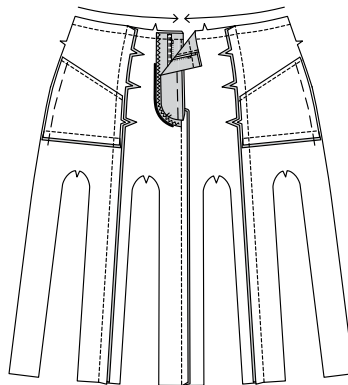
**19.** Press up upper side front along foldline. On **OUTSIDE**, topstitch 1/4" (6mm) from foldline, using an adjustable zipper foot.



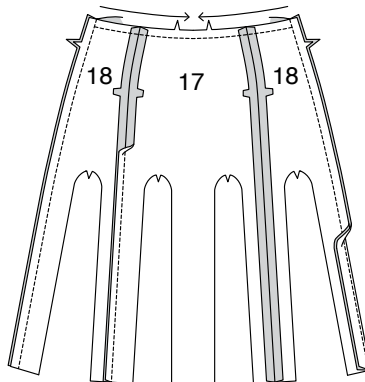
**20.** On **INSIDE**, stitch pocket to pocket facing along lower edges. Baste side edges through all thicknesses. Trim zipper extension even with seam allowance.



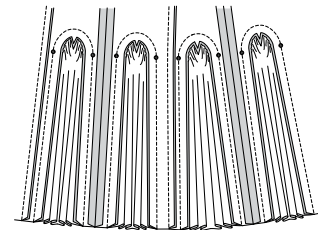
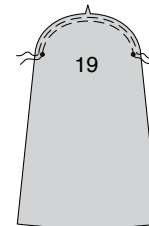
**21.** With **RIGHT** sides together and raw edges even, pin side front to front, matching notches. Stitch. Press seam toward front. **STAYSTITCH** upper edge of front.



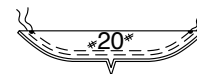
**22.** With **RIGHT** sides together and raw edges even, pin **BACK (17)** to **SIDE BACK (18)**, matching notches; Stitch. Press seams open. **STAYSTITCH** upper edge of back. Stitch front to back at side edges. Press seam toward back.



**23.** **GATHER** notched edge of **GODET (19)** between the small dots. With **RIGHT** sides together and raw edges even, pin godet sections to skirt, matching small dots and notches, pulling up gathering stitches to fit. Baste; stitch. Press seam toward godet.



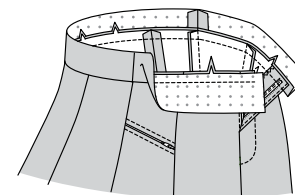
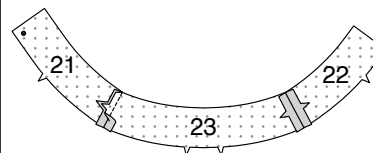
**24.** Fold **STAY (20)** in half along foldline with **WRONG** sides together. **GATHER** between small dots.



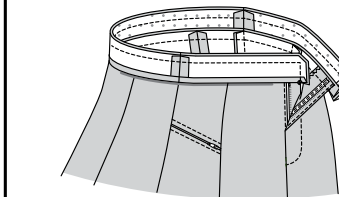
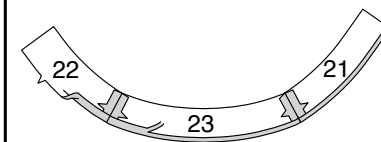
**25.** Pin stay to **INSIDE** of godet with raw edges even, matching small dots and notches, pulling up gathering stitches to fit. Stitch close to seam within the seam allowance.



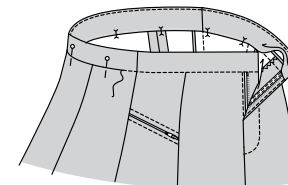
**26.** Stitch **RIGHT FRONT WAISTBAND (21)** and **LEFT FRONT WAISTBAND (22)** to **BACK WAISTBAND (23)** at ends. With **RIGHT** sides together and raw edges even, pin waistband to skirt, matching centers, seams, small dots, and notches. Stitch. Trim seam. Press seam toward waistband; pressing waistband out.



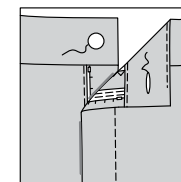
**27.** Stitch ends of waistband facing in the same manner as waistband. Press under 1/2" (1.3cm) on notched edge. Trim to 1/4" (6mm). With **RIGHT** sides together and raw edges even, pin facing to waistband, matching centers and seams. Stitch upper edge, **LEFT** front edge, and **RIGHT** front extension to the small dot. Trim seam and corners.



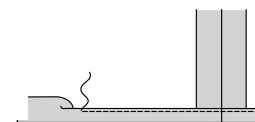
**28.** **UNDERSTITCH** the facing. Turn facing to **INSIDE**; press. On **INSIDE**, pin pressed edge of facing over seam, placing pins on **OUTSIDE**. On **OUTSIDE**, stitch in the ditch of the seam, catching in pressed edge of facing on the **INSIDE**.



**29.** Make buttonhole on **LEFT** front waistband at marking. Sew button to **RIGHT** waistband extension at small dot.



**30. NARROW HEM** lower edge of skirt.





# Congrats!

You've completed your sewing adventure

---

## SHARE YOUR LOOK



Post your pattern and tag us  
[@simplicity\\_creative\\_group](#) and [#knowMepatterns](#)  
for a chance to be featured on our social media.

Look for more PDF patterns at [simplicity.com](https://www.simplicity.com)

Have a question or need help with your sewing project call us at  
1-800-782-0323

