



LYNN BRANNELLY
knowME
BY **mimi g**

ME2092



Scan QR code for a Sew-Along video tutorial.



@LWS_lynnwardrobesews

Designed and printed in USA

Average

MISSES' TOP AND PANTS

Suggested Fabrics: Lace, Novelty Lace. **Lining:** Cotton Blends, Polyester Blends. **Interfacing:** Lightweight Fusible.

Notions: **A:** One 20" (51cm) invisible zipper, 4½ yds. (4.0m) of 1½" - 2" (4cm - 5cm) pre-gathered lace trim, 3 yds. (2.7m) of ¾" - ½" (1cm - 1.3cm) flexible trim. **B:** One 7" (18cm) invisible zipper.

Sizes	8	10	12	14	16	18	20	22	24	26
European	34	36	38	40	42	44	46	48	50	52

BODY MEASUREMENTS: Select pattern size based on body measurements

Bust	31½	32½	34	36	38	40	42	44	46	48	Ins.
Waist	24	25	26½	28	30	32	34	37	39	41	"
Hip-9" below waist	33½	34½	36	38	40	42	44	46	48	50	"
Back-neck to waist	15¾	16	16¼	16½	16¾	17	17¼	17½	17¾	18	"

Top A	45**	1½	1½	1½	1½	1¾	1¾	1¾	1¾	1¾	1¾	Yds.
	60**	1	1	1	1	1	1	1	1½	1½	1½	"
Lining	45***	1½	1½	1½	1½	1¾	2½	2½	2¼	2¼	"	
Interfacing -	20"	½ yd.										
Pants B	45**	2¼	2¾	2½	2½	2¾	2¾	2¾	2¾	2¾	Yds.	
	60**	1½	1½	1½	1½	1¾	2¼	2¼	2¾	2¾	"	
Lining	45***	2¾	2¾	2¾	2¾	2¾	2¾	3	3	3	"	
Interfacing	20"	¾	¾	¾	¾	¾	¾	¾	¾	¾	"	

FINISHED GARMENT MEASUREMENTS (Includes Design and Wearing Ease)

A Bust	35	36	37½	39½	41½	43½	45½	47½	49½	51½	Ins.
B Hip	35½	36½	38	40	42	44	46	48	50	52	"
Width, each leg											
Pants B	19½	20	20½	21½	22½	23½	24½	25½	26½	27½	Ins.
Finished back length from base of neck											
Top A	21¾	22	22¼	22½	22¾	23	23¼	23½	23¾	24	Ins.
Finished side length from waist											
Pants B (sits 1" below waist)	41¾	42	42¼	42½	42¾	43	43¼	43½	43¾	44	Ins.

*with nap **without nap

Moins Facile

HAUT ET PANTALON POUR JEUNES FEMMES

Tissus Conseillés: Dentelle, Dentelle fantaisie. **Doublure:** Cotonnades, Mélanges de polyester. **Entoilage:** Thermocollant léger.

Merci: **A:** 1 fermeture à glissière invisible de 51cm, 4,0m de garniture de dentelle préfoncée de 4cm - 5cm, 2,7m de garniture souple de 1cm - 1,3cm. **B:** 1 fermeture à glissière invisible de 18cm.

Tailles	8	10	12	14	16	18	20	22	24	26
Françaises	36	38	40	42	44	46	48	50	52	54
Européen	34	36	38	40	42	44	46	48	50	52

MESURES DU CORPS: Choisissez la taille du patron basée sur les mesures du corps

Poitrine	80	83	87	92	97	102	107	112	117	122	cm
Taille	61	64	67	71	76	81	87	94	99	104	"
Hanches (23cm au-dessous de la taille)	85	88	92	97	102	107	112	117	122	127	cm
Dos du cou à la taille	40	40,5	41,5	42	42,5	43	44	44,5	45	46	"

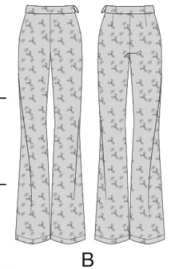
Haut A	115cm*	1.0	1.0	1.0	1.0	1.1	1.1	1.1	1.5	1.5	1.6	m
	150cm*	0.8	0.9	0.9	0.9	0.9	0.9	0.9	1.0	1.0	1.0	"
Doublure	115cm**	1.4	1.5	1.5	1.5	1.5	1.6	1.9	1.9	2.1	2.1	"
Entoilage	51cm	- 0.5	m									

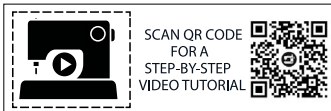
Pantalons B	115cm*	2.1	2.2	2.3	2.3	2.3	2.4	2.5	2.5	2.5	2.5	m
	150cm*	1.4	1.4	1.4	1.4	1.4	1.5	2.1	2.1	2.2	2.4	"
Doublure	115cm**	2.4	2.4	2.4	2.4	2.4	2.6	2.6	2.7	2.7	2.7	"
Entoilage	51cm	0.6	0.6	0.6	0.6	0.7	0.7	0.7	0.7	0.7	0.8	"

MESURES DES VÊTEMENTS FINI (Motif et aisance de port compris)

A Poitrine	89	91	95	100	105	110	116	121	126	131	cm
B Hanches	90	93	97	102	107	112	117	122	127	132	"
Largeur, chaque jambe											
Pantalons B	50	51	52	55	57	60	62	65	67	70	cm
Longueur finie – dos, votre nuque à l'ourlet											
Haut A	55	56	57	57	58	58	59	60	60	61	cm
Longueur finie – côté, taille à l'ourlet											
Pantalons B (repose 2.5cm dessous de la taille)	106	107	107	108	109	109	110	110	111	112	cm

*avec sens **sans sens



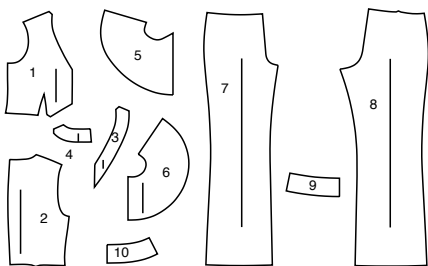


SCAN QR CODE
FOR A
STEP-BY-STEP
VIDEO TUTORIAL

@LWS_lynnwardrobesews



10 PATTERN PIECES



- 1 Front-A
- 2 Back-A
- 3 Front Interfacing-A
- 4 Back Interfacing-A
- 5 Peplum Front-A
- 6 Peplum Back-A
- 7 Front-B
- 8 Back-B
- 9 Front Waistband-B
- 10 Back Waistband-B

PATTERN MARKINGS

- GRAINLINE:** Place on straight grain of fabric, parallel to selvage or fold.
- FOLDLINE:** Place line on fold of fabric.
- BUTTONHOLE MARKING:** Indicates exact length and placement of buttonholes.
- BUTTON MARKING:** Indicates button placement.
- NOTCHES AND SYMBOLS:** For matching seams and construction details.
- Indicates the Bustline, Waistline, Hip and/or Biceps.** Measurements refer to circumference of Finished Garment (Body Measurement + Wearing Ease + Design Ease). Adjust pattern if necessary. The measurement excludes pleats, tucks, darts and seam allowances.
- SEAM ALLOWANCE:** 5/8" (1.5cm) included unless otherwise indicated, but not printed on tissue.

ADJUST IF NECESSARY

- Lengthen or Shorten at adjustment lines** (==) or where indicated on pattern. If substantial length is added, you may need to purchase additional fabric.
- TO SHORTEN:** Crease along adjustment line. Make a fold half the amount needed. Tape in place.
- TO LENGTHEN:** Slash between adjustment lines. Spread amount as needed, keeping edges parallel. Tape over paper.

When Alteration lines are not on tissue, lengthen or shorten at lower edge.

CUTTING AND MARKING

- SHRINK FABRIC** if not labeled pre-shrunk. Press.
- CIRCLE LAYOUT** for View, Size, Fabric Width.
- Use **WITH NAP** layout for fabrics with one-way designs, nap, pile or surface shading. Because most knits have surface shading, a with nap layout is used.
- For **DOUBLE THICKNESS (WITH FOLD)** - fold fabric with right sides together.
- *DOUBLE THICKNESS (WITHOUT FOLD)** - For fabrics with nap, fold fabric crosswise, right sides together. Mark as shown. Cut along crosswise fold of fabric (A). Turn upper layer 180° so arrows go in same direction and place over lower layer, right sides together (B).
- For **SINGLE THICKNESS** - place fabric right side up. (For Fur Pile fabrics, place pile side down.)
- ★ Cut other pieces first, allowing enough fabric to cut this piece. Open fabric. For "Cut 1" pieces, cut piece once on single layer of fabric with piece face up on right side of fabric.
- Pattern may have cutting lines for several sizes. Select the proper cutting line or pattern pieces for your size.
- Before **CUTTING** place all pieces on fabric according to layout. Pin. (Layouts show approximate position of pattern pieces; position may vary according to your pattern size.) Cut **ACCURATELY**, cutting notches outward.
- Before removing pattern, **TRANSFER MARKINGS** and lines of construction to Wrong Side of fabric, using the Pin and Chalk Pencil method or Tracing Paper and Dressmaker Wheel. Markings needed on right side of fabric should be thread traced.
- NOTE:** Broken-line boxes (a| b| c|) in layouts represent pieces cut by measurements provided.

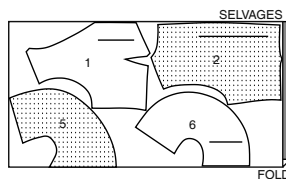
CUTTING LAYOUTS

RIGHT SIDE OF PATTERN	WRONG SIDE OF PATTERN	RIGHT SIDE OF FABRIC	WRONG SIDE OF FABRIC

TOP A

USE PIECES: 1 2 5 6

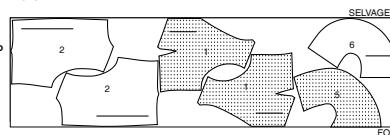
45" (115 CM)
WITH NAP
SIZES 8 10 12 14
16 18 20



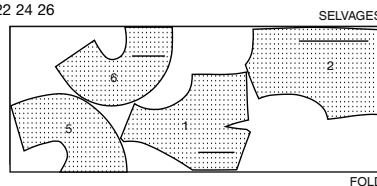
LINING A

USE PIECES: 1 2 5 6

45" (115 CM)
WITHOUT NAP
ALL SIZES



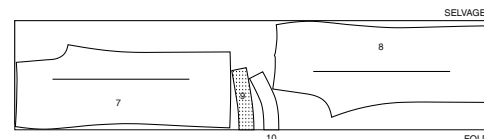
45" (115 CM)
WITH NAP
SIZES 22 24 26



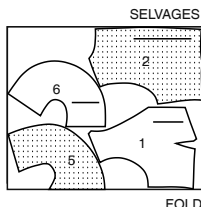
PANTS B

USE PIECES: 7 8 9 10

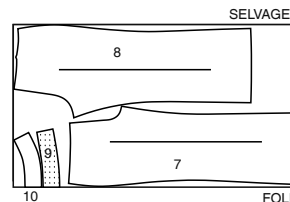
45" (115 CM)
WITH NAP
ALL SIZES



60" (150 CM)
WITH NAP
ALL SIZES



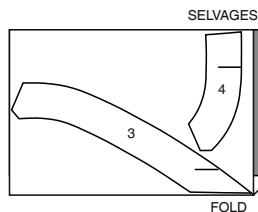
60" (150 CM)
WITH NAP
SIZES 8 10 12 14 16 18



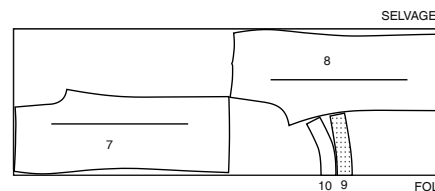
INTERFACING A

USE PIECES: 3 5 8

20" (51 CM)
ALL SIZES



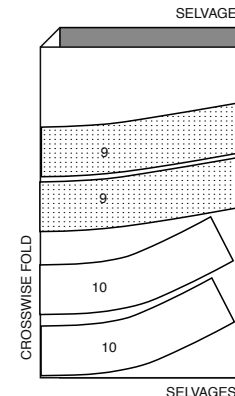
60" (150 CM)
WITH NAP
SIZES 20 22 24 26



INTERFACING B

USE PIECES: 9 10

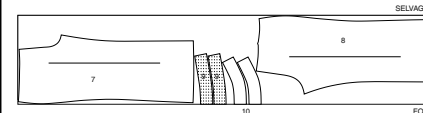
20" (51 CM)
ALL SIZES



LINING B

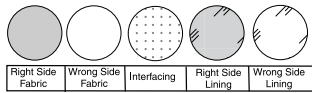
USE PIECES: 7 8 9 10

45" (115 CM)
WITH NAP
ALL SIZES



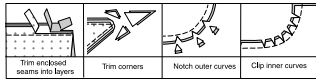
SEWING INFORMATION

FABRIC KEY



SEAM ALLOWANCES

Use 5/8" (1.5cm) seam allowances unless otherwise indicated.



PIN AND FIT

Pin or baste seams, **RIGHT SIDE TOGETHER**, matching notches. Fit garment before stitching major seams.

PRESS

Press seam allowances flat; then open unless otherwise stated. Clip where necessary so they lie flat.

GLOSSARY

SEWING TERMS APPEARING IN **BOLD TYPE** IN SEWING INSTRUCTIONS ARE EXPLAINED BELOW.

DESIGNER/BABY NARROW HEM – To hem, press under 1/4"(6mm) on lower edge. Stitch close to pressed edge.

Trim close to stitching. Press under 1/8"(3mm) and stitch in place.

SLIPSTITCH - Slide needle through a folded edge, then pick up a thread of underneath fabric.

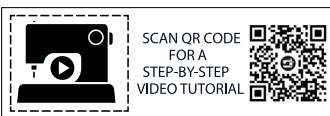
STAYSTITCH - Stitch 1/8" (3mm) from seamline in seam allowance (usually 1/2" (13mm) from raw edge).

TOPSTITCH - On outside, stitch 1/4" (6mm) from edge, seam or previous stitching, using presser foot as guide, or stitch where indicated in instructions.

UNDERSTITCH - Open out facing or underside of garment; stitch to seam allowance close to seam.

PATTERN PIECES WILL BE IDENTIFIED BY NUMBERS THE FIRST TIME THEY ARE USED.

STITCH 5/8" (1.5CM) SEAMS WITH RIGHT SIDES TOGETHER UNLESS OTHERWISE STATED.



SCAN QR CODE FOR A STEP-BY-STEP VIDEO TUTORIAL

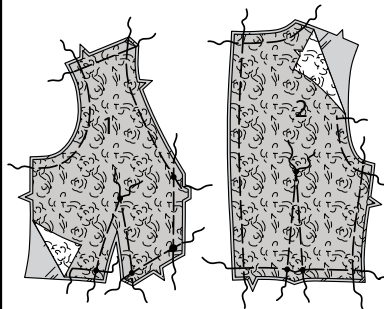
@LWS_lynnwardrobesevs

SEWING DIRECTIONS

TOP A

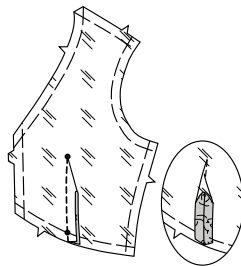
UNDERLINING

1. To underline, pin **WRONG** side of each **FRONT (1)** and **BACK (2)** section to **RIGHT** side of matching **LINING** sections. Baste through all symbols and all lines of construction, as shown, leaving both ends of thread free for easy removal. Remaining front and back lining sections will be used as lining.



FRONT AND BACK

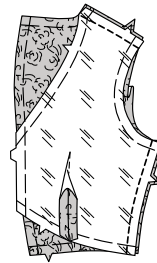
2. Stitch dart seam in front. Press seam open and point towards center front.



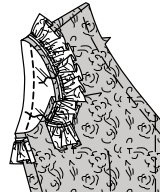
3. Stitch darts in back. Press toward center back.



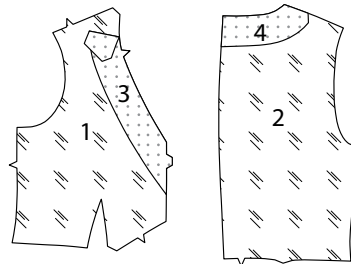
4. Stitch front to back at shoulders and sides.



5. With **RIGHT** sides together, pin pre-gathered trim to armhole edge, having bound edge of trim within seam allowance. Turn under one end of trim and lap over the other end at side seam. Baste. Stitch.

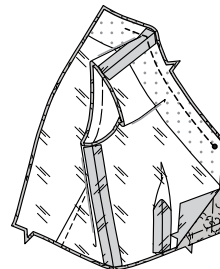


6. Fuse **FRONT INTERFACING (3)** to **WRONG** side of front **LINING**. Fuse **BACK INTERFACING (4)** to **WRONG** side of back **LINING**.



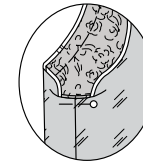
7. Stitch darts and seams for **LINING** in same manner as for top, disregarding instruction for trim.

With **RIGHT** sides together, pin lining to top at neck edge, matching notches, small dots, and shoulder seams. Stitch neck edge from small dot on front to within 2"(5cm) of back edges. Trim seam but **DO NOT** trim the unstitched neck edge.

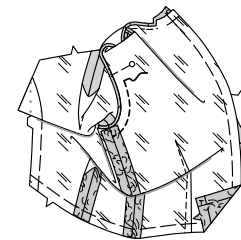


8. Turn **RIGHT** side out. Press.

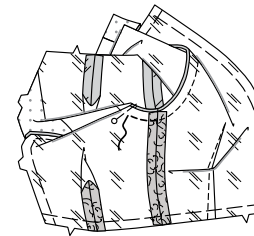
In order to match seams correctly, turn seam allowance on armhole edges of top and lining toward each other at side seams, as shown. Anchor the turned edges with a pin. (This will enable you to pin the edges together more easily when you are ready to stitch the armhole edges together.)



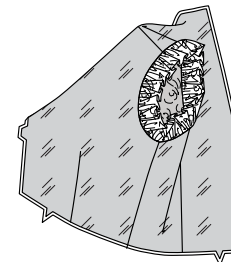
9. Lift lining up and pin armhole edges **RIGHT** sides together at side seam, removing the anchor pin. Pin back armhole edges together. Begin stitching the back armhole edges, starting at the side seam, up toward the shoulder seam, pulling the armhole edges through the "doughnut hole." Stitch as far as possible.



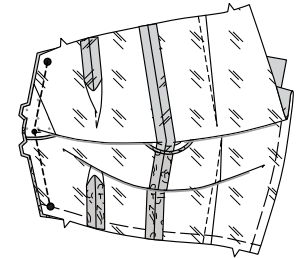
10. Pin front armhole edges together and stitch from side seam up toward shoulder, joining previous stitching.



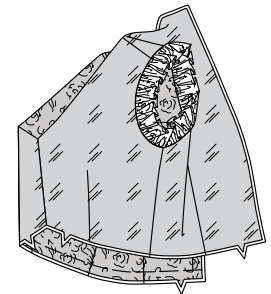
11. Turn right side out . Press.



12. Open out lining. Pin center front edges of top together, matching notches and small and large dots. Pin center front edges of lining together in same manner. Stitch top and lining between large and small dots, as shown, breaking the stitching at small dots.



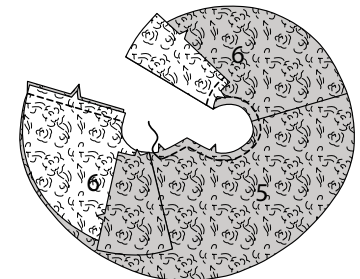
13. Turn lining down. Press.



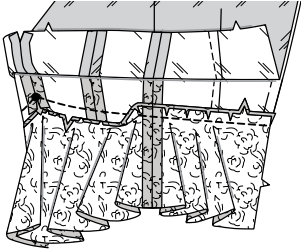
PEPLUM

14. Stitch **PEPLUM FRONT (5)** to **PEPLUM BACK (6)** at sides.

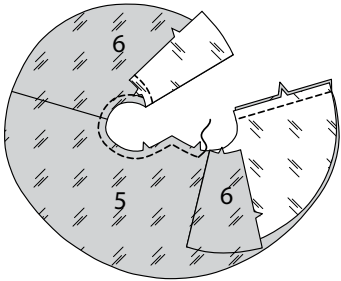
STAYSTITCH upper edge of peplum.



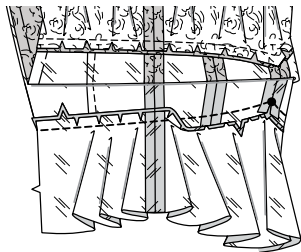
15. Open out lining. Pin peplum to lower edge of top, **RIGHT** sides together, matching notches, side seams, and large dots, clipping peplum to staystitching, as needed. Stitch, keeping top lining free. Press seam toward top.



16. Stitch seams in peplum lining same as peplum. **STAYSTITCH** upper edge of lining.



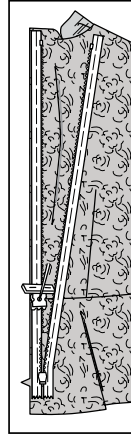
17. Pin peplum lining to lower edge of top lining, **RIGHT** sides together, matching notches, side seams, and large dots, clipping peplum lining to staystitching, as needed. Stitch, keeping top free. Press seam toward top.



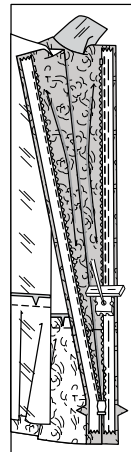
INVISIBLE ZIPPER

NOTE: Stitch the invisible zipper using an invisible zipper foot. If the zipper is longer than the zipper opening, adjust after the zipper is inserted.

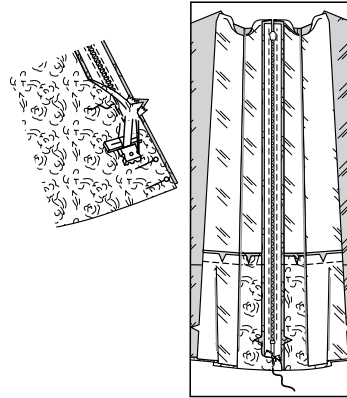
18. Open the zipper and press the tape using a cool iron. Keep the free upper edges of back lining out of the way. On **OUTSIDE**, pin **RIGHT** side of the zipper face down on the **RIGHT** side of the zipper opening. Have the coil along the seam line, the tape within the seam allowance and the top stop 3/4"(2cm) below upper edge, as shown. Hand-baste along center of the tape. Position zipper foot at the top of the zipper with **RIGHT** groove of the foot over coil. Stitch along tape to the notch. Back-stitch to reinforce.



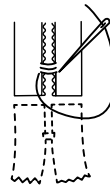
19. Pin the remaining half of the zipper to the **LEFT** side of the zipper opening in same manner. Make sure the upper and lower edges of the garment are even. Hand-baste along the center of the tape. Position zipper foot at the top of the zipper with **LEFT** groove over the coil. Stitch along tape to the notch. Back-stitch to reinforce.



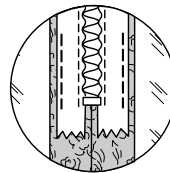
20. Close zipper and check that it is invisible from the **OUTSIDE**. Pull the free ends of the zipper tape away from the seam allowance. Pin remaining center back seam together below zipper. Position zipper foot all the way to the **LEFT** so the needle goes down through the outer notch of the foot. Start stitching seam 1/4"(6mm) above lowest stitch and slightly to the **LEFT**. Stitch remainder of seam.



21. If the zipper is longer than the opening, using a strong thread, hand-sew a few small stitches across ends of coils at end of opening. Trim away lower end of zipper tape to within 5/8"(1.5cm) of hand-stitches.

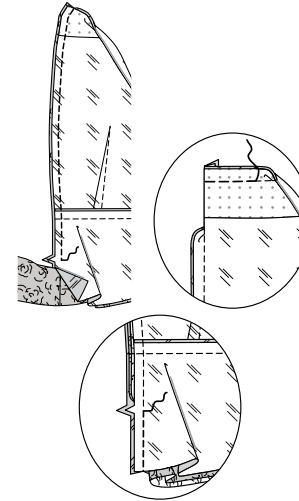


22. If you prefer, open out each seam allowance at end of zipper and stitch tape to seam allowance.

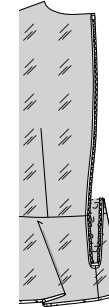


23. Open out back opening edges of top, rolling the zipper teeth away from the opening edge. Turn back lining to **OUTSIDE**. With **RIGHT** sides together, pin back and back neck edges of top and lining together. Stitch across lining 1/2"(1.3cm) from back edges, keeping zipper teeth free. Stitch remaining back neck edges, connecting to previous stitching. Trim neck seam. Trim corner. Do not trim center back edges.

Stitch center back edges of peplum lining below notch.

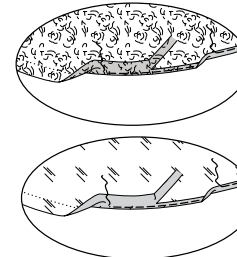


24. Turn lining to **INSIDE**. Press.

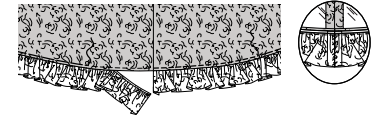


FINISHING

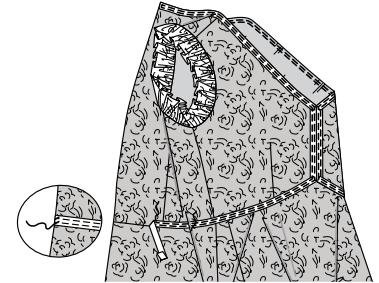
25. Make a **DESIGNER/BABY NARROW HEM** on lower edge of peplum and peplum lining.



26. Lap finished edge of peplum over bound edge of pre-gathered lace, turning under 1/2"(1.3cm) on ends of lace at center back seam. Baste. Stitch along previous hem stitching. **SLIPSTITCH** ends of lace.



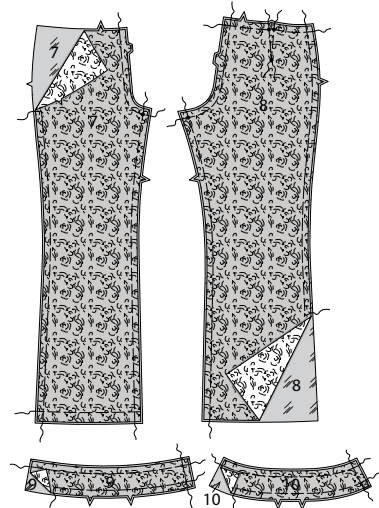
27. Turn under 1/2"(1.3cm) on end of flexible trim. Starting at center back, pin trim to top with one long edge just over finished neck edge and trim extending past finished edge. At center front, fold trim and continue along center front placing trim along seam. Fold at peplum seam and continue placing trim along top with edge of trim along waist seam, turning under 1/2"(1.3cm) on ends at center back. Stitch close to long edges of trim. **SLIPSTITCH** ends.



PANTS B

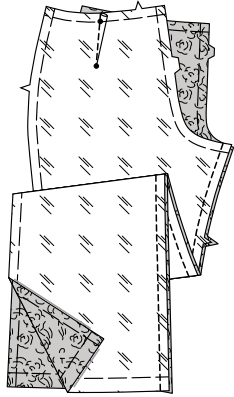
UNDERLINING

1. To underline, pin **WRONG** side of each **FRONT** (7), **BACK** (8), **FRONT WAISTBAND** (9), and **BACK WAISTBAND** (10) section to **RIGHT** side of matching **LINING** sections. Baste through all symbols and all lines of construction, as shown, leaving both ends of thread free for easy removal. Remaining front and back waistband lining sections will be used as lining.

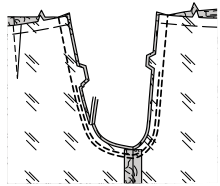


BACK AND FRONT

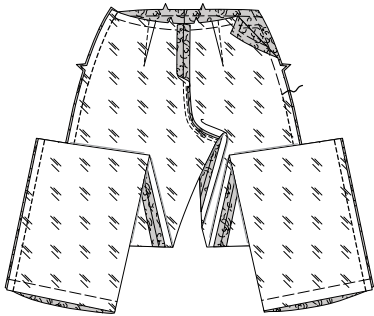
2. Stitch dart in back. Stitch back to front at inner leg, stretching back to fit.



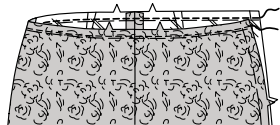
3. Stitch center seam, matching inner leg seams and notches. Stitch again 1/4" (6mm) away in seam allowances between notches. Trim close to second stitching.



4. Stitch back to front at RIGHT side seam. Stitch LEFT side seam from lower edge to within 3" (7.5cm) of notch, back-stitching to reinforce seam.

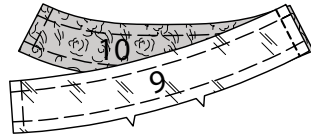


5. STAYSTITCH upper edge.

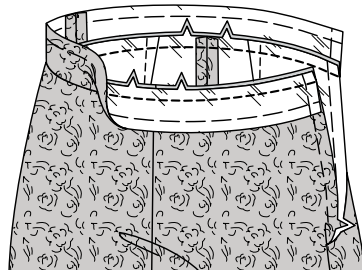


WAISTBAND AND INVISIBLE ZIPPER

6. Stitch front waistband to back waistband at RIGHT side seam.

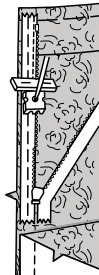


7. Pin waistband to upper edge of pants matching centers, notches, and RIGHT side seam. Stitch. Trim. Press seam toward waistband.

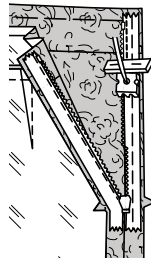


NOTE: Stitch the invisible zipper using an invisible zipper foot. If the zipper is longer than the zipper opening, adjust after the zipper is inserted.

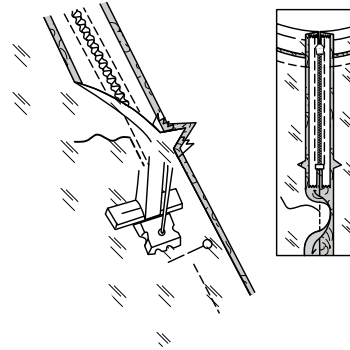
8. Open the zipper and press the tape using a cool iron. On OUTSIDE, pin RIGHT side of the zipper face down on the RIGHT side of the zipper opening. Have the coil along the seam line, the tape within the seam allowance and the top stop 3/4" (2cm) below upper edge, as shown. Hand-baste along center of the tape. Position zipper foot at the top of the zipper with RIGHT groove of the foot over coil. Stitch along tape to the notch. Back-stitch to reinforce.



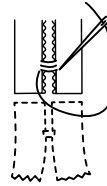
9. Pin the remaining half of the zipper to the LEFT side of the zipper opening in same manner. Make sure the upper and lower edges of the garment are even. Hand-baste along the center of the tape. Position zipper foot at the top of the zipper with LEFT groove over the coil. Stitch along tape to the notch. Back-stitch to reinforce.



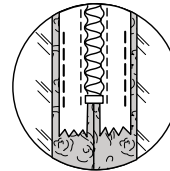
10. Close zipper and check that it is invisible from the OUTSIDE. Pull the free ends of the zipper tape away from the seam allowance. Pin remaining LEFT side seam together below zipper. Position zipper foot all the way to your LEFT so the needle goes down through the outer notch of the foot. Start stitching seam 1/4" (6mm) above lowest stitch and slightly to the LEFT. Stitch remainder of seam, connecting to previous stitching.



11. If the zipper is longer than the opening, using a strong thread, hand-sew a few small stitches across ends of coils at end of opening. Trim away lower end of zipper tape to within 5/8" (1.5cm) of hand-stitches.

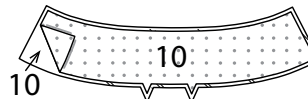
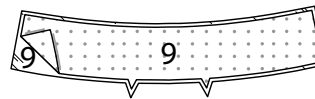


12. If you prefer, open out each seam allowance at end of zipper and stitch tape to seam allowance.

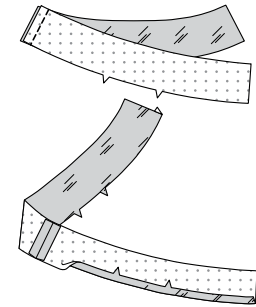


FINISHING

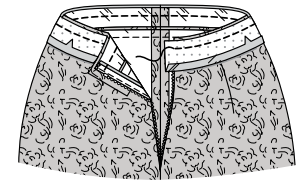
13. Fuse INTERFACING to WRONG side of front waistband LINING and back waistband LINING sections.



14. Stitch front waistband LINING to back waistband LINING at RIGHT side seam. Turn under 1/2" (1.3cm) on notched edge. Press.

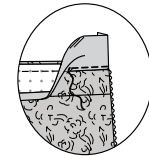


15. With RIGHT sides together, pin lining to waistband, matching centers, and RIGHT side seam. Stitch upper edge. Trim.



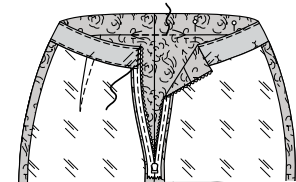
16. UNDERSTITCH lining as far as possible.

Turn in seam allowances on opening edges of lining. Press.

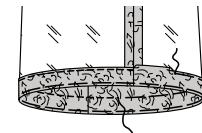


17. Turn lining to INSIDE, press. On INSIDE, pin pressed edge of lining over seam, placing pins on OUTSIDE. (Finished edge of lining extends below seam.) On OUTSIDE, stitch in the ditch or groove of waistband seam between zipper, catching linings on INSIDE.

SLIPSTITCH ends of lining to zipper tape, clearing zipper teeth.



18. Turn up hem. Baste close to fold. Trim hem to an even width. Turn under 1/4" (6mm) on raw edge; press. Baste close to upper pressed edge. TOPSTITCH hem in place along upper basting, as shown.





Congrats!

You've completed your sewing adventure

SHARE YOUR LOOK



Post your pattern and tag us
[@simplicity_creative_group](#) and [#knowMepatterns](#)
for a chance to be featured on our social media.

Look for more PDF patterns at [simplicity.com](https://www.simplicity.com)

Have a question or need help with your sewing project call us at
1-800-782-0323

