



LYDIA NAOMI
knowME[™]
BY MIMI G

ME2091



B



A

Scan QR code
for a Sew-Along
video tutorial.



@Lydianaomistudio



Designed and
printed in USA

Average										
MISSSES' DRESS WITH SLEEVE VARIATIONS										
Suggested Fabrics: Cotton Blends, Crepe, Linen Blends, Satin, Silky Types. Interfacing: Lightweight Fusible.										
Notions: A,B: One 14" (36cm) invisible zipper.										
Sizes	8	10	12	14	16	18	20	22	24	26
European	34	36	38	40	42	44	46	48	50	52
BODY MEASUREMENTS: Select pattern size based on body measurements										
Bust	31½	32½	34	36	38	40	42	44	46	48 Ins.
Waist	24	25	26½	28	30	32	34	37	39	41 "
Hip-9" below waist	33½	34½	36	38	40	42	44	46	48	50 "
Back-neck to waist	15¾	16	16¼	16½	16¾	17	17¼	17½	17¾	18 "
Interfacing A,B - 20" - ½yd.										
Dress A	45**	3%	3%	3½	3½	3%	4	4	4	4½ Yds.
	60**	2%	2%	2¼	2¼	2¼	2½	3	3½	3½ "
Dress B	45**	2¾	2¾	2¾	2¾	2¾	2¾	3	3¾	3¾ Yds.
	60**	2½	2½	2¼	2¼	2¼	2¼	2¾	2¾	2¾ "
FINISHED GARMENT MEASUREMENTS (Includes Design and Wearing Ease)										
A,B Bust	34	35	36½	38½	40½	42½	44½	46½	48½	50½ Ins.
A,B Waist	26½	27½	29	31	33	35	37	39	41	43 "
Finished back length from base of neck										
Dress A,B	34¾	35	35¼	35½	35¾	36	36¼	36½	36¾	37 Ins.
*with nap **without nap										

Moins Facile

ROBE AVEC VARIATIONS DE MANCHES POUR JEUNES FEMMES

Tissus Conseillés: Cotonnades, Crepe, Lin mélangés, Satin, Types soie. Entoilage: Thermocollant léger.

Mercerie: A, B: 1 fermeture à glissière invisible de 36cm.

Tailles	8	10	12	14	16	18	20	22	24	26	
Françaises	36	38	40	42	44	46	48	50	52	54	
Européen	34	36	38	40	42	44	46	48	50	52	

MESURES DU CORPS: Choisissez la taille du patron basée sur les mesures du corps

Poitrine	80	83	87	92	97	102	107	112	117	122	cm
Taille	61	64	67	71	76	81	87	94	99	104	"

Hanches (23cm au-dessous de la taille)

	85	88	92	97	102	107	112	117	122	127	cm
--	----	----	----	----	-----	-----	-----	-----	-----	-----	----

Dos du cou à la taille

	40	40.5	41.5	42	42.5	43	44	44.5	45	46	"
--	----	------	------	----	------	----	----	------	----	----	---

Entoilage A, B - 51cm - 0.5m

Robe A	115cm*	3.1	3.1	3.2	3.2	3.3	3.7	3.7	3.7	3.7	3.8	m
	150cm*	2.4	2.4	2.5	2.5	2.5	2.6	2.7	2.7	2.9	2.9	"
Robe B	115cm*	2.4	2.5	2.5	2.5	2.5	2.6	2.6	3.3	3.4	3.4	m
	150cm*	1.9	1.9	1.9	2.1	2.1	2.1	2.1	2.2	2.3	2.3	"

MESURES DES VÊTEMENTS FINI (Motif et aisance de port compris)

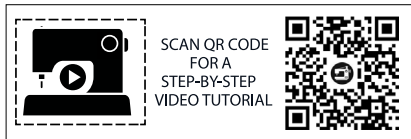
A, B Poitrine	86	89	93	98	103	108	113	118	123	128	cm
A, B Taille	67	70	74	79	84	89	94	99	104	109	"

Longueur finie – dos, votre nuque à l'ourlet

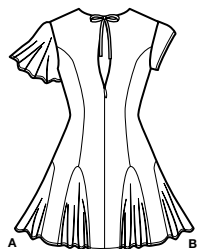
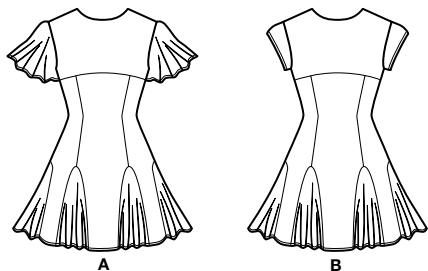
Robe A, B	88	89	90	90	91	91	92	93	93	94	cm
-----------	----	----	----	----	----	----	----	----	----	----	----

*avec sens **sans sens

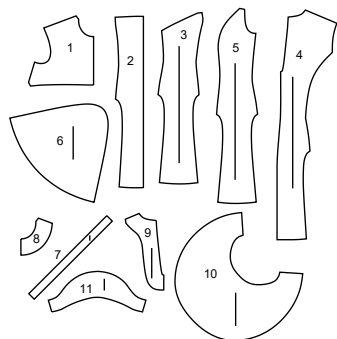




@Lydianaomistudio



11 PATTERN PIECES



- 1 Bodice Front-A,B
- 2 Front-A,B
- 3 Side Front-A,B
- 4 Back-A,B
- 5 Side Back-A,B
- 6 Godet-A,B
- 7 Tie End-A,B
- 8 Front Facing-A,B
- 9 Back Facing-A,B
- 10 Sleeve-A
- 11 Sleeve-B

PATTERN MARKINGS

GRAINLINE: Place on straight grain of fabric, parallel to selvage or fold.

FOLDLINE: Place line on fold of fabric.

BUTTONHOLE MARKING: Indicates exact length and placement of buttonholes.

BUTTON MARKING: Indicates button placement.

NOTCHES AND SYMBOLS: For matching seams and construction details.

Indicates the Bustline, Waistline, Hip and/or Biceps. Measurements refer to circumference of Finished Garment (Body Measurement + Wearing Ease + Design Ease). Adjust pattern if necessary. The measurement excludes pleats, tucks, darts and seam allowances.

SEAM ALLOWANCE: 5/8" (1.5cm) included unless otherwise indicated, but not printed on tissue.

ADJUST IF NECESSARY

Lengthen or Shorten at adjustment lines (==) or where indicated on pattern. If substantial length is added, you may need to purchase additional fabric.

TO SHORTEN: Crease along adjustment line. Make a fold half the amount needed. Tape in place.

TO LENGTHEN: Slash between adjustment lines. Spread amount as needed, keeping edges parallel. Tape over paper.

When Alteration lines are not on tissue, lengthen or shorten at lower edge.

CUTTING AND MARKING

★ Cut other pieces first, allowing enough fabric to cut this piece. Open fabric. For "Cut 1" pieces, cut piece once on single layer of fabric with piece face up on right side of fabric.

Pattern may have cutting lines for several sizes. Select the proper cutting line or pattern pieces for your size.

Before **CUTTING** place all pieces on fabric according to layout. Pin. (Layouts show approximate position of pattern pieces; position may vary according to your pattern size.) Cut **ACCURATELY**, cutting notches outward.

Before removing pattern, **TRANSFER MARKINGS** and lines of construction to Wrong Side of fabric, using the Pin and Chalk Pencil method or Tracing Paper and Dressmaker Wheel. Markings needed on right side of fabric should be thread traced.

NOTE: Broken-line boxes (a| b| c|) in layouts represent pieces cut by measurements provided.

SHRINK FABRIC if not labeled pre-shrunk. Press.

CIRCLE LAYOUT for View, Size, Fabric Width.

Use **WITH NAP** layout for fabrics with one-way designs, nap, pile or surface shading. Because most knits have surface shading, a with nap layout is used.

For **DOUBLE THICKNESS (WITH FOLD)** - fold fabric with right sides together.

★ **DOUBLE THICKNESS (WITHOUT FOLD)** - For fabrics with nap, fold fabric crosswise, right sides together. Mark as shown. Cut along crosswise fold of fabric (A). Turn upper layer 180° so arrows go in same direction and place over lower layer, right sides together (B).

For **SINGLE THICKNESS** - place fabric right side up. (For Fur Pile fabrics, place pile side down.)

DOUBLE THICKNESS (WITH FOLD)

DOUBLE THICKNESS (WITHOUT FOLD)

CUTTING LAYOUTS

INTERFACING A, B

USE PIECES: 8 9

20" (51 CM)
ALL SIZES

DRESS A

USE PIECES: 1 2 3 4 5 6 7 8 9 10

45" (115 CM)
WITH NAP
SIZES 8 10 12 14 16

45" (115 CM)
WITH NAP
SIZES 18 20 22
24 26

60" (150 CM)
WITH NAP
ALL SIZES

DRESS B

USE PIECES: 1 2 3 4 5 6 7 8 9 11

45" (115 CM)
WITH NAP
SIZES 8 10 12 14 16 18 20

45" (115 CM)
WITH NAP
SIZES 22 24 26

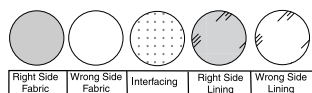
60" (150 CM)
WITH NAP
SIZES 8 10 12 14 16 18 20

60" (150 CM)
WITH NAP
SIZES 22 24 26

© 2024 KnowMe® an IG Design Group Americas, Inc. brand.
All Rights Reserved. Printed in U.S.A.

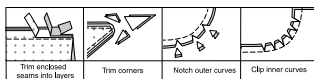
SEWING INFORMATION

FABRIC KEY



SEAM ALLOWANCES

Use 5/8" (1.5cm) seam allowances unless otherwise indicated.



PIN AND FIT

Pin or baste seams, **RIGHT SIDE TOGETHER**, matching notches. Fit garment before stitching major seams.

PRESS

Press seam allowances flat; then open unless otherwise stated. Clip where necessary so they lie flat.

GLOSSARY

Sewing terms appearing in **BOLD TYPE** in Sewing Instructions are explained below.

EASESTITCH - Stitch along seamline, using long machine stitches. Pull thread ends when adjusting to fit.

NOTE: For sleeve caps, make a second row of long machine stitches 1/4" (6mm) away in seam allowance. for more control.

FINISH - Stitch 1/4" (6mm) from raw edge and finish with one of the following: (1) Pink OR (2) Overcast OR (3) Turn in along stitching and stitch close to fold OR (4) Overlock.

OPTIONAL FOR HEMS: Apply Seam Binding.

SLIPSTITCH - Slide needle through a folded edge, then pick up a thread of underneath fabric.

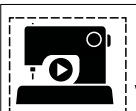
STAYSTITCH - Stitch 1/2" (1.3cm) from cut edge in direction of arrows. This stitching stays in permanently to prevent stretching on curved edges. (Shown only in the first illustration.)

UNDERSTITCH - Press facing and seam away from garment, stitching through facing and seam allowances close to seam.

PATTERN PIECES WILL BE IDENTIFIED BY NUMBERS THE FIRST TIME THEY ARE USED.

STITCH 5/8" (1.5CM) SEAMS WITH RIGHT SIDES TOGETHER UNLESS OTHERWISE STATED.

NOTE: Under each sub-heading, the first view will be illustrated, unless otherwise illustrated.



SCAN QR CODE
FOR A
STEP-BY-STEP
VIDEO TUTORIAL



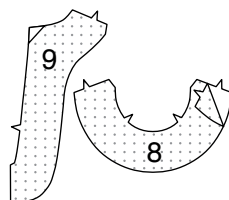
@Lydianaomistudio

SEWING DIRECTIONS

DRESS A, B

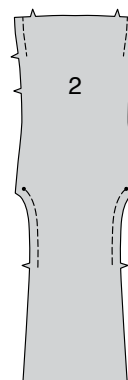
INTERFACING

1. Trim corners of **INTERFACING**, as shown. Fuse interfacing to wrong side of each matching **FABRIC** section, following manufacturer's instructions.

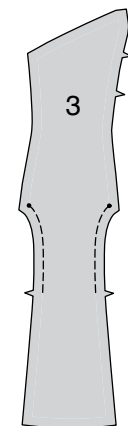


FRONT, SIDE FRONT

2. **STAYSTITCH** side edges of **FRONT** (2), from upper edge to upper notch and curved edges between dot and lower notch.



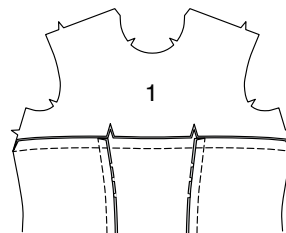
3. **STAYSTITCH** side curved edges of **SIDE FRONT** (3) between dot and lower notch.



4. With **RIGHT** sides together, pin each side front to front at side front seams, matching dots, clipping front where necessary. Stitch from upper edge to dots. Press seams toward center.

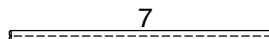


5. Pin lower edge of **BODICE FRONT** (1) to upper edge of front/side front, **RIGHT** sides together, matching centers. Stitch. Press seams toward bodice.

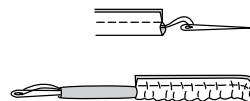


BACK, SIDE BACK

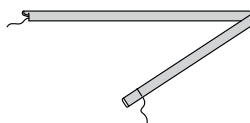
6. Fold **TIE END** (7) in half lengthwise, with **RIGHT** sides together. Stitch long edge in 1/4" (6mm) seam.



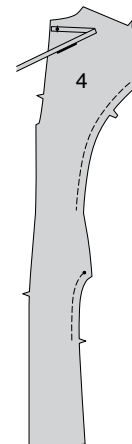
7. Turn tie end **RIGHT** side out. To turn, fasten a heavy thread securely to one end. Push needle (eye first) through strip; press.



8. Tuck in raw edges on one end of tie end. **SLIPSTITCH**. Baste raw edges together.



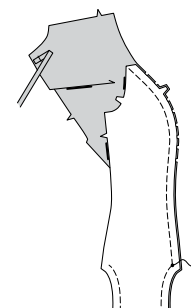
9. On outside, pin tie end to **BACK** (4), centering over upper dot, having raw edges even; baste. **STAYSTITCH** side curved edge of back above waist edge and between dot and single notch.



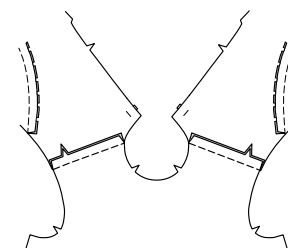
10. **STAYSTITCH** side curved edges of **SIDE BACK** (5) between dot and single notch.



11. With **RIGHT** sides together, pin each side back to back at side back seam, matching dots, clipping back where necessary. Stitch from upper edge to dots. Press seams toward back.



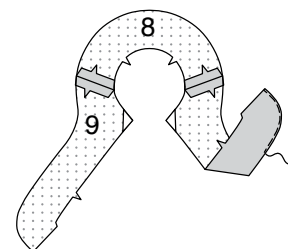
12. Stitch back to front at shoulders.



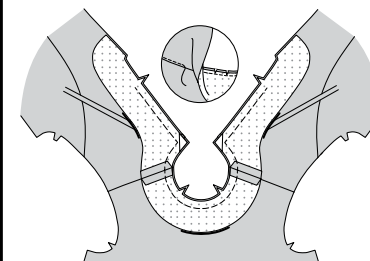
FACINGS

13. Stitch **FRONT FACING** (8) to each **BACK FACING** (9) at shoulders.

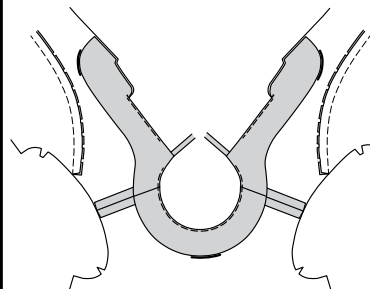
FINISH long unnotched edge of facing.



14. Pin facing to front neck and back edges, **RIGHT** sides together, matching notches, centers and seams. Stitch, ending stitching at notch on back edge; trim seams.



15. **UNDERSTITCH** facing neck and back edges as far as possible. Turn facing to inside, turning tie ends out; press.



ZIPPER AND SIDE SEAMS

16. Open the zipper and press the tape flat.

A. Keep the free lower edges of back facing out of the way. On OUTSIDE, pin RIGHT side of the zipper face down on the RIGHT side of the zipper opening. Have the coil along the seam line, the tape within the seam allowance and the top stop 1/8" (3mm) below curve edge, as shown. Hand-baste along center of tape. Position zipper foot over coil. Stitch along tape to notch. Back-stitch to reinforce.

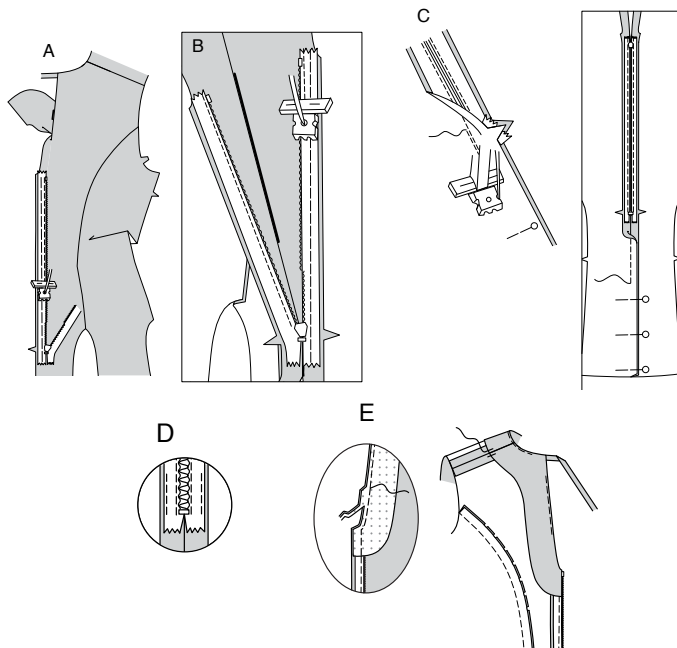
B. Pin the remaining half of the zipper to the LEFT side of the zipper opening in the same manner. Hand-baste along the center of tape. Position zipper foot at the top of the zipper with LEFT groove over the coil. Stitch along tape to the notch. Back-stitch to reinforce.

C. Close zipper and check that it is invisible from the OUTSIDE. Pull the free ends of the zipper tape away from the seam allowance. Pin remaining center back seam together below zipper. Position zipper foot all the way to the LEFT so the needle goes down through the outer notch of the foot. Start stitching seam 1/4" (6mm) above the lowest stitch and slightly to the LEFT. Stitch for about 3" (8cm). Stitch remainder of seam to edge using a regular presser foot.

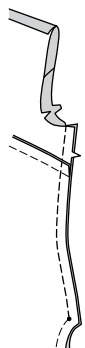
D. If you prefer, open out each seam allowance at end of zipper and stitch tape to seam allowance.

E. Open out back opening edges of dress, rolling the zipper teeth away from the opening edge. Turn back facing to OUTSIDE. With RIGHT sides together, pin back edges of dress and facing together. Stitch remaining back edges of dress, connecting to previous stitching. Trim seam above zipper. Do not trim center back edges.

Turn back facing to INSIDE again; press. Tack facing to shoulder seams.

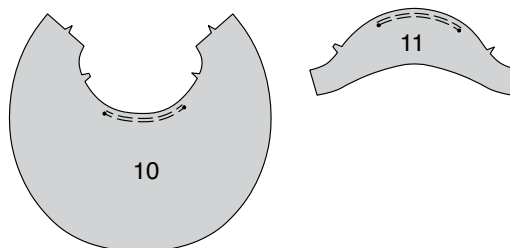


17. With RIGHT sides together, pin side back sections to side front sections at side seams, matching dots. Stitch from upper edge to dot.

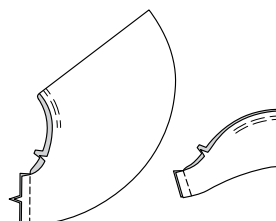


SLEEVE

18. EASESTITCH cap of SLEEVE (10) or (11) between outer dots.

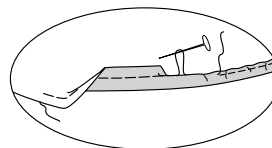


19. Stitch sleeve seam.

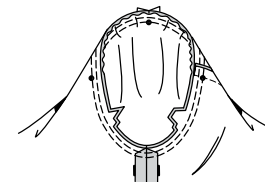


20. Stitch 1/4" (6mm) from lower edge of sleeve using long machine stitches, as shown.

Turn up a 5/8" (1.5cm) hem at lower edge of sleeve, turning under 1/4" (6mm) on raw edge. Pull thread to ease in fullness; stitch.



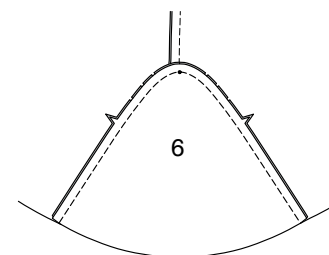
21. With RIGHT sides together, pin sleeve into armhole with center small dot at shoulder seam, matching underarm seams, notches and remaining small dots. Adjust ease; baste. Stitch. Stitch again 1/4" (6mm) away in seam allowance. Trim close to second stitching. Turn seam allowances toward sleeve.



GODETS

22. With RIGHT sides together, pin one GODET (6) section to front at each side front, matching notches and dots, clipping dress where necessary. Stitch, pivoting at dot. Press seams toward dress.

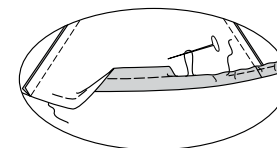
Stitch remaining godet sections to back at side backs and side seams in the same manner as for front.



HEM

23. Stitch 1/4" (6mm) from lower edge of dress using long machine stitches, as shown.

Turn up a 5/8" (1.5cm) hem at lower edge of dress, turning under 1/4" (6mm) on raw edge. Pull thread to ease in fullness; stitch.





Congrats!

You've completed your sewing adventure

SHARE YOUR LOOK



Post your pattern and tag us
[@simplicity_creative_group](#) and [#knowMepatterns](#)
for a chance to be featured on our social media.

Look for more PDF patterns at [simplicity.com](https://www.simplicity.com)

Have a question or need help with your sewing project call us at
1-800-782-0323



KnowMe ©2023 a division of IG Design Group Americas Inc. • Atlanta, GA 30342 USA www.thedesigngroup.com • All Rights Reserved. www.mccall.com • Made in the U.S.A. Fabriqué aux États-Unis.
To be used for individual private home use only and not for commercial or manufacturing purposes. • A usage privé seulement et non à des fins commerciales ou de production en série. • Para uso privado solamente, no se puede utilizar con propósitos de comercialización o de producción en serie.