



BRITTANY J. JONES
knowME
BY **mimi g**

ME2089

Scan QR code for a Sew-Along video tutorial.

@brittanyjones

Designed and printed in USA

Average

MISSES' JACKETS

Suggested Fabrics: Broadcloth, Cotton Blends, Denim, Gabardine, Linen Blends, Microsuede, Stretch Wovens, Twill, Wool Blends. **Interfacing:** Lightweight Fusible.

Notions: **A, B:** One prong buckle with a 1 5/8" (4cm) opening. **Also for A:** Seven 3/4" (2cm) buttons, eleven grommets with a 1/4" (6mm) opening, two prong buckles with a 1 1/2" (4cm) opening. **Also for B:** Eight 3/4" (2cm) buttons, five grommets with a 1/4" (6mm) opening.

Sizes	10	12	14	16	18	20	22	24	26
European	36	38	40	42	44	46	48	50	52

BODY MEASUREMENTS: Select pattern size based on body measurements

Bust	32 1/2	34	36	38	40	42	44	46	48	Ins.
Waist	25	26 1/2	28	30	32	34	37	39	41	"
Hip-9" below waist	34 1/2	36	38	40	42	44	46	48	50	"
Back-neck to waist	16	16 1/4	16 1/2	16 3/4	17	17 1/4	17 1/2	17 3/4	18	"

Jacket A	45**	2%	2%	2 3/4	2 3/4	2 3/4	2 3/4	2 3/4	3	3%	Yds.
	60**	1%	1%	1%	2 1/4	2 1/4	2 1/4	2 1/4	2 1/4	2%	"

Interfacing	20"	1%	1%	2	2	2	2	2 1/2	2 1/2	2%	"
--------------------	-----	----	----	---	---	---	---	-------	-------	----	---

Jacket B	45**	2 3/4	2 3/4	2 3/4	2 3/4	3 1/4	3 1/4	3 3/4	3 3/4	3%	Yds.
	60**	2 1/4	2 1/4	2 3/4	2 3/4	2 3/4	2 1/2	2 1/2	2 5/8	2%	"

Interfacing	20"	2	2	2	2 1/2	2 1/2	2 1/2	2 1/2	2 1/4	2%	"
--------------------	-----	---	---	---	-------	-------	-------	-------	-------	----	---

FINISHED GARMENT MEASUREMENTS (Includes Design and Wearing Ease)

A, B Bust	41	42 1/2	44 1/2	46 1/2	48 1/2	50 1/2	52 1/2	54 1/2	56 1/2	Ins.
------------------	----	--------	--------	--------	--------	--------	--------	--------	--------	------

A, B Waist	41	42 1/2	44 1/2	46 1/2	48 1/2	50 1/2	52 1/2	54 1/2	56 1/2	"
-------------------	----	--------	--------	--------	--------	--------	--------	--------	--------	---

Width, lower edge										
Jacket A, B	41	41 1/4	41 1/2	41 3/4	42	42 1/4	42 1/2	42 3/4	43	Ins.

Finished back length from base of neck

Jacket A, B	18 1/2	20	22	24	26	28	30	32	34	Ins.
--------------------	--------	----	----	----	----	----	----	----	----	------

*with nap **without nap

Moins Facile

VESTES POUR JEUNES FEMMES

Tissus Conseillés: Broadcloth, Cotonnades, Denim, Gabardine, Lin mélangés, Micro-suédine, Tissus tissés extensibles, Twill, Lainages. **Entoilage:** Thermocollant léger.

Mercerie: **A, B:** 1 boucle ardillon avec ouverture de 4cm. **Aussi pour A:** 7 boutons de 2cm, 11 œillets avec ouverture de 6mm, 2 boucles ardillon avec ouverture de 4cm. **Aussi pour B:** 8 boutons de 2cm, 5 œillets avec ouverture de 6mm.

Tailles	10	12	14	16	18	20	22	24	26
Françaises	38	40	42	44	46	48	50	52	54
Européen	36	38	40	42	44	46	48	50	52

MESURES DU CORPS: Choisissez la taille du patron basée sur les mesures du corps

Poitrine	83	87	92	97	102	107	112	117	122	cm
-----------------	----	----	----	----	-----	-----	-----	-----	-----	----

Taille	64	67	71	76	81	87	94	99	104	"
---------------	----	----	----	----	----	----	----	----	-----	---

Hanches (23cm au-dessous de la taille)

	88	92	97	102	107	112	117	122	127	cm
--	----	----	----	-----	-----	-----	-----	-----	-----	----

Dos du cou à la taille	40.5	41.5	42	42.5	43	44	44.5	45	46	"
-------------------------------	------	------	----	------	----	----	------	----	----	---

Veste A	115cm*	2.3	2.4	2.5	2.5	2.5	2.6	2.6	2.9	m
	150cm*	1.7	1.7	1.7	2.1	2.1	2.1	2.1	2.2	"

Entoilage	51cm	1.7	1.7	1.8	1.8	1.8	1.8	1.9	1.9	"
------------------	------	-----	-----	-----	-----	-----	-----	-----	-----	---

Veste B	115cm*	2.4	2.5	2.5	2.5	3.0	3.0	3.1	3.1	m
	150cm*	2.1	2.1	2.1	2.2	2.2	2.3	2.3	2.4	"

Entoilage	51cm	1.8	1.8	1.8	1.9	1.9	1.9	1.9	2.1	"
------------------	------	-----	-----	-----	-----	-----	-----	-----	-----	---

MESURES DES VÊTEMENTS FINI (Motif et aisance de port compris)

A, B Poitrine	104	108	113	118	123	128	133	138	144	cm
----------------------	-----	-----	-----	-----	-----	-----	-----	-----	-----	----

A, B Taille	104	108	113	118	123	128	133	138	144	"
--------------------	-----	-----	-----	-----	-----	-----	-----	-----	-----	---

Largeur à l'ourlet

Veste A, B	104	105	105	106	107	107	108	109	109	cm
-------------------	-----	-----	-----	-----	-----	-----	-----	-----	-----	----

Longueur finie – dos, votre nuque à l'ourlet

Veste A, B	47	51	56	61	66	71	76	81	86	cm
-------------------	----	----	----	----	----	----	----	----	----	----

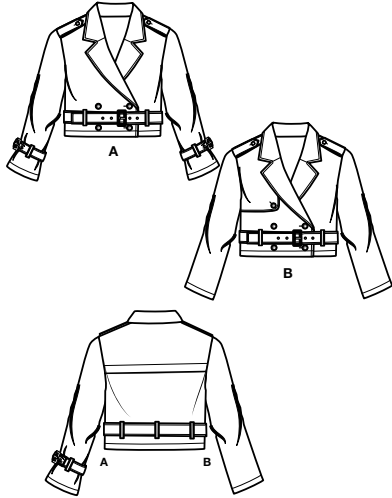
*avec sens **sans sens



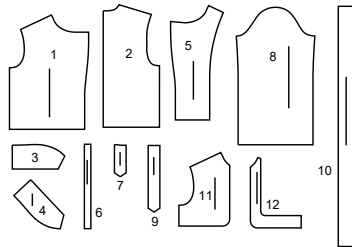


SCAN QR CODE
FOR A
STEP-BY-STEP
VIDEO TUTORIAL

@brittanyjones



12 PATTERN PIECES



- 1 Front-A,B
- 2 Back-A,B
- 3 Upper Collar-A,B
- 4 Under Collar-A,B
- 5 Front Facing-A,B
- 6 Carrier-A,B
- 7 Epaulet-A,B
- 8 Sleeve-A,B
- 9 Sleeve Tab-A
- 10 Belt-A,B
- 11 Front Overlay-B
- 12 Front Overlay Facing-B

PATTERN MARKINGS

GRAINLINE: Place on straight grain of fabric, parallel to selvage or fold.
FOLDLINE: Place line on fold of fabric.
BUTTONHOLE MARKING: Indicates exact length and placement of buttonholes.
BUTTON MARKING: Indicates button placement.
NOTCHES AND SYMBOLS: For matching seams and construction details.
 Indicates the Bustline, Waistline, Hip and/or Biceps. Measurements refer to circumference of Finished Garment (Body Measurement + Wearing Ease + Design Ease). Adjust pattern if necessary. The measurement excludes pleats, tucks, darts and seam allowances.
SEAM ALLOWANCE: 5/8" (1.5cm) included unless otherwise indicated, but not printed on tissue.

ADJUST IF NECESSARY

Lengthen or Shorten at adjustment lines (==) or where indicated on pattern. If substantial length is added, you may need to purchase additional fabric.
TO SHORTEN: Crease along adjustment line. Make a fold half the amount needed. Tape in place.
TO LENGTHEN: Slash between adjustment lines. Spread amount as needed, keeping edges parallel. Tape over paper.
 When Alteration lines are not on tissue, lengthen or shorten at lower edge.

CUTTING AND MARKING

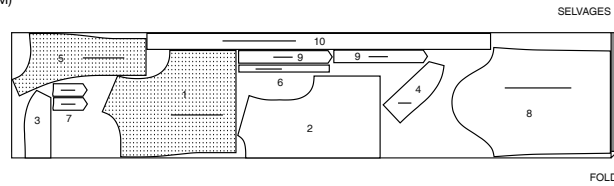
SHRINK FABRIC if not labeled pre-shrunk. Press.
CIRCLE LAYOUT for View, Size, Fabric Width.
 Use **WITH NAP** layout for fabrics with one-way designs, nap, pile or surface shading. Because most knits have surface shading, a with nap layout is used.
 For **DOUBLE THICKNESS (WITH FOLD)** - fold fabric with right sides together.
***DOUBLE THICKNESS (WITHOUT FOLD)** - For fabrics with nap, fold fabric crosswise, right sides together. Mark as shown. Cut along crosswise fold of fabric (A). Turn upper layer 180° so arrows go in same direction and place over lower layer, right sides together (B).
 For **SINGLE THICKNESS** - place fabric right side up. (For Fur Pile fabrics, place pile side down.)
NOTE: Broken-line boxes (a| b| c|) in layouts represent pieces cut by measurements provided.

CUTTING LAYOUTS

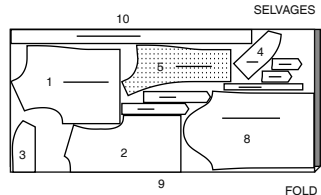
JACKET A

USE PIECES: 1 2 3 4 5 6 7 8 9 10

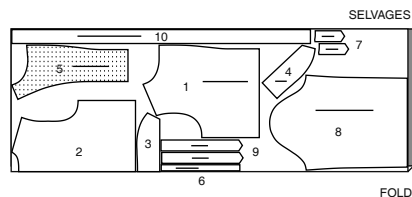
45" (115 CM)
WITH NAP
ALL SIZES



60" (150 CM)
WITH NAP
SIZES 10 12 14



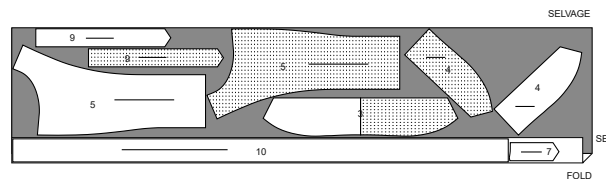
60" (150 CM)
WITH NAP
SIZES 16 18 20 22 24 26



INTERFACING A

USE PIECES: 3 4 5 7 9 10

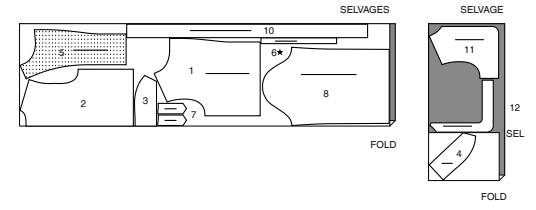
20" (51 CM)
ALL SIZES



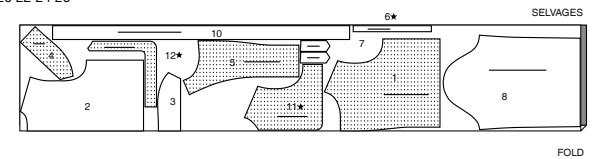
JACKET B

USE PIECES: 1 2 3 4 5 6 7 8 10 11 12

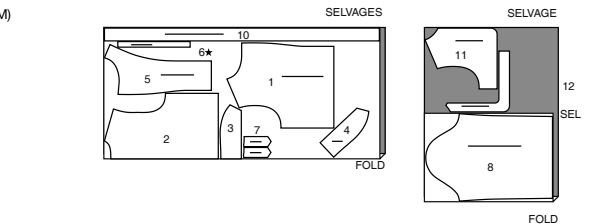
45" (115 CM)
WITH NAP
SIZES 10 12 14 16



45" (115 CM)
WITH NAP
SIZES 18 20 22 24 26



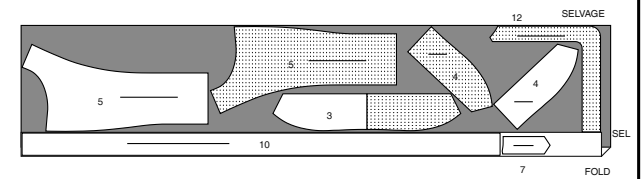
60" (150 CM)
WITH NAP
ALL SIZES



INTERFACING B

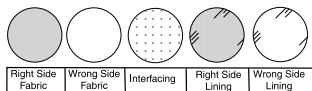
USE PIECES: 3 4 5 7 10 12

20" (51 CM)
ALL SIZES



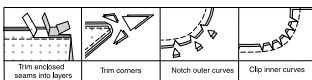
SEWING INFORMATION

FABRIC KEY



SEAM ALLOWANCES

Use 5/8" (1.5cm) seam allowances unless otherwise indicated.



PIN AND FIT

Pin or baste seams, **RIGHT SIDE TOGETHER**, matching notches. Fit garment before stitching major seams.

PRESS

Press seam allowances flat; then open unless otherwise stated. Clip where necessary so they lie flat.

GLOSSARY

Sewing methods shown in **BOLD** are defined below:

EASE – Loosen needle tension slightly. With **RIGHT** side up, stitch 5/8" (1.5cm) from cut edge using a long stitch. Stitch again 1/4" (6mm) from the first stitching within the seam allowance.

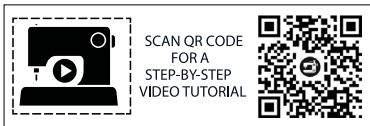
EDGE FINISH – Stitch 1/4" (6mm) from edge, turn under edge along stitching and stitch; or zig-zag stitch; or overlock raw edges.

STAYSTITCH – Stitch 1/2" (1.3cm) from cut edge in direction of arrows. This stitching stays in permanently to prevent stretching on curved edges. (Shown only in the first illustration.)

TOPSTITCH – On **OUTSIDE**, stitch 1/4" (6mm) from edge, seam or previous stitching, using presser foot as guide, or stitch as indicated in instructions.

PATTERN PIECES WILL BE IDENTIFIED BY NUMBERS THE FIRST TIME THEY ARE USED.

STITCH 5/8" (1.5CM) SEAMS WITH RIGHT SIDES TOGETHER UNLESS OTHERWISE STATED.



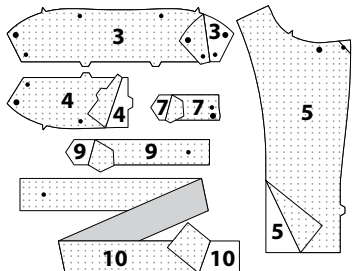
@brittanyjones

SEWING DIRECTIONS

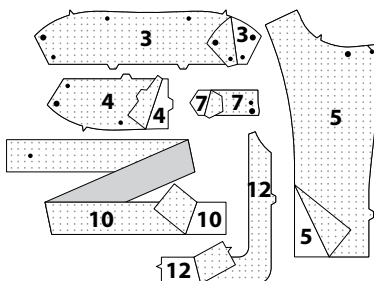
JACKET A, B

INTERFACING

1. FOR VIEW A – Pin interfacing to **WRONG** side of **UPPER COLLAR (3)**, **UNDER COLLAR (4)**, **FRONT FACING (5)**, **EPAULET (7)**, **SLEEVE TAB (9)**, and **BELT (10)**. Fuse interfacing in place following manufacturer's directions.

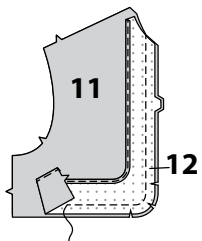


2. FOR VIEW B – Pin interfacing to **WRONG** side of **UPPER COLLAR (3)**, **UNDER COLLAR (4)**, **FRONT FACING (5)**, **EPAULET (7)**, **BELT (10)**, and **FRONT OVERLAY FACING (12)**. Fuse interfacing in place following manufacturer's directions.

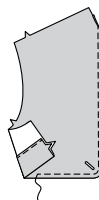


FRONT OVERLAY B

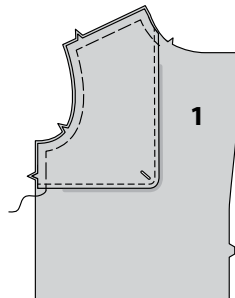
3. EDGE FINISH unmarked long edge of **FRONT OVERLAY FACING (12)**. With **RIGHT** sides together and raw edges even, pin facing to **FRONT OVERLAY (11)**, matching notches. Stitch notched edge. Trim seam and clip curves.



4. Turn facing to **INSIDE**; press. **TOPSTITCH** finished edge. Make buttonhole at marking.

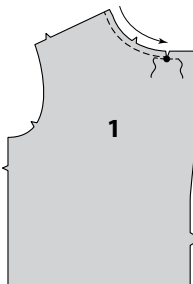


5. Pin **WRONG** side of overlay to the **RIGHT** side of **RIGHT FRONT (1)** section, matching notches. Baste raw edges together.

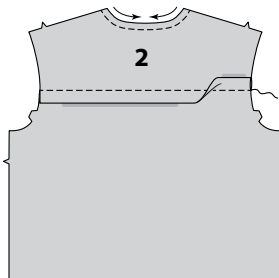


CONTINUE AS FOLLOWS FOR BOTH VIEWS

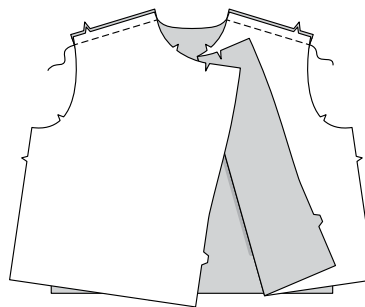
6. To reinforce neck edge of **FRONT (1)** sections at large dot, stitch along seam line for about 1" (2.5cm) each side of large dot, stitching through dot, as shown. Clip to stitching at dot. **STAYSTITCH** neck edge.



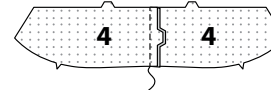
7. STAYSTITCH neck edge of **BACK (2)**. To make tuck, on **OUTSIDE**, bring broken lines together. Stitch along broken lines. Press tuck toward hemline.



8. Stitch front to back at shoulder edges.

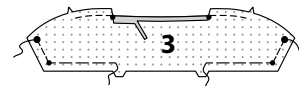


9. Stitch **UNDER COLLAR (4)** sections together at center back.

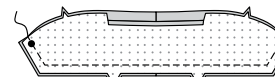


10. EASE upper edge of **UPPER COLLAR (3)** from large dot to double notch.

Machine-stitch 1/2" (1.3cm) from single notched edge of upper collar. Clip neck edge of collar to stitching at small dots. Press under 1/2" (1.3cm) on raw edge between clips. Trim to 1/4" (6mm).



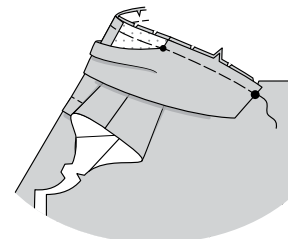
11. With **RIGHT** sides together, pin upper collar to under collar, pulling up ease stitches to fit. Stitch between large dots. Trim seam and corners.



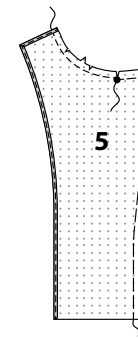
12. Turn collar; press.

Clip neck edge of jacket to staystitching.

On **OUTSIDE**, pin collar (under collar side) to neck edge, matching centers, large dots, and notches, and placing small dot at shoulder seam. Baste both upper collar and under collar sections to front neck edge as far as small dot. Baste only the under collar section to remaining neck edge between small dots.

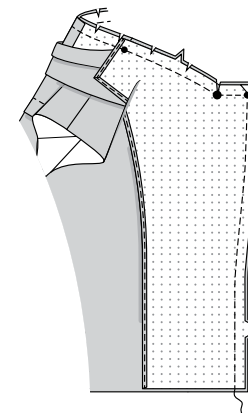


13. Machine-stitch 1/2" (1.3cm) from neck edge of **FRONT FACING (5)**. **EDGE FINISH** long unnotched edge and shoulder edge. Clip neck edge of facing to stitching. **EASE** neck and front edge from large dot to notch.



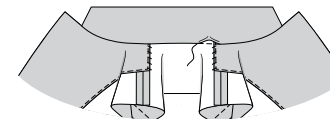
14. With **RIGHT** sides together, pin facing to front and neck edge. Baste. Clip neck edge through all thicknesses at small dot.

Stitch front and neck edge as basted, being careful not to catch in free edge of collar. Trim seam and corners; clip curves.



15. Turn facing to **INSIDE**, turning back neck seam toward collar; press. Stitch pressed edge of collar over neck seam.

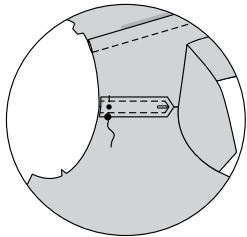
To keep the facing in place, tack facing to shoulder seam allowances by hand or with a small piece of fusible web.



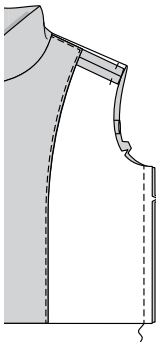
16. Stitch facing to **EPAULET (7)** in a 3/8" (1cm) seam, leaving end with small dot open. Trim seam and corners.



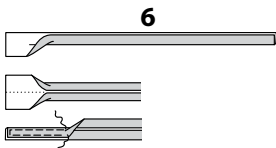
17. Turn epaulet; press. Baste raw edges together. **TOPSTITCH** finished edge. Make buttonhole at marking. On **OUTSIDE**, pin epaulet to armhole edge with raw edges even, matching large dots, placing small dot at shoulder seam. Baste.



18. Stitch front to back at side edges.



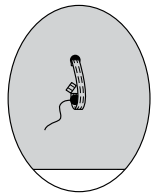
19. Fold CARRIER (6) in half, lengthwise with **WRONG** sides together. Press, setting in a crease. Open out long edges of carrier and turn them to **WRONG** side so that they meet at the crease. Press. Fold carrier in half lengthwise, bringing pressed edges together. Stitch close to both long edges.



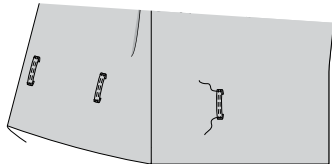
20. Cut carrier into sections that are 3-1/4" (8.3cm) long. Press under 5/8" (1.5cm) on lower end of each carrier. On **OUTSIDE**, pin upper end of carriers to jacket lapping large dots 1/2" (1.3cm). Stitch in place at large dots. Trim end to 1/4" (6mm).



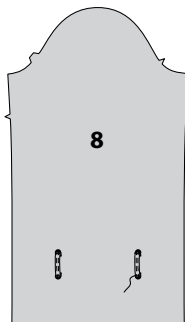
21. Open out pressed edge of carrier. Pin lower end of carrier to jacket with crease over lower large dot. Stitch in place along crease. Trim end to 1/4" (6mm).



22. Stitch carriers close to finished ends.

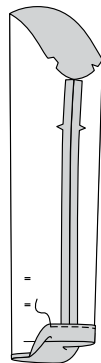


23. FOR VIEW A - Apply carriers to SLEEVE (8) sections in the same manner as jacket.

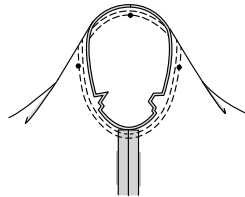


CONTINUE AS FOLLOWS FOR BOTH VIEWS

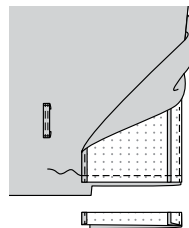
24. Stitch underarm edges of SLEEVE (8), matching notches. Press up 1-1/4" (3.2cm) hem allowance on lower edge of sleeve. Turn under raw edge 1/4" (6mm). Stitch close to inner pressed edge.



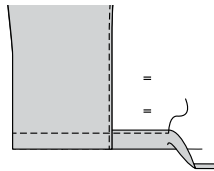
25. Turn sleeve **RIGHT** side out. Hold jacket **WRONG** side out with armhole toward you. With **RIGHT** sides together, pin sleeve to armhole edge with center small dot at shoulder seam, matching underarm seams, notches, and remaining small dots. Baste. Stitch. Stitch again 1/8" (3mm) from first stitching. Trim seam below notches close to stitching. Press only the seam allowance, shrinking out fullness.



26. Turn front facing to **OUTSIDE**. Stitch across facing along hem marking. Trim facing close to stitching. Trim garment to within 5/8" (1.5cm) of inner edge of facing.



27. Turn facing to **INSIDE**; press, pressing up hem along marking. Press under 1/4" (6mm) on raw edge. Stitch hem in place starting at opening edge.



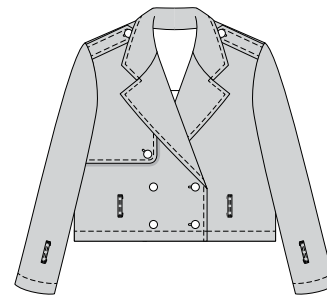
28. TOPSTITCH front, lapel, and collar edges, squaring stitching at corners.

Make buttonholes in **RIGHT** front at markings, and in **LEFT** front at upper buttonhole marking. Sew buttons under buttonholes.



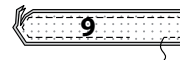
29. For epaulets, sew buttons to shoulder seams at small dots.

FOR VIEW B - Sew button to right front at small dot under overlay.

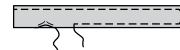


SLEEVE TAB A

30. With **RIGHT** sides together and raw edges even, pin SLEEVE TAB (9) to sleeve tab facing. Stitch in a 3/8" (1cm), leaving an opening in one long end for turning. Trim seam and corners.



31. Turn tab; press. Slipstitch opening closed. **TOPSTITCH** long edges and (grommet) marked end.



32. Make grommet and buckle prong openings on tab at markings using an awl, or by cutting small holes with an embroidery scissors.

Finish prong opening with a buttonhole stitch (a tight blanket stitch). Apply grommets following manufacturer's directions.

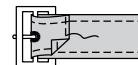
TIP - Practice applying grommets on a fabric remnant before applying to tab.



33. Slip tab through buckle. Turn end of tab to **UNDERSIDE** along foldline. Edgestitch end securely to **UNDERSIDE** through all thicknesses.

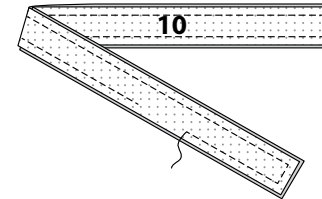
Thread tab through carriers on sleeve and buckle as shown on envelope.

If you prefer, tack tab to sleeve at underarm seam.

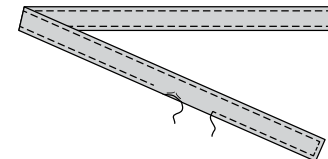


CONTINUE AS FOLLOWS FOR BOTH VIEWS

34. With **RIGHT** sides together and raw edges even, pin BELT (10) to belt facing. Stitch, leaving an opening in one long end for turning. Trim seam and corners.



35. Turn belt; press. Slipstitch opening closed. **TOPSTITCH** long edges and (grommet) marked end.



36. Make grommet and buckle prong openings on tab at markings using an awl, or by cutting small holes with an embroidery scissors.

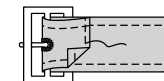
Finish prong opening with a buttonhole stitch (a tight blanket stitch). Apply grommets following manufacturer's directions.

TIP - Practice applying grommets on a fabric remnant before applying to tab.



37. Slip belt through buckle. Turn end of belt to **UNDERSIDE** along foldline. Edgestitch end securely to **UNDERSIDE** through all thicknesses.

Thread belt through carriers on jacket and buckle as shown on envelope.





Congrats!

You've completed your sewing adventure

SHARE YOUR LOOK



Post your pattern and tag us
[@simplicity_creative_group](#) and [#knowMepatterns](#)
for a chance to be featured on our social media.

Look for more PDF patterns at [simplicity.com](https://www.simplicity.com)

Have a question or need help with your sewing project call us at
1-800-782-0323

