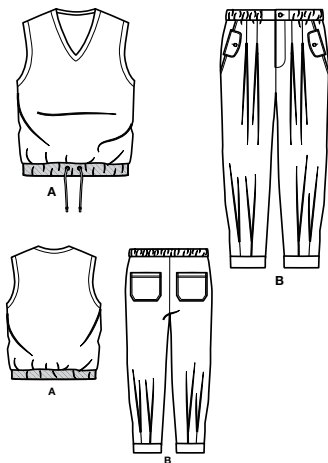
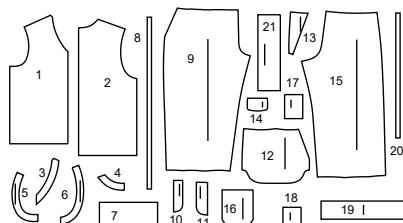


@sinsofmany



### 21 PATTERN PIECES



- 1 Front-A
- 2 Back-A
- 3 Front Facing-A
- 4 Back Facing-A
- 5 Front Armhole Facing-A
- 6 Back Armhole Facing-A
- 7 Casing-A
- 8 Guide for Elastic-A
- 9 Front-B
- 10 Right Fly-B
- 11 Left Fly Facing-B
- 12 Side Front and Pocket-B
- 13 Yoke Front-B
- 14 Flap-B
- 15 Back-B
- 16 Back Pocket-B
- 17 Right Waistband-B
- 18 Left Waistband-B
- 19 Casing-B
- 20 Guide for Elastic-B
- 21 Leg Band-B

### PATTERN MARKINGS

**GRAINLINE:** Place on straight grain of fabric, parallel to selvage or fold.

**FOLDLINE:** Place line on fold of fabric.

**BUTTONHOLE MARKING:** Indicates exact length and placement of buttonholes.

**BUTTON MARKING:** Indicates button placement.

**NOTCHES AND SYMBOLS:** For matching seams and construction details.

Indicates the Bustline, Waistline, Hip and/or Biceps. Measurements refer to circumference of Finished Garment (Body Measurement + Wearing Ease + Design Ease). Adjust pattern if necessary. The measurement excludes pleats, tucks, darts and seam allowances.

**SEAM ALLOWANCE:** 5/8" (1.5cm) included unless otherwise indicated, but not printed on tissue.

### ADJUST IF NECESSARY

Lengthen or Shorten at adjustment lines (==) or where indicated on pattern. If substantial length is added, you may need to purchase additional fabric.

**TO SHORTEN:** Crease along adjustment line. Make a fold half the amount needed. Tape in place.

**TO LENGTHEN:** Slash between adjustment lines. Spread amount as needed, keeping edges parallel. Tape over paper.

When Alteration lines are not on tissue, lengthen or shorten at lower edge.

### CUTTING AND MARKING

**SHRINK FABRIC** if not labeled pre-shrunk. Press.

**CIRCLE LAYOUT** for View, Size, Fabric Width.

Use **WITH NAP** layout for fabrics with one-way designs, nap, pile or surface shading. Because most knits have surface shading, a with nap layout is used.

For **DOUBLE THICKNESS (WITH FOLD)** - fold fabric with right sides together.

**\* DOUBLE THICKNESS (WITHOUT FOLD)** - For fabrics with nap, fold fabric crosswise, right sides together. Mark as shown. Cut along crosswise fold of fabric (A). Turn upper layer 180° so arrows go in same direction and place over lower layer, right sides together (B).

For **SINGLE THICKNESS** - place fabric right side up. (For Fur Flee fabrics, place pile side down.)

★ Cut other pieces first, allowing enough fabric to cut this piece. Open fabric. For "Cut 1" pieces, cut piece once on single layer of fabric with piece face up on right side of fabric.

Pattern may have cutting lines for several sizes. Select the proper cutting line or pattern pieces for your size.

Before **CUTTING** place all pieces on fabric according to layout. Pin. (Layouts show approximate position of pattern pieces; position may vary according to your pattern size.) Cut **ACCURATELY**, cutting notches outward.

Before removing pattern, **TRANSFER MARKINGS** and lines of construction to Wrong Side of fabric, using the Pin and Chalk/Pencil method or Tracing Paper and Dressmaker Wheel. Markings needed on right side of fabric should be thread traced.

**NOTE:** Broken-line boxes (a! b! c!) in layouts represent pieces cut by measurements provided.

## CUTTING LAYOUTS

### VEST A

USE PIECES: 1 2 3 4 5 6  
CUT ONE OF PIECE 3

45" TO 60" (115 cm TO 150 cm)  
WITH NAP  
ALL SIZES

### CONTRAST

USE PIECE: 7

45" TO 60" (115 cm TO 150 cm)  
WITH NAP  
ALL SIZES

### INTERFACING

USE PIECES: 3 4 5 6

20" (51 cm)  
ALL SIZES

### PANTS B

USE PIECES: 9 10 11 13 14 15 16 17 18 19 21  
CUT ONE OF PIECES 11 17 AND 18  
45" (115 cm)  
WITH NAP  
SIZES 38 40 42 44 46 48

### 45" (115 cm) WITH NAP SIZES 50 52 54 58

### 60" (150 cm) WITH NAP ALL SIZES

### INTERFACING

USE PIECES: 10 11 14 17 18 21

20" (51 cm)  
ALL SIZES

### LINING

USE PIECE: 12

45" (115 cm)  
WITHOUT NAP  
ALL SIZES

## SEWING INFORMATION

### FABRIC KEY

### SEAM ALLOWANCES

Use 5/8" (1.5cm) seam allowances unless otherwise indicated.

### PIN AND FIT

Pin or baste seams, **RIGHT SIDE TOGETHER**, matching notches. Fit garment before stitching major seams.

### PRESS

Press seam allowances flat; then open unless otherwise stated. Clip where necessary so they lie flat.

### GLOSSARY

Sewing terms appearing in **BOLD TYPE** in Sewing Instructions are explained below.

**EDGE STITCH** - Stitch close to finished edge or seam.

**FINISH** - Stitch 1/4" (6mm) from raw edge and finish with one of the following: (1) Pink OR (2) Overcast OR (3) Turn in along stitching and stitch close to fold OR (4) Overlock.

**OPTIONAL FOR HEMS:** Apply Seam Binding.

**SLIPSTITCH** - Slide needle through a folded edge, then pick up a thread of underneath fabric.

**STAYSTITCH** - Stitch 1/2" (1.3cm) from seamline in seam allowance.

**TOPSTITCH** - On outside, stitch 1/4" (6mm) from edge, seam or previous stitching, using presser foot as guide, or stitch where indicated in instructions.

**UNDERSTITCH** - Open out facing or underside of garment; stitch to seam allowance close to seam.

© 2024 KnowMe® an IG Design Group Americas, Inc. brand. All Rights Reserved. Printed in U.S.A.

PATTERN PIECES WILL BE IDENTIFIED BY NUMBERS THE FIRST TIME THEY ARE USED.

STITCH SEAMS WITH RIGHT SIDES TOGETHER UNLESS OTHERWISE STATED.

ALL SEAMS 5/8"(1.5CM) UNLESS OTHERWISE INDICATED.



SCAN QR CODE  
FOR A  
STEP-BY-STEP  
VIDEO TUTORIAL



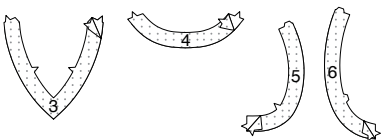
@sinsofmany

## SEWING DIRECTIONS

### VEST A

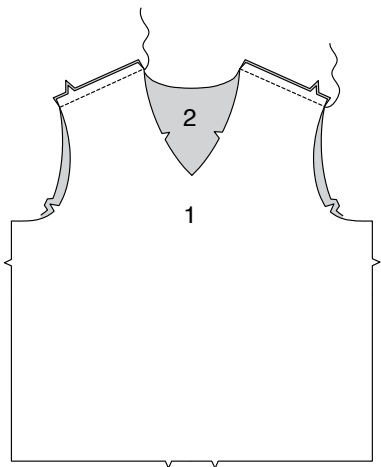
#### INTERFACING

1. Pin INTERFACING to wrong side of each matching FABRIC section. Fuse, following manufacturer's instructions.

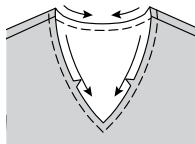


#### FRONT AND BACK

2. With right sides together, pin FRONT (1) to BACK (2) together at shoulders.

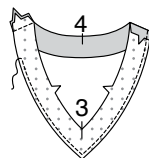


3. FOR WOVEN FABRICS- STAYSTITCH neck edge of garment, in direction of arrows.



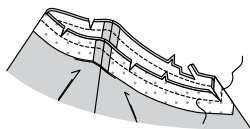
4. FOR ALL FABRICS- With right sides together, stitch shoulder seams of FRONT FACING (3) and BACK FACING (4).

FINISH unnotched edge of facing.

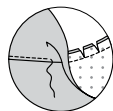


5. With right sides together, pin facing to neck edge, matching centers and shoulder seams.

Stitch along stitching lines on facing and along seam line. To reinforce seam at center front, stitch over first stitching. Trim seam; clip curves and to stitching at center front.

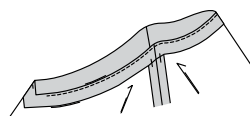


6. UNDERSTITCH facing, as far as possible.

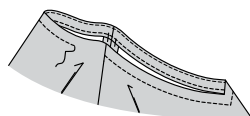


7. Turn facing to inside. Press.

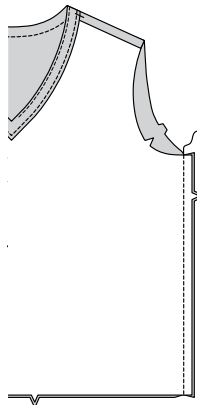
To keep the facing from rolling to outside, secure it at the seam allowances by tacking it by hand.



8. On outside, TOPSTITCH neck edge 3/4"(2cm) from finished edge.



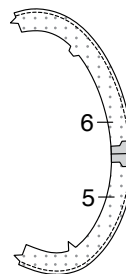
9. With right sides together, stitch front to back at side seams.



#### ARMHOLE FACING

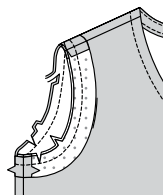
10. With right sides together, stitch shoulder seams of FRONT ARMHOLE FACING (5) and BACK ARMHOLE FACING (6).

FINISH unnotched edge of facing.

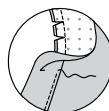


11. Stitch underarm seam of facing sections.

With right sides together, stitch facing to armhole edge, matching shoulder and underarm seams. Trim seam. Clip curves.

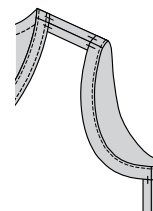


12. UNDERSTITCH facing.

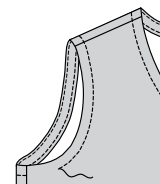


13. Turn facing to inside. Press.

To keep the facing from rolling to outside, secure it at the seam allowances by tacking it by hand.



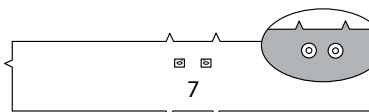
14. On outside, TOPSTITCH armhole edge 3/4"(2cm) away from finished edge.



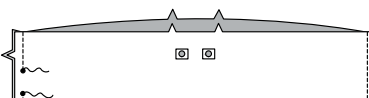
#### FINISHING

15. Apply a piece of fusible interfacing remnant to one CASING (7) section large enough to cover each buttonhole area, following manufacturer's directions.

On outside apply grommets to casing at markings, following manufacturer's directions. This is the front casing.

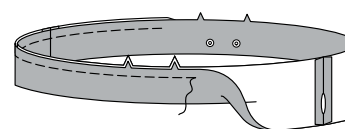


16. With right sides together, stitch side seams of casing, leaving an opening in left side seam between small dots, as shown. Back-stitch at small dots to reinforce seam.

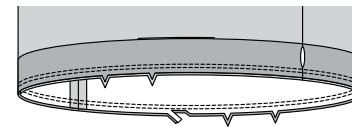


17. Press seam open.

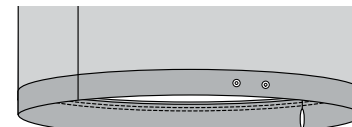
Fold casing in half, lengthwise, with wrong sides together, having raw edges even. Baste raw edges together. The side with the opening is the underside of the casing.



18. With the underside of casing facing you, pin casing to lower edge of vest, matching centers and side seams. Stitch along seam line. Stitch again 1/4"(6mm) from first stitching within seam allowance. Trim close to second stitching.



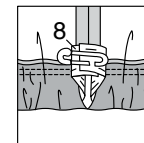
19. Press seam toward vest, pressing casing out.



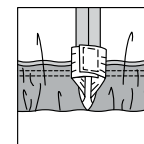
20. Cut a piece of elastic the length of GUIDE FOR ELASTIC (8).

Insert elastic through opening in casing.

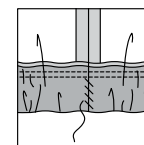
Overlap ends and hold with a safety pin. Try on garment and adjust to fit if necessary.



21. Stitch ends of elastic together securely.

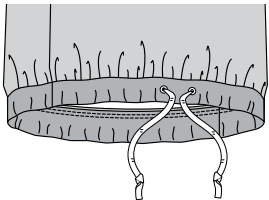


22. SLIPSTITCH opening edges of casing together. Distribute fullness evenly.



**23.** Cut a piece of drawstring 62"(157 cm) long OR as desired.

Attach a safety pin to one end of drawstring. Insert pin and drawstring through one grommet opening in front casing. Work drawstring through entire casing and out through remaining grommet, having ends extend evenly in the front. Knot ends of drawstring.

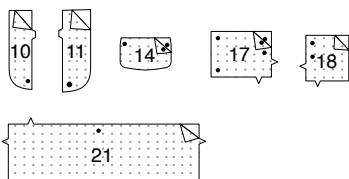


**NOTE:** PANTS SIT 1" (2.5CM) BELOW WAIST.

## PANTS B

### INTERFACING

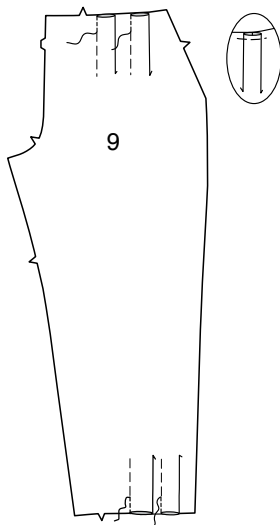
**1.** Pin **INTERFACING** to wrong side of each matching **FABRIC** section. Fuse, following manufacturer's instructions.



### FRONT AND SIDE POCKET

**2.** To make pleats in **FRONT** (9), on inside, bring broken lines together. Stitch along broken lines. Press pleats flat bringing stitching to center.

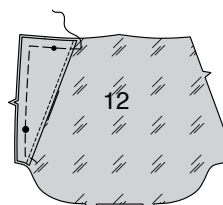
Baste across raw edge.



**3.** **FINISH** unmarked edge of **YOKE FRONT** (13).

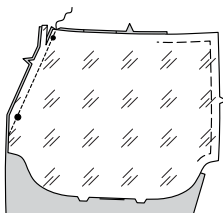


**4.** On outside, pin wrong side of yoke to right side of **SIDE FRONT AND POCKET** (12) matching notches and dots. Baste outer edges in place.



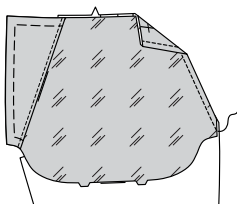
**5.** With **RIGHT** sides together and raw edges even, pin side front and pocket to front, matching small and large dots.

Stitch single notched edge. Trim seam.

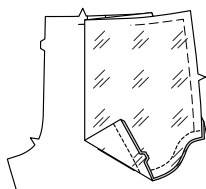


**6.** Turn pocket to inside; press.

On outside, **TOPSTITCH** 1/4" (6mm) from finished edge.



**7.** On inside, with **RIGHT** sides together, fold pocket along fold line, having raw edges even. Stitch double notched edge, as shown.



**8.** Construct **FLAP** (14) as follows:

With right sides facing each other, stitch two flap sections together, leaving edge with small dots open. Trim seam and corners.



**9.** Turn flaps; press. Machine-baste 5/8" (1.5cm) from raw edge.

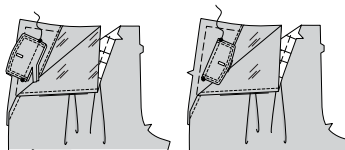
On outside, **EDGESTITCH** and **TOPSTITCH** finished edges of flap.

Make buttonhole in flap at markings.

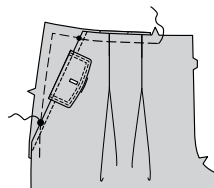


**10.** On outside, pin flap to side, placing basting along placement line, matching small dots, as shown. Stitch along basting. Trim close to stitching.

Turn flap down; press. **TOPSTITCH** upper edge.



**11.** On outside, lap pants front over side front and pocket section, matching small and large dots, having raw edges even; pin. Baste side and upper edges together.



**12. A-** Stitch front sections together at center front between large dot and notch.

**B-** Turn in right front opening edge along foldline; press.

**C-** Place closed zipper (face up) under right front opening edge, having pressed edge close to zipper teeth and zipper stop at small dot. Using a zipper foot, baste close to pressed edge.

**D-** With right sides together, stitch **RIGHT FLY** (10) sections together along curved edge, leaving upper and notched edges open. Trim. Turn. Press. Baste raw edges.

**E-** On inside, pin right fly to right front opening edge (over zipper), matching notches and small dots, having raw edges even. Baste along previous basting for zipper.

**F-** On outside, using a zipper foot, stitch close to pressed edge of front through all layers.

**G-** **FINISH** outer edge of **LEFT FLY FACING** (11). Pin fly facing to left front opening edge, matching notches and large dots. Stitch, ending at large dot. Trim. **UNDERSTITCH** fly facing. Turn facing to inside.

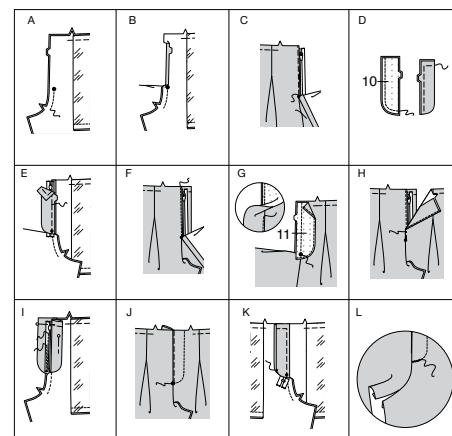
**H-** Lap left front over right, matching centers. Baste close to edge through all thicknesses.

**I-** Pin right fly out of the way. Open out fly facing. Pin remaining zipper tape to fly facing, keeping left front free. Using a zipper foot, stitch in place close to zipper teeth and along center of zipper tape.

**J-** Turn facing down. On outside, stitch left front along stitching line, keeping right fly free.

**K-** Turn right fly back in place. On inside, hand tack fly and facing together at lower edge, as shown. Trim away excess zipper tape even with lower edge of fly, if needed.

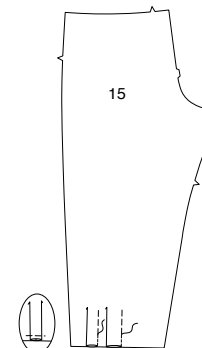
**L-** If desired, on outside, machine-stitch a bar tack across lower end of fly through all thicknesses.



## BACK AND SEAMS

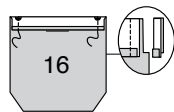
**13.** To make pleats in **BACK** (15), on inside, bring broken lines together. Stitch along broken lines. Press pleats flat bringing stitching to center.

Baste across raw edge.



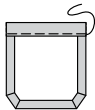
- 14.** Turn in 1/4" (6mm) on upper edge of each BACK POCKET (16). Press.

Turn upper edge to outside along foldline. Stitch ends. Trim.

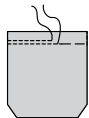


- 15.** Turn upper edge of pocket to inside, turning in remaining seam allowances and diagonally folding corners. Press.

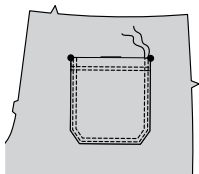
Baste close to inner pressed edge.



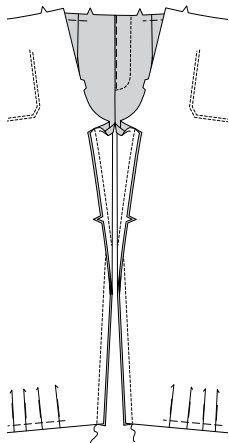
- 16.** TOPSTITCH along basting. Stitch again 1/4" (6mm) above first stitching.



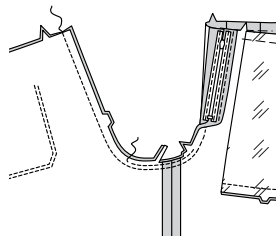
- 17.** On outside, pin pockets to back, matching large dots. **EDGE**STITCH and **TOP**STITCH side and lower edges, (reinforcing upper ends).



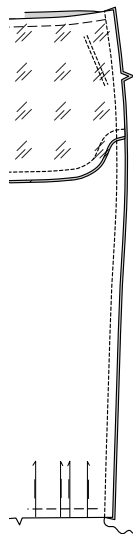
- 18.** Stitch front and back together at inner leg edges.



- 19.** Stitch remainder of crotch seam to notch in front. Stitch again 1/4" (6mm) away in seam allowance along curve, as shown. Trim close to second stitching.

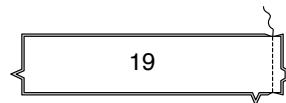


- 20.** Stitch front to back at sides.



#### WAISTBAND AND CASING

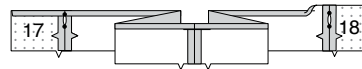
- 21.** With right sides together, stitch center back seam of CASING (19) sections.



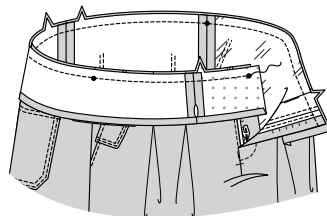
- 22.** With right sides together, pin RIGHT WAISTBAND (17) and BACK WAISTBAND (18) to each side of casing, matching notches, and small dots.

Stitch leaving an opening at each side between small dots. Back-stitch to reinforce seam.

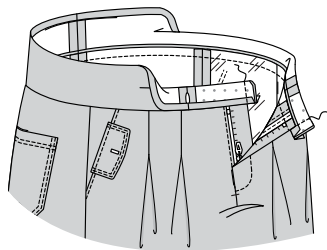
Press under 1/2" (1.3cm) on unnotched edge of waistband.



- 23.** On outside, pin waistband to upper edge of pants, matching notches, placing small dots at opening edges on right front, matching remaining small dots to side seams. Stitch.

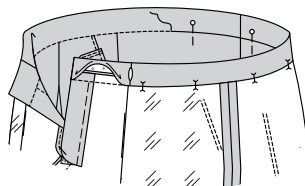


- 24.** Press seam up pressing waistband out. Turn front edges of waistband to outside, along foldline. Stitch ends.

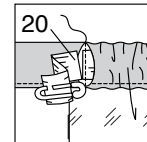


- 25.** Turn waistband to inside, pinning pressed edge of waist band over seam, placing pins on outside.

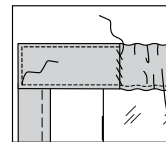
On outside, stitch in the ditch OR "groove" of seam, catching in pressed edge on inside.



- 26.** Cut a piece of elastic the measurement of GUIDE FOR ELASTIC (20). Attach a safety pin to one end of elastic. Insert one end of elastic through opening in casing, having ends of elastic extend 5/8" (1.5cm) beyond openings in casing. Stitch across ends of elastic, in groove of seam, through all thicknesses. Trim away ends of elastic.



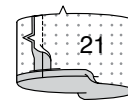
- 27.** SLIPSTITCH openings in casing closed. **EDGE**STITCH front edges of waistband.



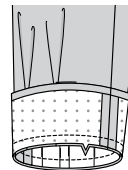
#### LEG BAND

- 28.** With right sides together, stitch ends of LEG BAND (21), matching notches.

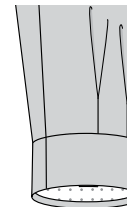
Press under 1/2" (1.3cm) on unnotched edge.



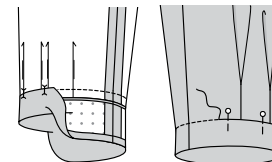
- 29.** With right sides together, pin leg band to lower edge of pants matching notches and inner leg seams. Stitch.



- 30.** Press seam toward band, pressing band out.



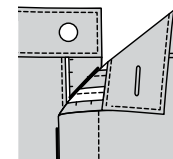
- 31.** Turn band to inside along foldline. Press. Pin pressed edge of band over seam, placing pins on outside. On outside, stitch in the ditch OR "groove" of seam, catching in pressed edge of band on inside.



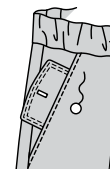
#### FINISHING

- 32.** Make buttonhole in left front waistband at marking.

Hand-sew buttons to right front at marking.



- 33.** Hand-sew buttons to side edges of front at markings.







# Congrats!

You've completed your sewing adventure

---

## SHARE YOUR LOOK



Post your pattern and tag us  
[@simplicity\\_creative\\_group](#) and [#knowMepatterns](#)  
for a chance to be featured on our social media.

Look for more PDF patterns at [simplicity.com](https://www.simplicity.com)

Have a question or need help with your sewing project call us at  
1-800-782-0323



KnowMe ©2023 a division of IG Design Group Americas Inc. • Atlanta, GA 30342 USA [www.thedesigngroup.com](http://www.thedesigngroup.com) • All Rights Reserved. [www.mccall.com](http://www.mccall.com) • Made in the U.S.A. Fabriqué aux États-Unis.  
To be used for individual private home use only and not for commercial or manufacturing purposes. • A usage privé seulement et non à des fins commerciales ou de production en série. • Para uso privado solamente, no se puede utilizar con propósitos de comercialización o de producción en serie.