



ALISHA GRACE
knowME
BY mimi g

ME2085



B



A

Scan QR code for a Sew-Along video tutorial.



@missalishagrace



Designed and printed in USA

Average

MISSES' DRESS IN TWO LENGTHS

Suggested Fabrics: Cotton Blends, Linen Blends, Pique, Sateen, Satin, Taffeta. **Lining:** Cotton Blends, Polyester Blends. **Interfacing:** Lightweight Fusible.

Notions: A,B: One 24" (61cm) invisible zipper.

Sizes	8	10	12	14	16	18	20	22	24	26
European	34	36	38	40	42	44	46	48	50	52

BODY MEASUREMENTS: Select pattern size based on body measurements

Bust	31½	32½	34	36	38	40	42	44	46	48	Ins.
Waist	24	25	26½	28	30	32	34	37	39	41	"
Hip-9" below waist	33½	34½	36	38	40	42	44	46	48	50	"
Back-neck to waist	15¾	16	16¼	16½	16¾	17	17¼	17½	17¾	18	"

Lining A,B	45***	5%	5%	5%	5%	5%	5%	¾	¾	¾	¾	Yds.
Interfacing	20"	1	1	1	1½	1½	1½	1½	1¾	1¾	1¾	"
Dress A	45**	2½	2½	2½	2¾	2¾	2¾	3½	3½	3½	3½	Yds.
	60**	2½	2½	2½	2½	2½	2½	2½	2½	2½	2½	"
Dress B	45**	5%	5%	5%	5%	5%	5%	5%	52½	6	Yds.	
	60**	4¾	4¾	4¾	4¾	4¾	4¾	4¾	5	5	"	

FINISHED GARMENT MEASUREMENTS (Includes Design and Wearing Ease)

A,B Bust	33½	34½	36	38	40	42	44	46	48	50	Ins.
A,B Waist	25	26	27½	29½	33½	35½	35½	37½	39½	41½	"

Finished back length from base of neck

Dress A	33¾	34	34¾	34¾	35	35¼	35½	35¾	36	Ins.
Dress B	49¾	50	50¼	50½	50¾	51	51¼	51¾	52	"

*with nap **without nap

Moins Facile

ROBE EN DEUX LONGUEURS POUR JEUNES FEMMES

Tissus Conseillés: Cotonnades, Toile de lin mélangés, Piqué, Satin de coton, Satin, Taffetas.

Doubleur: Cotonnades, Mélanges de polyester. **Entoilage:** Thermocollant léger.

Mercerie: A,B: 1 fermeture à glissière invisible de 61cm.

Tailles	8	10	12	14	16	18	20	22	24	26
Françaises	36	38	40	42	44	46	48	50	52	54
Européen	34	36	38	40	42	44	46	48	50	52

MESURES DU CORPS: Choisissez la taille du patron basée sur les mesures du corps

Poitrine	80	83	87	92	97	102	107	112	117	122	cm
Taille	61	64	67	71	76	81	87	94	99	104	"
Hanches (23cm au-dessous de la taille)	85	88	92	97	102	107	112	117	122	127	cm
Dos du cou à la taille	40	40.5	41.5	42	42.5	43	44	44.5	45	46	"

Doubleur A,B	115cm**	0.6	0.6	0.6	0.6	0.6	0.6	0.7	0.7	0.7	0.7	m
Entoilage	51cm	0.9	0.9	0.9	1.0	1.0	1.0	1.1	1.3	1.3	"	
Robe A	115cm*	2.4	2.4	2.4	2.5	2.5	2.5	2.6	2.9	2.9	2.9	m
	150cm*	2.2	2.2	2.2	2.2	2.3	2.3	2.3	2.3	2.3	"	
Robe B	115cm*	5.1	5.1	5.3	5.3	5.3	5.3	5.4	5.4	5.5	5.5	m
	150cm*	4.3	4.3	4.3	4.3	4.3	4.5	4.5	4.5	4.6	4.6	"

MESURES DES VÊTEMENTS FINI (Motif et aisance de port compris)

A,B Poitrine	85	88	91	97	102	107	112	117	122	127	cm
A,B Taille	64	66	70	75	80	85	90	95	100	105	"
Longueur finie – dos, votre nuque à l'ourlet											
Robe A	86	86	87	88	88	89	90	90	91	91	cm
Robe B	126	127	128	128	129	130	130	131	131	132	"

*avec sens **sans sens

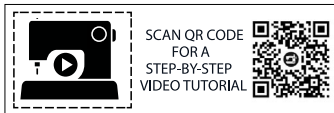


A



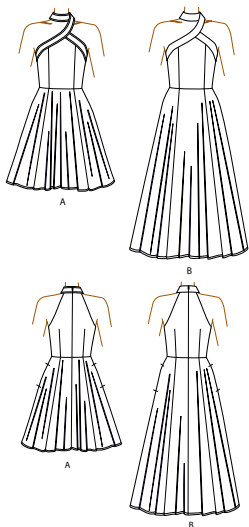
B



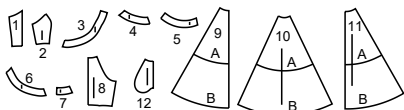


SCAN QR CODE FOR A STEP-BY-STEP VIDEO TUTORIAL

@missalishagrace



12 PATTERN PIECES



- 1 Bodice Front-A,B
- 2 Bodice Side Front-A,B
- 3 Right Front Band-A,B
- 4 Left Front Band-A,B
- 5 Neckband-A,B
- 6 Right Front Facing-A,B
- 7 Band Facing-A,B
- 8 Bodice Back-A,B
- 9 Skirt Front-A,B
- 10 Skirt Side Front and Side Back-A,B
- 11 Skirt Back-A,B
- 12 Pocket-A,B

PATTERN MARKINGS
GRAINLINE: Place on straight grain of fabric, parallel to selvage or fold.
FOLDLINE: Place line on fold of fabric.
BUTTONHOLE MARKING: Indicates exact length and placement of buttonholes.
BUTTON MARKING: Indicates button placement.
NOTCHES AND SYMBOLS: For matching seams and construction details.
 Indicates the Bustline, Waistline, Hip and/or Biceps. Measurements refer to circumference of Finished Garment (Body Measurement + Wearing Ease + Design Ease). Adjust pattern if necessary. The measurement excludes pleats, tucks, darts and seam allowances.
SEAM ALLOWANCE: 5/8" (1.5cm) included unless otherwise indicated, but not printed on tissue.

ADJUST IF NECESSARY
 Lengthen or Shorten at adjustment lines (==) or where indicated on pattern. If substantial length is added, you may need to purchase additional fabric.
TO SHORTEN: Crease along adjustment line. Make a fold half the amount needed. Tape in place.

TO LENGTHEN: Slash between adjustment lines. Spread amount as needed, keeping edges parallel. Tape over paper.

 When Alteration lines are not on tissue, lengthen or shorten at lower edge.

CUTTING AND MARKING
SHRINK FABRIC if not labeled pre-shrunk. Press.
CIRCLE LAYOUT for View, Size, Fabric Width.
 Use **WITH NAP** layout for fabrics with one-way designs, nap, pile or surface shading. Because most knits have surface shading, a with nap layout is used.
 For **DOUBLE THICKNESS (WITH FOLD)** - fold fabric with right sides together.

*** DOUBLE THICKNESS (WITHOUT FOLD)** - For fabrics with nap, fold fabric crosswise, right sides together. Mark as shown. Cut along crosswise fold of fabric (A). Turn upper layer 180° so arrows go in same direction and place over lower layer, right sides together (B).

 For **SINGLE THICKNESS** - place fabric right side up. (For Fur Flee fabrics, place pile side down.)

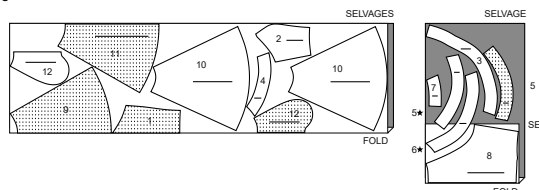
★ Cut other pieces first, allowing enough fabric to cut this piece. Open fabric. For "Cut 1" pieces, cut piece once on single layer of fabric with piece face up on right side of fabric.
 Pattern may have cutting lines for several sizes. Select the proper cutting line or pattern pieces for your size.
 Before **CUTTING** place all pieces on fabric according to layout. Pin. (**Layouts show approximate position of pattern pieces; position may vary according to your pattern size.**) Cut **ACCURATELY**, cutting notches outward.
 Before removing pattern, **TRANSFER MARKINGS** and lines of construction to Wrong Side of fabric, using the Pin and Chalk Pencil method or Tracing Paper and Dressmaker Wheel. Markings needed on right side of fabric should be thread traced.
NOTE: Broken-line boxes (a| b| c|) in layouts represent pieces cut by measurements provided.

CUTTING LAYOUTS

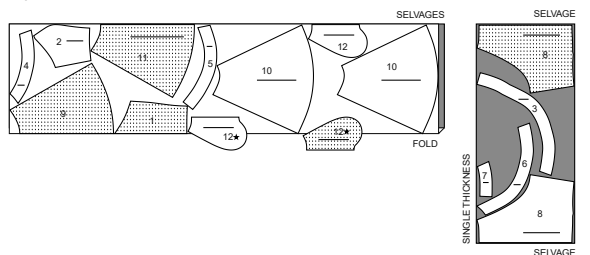
DRESS A

PIECES 1 2 3 4 5 6 7 8 9 10 11 12

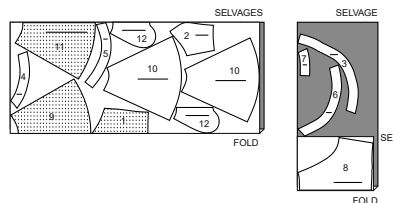
45" (115CM)
 WITH NAP
 SIZES 8 10 12 14 16 18



45" (115CM)
 WITH NAP
 SIZES 20 22 24 26



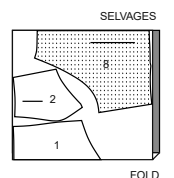
60" (150CM)
 WITH NAP
 ALL SIZES



LINING A,B

PIECES 1 2 8

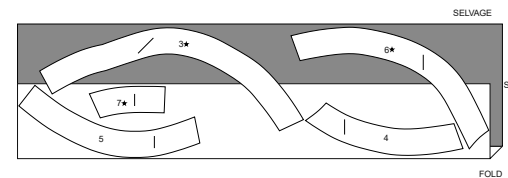
45" (115CM)
 WITH NAP
 ALL SIZES



INTERFACING A,B

PIECES 3 4 5 6 7

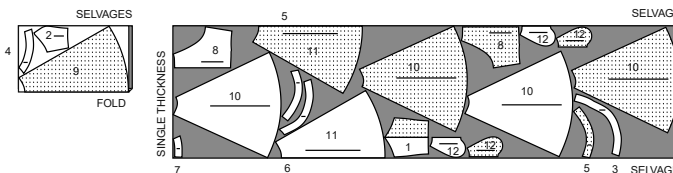
20" (51CM)
 ALL SIZES



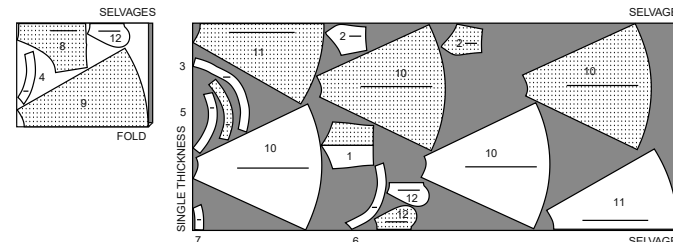
DRESS B

PIECES 1 2 3 4 5 6 7 8 9 10 11 12

45" (115CM)
 WITH NAP
 ALL SIZES

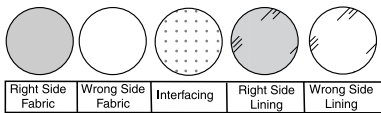


60" (150CM)
 WITH NAP
 ALL SIZES



SEWING INFORMATION

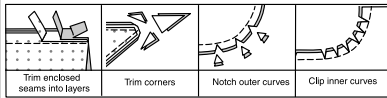
FABRIC KEY



Right Side Fabric Wrong Side Fabric Interfacing Right Side Lining Wrong Side Lining

SEAM ALLOWANCES

Use 5/8" (1.5cm) seam allowances unless otherwise indicated.



PIN AND FIT

Pin or baste seams, **RIGHT SIDE TOGETHER**, matching notches. Fit garment before stitching major seams.

PRESS

Press seam allowances flat; then open unless otherwise stated. Clip where necessary so they lie flat.

GLOSSARY

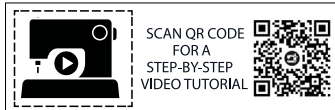
Sewing terms appearing in **BOLD TYPE** in Sewing Instructions are explained below.

SLIPSTITCH - Slide needle through a folded edge, then pick up a thread of underneath fabric.

STAYSTITCH - Stitch 1/8" (3mm) from seamline in seam allowance (usually 1/2" (13mm) from raw edge).

UNDERSTITCH - Open out facing or underside of garment; stitch to seam allowance close to seam.

TOPSTITCH - On outside, stitch 1/4" (6mm) from edge, seam or previous stitching, using presser foot as guide, or stitch where indicated in instructions.



@missalishgrace

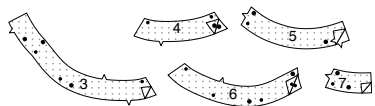
SEWING DIRECTIONS

DRESS A, B

NOTE: Under each sub-heading, the first View will be illustrated, unless otherwise indicated.

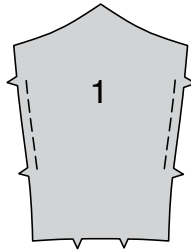
INTERFACING

1. Pin **INTERFACING** to wrong side of each matching **FABRIC** section. Fuse, following manufacturer's instructions.

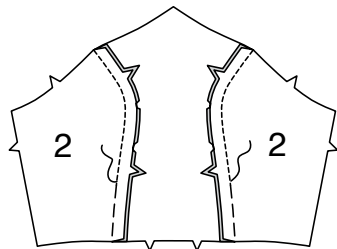


BODICE

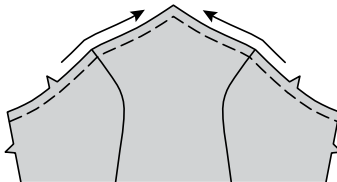
2. **STAYSTITCH** side edges of **BODICE FRONT** (1).



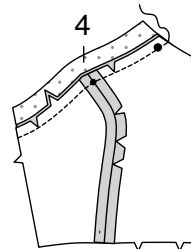
3. With **RIGHT** sides together, pin **BODICE SIDE FRONT** (2) to side edges of bodice front, matching notches, clipping bodice front where necessary. Baste. Stitch.



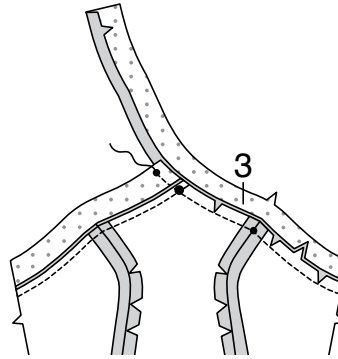
4. **STAYSTITCH** upper edges of bodice front in direction of arrows.



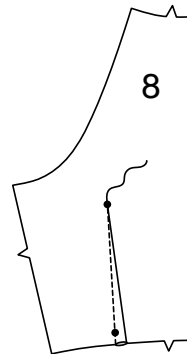
5. With **RIGHT** sides together, pin one **LEFT FRONT BAND** (4) section to upper edge of bodice front, matching large dots, placing small dot at seam, clipping bodice front where necessary. Baste. Stitch. Trim. Press seam toward band.
NOTE: Remaining left front band will be used as facing.



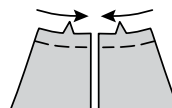
6. With **RIGHT** sides together, pin **RIGHT FRONT BAND** (3) to upper edge of bodice front, matching outer small dots, large dots and placing remaining small dot at seam, clipping bodice front where necessary. Baste. Stitch, ending at small dot on bands. Trim. Press seam toward band.



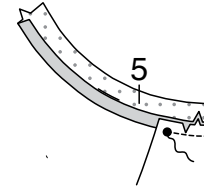
7. Stitch dart in **BODICE BACK** (8). Press dart toward center.



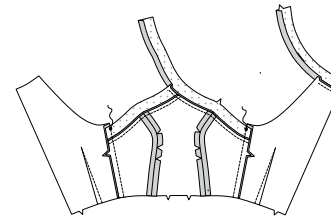
8. **STAYSTITCH** upper edge of bodice back in direction of arrows.



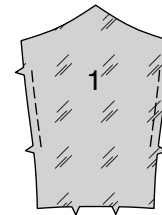
9. With **RIGHT** sides together, pin one **NECK BAND** (5) to upper edge of right back, matching notches and large dots, clipping right back where necessary. Stitch to large dot. Trim. **NOTE:** Remaining neck band will be used as facing.



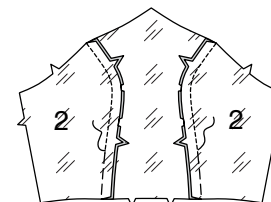
10. Pin bodice front to bodice backs at sides matching large dots. Stitch ending at large dot.



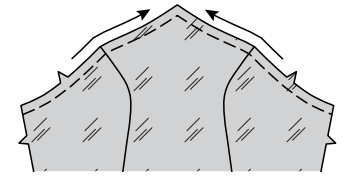
11. **STAYSTITCH** side edges of bodice front **LINING** (1).



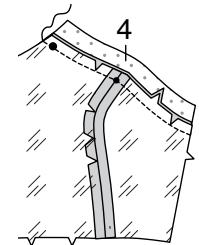
12. With **RIGHT** sides together, pin bodice side front **LINING** (2) to side edges of bodice front lining, matching notches, clipping bodice front where necessary. Baste. Stitch.



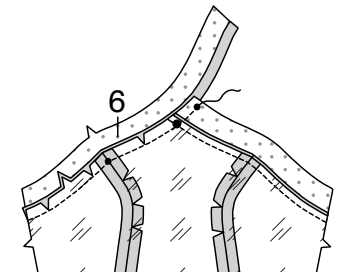
13. **STAYSTITCH** upper edges of bodice front lining in direction of arrows.



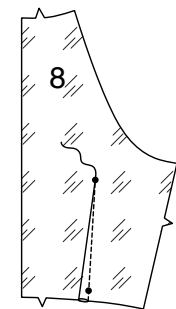
14. With **RIGHT** sides together, pin left front band **FACING** to upper edge of bodice front lining, matching large dots, placing small dot at seam, clipping bodice front lining where necessary. Baste. Stitch. Trim.



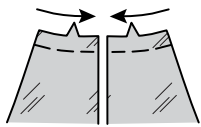
15. With **RIGHT** sides together, pin **RIGHT FRONT FACING** (6) to upper edge of bodice front lining, matching outer small dots, large dots and placing remaining small dot at seam, clipping bodice front lining where necessary. Baste. Stitch to small dot on left front band. Trim. Press seam toward band.



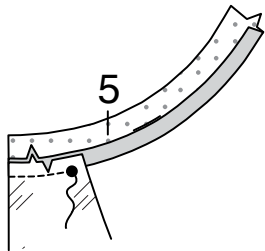
16. Stitch dart in bodice back **LINING** (8). Press dart toward center.



17. **STAYSTITCH** upper edge of bodice back lining in direction of arrows.



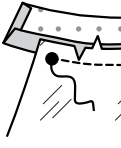
18. With **RIGHT** sides together, pin neck band **FACING** to upper edge of right back lining, matching notches and large dots, clipping right back lining where necessary. Stitch to large dot. Trim. Press seam toward band.



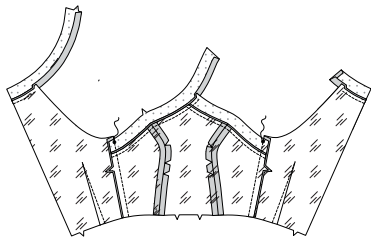
19. Turn in seam allowance on notched edge of **BAND FACING** (7). Press. Trim pressed seam allowance to 3/8"(1cm).



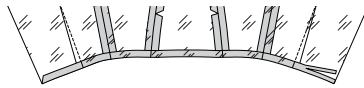
20. With **RIGHT** sides together, pin band facing to upper edge of left back lining, matching notches and large dots, clipping left back lining where necessary. Stitch to large dot. Trim. Press seam toward band.



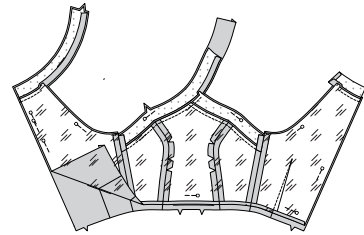
21. Stitch bodice front lining to bodice back linings at sides.



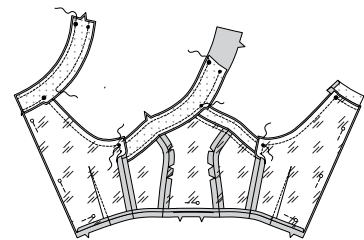
22. Turn in seam allowance on lower edge of lining. Press. Trim pressed seam allowance to 3/8" (1cm).



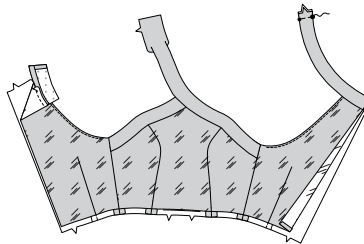
23. With **RIGHT** sides together, pin lining and facings to bodice and bands.



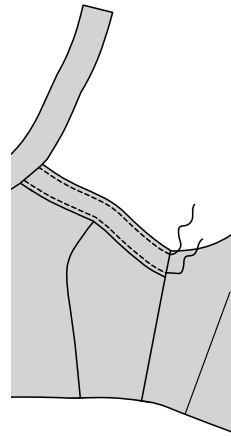
24. Stitch upper edge of neck band in a 3/8"(1cm) seam. Stitch lower edge of neck band to large dot. Stitch armhole edges between large and small dots. Stitch upper edges of left and right band in 3/8"(1cm) seams, breaking stitching at small dots. Stitch lower edge of right band, ending stitching at lower small dot. **UNDERSTITCH** armhole edges as far as possible.



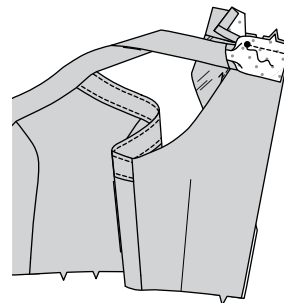
25. Turn. Press. Baste raw edges of neck band.



VIEW A:
26. **TOPSTITCH** left front band, as shown.

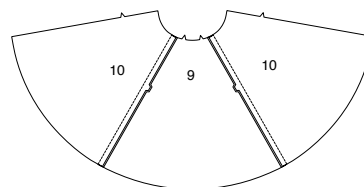


VIEWS A, B:
27. With **RIGHT** sides together, pin right front band to upper edge of left back, matching notches and large dots, clipping left back where necessary. Stitch to large dot. Trim.

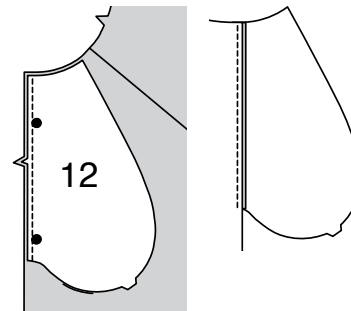


SKIRT

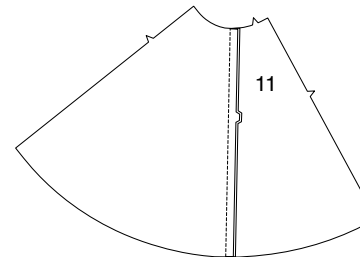
28. Stitch one **SKIRT SIDE FRONT AND SIDE BACK** (10) to each side of **SKIRT FRONT** (9) at sides. **NOTE:** Remaining skirt side front and side back sections will be used for back.



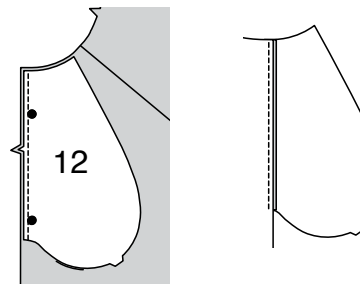
29. Stitch one **POCKET** (12) section to skirt front at each side in 1/4"(6mm) seam. Press seams toward pockets. **NOTE:** Remaining pocket sections will be used for back.



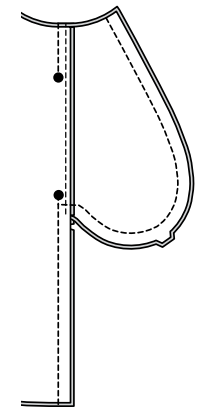
30. Stitch one remaining skirt side front and side back section to side edge of each **SKIRT BACK** (11).



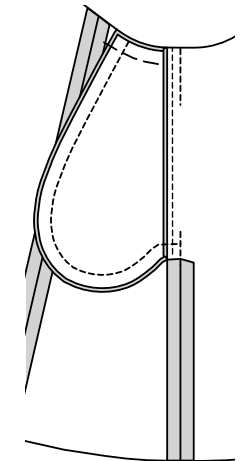
31. Stitch one remaining pocket section to each skirt back at side in 1/4"(6mm) seam. Press seams toward pockets.



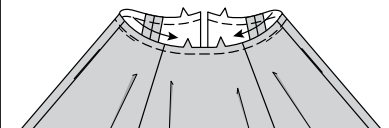
32. Stitch front and back together at sides, leaving open between large dots. Stitch pocket edges together to side seams. Clip back seam allowances below pockets.



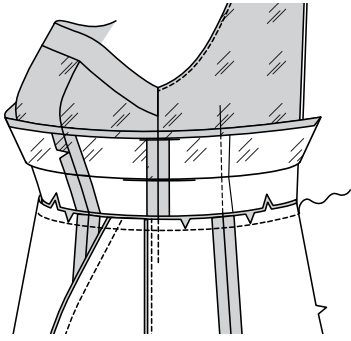
33. Turn pockets toward front along seamlines; press. Baste across upper edges.



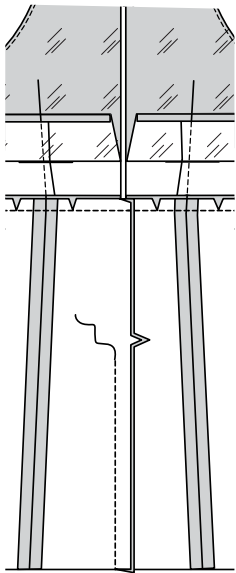
34. **STAYSTITCH** upper edge of skirt in direction of arrows.



35. Open out bodice lining. With RIGHT sides together, pin bodice to skirt, matching centers, notches and seams, clipping skirt where necessary. Stitch. Trim close to stitching. Press seam toward bodice.



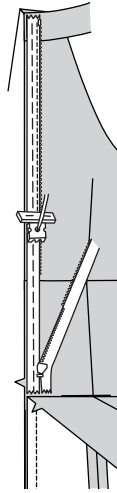
36. Stitch skirt back sections together at center back, leaving open from 1"(2.5cm) below notch to upper edge.



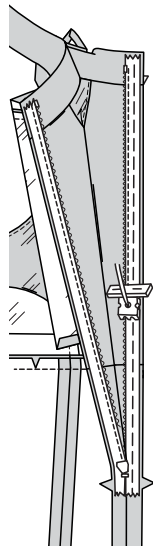
ZIPPER AND FINISHING

NOTE: Stitch the invisible zipper using an invisible zipper foot.

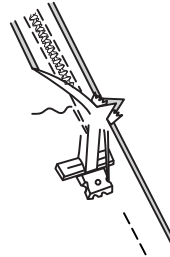
37. Open the zipper and press the tape using a cool iron. On OUTSIDE, pin RIGHT side of the zipper face down on the RIGHT side of the zipper opening, keeping lining and band facing free. Have the coil along the seam line, the tape within the seam allowance and the top stop 1/8"(3mm) below upper seam, as shown. Hand-baste along center of the tape. Position zipper foot at the top of the zipper with RIGHT groove of the foot over coil. Stitch along tape to the notch. Back-stitch to reinforce.



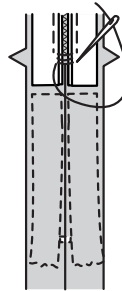
38. Pin the remaining half of the zipper to the LEFT side of the zipper opening having the top-stop 3/4"(2cm) from upper raw edge. Hand-baste along the center of the tape. Position zipper foot at the top of the zipper with LEFT groove over the coil. Stitch along tape to the notch. Back-stitch to reinforce.



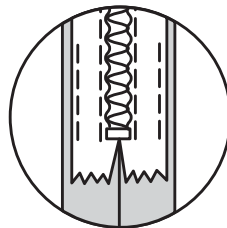
39. Close zipper and check that it is invisible from the OUTSIDE. Pull the free ends of the zipper tape away from the seam allowance. Pin remaining back seam together below zipper. Position zipper foot all the way to the LEFT so the needle goes down through the outer notch of the foot. Start stitching seam 1/4"(6mm) above lowest stitch and slightly to the LEFT. Stitch remainder of seam, connecting with previous stitching.



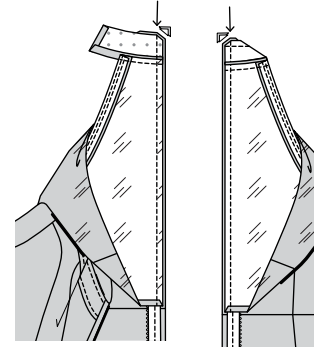
40. If the zipper is longer than the opening, using a strong thread, hand-sew a few small stitches across ends of coils at end of opening. Trim away lower end of zipper tape to within 5/8"(1.5cm) of hand-stitches.



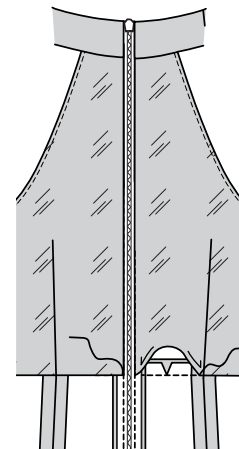
41. If you prefer, open out each seam allowance at ends of zipper and stitch tape to seam allowance.



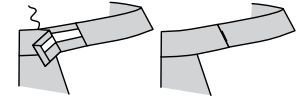
42. Open out back opening edges of dress, rolling the zipper teeth away from the opening edge. Pin back opening edges together. Using an adjustable zipper foot, stitch 1/2"(1.3cm) from back edges, keeping zipper teeth free. Do not trim side edges.



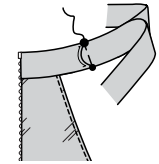
43. Turn lining and center back edges to INSIDE, rolling zipper teeth back in place; press. SLIPSTITCH lower pressed edge of lining over seam, as shown.



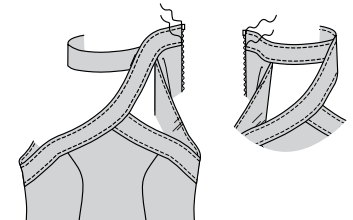
44. Turn in remainder of seam allowances on right hand and band facing edges, as shown. Turn in 3/8"(1cm) seam allowance on upper edge of band facing. Press. SLIPSTITCH pressed edges together.



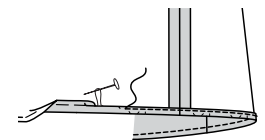
45. Insert end of neck band into right band opening, as shown, matching symbols. SLIPSTITCH pressed edge to neck band.
TIP: Stitch in the ditch of band seams to hold layers in place.



VIEW A:
46. TOPSTITCH right front band, as shown, keeping neck band free. TOPSTITCH neck band, keeping right front band free.



VIEWS A, B:
47. Stitch 1/4"(6mm) from lower edge of dress, using long machine stitches. Turn up 5/8"(1.5cm) hem, turning in 1/4"(6mm) on raw edge. Pull thread to ease in fullness. Stitch. Press.





Congrats!

You've completed your sewing adventure

SHARE YOUR LOOK



Post your pattern and tag us
[@simplicity_creative_group](#) and [#knowMepatterns](#)
for a chance to be featured on our social media.

Look for more PDF patterns at [simplicity.com](https://www.simplicity.com)

Have a question or need help with your sewing project call us at
1-800-782-0323

