



KEECHIB STYLE

**knowME**  
BY MIMI G

ME2082

Scan QR code  
for a Sew-Along  
video tutorial.



@keechibstyle

Designed and  
printed in USA

MISSES' AND WOMEN'S JUMPSUITS												Average	
<b>Suggested Fabrics:</b> Cotton Blends, Gabardine, Linen Blends, Satin, Silky Types. <b>Contrast B also in:</b> Brocade, Jacquard. <b>Lining:</b> Cotton Blends, Polyester Blends. <b>Interfacing:</b> Lightweight Fusible.													
<b>Notions: A,B:</b> One 16" (41cm) invisible zipper (cut to fit), 2 yds. (1.8m) of ¼" (6mm) featherweight boning (optional).													
Sizes	10	12	14	16	18	20W	22W	24W	26W	28W			
European	36	38	40	42	44	46	48	50	52	54			
<b>BODY MEASUREMENTS: Select pattern size based on body measurements</b>													
Bust	32½	34	36	38	40	42	44	46	48	50	Ins.		
Waist	25	26½	28	30	32	35	37	39	41½	44	"		
Hip-9" below waist	34½	36	38	40	42	44	46	48	50	52	"		
Back-neck to waist	16	16¼	16½	16¾	17	17¼	17¾	17½	17¾	17¾	"		
Lining A,B	45***	1	1	1	1	1¼	1¼	1¼	1¼	1¼	Yds.		
Interfacing A,B	20"	¾ yd.											
Jumpsuit A	60**	3¼	3¾	3½	3½	3¾	3¾	3¾	4	4¼	4½	Yds.	
Jumpsuit B	60**	3¼	3¼	3¼	3¾	3¾	4	4¼	4¼	4¾	4¾	Yds.	
<b>Contrast (Midriff Front, Side Front, Back, Side Back)</b>													
	45, 60**												
	½	½	½	¾	¾	¾	¾	¾	¾	¾	¾	Yd.	
<b>FINISHED GARMENT MEASUREMENTS (Includes Design and Wearing Ease)</b>													
A,B Bust	36	37½	39½	41½	43½	43	45	47	49	51	Ins.		
A,B Waist	28	29½	31½	33½	35½	36½	38½	40½	42½	44½	"		
A,B Hip	41	42½	44½	46½	48½	54	56	58	60	62	"		
Width, each leg													
Jumpsuit A,B	54	55½	56¾	58	59¾	62¾	64	65¾	66½	67¾	Ins.		
Finished back length from base of neck													
Jumpsuit A,B	58	58½	59	59½	60	59	59½	60	60½	61	Ins.		
*withnap **without nap													

Moins Facile

COMBINAISONS POUR JEUNES FEMMES ET FEMMES

Tissus Conseillés: Cotonnades, Gabardine, Lin mélangés, Satin, Tissus soyeux. **Contraste B aussi en:** Brocart, Jacquard. **Doublure:** Cotonnades, Mélanges de polyester. **Entoilage:** Thermocollant léger.

Mercerie: **A,B:** 1 fermeture à glissière invisible de 41 cm (coupée pour ajuster), 1.8m de baleine de poids très léger de 6mm (facultatif).

Tailles	10	12	14	16	18	20W	22W	24W	26W	28W
Françaises	38	40	42	44	46	48	50	52	54	56
Européen	36	38	40	42	44	46	48	50	52	54

MESURES DU CORPS: Choisissez la taille du patron basée sur les mesures du corps

Poitrine	83	87	92	97	102	107	112	117	122	127	cm
Taille	64	67	71	76	81	89	94	99	105	112	"
Hanches (23cm au-dessous de la taille)	88	92	97	102	107	112	117	122	127	132	cm
Dos du cou à la taille	40.5	41.5	42	42.5	43	44	44	44.5	45	45	"
Doublure A,B	115cm**	0.9	0.9	0.9	0.9	0.9	1.1	1.1	1.1	1.1	m
Entoilage A,B	51cm - 0.6m										

Combinaison A 150cm\*\* 3.0 3.1 3.1 3.2 3.3 3.4 3.5 3.7 3.9 4.1 m

Combinaison B 150cm\*\* 2.9 3.0 3.0 3.1 3.3 3.7 3.8 3.9 4.0 4.0 m

Contraste (Midriff Front, Side Front, Back, Side Back)

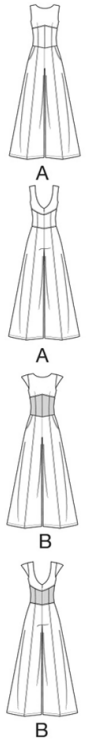
115, 150cm\*\*

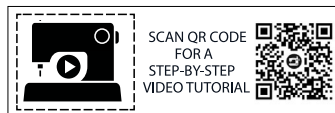
	0.5	0.5	0.5	0.5	0.5	0.6	0.6	0.6	0.6	0.6	m
--	-----	-----	-----	-----	-----	-----	-----	-----	-----	-----	---

MESURES DES VÊTEMENTS FINI (Motif et aisance de port compris)

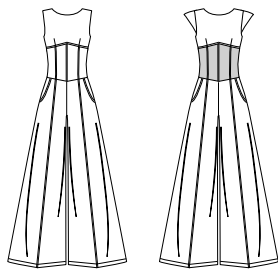
A,B Poitrine	91	95	100	105	110	109	114	119	124	130	cm
A,B Taille	71	75	80	85	90	93	98	103	108	113	"
A,B Hanches	104	108	113	118	123	137	142	147	152	157	"
Largeur, chaque jambe											
Combinaison A,B	137	141	144	147	150	159	163	166	169	172	cm
Longueur finie – dos, votre nuque à l'ourlet											
Combinaison A,B	147	149	150	151	152	150	151	152	154	155	cm

\*avec sens \*\*sans sens



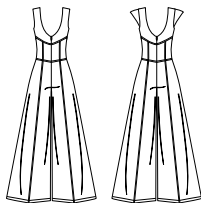


@keechiibstyle



A

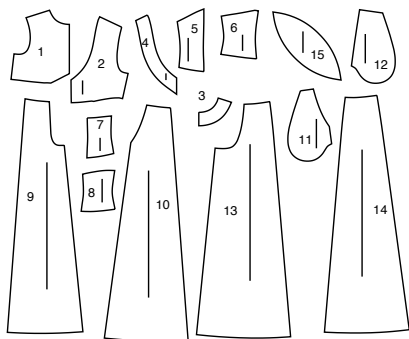
B



A

B

## 15 PATTERN PIECES

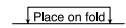


- 1 Bodice Front-A,B
- 2 Bodice Back-A,B
- 3 Front Facing-A,B
- 4 Back Facing-A,B
- 5 Midriff Front-A,B
- 6 Midriff Side Front-A,B
- 7 Midriff Back-A,B
- 8 Midriff Side Back-A,B
- 9 Pants Front-A,B
- 10 Pants Side Front-A,B
- 11 Pocket Facing-A,B
- 12 Side Front and Pocket-A,B
- 13 Pants Back-A,B
- 14 Pants Side Back-A,B
- 15 Flange-B

## PATTERN MARKINGS



**GRAINLINE:** Place on straight grain of fabric, parallel to selvage or fold.



**FOLDLINE:** Place line on fold of fabric.



**BUTTONHOLE MARKING:** Indicates exact length and placement of buttonholes.



**BUTTON MARKING:** Indicates button placement.



**NOTCHES AND SYMBOLS:** For matching seams and construction details.



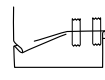
Indicates the Bustline, Waistline, Hip and/or Biceps. Measurements refer to circumference of Finished Garment (Body Measurement + Wearing Ease + Design Ease). Adjust pattern if necessary. The measurement excludes pleats, tucks, darts and seam allowances.

**SEAM ALLOWANCE:** 5/8" (1.5cm) included unless otherwise indicated, but not printed on tissue.

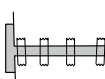
## ADJUST IF NECESSARY

Lengthen or Shorten at adjustment lines (==) or where indicated on pattern. If substantial length is added, you may need to purchase additional fabric.

**TO SHORTEN:** Crease along adjustment line. Make a fold half the amount needed. Tape in place.



**TO LENGTHEN:** Slash between adjustment lines. Spread amount as needed, keeping edges parallel. Tape over paper.



When Alteration lines are not on tissue, lengthen or shorten at lower edge.

## CUTTING AND MARKING

**SHRINK FABRIC** if not labeled pre-shrunk. Press.

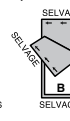
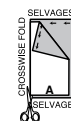
**CIRCLE LAYOUT** for View, Size, Fabric Width.

Use **WITH NAP** layout for fabrics with one-way designs, nap, pile or surface shading. Because most knits have surface shading, a with nap layout is used.

For **DOUBLE THICKNESS (WITH FOLD)** - fold fabric with right sides together.

**\* DOUBLE THICKNESS (WITHOUT FOLD)** - For fabrics with nap, fold fabric crosswise, right sides together. Mark as shown. Cut along crosswise fold of fabric (A). Turn upper layer 180° so arrows go in same direction and place over lower layer, right sides together (B).

For **SINGLE THICKNESS** - place fabric right side up. (For Fur Pile fabrics, place pile side down.)



★ Cut other pieces first, allowing enough fabric to cut this piece. Open fabric. For "Cut 1" pieces, cut piece once on single layer of fabric with piece face up on right side of fabric.

Pattern may have cutting lines for several sizes. Select the proper cutting line or pattern pieces for your size.

Before **CUTTING** place all pieces on fabric according to layout. Pin. (Layouts show approximate position of pattern pieces; position may vary according to your pattern size.) Cut **ACCURATELY**, cutting notches outward.

Before removing pattern, **TRANSFER MARKINGS** and lines of construction to Wrong Side of fabric, using the Pin and Chalk Pencil method or Tracing Paper and Dressmaker Wheel. Markings needed on right side of fabric should be thread traced.

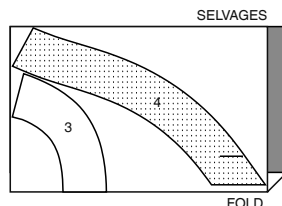
**NOTE:** Broken-line boxes (a! b! c!) in layouts represent pieces cut by measurements provided.

## CUTTING LAYOUTS

## INTERFACING A, B

use pieces: 3 4

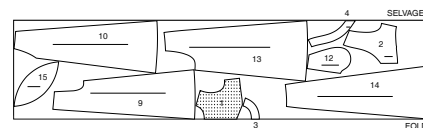
20" (51 cm)  
all sizes



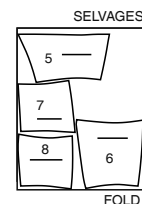
## JUMPSUIT B

use pieces: 1 2 3 4 9 10 12 13 14 15

60" (150 cm)  
with nap  
sizes 10 12 14 16 18



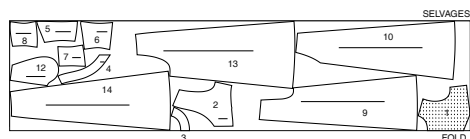
45" to 60" (115 cm to 150 cm)  
with nap  
sizes 20W 22W 24W 26W 28W



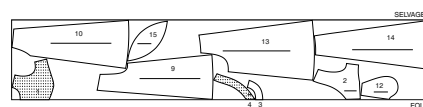
## JUMPSUIT A

use pieces: 1 2 3 4 5 6 7 8 9 10 12 13 14

60" (150 cm)  
with nap  
sizes 10 12 14 16 18



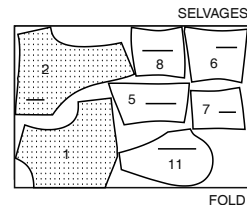
60" (150 cm)  
with nap  
sizes 20W 22W 24W 26W 28W



## LINING A,B

use pieces: 1 2 5 6 7 8 11

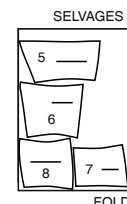
45" (115 cm)  
without nap  
sizes 10 12 14 16 18



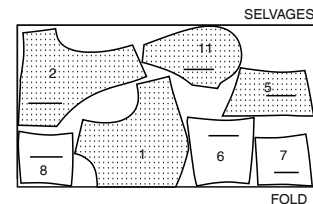
### CONTRAST B: LOWER SIDE FRONT, LOWER FRONT, LOWER BACK, LOWER SIDE BACK

use pieces: 5 6 7 8

45" to 60" (115 cm to 150 cm)  
with nap  
sizes 10 12 14 16 18

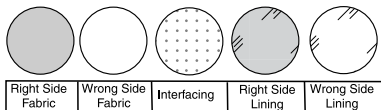


45" (115 cm)  
without nap  
sizes 20W 22W 24W 26W 28W



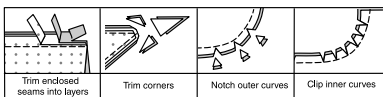
## SEWING INFORMATION

## FABRIC KEY



## SEAM ALLOWANCES

Use 5/8" (1.5cm) seam allowances unless otherwise indicated.



## PIN AND FIT

Pin or baste seams, **RIGHT SIDE TOGETHER**, matching notches. Fit garment before stitching major seams.

## PRESS

Press seam allowances flat; then open unless otherwise stated. Clip where necessary so they lie flat.

## GLOSSARY

Sewing terms appearing in **BOLD TYPE** in Sewing Instructions are explained below.

**FINISH** - Stitch 1/4" (6mm) from raw edge and finish with one of the following: (1) Pink OR (2) Overcast OR (3) Turn in along stitching and stitch close to fold OR (4) Overlock.

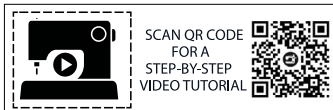
**OPTIONAL FOR HEMS:** Apply Seam Binding.

**REINFORCE** - Stitch along seamline where indicated in sewing instructions, using small machine stitches.

**SLIPSTITCH** - Slide needle through a folded edge, then pick up a thread of underneath fabric.

**TOPSTITCH** - On outside, stitch 1/4" (6mm) from edge, seam or previous stitching, using presser foot as guide, or stitch where indicated in instructions.

**UNDERSTITCH** - Open out facing or underside of garment; stitch to seam allowance close to seam.



@keechiibstyle

**PATTERN PIECES WILL BE IDENTIFIED BY NUMBERS THE FIRST TIME THEY ARE USED.**

**STITCH SEAMS WITH RIGHT SIDES TOGETHER UNLESS OTHERWISE STATED.**

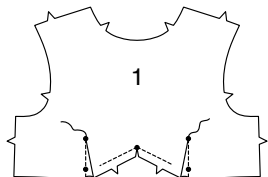
## SEWING DIRECTIONS

## JUMPSUIT A, B

**Note:** The first view mentioned will be shown in unless otherwise indicated.

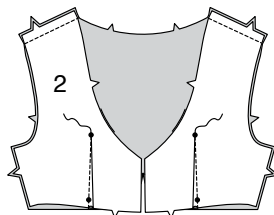
## BODICE FRONT AND BODICE BACK

**1. REINFORCE** inward corner of **BODICE FRONT** (1), pivoting at small dot on lower edge. Clip to small dot. Stitch darts in bodice front. Press darts towards center.



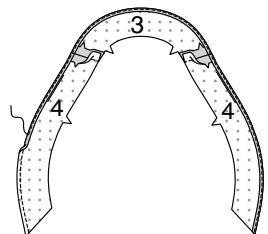
**2.** Stitch dart in **BODICE BACK** (2). Press dart toward center.

Stitch front to back at shoulders.

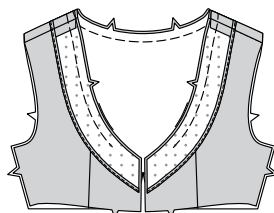


**3.** Fuse **INTERFACING** to **WRONG** sides of **FRONT FACING** (3) and **BACK FACING** (4) sections.

Stitch front facing to back facing at shoulders. **FINISH** outer edge.

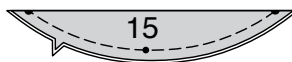


**4.** With **RIGHT** sides together, pin facing to bodice neckline matching centers, notches, and shoulder seams. Baste neck edge to within 2" (5cm) of back edges.

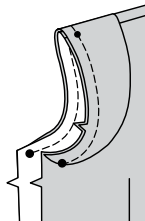


## VIEW B FLANGE

**5.** Fold **FLANGE** (15), **WRONG** sides together, along foldline, having raw edges even. Baste.

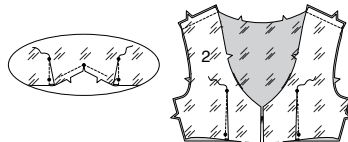


**6.** Pin flange to bodice armhole matching front notches, large dots, and small dot to shoulder seam. Baste.



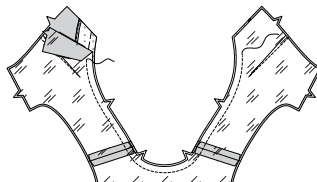
## BODICE LINING

**7. REINFORCE** inward corner of bodice front **LINING**, pivoting at small dot on lower edge. Stitch darts and seams in bodice **LINING** same as bodice.



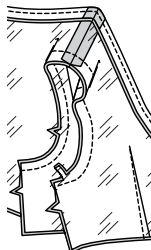
**8.** Pin lining to bodice, **RIGHT** sides together (over facings), matching notches and shoulder seams. Stitch neck edges to within 2" (5cm) of back edges. The remaining back neck edge will be stitched after the zipper is inserted.

**NOTE:** For clarity, finishing on neck facing will not be shown in following illustrations.



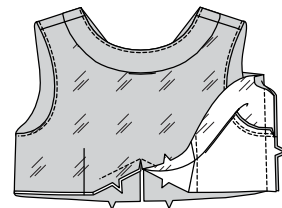
**9. UNDERSTITCH** neck edge of lining to within 3" (7.5cm) if back edges. With **RIGHT** sides together, pin lining to bodice along armhole edges. Stitch armhole seams. Trim.

Turn **RIGHT** side out, pulling each back through front at shoulder seams.



**10. UNDERSTITCH** armhole edge of lining as far as possible. Open out lining at sides. Pin front to back at sides and lining edges together matching notches as armhole seams. Stitch in one continuous seam.

Turn lining down. Press.

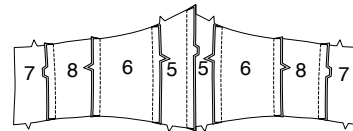


## MIDRIFF

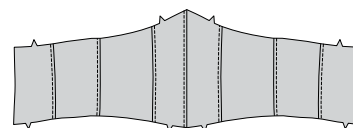
**11.** Stitch center front seam in **MIDRIFF FRONT** (5). Press seam toward right front. Stitch midriff front to **MIDRIFF SIDE FRONT** (6) at side front edge, matching notches. Press seam towards front.

Stitch **MIDRIFF BACK** (7) to **MIDRIFF SIDE BACK** (8) at side back edges, matching notches. Press seam towards back.

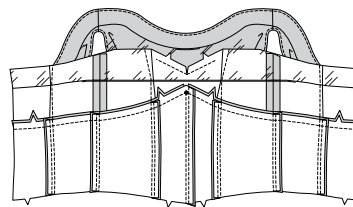
Stitch midriff side front to midriff side back at sides. Press seam toward back.



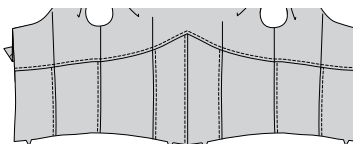
**12.** On **OUTSIDE**, **TOPSTITCH** seams catching in seam allowances.



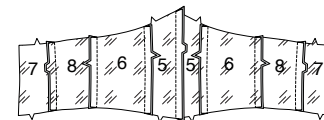
**13.** Open out bodice lining. Pin midriff to bodice matching centers, notches, side seams, and remaining seams to darts. Stitch, keeping bodice lining free.



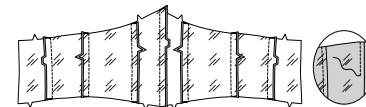
**14.** On **OUTSIDE**, **TOPSTITCH** bodice, keeping lining free.



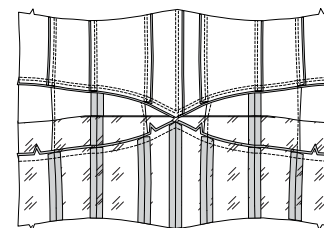
**15.** Stitch midriff **LINING** sections together in same manner as midriff.



**16. OPTIONAL BONING:** To create boning channels, press lining seam allowances towards centers, pressing side seams toward back and center front seam towards left front. **TOPSTITCH** lining seams 3/8" (1cm) from seamline, catching in seam allowances.



**17.** Pin midriff lining to lower edge of bodice lining matching centers, notches, side seams and remaining seams to darts. Stitch, keeping garment free.

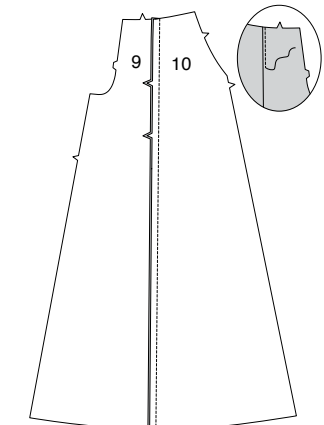


**18. OPTIONAL BONING:** Open out pressed edge of lining. Cut and label a piece of boning the length of each boning channel, minus 1-1/2" (3.8cm). Round ends of boning. Insert each piece of boning into its boning channel. Baste lower edges across boning casings. **NOTE:** Boning will not be shown in following illustrations.

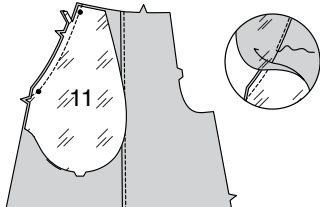


## PANTS

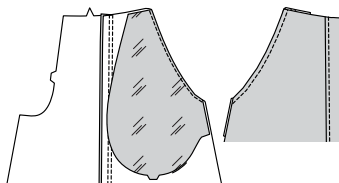
**19.** Stitch **PANTS FRONT** (9) to **PANTS SIDE FRONT** (10) at side front edge, matching notches. Turn seam toward front. **TOPSTITCH** front.



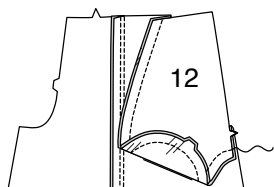
**20.** Pin POCKET FACING (11) to pants side front, RIGHT sides together, matching notches and small dots. Stitch. Trim. **UNDERSTITCH** pocket facing.



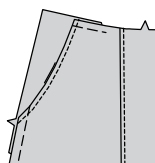
**21.** Turn pocket facing to inside. Press. **TOPSTITCH** finished side edge of side front.



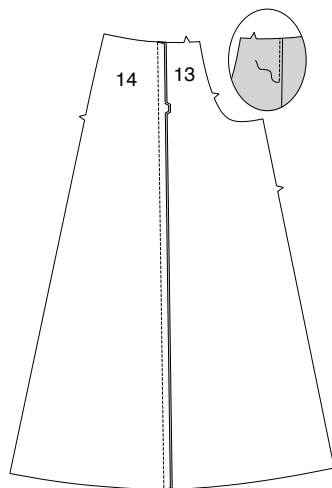
**22.** Stitch SIDE FRONT AND POCKET (12) to pocket facing along outer edge, keeping front free.



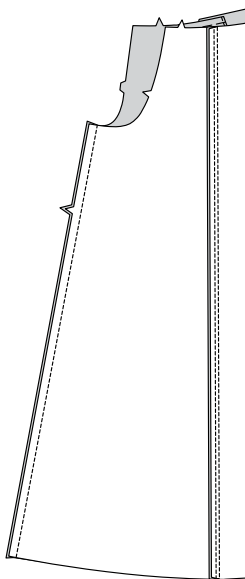
**23.** Baste upper and side edges.



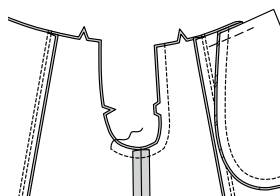
**24.** Stitch PANTS BACK (13) to PANTS SIDE BACK (14) at side back edge, matching notches. Turn seam toward back. Press. **TOPSTITCH** back.



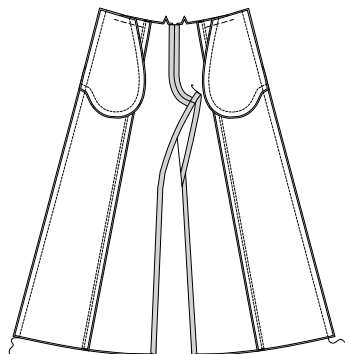
**25.** Stitch back to front at inner leg seams.



**26.** Stitch crotch seam from upper edge of front to 3"(7.5cm) below single notch on back.

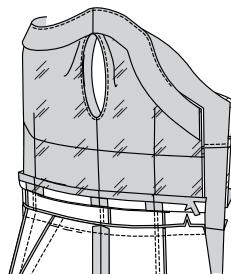


**27.** Stitch front to back at sides.



**28.** Pin lower edge of midriff to upper edge of pants, RIGHT sides together, matching centers, notches, and seams. Stitch, keeping lining free. Trim. Press seam toward midriff.

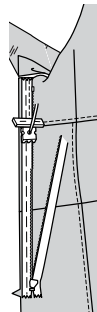
Turn under 5/8"(1.5cm) on lower edge of midriff lining. Press. Trim pressed edge to 3/8"(1cm).



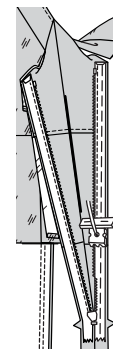
### INVISIBLE ZIPPER

**NOTE:**Stitch the invisible zipper using an invisible zipper foot. If the zipper is longer than the zipper opening, adjust after the zipper is inserted.

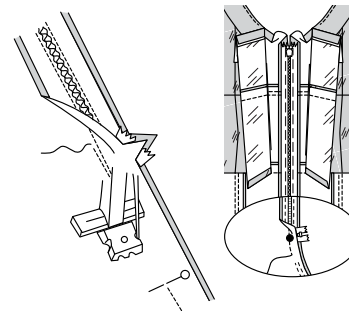
**29.** Open the zipper and press the tape using a cool iron. Keep the free upper edge of back lining and facing out of the way. On OUTSIDE, pin RIGHT side of the zipper face down on the RIGHT side of the zipper opening. Have the coil along the seam line, the tape within the seam allowance and the top stop 3/4"(2cm) below upper edge, as shown. Hand-baste along center of the tape. Position zipper foot at the top of the zipper with RIGHT groove of the foot over coil. Stitch along tape to the notch. Back-stitch to reinforce.



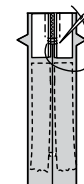
**30.** Pin the remaining half of the zipper to the LEFT side of the zipper opening in same manner. Make sure the upper and lower edges of the garment are even. Hand-baste along the center of the tape. Position zipper foot at the top of the zipper with LEFT groove over the coil. Stitch along tape to the notch. Back-stitch to reinforce.



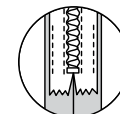
**31.** Close zipper and check that it is invisible from the OUTSIDE. Pull the free ends of the zipper tape away from the seam allowance. Pin remaining center back seam together below zipper. Position zipper foot all the way to the LEFT so the needle goes down through the outer notch of the foot. Start stitching seam 1/4"(6mm) above lowest stitch and slightly to the LEFT. Stitch remainder of seam, connecting with previous stitching. Stitch again 1/4"(6mm) away in seam allowance between notches. Trim close to second stitching.



**32.** If the zipper is longer than the opening, using a strong thread, hand-sew a few small stitches across ends of coils at end of opening. Trim away lower end of zipper tape to within 5/8"(1.5cm) of hand-stitches.

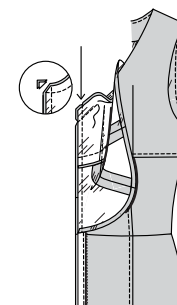


**33.** If you prefer, open out each seam allowance at end of zipper and stitch tape to seam allowance.



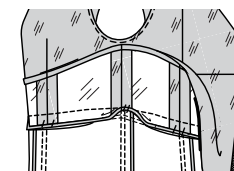
**34.** Open out back opening edge of dress, rolling the zipper teeth away from the opening edge. Turn back facing and lining to OUTSIDE and stitch remaining upper edges of back, facing, and lining together, connecting to previous stitching. Trim.

Pin back opening edges of facing, lining, and dress together. Stitch across lining 1/2"(1.3cm) from back edges, keeping zipper teeth free. Trim corners. Do not trim center back edges.

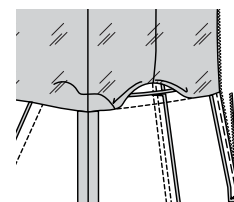


### FINISHING

**35.** Turn lining to INSIDE. Press. With WRONG sides together, tack the seam allowances of the bodice to bodice lining at midriff.

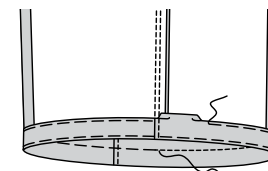


**36.** Turn down midriff lining. Pin pressed edge of lining over seam. **SLIPSTITCH** in place.



**37.** Turn up 1-1/4"(3.2cm) hem on lower edge of jumpsuit. Press. Baste close to fold. Turn in 1/4"(6mm) on raw edge of hem. Press. Baste close to upper pressed edge, easing in fullness, if necessary.

**TOPSTITCH** hem in place along upper basting, as shown.





# Congrats!

You've completed your sewing adventure

---

## SHARE YOUR LOOK



Post your pattern and tag us  
[@simplicity\\_creative\\_group](#) and [#knowMepatterns](#)  
for a chance to be featured on our social media.

Look for more PDF patterns at [simplicity.com](https://www.simplicity.com)

Have a question or need help with your sewing project call us at  
1-800-782-0323



KnowMe ©2023 a division of IG Design Group Americas Inc. • Atlanta, GA 30342 USA [www.thedesigngroup.com](http://www.thedesigngroup.com) • All Rights Reserved. [www.mccall.com](http://www.mccall.com) • Made in the U.S.A. Fabriqué aux États-Unis.  
To be used for individual private home use only and not for commercial or manufacturing purposes. • A usage privé seulement et non à des fins commerciales ou de production en série. • Para uso privado solamente, no se puede utilizar con propósitos de comercialización o de producción en serie.