



THE STITCH FITZ
knowME
BY MIMI G

ME2080



A
B

Scan QR code for a Sew-Along video tutorial.



@thestitchfitz

Designed and printed in USA

Average											
MISSES' DRESS AND HOODIE											
Suggested Fabrics: A in stretch knits only such as Activewear Knits, Four-Way Stretch, Spandex Blends. See Stretch Gauge. B in Double Knit, Ponte, Sweatshirt Fleece, Terry Knit.											
Notions: A: 1½ yds. (1.2m) of ½" (1.3cm) elastic, pair of ¾" (1cm) bra strap sliders and rings. B: One 18" (46cm) separating zipper (adjust to fit), 1½ yds. (1.9m) of ¾" - ½" (1cm - 1.3cm) twill tape or cording, two strips of 7" x 38" (18cm x 97cm) rib knit trim.											
Sizes	6	8	10	12	14	16	18	20	22	24	
European	32	34	36	38	40	42	44	46	48	50	
BODY MEASUREMENTS: Select pattern size based on body measurements											
Bust	30½	31½	32½	34	36	38	40	42	44	46	Ins.
Waist	23	24	25	26½	28	30	32	34	37	39	"
Hip-9" below waist	32½	33½	34½	36	38	40	42	44	46	48	"
Back-neck to waist	15½	15½	16	16¼	16½	16¾	17	17¼	17½	17¾	"
Dress A	60**	1½	1½	1½	1½	1½	1½	1½	1½	1½	Yds.
Hoodie B	60**	1½	1½	1½	1½	1½	1¾	1¾	1¾	1¾	Yds.
FINISHED GARMENT MEASUREMENTS (Includes Design and Wearing Ease)											
A Bust	28	29	30	31½	33½	35½	37½	39½	41½	43½	Ins.
B Bust	39½	40½	41½	43	45	47	49	51	53	55	"
A Waist	24	25	26	27½	29½	31½	33½	35½	37½	39½	"
B Waist	38	39	40	41½	43½	45½	47½	49½	51½	53½	"
A Hip	33½	34½	35½	37	39	41	43	45	47	49	"
A Hip (Shorts)	30	31	32	33½	35½	37½	39½	41½	43½	45½	"
Width, lower edge											
Dress A	35½	36½	37½	39	41	43	45	47	49	51	Ins.
Width, each leg											
Dress A (Shorts)	16¼	17	17¾	18¾	20	21¼	22½	23¾	25	26¼	Ins.
Finished back length from base of neck											
Dress A	28¾	29¼	29¾	30¾	30¾	31¼	31¾	32¼	32¾	33¼	Ins.
Hoodie B (incl. band)											
	20	20¼	20½	20¾	21	21¼	21½	21¾	22	22¼	Ins.

*with nap **without nap

Moins Facile

ROBE ET SWEAT-SHIRT À CAPUCHE POUR JEUNES FEMMES

Tissus Conseillés: A en tricot extensibles seulement tels que Tricot pour Vêtements de Sport, Tricot d'élasticité à quatre sens, Mélanges de élasthanne. B en Tricot double, Tricot ponte, Jersey molletonné pour sweat-shirt, Tricot éponge.

Mercerie: A: 1.2m d'élastique de 1.3cm, paire de régisseurs soutien-gorge de 1cm. B: 1 fermeture à glissière séparable de 46cm (adaptez pour ajuster), 1.9m de talonnette de coton ou de cordon de 1cm - 1.3cm, 2 bandes de 18cm x 97cm de galon de tricot à côtes.

Tailles	6	8	10	12	14	16	18	20	22	24
Françaises	34	36	38	40	42	44	46	48	50	52
Européen	32	34	36	38	40	42	44	46	48	50

MESURES DU CORPS: Choisissez la taille du patron basée sur les mesures du corps

Poitrine	78	80	83	87	92	97	102	107	112	117	cm
Taille	58	61	64	67	71	76	81	87	94	99	"
Hanches (23cm au-dessous de la taille)	83	85	88	92	97	102	107	112	117	122	cm
Dos du cou à la taille	39.5	40	40.5	41.5	42	42.5	43	44	44.5	45	"
Robe A	150cm*	1.4	1.4	1.4	1.4	1.4	1.6	1.7	1.7	1.7	m

Sweat-shirt à capuche B

150cm*	1.3	1.3	1.4	1.4	1.4	1.6	1.6	1.6	1.7	1.7	m
--------	-----	-----	-----	-----	-----	-----	-----	-----	-----	-----	---

MESURES DES VÊTEMENTS FINI (Motif et aisance de port compris)

A Poitrine	71	74	76	80	85	90	95	100	105	110	cm
B Poitrine	100	103	105	109	114	119	124	130	135	140	"
A Taille	61	64	66	70	75	80	85	90	95	100	"
B Taille	97	99	102	105	110	116	121	126	131	136	"
A Hanches	85	88	90	94	99	104	109	114	119	124	"
A Hanches (Short)	76	79	81	85	90	95	100	105	110	116	"
Largeur à l'ourlet											
Robe A	85	88	90	94	99	104	109	114	119	124	cm
Largeur, chaque jambe											
Robe A (Short)	90	93	95	99	104	109	114	119	124	130	cm
Longueur finie – dos, votre nuque à l'ourlet											
Robe A	73	74	76	77	78	79	81	82	83	84	cm
Sweat-shirt à capuche B (y compris la bande)	51	51	52	53	53	54	55	55	56	57	cm

*avec sens **sans sens



A



A



B



B

Use the 1 inch (2.54cm) box to ensure you are using rule at 100%

Utilisez la boîte de 2.54 cm pour vous assurer d'utiliser la règle à 100%.

Utilizar un cuadrado de 2.54 cm para asegurarse de estar usando la regla al 100%.

4" of crosswise folded fabric must STRETCH from here
10 cm de tricot plié sur le travers et sur le droit-fil doivent s'étirer de cette limite à celle là
10 cm de tejido de punto doblado (a lo largo y luego al través) deben estirarse desde acá

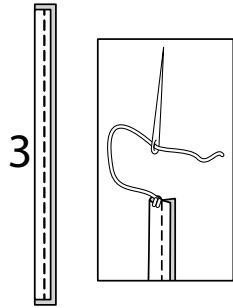
To Here 50%
jusqu'ici 50%
hasta acá 50%

When using the Pick-A-Knit® rule to measure your fabrics stretch capacity, rule must be viewed or printed at 100%.
Quand vous utilisez le taux d'élasticité pour mesurer la capacité d'élasticité des tissus, le taux doit être visible ou imprimé à 100%.
Al utilizar el calibre de elasticidad para medir la capacidad de elasticidad de las telas, el calibre debe estar visible o impreso al 100%.

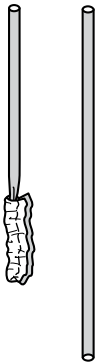
SEWING DIRECTIONS

DRESS A

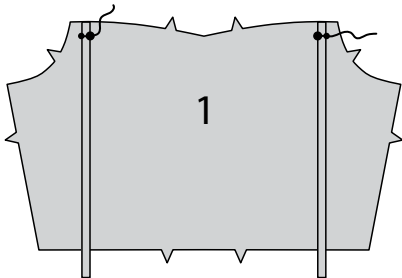
- 1.** Fold SHOULDER STRAP (3) in half, lengthwise, with right sides together. Stitch in a 1/4" (6mm) seam. With a needle, attach a strong thread to one end of strap.



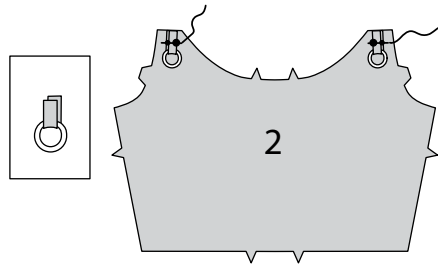
- 2.** Draw needle eye forward, through fold, turning strap right side out.



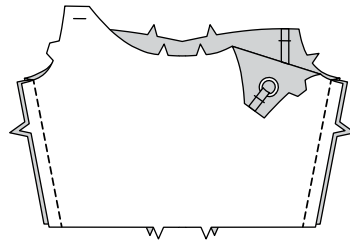
- 3.** On outside, pin ends to BODICE FRONT (1), matching small and large dots; baste.



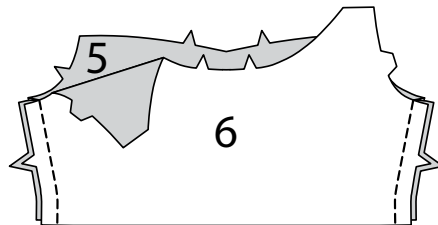
- 4.** Make LOOP (4) in the same manner as shoulder strap. Slide ring over one end. Fold strap in half. On outside, pin ends to BODICE BACK (2), matching small and large dots. Baste.



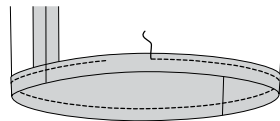
- 5.** Stitch bodice front to bodice back at side edges.



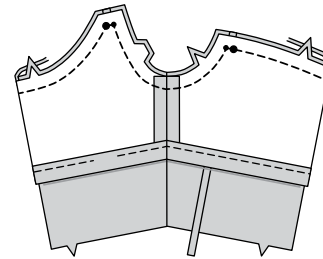
- 6.** Stitch FRONT STAY (5) to BACK STAY (6) at side edges.



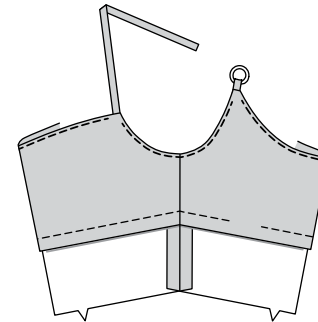
- 7.** Press up 7/8" (2.2cm) on lower edge of stay. Stitch 5/8" (1.5cm) from fold, leaving an opening to insert elastic.



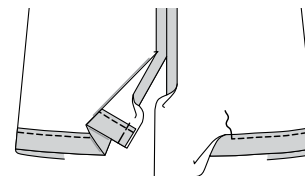
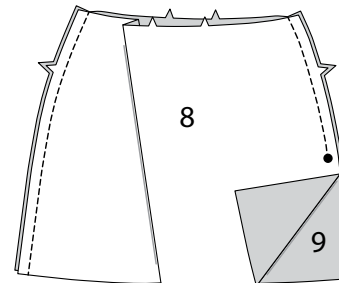
- 8.** With right sides together and raw edges even, pin stay to bodice, at upper and armhole edges, matching seams, dots, and notches. Stitch. Trim seam.



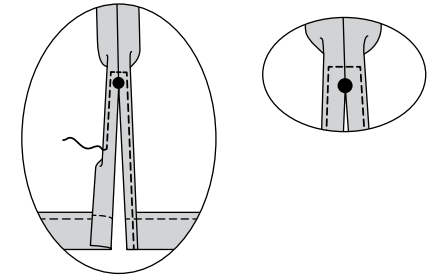
- 9.** UNDERSTITCH the stay at neck and armhole edges as far as possible. Turn stay to inside; press, pressing out straps and loops.



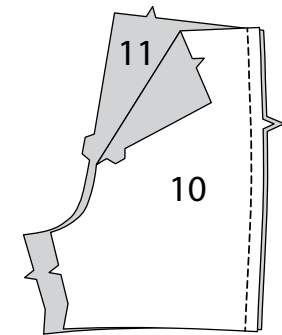
- 10.** Pin SKIRT FRONT (8) to SKIRT BACK (9) at side edges. On right side, stitch from upper edge to large dot, back-stitching at dot to reinforce the seam. Stitch left side to lower edge of skirt. Press up hem allowance on lower edge. Stitch 1" (2.5cm) from pressed edge.



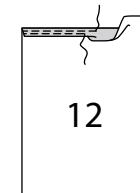
- 11.** NARROW HEM side opening edges, squaring stitching at opening end.



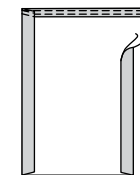
- 12.** Stitch SHORTS FRONT (10) to SHORTS BACK (11) at side edges.



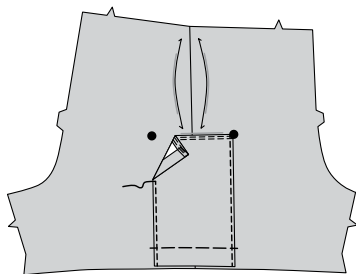
- 13.** Press under upper edge of POCKET (12) 5/8" (1.5cm). Stitch close to pressed edge and 1/4" (6mm) from first stitching.



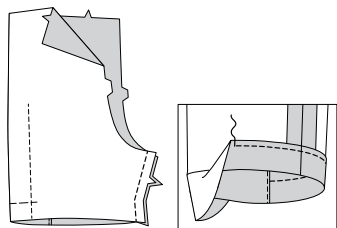
- 14.** Press under seam allowance on side edges of pocket.



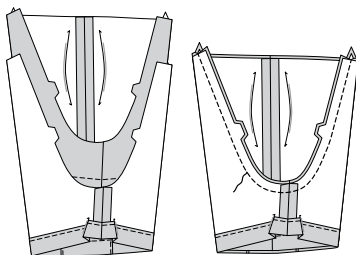
- 15.** On outside, pin pocket to right side shorts (over side seam), matching large dots and having raw edges even. Edge stitch pocket in place. Baste raw edges.



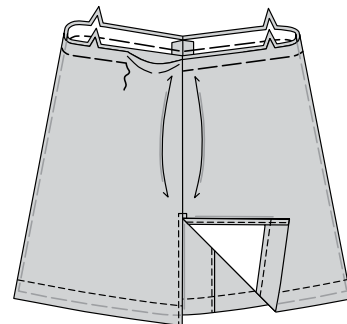
- 16.** Stitch inner leg edges of shorts. Press up hem allowance on lower edge. Stitch 1" (2.5cm) from pressed edge.



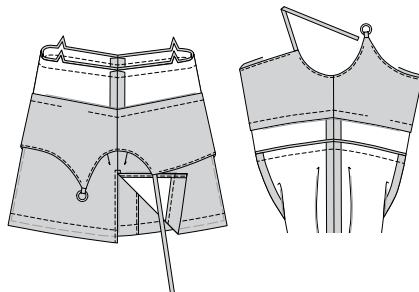
- 17.** With right sides together, insert one leg inside the other. Pin center seam, matching inner leg seams and notches. Stitch. To reinforce seam, stitch again over first stitching.



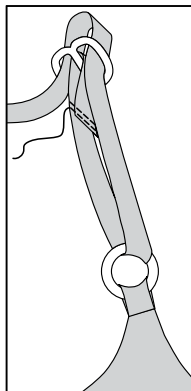
- 18.** Pin wrong side of skirt to right side of shorts, matching seams and notches. Baste raw edges.



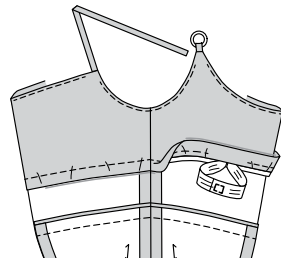
- 19.** With right sides together and raw edges even, pin skirt to bodice, matching seams and notches. Stitch through all thicknesses. Press seam toward bodice.



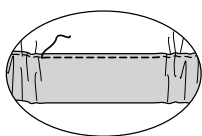
- 20.** To thread strap, weave end through outer bars of slider, through back ring, then wrap around center bar of slider 7/8" (2.2cm). Stitch 1/4" (6mm) from end. Stitch again 1/8" (3mm) from raw edge.



- 21.** Cut a piece of elastic the length the GUIDE FOR ELASTIC (7). Thread elastic through opening in stay casing, bringing ends together. Hold with a safety pin. Try on garment and adjust fit, if necessary. Stitch ends of elastic together, securely.

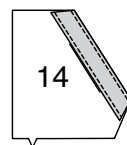


- 22.** Stitch opening closed.

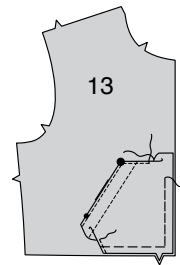


HOODIE B

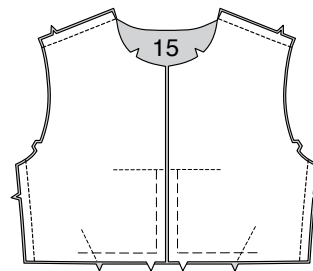
- 1.** Press under facing along foldline on POCKET (14). Stitch close to pressed edge and 1" (2.5cm) away.



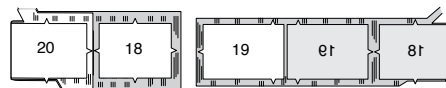
- 2.** Press under upper and back edge of pocket. Pin pocket to FRONT (13) along placement lines, matching small and large dots. Stitch in place close to upper and back edges. Baste raw edges together.



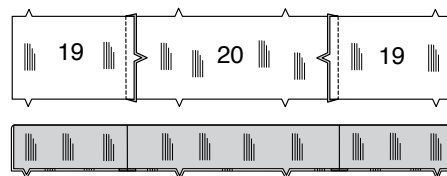
- 3.** Stitch fronts to BACK (15) at shoulder and side edges.



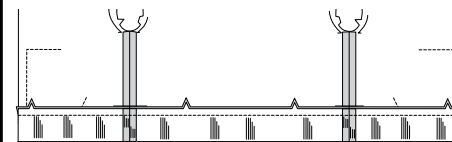
- 4.** Open out rib knit sections. Pin SLEEVE BAND (18), FRONT BAND (19), and BACK BAND (20) to knit strips, matching fold lines on pattern pieces to fold of trim. Transfer markings. **Note:** Be sure to place one each of pieces 18 and 19 FACE DOWN for left side of body. Cut out sections.



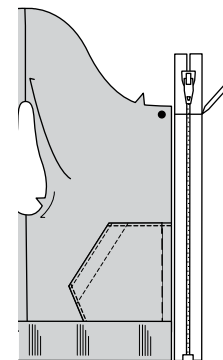
- 5.** Pin front band (19) sections to back band (20) at side edges. Stitch. Fold band in half, lengthwise, with wrong sides together. Pin. Piece 18 sections will be used later.



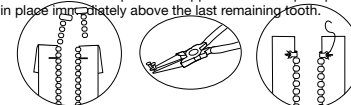
- 6.** With right sides together and raw edges even, pin band to garment, matching seams and notches. Stitch, stretching the band to fit. Press seam toward garment.



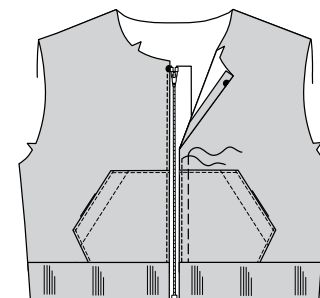
- 7.** To adjust the length of the separating zipper, shorten from the top. Measure front opening edge between large dot on front neck edge and lower edge of front band. Mark the length on the zipper tape, measuring from the lower edge of the bottom stop.



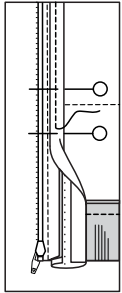
- 8.** Cut off extra zipper 1" (2.5cm) above mark, making sure that the zipper pull is well below cutting mark. Do not discard the pieces. Remove zipper teeth above mark. Using pliers pry the top-stops open and remove them from the discarded pieces of zipper. Reinstall top stops by crimping them in place immediately above the last remaining tooth.



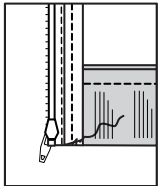
- 9.** On outside, press under 5/8" (1.5cm) on front edges. Align front sections, matching upper and lower edges. Pin closed zipper under opening edges with top stop at large dot, having front edges 1/4" (6mm) from center of zipper. Baste. Separate the zipper. Edge stitch front edges, using an adjustable zipper foot. Remove basting.



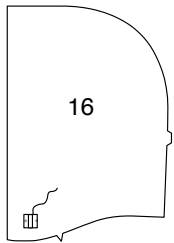
10. Cut a piece of bias tape the length of the front seam allowance. Open out front seam allowance. To encase it, slip seam allowance between the folds of the bias tape placing the raw edge against the center crease and the wider folded edge of the tape on the inside of the seam allowance. Using an adjustable zipper foot, stitch the tape in place on the outside of the seam allowance, being sure to catch in the folded edge on the inside.



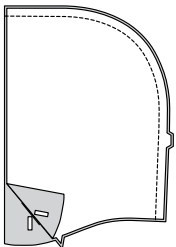
11. On inside, fold under lower edge of tape, diagonally. Tack in place.



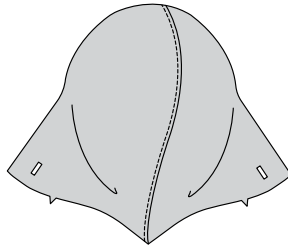
12. On inside, apply a 1" (2.5cm) square remnant of interfacing to HOOD (16) sections at buttonhole marking. Make buttonhole.



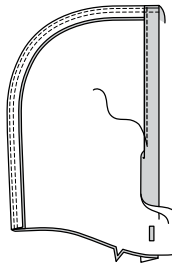
13. Stitch hood sections together at center edge. Press seam toward left side.



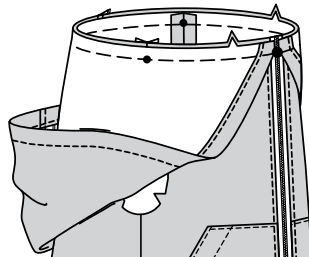
14. On outside, topstitch left side of hood 1/4" (6mm) away from seam.



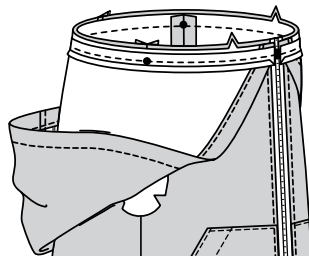
15. Press under front edge of hood along foldline. Turn under raw edge 1/4" (6mm). Stitch close to inner pressed edge.



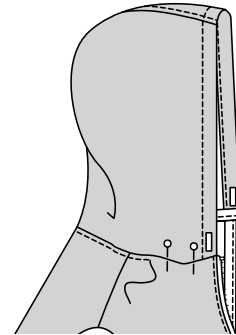
16. With right sides together and raw edges even, pin hood to garment, matching centers and large dots, placing small dot at shoulder seam. Baste.



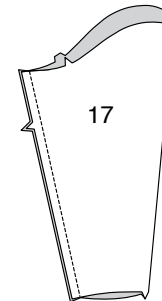
17. Cut a piece of bias tape the length of the neck edge, plus 3/8" (1cm). Open out center fold and one edge. Pin tape to neck edge of hood with center fold along basting. Stitch. Layer seam to 1/4" (6mm).



18. Press seam and binding toward garment and ends over the seam allowance. Pin; placing pins on outside. On outside topstitch a scant 1/4" (6mm) from seam, catching in binding on the inside.



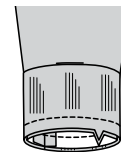
19. Stitch underarm seam of SLEEVE (17).



20. Stitch ends of sleeve band. Fold in half lengthwise; pin.

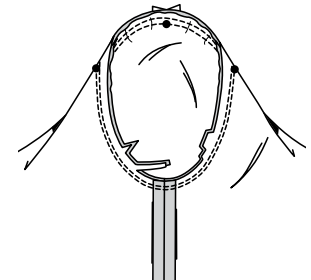


21. On outside pin sleeve band to sleeve, matching seams and notches. Stitch, stretching the band to fit. Press out band, pressing seam toward sleeve.

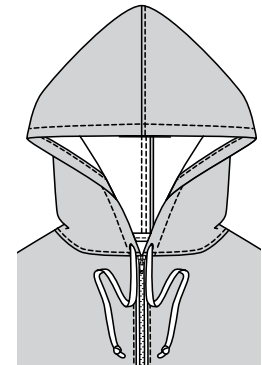


22. Turn sleeve right side out. Hold garment wrong side out with armhole toward you. With right sides together, pin sleeve to armhole edge with center small dot at shoulder seam, matching underarm seams, notches and remaining small dots.

Baste. Stitch. Stitch again 1/8" (3mm) from first stitching. Trim seam below notches close to stitching. Press only the seam allowance, shrinking out fullness.



23. To make drawstring for hood, cut a piece of twill tape or cording 64" (163cm) long. Attach a safety pin to one end of drawstring and thread through one buttonhole opening and out the other. Knot ends.





Congrats!

You've completed your sewing adventure

SHARE YOUR LOOK



Post your pattern and tag us
[@simplicity_creative_group](#) and [#knowMepatterns](#)
for a chance to be featured on our social media.

Look for more PDF patterns at [simplicity.com](https://www.simplicity.com)

Have a question or need help with your sewing project call us at
1-800-782-0323



KnowMe ©2023 a division of IG Design Group Americas Inc. • Atlanta, GA 30342 USA www.thedesigngroup.com • All Rights Reserved. www.mccall.com • Made in the U.S.A. Fabriqué aux États-Unis.
To be used for individual private home use only and not for commercial or manufacturing purposes. • A usage privé seulement et non à des fins commerciales ou de production en série. • Para uso privado solamente, no se puede utilizar con propósitos de comercialización o de producción en serie.