



JULIAN CREATES

know**ME**  
BY MIMI G

ME2079



Scan QR code  
for a Sew-Along  
video tutorial.



@juliancreates



Designed and  
printed in USA

MEN'S SHIRT AND PANTS											Average	
<b>Suggested Fabrics:</b> A: Chambray, Cotton Lawn, Cotton Blends, Linen Blends, Poplin, Rayon, Shirtings, Silky Types. B: Chino, Cotton Blends, Gabardine, Lightweight Stretch Wovens, Lightweight Twill, Lightweight Wool Blends, Linen Blends. <b>Lining:</b> Cotton Blends, Polyester Blends. <b>Interfacing:</b> Lightweight Fusible.												
<b>Notions:</b> A: Four ¾" (2cm) buttons, four ¾" (1.5cm) buttons. B: One 9" (23cm) zipper (cut to fit), one ¾" (1.5cm) button, one hook and bar.												
Sizes	38	40	42	44	46	48	50	52	54	56		
BODY MEASUREMENTS: Select pattern size based on body measurements												
Chest	38	40	42	44	46	48	50	52	54	56	Ins.	
Waist	28	30	36	39	42	44	46	48	50	52	"	
Hip	39	41	43	45	47	49	51	53	55	57	"	
Shirt A	45**	2¾	2¾	2¾	27½	27½	3	3	3	3¾	Yds.	
	60**	1¾	1¾	2	2	2	2¾	2¾	2¾	2¾	2¾	"
Interfacing A	20"	1¾	1¾	1¾	1¾	1¾	1¾	1¾	1¾	1¾	"	
Pants B	45**	3	3	3	3¾	3¾	3¾	3¾	3¾	3¾	Yds.	
	60**	2¾	2¾	2¾	2¾	2¾	2¾	3	3	3	"	
Lining B	45*** -	¾ yd.										
Interfacing B	20"	1¾	1¾	1½	1½	1¾	1¾	1¾	1¾	1¾	Yds.	
FINISHED GARMENT MEASUREMENTS (Includes Design and Wearing Ease)												
A Chest	46½	48½	50½	52½	54½	56½	58½	60½	62½	64½	Ins.	
A Waist	45½	47½	49½	51½	53½	55½	57½	59½	61½	63½	"	
B Waist	32	34	36	38	40	42	44	46	48	50	"	
B Hip	41	43	45	47	49	51	53	55	57	59	"	
Width, lower edge												
Shirt A		45½	47½	49½	51½	53½	55½	57½	59½	61½	63½	Ins.
Width, each leg												
Pants B		13½	14	14½	15	15½	16	16½	17	17½	18	Ins.
Finished back length from base of neck												
Shirt A		23¾	24	24¼	24½	24¾	25	25¼	25½	25¾	26	Ins.
Finished side length from waist												
Pants B		42¼	42½	42¾	43	43¾	43½	43¾	44	44¼	44½	Ins.
*with nap    **without nap												

\*with nap \*\*without nap

Moins Facile

CHEMISE ET PANTALON POUR HOMMES

Tissus Conseillés: A: Chambray, Linon de coton, Cottonnades, Toile de lin mélangés, Popeline, Rayonne, Shirtings, Tissus soyeux. B: Chino, Cottonnades, Gabardine, Tissus tissés extensibles légers, Twill léger, Mélanges de laine légère, Lin mélangés. Doublure: Cottonnades, mélanges de polyester. Entoilage: Thermocollant léger.

Mercerie: A: 4 boutons de 2cm, 4 boutons de 1.5cm. B: 1 fermeture à glissière de 23cm (coupée pour ajuster), 1 bouton de 1.5cm, 1 agrafe.

Tailles	38	40	42	44	46	48	50	52	54	56	
MESURES DU CORPS: Choisissez la taille du patron basée sur les mesures du corps											
Poitrine	97	102	107	112	117	122	127	132	137	142	cm
Taille	82	87	92	99	107	112	117	122	127	132	"
Hanches (23cm au-dessous de la taille)											
	99	104	109	115	119	124	128	135	140	145	cm
Chemise A	115cm*	2.5	2.5	2.5	2.6	2.6	2.6	2.7	2.7	2.9	m
	150cm*	1.7	1.7	1.8	1.8	1.8	2.2	2.2	2.2	2.3	"
Entoilage A	51cm	1.5	1.5	1.5	1.5	1.5	1.6	1.6	1.6	1.6	"
Pantalon B	115cm*	2.6	2.7	2.7	2.9	2.9	2.9	3.1	3.2	3.2	m
	150cm*	2.3	2.4	2.4	2.4	2.4	2.4	2.7	2.7	2.7	"
Doublure B	115cm** -	0.5m									
Entoilage B	51cm	1.3	1.3	1.4	1.4	1.5	1.5	1.6	1.6	1.7	m
MESURES DES VÊTEMENTS FINI (Motif et aisance de port compris)											
A Poitrine	118	123	128	133	138	144	149	154	159	164	cm
A Taille	116	121	126	131	136	141	146	151	156	161	"
B Taille	81	86	91	97	102	107	112	117	122	127	"
B Hanches	104	109	114	119	124	130	135	140	145	150	"
Largeur à l'ourlet											
Chemise A	116	121	126	131	136	141	146	151	156	161	cm
Largeur, chaque jambe											
Pantalon B	34	36	37	38	39	41	42	43	44	46	cm
Longueur finie – dos, votre nuque à l'ourlet											
Chemise A	60	61	62	62	63	64	64	65	65	66	cm
Longueur finie – côté, taille à l'ourlet											
Pantalon B	107	108	109	109	110	110	111	112	112	113	cm

\*avec sens \*\*sans sens

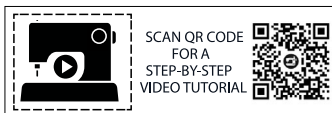
\*avec sens \*\*sans sens



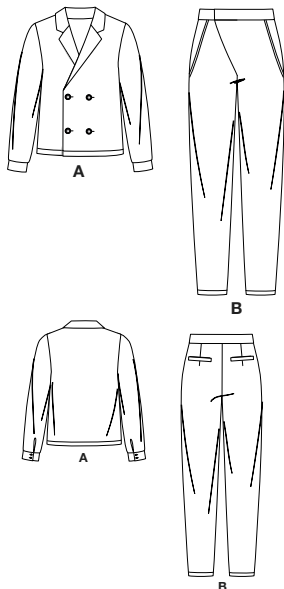
A



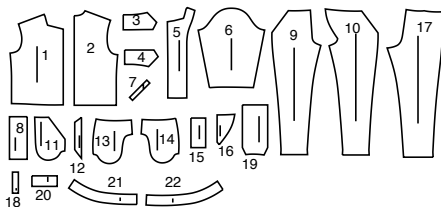
B



@juliancreates

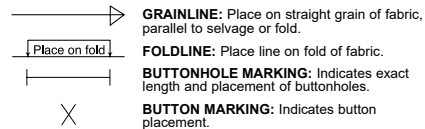


## 22 PATTERN PIECES



- |                    |                         |
|--------------------|-------------------------|
| 1 Front-A          | 12 Pocket Interfacing-B |
| 2 Back-A           | 13 Right Side Front-B   |
| 3 Upper Collar-A   | 14 Left Side Front-B    |
| 4 Under Collar-A   | 15 Right Fly-B          |
| 5 Front Facing-A   | 16 Left Fly Facing-B    |
| 6 Sleeve-A         | 17 Back-B               |
| 7 Continuous Lap-A | 18 Welt-B               |
| 8 Cuff-A           | 19 Back Pocket-B        |
| 9 Right Front-B    | 20 Back Pocket Facing-B |
| 10 Left Front-B    | 21 Right Waistband-B    |
| 11 Pocket Lining-B | 22 Left Waistband-B     |

## PATTERN MARKINGS



**GRAINLINE:** Place on straight grain of fabric, parallel to selvage or fold.

**FOLDLINE:** Place line on fold of fabric.

**BUTTONHOLE MARKING:** Indicates exact length and placement of buttonholes.

**BUTTON MARKING:** Indicates button placement.

**NOTCHES AND SYMBOLS:** For matching seams and construction details.

Indicates the Bustline, Waistline, Hip and/or Biceps. Measurements refer to circumference of Finished Garment (Body Measurement + Wearing Ease + Design Ease). Adjust pattern if necessary. The measurement excludes pleats, tucks, darts and seam allowances.

**SEAM ALLOWANCE:** 5/8" (1.5cm) included unless otherwise indicated, but not printed on tissue.

## ADJUST IF NECESSARY

Lengthen or Shorten at adjustment lines (==) or where indicated on pattern. If substantial length is added, you may need to purchase additional fabric.

**TO SHORTEN:** Crease along adjustment line. Make a fold half the amount needed. Tape in place.

**TO LENGTHEN:** Slash between adjustment lines. Spread amount as needed, keeping edges parallel. Tape over paper.

When Alteration lines are not on tissue, lengthen or shorten at lower edge.

## CUTTING AND MARKING

**SHRINK FABRIC** if not labeled pre-shrunk. Press.

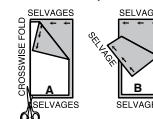
**CIRCLE LAYOUT** for View, Size, Fabric Width.

Use **WITH NAP** layout for fabrics with one-way designs, nap, pile or surface shading. Because most knits have surface shading, a with nap layout is used.

For **DOUBLE THICKNESS (WITH FOLD)** - fold fabric with right sides together.

**\*DOUBLE THICKNESS (WITHOUT FOLD)** - For fabrics with nap, fold fabric crosswise, right sides together. Mark as shown. Cut along crosswise fold of fabric (A). Turn upper layer 180° so arrows go in same direction and place over lower layer, right sides together (B).

For **SINGLE THICKNESS** - place fabric right side up. (For Fur Pile fabrics, place pile side down.)



★ Cut other pieces first, allowing enough fabric to cut this piece. Open fabric. For "Cut 1" pieces, cut piece once on single layer of fabric with piece face up on right side of fabric.

Pattern may have cutting lines for several sizes. Select the proper cutting line or pattern pieces for your size.

Before **CUTTING** place all pieces on fabric according to layout. Pin. (**Layouts show approximate position of pattern pieces; position may vary according to your pattern size.**) Cut **ACCURATELY**, cutting notches outward.

Before removing pattern, **TRANSFER MARKINGS** and lines of construction to Wrong Side of fabric, using the Pin and Chalk Pencil method or Tracing Paper and Dressmaker Wheel. Markings needed on right side of fabric should be thread traced.

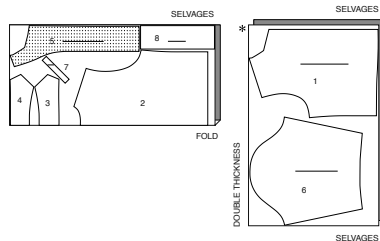
**NOTE:** Broken-line boxes (at bl cl) in layouts represent pieces cut by measurements provided.

## CUTTING LAYOUTS

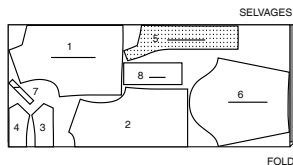
## SHIRT A

PIECES: 1 2 3 4 5 6 7 8

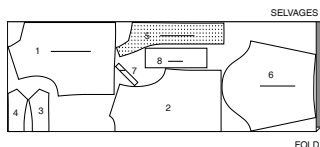
45" (115 CM)  
 WITH NAP  
 ALL SIZES



60" (150 CM)  
 WITH NAP  
 SIZES 38 40 42 44 46



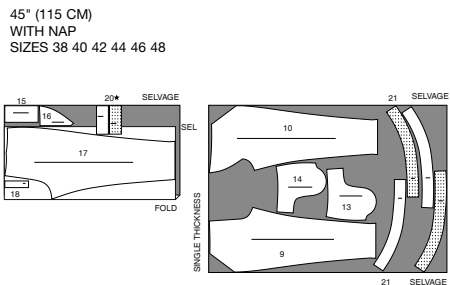
60" (150 CM)  
 WITH NAP  
 SIZES 48 50 52 54 56



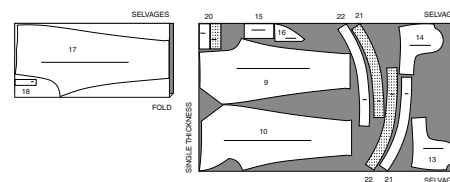
## PANTS B

PIECES: 9 10 13 14 15 16 17 18 20 21 22

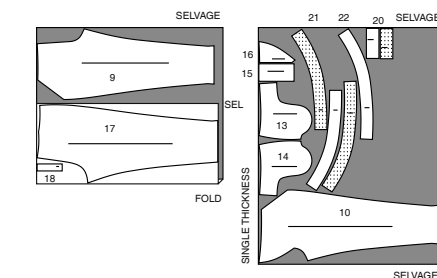
45" (115 CM)  
 WITH NAP  
 SIZES 38 40 42 44 46 48



45" (115 CM)  
 WITH NAP  
 SIZES 50 52 54 56



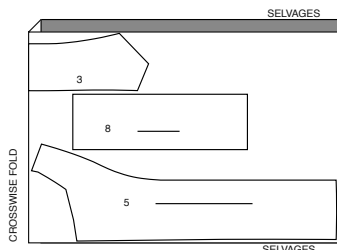
60" (150 CM)  
 WITH NAP  
 SIZES 38 40 42 44 46 48 50



## INTERFACING A

PIECES: 3 5 8

20" (51 CM)  
 ALL SIZES



## LINING B (POCKETS)

PIECES: 11 19

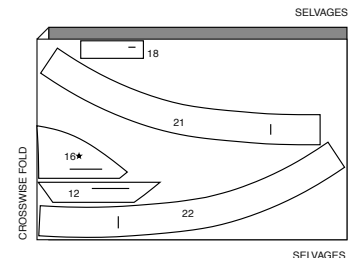
45" (115 CM)  
 WITH NAP  
 ALL SIZES



## INTERFACING B

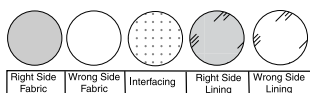
PIECES: 12 16 18 21 22

20" (51 CM)  
 ALL SIZES



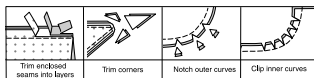
## SEWING INFORMATION

### FABRIC KEY



### SEAM ALLOWANCES

Use 5/8" (1.5cm) seam allowances unless otherwise indicated.



### PIN AND FIT

Pin or baste seams, **RIGHT SIDE TOGETHER**, matching notches. Fit garment before stitching major seams.

### PRESS

Press seam allowances flat; then open unless otherwise stated. Clip where necessary so they lie flat.

## GLOSSARY

Sewing terms appearing in **BOLD TYPE** in Sewing Instructions are explained below.

**DART** – To make dart, with **RIGHT** sides together, fold the fabric through the center of the dart, bringing broken lines and small dots together. On **INSIDE**, place pins at **RIGHT** angles to the broken lines. Stitch the dart from wide end to point.

**TIP** - To prevent a "bubble" at the point, make the last few stitches right on the fold and leave the thread ends long enough to tie a knot. **DO NOT** back-stitch at the point.

Press the dart flat along the stitching to "blend" the stitches, then press dart as indicated in the Sewing Directions.

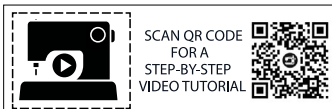
**EASE** – Loosen needle tension slightly. With **RIGHT** side up, stitch 5/8" (1.5cm) from cut edge using a long stitch. Stitch again 1/4" (6mm) from the first stitching within the seam allowance.

**EDGE FINISH** – Stitch 1/4" (6mm) from edge, turn under edge along stitching and stitch or zig-zag, or overlock/serge raw edges.

**REINFORCE** – Stitch along seamline where indicated in sewing instructions, using small machine stitches.

**STAYSTITCH** – Stitch 1/2" (1.3cm) from cut edge in direction of arrows. This stitching stays in permanently to prevent stretching on curved edges. (Shown only in the first illustration.)

**UNDERSTITCH** – Press facing and seam away from garment, stitching through facing and seam allowances close to seam.



SCAN QR CODE  
FOR A  
STEP-BY-STEP  
VIDEO TUTORIAL

@juliancreates

**PATTERN PIECES WILL BE IDENTIFIED BY NUMBERS THE FIRST TIME THEY ARE USED.**

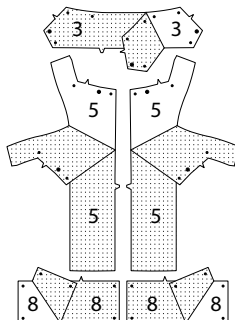
**STITCH 5/8" (1.5CM) SEAMS WITH RIGHT SIDES TOGETHER UNLESS OTHERWISE STATED.**

## SEWING DIRECTIONS

### SHIRT A

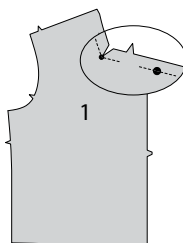
#### INTERFACING

**1.** Pin interfacing to wrong side of **UPPER COLLAR** (3), **FRONT FACING** (5), and **CUFF** (8) sections. Fuse, following manufacturer's instructions.

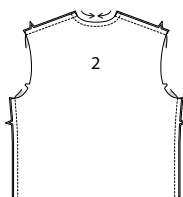


#### FRONT, BACK, COLLAR, AND FACING

**2.** To **REINFORCE** small dot on upper edge of **FRONT** (1), stitch along seam line for about 1" (2.5cm) each side of small and large dots, stitching through dots, as shown. Clip to reinforced small dot at inner corner, being careful not to clip through stitching.



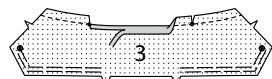
**3.** **STAYSTITCH** neck edge of **BACK** (2). Stitch front to back at shoulder and side edges. Press seams toward back.



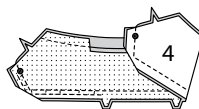
**4.** **EASE** upper edge of **UPPER COLLAR** (3) between large dots and notches. Machine-stitch 5/8" (1.5cm) from long, unnotched edge of collar.

Clip unnotched edge of collar to stitching at inner small dots.

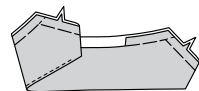
Press under 5/8" (1.5cm) on raw edge between clips. Trim to 1/4" (6mm).



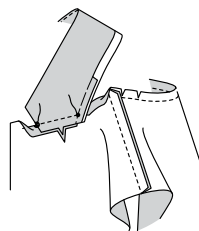
**5.** With right sides together, pin upper collar to **UNDER COLLAR** (4), matching large dots and notches, pulling up ease stitches to fit. Stitch double notched edge between large dots. Trim seam and corners.



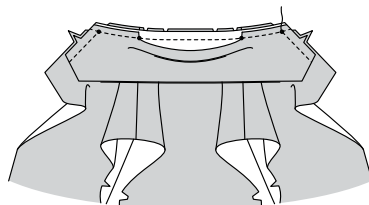
**6.** **UNDERSTITCH** the under collar. Turn collar; press. Baste raw edges together.



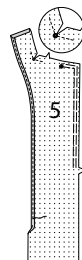
**7.** With right sides together, pin front edge of collar to front edge of shirt, matching small and large dots, having raw edges even. Stitch between small and large dots, back-stitching to reinforce. Clip back neck edge of shirt to stay-stitching along curves.



**8.** To stitch remaining neck edge, with right sides together pin collar to shirt, matching centers back and small dots, placing inner small dots at shoulder seams. Stitch, being careful not to catch in pressed edge upper collar.

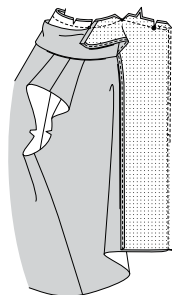


**9.** To **REINFORCE** small dot on upper edge of **FRONT FACING** (5), stitch along seam line for about 1" (2.5cm) each side of small dot, stitching through dot, as shown. Clip to reinforced small dot at inner corner, being careful not to clip through stitching. **EASE** upper and front edge from large dot to notch. **EDGE FINISH** long, unnotched edge. Press under shoulder edge along seamline; trim to 1/4" (6mm).

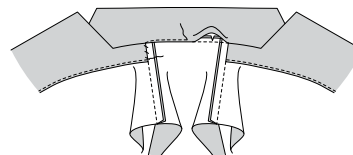


**10.** With right sides together, pin facing to front and neck edge, pulling up ease stitching to fit. Baste. Clip neck edge through all thicknesses at small and large dots.

Stitch front and neck edge as basted, being careful not to catch in free edge of collar. Trim seam and corners; clip curves.

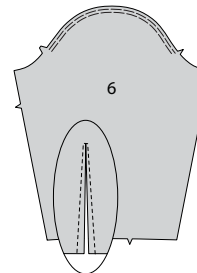


**11.** Turn facing to inside, turning back neck seam toward collar; press. Stitch pressed edge of upper collar over neck seam. Tack facing to shoulder seam allowances.



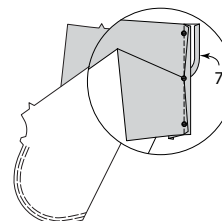
#### SLEEVE AND CUFF

**12.** **EASE** upper edge of **SLEEVE** (6) between the notches. Stitch along stitching lines on lower edge of sleeve, pivoting to take one small stitch across the point. Slash between stitching, being careful not to slash through the stitch at the point.

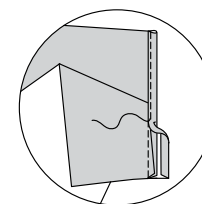


**13.** Press under 1/4" (6mm) on unmarked edge of continuous lap (7). Spread slashed edges of sleeve apart, forming a straight line. Pin right side of continuous lap to wrong side of slashed edges, matching stitching lines and small dots. Sleeve seam allowance will be 1/4" (6mm) at the ends, but taper close to nothing at the center dot.

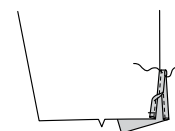
Stitch along stitching line. Press seam toward lap.



**14.** Pin pressed edge of lap to outside slightly over stitching. Stitch close to pressed edge.



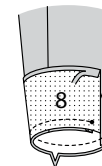
**15.** Turn front edge of lap to inside; baste in place across lower edge. To keep lap in place, stitch diagonally across upper edge of lap, as shown.



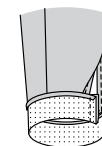
**16.** Stitch underarm edges of sleeve.



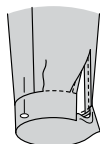
**17.** Press under 1/2" (1.3cm) on unnotched edge of **CUFF** (8). Trim to 1/4" (6mm). With right sides together, pin cuff to sleeve, matching notches, placing opening edges at small dots. Baste; stitch. Trim seam. Press seam toward cuff, pressing cuff out.



**18.** Fold cuff along foldline, with right sides together. Stitch ends. Trim seams.

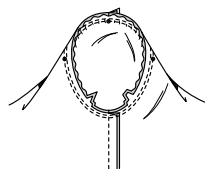


**19.** Turn cuff; press. On inside, pin pressed edge of cuff over seam, placing pins on outside. On outside, stitch in the ditch of the seam, catching in pressed edge of cuff on inside.



**20.** Turn sleeve right side out. Hold shirt wrong side out with armhole toward you. With right sides together, pin sleeve to armhole edge with center small dot at shoulder seam, matching underarm seams, notches and remaining small dots. Pull up ease stitches to fit.

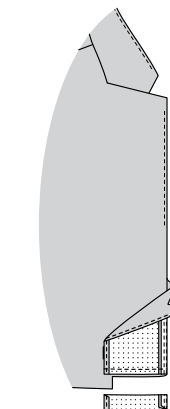
To distribute fullness evenly, slide fabric along bobbin threads until there are no puckers or tucks on the seam line. Baste. Stitch. Stitch again 1/8" (3mm) from first stitching. Trim seam below notches close to stitching. Press only the seam allowance, shrinking out fullness.



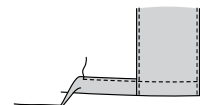
### FINISHING

**21.** UNDERSTITCH front edge of front from upper edge to roll line, and front facing from upper buttonhole marking to lower edge.

Turn facing to outside. Stitch across facing along 1-1/2" (3.8cm) hem marking. Trim facing close to stitching. Trim shirt to within 5/8" (1.5cm) of inner edge of facing.



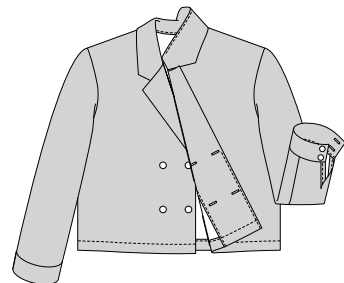
**22.** Turn facing to inside; press, pressing up hem along marking. Press under 1/4" (6mm) on raw edge. Stitch hem in place between opening edges.



**23.** Make buttonholes in left front at markings. Sew buttons to right front under buttonholes.

Make buttonholes on cuffs. Sew buttons to cuff at small dots.

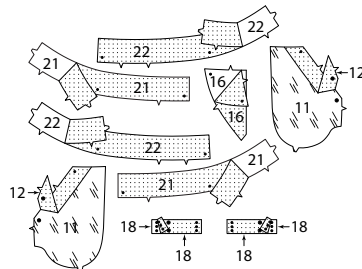
Turn lapel to outside along roll line, as shown on the envelope.



### PANTS B

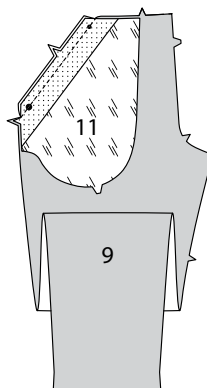
#### INTERFACING

**1.** Pin POCKET INTERFACING (12) sections to wrong side of POCKET LINING (11) sections. Pin interfacing to wrong side of LEFT FLY FACING (16), WELT (18), RIGHT WAISTBAND (21), and LEFT WAISTBAND (22) sections. Fuse, following manufacturer's instructions.

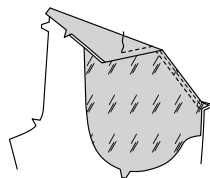


#### FRONT

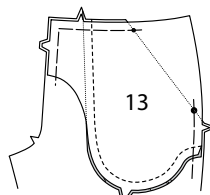
**2.** With right sides together and raw edges even, pin POCKET LINING (11) to RIGHT FRONT (9), matching small dots, large dots, and notches. Stitch single notched edge. Trim seam.



**3.** UNDERSTITCH lining. Turn lining to inside; press. On outside, topstitch 1/4" (6mm) from finished edge.

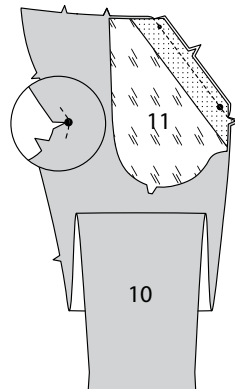


**4.** On inside, pin RIGHT SIDE FRONT (13) to pocket lining with right sides together, matching small dots, large dots, and notches. Stitch double notched, curved, edge. Baste front, side and upper edges together.

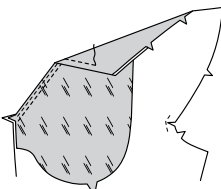


**5.** To REINFORCE large dot on center edge of LEFT FRONT (10), stitch along seam line for about 1" (2.5cm) each side of large dot, stitching through dot, as shown. Clip to dot, being careful not to clip through stitching.

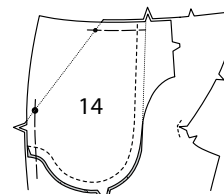
With right sides together and raw edges even, pin POCKET LINING (11) to left front, matching small dots, large dots, and notches. Stitch single notched edge. Trim seam.



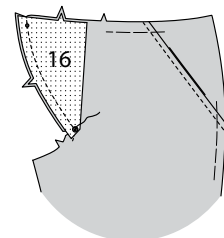
**6.** UNDERSTITCH the lining. Turn lining to inside; press. On outside, topstitch 1/4" (6mm) from finished edge.



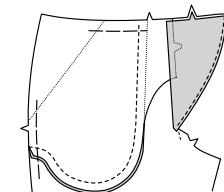
**7.** On inside, pin LEFT SIDE FRONT (14) to pocket lining with right sides together, matching small dots, large dots, and notches. Stitch double notched, curved, edge. Baste side edges together and upper edges to the notch.



**8.** With right sides together and raw edges even, pin LEFT FLY FACING (16) to left front, matching small dots, large dots and notches. Stitch front edge from upper edge to large dot, back-stitching at dot to reinforce the seam.

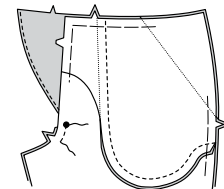


**9.** UNDERSTITCH the fly facing. Turn facing to inside; press.

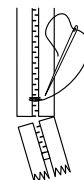


### ZIPPER

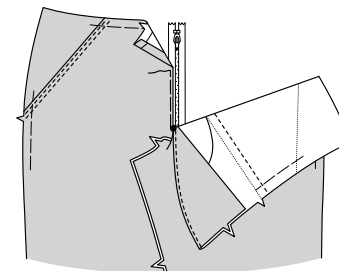
**10.** Stitch front sections together at center front between large dot and notch. Back-stitching to reinforce the seam.



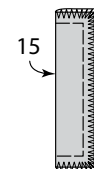
**11.** It may be necessary to shorten the length of the zipper. To make a new zipper stop, place zipper along opening edge with pull tab 1/8" (3mm) below seamline. Mark placement of new zipper stop. Whipstitch across teeth at marking. Cut zipper 3/4" (2cm) below the new stop.



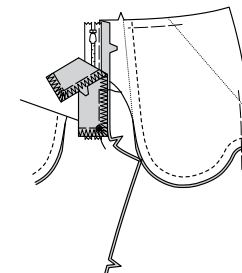
**12.** Turn under 5/8" (1.5cm) on right front opening edge along center line above large dot; press. Place closed zipper (face up) under right front, placing zipper stop at large dot and opening edge close to teeth. Using a zipper foot, baste close to edge above dot.



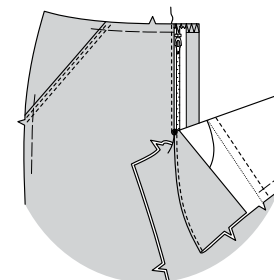
**13.** Fold RIGHT FLY (15) in half, lengthwise, with wrong sides together. Baste raw edges; **EDGE FINISH** with a zigzag or overlock stitch.



**14.** On inside, pin right fly to right front opening edge (over zipper), matching notches and large dots, having raw edges even. Baste along previous basting for zipper.

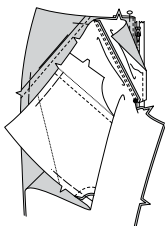


**15.** On outside, using a zipper foot, stitch close to pressed edge of front through all layers.

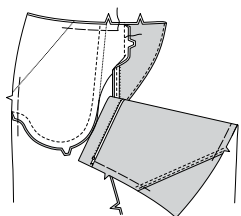




**16.** Pin right fly out of the way. Open out the left fly facing. Matching center fronts and large dots, pin fly facing to remaining side of zipper tape. Stitch above the large dot.

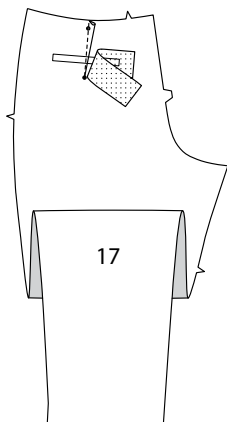


**17.** On inside, pin inner edge of left side front to seam allowance of front fly facing with right sides together, matching double notches. Stitch double notched edge in a 3/8" (1cm) seam. Baste raw edges of left side front to left front at upper edges.

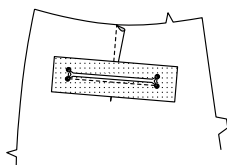


#### BACK

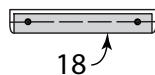
**18.** Make **DART** in BACK (17). Press toward center. To reinforce the back over small dots for pocket, cut a remnant of fusible interfacing 7" (18cm) long by 2" (5cm) wide. Center remnant over stitching lines and fuse in place.



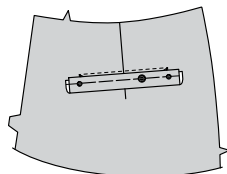
**19.** **REINFORCE** inner corners of back by stitching along stitching lines, pivoting at small dots. Slash along slash line, clipping diagonally to small dots.



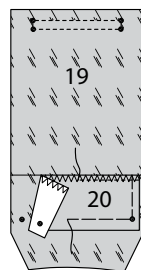
**20.** With wrong sides together, fold **WELT** (18) along foldline. Baste long edges together.



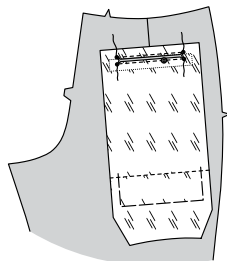
**21.** On outside, pin welt to back, placing basting along lower stitching line, matching small and large dots, as shown. Baste between small dots.



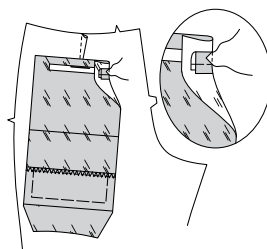
**22.** Finish long unmarked edge of **BACK POCKET FACING** (20) with a zigzag or overlock stitch. Pin the wrong side of the facing to the right side of **BACK POCKET** (19) along placement line, matching small dots. Stitch facing in place 1/4" (6mm) from inner edge. Baste upper and side edges together. **REINFORCE** inner corners of back pocket by stitching along stitching lines, pivoting at small dots.



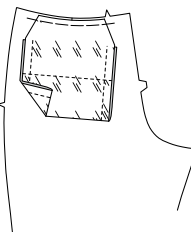
**23.** With right sides together, pin back pocket to back, over welt, matching large and small dots. Stitch along upper and lower stitching lines between the small dots. Slash pocket along slash line and diagonally to corners.



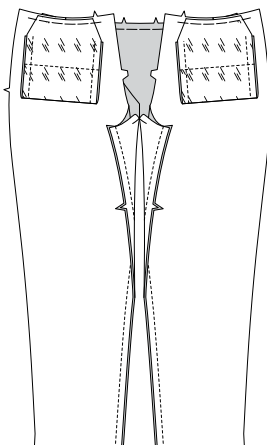
**24.** Turn pocket to inside; turn up welt. Bring triangular ends and welt ends to inside. Press. Stitch across ends.



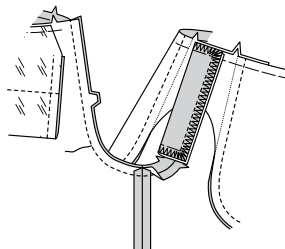
**25.** On inside, fold pocket along foldline with right sides together. Stitch side edges of pocket together. Baste upper edge of pocket to pants.



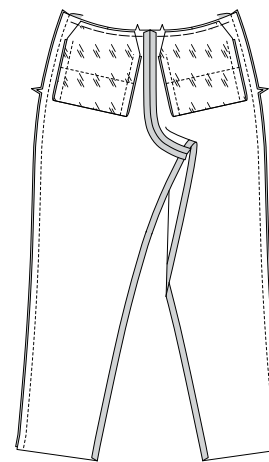
**26.** Stitch front to back at inner leg edges.



**27.** With right sides together, pin center seam, matching inner leg seams and notches. Stitch from upper back edge to front connecting to previous stitching. To reinforce seam, stitch again over first stitching.

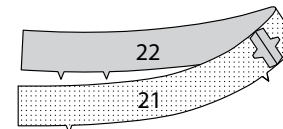


**28.** Stitch front to back at side edges. Press seam toward back.

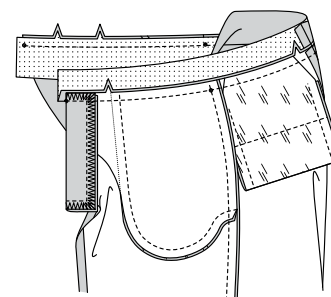


#### WAISTBAND

**29.** Stitch **RIGHT WAISTBAND** (21) and **LEFT WAISTBAND** (22) at center back edges.

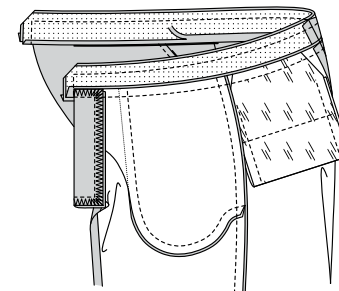


**30.** With right sides together and raw edges even, pin waistband to pants, matching centers, small dots, and notches, placing inner small dots at side edges and outer small dot to right front opening edge. Stitch. Trim seam. Press seam toward waistband, pressing waistband out.

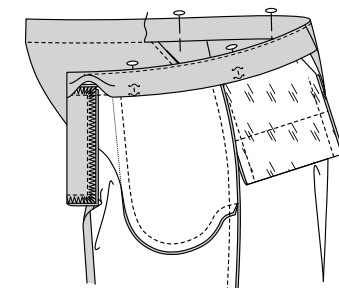


**31.** Stitch waistband facing sections together in the same manner as waistband. Press under notched edge 1/2" (1.3cm). Trim to 1/4" (6mm).

With right sides together and raw edges even, pin waistband facing to waistband, matching centers and seams. Stitch upper edge and ends. Trim seam.

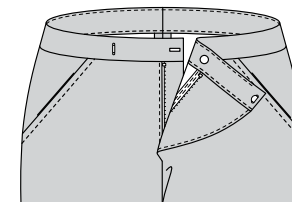


**32. UNDERSTITCH** the facing. Turn facing to inside; press, pressing out corners. On inside, pin pressed edge of facing over seam, placing pins on outside. On outside, stitch in the ditch of the seam, catching in pressed edge of facing on the inside.

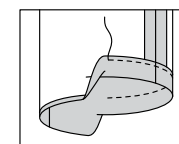


#### FINISHING

**33.** On inside, sew hook closure to left waistband over outer small dot and button at inner small dot. On outside, sew bar closure to right waistband at small dot. Make buttonhole at marking.



**34.** Press up hem allowance. Press under raw edge 1/4" (6mm). Stitch hem in place close to inner pressed edge.





# Congrats!

You've completed your sewing adventure

---

## SHARE YOUR LOOK



Post your pattern and tag us  
[@simplicity\\_creative\\_group](#) and [#knowMepatterns](#)  
for a chance to be featured on our social media.

Look for more PDF patterns at [simplicity.com](https://www.simplicity.com)

Have a question or need help with your sewing project call us at  
1-800-782-0323



KnowMe ©2023 a division of IG Design Group Americas Inc. • Atlanta, GA 30342 USA [www.thedesigngroup.com](http://www.thedesigngroup.com) • All Rights Reserved. [www.mccall.com](http://www.mccall.com) • Made in the U.S.A. Fabriqué aux États-Unis.  
To be used for individual private home use only and not for commercial or manufacturing purposes. • A usage privé seulement et non à des fins commerciales ou de production en série. • Para uso privado solamente, no se puede utilizar con propósitos de comercialización o de producción en serie.