



GWEN HENG
knowME
BY mimi g

ME2078



Scan QR code for a Sew-Along video tutorial.



@gwenheng_

Designed and printed in USA

Easy

Facile

MISSES' KNIT TOPS

Suggested Fabrics: Stretch Knits only such as: Interlock, ITY, Jersey, Rib Knit, Single Knit, Spandex Blends. See Stretch Gauge. **Contrast A:** Cotton Blends, ITY Knit, Wovens or Knit. **Interfacing:** Lightweight Fusible.

Notions: B: Six 3/8" (1cm) grommets, 1 1/4 yds. (1.2m) of 1/4" - 3/8" (6mm - 10mm) ribbon, twill tape or cord.

Sizes	6	8	10	12	14	16	18	20	22	24
European	32	34	36	38	40	42	44	46	48	50

BODY MEASUREMENTS: Select pattern size based on body measurements

Bust	30 1/2	31 1/2	32 1/2	34	36	38	40	42	44	46	Ins.
Waist	23	24	25	26 1/2	28	30	32	34	37	39	"
Hip-9" below waist	32 1/2	33 1/2	34 1/2	36	38	40	42	44	46	48	"
Back-neck to waist	15 1/2	15 3/4	16	16 1/4	16 1/2	16 3/4	17	17 1/4	17 1/2	17 3/4	"

Top A,B	60"	3/4	7/8	7/8	7/8	7/8	1 1/4	1 1/4	1 1/4	1 1/4	Yds.
Contrast A	60"	5/8	5/8	3/4	3/4	3/4	3/4	3/4	3/4	3/4	Yd.
Interfacing A	20"	7/8	1	1	1	1	1	1	1	1	"
Interfacing B	20"	1/2	1/2	1/2	1/2	1/2	1/2	1/2	1/2	1/2	"

FINISHED GARMENT MEASUREMENTS (Includes Design and Wearing Ease)

A,B Bust	30 1/2	31 1/2	32 1/2	34	36	38	40	42	44	46	Ins.
A,B Waist	27 1/2	28 1/2	29 1/2	31	33	35	37	39	41	43	"
Width, lower edge											
Top A,B	31 1/2	32 1/2	33 1/2	35	37	39	41	43	45	47	Ins.
Finished back length from base of neck											
Top A,B	21	21 1/4	21 1/2	21 3/4	22	22 1/4	22 1/2	22 3/4	23	23 1/4	Ins.

*with nap **without nap

HAUTS EN TRICOT POUR JEUNES FEMMES

Tissus Conseillés: Tricot extensibles seulement tels que: Interlock, Tricot interlock en fil retors, Jersey, Tricot à côtes, Tricot single, Mélanges de spandex. Reportez-vous au taux d'élasticité.

Contraste A: Cotonnades, Tricot interlock en fil retors, Tissus tissés ou tricot. **Entoilage:** Thermocollant léger.

Merceria: B: 6 œillets de 1cm, 1.2m de ruban, de talonnette de coton ou de cordon de 6mm - 10mm.

Tailles	6	8	10	12	14	16	18	20	22	24
Françaises	34	36	38	40	42	44	46	48	50	52
Européen	32	34	36	38	40	42	44	46	48	50

MESURES DU CORPS: Choisissez la taille du patron basée sur les mesures du corps

Poitrine	78	80	83	87	92	97	102	107	112	117	cm
Taille	58	61	64	67	71	76	81	87	94	99	"

Hanches (23cm au-dessous de la taille)

	83	85	88	92	97	102	107	112	117	122	cm
Dos du cou à la taille	39.5	40	40.5	41.5	42	42.5	43	44	44.5	45	"

Haut A,B	150cm*	0.7	0.7	0.7	0.8	0.8	0.8	1.1	1.1	1.1	1.1	m
Contraste A	150cm*	0.6	0.6	0.6	0.6	0.6	0.7	0.7	0.7	0.7	0.7	m
Entoilage A	51cm	0.8	0.8	0.8	0.9	0.9	0.9	0.9	0.9	0.9	0.9	"
Entoilage B	51cm	0.5m										

MESURES DES VÊTEMENTS FINI (Motif et aisance de port compris)

A,B Poitrine	77	80	83	86	91	97	102	107	112	117	cm
A,B Taille	70	72	75	79	84	89	94	99	104	109	"
Largeur à l'ourlet											
Haut A,B	80	83	85	89	94	99	104	109	114	119	cm
Longueur finie – dos, votre nuque à l'ourlet											
Haut A,B	53	54	55	55	56	57	57	58	58	59	cm

*avec sens **sans sens



A



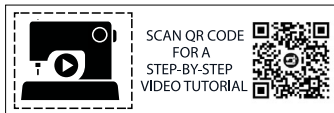
B

Use the 1 inch (2.54cm) box to ensure you are using rule at 100%
Utilisez la boîte de 2.54 cm pour vous assurer d'utiliser la règle à 100%.
Utilizar un cuadrado de 2.54 cm para asegurarse de estar usando la regla al 100%.

4" of crosswise folded fabric must STRETCH from here
10 cm de tricot plié sur le travers et sur le droit-fil doivent s'étirer de cette limite à celle là
10 cm de tejido de punto doblado (a lo largo y luego al través) deben estirarse desde acá

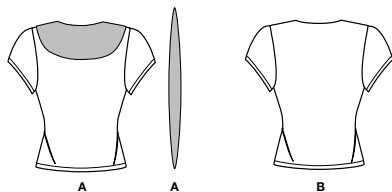
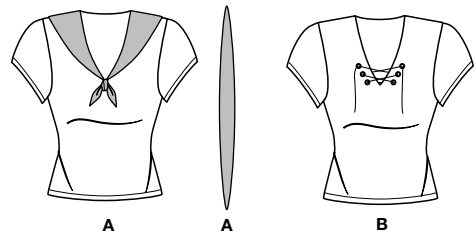
To Here 50%
jusqu'ici 50%
hasta acá 50%

When using the Pick-A-Knit® rule to measure your fabrics stretch capacity, rule must be viewed or printed at 100%.
Quand vous utilisez le taux d'élasticité pour mesurer la capacité d'élasticité des tissus, le taux doit être visible ou imprimé à 100%.
Al utilizar el calibre de elasticidad para medir la capacidad de elasticidad de las telas, el calibre debe estar visible o impreso al 100%.

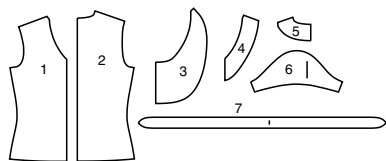


SCAN QR CODE
FOR A
STEP-BY-STEP
VIDEO TUTORIAL

@gwenstella.made



7 PATTERN PIECES



- 1 Front-A,B
- 2 Back-A,B
- 3 Collar-A
- 4 Front Neck Facing-A,B
- 5 Back Neck Facing-A,B
- 6 Sleeve-A,B
- 7 Tie-A

PATTERN MARKINGS

- GRAINLINE:** Place on straight grain of fabric, parallel to selvage or fold.
- FOLDLINE:** Place line on fold of fabric.
- BUTTONHOLE MARKING:** Indicates exact length and placement of buttonholes.
- BUTTON MARKING:** Indicates button placement.
- NOTCHES AND SYMBOLS:** For matching seams and construction details.
- Indicates the Bustline, Waistline, Hip and/or Biceps. Measurements refer to circumference of Finished Garment (Body Measurement + Wearing Ease + Design Ease). Adjust pattern if necessary. The measurement excludes pleats, tucks, darts and seam allowances.
- SEAM ALLOWANCE:** 5/8" (1.5cm) included unless otherwise indicated, but not printed on tissue.

ADJUST IF NECESSARY

- Lengthen or Shorten at adjustment lines (==) or where indicated on pattern. If substantial length is added, you may need to purchase additional fabric.
- TO SHORTEN:** Crease along adjustment line. Make a fold half the amount needed. Tape in place.
- TO LENGTHEN:** Slash between adjustment lines. Spread amount as needed, keeping edges parallel. Tape over paper.
- When Alteration lines are not on tissue, lengthen or shorten at lower edge.

CUTTING AND MARKING

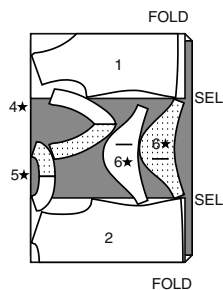
- SHRINK FABRIC** if not labeled pre-shrunk. Press.
- CIRCLE LAYOUT** for View, Size, Fabric Width.
- Use **WITH NAP** layout for fabrics with one-way designs, nap, pile or surface shading. Because most knits have surface shading, a with nap layout is used.
- For **DOUBLE THICKNESS (WITH FOLD)** - fold fabric with right sides together.
- * DOUBLE THICKNESS (WITHOUT FOLD)** - For fabrics with nap, fold fabric crosswise, right sides together. Mark as shown. Cut along crosswise fold of fabric (A). Turn upper layer 180° so arrows go in same direction and place over lower layer, right sides together (B).
- For **SINGLE THICKNESS** - place fabric right side up. (For Fur Pile fabrics, place pile side down.)
- ★ Cut other pieces first, allowing enough fabric to cut this piece. Open fabric. For "Cut 1" pieces, cut piece once on single layer of fabric with piece face up on right side of fabric.
- Pattern may have cutting lines for several sizes. Select the proper cutting line or pattern pieces for your size.
- Before **CUTTING** place all pieces on fabric according to layout. Pin. (Layouts show approximate position of pattern pieces; position may vary according to your pattern size.) Cut **ACCURATELY**, cutting notches outward.
- Before removing pattern, **TRANSFER MARKINGS** and lines of construction to Wrong Side of fabric, using the Pin and Chalk Pencil method or Tracing Paper and Dressmaker Wheel. Markings needed on right side of fabric should be thread traced.
- NOTE:** Broken-line boxes (a|b|c|) in layouts represent pieces cut by measurements provided.

CUTTING LAYOUTS

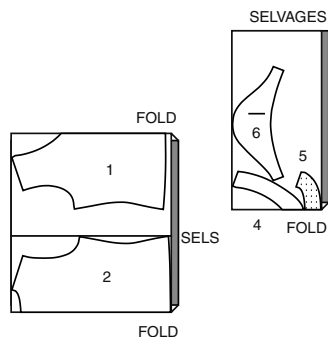
RIGHT SIDE OF PATTERN	WRONG SIDE OF PATTERN	RIGHT SIDE OF FABRIC	WRONG SIDE OF FABRIC
-----------------------	-----------------------	----------------------	----------------------

TOP A, B

PIECES: 1 2 4 5 6
60" (150 CM)
WITH NAP
SIZES 6 8 10 12 14 16

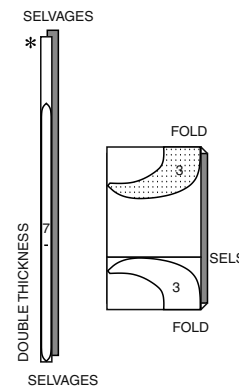


60" (150 CM)
WITH NAP
SIZES 18 20 22 24



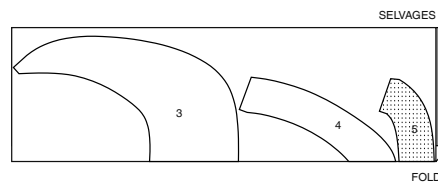
CONTRAST A (Collar, Tie)

PIECES: 3 7
60" (150 CM)
WITH NAP
ALL SIZES



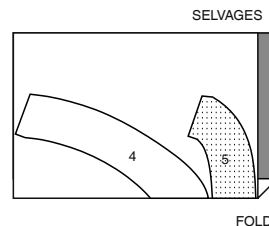
INTERFACING A

PIECES: 3 4 5
20" (51 CM)
ALL SIZES



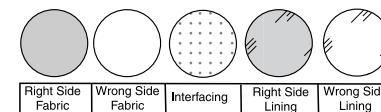
INTERFACING B

PIECES: 4 5
20" (51 CM)
ALL SIZES



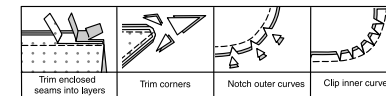
SEWING INFORMATION

FABRIC KEY



SEAM ALLOWANCES

Use 5/8" (1.5cm) seam allowances unless otherwise indicated.



PIN AND FIT

Pin or baste seams, **RIGHT SIDE TOGETHER**, matching notches. Fit garment before stitching major seams.

PRESS

Press seam allowances flat; then open unless otherwise stated. Clip where necessary so they lie flat.

GLOSSARY

Sewing terms appearing in **BOLD TYPE** in Sewing Instructions are explained below.

EASESTITCH - Stitch along seamline, using long machine stitches. Pull thread ends when adjusting to fit.

NOTE: For sleeve caps, make a second row of long machine stitches 1/4" (6mm) away in seam allowance. for more control.

FINISH - Stitch 1/4" (6mm) from raw edge and finish with one of the following: (1) Pink OR (2) Overcast OR (3) Turn in along stitching and stitch close to fold OR (4) Overlock.

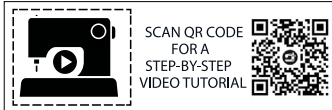
OPTIONAL FOR HEMS: Apply Seam Binding.

NARROW HEM - Turn in hem; press, easing in fullness if necessary. Open out hem. Turn in again so raw edge is along crease; press. Turn in along crease; stitch.

SLIPSTITCH - Slide needle through a folded edge, then pick up a thread of underneath fabric.

TOPSTITCH - On outside, stitch 1/4" (6mm) from edge, seam or previous stitching, using presser foot as guide, or stitch where indicated in instructions.

UNDERSTITCH - Open out facing or underside of garment; stitch to seam allowance close to seam.



@gwenstella.made

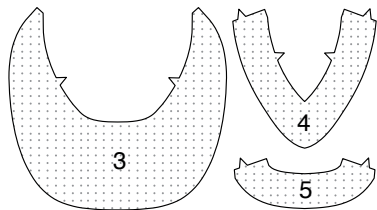
SEWING DIRECTIONS

TOP A, B

NOTE: Under each sub-heading, **View A** will be illustrated, unless otherwise indicated.

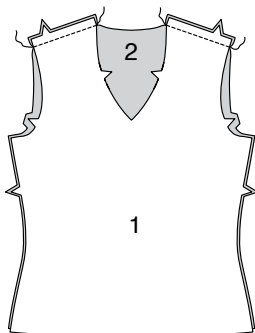
INTERFACING

1. Pin **INTERFACING** to wrong side of each matching **FABRIC** section. Fuse, following manufacturer's instructions.

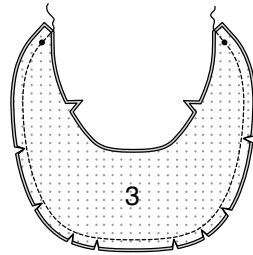


FRONT AND BACK

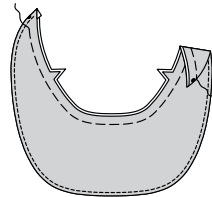
2. With right sides together, stitch **FRONT** (1) to **BACK** (2) at shoulder seams.



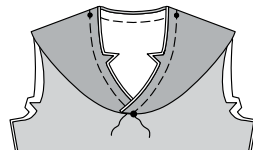
3. **VIEW A** - With right sides together, stitch **COLLAR** (3) sections together, leaving notched edge open. Trim seam, clip curves.



4. Turn collar right side out. Press. **UNDERSTITCH** collar facing. Baste raw edges together.

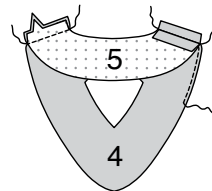


5. On outside, pin collar to neck edge (facing side down), matching large dots notches, placing small dots at shoulder seams. Baste.

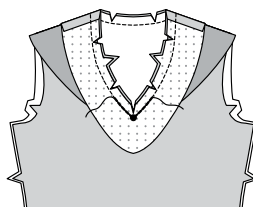


NECK FACING

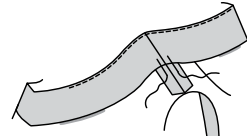
6. Stitch **FRONT NECK FACING** (4) to **BACK NECK FACING** (5) sections at shoulder seams. **FINISH** unnotched edge of facing.



7. With **RIGHT** sides together, pin facing to neck edge, matching centers and shoulder seams. Stitch along stitching lines on facing and along seam line, pivoting at large dot. To reinforce seam at center front, stitch over first stitching. Trim seam; clip curves and to stitching at center front.

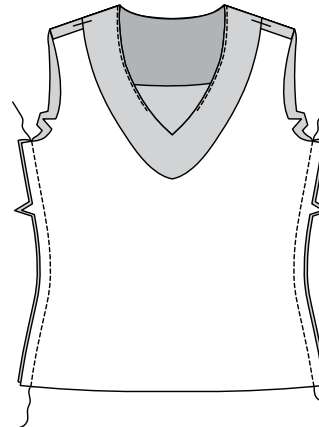


8. **UNDERSTITCH** facing, as far as possible. Turn facing to inside; press. Hand-tack facing at shoulder seams.

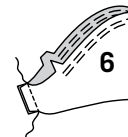


SLEEVE

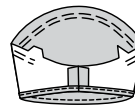
9. With right sides together, stitch front to back at side seams.



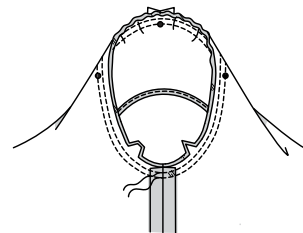
10. **EASE** upper edge of **SLEEVE** (6) between notches. With right sides together, stitch sleeve seam.



11. **NARROW HEM** lower edge of sleeve.

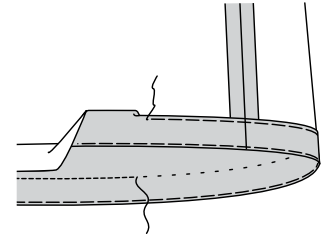


12. With right sides together, pin sleeve into armhole, placing middle small dot at shoulder seam. Adjust ease; baste. Stitch. Stitch again 1/4" (6mm) away in seam allowance. Trim close to stitching. Press seam allowances flat. Turn seam toward sleeve.

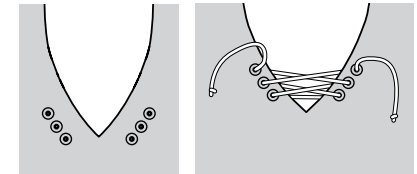


FINISHING

13. Turn up hem on lower edge of garment. Baste close to fold. Turn in 1/4" (6mm) on raw edge, easing in fullness if necessary. Baste hem in place close to upper edge. Press. **TOPSTITCH** hem along upper basting, as shown.

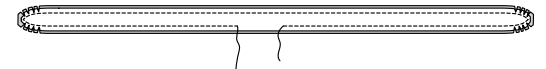


14. **VIEW B** - Apply grommets to front at markings, following manufacturer's directions. Cut a piece of drawstring measuring 43" (109cm) long. Lace drawstring through grommets. Knot ends.

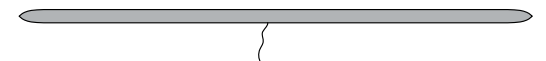


TIE A

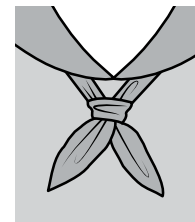
15. With right sides together, pin **TIE** (7) sections together. Stitch outer edge in a 3/8" (1cm) seam, leaving an opening large enough for turning. Trim seam and corners, clip curves.



16. Turn tie right side out through opening. **SLIPSTITCH** opening closed.



17. Slip tie under the collar bringing ends evenly toward center. Tie in a knot at center.





Congrats!

You've completed your sewing adventure

SHARE YOUR LOOK



Post your pattern and tag us
[@simplicity_creative_group](#) and [#knowMepatterns](#)
for a chance to be featured on our social media.

Look for more PDF patterns at [simplicity.com](https://www.simplicity.com)

Have a question or need help with your sewing project call us at
1-800-782-0323

