



DONNY Q  
**knowME**  
BY mimi g

ME2075




Scan QR code for a Sew-Along video tutorial.



@\_donnyQ



Designed and printed in USA

Average

---

**MEN'S COAT AND PANTS**

**Suggested Fabrics:** Broadcloth, Chambray, Chino, Corduroy, Cotton Blends, Denim, Lightweight Wool Blends, Linen Blends, Stretch Wovens. **Lining:** Cotton Blends, Polyester Blends. **Interfacing:** Lightweight Fusible.

**Notions: A:** Six ¾" (2cm) buttons. **B:** One 7" (18cm) zipper (cut to fit), two ¾" (2cm) buttons.

Sizes	34	36	38	40	42	44	46	48	50	52	
<b>BODY MEASUREMENTS: Select pattern size based on body measurements</b>											
Chest	34	36	38	40	42	44	46	48	50	52	Ins.
Waist	28	30	32	34	36	39	42	44	46	48	"
Hip	35	37	39	41	43	45	47	49	51	53	"

<b>Jacket A</b>	45 <sup>**</sup>	3¼	3¼	3¾	3¾	3½	3½	3¾	3¾	3¾	4¾	Yds.
	60 <sup>**</sup>	2½	2½	2½	2½	2¾	2¾	2¾	2¾	2¾	3	"
<b>Lining</b>	45 <sup>**</sup>	2	2	2	2¾	2¾	2¾	2¾	2¾	2¾	2¾	"
<b>Interfacing</b>	20" - 1¾ yds.											
<b>Pants B</b>	45 <sup>**</sup>	2½	2½	2¾	2¾	2¾	2¾	2¾	2¾	2¾	2¾	Yds.
	60 <sup>**</sup>	1¾	2	2	2	2¼	2¼	2¾	2¾	2¾	2¾	"
<b>Lining</b>	45 <sup>**</sup> - ½ yd.											
<b>Interfacing</b>	20" - ¾ yd.											

**FINISHED GARMENT MEASUREMENTS (Includes Design and Wearing Ease)**

<b>A Chest</b>	39	41	43	45	47	49	51	53	55	57	Ins.
<b>A Waist</b>	38½	40½	42½	44½	46½	48½	50½	52½	54½	56½	"
<b>B Waist</b>	30	32	34	36	38	40	42	44	46	48	"
<b>B Hip</b>	38½	40½	42½	44½	46½	48½	50½	52½	54½	56½	"
<b>Width, lower edge</b>											
<b>Jacket A</b>	38½	40½	42½	44½	46½	48½	50½	52½	54½	56½	Ins.
<b>Width, each leg</b>											
<b>Pants B</b>	12½	13	13½	14	14½	15	15½	16	16½	17	Ins.
<b>Finished back length from base of neck</b>											
<b>Jacket A</b>	28	28½	28½	28¾	29	29¼	29½	29¾	30	30¼	Ins.
<b>Finished side length from waist</b>											
<b>Pants B</b>	41¾	42	42¼	42½	42¾	43	43¼	43½	43¾	44	Ins.

\*with nap \*\*without nap

Moins Facile

---

**MANTEAU ET PANTALON POUR HOMMES**

**Tissus Conseillés:** Broadcloth, Chambray, Chino, Velours côtelé, Cotonnades, Denim, Mélanges de laine légère, Lin mélangés, Tissus tissés extensibles. **Doubleure:** Cotonnades, Mélanges de polyester. **Entoilage:** Thermocollant léger.

**Mercerie: A:** 6 boutons de 2cm. **B:** 1 fermeture à glissière de 18cm (coupée pour ajuster), 2 boutons de 2cm.

Tailles	34	36	38	40	42	44	46	48	50	52	
<b>MESURES DU CORPS: Choisissez la taille du patron basée sur les mesures du corps</b>											
<b>Poitrine</b>	87	92	97	102	107	112	117	122	127	132	cm
<b>Taille</b>	71	76	82	87	92	99	107	112	117	122	"
<b>Hanches (23cm au-dessous de la taille)</b>											
	89	94	99	104	109	115	119	124	128	135	cm

<b>Veste A</b>	115cm*	3.0	3.0	3.1	3.1	3.2	3.2	3.2	3.3	3.5	3.8	m
	150cm*	2.3	2.3	2.3	2.3	2.5	2.5	2.5	2.5	2.6	2.7	"
<b>Doubleure</b>	115cm*	1.8	1.8	1.8	2.2	2.2	2.4	2.4	2.4	2.5	2.5	"
<b>Entoilage</b>	51cm - 1.5m											
<b>Pantalon B</b>	115cm*	2.3	2.3	2.4	2.4	2.4	2.4	2.4	2.4	2.4	2.4	m
	150cm*	1.7	1.7	1.8	1.8	1.8	2.1	2.1	2.1	2.2	2.3	"
<b>Doubleure</b>	115cm** - 0.5m											
<b>Entoilage</b>	51cm - 0.8m											

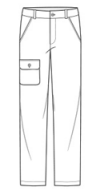
**MESURES DES VÊTEMENTS FINI (Motif et aisance de port compris)**

<b>A Poitrine</b>	99	104	109	114	119	124	130	135	140	145	cm
<b>A Taille</b>	98	103	108	113	118	123	128	133	138	144	"
<b>B Taille</b>	76	81	86	91	97	102	107	112	117	122	"
<b>B Hanches</b>	98	103	108	113	118	123	128	133	138	144	"
<b>Largeur à l'ourlet</b>											
<b>Veste A</b>	98	103	108	113	118	123	128	133	138	144	cm
<b>Largeur, chaque jambe</b>											
<b>Pantalon B</b>	32	33	34	36	37	38	39	41	42	43	cm
<b>Longueur finie – dos, votre nuque à l'ourlet</b>											
<b>Veste A</b>	71	72	72	73	74	74	75	76	76	77	cm
<b>Longueur finie – côté, taille à l'ourlet</b>											
<b>Pantalon B</b>	106	107	107	108	109	109	110	110	111	112	cm

\*avec sens \*\*sans sens



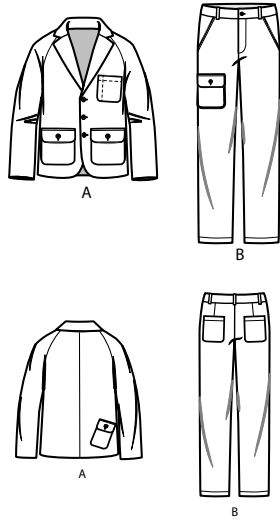
A



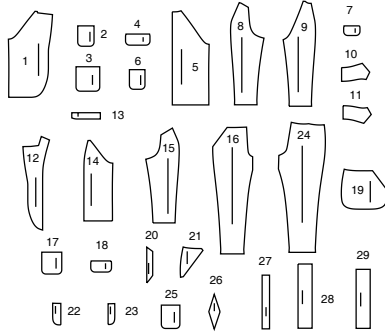
B



@\_donnyQ



29 PATTERN PIECES



- 1 FRONT - A
- 2 UPPER POCKET - A
- 3 LOWER POCKET - A
- 4 LOWER FLAP - A
- 5 BACK - A
- 6 BACK POCKET - A
- 7 FLAP - A
- 8 SLEEVE FRONT - A
- 9 SLEEVE BACK - A
- 10 UPPER COLLAR - A
- 11 UNDER COLLAR - A
- 12 FRONT FACING - A
- 13 HEM FACING - A
- 14 FRONT LINING - A
- 15 SLEEVE FRONT LINING - A
- 16 FRONT - B
- 17 RIGHT POCKET - B
- 18 FLAP - B
- 19 SIDE FRONT AND POCKET - B
- 20 POCKET FACING - B
- 21 YOKE FRONT - B
- 22 LEFT FLY FACING - B
- 23 RIGHT FLY - B
- 24 BACK - B
- 25 BACK POCKET - B
- 26 GUSSET - B
- 27 CARRIER - B
- 28 RIGHT WAISTBAND - B
- 29 LEFT WAISTBAND - B

PATTERN MARKINGS

- GRAINLINE:** Place on straight grain of fabric, parallel to selvage or fold.
- FOLDLINE:** Place line on fold of fabric.
- BUTTONHOLE MARKING:** Indicates exact length and placement of buttonholes.
- BUTTON MARKING:** Indicates button placement.
- NOTCHES AND SYMBOLS:** For matching seams and construction details.
- Indicates the Bustline, Waistline, Hip and/or Biceps.** Measurements refer to circumference of Finished Garment (Body Measurement + Wearing Ease + Design Ease). Adjust pattern if necessary. The measurement excludes pleats, tucks, darts and seam allowances.
- SEAM ALLOWANCE:** 5/8" (1.5cm) included unless otherwise indicated, but not printed on tissue.

ADJUST IF NECESSARY

- Lengthen or Shorten at adjustment lines** (==) or where indicated on pattern. If substantial length is added, you may need to purchase additional fabric.
- TO SHORTEN:** Crease along adjustment line. Make a fold half the amount needed. Tape in place.
- TO LENGTHEN:** Slash between adjustment lines. Spread amount as needed, keeping edges parallel. Tape over paper.
- When Alteration lines are not on tissue,** lengthen or shorten at lower edge.

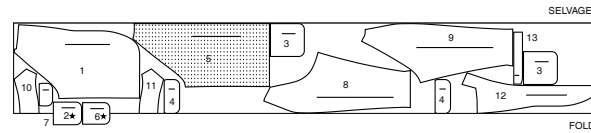
CUTTING AND MARKING

- SHRINK FABRIC** if not labeled pre-shrunk. Press.
- CIRCLE LAYOUT** for View, Size, Fabric Width.
- Use **WITH NAP** layout for fabrics with one-way designs, nap, pile or surface shading. Because most knits have surface shading, a with nap layout is used.
- For **DOUBLE THICKNESS (WITH FOLD)** - fold fabric with right sides together.
- \*DOUBLE THICKNESS (WITHOUT FOLD)** - For fabrics with nap, fold fabric crosswise, right sides together. Mark as shown. Cut along crosswise fold of fabric (A). Turn upper layer 180° so arrows go in same direction and place over lower layer, right sides together (B).
- For **SINGLE THICKNESS** - place fabric right side up. (For Fur Pile fabrics, place pile side down.)
- ★** Cut other pieces first, allowing enough fabric to cut this piece. Open fabric. For "Cut 1" pieces, cut piece once on single layer of fabric with piece face up on right side of fabric.
- Pattern may have cutting lines for several sizes. Select the proper cutting line or pattern pieces for your size.
- Before **CUTTING** place all pieces on fabric according to layout. Pin. (Layouts show approximate position of pattern pieces; position may vary according to your pattern size.) Cut **ACCURATELY**, cutting notches outward.
- Before removing pattern, **TRANSFER MARKINGS** and lines of construction to Wrong Side of fabric, using the Pin and Chalk Pencil method or Tracing Paper and Dressmaker Wheel. Markings needed on right side of fabric should be thread traced.
- NOTE:** Broken-line boxes (at bl cl) in layouts represent pieces cut by measurements provided.

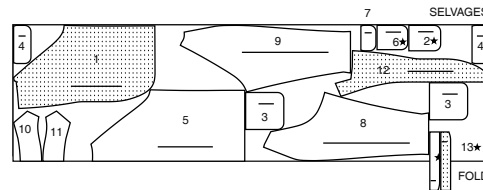
CUTTING LAYOUTS

JACKET A  
PIECES 1 2 3 4 5 6 7 8 9 10 11 12 13

45" (115CM)  
WITH NAP  
ALL SIZES

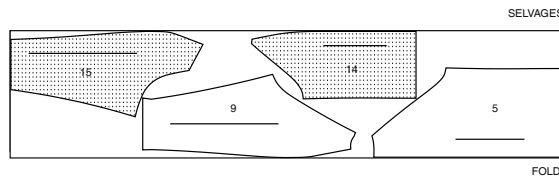


60" (150CM)  
WITH NAP  
ALL SIZES



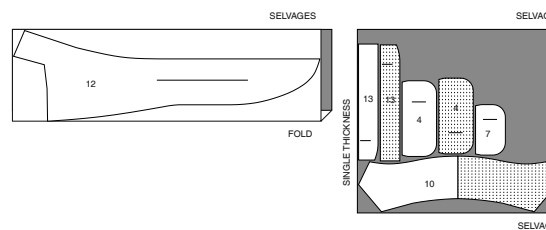
LINING  
PIECES 5 9 14 15

45" (115CM)  
WITHOUT NAP  
ALL SIZES



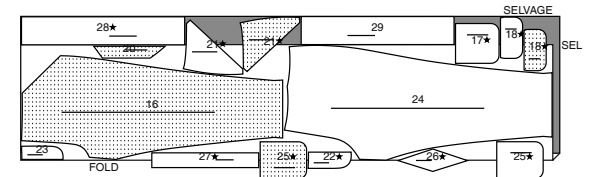
INTERFACING  
PIECES 4 7 10 12 13

20" (51CM)  
ALL SIZES

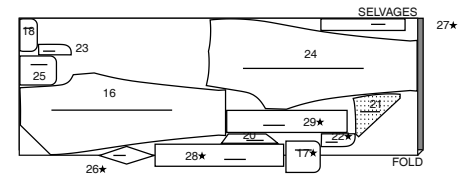


PANTS B  
PIECES 16 17 18 20 21 22 23 24 25 26 27 28 29

45" (115CM)  
WITH NAP  
ALL SIZES

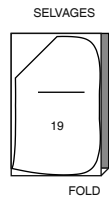


60" (150CM)  
WITH NAP  
ALL SIZES



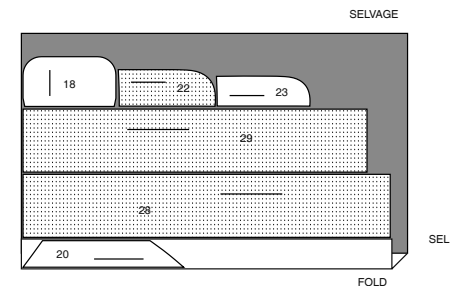
LINING  
PIECE 19

45" (115CM)  
WITHOUT NAP  
ALL SIZES

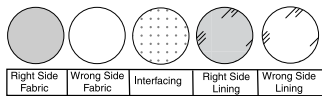


INTERFACING  
PIECES 18 20 22 23 28 29

20" (51CM)  
ALL SIZES

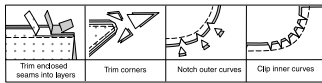


**SEWING INFORMATION**  
FABRIC KEY



**SEAM ALLOWANCES**

Use 5/8" (1.5cm) seam allowances unless otherwise indicated.



**PIN AND FIT**

Pin or baste seams, **RIGHT SIDE TOGETHER**, matching notches. Fit garment before stitching major seams.

**PRESS**

Press seam allowances flat; then open unless otherwise stated. Clip where necessary so they lie flat.

**GLOSSARY**

Sewing methods in **BOLD TYPE** have Sewing Tutorial Video available. Scan QR CODE to watch videos:

**DART** - see sewing flat dart video.

**EASE/GATHER** - see sewing two row gathers video.

**EDGE STITCH** - see how to edgestitch video.

**REINFORCE** - see how to reinforce video.

**STAYSTITCH** - see how to do stay-stitching video.

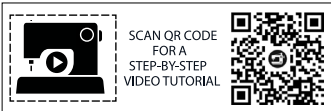
**TOPSTITCH** - see how to topstitch video.

**UNDERSTITCH** - see how to understitch video.

**FINISH** - Stitch 1/4" (6mm) from raw edge and finish with one of the following: (1) Pink OR (2) Overcast OR (3) Turn in along stitching and stitch close to fold OR (4) Overlock.

**OPTIONAL FOR HEMS:** Apply Seam Binding.

**SLIPSTITCH** - Slide needle through a folded edge, then pick up a thread of underneath fabric.

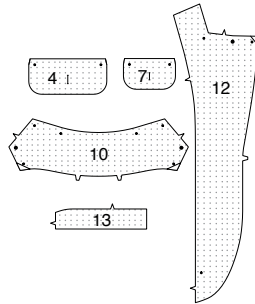


@\_donnyQ

**JACKET A**

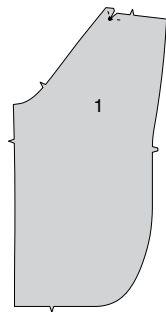
**INTERFACING**

1. Pin **INTERFACING** to wrong side of each matching **FABRIC** section. Fuse, following manufacturer's instructions.



**FRONT**

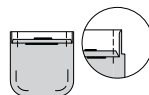
2. **REINFORCE** inner corner of **FRONT** (1), pivoting at small dot, as shown. Clip to small dot.



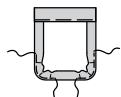
3. Stitch curved edges of **UPPER POCKET** (2) 3/8" (1cm) from raw edge, using long machine stitches, as shown.



4. Turn in 1/4" (6mm) on upper edge. Press. Turn upper edge to outside along foldline; stitch ends. Trim.



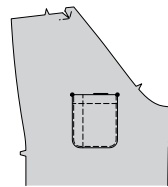
5. Turn upper edge of pocket to inside, turning in seam allowances on remaining edges; pull threads to ease in fullness on curves. Press. Baste close to inner pressed edge.



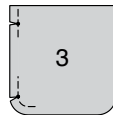
6. **TOPSTITCH** pocket along basting.



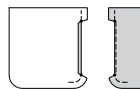
7. Pin pocket to upper left front section, matching large dots. **EDGE STITCH** side and lower edges. Stitch upper pocket along stitching line.



8. For each side, **REINFORCE** one **LOWER POCKET** (3) section through small dots along seamline, as shown. Clip to small dots.



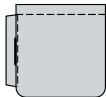
9. Turn in seam allowance between clips. Press. Trim pressed seam allowance to 1/4" (6mm). **EDGE STITCH** pressed edge.



10. With right sides together, for each side, pin one hemmed lower pocket section to one unhemmed lower pocket section. Stitch outer edges between small dots. Clip to small dots. Trim seam, as shown.



11. Turn right side out, having hemmed pocket facing up. Press. Stitch along stitching line.



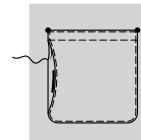
12. Turn in remainder of seam allowances. Press.



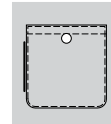
13. Pin lower pocket to lower front, matching large dots. **EDGE STITCH** side and lower edges, leaving open between small dots, as shown, connecting with hem stitching.



14. **SLIPSTITCH** pressed edge to front between small dots, keeping side pocket opening free.



15. Sew button to lower pocket at small dot.



16. For each side, stitch one interfaced and one uninterfaced **LOWER FLAP** (4) section together, leaving upper edge open, as shown. Trim.



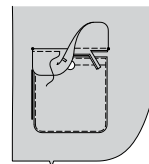
17. Turn. Press. Baste raw edges together.



18. Make buttonhole in flap at marking.

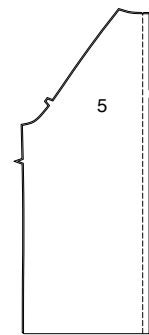


19. Pin flap to front above lower pocket, matching small dots, placing seamline along placement line. Stitch. Trim flap seam allowance to a scant 1/4" (6mm), being careful not to cut front. Turn flap down over pocket. Press. **TOPSTITCH** upper edge of flap.



**BACK AND SLEEVE**

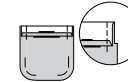
20. Stitch **BACK** (5) sections together at center back.



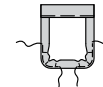
21. Stitch curved edges of **BACK POCKET** (6) 3/8" (1cm) from raw edge, using long machine stitches, as shown.



22. Turn in 1/4" (6mm) on upper edge. Press. Turn upper edge to outside along foldline; stitch ends. Trim.



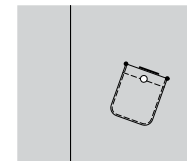
23. Turn upper edge of pocket to inside, turning in seam allowances on remaining edges; pull threads to ease in fullness on curves. Press. Baste close to inner pressed edge.



24. **TOPSTITCH** pocket along basting.



25. Pin pocket to lower right back, matching large dots. **EDGE STITCH** side and lower edges. Sew button to pocket at small dot.



26. With right sides together, stitch **FLAP** (7) sections together, leaving upper edge open, as shown. Trim.



27. Turn. Press. Baste raw edges together.



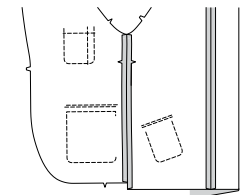
28. Make buttonhole in flap at marking.



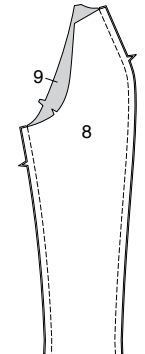
29. Pin flap to right back above pocket, matching small dots, placing seamline along placement line. Stitch. Trim flap seam allowance to a scant 1/4" (6mm), being careful not to cut back. Turn flap down over pocket. Press. **TOPSTITCH** upper edge of flap.



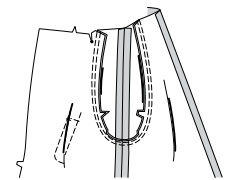
30. Stitch fronts to back at sides. Press seams open, pressing in remainder of seam allowances on side edges of back.



31. Stitch **SLEEVE FRONT** (8) to **SLEEVE BACK** (9) at overarm seam. Stitch sleeve seam.

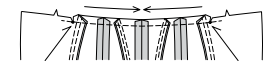


32. With right sides together, pin sleeve to armhole edge, matching notches. Stitch. Stitch again 1/4" (6mm) away in seam allowances. Trim close to second stitching. Press seam allowances flat. Turn seam toward sleeve.

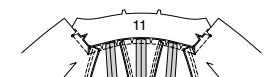


**COLLAR AND FINISHING**

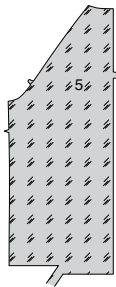
33. **STAYSTITCH** neck edge between clips in direction of arrows.



34. Pin **UNDER COLLAR** (11) to neck edge, matching centers and notches, placing inner small dots at overarm seams, matching remaining symbols, as shown. Baste, clipping neck edge of jacket where necessary. Stitch between large dots. Clip to large dots.



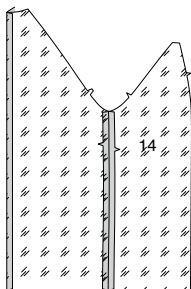
35. Trim 1" (2.5cm) from lower edge of back LINING (5).



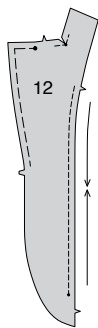
36. Stitch back lining sections together at center back.



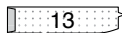
37. Stitch FRONT LINING (14) sections to back lining at sides.



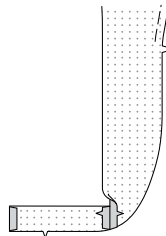
38. **REINFORCE** inner corner of FRONT FACING (12), pivoting at small dot, as shown. Clip to small dot. **EASESTITCH** front edge of front facing between notches and large dot. **STAYSTITCH** side edge of front facing between notch and small dot in direction of arrows.



39. Turn in seam allowance on side edge of HEM FACING (13), as shown. Press.



40. Pin hem facing to lower edge of front facing, matching notches. Stitch.



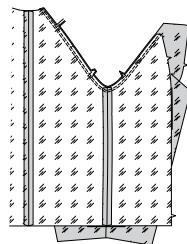
41. Trim 1" (2.5cm) from lower edge of sleeve back LINING (9).



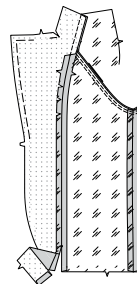
42. Stitch SLEEVE FRONT LINING (15) to sleeve back lining at underarm edge.



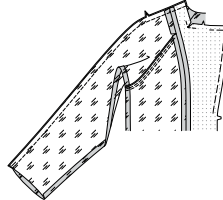
43. With right sides together, pin sleeve lining to armhole edge, matching notches. Stitch. Stitch again 1/4" (6mm) away in seam allowances. Trim close to second stitching. Press seam allowances flat. Turn seam toward sleeve.



44. With right sides together, pin front facings to front lining and sleeve front lining, matching notches, clipping front facing where necessary. Stitch, leaving open below small dot. Press seam open, pressing in remainder of seam allowance on lining.



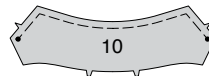
45. Stitch sleeve front lining to sleeve back lining at overarm edge.



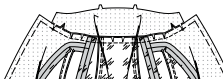
46. **STAYSTITCH** neck edge of facing and lining between clips in direction of arrows.



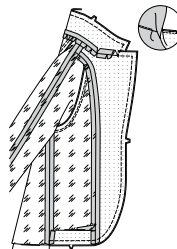
47. **EASESTITCH** upper and upper side edges of UPPER COLLAR (10), between large dots, as shown.



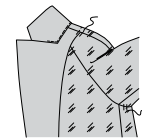
48. Pin upper collar to neck edge, matching centers and notches, placing inner small dots at overarm seams, matching remaining symbols, as shown. Baste, clipping neck edge of facing and lining where necessary. Stitch between large dots. Clip to large dots.



49. With right sides together, pin upper collar, facing and lining to under collar and jacket, matching centers, notches and large dots. Adjust ease; baste. Stitch lower, front and lapel edges to large dots, keeping lining free. Stitch collar edges together between large dots. Trim. **UNDERSTITCH** upper collar as far as possible.



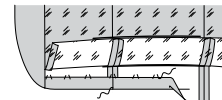
50. Turn facing, upper collar and lining to inside; slip sleeve lining in place. Press. Tack sleeves at shoulders and underarms.



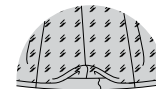
51. Lift out lining. Sew back neck allowances together loosely by hand.



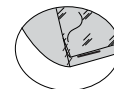
52. Turn up hem at lower edge, keeping lining free. Press. Sew hem and hem facing in place. **SLIPSTITCH** side edges to hem facing, as shown.



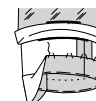
53. Turn in 5/8" (1.5cm) on lower edge of lining and place folded edge 5/8" (1.5cm) below raw edge of hem; **SLIPSTITCH**. **NOTE:** Pleat will form at lower edge for wearing ease.



54. **SLIPSTITCH** remainder of lining to facing and hem, as shown.



55. Turn up hem at lower edge sleeve, keeping lining free. Press. Baste close to fold. Sew hem in place.



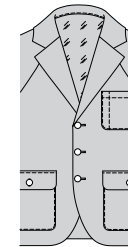
56. Turn in 5/8" (1.5cm) on lower edge of sleeve lining and place folded edge 5/8" (1.5cm) below raw edge of sleeve facing; **SLIPSTITCH**. **NOTE:** Pleat will form at lower edge for wearing ease.



57. Make buttonholes at left front at markings.



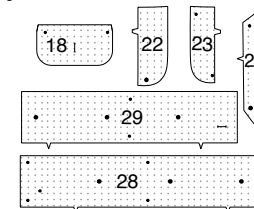
58. Lap opening edges, matching centers. Using buttonholes as guide, make button markings on right front. Sew buttons at markings.



PANTS C

INTERFACING

1. Pin INTERFACING to wrong side of each matching FABRIC section. Fuse, following manufacturer's instructions.

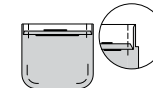


FRONT

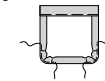
2. Stitch curved edges of RIGHT POCKET (17) 3/8" (1cm) from raw edge, using long machine stitches, as shown.



3. Turn in 1/4" (6mm) on upper edge. Press. Turn upper edge to outside along foldline; stitch ends. Trim.



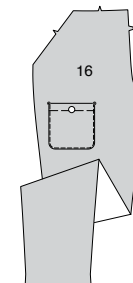
4. Turn upper edge of pocket to inside, turning in seam allowances on remaining edges; pull threads to ease in fullness on curves. Press. Baste close to inner pressed edge.



5. **TOPSTITCH** pocket along basting.



6. Pin pocket to right FRONT (16), matching large dots. **EDGESTITCH** side and lower edges. Sew button to pocket at small dot.



7. With right sides together, stitch FLAP (18) sections together, leaving upper edge open, as shown. Trim.



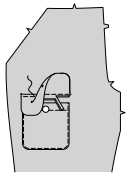
8. Turn. Press. Baste raw edges together.



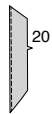
9. Make buttonhole in flap at marking.



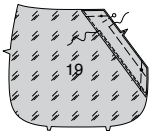
10. Pin flap to right front above pocket, matching small dots, placing seamline along placement line. Stitch. Trim flap seam allowance to a scant 1/4" (6mm), being careful not to cut back. Turn flap down over pocket. Press. TOPSTITCH upper edge of flap.



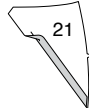
11. FINISH long unnotched edge of POCKET FACING (20).



12. With right sides up, pin pocket interfacing to SIDE FRONT AND POCKET (19), matching symbols and notches. Stitch close to finished edge. Baste raw edges.



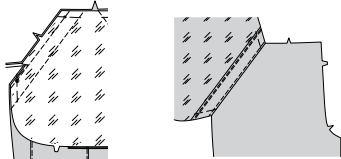
13. Turn in seam allowance on long unnotched edge of YOKE FRONT (21). Press.



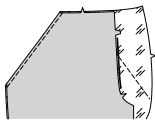
14. With right sides up, pin yoke front to side front and pocket, matching symbols and notches. Stitch close to pressed edge. Baste raw edges.



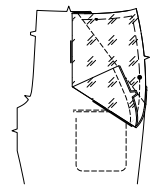
15. With right sides together, pin side front and pocket to upper side edge of front, matching notches and dots. Stitch. Trim. UNDERSTITCH pocket interfacing.



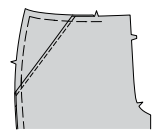
16. Turn pocket to inside. Press. TOPSTITCH pocket seam.



17. With right sides together, fold side front and pocket along foldline. Press. Stitch lower edges together, keeping front free.

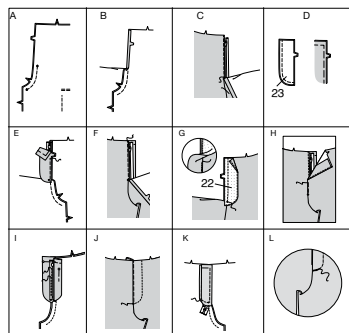


18. Turn in pocket facing and pocket, matching symbols. Baste upper and side edges.



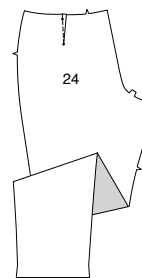
19. Construct fly front as follows:

- A-Stitch front sections together at center front between large dots.
- B-Turn in right front opening edge along foldline; press.
- C-Place closed zipper (face up) under right front opening edge, having pressed edge close to zipper teeth and zipper stop at small dot. Using a zipper foot, baste close to pressed edge.
- D-Stitch RIGHT FLY (23) sections together in a 3/8" (1cm) seam, along outer unnotched edge, as shown. Trim. Turn. Press. Baste raw edges.
- E-On inside, pin right fly to right front opening edge (over zipper), matching notches and small dots, having raw edges even. Baste along previous basting for zipper.
- F-On outside, using a zipper foot, stitch close to pressed edge of front through all layers.
- G-EDGE FINISH outer edge of LEFT FLY FACING (22). Pin fly facing to left front opening edge, matching notches, and large dots. Stitch, ending at large dot. Trim. UNDERSTITCH fly facing. Turn facing to inside.
- H-Lap left front over right, matching centers. Baste edge to edge through all thicknesses.
- I-Pin right fly out of the way. Open out fly facing. Pin remaining zipper tape to fly facing, keeping left front free. Using a zipper foot, stitch in place close to zipper teeth and along center of zipper tape.
- J-Turn facing down. On outside, stitch left front along stitching line, keeping right underlap free.
- K-Turn right fly back in place. On inside, hand tack fly and facing together at lower edge, as shown. Trim away excess zipper tape even with lower edge of fly, if needed.
- L-If desired, on outside, machine-stitch a bar tack across lower end of fly through all thicknesses.



### BACK AND CARRIERS

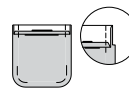
20. Stitch DART in BACK (24). Press toward center.



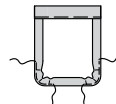
21. Stitch curved edges of BACK POCKET (25) 3/8" (1cm) from raw edge, using long machine stitches, as shown.



22. Turn in 1/4" (6mm) on upper edge. Press. Turn upper edge to outside along foldline; stitch ends. Trim.



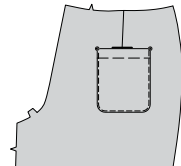
23. Turn upper edge of pocket to inside, turning in seam allowances on remaining edges; pull threads to ease in fullness on curves. Press. Baste close to inner pressed edge.



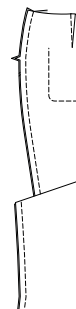
24. TOPSTITCH pocket along basting.



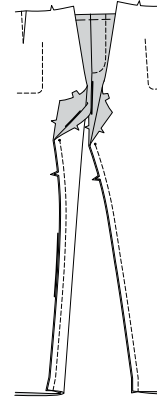
25. Pin pocket to back, matching large dots. EDGESTITCH side and lower edges.



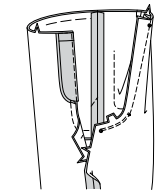
26. Stitch front to back at sides.



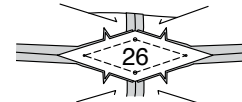
27. Stitch front and back together at inner leg edge, leaving open above small dots.



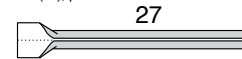
28. For crotch seam, turn one pant leg right side out; slip inside remaining pant leg. Stitch center back seam, continuing along broken line, ending stitching at lower large dot. Stitch again 1/4" (6mm) away in seam allowance along curve. Trim close to second stitching.



29. With right sides together, pin GUSSET (26) to inner edges of front and back, matching symbols. Stitch, breaking stitching at dots. Press seams toward front and back.



30. Turn in 1/4" (6mm) on long edges of CARRIERS (27); press.



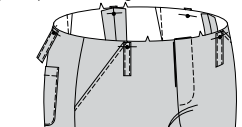
31. With wrong sides together, fold carriers in half lengthwise, having edges even; press. EDGESTITCH both long edges, as shown.



32. Cut carriers into five sections, each 3 7/8" (10cm) long. NOTE: Extra length has been allowed.

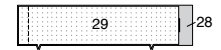


33. Pin carriers to upper edge of pants, centering one end over large dots, having raw edges even. Baste along waist seamline. Stitch carriers in place 1/2" (1.3cm) below basting.



### WAISTBAND AND FINISHING

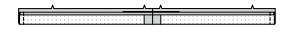
34. Stitch RIGHT WAISTBAND (28) to LEFT WAISTBAND (29) at center back seam.



35. Turn in seam allowance on long unnotched edge of waistband. Press. Trim pressed seam allowance to 3/8" (1cm).



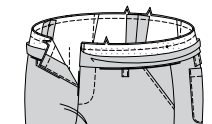
36. With right sides together, fold waistband along foldline. Stitch ends. Trim.



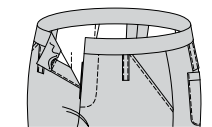
37. Turn. Press.



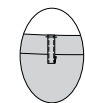
38. Pin waistband to upper edge of pants, matching centers and notches, placing inner small dots at side seams. Stitch. Trim. Press seam toward waistband.



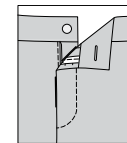
39. SLIPSTITCH pressed edge over seam.



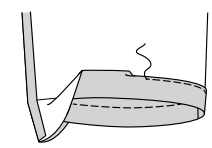
40. Turn in 1/4" (6mm) on remaining ends of carriers. Press. Turn up carriers over waistband, centering pressed end over large dots. Stitch close to pressed edge, through all thicknesses.



41. Make buttonhole in left waistband at marking. Sew button to right waistband at small dot.



42. Turn up hem. Baste close to fold. Turn in 1/4" (6mm) on raw edge; baste. Press. TOPSTITCH hem along upper basting.





# Congrats!

You've completed your sewing adventure

---

## SHARE YOUR LOOK



Post your pattern and tag us  
[@simplicity\\_creative\\_group](#) and [#knowMepatterns](#)  
for a chance to be featured on our social media.

Look for more PDF patterns at [simplicity.com](https://www.simplicity.com)

Have a question or need help with your sewing project call us at  
1-800-782-0323

