

ME2074

Scan QR code for a Sew-Along video tutorial.

@alissahthreads

Designed and printed in USA

											Average	
MISSES' DRESS AND ROMPER												
<b>Suggested Fabrics:</b> Cotton Blends, Gauze, ITY Knit, Jersey, Linen Blends, Pique Knit, Sweater Knit, Terry Knit. <b>Interfacing:</b> Lightweight Fusible.												
<b>Notions:</b> A,B: Six ¾" (1.5cm) buttons, one strip of 7" x 38" (18cm x 97cm) rib knit trim.												
Sizes	4	6	8	10	12	14	16	18	20	22		
European	30	32	34	36	38	40	42	44	46	48		
BODY MEASUREMENTS: Select pattern size based on body measurements												
Bust	29½	30½	31½	32½	34	36	38	40	42	44	Ins.	
Waist	22	23	24	25	26½	28	30	32	34	37	"	
Hip-9" below waist	31½	32½	33½	34½	36	38	40	42	44	46	"	
Back-neck to waist	15¼	15½	15¾	16	16¼	16½	16¾	17	17¼	17½	"	
Dress A	45"*	2½	2½	3	3	3	3½	3½	3½	3¼	3¼	Yds.
	60"*	2½	2½	2½	2½	2½	2½	2½	2½	2½	3	"
Interfacing	20" - ¾ yd.											
Romper B	45"*	3	3½	3½	3½	3¼	3¼	3¼	3½	3½	3½	Yds.
	60"*	2½	2½	2½	2½	2½	2½	2¾	2½	2½	3	"
Interfacing	20" - ¾ yd.											
FINISHED GARMENT MEASUREMENTS (Includes Design and Wearing Ease)												
A,B Bust	40½	41½	42½	43½	45	47	49	51	53	55	Ins.	
A,B Waist	41½	42½	43½	44½	46	48	50	52	54	56	"	
A,B Hip	46	47	48	49	50½	52½	54½	56½	58½	60½	"	
Width, lower edge												
Dress A	50½	51½	52½	53½	55	57	59	61	63	65	Ins.	
Width, each leg												
Romper B	21¾	22¼	22¾	23	23½	24¼	25	25¾	26½	27¼	Ins.	
Finished back length from base of neck												
Dress A, Romper B	33¾	34	34¼	34½	34¾	35	35¼	35½	35¾	36	Ins.	
*with nap    **without nap												

Moins Facile

ROBE ET BARboteuse POUR JEUNES FEMMES

Tissus Conseillés: Cottonnades, Gaze, Tricot interlock en fil retors, Jersey, Lin mélangés, Tricot Piqué, Tricot pour chandails, Tricot éponge. Entoilage: Thermocollant léger.

Merçerie: A,B: 6 boutons de 1.5cm, 1 bande de 18cm x 97cm de galon de tricot à côtes.

Tailles	4	6	8	10	12	14	16	18	20	22	
Françaises	32	34	36	38	40	42	44	46	48	50	
Européen	30	32	34	36	38	40	42	44	46	48	

MESURES DU CORPS: Choisissez la taille du patron basée sur les mesures du corps

Poitrine	75	78	80	83	87	92	97	102	107	112	cm
Taille	56	58	61	64	67	71	76	81	87	94	"
Hanches (23cm au-dessous de la taille)	80	83	85	88	92	97	102	107	112	117	cm
Dos du cou à la taille	39	39.5	40	40.5	41.5	42	42.5	43	44	44.5	"
Robe A	115cm*	2.6	2.6	2.7	2.7	2.7	2.9	2.9	2.9	3.0	3.0 m
	150cm*	1.8	1.9	1.9	1.9	2.4	2.4	2.5	2.5	2.6	2.7 "
Entoilage	51cm - 0.7m										
Barboteuse B	115cm*	2.7	2.9	2.9	2.9	3.0	3.0	3.0	3.2	3.2	3.2 m
	150cm*	1.8	1.9	1.9	1.9	2.4	2.4	2.5	2.5	2.6	2.7 "
Entoilage	51cm - 0.7m										

MESURES DES VÊTEMENTS FINI (Motif et aisance de port compris)

A,B Poitrine	103	105	108	110	114	119	124	130	135	140	cm
A,B Taille	105	108	110	113	117	122	127	132	137	142	"
A,B Hanches	117	119	122	124	128	133	138	144	149	154	"
Largeur à l'ourlet											
Robe A	128	131	133	136	140	145	150	155	160	165	cm
Largeur, chaque jambe											
Barboteuse B	56	57	57	58	60	62	64	65	67	69	cm
Longueur finie – dos, votre nuque à l'ourlet											
Robe A, Barboteuse B	86	86	87	88	88	89	90	90	91	91	cm

\*avec sens \*\*sans sens



A



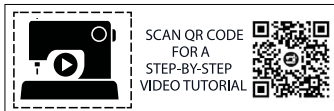
B

ME2074

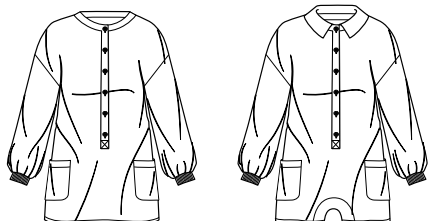
knowME<sup>TM</sup>  
BY mimi g

Page 1 of 3

1-800-782-0323

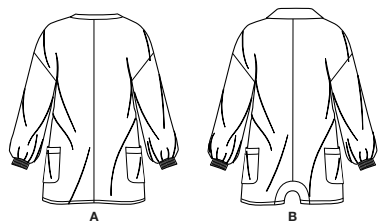


@alissahthreads



A

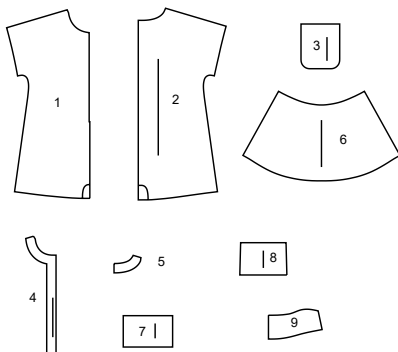
B



A

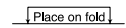
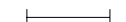
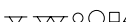
B

## 9 PATTERN PIECES



- 1 FRONT - A,B  
2 BACK - A,B  
3 POCKET - A,B  
4 PLACKET - A,B  
5 BACK NECKBAND - A,B  
6 SLEEVE - A,B  
7 SLEEVE BAND - A,B  
8 GUSSET - B  
9 COLLAR - B

## PATTERN MARKINGS

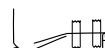
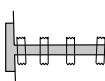
**GRAINLINE:** Place on straight grain of fabric, parallel to selvage or fold.**FOLDLINE:** Place line on fold of fabric.**BUTTONHOLE MARKING:** Indicates exact length and placement of buttonholes.**BUTTON MARKING:** Indicates button placement.**NOTCHES AND SYMBOLS:** For matching seams and construction details.

Indicates the Bustline, Waistline, Hip and/or Biceps. Measurements refer to circumference of Finished Garment (Body Measurement + Wearing Ease + Design Ease). Adjust pattern if necessary. The measurement excludes pleats, tucks, darts and seam allowances.

**SEAM ALLOWANCE:** 5/8" (1.5cm) included unless otherwise indicated, but not printed on tissue.

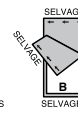
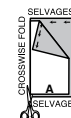
## ADJUST IF NECESSARY

Lengthen or Shorten at adjustment lines (==) or where indicated on pattern. If substantial length is added, you may need to purchase additional fabric.

**TO SHORTEN:** Crease along adjustment line. Make a fold half the amount needed. Tape in place.**TO LENGTHEN:** Slash between adjustment lines. Spread amount as needed, keeping edges parallel. Tape over paper.

When Alteration lines are not on tissue, lengthen or shorten at lower edge.

## CUTTING AND MARKING

**SHRINK FABRIC** if not labeled pre-shrunk. Press.**CIRCLE LAYOUT** for View, Size, Fabric Width.Use **WITH NAP** layout for fabrics with one-way designs, nap, pile or surface shading. Because most knits have surface shading, a with nap layout is used.For **DOUBLE THICKNESS (WITH FOLD)** - fold fabric with right sides together.**\* DOUBLE THICKNESS (WITHOUT FOLD)** - For fabrics with nap, fold fabric crosswise, right sides together. Mark as shown. Cut along crosswise fold of fabric (A). Turn upper layer 180° so arrows go in same direction and place over lower layer, right sides together (B).For **SINGLE THICKNESS** - place fabric right side up. (For Fur Flee fabrics, place pile side down.)

★ Cut other pieces first, allowing enough fabric to cut this piece. Open fabric. For "Cut 1" pieces, cut piece once on single layer of fabric with piece face up on right side of fabric.

Pattern may have cutting lines for several sizes. Select the proper cutting line or pattern pieces for your size.

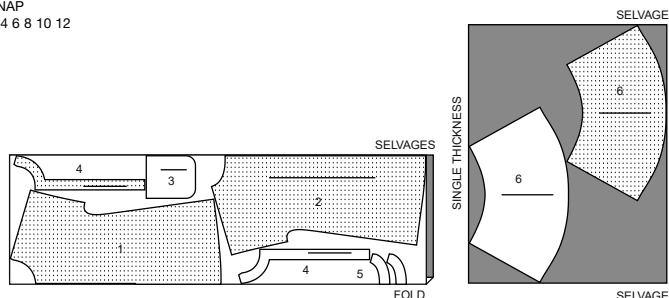
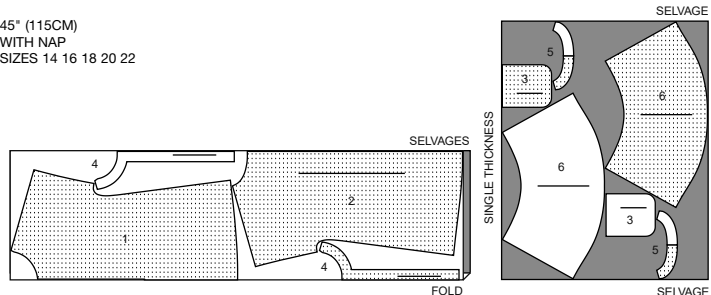
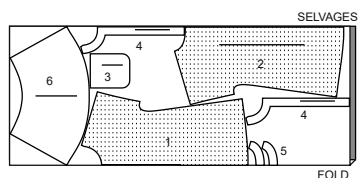
Before **CUTTING** place all pieces on fabric according to layout. Pin. (Layouts show approximate position of pattern pieces; position may vary according to your pattern size.) Cut **ACCURATELY**, cutting notches outward.Before removing pattern, **TRANSFER MARKINGS** and lines of construction to Wrong Side of fabric, using the Pin and Chalk Pencil method or Tracing Paper and Dressmaker Wheel. Markings needed on right side of fabric should be thread traced.**NOTE:** Broken-line boxes (at bl cl) in layouts represent pieces cut by measurements provided.

## CUTTING LAYOUTS

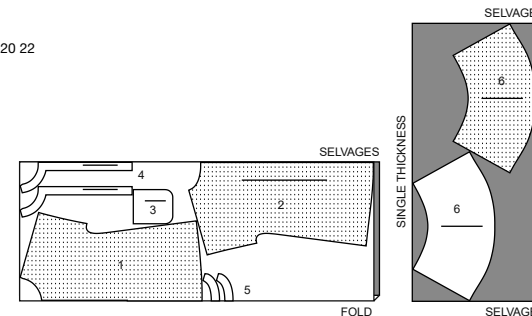
**NOTE:** CONTRAST SLEEVE BAND A,B - CUT PIECE 7 FROM RIB KNIT TRIM

## DRESS A

PIECES 1 2 3 4 5 6

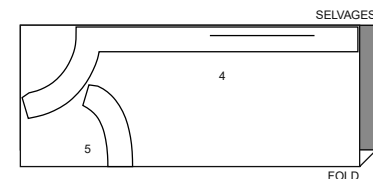
45" (115CM)  
WITH NAP  
SIZES 4 6 8 10 1245" (115CM)  
WITH NAP  
SIZES 14 16 18 20 2260" (150CM)  
WITH NAP  
SIZES 4 6 8 10

RIGHT SIDE OF PATTERN	WRONG SIDE OF PATTERN	RIGHT SIDE OF FABRIC	WRONG SIDE OF FABRIC

60" (150CM)  
WITH NAP  
SIZES 12 14 16 18 20 22

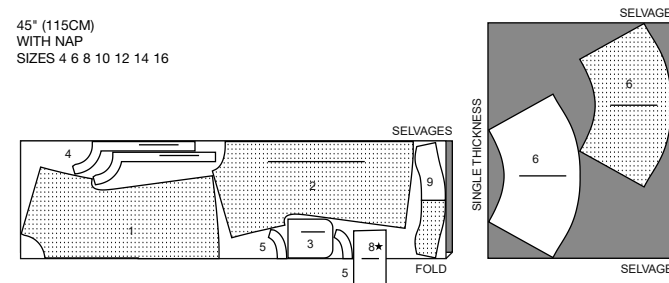
## INTERFACING

PIECES 4 5

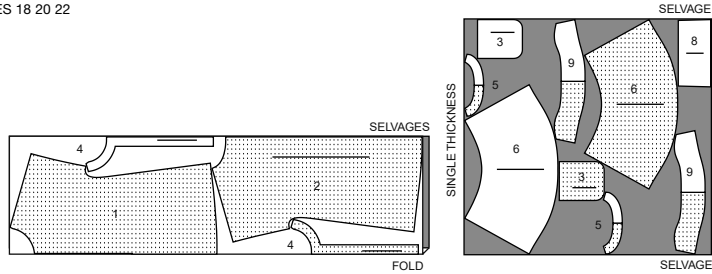
20" (51CM)  
ALL SIZES

## DRESS B

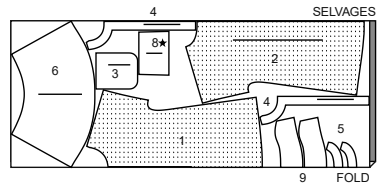
PIECES 1 2 3 4 5 6 8 9

45" (115CM)  
WITH NAP  
SIZES 4 6 8 10 12 14 16

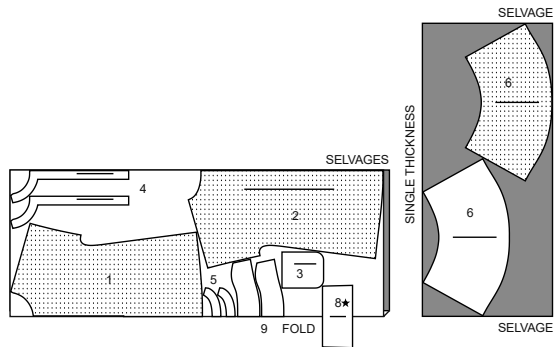
45" (115CM)  
WITH NAP  
SIZES 18 20 22



60" (150CM)  
WITH NAP  
SIZES 4 6 8 10



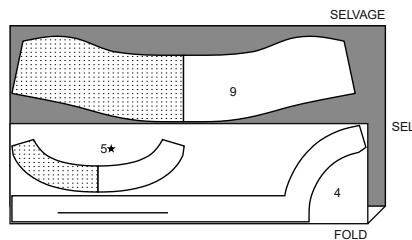
60" (150CM)  
WITH NAP  
SIZES 12 14 16 18 20 22



## INTERFACING

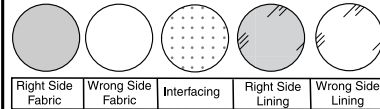
PIECES 4 5 9

20" (51CM)  
ALL SIZES



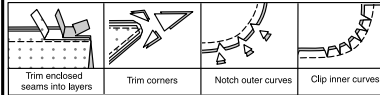
## SEWING INFORMATION

### FABRIC KEY



### SEAM ALLOWANCES

Use 5/8" (1.5cm) seam allowances unless otherwise indicated.



### PIN AND FIT

Pin or baste seams, **RIGHT SIDE TOGETHER**, matching notches. Fit garment before stitching major seams.

### PRESS

Press seam allowances flat; then open unless otherwise stated. Clip where necessary so they lie flat.

## GLOSSARY

Sewing terms appearing in **BOLD TYPE** in Sewing Instructions are explained below.

**GATHER** – Loosen needle tension slightly. With **RIGHT** side up, stitch 5/8" (1.5cm) from cut edge using a long stitch. Stitch again 1/4" (6mm) from the first stitching within the seam allowance.

**NARROW HEM** – Press under hem allowance as indicated on tissue pattern. To form narrow hem, tuck under raw edge to meet crease. Press. Stitch hem in place.

**STAY-STITCH** – Stitch 1/4" (6mm) from cut edge in direction of arrows. This stitching stays in permanently to prevent stretching on curved edges. (Shown only in the first illustration.)

**UNDERSTITCH** – Press facing and seam away from garment, stitching through facing and seam allowances close to seam.



@alissahthreads

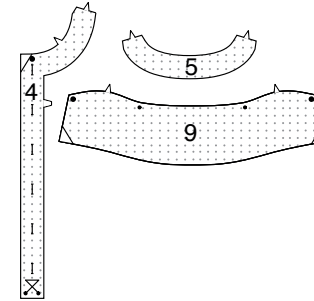
**PATTERN PIECES WILL BE IDENTIFIED BY NUMBERS THE FIRST TIME THEY ARE USED.**

**STITCH SEAMS WITH RIGHT SIDES TOGETHER UNLESS OTHERWISE STATED.**

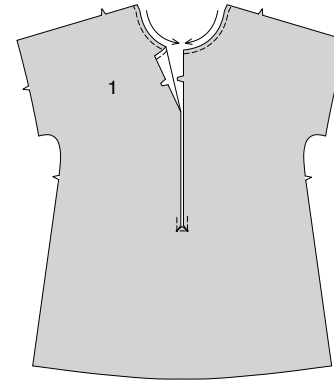
## SEWING DIRECTIONS

### DRESS A, ROMPER B

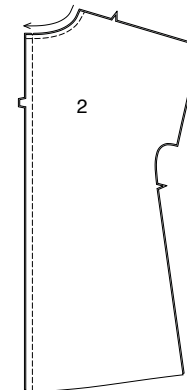
**1.** Apply interfacing to **PLACKET (4)** and **BACK NECKBAND (5)**, and additionally for View B, **COLLAR (9)**. Fuse in place following manufacturer's directions.



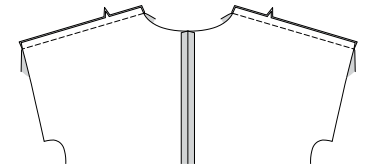
**2. STAY-STITCH** neck edge of **FRONT (1)** in direction of arrows. To reinforce front at the inner small dots, stitch along seam line for about 1" (2.5cm) each side of small dot, stitching through dot, as shown. Clip to stitching at the dot.



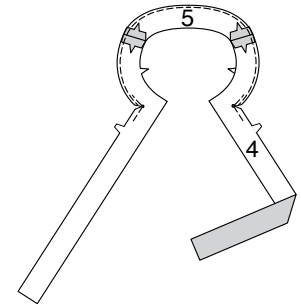
**3. STAY-STITCH** neck edge of **BACK (2)** in direction of arrows. Stitch back edges of back together.



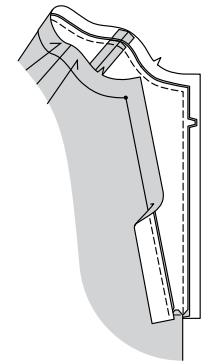
**4.** Stitch front to back at shoulder edges.



**5.** Pin **PLACKET (4)** to **BACK NECKBAND (5)** at shoulder edges. Stitch. Machine-stitch inner edge of back neckband and placket along seam line starting and stopping 1" (2.5cm) below upper small dots, as shown. Clip to stitching at small dots.

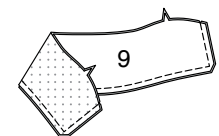


**6.** With right sides together, pin inner edge of neckband and placket to upper edge of garment, matching centers, seams, and small dots, clipping band to stitching as necessary. Stitch inner neck edge and front starting and stopping at lower small dots, back-stitching at dots to reinforce the seam. Press seam toward band and placket, pressing band and placket out.

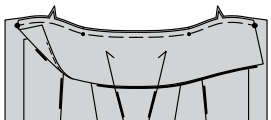


### COLLAR B

**7.** With right sides together and raw edges even, stitch facing to **COLLAR (9)** in a 3/8" (1cm) seam, leaving notched edges open. Trim seam and corners.

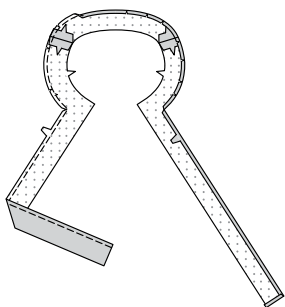


**8. UNDERSTITCH** the collar facing. Turn collar; press. Baste raw edges together. With right sides together and raw edges even, pin collar (facing side) to back neckband and placket, matching centers back and notches, placing small dots at shoulder seams and ends at large dots. Machine-baste.

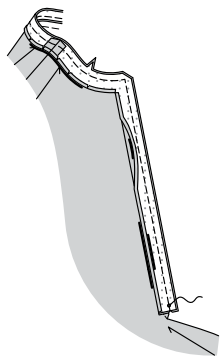


#### CONTINUE AS FOLLOWS FOR BOTH VIEWS

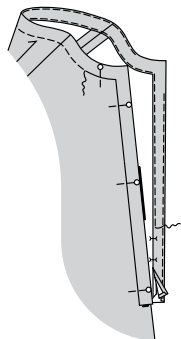
**9.** Stitch shoulder edges of back neckband and placket facing. Machine-stitch 1/4" (6mm) from inner edge. Press under facing along stitching, clipping to stitching as necessary. Press under lower edge of LEFT placket facing 1/4" (6mm).



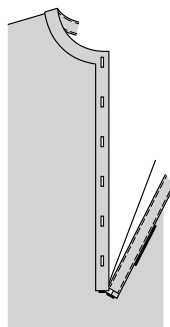
**10.** With right sides together, pin facing to placket at neck and front edges, (over collar for View B). Stitch starting and stopping at lower small dots, back-stitching at dots to reinforce the seam.



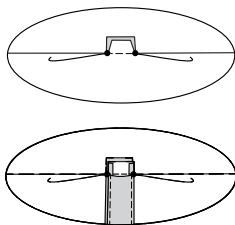
**11. UNDERSTITCH** the facing. Turn facing to inside; press. On inside, pin pressed edge of facing over seam, placing pins on outside. On outside, stitch in the ditch of the seam, catching in inner edge of facing on the inside.



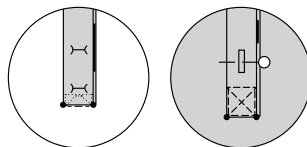
**12.** Make buttonholes on RIGHT placket at markings.



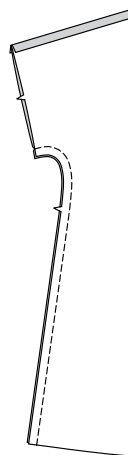
**13.** On outside, lap right placket over left placket, matching small dots; pin. Fold upper front down along lower placket seamline with right sides together. Pin clipped edge of front to plackets matching small dot. Stitch between small dots, back-stitching at dots to reinforce the seam, being careful not to catch in lower edge of left placket facing.



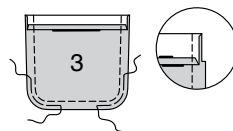
**14.** Press plackets up pressing seam toward placket. Pin pressed lower edge of left placket facing over seam, placing pins on outside. On outside, stitch along stitching lines through all thicknesses, catching in lower edge of left placket facing on the inside.



**15.** Stitch front to back at side edges.



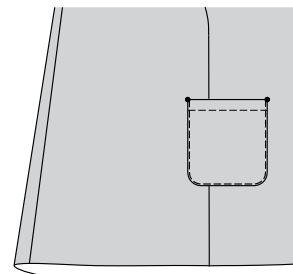
**16.** Press under 1/4" (6mm) on upper edge of POCKET (3). Turn upper edge to outside along fold line, forming facing. Stitch along seam line on raw edges. To ease curved edge of pocket, stitch 1/4" (6mm) inside the seam line, using a long machine-stitch. Trim seam allowance in the facing area to 1/4" (6mm).



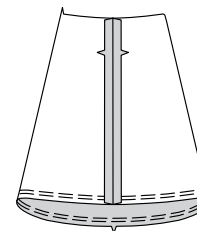
**17.** Turn corners right side out, turning facing to the wrong side; press, pressing under raw edges along stitching. Stitch facing close to inner edge.



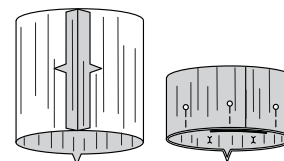
**18.** On outside, pin pocket to garment, matching large dots. Stitch close to side and lower edges.



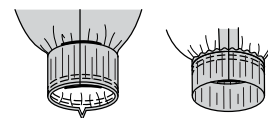
**19.** Stitch underarm edges of SLEEVE (6) together. **GATHER** lower edge.



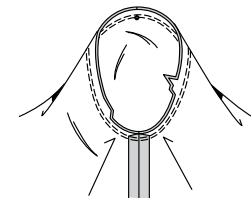
**20.** With right sides together, stitch notched ends of SLEEVE BAND (7) together. Fold sleeve band in half, with wrong sides together and raw edges even; press. Pin.



**21.** On outside, pin band to lower edge of sleeve with raw edges even, matching seams and notches, pulling up gathering stitches on sleeve to fit. Stitch. Stitch again 1/4" (6mm) from first stitching within the seam allowance. Trim close to second stitching. Press seam toward sleeve, pressing band out.

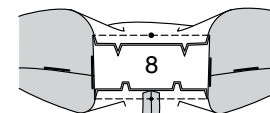


**22.** Turn sleeve right side out. Hold garment wrong side out with armhole toward you. With right sides together, pin sleeve to armhole edge with center small dot at shoulder seam, matching underarm seams, and notches. Baste. Stitch. Stitch again 1/8" (3mm) from first stitching. Trim seam below notches close to stitching. Press only the seam allowance, shrinking out fullness.



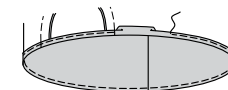
#### GUSSET B

**23.** On inside, pin GUSSET (8) to inner leg edges of front and back, matching small dots, large dots, and notches. Stitch. Press seam toward gusset.

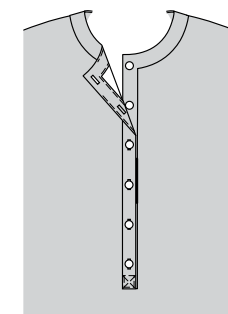


#### CONTINUE AS FOLLOWS FOR BOTH VIEWS

**24.** Press up hem allowance on lower edge of garment. **NARROW HEM.**



**25.** Sew buttons to left front placket under buttonholes.





# Congrats!

You've completed your sewing adventure

---

## SHARE YOUR LOOK



Post your pattern and tag us  
[@simplicity\\_creative\\_group](#) and [#knowMepatterns](#)  
for a chance to be featured on our social media.

Look for more PDF patterns at [simplicity.com](https://www.simplicity.com)

Have a question or need help with your sewing project call us at  
1-800-782-0323



KnowMe ©2023 a division of IG Design Group Americas Inc. • Atlanta, GA 30342 USA [www.thedesigngroup.com](http://www.thedesigngroup.com) • All Rights Reserved. [www.mccall.com](http://www.mccall.com) • Made in the U.S.A. Fabriqué aux États-Unis.  
To be used for individual private home use only and not for commercial or manufacturing purposes. • A usage privé seulement et non à des fins commerciales ou de production en série. • Para uso privado solamente, no se puede utilizar con propósitos de comercialización o de producción en serie.