



ALISHA GRACE

knowME™
BY MISSALISHA GRACE

ME2073



Scan QR code
for a Sew-Along
video tutorial.



@missalishagrace



Designed and
printed in USA

											Average
MISSES' CROP TOP AND SKIRT											
Suggested Fabrics: Batiks, Chambray, Charmeuse, Cotton Lawn, Cotton Blends, Gauze, Gingham, Linen Blends, Poplin, Silky Types. Lining: Cotton Blends, Polyester Blends. Interfacing: Lightweight Fusible.											
Notions: A: One 5" (12cm) separating zipper (cut to fit), pair of ¾" (1cm) bra strap sliders and rings. B: One 9" (23cm) invisible zipper.											
Sizes	8	10	12	14	16	18	20	22	24	26	
European	34	36	38	40	42	44	46	48	50	52	
BODY MEASUREMENTS: Select pattern size based on body measurements											
Bust	31½	32½	34	36	38	40	42	44	46	48	Ins.
Waist	24	25	26½	28	30	32	34	37	39	41	"
Hip-9" below waist	33½	34½	36	38	40	42	44	46	48	50	"
Back-neck to waist	15¾	16	16¼	16½	16¾	17	17¼	17½	17¾	18	"
Top A	45, 60**	¾	¾	¾	¾	¾	¾	¾	¾	¾	Yd.
Lining	45****	½	½	½	¾	¾	¾	¾	¾	¾	"
Skirt B	45**	¾	¾	¾	¾	¾	¾	¾	¾	¾	Yds.
	60**	2¾	2¾	2¾	2¾	3	3	3	3	3	"
Interfacing	20"	¾	¾	1	1	1½	1½	1½	1½	1½	"
FINISHED GARMENT MEASUREMENTS (Includes Design and Wearing Ease)											
A Bust	33½	34½	36	38	40	42	44	46	48	50	Ins.
B Waist	25½	26½	28	30	32	34	36	38	40	42	"
B Hip	41	42	43½	45½	47½	49½	51½	53½	55½	57½	"
Finished back length from waist											
Skirt B	34	34	34	34	34	34	34	34	34	34	Ins.
*with nap **without nap											

Moins Facile

HAUT COURT ET JUPE POUR JEUNES FEMMES												
Tissus Conseillés: Batiks, Chambray, Charmeuse, Linon de coton, Cotonnades, Gaze, Vichy, Lin mélangés, Popeline, Tissus soyeux. Doubleure: Cotonnades, Mélanges de polyester. Entoilage: Thermocollant léger.												
Mercerie: A: 1 fermeture à glissière séparable de 12cm (coupée pour ajuster), paire de régleurs soutien-gorge de 1cm. B: 1 fermeture à glissière invisible de 23cm.												
Tailles	8	10	12	14	16	18	20	22	24	26		
Françaises	36	38	40	42	44	46	48	50	52	54		
Européen	34	36	38	40	42	44	46	48	50	52		
MESURES DU CORPS: Choisissez la taille du patron basée sur les mesures du corps												
Poitrine	80	83	87	92	97	102	107	112	117	122	cm	
Taille	61	64	67	71	76	81	87	94	99	104	"	
Hanches (23cm au-dessous de la taille)	85	88	92	97	102	107	112	117	122	127	cm	
Dos du cou à la taille	40	40.5	41.5	42	42.5	43	44	44.5	45	46	"	
Haut A	115, 150cm*	0.6	0.6	0.6	0.6	0.6	0.7	0.7	0.7	0.7	0.8	m
Doubleure	115cm**	0.5	0.5	0.5	0.6	0.6	0.6	0.7	0.7	0.7	0.7	"
Jupe B	115cm*	3.4	3.4	3.4	3.4	3.4	3.4	3.4	3.4	3.4	3.5	m
	150cm*	2.4	2.4	2.4	2.4	2.5	2.7	2.7	2.7	2.7	2.7	"
Entoilage	51cm	0.8	0.8	0.9	0.9	1.0	1.0	1.0	1.1	1.1	1.3	"
MESURES DES VÊTEMENTS FINI (Motif et aisance de port compris)												
A Poitrine	85	88	91	97	102	107	112	117	122	127	cm	
B Taille	65	67	71	76	81	86	91	97	102	107	"	
B Hanches	104	107	110	116	121	126	131	136	141	146	"	
Longueur finie – dos, taille à l'ourlet												
Skirt B	86	86	86	86	86	86	86	86	86	86	cm	
*avec sens **sans sens												

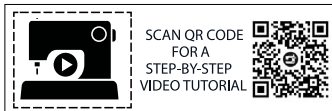


ME2073

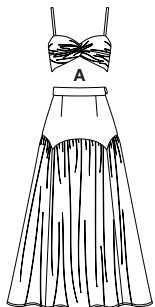
Page 1 of 3

knowME
BY mimi g

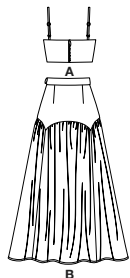
1-800-782-0323



@alissahthreads

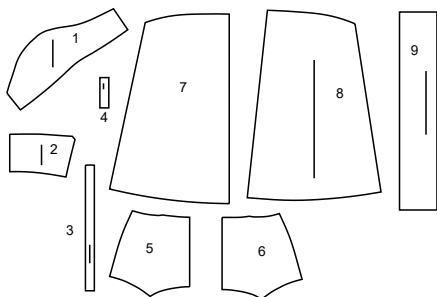


B



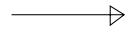
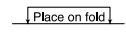
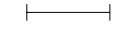
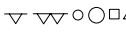
B

9 PATTERN PIECES



- 1 Front-A
2 Back-A
3 Shoulder Strap-A
4 Loop-A
5 Yoke Front-B
6 Yoke Back-B
7 Front and Back-B
8 Side Front and Side Back-B
9 Waistband-B

PATTERN MARKINGS

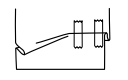
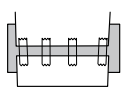
**GRAINLINE:** Place on straight grain of fabric, parallel to selvage or fold.**FOLDLINE:** Place line on fold of fabric.**BUTTONHOLE MARKING:** Indicates exact length and placement of buttonholes.**BUTTON MARKING:** Indicates button placement.**NOTCHES AND SYMBOLS:** For matching seams and construction details.

Indicates the Bustline, Waistline, Hip and/or Biceps. Measurements refer to circumference of Finished Garment (Body Measurement + Wearing Ease + Design Ease). Adjust pattern if necessary. The measurement excludes pleats, tucks, darts and seam allowances.

SEAM ALLOWANCE: 5/8" (1.5cm) included unless otherwise indicated, but not printed on tissue.

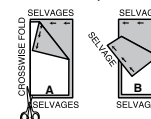
ADJUST IF NECESSARY

Lengthen or Shorten at adjustment lines (==) or where indicated on pattern. If substantial length is added, you may need to purchase additional fabric.

TO SHORTEN: Crease along adjustment line. Make a fold half the amount needed. Tape in place.**TO LENGTHEN:** Slash between adjustment lines. Spread amount as needed, keeping edges parallel. Tape over paper.

When Alteration lines are not on tissue, lengthen or shorten at lower edge.

CUTTING AND MARKING

SHRINK FABRIC if not labeled pre-shrunk. Press.**CIRCLE LAYOUT** for View, Size, Fabric Width.Use **WITH NAP** layout for fabrics with one-way designs, nap, pile or surface shading. Because most knits have surface shading, a nap layout is used.For **DOUBLE THICKNESS (WITH FOLD)** - fold fabric with right sides together.***DOUBLE THICKNESS (WITHOUT FOLD)** - For fabrics with nap, fold fabric crosswise, right sides together. Mark as shown. Cut along crosswise fold of fabric (A). Turn upper layer 180° so arrows go in same direction and place over lower layer, right sides together (B).For **SINGLE THICKNESS** - place fabric right side up. (For Fur Pile fabrics, place pile side down.)

★ Cut other pieces first, allowing enough fabric to cut this piece. Open fabric. For "Cut 1" pieces, cut piece once on single layer of fabric with piece face up on right side of fabric.

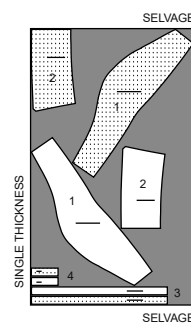
Pattern may have cutting lines for several sizes. Select the proper cutting line or pattern pieces for your size.

Before **CUTTING** place all pieces on fabric according to layout. Pin. (Layouts show approximate position of pattern pieces; position may vary according to your pattern size.) Cut **ACCURATELY**, cutting notches outward.Before removing pattern, **TRANSFER MARKINGS** and lines of construction to Wrong Side of fabric, using the Pin and Chalk Pencil method or Tracing Paper and Dressmaker Wheel. Markings needed on right side of fabric should be thread traced.**NOTE:** Broken-line boxes (a1 b1 c1) in layouts represent pieces cut by measurements provided.

CUTTING LAYOUTS

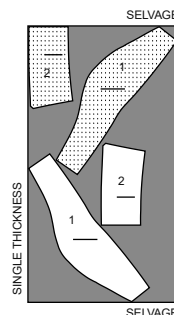
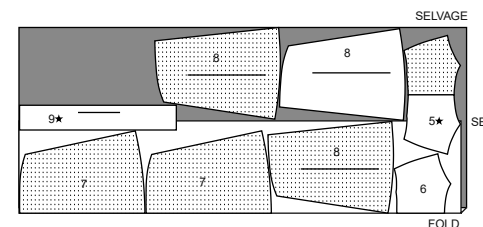
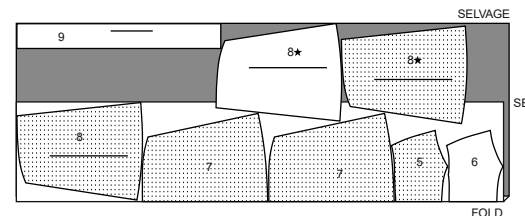
TOP A

PIECES 1 2 3 4

45" TO 60" (115CM TO 150CM)
WITH NAP
ALL SIZES

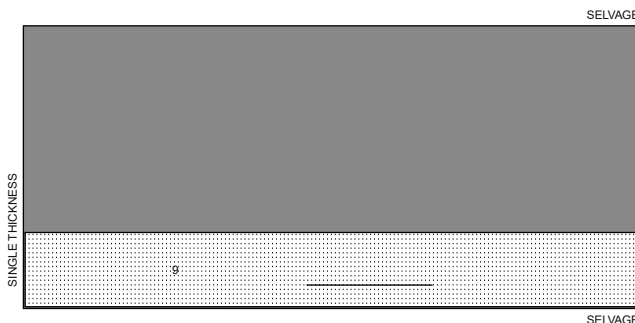
LINING A

PIECES 1 2

45" (115CM)
WITHOUT NAP
ALL SIZES60" (150CM)
WITH NAP
SIZES 8-10-12-14-1660" (150CM)
WITH NAP
SIZES 18-20-22-24-26

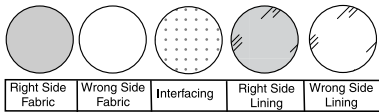
INTERFACING

PIECE 9

20" (51CM)
ALL SIZES

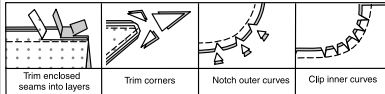
SEWING INFORMATION

FABRIC KEY



SEAM ALLOWANCES

Use 5/8" (1.5cm) seam allowances unless otherwise indicated.



PIN AND FIT

Pin or baste seams, **RIGHT SIDE TOGETHER**, matching notches. Fit garment before stitching major seams.

PRESS

Press seam allowances flat; then open unless otherwise stated. Clip where necessary so they lie flat.

GLOSSARY

Sewing terms appearing in **BOLD TYPE** in Sewing Instructions are explained below.

EDGE STITCH - Stitch close to finished edge or seam.

GATHER - Stitch along seamline and again 1/4" (6mm) away in seam allowance, using long machine stitches. Pull thread ends when adjusting to fit.

NARROW HEM - Turn in hem; press, easing in fullness if necessary. Open out hem. Turn in again so raw edge is along crease; press. Turn in along crease; stitch.

SLIPSTITCH - Slide needle through a folded edge, then pick up a thread of underneath fabric.



SCAN QR CODE
FOR A
STEP-BY-STEP
VIDEO TUTORIAL

@alissahthreads

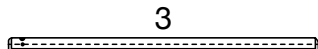
PATTERN PIECES WILL BE IDENTIFIED BY NUMBERS THE FIRST TIME THEY ARE USED.

STITCH SEAMS WITH RIGHT SIDES TOGETHER UNLESS OTHERWISE STATED.

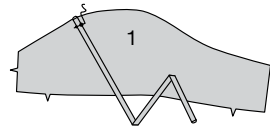
SEWING DIRECTIONS

TOP A

1. Fold **SHOULDER STRAP** (3) in half lengthwise, **RIGHT** sides together. Stitch long edge in a 1/4" (6mm) seam.



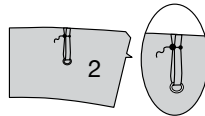
2. Turn **RIGHT** side out. Press. Pin strap to upper edge of **FRONT** (1), matching large and small dots, having raw edges even. Baste.



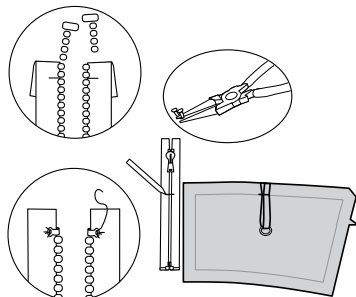
3. Fold **LOOP** (4) in half lengthwise, **RIGHT** sides together. Stitch long edge in a 1/4" (6mm) seam. Turn **RIGHT** sides out. Press. Insert one end through "O" ring, bringing ends together. Baste.



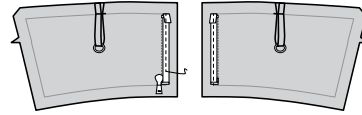
4. On **OUTSIDE**, pin loop to **BACK** (2), matching large and small dots. Baste.



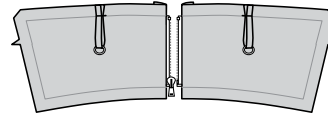
NOTE: It may be necessary to shorten zipper. To make new top stop, place zipper along opening edge with bottom stop even with lower seamline. Mark placement of new top stop at upper seamline. Bring pull tab below upper edge and remove teeth above marking for new top stop. Bend a straight metal eye with pliers and sew securely to each tape at new marking, as shown.



5. Open and separate zipper. On **OUTSIDE**, pin zipper, face down, along back opening edges. Have the center of zipper tape over the seamline with the zipper teeth away from the back edge. Place the top stop at the upper seamline, turning under upper edge of tape even with seamline, and the bottom stop at the lower seamline. Stitch along center of tape.

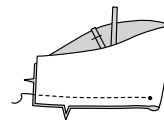


6. Turn seam allowance to inside, turning zipper out. Press.

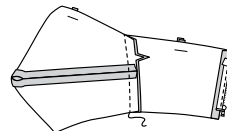


RIGHT HALF OF TOP

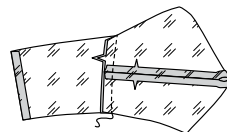
7. With **RIGHT** sides together, fold **RIGHT** front in half, matching notches, and small dots on lower edges. Stitch lower edge leaving open between small dot and fold, keeping strap free. Press seam open turning under seam allowances between small dots.



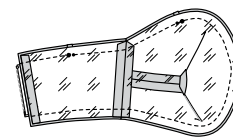
8. Open and separate back zipper. Pin **RIGHT** back to **RIGHT** front at side edges. Stitch.



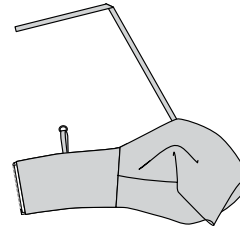
9. Stitch lower edges of **RIGHT** front **LINING** together in same manner as right front. Stitch **RIGHT** front lining to **RIGHT** back **LINING** at sides. Turn in 5/8" (1.5cm) on back edge of back lining. Press.



10. With **RIGHT** sides together, pin lining to **RIGHT** front and back, matching large and small dots, having raw edges even. Stitch, leaving back edges open. Trim.

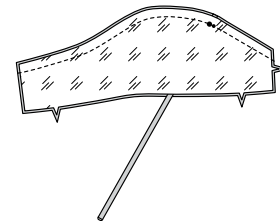


11. Turn **RIGHT** side out and lining to inside. Press.

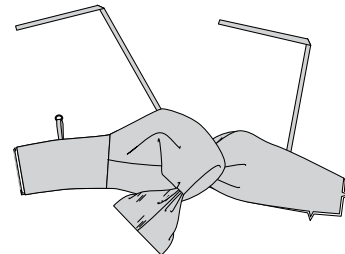


LEFT HALF OF TOP

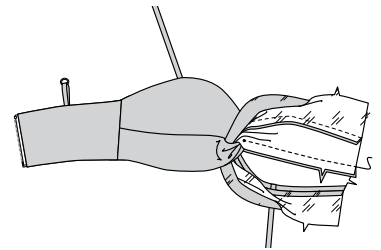
12. Pin **LEFT** front **LINING** to **LEFT** front at upper edge matching large and small dot. Stitch. Trim.



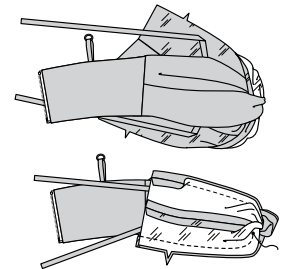
13. With **RIGHT** side up, slip unnotched end of left front through opening in right front between small dots.



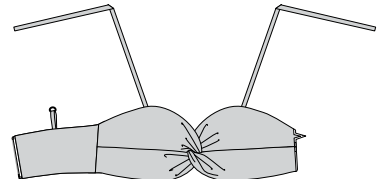
14. Open out lining. Fold left front in half matching notches and small dots on lower edges. Stitch lower edges of left front, **RIGHT** sides together, leaving open between small dot and fold.



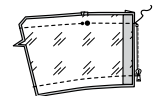
15. Bring the **LEFT** front **LINING** over right half of top and pin the lower edges of left front lining, **RIGHT** sides together, matching notches and small dots. Stitch lower edge of left front lining to small dots. Trim.



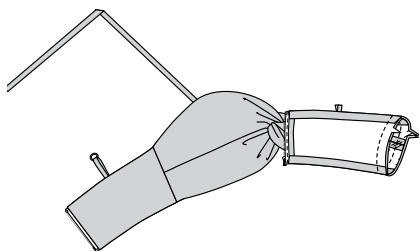
16. Turn left front **RIGHT** sides out, twisting to turn lining to underside and straps on top. Press.



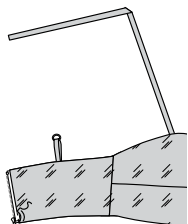
17. Turn in 5/8" (1.5cm) on back edges of **LEFT** back lining. Pin **LEFT** back to **LEFT** back lining, **RIGHT** sides together. Stitch upper and lower edges.



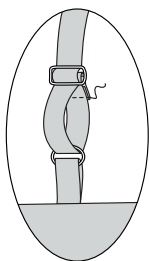
18. With left back **WRONG** sides out, and left front **RIGHT** sides out, insert left front into left back **RIGHT** sides together, matching notches on side edges. Pin. Pin lining edges together at sides. Stitch in one continuous seam. Trim.



19. Turn left back **RIGHT** side out. Press. **SLIPSTITCH** back lining over zipper tape.



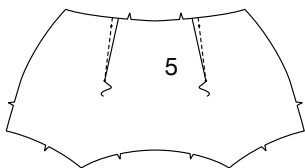
20. Thread end of strap through slider and through "O" ring on back loop. Bring end of strap under top strap and thread over center bar of slider behind strap. Turn under end of strap and stitch to under strap, leaving upper strap free to adjust.



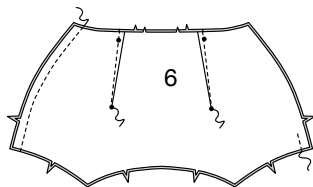
SKIRT B

YOKE FRONT AND BACK

1. Stitch dart in YOKE FRONT (5). Press darts toward center.

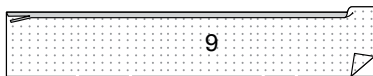


2. Stitch dart in YOKE BACK (6). Press darts toward center. Stitch yoke back to yoke front, **RIGHT** sides together at **RIGHT** side edge. Stitch **LEFT** side edges together 1"(2.5cm) below notch.

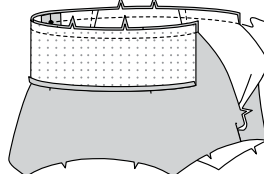


WAISTBAND AND INVISIBLE ZIPPER

3. Fuse **INTERFACING** to **WRONG** side of **WAISTBAND** (9), following manufacturer's instructions. Turn under 1/2"(1.3cm) on long unnotched edge of waistband. Press. Trim pressed edge to 3/8"(1cm).



4. Pin waistband to yoke, **RIGHT** sides together, matching notches, centers, and small dot to right side seam, having raw edges even. Stitch. Trim. Turn seam toward waistband, turning waistband up.

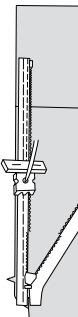


NOTE: Stitch the invisible zipper using an invisible zipper foot. If the zipper is longer than the zipper opening, adjust after the zipper is inserted.

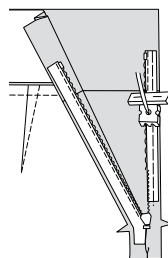
5. Turn under upper ends of zipper tape. Baste.



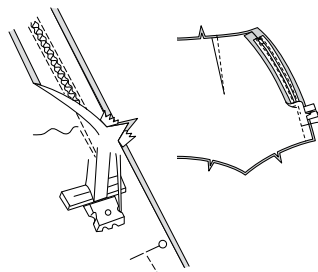
6. Open the zipper and press the tape using a cool iron. On **OUTSIDE**, pin **RIGHT** side of the zipper face down on the **RIGHT** side of the zipper opening. Have the coil along the seam line, the tape within the seam allowance and the top stop 3/4"(2cm) below **FOLDLINE** on waistband, as shown. Hand-baste along center of the tape. Position zipper foot at the top of the zipper with **RIGHT** groove of the foot over coil. Stitch along tape to the notch. Back-stitch to reinforce.



7. Pin the remaining half of the zipper to the **LEFT** side of the zipper opening in same manner. Make sure the upper and lower edges of the garment are even. Hand-baste along the center of the tape. Position zipper foot at the top of the zipper with **LEFT** groove over the coil. Stitch along tape to the notch. Back-stitch to reinforce.



8. Close zipper and check that it is invisible from the **OUTSIDE**. Pull the free ends of the zipper tape away from the seam allowance. Pin remaining side seam together below zipper. Position zipper foot all the way to the **LEFT** so the needle goes down through the outer notch of the foot. Start stitching seam 1/4"(6mm) above lowest stitch and slightly to the **LEFT**. Stitch remainder of seam connecting with previous stitches.



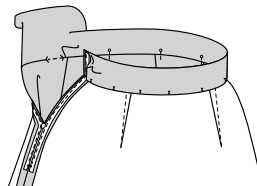
9. If the zipper is longer than the opening, using a strong thread, hand-sew a few small stitches across ends of coils at end of opening. Trim away lower end of zipper tape to within 5/8"(1.5cm) of hand-stitches.



10. If you prefer, open out each seam allowance at end of zipper and stitch tape to seam allowance.

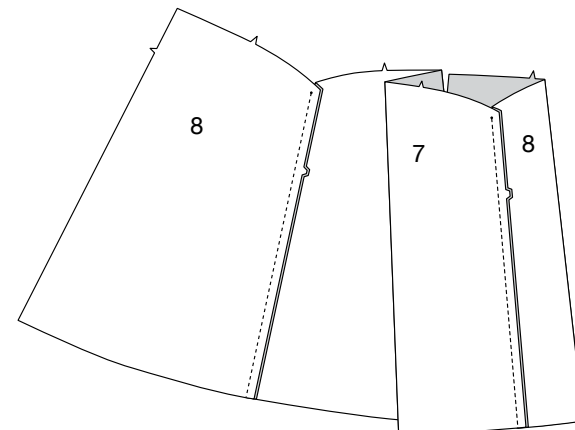


11. Turn in seam allowance on ends of waistband above zipper. Press. Fold waistband, **WRONG** sides together, along foldline. Pin pressed edge of waistband over seam, placing pins on **OUTSIDE**. **SLIPSTITCH** pressed ends of waistband to zipper tape, clearing zipper teeth. On **OUTSIDE**, stitch in the ditch of the waistband seam, catching in free edge of waistband on inside.

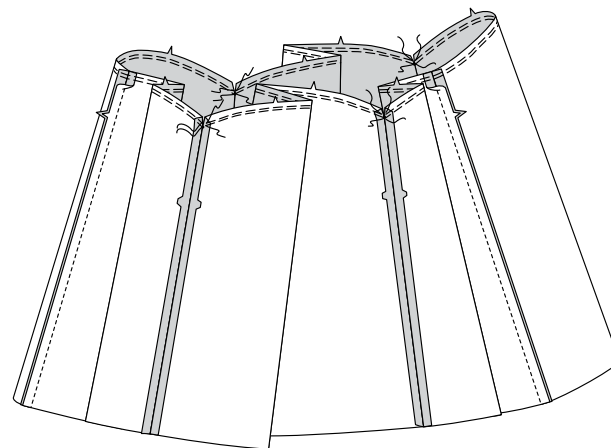


SKIRT

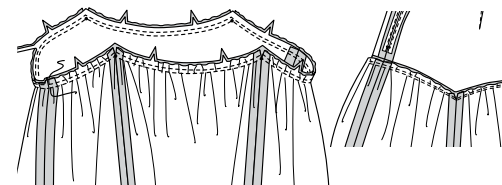
12. For **FRONT**, stitch two **SIDE FRONT** AND **SIDE BACK** (8) sections to side edges of one **FRONT** AND **BACK** (7) below small dots. For **BACK**, stitch remaining side front and side back sections to remaining front and back section at sides in same manner.



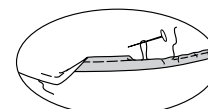
13. Stitch front to back at sides. **GATHER** upper edge of skirt, breaking stitching at small dots.



14. With **RIGHT** sides together, pin skirt to lower edge of yoke matching centers, side seams and small dots. Adjust gathers. Stitch. Stitch again 1/4"(6mm) away in seam allowance. Trim close to second stitching. Press seam toward yoke.



15. Make a **NARROW HEM** on lower edge of skirt.





Congrats!

You've completed your sewing adventure

SHARE YOUR LOOK



Post your pattern and tag us
[@simplicity_creative_group](#) and [#knowMepatterns](#)
for a chance to be featured on our social media.

Look for more PDF patterns at [simplicity.com](https://www.simplicity.com)

Have a question or need help with your sewing project call us at
1-800-782-0323



KnowMe ©2023 a division of IG Design Group Americas Inc. • Atlanta, GA 30342 USA www.thedesigngroup.com • All Rights Reserved. www.mccall.com • Made in the U.S.A. Fabriqué aux États-Unis.
To be used for individual private home use only and not for commercial or manufacturing purposes. • A usage privé seulement et non à des fins commerciales ou de production en série. • Para uso privado solamente, no se puede utilizar con propósitos de comercialización o de producción en serie.