

AARONICA B. COLE

knowME[™]
BY MIMI G

ME2072



Scan QR code for a Sew-Along video tutorial.



@needleandthebelle

Designed and printed in USA

Easy

MISSES' AND WOMEN'S JUMPSUIT AND DRESS

Suggested Fabrics: Chambray, Charmeuse, Cotton Blends, Crepe de Chine, Gauze, Linen Blends, Silky Types. **Lining:** Cotton Blends, Polyester Blends. **Interfacing:** Lightweight Fusible.

Notions: A,B: One 12" (30cm) invisible zipper (cut to fit), three (optional) $\frac{5}{8}$ " (1.5cm) buttons.

MISSES' SIZES	10	12	14	16	18
EUROPEAN	36	38	40	42	44

BODY MEASUREMENTS: Select pattern size based on body measurements

Bust	32½	34	36	38	40	Ins.
Waist	25	26½	28	30	32	"
Hip	34½	36	38	40	42	"
Back-neck to waist	16	16¼	16½	16¾	17	"
Lining A,B	45**	¾	¾	¾	¾	Yd.
Interfacing A,B	20"	¾	¾	¾	¾	"
Jumpsuit A	60**	3	3	3	3	Yds.
Dress B	60**	3½	3½	3½	3½	Yds.

WOMEN'S SIZES	20W	22W	24W	26W	28W	30W	32W	34W	36W	38W
EUROPEAN	46	48	50	52	54	56	58	60	62	64

BODY MEASUREMENTS: Select pattern size based on body measurements

Bust	42	44	46	48	50	52	54	56	58	60	Ins.
Waist	35	37	39	41½	44	46½	49	51½	53	54½	"
Hip	44	46	48	50	52	54	56	58	60	62	"
Back-neck to waist	17¼	17¾	17½	17¾	17¾	17¾	18	18½	18½	18½	"
Lining A,B	45**	¾	¾	¾	1½	1½	1½	1½	1½	1½	Yds.
Interfacing A,B	20"	¾	¾	¾	¾	¾	¾	1	1	1	"
Jumpsuit A	60**	3½	3½	3½	3¾	3¾	3¾	3¾	4½	4½	Yds.
Dress B	60**	4½	4½	4½	4½	4½	4½	4½	4½	4½	Yds.

NOTE: Please refer to the sewing instructions for **FINISHED GARMENT MEASUREMENTS**.

*with nap **without nap

Facile

COMBINAISON ET ROBE POUR JEUNES FEMMES ET FEMMES

Tissus Conseillés: Chambray, Charmeuse, Cottonnades, Crêpe de chine, Gaze, Lin mélangé, Tissus soyeux. **Doublure:** Cottonnades, mélanges de polyester. **Entoilage:** Thermocollant léger.

Mercerie: A,B: 1 fermeture à glissière invisible de 30cm (coupée pour ajuster), 3 boutons de 1.5cm (facultatif).

TAILLES (J. FEMMES)	10	12	14	16	18
FRANÇAISES	38	40	42	44	46
EUROPÉEN	36	38	40	42	44

MESURES DU CORPS: Choisissez la taille du patron basée sur les mesures du corps

Poitrine	83	87	92	97	102	cm
Taille	64	67	71	76	81	"
Hanches	88	92	97	102	107	"
Dos du cou à la taille	40.5	41.5	42	42.5	43	"
Doublure A,B	115cm**	0.7	0.7	0.7	0.7	m
Entoilage A,B	51cm	0.6	0.6	0.6	0.6	"
Combinaison A	150cm*	2.7	2.7	2.7	2.7	m
Robe B	150cm*	2.9	2.9	2.9	2.9	m

TAILLES (FEMMES)	20W	22W	24W	26W	28W	30W	32W	34W	36W	38W
FRANÇAISES	48	50	52	54	56	58	60	62	64	66
EUROPÉEN	46	48	50	52	54	56	58	60	62	64

MESURES DU CORPS: Choisissez la taille du patron basée sur les mesures du corps

Poitrine	107	112	117	122	127	132	137	142	147	152	cm
Taille	89	94	99	105	112	118	124	131	134	138	"
Hanches	112	117	122	127	132	137	142	147	152	157	"
Dos du cou à la taille	44	44	44.5	45	45	45.5	46	46	46.5	47	"
Doublure A,B	115cm**	0.8	0.8	0.8	1.0	1.0	1.0	1.1	1.1	1.1	m
Entoilage A,B	51cm	0.7	0.7	0.7	0.8	0.8	0.8	0.9	0.9	0.9	"
Combinaison A	150cm*	3.3	3.3	3.3	3.4	3.4	3.4	3.5	3.5	3.9	m
Robe B	150cm*	3.8	3.8	3.8	3.8	3.8	3.8	3.8	4.0	4.0	m

NOTE: S'il vous plaît, reportez-vous au instructions de couture pour les **MESURES DU VÊTEMENTS FINI**.

*avec sens **sans sens



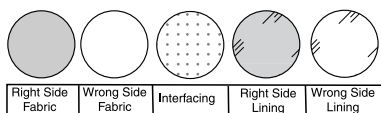
A



B

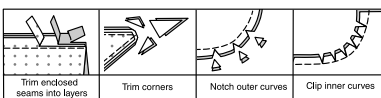
SEWING INFORMATION

FABRIC KEY



SEAM ALLOWANCES

Use 5/8" (1.5cm) seam allowances unless otherwise indicated.



PIN AND FIT

Pin or baste seams, **RIGHT SIDE TOGETHER**, matching notches. Fit garment before stitching major seams.

PRESS

Press seam allowances flat; then open unless otherwise stated. Clip where necessary so they lie flat.

GLOSSARY

Sewing methods in **BOLD TYPE** have Sewing Tutorial Video available. Scan QR CODE to watch videos:

EASE/GATHER - Stitch along seamline, using long machine stitches. Pull thread ends when adjusting to fit.

EDGE STITCH - Stitch close to finished edge or seam.

NARROW HEM - Turn in hem; press, easing in fullness if necessary. Open out hem. Turn in again so raw edge is along crease; press. Turn in along crease; stitch.

REINFORCE - Stitch along seamline where indicated in sewing instructions, using small machine stitches.

SLIPSTITCH - Slide needle through a folded edge, then pick up a thread of underneath fabric.

TOPSTITCH - On outside, stitch 1/4" (6mm) from edge, seam or previous stitching, using presser foot as guide, or stitch where indicated in instructions.

UNDERSTITCH - Open out facing or underside of garment; stitch to seam allowance close to seam.



@needleandthebelle

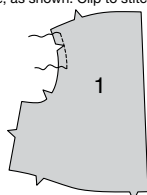
SEWING DIRECTIONS

JUMPSUIT A, DRESS B

NOTE: Under each sub-heading, the first View will be illustrated, unless otherwise indicated.

BODICE

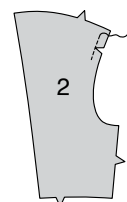
1. REINFORCE BODICE FRONT (1) along armhole seamline 1" (2.5cm) below shoulder seamline, as shown. Clip to stitching.



2. Turn in seam allowance on armhole edge above clip, as shown. Press.



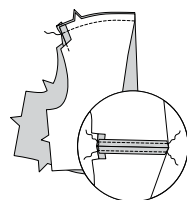
3. REINFORCE BODICE BACK (2) along armhole seamline 1" (2.5cm) below shoulder seamline, as shown. Clip to stitching.



4. Turn in seam allowance on armhole edge above clip, as shown. Press.



5. Stitch bodice front to bodice back at shoulders. Press seam open. To form casings for ties, stitch shoulder seam allowances in place 1/4" (6mm) from raw edge, as shown.



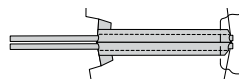
6. With right sides together, fold TIE (6) in half lengthwise. Stitch in 1/4" (6mm) seam, leaving one end open. Trim.



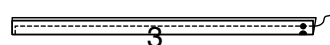
7. To turn, fasten a heavy thread securely to closed end of tie. Push needle (eye first) through tie. Press. Baste raw edges.



8. Insert one tie into each casing, having raw edges even. Baste raw edges.



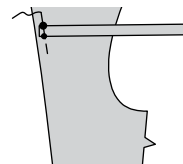
9. With right sides together, fold TIE END (3) in half lengthwise. Stitch in a 3/8" (1cm) seam, leaving end with symbols open. Trim.



10. To turn, fasten a heavy thread securely to closed end of tie end. Push needle (eye first) through tie end. Press.



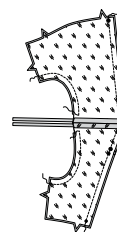
11. On outside, pin tie end to bodice back, matching symbols. Baste.



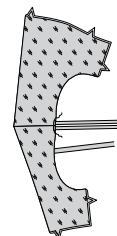
12. Stitch bodice front LINING (1) to bodice back LINING (2) at shoulders.



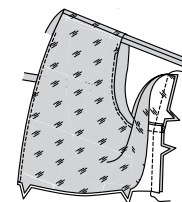
13. With right sides together, pin bodice lining to bodice, matching symbols and seams. Stitch front and back edges. Stitch armhole edge, ending stitching at clips. Trim. **UNDERSTITCH** lining as far as possible.



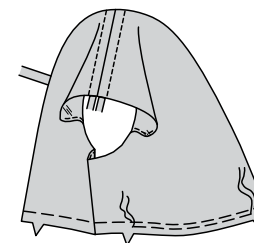
14. Turn. Press, pressing in remainder of seam allowances on armhole edge of lining. **SLIPSTITCH** opening, leaving ties free.



15. Open out lining at sides. Pin side lining edges together; pin side bodice edges together. Stitch in one continuous seam.

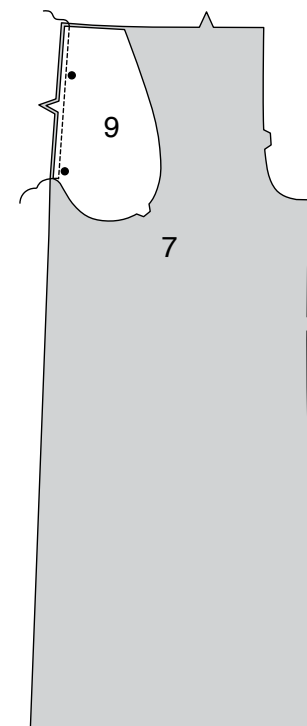


16. Turn down lining. Baste raw edges. **GATHER** lower edge of bodice front between notches.

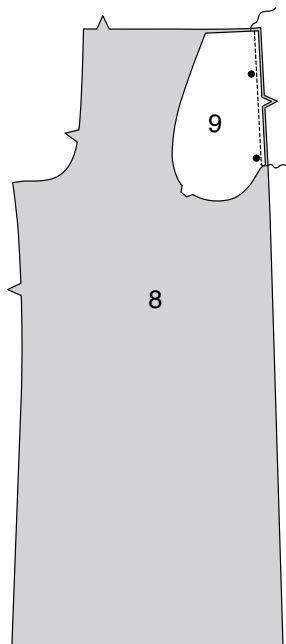


PANTS AND MIDRIFF A

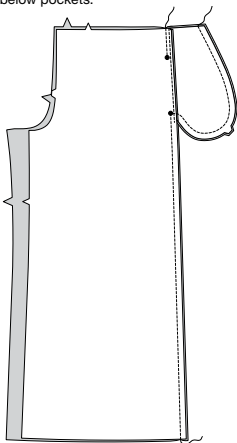
17. Stitch one **POCKET (9)** section to each **PANTS FRONT (7)** at side in a 1/4" (6mm) seam. Press seams toward pockets.



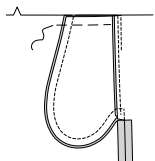
18. Stitch one remaining pocket section to each PANTS BACK (8) at side in a 1/4" (6mm) seam. Press seams toward pockets.



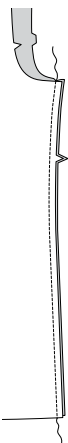
19. Stitch pants front and pants back together at sides, leaving open between large dots. Stitch pocket edges together to side seams. Clip back seam allowances below pockets.



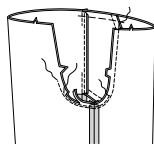
20. Turn pockets toward front along seamlines; press. Press seam allowance open below clip. Baste across upper edges.



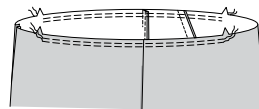
21. Stitch pants front to pants back at inner leg edge.



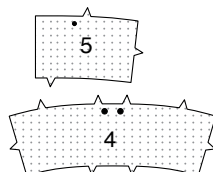
22. For crotch seam, turn one pant leg right side out. Slip inside remaining pant leg. Stitch crotch seam, ending stitching 1" (2.5cm) below notch on back, as shown. Stitch again 1/4" (6mm) away along curve. Trim close to second stitching.



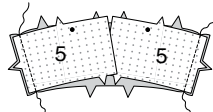
23. GATHER upper edge at each side, between front and back notches, as shown.



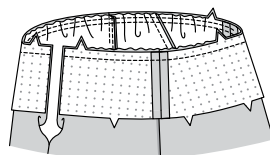
24. Pin INTERFACING (4) and (5) to wrong side of MIDRIFF FRONT (4) and MIDRIFF BACK (5). Fuse, following manufacturer's instructions.



25. Stitch midriff front to midriff backs at sides.



26. With right sides together, pin midriff to upper edge of pants, matching centers, seams and notches. Adjust gathers; baste. Stitch. Press seam toward midriff.



NOTE: Stitch the invisible zipper using an invisible zipper foot.

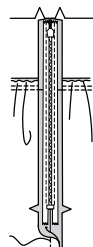
27. Open the zipper and press the tape using a cool iron. On OUTSIDE, pin RIGHT side of the zipper face down on the RIGHT side of the zipper opening. Have the coil along the seam line, the tape within the seam allowance and the top stop 3/4" (2cm) below upper edge, as shown. Hand-baste along center of the tape. Position zipper foot at the top of the zipper with RIGHT groove of the foot over coil. Stitch along tape to the notch. Back-stitch to reinforce.



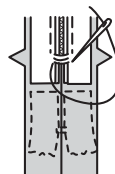
28. Pin the remaining half of the zipper to the LEFT side of the zipper opening in same manner. Hand-baste along the center of the tape. Position zipper foot at the top of the zipper with LEFT groove over the coil. Stitch along tape to the notch. Back-stitch to reinforce.



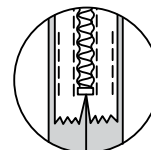
29. Close zipper and check that it is invisible from the OUTSIDE. Pull the free ends of the zipper tape away from the seam allowance. Pin remaining side seam together below zipper. Position zipper foot all the way to the LEFT so the needle goes down through the outer notch of the foot. Start stitching seam 1/4" (6mm) above lowest stitch and slightly to the LEFT. Stitch remainder of seam, connecting with previous stitching.



30. If the zipper is longer than the opening, using a strong thread, hand-sew a few small stitches across ends of coils at end of opening. Trim away lower end of zipper tape to within 5/8" (1.5cm) of hand-stitches.

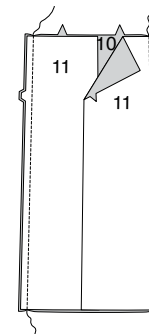


31. If you prefer, open out each seam allowance at ends of zipper and stitch tape to seam allowance.

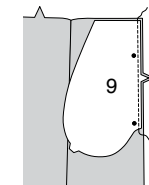


SKIRT AND MIDRIFF B

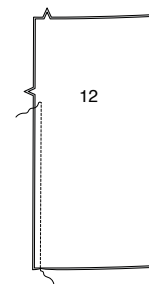
32. Stitch SKIRT SIDE FRONT (11) sections to SKIRT FRONT (10) at side edges.



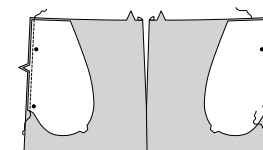
33. Stitch one pocket section to skirt front at each side in a 1/4" (6mm) seam. Press seams toward pockets.



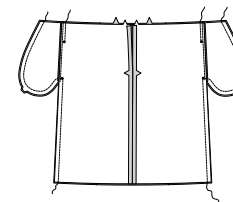
34. Stitch SKIRT BACK (12) sections together at center back leaving open from 1" (2.5cm) below notch to upper edge, as shown.



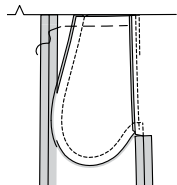
35. Stitch remaining pocket sections to SKIRT BACK (12) at each side in a 1/4" (6mm) seam. Press seams toward pockets.



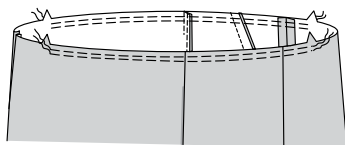
36. Stitch skirt front and skirt back together at sides, leaving open between large dots. Stitch pocket edges together to side seams. Clip back seam allowances below pockets.



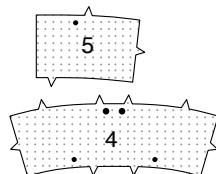
37. Turn pockets toward front along seamlines; press. Press seam open below clip. Baste across upper edges.



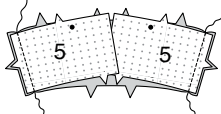
38. GATHER upper edge between notches on back and front, as shown.



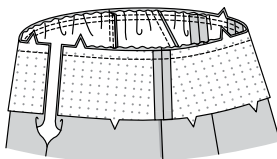
39. Pin INTERFACING (4) and (5) to wrong side of MIDRIFF FRONT (4) and MIDRIFF BACK (5). Fuse, following manufacturer's instructions.



40. Stitch midriff front to midriff backs at sides.



41. With right sides together, pin midriff to upper edge of skirt, matching centers and notches, placing small dots at side front seams. Adjust gathers; baste. Stitch. Press seam toward midriff.

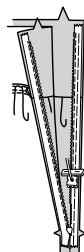


NOTE: Stitch the invisible zipper using an invisible zipper foot.

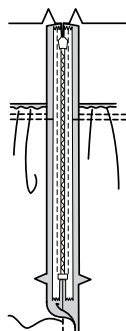
42. Open the zipper and press the tape using a cool iron. On OUTSIDE, pin RIGHT side of the zipper face down on the RIGHT side of the zipper opening at center back. Have the coil along the seam line, the tape within the seam allowance and the top stop 3/4" (2cm) below upper edge, as shown. Hand-baste along center of the tape. Position zipper foot at the top of the zipper with RIGHT groove of the foot over coil. Stitch along tape to the notch. Back-stitch to reinforce.



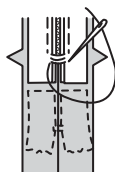
43. Pin the remaining half of the zipper to the LEFT side of the zipper opening in same manner. Hand-baste along the center of the tape. Position zipper foot at the top of the zipper with LEFT groove over the coil. Stitch along tape to the notch. Back-stitch to reinforce.



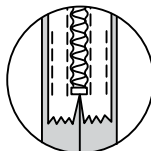
44. Close zipper and check that it is invisible from the OUTSIDE. Pull the free ends of the zipper tape away from the seam allowance. Pin remaining seam together below zipper. Position zipper foot all the way to the LEFT so the needle goes down through the outer notch of the foot. Start stitching seam 1/4" (6mm) above lowest stitch and slightly to the LEFT. Stitch remainder of seam, connecting with previous stitching.



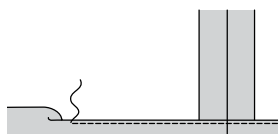
45. If the zipper is longer than the opening, using a strong thread, hand-sew a few small stitches across ends of coils at end of opening. Trim away lower end of zipper tape to within 5/8" (1.5cm) of hand-stitches.



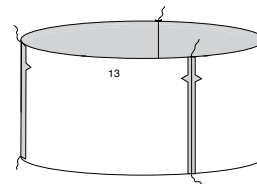
46. If you prefer, open out each seam allowance at ends of zipper and stitch tape to seam allowance.



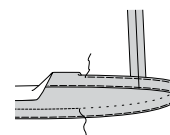
47. Make NARROW HEM at lower edge of skirt.



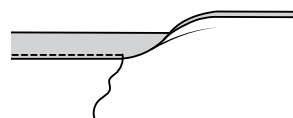
48. Stitch RUFFLE (13) sections together at ends, matching notches.



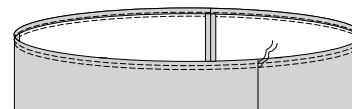
49. Turn up ruffle hem. Baste close to fold. Turn in 1/4" (6mm) on raw edge. Baste hem in place close to upper edge. Press. TOPSTITCH hem along upper basting.



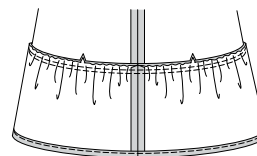
50. Turn in 1/4" (6mm) on upper edge of ruffle. Press. Turn upper edge to inside along foldline. Press. Stitch close to inner pressed edge.



51. GATHER along gathering line.



52. With right sides up, pin ruffle to lower edge of skirt, placing gathering line along hem stitching, having one seam at center back and remaining seams at small dots on front. Adjust gathers. Baste. Stitch along gathering line.

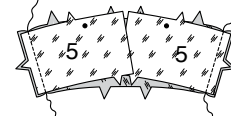


FINISHING

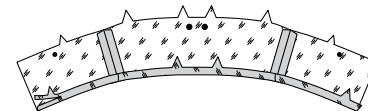
53. With right sides together, pin bodice to midriff, matching symbols, notches and seams. Adjust gathers. Baste.



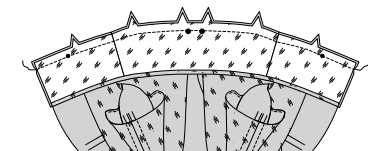
54. Stitch midriff front LINING (4) and midriff back LINING (5) sections together at sides.



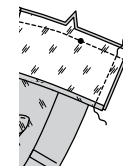
55. Turn in seam allowance on lower edge of midriff lining. Press. Trim pressed seam allowance to 3/8" (1cm).



56. Open out center back opening edges of garment, rolling the zipper teeth away from the opening edge. With RIGHT sides together, pin midriff lining to midriff, over bodice, matching centers and seams. Stitch upper edge. Trim seam.



57. Pin back opening edges together. Using an adjustable zipper foot, stitch 1/2" (1.3cm) from back edges, keeping zipper teeth free. Trim corners. Do not trim back edges. UNDERSTITCH midriff lining.



58. Turn lining and back edges to INSIDE, rolling zipper teeth back in place; press. SLIPSTITCH pressed edge over seam.

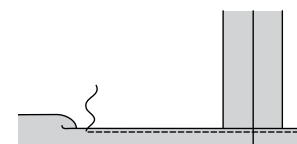


59. OPTIONAL: Sew buttons to midriff front at small dots.



VIEW A:

60. Turn up pants hem. Baste close to fold. Turn in 1/4" (6mm) on raw edge. Baste hem in place close to upper edge. Press. TOPSTITCH hem along upper basting.





Congrats!

You've completed your sewing adventure

SHARE YOUR LOOK



Post your pattern and tag us
[@simplicity_creative_group](#) and [#knowMepatterns](#)
for a chance to be featured on our social media.

Look for more PDF patterns at [simplicity.com](https://www.simplicity.com)

Have a question or need help with your sewing project call us at
1-800-782-0323



KnowMe ©2023 a division of IG Design Group Americas Inc. • Atlanta, GA 30342 USA www.thedesigngroup.com • All Rights Reserved. www.mccall.com • Made in the U.S.A. Fabriqué aux États-Unis.
To be used for individual private home use only and not for commercial or manufacturing purposes. • A usage privé seulement et non à des fins commerciales ou de production en série. • Para uso privado solamente, no se puede utilizar con propósitos de comercialización o de producción en serie.