



ME2071



Scan QR code for a Sew-Along video tutorial.



@sinsofmany



Designed and printed in USA

MEN'S VEST AND SHORTS											Average	
Suggested Fabrics: Cotton Blends, Gabardine, Linen Blends, Seersucker, Stretch Wovens, Twill. Lining: Cotton Blends, Polyester Blends. Interfacing: Lightweight Fusible.												
Notions: A: Four ¾" (1.5cm) buttons, ¾ yd. (0.4m) of 1" (2.5cm) elastic. B: One 7" (18cm) zipper (adjust to fit), 1½ yds. (1.3m) of 1½" (4cm) elastic, one ¾" (1.5cm) button.												
Sizes	38	40	42	44	46	48	50	52	54	56		
BODY MEASUREMENTS: Select pattern size based on body measurements												
Chest	38	40	42	44	46	48	50	52	54	56	Ins.	
Waist	28	30	36	39	42	44	46	48	50	52	"	
Hip	39	41	43	45	47	49	51	53	55	57	"	
Vest A	45** 60**	1½ 1½	1¾ 1½	1¾ 1½	1¾ 1½	1¾ 1½	2 1¾	2¼ 1¾	2¾ 1¾	2¾ 1¾	Yds. 1¾"	
Contrast (Collar)	45/60** - ¾yd.											
Lining	45**	1¾	1¾	1¾	1¾	1¾	1¾	2	2	2¾	Yds.	
Interfacing	45"	1¾	1¾	1¾	1¾	1¾	1¾	1¾	1¾	1¾	1¾	"
Shorts B	45** 60**	1½ 1½	1½ 1½	1¾ 1¾	1¾ 1½	1¾ 1½	1¾ 1½	2¼ 1¾	2¼ 1¾	2¾ 1¾	Yds. 1¾"	
Contrast (Welts, Side Back Panels)	45/60**	¾	¾	¾	¾	¾	¾	¾	¾	¾	Yd.	
Lining	45**	- ½ yd.										
Interfacing	20"	- ½ yd.										
FINISHED GARMENT MEASUREMENTS (Includes Design and Wearing Ease)												
A Chest	42	44	46	48	50	52	54	56	58	60	Ins.	
A Waist	40	42	44	46	48	50	52	54	56	58	"	
B Hip	43½	45½	47½	49½	51½	53½	55½	57½	59½	61½	"	
Width, lower edge												
Vest A	41	43	45	47	49	51	53	55	57	59	Ins.	
Width, each leg												
Shorts B	25½	26½	27½	29¼	30¾	32	33¾	34¾	36½	37½	Ins.	
Finished back length from base of neck												
Vest A	21¾	22	22 ¼	22 ½	22 ¾	23	23¼	23½	23¾	24	Ins.	
Finished side length from waist												
Shorts B	17¾	18	18¼	18½	18¾	19	19¼	19½	19¾	20	Ins.	

*with nap **without nap

Moins Facile

GILET ET SHORT POUR HOMMES

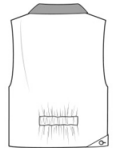
Tissus Conseillés: Cotonnades, Gabardine, Toile de lin mélangés, Seersucker, Tissus tissés extensibles Twill.

Doublure: Cotonnades, Mélanges de polyester. Entoilage: Thermocollant léger.

Merci: A: 4 boutons de 1.5cm, 0.4m d'élastique de 2.5cm. B: 1 fermeture à glissière de 18cm (adaptez pour ajuster), 1.3m d'élastique de 4cm, 1 bouton de 1.5cm.

Tailles	38	40	42	44	46	48	50	52	54	56	
MESURES DU CORPS: Choisissez la taille du patron basée sur les mesures du corps											
Poitrine	97	102	107	112	117	122	127	132	137	142	cm
Taille	82	87	92	99	107	112	117	122	127	132	"
Hanches (23cm au-dessous de la taille)											
	99	104	109	115	119	124	128	135	140	145	cm
Gilet A	115cm*	1.5	1.6	1.6	1.7	1.7	1.8	2.1	2.1	2.2	m
	150cm*	1.4	1.4	1.4	1.5	1.5	1.5	1.6	1.6	1.6	m
Contraste (Col) 115/150cm* - 0.8m											
Doublure	115cm*	1.5	1.5	1.5	1.6	1.6	1.7	1.7	1.8	1.8	m
Entoilage	115cm	1.0	1.0	1.1	1.1	1.1	1.1	1.1	1.3	1.3	m
Shorts B	115cm*	1.4	1.4	1.4	1.4	1.5	1.5	1.5	2.1	2.1	m
	150cm*	1.1	1.1	1.3	1.3	1.4	1.4	1.4	1.5	1.5	m
Contraste (Passepoils, Panneaux latéraux arrière)											
	115/150cm*	0.6	0.6	0.6	0.6	0.6	0.6	0.6	0.7	0.7	m
Doublure	115cm*	- 0.3m									
Entoilage	51cm	- 0.5m									
MESURES DES VÊTEMENTS FINI (Motif et aisance de port compris)											
A Poitrine	107	112	117	122	127	132	137	142	147	152	cm
A Taille	102	107	112	117	122	127	132	137	142	147	"
B Hanches	110	116	121	126	131	136	141	146	151	156	"
Largeur à l'ourlet											
Gilet A	104	109	114	119	124	130	135	140	145	150	cm
Largeur, chaque jambe											
Short B	64	67	71	74	78	81	85	88	92	95	cm
Longueur finie – dos, votre nuque à l'ourlet											
Gilet A	55	56	57	57	58	58	59	60	60	61	cm
Longueur finie – côté, taille à l'ourlet											
Short B	45	46	46	47	48	48	49	50	50	51	cm

*avec sens **sans sens



A



B

English

ME2071

Page 1 of 4

SINS OF MANY

knowME™

BY mimi g

1-800-782-0323

SCAN QR CODE FOR A STEP-BY-STEP VIDEO TUTORIAL

@sinsofmany

20 PATTERN PIECES

1 Front-A

2 Welt-A,B

3 Pocket Facing-A,B

4 Pocket-A,B

5 Back-A

6 Collar-A

7 Elastic Guide for Back-A

8 Front-B

9 Pocket Facing-B

10 Pocket Interfacing-B

11 Side Front and Pocket-B

12 Fly Facing-B

13 Underlap-B

14 Back-B

15 Side Back Panel-B

16 Carrier-B

17 Right Front Waistband-B

18 Left Front Waistband-B

19 Casing-B

20 Elastic Guide for Waist-B

PATTERN MARKINGS

GRAINLINE: Place on straight grain of fabric, parallel to selvage or fold.

FOLDLINE: Place line on fold of fabric.

BUTTONHOLE MARKING: Indicates exact length and placement of buttonholes.

BUTTON MARKING: Indicates button placement.

NOTCHES AND SYMBOLS: For matching seams and construction details.

Indicates the Bustline, Waistline, Hip and/or Biceps. Measurements refer to circumference of Finished Garment (Body Measurement + Wearing Ease + Design Ease). Adjust pattern if necessary. The measurement excludes pleats, tucks, darts and seam allowances.

SEAM ALLOWANCE: 5/8" (1.5cm) included unless otherwise indicated, but not printed on tissue.

ADJUST IF NECESSARY

Lengthen or Shorten at adjustment lines (==) or where indicated on pattern. If substantial length is added, you may need to purchase additional fabric.

TO SHORTEN: Crease along adjustment line. Make a fold half the amount needed. Tape in place.

TO LENGTHEN: Slash between adjustment lines. Spread amount as needed, keeping edges parallel. Tape over paper.

When Alteration lines are not on tissue, lengthen or shorten at lower edge.

CUTTING AND MARKING

SHRINK FABRIC if not labeled pre-shrunk. Press.

CIRCLE LAYOUT for View, Size, Fabric Width.

Use **WITH NAP** layout for fabrics with one-way designs, nap, pile or surface shading. Because most knits have surface shading, a with nap layout is used.

For **DOUBLE THICKNESS (WITH FOLD)** - fold fabric with right sides together.

*** DOUBLE THICKNESS (WITHOUT FOLD)** - For fabrics with nap, fold fabric crosswise, right sides together. Mark as shown. Cut along crosswise fold of fabric (A). Turn upper layer 180° so arrows go in same direction and place over lower layer, right sides together (B).

For **SINGLE THICKNESS** - place fabric right side up. (For Fur Pile fabrics, place pile side down.)

★ Cut other pieces first, allowing enough fabric to cut this piece. Open fabric. For "Cut 1" pieces, cut piece once on single layer of fabric with piece face up on right side of fabric.

Pattern may have cutting lines for several sizes. Select the proper cutting line or pattern pieces for your size.

Before **CUTTING** place all pieces on fabric according to layout. Pin. (Layouts show approximate position of pattern pieces; position may vary according to your pattern size.) Cut **ACCURATELY**, cutting notches outward.

Before removing pattern, **TRANSFER MARKINGS** and lines of construction to Wrong Side of fabric, using the Pin and Chalk Pencil method or Tracing Paper and Dressmaker Wheel. Markings needed on right side of fabric should be thread traced.

NOTE: Broken-line boxes (a! b! c!) in layouts represent pieces cut by measurements provided.

CUTTING LAYOUTS

RIGHT SIDE OF PATTERN	WRONG SIDE OF PATTERN	RIGHT SIDE OF FABRIC	WRONG SIDE OF FABRIC
-----------------------	-----------------------	----------------------	----------------------

VEST A

use pieces: 1 2 3 4 5

45" (115 cm) with nap sizes 38 40 42 44 46 48

45" (115 cm) with nap sizes 50 52 54 56

60" (150 cm) with nap all sizes

INTERFACING A

use pieces: 1 2 6

45" (115 cm) all sizes

CONTRAST: SIDE BACK PANEL

use pieces: 2 15

45" (115 cm) with nap all sizes

LINING A

use pieces: 1 5

45" (115 cm) without nap all sizes

SHORTS B

use pieces: 3 4 8 11 12 13 14 16 17 18 19

CUT ONE OF PIECES 12 13 16 17 18 19

45" (115 cm) with nap sizes 38 40 42 44 46 48 50

45" (115 cm) with nap sizes 52 54 56

CONTRAST: COLLAR

use pieces: 6

45", 60" (115 cm, 150 cm) with nap all sizes

INTERFACING B

use pieces: 2 10 12 17 18

20" (51 cm) all sizes

LINING B

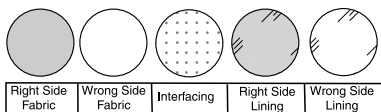
use pieces: 9

45" (115 cm) without nap all sizes

© 2024 KnowMe® an IG Design Group Americas, Inc. brand. All Rights Reserved. Printed in U.S.A.

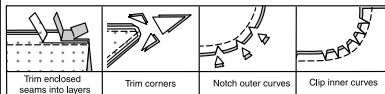
SEWING INFORMATION

FABRIC KEY



SEAM ALLOWANCES

Use 5/8" (1.5cm) seam allowances unless otherwise indicated.



PIN AND FIT

Pin or baste seams, **RIGHT SIDE TOGETHER**, matching notches. Fit garment before stitching major seams.

PRESS

Press seam allowances flat; then open unless otherwise stated. Clip where necessary so they lie flat.

GLOSSARY

Read General Directions on page 1 before you begin.

EDGE STITCH - Stitch close to finished edge or seam.

FINISH - Stitch 1/4" (6mm) from raw edge and finish with one of the following: (1) Pink OR (2) Overcast OR (3) Turn in along stitching and stitch close to fold OR (4) Overlock.

OPTIONAL FOR HEMS: Apply Seam Binding.

REINFORCE - Stitch along seamline where indicated in sewing instructions, using small machine stitches.

SLIPSTITCH - Slide needle through a folded edge, then pick up a thread of underneath fabric.

STAYSTITCH - Stitch 1/8" (3mm) from seamline in seam allowance (usually 1/2" (13mm) from raw edge).

TOPSTITCH - On outside, stitch 1/4" (6mm) from edge, seam or previous stitching, using presser foot as guide, or stitch where indicated in instructions.

UNDERSTITCH - Open out facing or underside of garment; stitch to seam allowance close to seam.

PATTERN PIECES WILL BE IDENTIFIED BY NUMBERS THE FIRST TIME THEY ARE USED.

STITCH SEAMS WITH RIGHT SIDES TOGETHER UNLESS OTHERWISE STATED.



SCAN QR CODE
FOR A
STEP-BY-STEP
VIDEO TUTORIAL

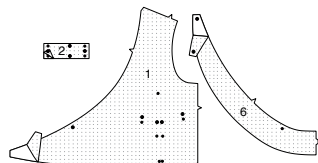
@sinsofmany

SEWING DIRECTIONS

VEST A

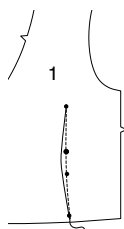
INTERFACING

1. Fuse INTERFACING to wrong side of all matching FABRIC pieces, following manufacturer's instructions.

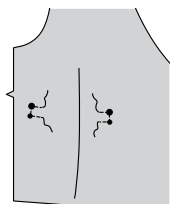


FRONT AND BACK

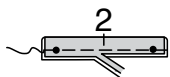
2. Stitch darts in FRONT (1). Press toward center.



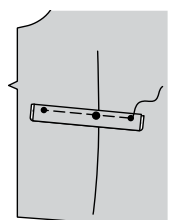
3. REINFORCE front along corners of stitching lines, pivoting at small dots.



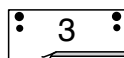
4. With wrong sides together, fold each WELT (2) section in half lengthwise. Baste raw edges together in a 3/8" (1cm) seam. Trim seam allowances on long edges to a scant 1/4" (6mm).



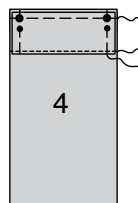
5. Pin welts to front, placing seamlines along lower stitching lines. Baste.



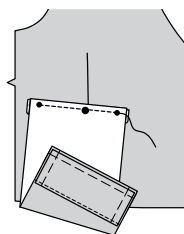
6. Turn under 1/4" (6mm) on long edge without symbols of POCKET FACING (3); press.



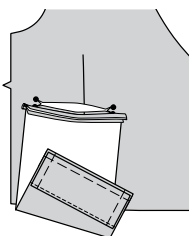
7. Pin wrong side of pocket facing to right side of POCKET (4), matching dots and having raw edges even. **EDGE STITCH** pressed edge in place. Baste raw edges together.



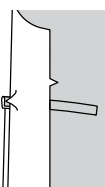
8. With right sides together, pin lower end of pocket to front along lower stitching line, matching symbols. Stitch along stitching line between small dots.



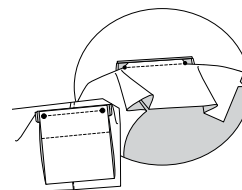
9. Slash along line between welts, clipping diagonally to small dots, being careful not to cut welts.



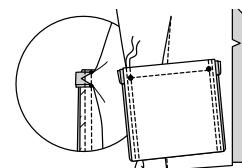
10. Turn pocket and triangular ends to inside, pulling ends of welts between triangular ends, as shown. Press.



11. With right sides together, fold pocket along foldline, having raw edges even at sides. Pin pocket to front over welt, along upper stitching line, matching symbols. Stitch along seam line between small dots, keeping front free.

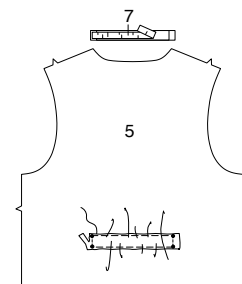


12. Stitch pocket edges together; catching welts and triangular ends, keeping front free. Stitch again 1/4" (6mm) away in seam allowance, as shown.



13. Cut a piece of elastic, the length of ELASTIC GUIDE FOR BACK (7).

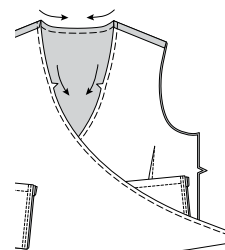
On inside, pin elastic to BACK (5), stretching elastic matching seam allowances to small dots. Stitch ends of elastic in place. Baste long edges of elastic. Trim away ends of elastic.



14. Stitch front to back at shoulder seams.

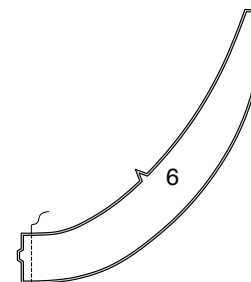


15. STAYSTITCH neck edge of vest.

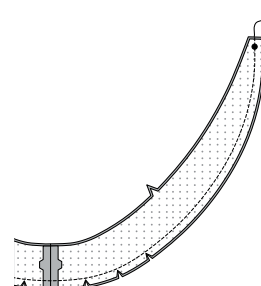


COLLAR

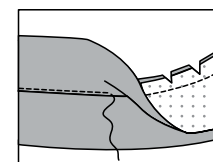
16. With right sides together, stitch COLLAR (6) sections together at center back, matching notches.



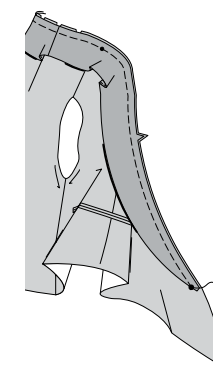
17. Stitch center back seam of collar facing sections. With right sides together, pin facing to collar matching center back seam and markings. Stitch leaving notched edge open. Trim seam, clip curves.



18. UNDERSTITCH facing.



19. With under-stitching facing down, pin collar to neck edge of vest matching large dots and notches. Clip to stay-stitching if necessary. Baste.



FRONT AND BACK LINING

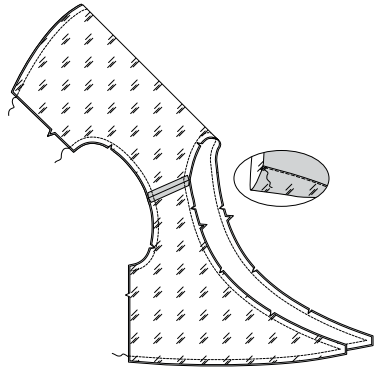
20. Stitch front to back lining at shoulder seams.



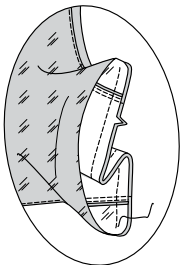
21. With right sides together, pin lining to vest. Stitch lower, front opening, neck and armhole edges. Trim.

UNDERSTITCH lining as far as possible.

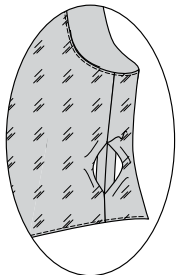
Turn lining to inside by pulling front sections through shoulders and both out one side opening. Press.



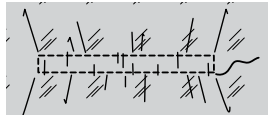
22. Starting 2" (5cm) above armhole seam and ending 2" (5cm) below seam at lower edge, stitch back to front sections at sides and lining edges together in one continuous seam, as shown.



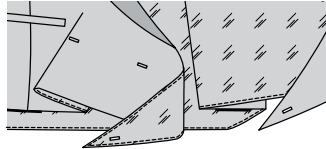
23. Turn in seam allowance on side edges of lining. **SLIPSTITCH** edges together over seam. Press.

**FINISHING**

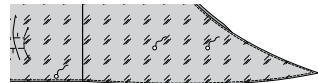
24. To secure elastic in back, stitch as basted, through all thickness and across end, stretching elastic while stitching.



25. Make buttonholes in right front at markings. Make buttonhole in lower left front at marking.

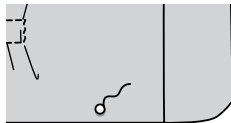


26. On inside, hand sew buttons to left front and lower left back at markings.

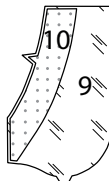


27. On outside, sew button to lower right back at marking.

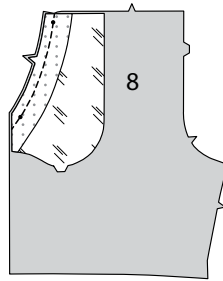
Lap left over right and fasten buttons while wearing.

**SHORTS B****FRONT**

1. Pin **POCKET INTERFACING** (10) to wrong side of **POCKET FACING** (9) matching notches and markings. Fuse in place following manufacturer's directions.

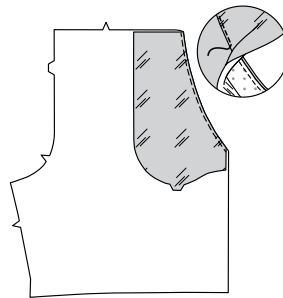


2. Stitch each pocket facing section to each upper side edge of **FRONT** (8). Trim.

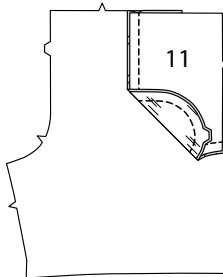


3. **UNDERSTITCH** facing.

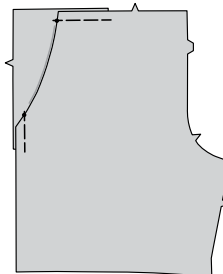
Turn pocket to inside. Press.



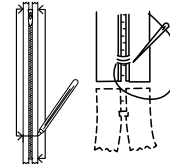
4. Stitch one **SIDE FRONT AND POCKET** (11) section to each pocket at outer edge, keeping front free.



5. Baste upper and side edges.



6. **NOTE:** It may be necessary to shorten zipper. To make new zipper stop, place zipper along opening edge with pull tab at upper small dot. Mark placement of new zipper stop at lower small dot. Whipstitch across teeth at marking. Cut zipper 3/4" (2cm) below the new stop.



7. **Construct front fly as follows:**

A-Stitch front sections together at center front between large dot and notch.

B-Turn in right front opening edge along foldline; press.

C-Place closed zipper (face up) under right front opening edge, having pressed edge close to zipper teeth and zipper stop at small dot. Using a zipper foot, baste close to pressed edge.

D-With right sides together, fold **UNDERLAP** (13) in half lengthwise. Stitch lower edge. Trim. Turn. Press. Baste raw edges.

E-On inside, pin underlap to right front opening edge (over zipper), matching notches and small dots, having raw edges even. Baste along previous basting for zipper.

F-On outside, using a zipper foot, stitch close to pressed edge of front through all layers.

G-**FINISH** outer edge of **FLY FACING** (12). Pin fly facing to left front opening edge, matching notches and large dots. Stitch, ending at large dot. Trim. **UNDERSTITCH** fly facing. Turn facing to inside.

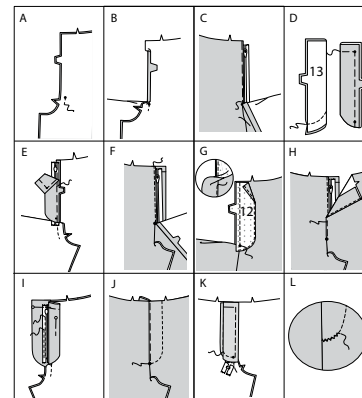
H-Lap left front over right, matching centers. Baste close to edge through all thicknesses.

I-Pin right fly out of the way. Open out fly facing. Pin remaining zipper tape to fly facing, keeping left front free. Using a zipper foot, stitch in place close to zipper teeth and along center of zipper tape.

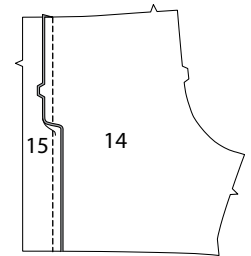
J-Turn facing down. On outside, stitch left front along stitching lines, keeping right fly free.

K-Turn right fly back in place. On inside, hand tack fly and facing together at lower edge, as shown. Trim away excess zipper tape even with lower edge of fly, if needed.

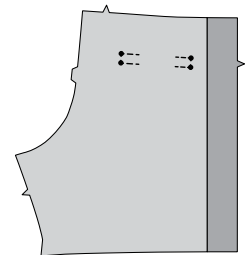
L-If desired, on outside, machine-stitch a bar tack across lower end of fly through all thicknesses.

**BACK**

8. With right sides together, pin **SIDE BACK PANEL** (15) to side edges of **BACK** (14), matching notches. Stitch. Press seam toward side.

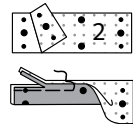


9. **REINFORCE** back along corners of stitching lines, pivoting at small dots.

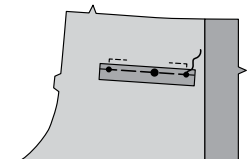


10. Apply **INTERFACING** to wrong side of **WELT** (2) sections. Fuse in place following manufactures directions.

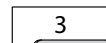
With wrong sides together, fold each welt section in half lengthwise. Baste raw edges together in a 3/8" (1cm) seam. Trim seam allowances on long edges to a scant 1/4" (6mm).



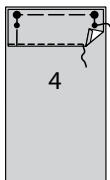
11. Pin welts to back, placing seamlines along lower stitching lines. Baste.



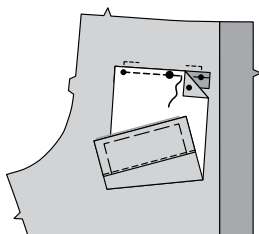
12. Turn under 1/4" (6mm) on long edge without symbols of **POCKET FACING** (3); press.



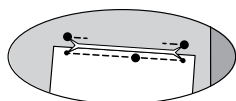
13. Pin wrong side of pocket facing to right side of POCKET (4), matching dots and having raw edges even. **EDGESTITCH** pressed edge in place. Baste raw edges together.



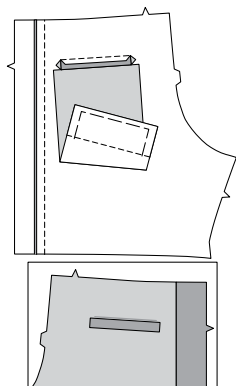
14. With right sides together, pin lower end of pocket to back along lower stitching line, matching symbols. Stitch along stitching line between small dots.



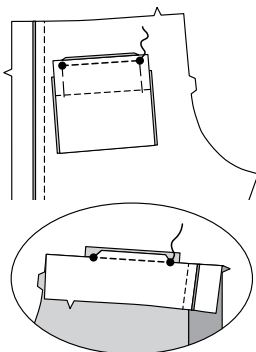
15. Slash along line between welts, clipping diagonally to small dots, being careful not to cut welts.



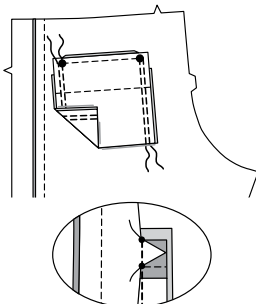
16. Turn pocket and triangular ends to inside, pulling ends of welts between triangular ends, as shown. Press.



17. With right sides together, fold pocket along foldline, having raw edges even at sides. Pin pocket to back at upper stitching line, over welt, matching symbols. Stitch along seam line between small dots, keeping front free.

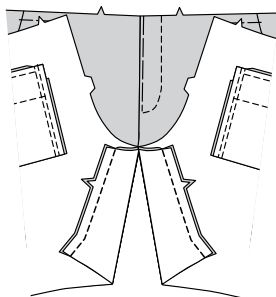


18. Stitch pocket edges together; catching welts and triangular ends, keeping front free. Stitch again 1/4" (6mm) away in seam allowance, as shown.

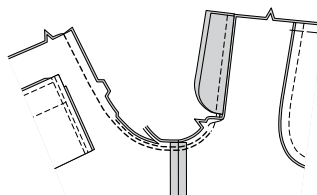


INNER LEG AND CROTCH SEAM

19. Stitch front and back together at inner leg edges.

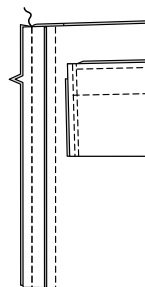


20. Stitch remainder of crotch seam to notch in front. Stitch again 1/4" (1cm) away in seam allowance along curve, as shown. Trim close to second stitching.



SIDE SEAMS

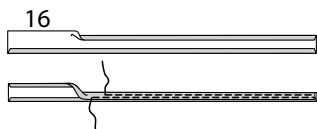
21. Stitch back and front together at sides.



WAISTBAND AND CASING

22. Turn in 1/4" (6mm) on long edges of CARRIER (16); press.

With wrong sides together, fold carriers in half lengthwise, having edges even; press. **EDGESTITCH**, as shown.

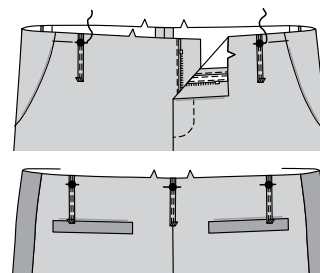


23. Cut carriers into five sections, each 3-1/2" (9cm) long.



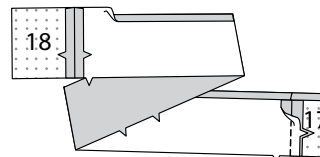
24. Press under 1/4" (6mm) on one end of carriers.

On outside, pin carriers to upper edge of shorts, centering ends over large dots, having raw edges even.

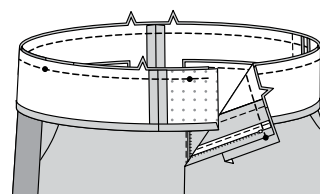


25. With right sides together, stitch RIGHT FRONT WAISTBAND (17) and LEFT FRONT WAISTBAND (18) to side edges of CASING (19). Press seams toward front.

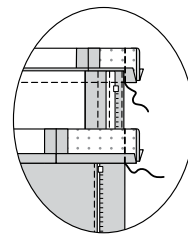
Press under 1/2" (1.3cm) on unmarked edge of waistband.



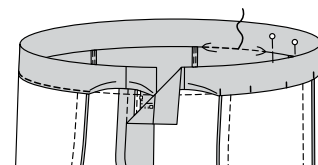
26. Pin waistband to upper edge of garment, matching small dots to side seams and small dots on waistband to right opening edge. Baste. Stitch. Trim. Press seam toward waistband.



27. With right sides together, fold waistband along foldline. Stitch ends. Trim.



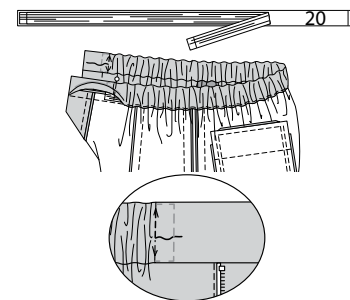
28. Turn waistband to inside, pinning pressed edge over seam, placing pins on outside. On outside, stitch in the ditch or "groove" of seam, to within 2" (5cm) of outer notches, catching in pressed edge on inside.



29. Cut a piece of elastic the length of ELASTIC GUIDE FOR WAIST (20).

insert elastic through opening in casing, matching seam allowances. Stitch across ends of elastic in the ditch or groove of seam to secure, through all thicknesses.

Pull out ends of elastic and trim close to stitching.

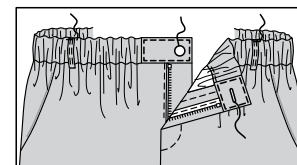


FINISHING

30. Pin remaining pressed edge of waistband over seam. Stitch in the ditch or "groove" of seam, connecting with previous stitching. **EDGESTITCH** front waistband.

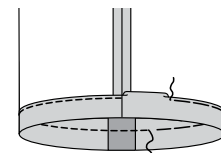
Press up carriers having ends centered over large dots. **EDGESTITCH** carriers in place.

Make buttonhole in left front waistband at marking. Sew button to right waistband at small dot.



31. Turn up hem on lower edge of garment. Baste close to fold. Turn in 1/4" (6mm) on raw edge, easing in fullness if necessary. Baste hem in place close to upper edge. Press.

TOPSTITCH hem along upper basting, as shown.





Congrats!

You've completed your sewing adventure

SHARE YOUR LOOK



Post your pattern and tag us
@simplicity_creative_group and **#knowMepatterns**
for a chance to be featured on our social media.

Look for more PDF patterns at **simplicity.com**

Have a question or need help with your sewing project call us at
1-800-782-0323



KnowMe ©2023 a division of IG Design Group Americas Inc. • Atlanta, GA 30342 USA www.thedesigngroup.com • All Rights Reserved. www.mccall.com • Made in the U.S.A. Fabriqué aux États-Unis.
To be used for individual private home use only and not for commercial or manufacturing purposes. • A usage privé seulement et non à des fins commerciales ou de production en série. • Para uso privado solamente, no se puede utilizar con propósitos de comercialización o de producción en serie.