

BEAUTE' J'ADORE

knowME
BY MIMI G

ME2070



Scan QR code for a Sew-Along video tutorial.



@beautejadore

 Designed and printed in USA

Average											
GIRLS' AND MISSES' TRENCH COAT											
Suggested Fabrics: Cotton Blends, Lightweight Wool Blends, Linen Blends, Nylon, Twill. Lining: Cotton Blends, Polyester Blends. Interfacing: Lightweight Fusible.											
Notions: For Girls: Thirteen ¾" (2cm) buttons, one belt buckle (without prong) with a 1½" (4cm) opening. For Misses: Thirteen 1" (2.5cm) buttons, one belt buckle (without prong) with a 2" (5cm) opening.											
Sizes	GIRLS'					MISSES'					
European	7	8	10	12	14	10	12	14	16	18	
						36	38	40	42	44	
BODY MEASUREMENTS: Select pattern size based on body measurements											
Chest/Bust	26	27	28½	30	32	32½	34	36	38	40	Ins.
Waist	23	23½	24½	25½	26½	25	26½	28	30	32	"
Hip	27	28	30	32	34	34½	36	38	40	42	"
Back-neck to waist	11½	12	12¾	13½	14¾	16	16¼	16½	16¾	17	"
Height	50	52	56	58½	61	—	—	—	—	—	"
Trench Coat											
45"*	4¾	4¾	4¾	4¾	5¾	5¾	5¾	6	6¾	6¾	Yds.
60"*	3	3¾	3¾	3¾	3¾	4¾	4¾	4¾	4¾	4¾	"
Lining											
45"*	2¼	2¼	2¼	2¼	2¼	3¾	3¾	3¾	3¾	3¾	Yds.
Interfacing											
20"	2¾	2¾	3	3	3¾	3¾	3¾	3¾	3¾	3¾	Yds.
FINISHED GARMENT MEASUREMENTS (Includes Design and Wearing Ease)											
Chest/Bust	34½	35½	37	38½	40½	43	44½	46½	48½	50½	Ins.
Waist	33¾	34½	36	37½	39½	40	41½	43½	45½	47½	"
Hip	35½	36½	38	39½	41½	42	43½	45½	47½	49½	"
Width, lower edge											
Trench Coat	38	39	40½	42	44	45	46½	48½	50½	52½	Ins.
Finished back length from base of neck											
Trench Coat	39	40	42	44	46	52	52½	52½	52½	53	Ins.

*with nap **without nap

Moins Facile

TRENCH-COAT POUR FILLETES ET JEUNES FEMMES

Tissus Conseillés: Cotonnades, Lainages légers, Toile de lin mélangés, Nylon, Twill. Doublure: Cotonnades, Mélanges de polyester. Entoilage: Thermocollant léger.

Mercrie: Pour Fillettes: 13 boutons de 2cm, 1 boucle de ceinture (sans ardillon) avec ouverture de 4cm. Pour Jeunes Femmes: 13 boutons de 2.5cm, 1 boucle de ceinture (sans ardillon) avec ouverture de 5cm.

	FILLETES					JEUNES FEMMES					
Tailles	7	8	10	12	14	10	12	14	16	18	
Françaises						38	40	42	44	46	
Européen						36	38	40	42	44	

MESURES DU CORPS: Choisissez la taille du patron basée sur les mesures du corps

Poitrine	66	68.5	72.5	76	81.5	83	87	92	97	102	cm
Taille	58.5	59.5	62	65	67.5	64	67	71	76	81	"
Hanches	68.5	71	76	81.5	86.5	88	92	97	102	107	"
Dos du cou à la taille	29	30.5	32.5	34.5	36	40.5	41.5	42	42.5	43	"
Hauteur	127	132	143	149	155	—	—	—	—	—	"

Trench-coat

115cm*	4.0	4.1	4.3	4.5	4.7	5.4	5.4	5.4	5.6	5.7	m
150cm*	2.7	2.7	2.9	3.0	3.1	3.9	3.9	4.0	4.1	4.1	"

Doublure

115cm**	1.9	1.9	1.9	2.1	2.1	2.9	2.9	2.9	2.9	2.9	m
---------	-----	-----	-----	-----	-----	-----	-----	-----	-----	-----	---

Entoilage

51cm	2.5	2.6	2.6	2.7	2.9	3.4	3.4	3.4	3.4	3.5	m
------	-----	-----	-----	-----	-----	-----	-----	-----	-----	-----	---

MESURES DES VÊTEMENTS FINI (Motif et aisance de port compris)

Poitrine	88	90	94	98	103	109	113	118	123	128	cm
Taille	85	88	91	95	100	102	105	110	116	121	"
Hanches	90	93	97	100	105	107	110	116	121	126	"

Largeur à l'ourlet

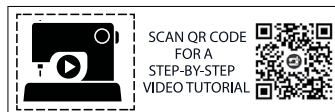
Trench-coat	97	99	103	107	112	114	118	123	128	133	cm
-------------	----	----	-----	-----	-----	-----	-----	-----	-----	-----	----

Longueur finie – dos, votre nuque à l'ourlet

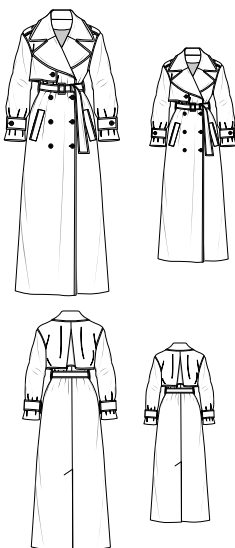
Trench-coat	99	102	107	112	117	132	133	133	134	135	cm
-------------	----	-----	-----	-----	-----	-----	-----	-----	-----	-----	----

*avec sens **sans sens

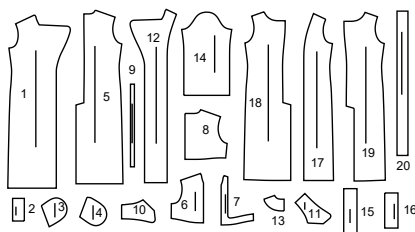




@beautejadore

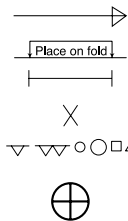


20 PATTERN PIECES



- 1 Front
- 2 Welt
- 3 Pocket Facing
- 4 Pocket
- 5 Back
- 6 Front Overlay
- 7 Front Overlay Facing
- 8 Back Overlay
- 9 Carrier
- 10 Upper Collar
- 11 Under Collar
- 12 Front Facing
- 13 Back Facing
- 14 Sleeve
- 15 Sleeve Tab
- 16 Epaulet
- 17 Front Lining
- 18 Right Back Lining
- 19 Left Back Lining
- 20 Belt

PATTERN MARKINGS



GRAINLINE: Place on straight grain of fabric, parallel to selvage or fold.

FOLDLINE: Place line on fold of fabric.

BUTTONHOLE MARKING: Indicates exact length and placement of buttonholes.

BUTTON MARKING: Indicates button placement.

NOTCHES AND SYMBOLS: For matching seams and construction details.

Indicates the Bustline, Waistline, Hip and/or Biceps. Measurements refer to circumference of Finished Garment (Body Measurement + Wearing Ease + Design Ease). Adjust pattern if necessary. The measurement excludes pleats, tucks, darts and seam allowances.

SEAM ALLOWANCE: 5/8" (1.5cm) included unless otherwise indicated, but not printed on tissue.

ADJUST IF NECESSARY

Lengthen or Shorten at adjustment lines (==) or where indicated on pattern. If substantial length is added, you may need to purchase additional fabric.

TO SHORTEN: Crease along adjustment line. Make a fold half the amount needed. Tape in place.

TO LENGTHEN: Slash between adjustment lines. Spread amount as needed, keeping edges parallel. Tape over paper.

When Alteration lines are not on tissue, lengthen or shorten at lower edge.

CUTTING AND MARKING

SHRINK FABRIC if not labeled pre-shrunk. Press.

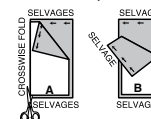
CIRCLE LAYOUT for View, Size, Fabric Width.

Use **WITH NAP** layout for fabrics with one-way designs, nap, pile or surface shading. Because most knits have surface shading, a with nap layout is used.

For **DOUBLE THICKNESS (WITH FOLD)** - fold fabric with right sides together.

*** DOUBLE THICKNESS (WITHOUT FOLD)** - For fabrics with nap, fold fabric crosswise, right sides together. Mark as shown. Cut along crosswise fold of fabric (A). Turn upper layer 180° so arrows go in same direction and place over lower layer, right sides together (B).

For **SINGLE THICKNESS** - place fabric right side up. (For Fur Flee fabrics, place pile side down.)



★ Cut other pieces first, allowing enough fabric to cut this piece. Open fabric. For "Cut 1" pieces, cut piece once on single layer of fabric with piece face up on right side of fabric.

Pattern may have cutting lines for several sizes. Select the proper cutting line or pattern pieces for your size.

Before **CUTTING** place all pieces on fabric according to layout. Pin. (Layouts show approximate position of pattern pieces; position may vary according to your pattern size.) Cut **ACCURATELY**, cutting notches outward.

Before removing pattern, **TRANSFER MARKINGS** and lines of construction to Wrong Side of fabric, using the Pin and Chalk Pencil method or Tracing Paper and Dressmaker Wheel. Markings needed on right side of fabric should be thread traced.

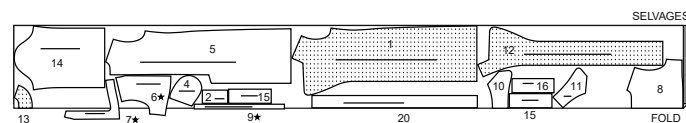
NOTE: Broken-line boxes (at bl cl) in layouts represent pieces cut by measurements provided.

CUTTING LAYOUTS

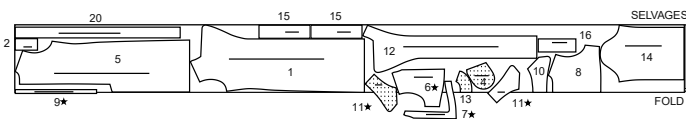
COAT

use pieces: 1 2 4 5 6 7 8 9 10 11 12 13 14 15 16 20

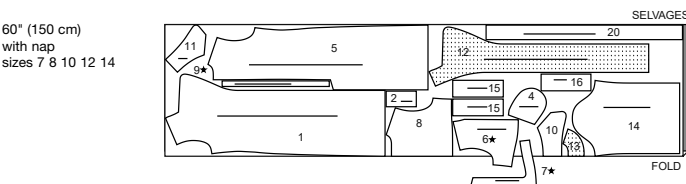
45" (115 cm)
with nap
sizes 7 8 10 12 14



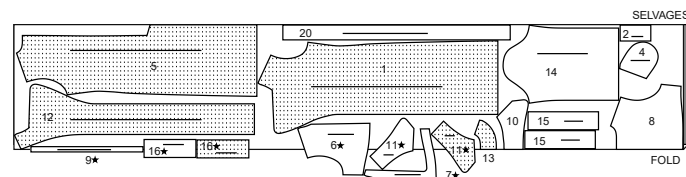
45" (115 cm)
with nap
sizes 16 18



60" (150 cm)
with nap
sizes 7 8 10 12 14



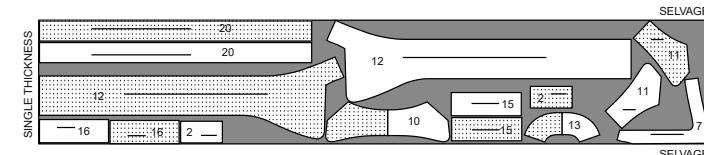
60" (150 cm)
with nap
sizes 16 18



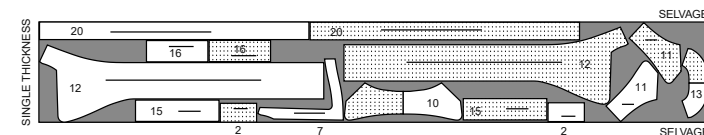
INTERFACING

use pieces: 2 7 10 11 12 13 15 16 20

20" (51 cm)
without nap
sizes 7 8 10 12 14



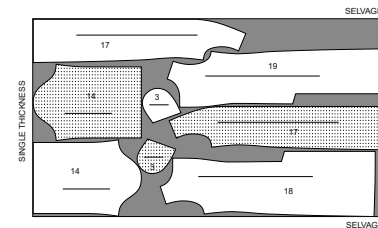
20" (51 cm)
without nap
sizes 16 18



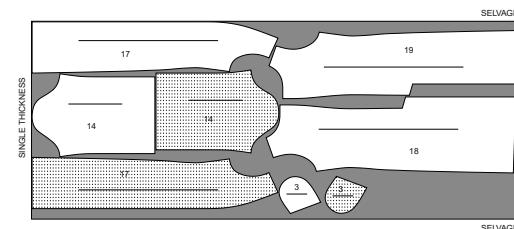
LINING

use pieces: 3 14 17 18 19

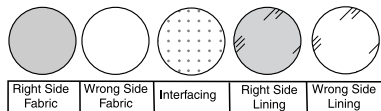
45" (115 cm)
without nap
sizes 7 8 10 12 14



45" (115 cm)
without nap
sizes 16 18

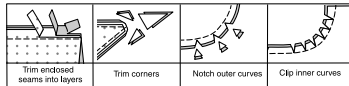


SEWING INFORMATION FABRIC KEY



SEAM ALLOWANCES

Use 5/8" (1.5cm) seam allowances unless otherwise indicated.



PIN AND FIT

Pin or baste seams, **RIGHT SIDE TOGETHER**, matching notches. Fit garment before stitching major seams.

PRESS

Press seam allowances flat; then open unless otherwise stated. Clip where necessary so they lie flat.

GLOSSARY

Sewing terms appearing in **BOLD TYPE** in Sewing Instructions are explained below.

EASE – Loosen needle tension slightly. With **RIGHT** side up, stitch 5/8" (1.5cm) from cut edge using a long stitch. Stitch again 1/4" (6mm) from the first stitching within the seam allowance.

EDGE STITCH – Stitch close to finished edge or seam.

FINISH – Stitch 1/4" (6mm) from raw edge and finish with one of the following: (1) Pink OR (2) Overcast OR (3) Turn in along stitching and stitch close to fold OR (4) Overlock.

INTERFACING – Pin interfacing to **WRONG** side of fabric. Fuse interfacing in place following manufacturer's directions.

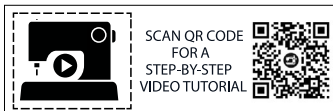
REINFORCE – Stitch along seamline where indicated in sewing instructions, using small machine stitches.

SLIP-STITCH – Slide needle through a folded edge, then pick up a thread of underneath fabric.

STAY-STITCH – Stitch 1/2" (1.3cm) from cut edge in direction of arrows. This stitching stays in permanently to prevent stretching on curved edges. (Shown only in the first illustration.)

TOPSTITCH – On outside, stitch 1/4" (6mm) from edge, seam or previous stitching, using presser foot as guide, or stitch where indicated in instructions.

UNDERSTITCH – Press facing and seam away from garment, stitching through facing and seam allowances close to seam.



SCAN QR CODE
FOR A
STEP-BY-STEP
VIDEO TUTORIAL

@beautejadore

SEWING DIRECTIONS

TRENCH COAT

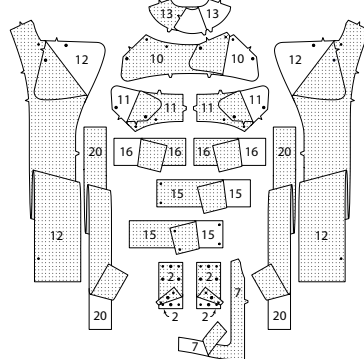
NOTE: Before sewing coat, make sure to mark all stitching lines using a pen with disappearing ink or hand-basting.

NOTE: Before sewing coat, trim 1" (2.5cm) from lower edge of **SLEEVE** (14) lining sections.

NOTE: After each seam is stitched, **FINISH** all visible raw edges of seam allowances.

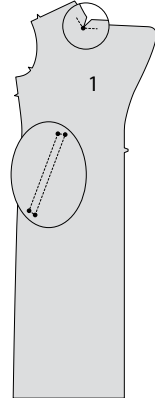
INTERFACING

1. Pin corresponding **INTERFACING** sections to wrong side of **WELT** (2), **FRONT OVERLAY FACING** (7), **UPPER COLLAR** (10), **UNDER COLLAR** (11), **FRONT FACING** (12), **BACK FACING** (13), **SLEEVE TAB** (15), **EPAULET** (16), and **BELT** (20) sections. Fuse interfacing in place following manufacturer's directions.

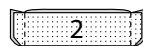


FRONT

2. **REINFORCE** inner corner of **FRONT** (1) neckline at small dot. Clip neck edge at inner corner. To reinforce front (for pocket and welt), stitching along stitching lines, pivoting with needle in fabric at small dots, as shown.



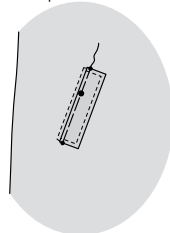
3. With right sides together, fold **WELT** (2) along foldline. Stitch ends. Trim seam and corners.



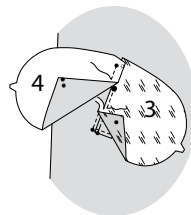
4. Turn welt; press. **TOPSTITCH** finished edges. Baste raw edges together. Trim to 1/4" (6mm).



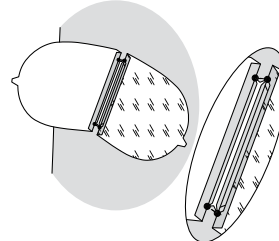
5. Pin welt to front with finished edge of welt toward front edge, matching small and large dots, placing basting along stitching line. Baste in place between the small dots.



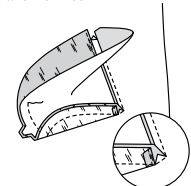
6. With right sides together, pin **POCKET FACING** (3) to front (over welt), matching small and large dots. Stitch between the small dots. Trim seam to 1/4" (6mm). Pin **POCKET** (4) to front along remaining stitching line, matching small dots. Stitch between the small dots. Trim seam to 1/4" (6mm).



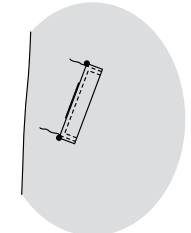
7. Press seam allowances toward pockets, as shown. Slash front between stitching, clipping diagonally to small dots.



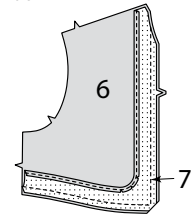
8. Pull pockets through opening, bringing each to the inside. **UNDERSTITCH** the pocket facing. Stitch pocket edges together, catching triangular ends in stitching, keeping front and welt free.



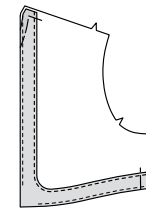
9. On outside, press up welt, matching large dots. **EDGE STITCH** side edges of welt to front through all thicknesses.



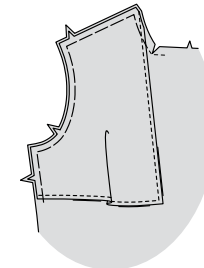
10. **FINISH** unnotched edge of **FRONT OVERLAY FACING** (7). With right sides together and raw edges even, pin facing to **FRONT OVERLAY** (6), matching notches. Stitch lower and notched edge, leaving neck edge open. Trim seam and corners.



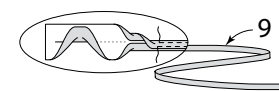
11. **UNDERSTITCH** the facing. Turn facing to inside press. **TOPSTITCH** front and lower edges. Baste raw edges together.



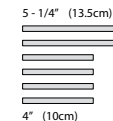
12. Pin wrong side of overlay to right side of **RIGHT** front with neck, shoulder, and side edges even. Baste.



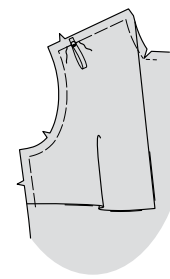
13. Fold **CARRIER** (9) in half, lengthwise with wrong sides together. Press, setting in a crease. Open out long edges of carrier and turn them to wrong side so that they meet at the crease. Press. Fold carrier in half lengthwise, bringing pressed edges together. Stitch close to both long edges.



14. Cut carrier into two sections 5-1/4" (13.5cm) long and four sections 4" (10cm) long. (The long pieces will be used for epaulets and short pieces for sleeve tabs and belt carriers.)

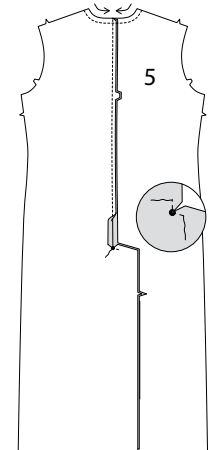


15. Using the long pieces, fold carrier in half, bringing ends together. On outside, pin carrier to shoulder edge of front (over front overlay) placing ends over large dot with raw edges even. Baste.

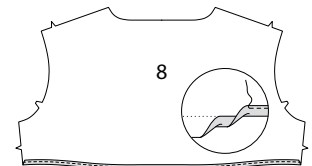


BACK

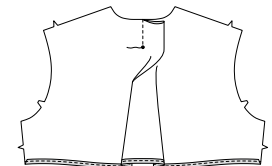
16. **STAYSTITCH** neck edge of **BACK** (5) in the direction of the arrows. To **REINFORCE** inner corner of back vent extensions, stitch along stitching lines, pivoting with needle in fabric at large dot. Clip to stitching at dot. Stitch center back seam from upper edge to large dot, back-stitching at dot to reinforce the seam.



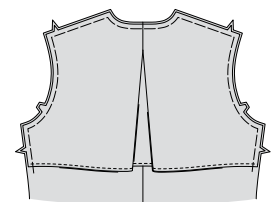
17. Press under 5/8" (1.5cm) hem allowance on lower edge of **BACK OVERLAY** (8). To form a narrow hem, tuck under raw edge to meet crease. Press. Stitch hem in place.



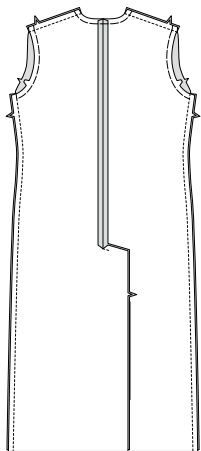
18. To make pleat on back overlay, on inside, bring broken lines together. Stitch along broken lines from neck edge to small dot. Backstitching at dot to reinforce the seam. Press pleat flat bringing stitching to center. Baste across raw edge.



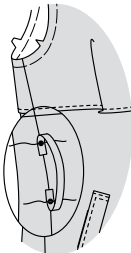
19. Pin wrong side of overlay to right side of back with neck, shoulder, and side edges even. Baste.



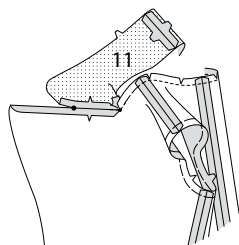
20. Stitch front to back at shoulder and side edges.



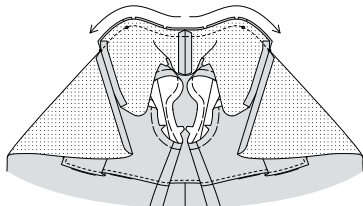
21. On outside, lap ends of a short carrier 1/2" (1.3cm) over each set of large dots at side seams. Stitch, securely over large dots.



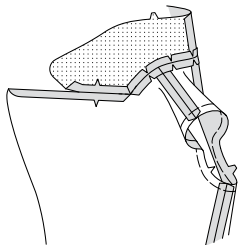
22. Stitch center back seam of UNDER COLLAR (11). With right sides together, pin front edge of under collar to coat, matching small dots, large dots, and notches. Stitch notched edge between small and large dots. Press seam open. Clip back neck edge of coat to stay-stitching along curves.



23. Stitch remaining neck edge, with right sides together, matching centers back and small dots, placing inner small dot at shoulder seam. Stitch each side from center back to outer small dot in direction of arrows.

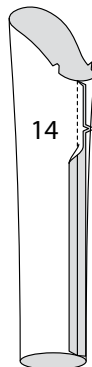


24. Trim neck seam between outer small dots; clip curves. Press seam open.

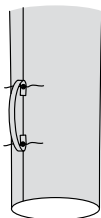


SLEEVE

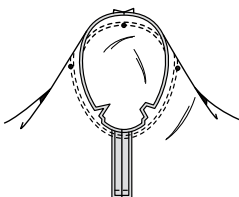
25. Pin underarm edges of SLEEVE (14), matching notches. Stitch.



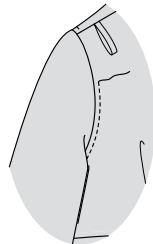
26. On outside, lap ends of remaining carriers 1/2" (1.3cm) over large dots at underarm seams. Stitch, securely over large dots.



27. With the sleeve right side out. Hold coat wrong side out with armhole toward you. With right sides together, pin sleeve to armhole edge with center small dot at shoulder seam, matching underarm seams, notches and remaining small dots. Baste. Stitch. Stitch again 1/8" (3mm) from first stitching. Trim seam below notches close to stitching. Press seam toward coat.

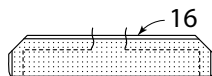


28. On outside, **TOPSTITCH** coat along armhole seam.



EPAULET AND SLEEVE TAB

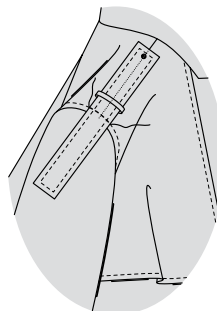
29. Fold EPAULET (16) along foldline with right sides together. Stitch, leaving an opening in long edge for turning. Trim seam and corners.



30. Turn epaulet; press. **SLIP-STITCH** opening closed. **TOPSTITCH** finished edges.



31. On outside, thread epaulet through carrier, centering epaulet, lengthwise, over shoulder seam, matching small dots. Stitch along stitching line.



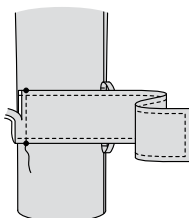
32. With right sides together and raw edges even, pin SLEEVE TAB (15) to sleeve tab facing. Stitch, leaving end with small dots open. Trim seam and corners.



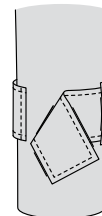
33. Turn sleeve tab; press. **TOPSTITCH** finished edges.



34. On outside, pin sleeve tab to sleeve, having finished end toward front of sleeve, matching small dots. Stitch along stitching line, securely. Trim seam allowance to a scant 1/4" (6mm).



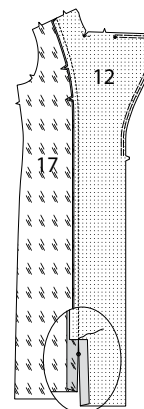
35. Press tab toward back of sleeve, over seam allowance. Stitch 1/4" (6mm) from seam. Thread tab through carrier; press.



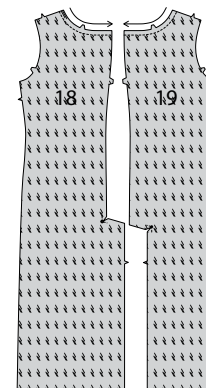
COAT FACING AND LINING

36. **REINFORCE** small dot at inner corner of FRONT FACING (12), and clip to small dot same as for front. EASE stitch upper and front edge from large dot to double notch.

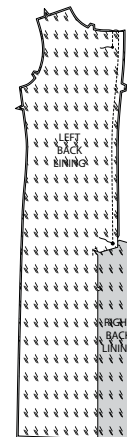
With right sides together, pin front facing to FRONT LINING (17), matching small dots and notches. Stitch from shoulder edge to 1" (2.5cm) above small dot; backstitch to reinforce seam. Clip only the facing seam allowance at end of stitching, as shown. Press seam toward lining, pressing under 5/8" (1.5cm) on inner edge of facing below clip, as shown.



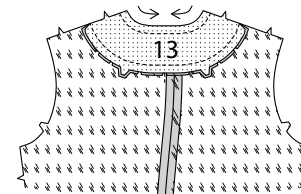
37. **STAYSTITCH** RIGHT BACK LINING (18) and LEFT BACK LINING (19) neck edges. To reinforce inner corner of back vent extensions, stitch along seam line 1" (2.5cm) each side of large dot on right back lining and small dot on left back lining, stitching through dots. Clip to stitching at dots, being careful not to clip through stitching.



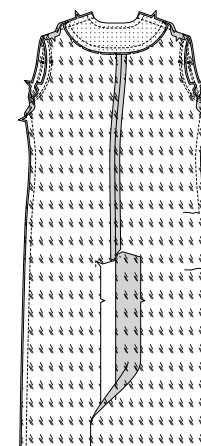
38. With right sides together, pin back lining sections together, matching large dots. Stitch from upper edge to large dot, backstitching at large dot to reinforce seam. To make pleat, stitch from upper edge to small dot, backstitching at small dot to reinforce seam. Press seam open and pleat toward right back.



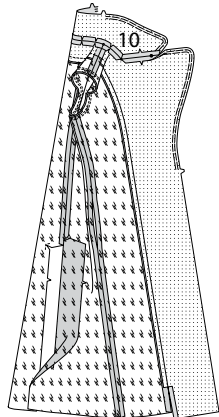
39. Clip neck edge of back lining to staystitching. **STAYSTITCH** neck edge of BACK FACING (13). With right sides together and raw edges even, pin lower edge of back facing to upper edge of back lining. Stitch. Press seam toward lining.



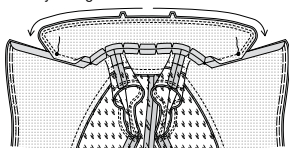
40. Stitch front facing and lining to back at shoulder edges and side edges, leaving an opening in one side edge for turning. Trim 1" (2.5cm) from lower edge of sleeve lining. Stitch sleeve lining underarm edges together and stitch into armhole edge in the same manner as for coat.



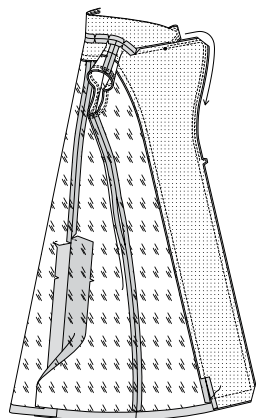
41. EASE stitch UPPER COLLAR (10) between double notches and large dot. Clip neck edge of back facing to staystitching along curves. With right sides together, pin upper collar to neck edge of front and back facing, matching centers back, small and large dots, placing inner small dots at shoulder seams. Stitch between large dots, pivoting with needle in fabric at inner corners. Trim back neck seam between outer small dots; clip curves. Press seams open.



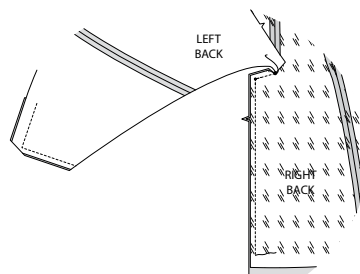
42. With right sides together, pin upper collar to under collar, matching centers back and large dots. Turn neck seam allowances down. Hand-baste outer edges of upper and under collar together between large dots, working basting stitches from center back to large dot, easing upper collar to fit. Stitch as basted from center back to large dot, overlapping a few stitches at center back. Anchor thread ends securely at large dots.



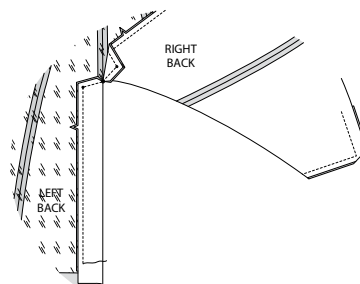
43. UNDERSTITCH upper edge of under collar, as far as possible. Pin front facing to coat, matching small and large dots. Hand-baste from large dot at neck edge to double notch, easing front facing to fit. Turn neck seam allowance toward collar, stitch from large dot to inner edge of facing. Trim each seam of collar and facing to within 1/4" (6mm) of stitching. Trim across collar and lapel edges, clipping curves. Press all seams before turning.



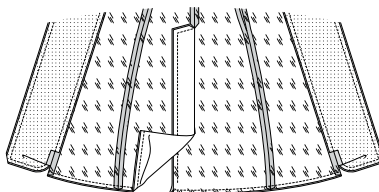
44. With right sides together, pin the back vent edges of right back lining and right coat back, matching small dots, large dots, and notches. Starting at large dot, stitch right back vent edges together to within 2" (5cm) of lower edge, being careful not catch in left half of coat and lining.



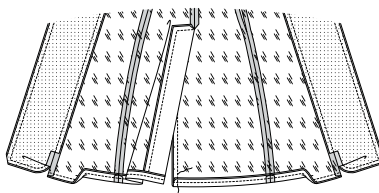
45. With right sides together, pin the back vent edges of left back lining and left coat back, matching small dots, large dots, and notches. Starting at large dot, stitch left back vent edges together to within 2" (5cm) of lower edge, being careful not to catch in right half of coat and lining.



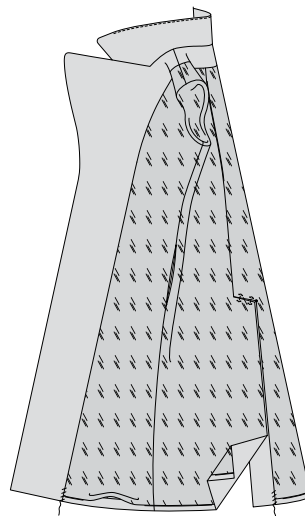
46. With right sides together, pin lower edges of coat and lining together, matching centers back and seams. Stitch lower edges together between side front seams in 5/8" (1.5cm) seam.



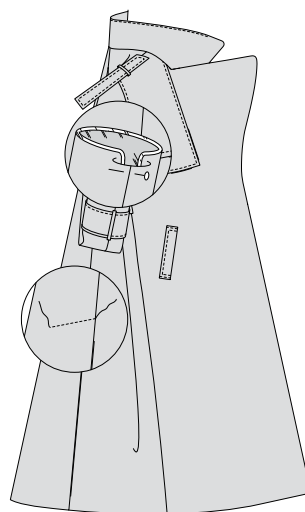
47. At back vent edges, turn up coat hem over lining (lining hem will turn up with the coat), as shown. Stitch remaining right back vent edges together, connecting to previous stitching. Trim seams and corners.



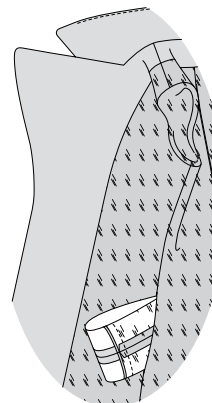
48. Turn coat and lining right side out through opening in lining, turning left back vent along solid line. Press collar, making sure outer seam is rolling slightly to the underside. Press remaining lapel and front edges, pressing hem in place. Slip hand through opening in lining and loosely hand-sew neck seams of coat and lining together. Tack hem to coat seams. Allow lining to drop. On inside, pin right vent over left, matching small dots, placing pins on outside.



49. On outside, stitch left back along stitching line, catching in right vent on the inside. Slip sleeves in place. In order to match seams correctly, turn seam allowance on sleeve edges of coat and lining toward each other at seams, as shown. Anchor the turned edges with a pin. (This will enable you to pin the lower edges together more easily when you are ready to stitch the sleeve edges together.)



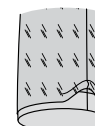
50. Pull sleeve through opening in lining, having wrong sides out, separating the coat sleeve from the lining sleeve. With right sides together, pin sleeve edges together, matching seams. Remove anchoring pin. Stitch sleeve edge. Trim seam.



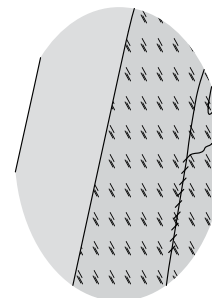
51. Turn up sleeve hem allowance. Tack hem to seam, as shown.



52. Turn sleeve right side out; press, pressing up sleeve hem. Allow sleeve lining to drop.

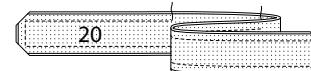


53. SLIP-STITCH opening edges of lining together.

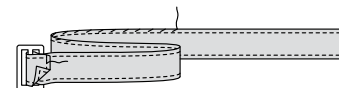


FINISHING AND BELT

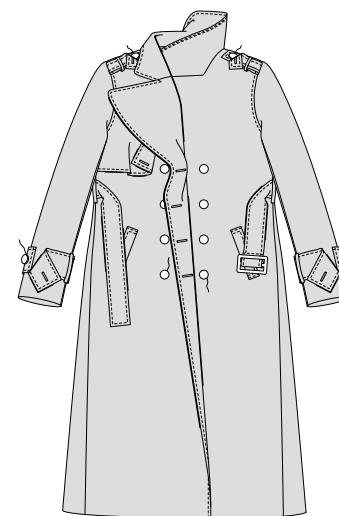
54. With right sides together and raw edges even, pin BELT (20) to belt facing. Stitch, leaving an opening in one long edge for turning. Trim seams and corners.



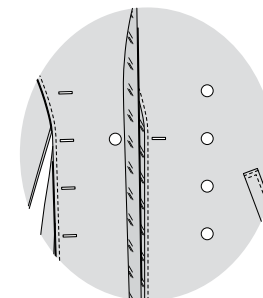
55. Turn belt; press. **SLIP-STITCH** opening closed. **TOPSTITCH** finished edges. Slip marked end of belt through bar of buckle, turning end over along fold line. Stitch turned end in place, securely. Thread belt through carriers on coat and fasten as shown on envelope.



56. On outside, **TOPSTITCH** front edges of coat and collar, squaring stitching 1/4" (6mm) above point where collar meets lapel. Make buttonholes on right front and overlay. Sew buttons to four inner dots. Lap right front over left, matching centers. On left front, sew buttons under buttonholes. Make buttonholes on sleeve tabs. Sew buttons to sleeve tabs at small dots. Make buttonholes on epaulets. Sew buttons to epaulets at small dots. Thread epaulet through carrier to button.



57. On left front, make buttonhole at second from top marking. On inside of right front, sew button over left front buttonhole.





Congrats!

You've completed your sewing adventure

SHARE YOUR LOOK



Post your pattern and tag us
@simplicity_creative_group and **#knowMepatterns**
for a chance to be featured on our social media.

Look for more PDF patterns at **simplicity.com**

Have a question or need help with your sewing project call us at
1-800-782-0323



KnowMe ©2023 a division of IG Design Group Americas Inc. • Atlanta, GA 30342 USA www.thedesigngroup.com • All Rights Reserved. www.mccall.com • Made in the U.S.A. Fabriqué aux États-Unis.
To be used for individual private home use only and not for commercial or manufacturing purposes. • A usage privé seulement et non à des fins commerciales ou de production en série. • Para uso privado solamente, no se puede utilizar con propósitos de comercialización o de producción en serie.