



LYNN BRANNELLY
knowME
BY MIMI G

ME2069



Scan QR code for a Sew-Along video tutorial.



@LWS_lynnwardrobesews



Designed and printed in USA

Average

MISSES' TOP AND PANTS

Suggested Fabrics: A, B: Chambray, Chino, Cotton Blends, Denim, Linen Blends, Stretch Wovens, Twill. **Lining B:** Cotton Blends, Polyester Blends. **Interfacing:** Lightweight Fusible.

Notions: A: Ten 5/8" (1.5cm) buttons or jean tack buttons. B: One 7" (18cm) zipper (cut to fit), one 5/8" (1.5cm) button or jean tack button.

Sizes	8	10	12	14	16	18	20	22	24	26
European	34	36	38	40	42	44	46	48	50	52

BODY MEASUREMENTS: Select pattern size based on body measurements

Bust	31½	32½	34	36	38	40	42	44	46	48	Ins.
Waist	24	25	26½	28	30	32	34	37	39	41	"
Hip-9" below waist	33½	34½	36	38	40	42	44	46	48	50	"
Back-neck to waist	15¾	16	16¼	16½	16¾	17	17¼	17½	17¾	18	"

Top A	45**	2%	2%	3	3	3%	3½	3%	3%	3¾	3¾	Yds.
	60**	2%	2%	2½	2½	2¼	2¼	2½	2½	2½	2%	"

Interfacing 20" - 2¾ yds.

Pants B	45**	2½	2½	2½	2½	2½	2½	3	3	3	Yds.
	60**	1¾	1¾	1¾	2¼	2¼	2½	2½	2½	2½	"

Lining 45*** - ¾ yd.

Interfacing 20" - ¾ yd.

FINISHED GARMENT MEASUREMENTS (Includes Design and Wearing Ease)

A Bust	35	36	37½	39½	41½	43½	45½	47½	49½	51½	Ins.
A Waist	26½	27½	29	31	33	35	37	39	41	43	"
B Waist	26	27	28½	30½	32½	34½	36½	38½	40½	42½	"
B Hip	37½	38½	40	42	44	46	48	50	52	54	"

Width, each leg

Pants B	25½	26	26¾	27¾	28¾	29¾	30¾	31¾	32¾	34¾	Ins.
----------------	-----	----	-----	-----	-----	-----	-----	-----	-----	-----	------

Finished back length from base of neck

Top A	27¾	28	28¾	28¾	29	29¾	29¾	29¾	30	Ins.
--------------	-----	----	-----	-----	----	-----	-----	-----	----	------

Finished side length from waist

Pants B	41¾	42	42¼	42½	42¾	43	43¼	43½	43¾	44	Ins.
----------------	-----	----	-----	-----	-----	----	-----	-----	-----	----	------

*with nap **without nap

Moins Facile

HAUT ET PANTALON POUR JEUNES FEMMES

Tissus Conseillés: A, B: Chambray, Chino, Cotonnades, Denim, Lin mélangés, Tissus tissés extensibles, Twill. **Double B:** Cotonnades, mélanges de polyester. **Entoilage:** Thermocollant léger.

Merceries: A: 10 boutons ou boutons rivets pour les jeans de 1.5cm. B: 1 fermeture à glissière de 18cm (coupée pour ajuster), 1 bouton ou bouton rivet pour les jeans de 1.5cm.

Tailles	8	10	12	14	16	18	20	22	24	26
Françaises	36	38	40	42	44	46	48	50	52	54
Européen	34	36	38	40	42	44	46	48	50	52

MESURES DU CORPS: Choisissez la taille du patron basée sur les mesures du corps

Poitrine	80	83	87	92	97	102	107	112	117	122	cm
Taille	61	64	67	71	76	81	87	94	99	104	"
Hanches (23cm au-dessous de la taille)	85	88	92	97	102	107	112	117	122	127	cm
Dos du cou à la taille	40	40.5	41.5	42	42.5	43	44	44.5	45	46	"

Haut A	115cm*	2.6	2.6	2.7	2.7	2.9	3.2	3.2	3.3	3.4	3.4	m
	150cm*	1.9	1.9	1.9	2.1	2.1	2.3	2.3	2.3	2.4	2.4	"

Entoilage 51cm - 2.4m

Pantalon B	115cm*	2.3	2.3	2.3	2.3	2.3	2.6	2.6	2.7	2.7	2.7	m
	150cm*	1.6	1.6	1.6	2.1	2.1	2.2	2.3	2.4	2.4	2.4	"

Double 115cm** - 0.3m

Entoilage 51cm - 0.7m

MESURES DES VÊTEMENTS FINI (Motif et aisance de port compris)

A Poitrine	89	91	95	100	105	110	116	121	126	131	cm
A Taille	67	70	74	79	84	89	94	99	104	109	"
B Taille	66	69	72	77	83	88	93	98	103	108	"
B Hanches	95	98	102	107	112	117	122	127	132	137	"

Largeur, chaque jambe

Pantalon B	65	66	68	70	73	76	78	81	83	88	cm
-------------------	----	----	----	----	----	----	----	----	----	----	----

Longueur finie - dos, votre nuque à l'ourlet

Haut A	70	71	72	72	73	74	74	75	76	76	cm
---------------	----	----	----	----	----	----	----	----	----	----	----

Longueur finie - côté, taille à l'ourlet

Pantalon B	106	107	107	108	109	109	110	110	111	112	cm
-------------------	-----	-----	-----	-----	-----	-----	-----	-----	-----	-----	----

*avec sens **sans sens



A

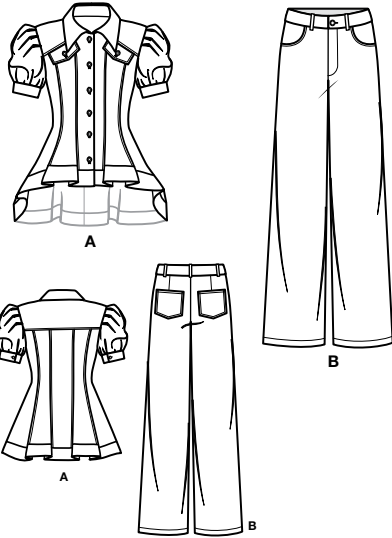


B

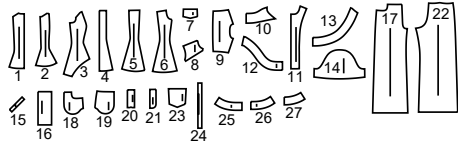


SCAN QR CODE FOR A STEP-BY-STEP VIDEO TUTORIAL

@LWS_lynnwardrobesews

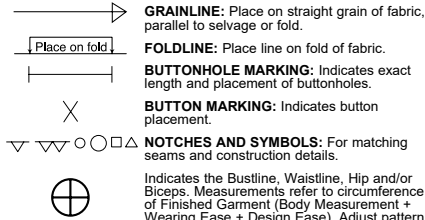


27 PATTERN PIECES



- 1 Front-A
- 2 Middle Front-A
- 3 Side Front-A
- 4 Back-A
- 5 Middle Back-A
- 6 Side Back-A
- 7 Flap-A
- 8 Yoke Front-A
- 9 Yoke Back-A
- 10 Collar-A
- 11 Front Facing-A
- 12 Front Hem Band-A
- 13 Back Hem Band-A
- 14 Sleeve-A
- 15 Continuous Lap-A
- 16 Cuff-A
- 17 Front-B
- 18 Pocket Facing-B
- 19 Side Front and Pocket-B
- 20 Right Fly-B
- 21 Left Fly Facing-B
- 22 Back-B
- 23 Back Pocket-B
- 24 Carriers-B
- 25 Right Waistband-B
- 26 Left Front Waistband-B
- 27 Back Waistband-B

PATTERN MARKINGS



GRAINLINE: Place on straight grain of fabric, parallel to selvage or fold.

FOLDLINE: Place line on fold of fabric.

BUTTONHOLE MARKING: Indicates exact length and placement of buttonholes.

BUTTON MARKING: Indicates button placement.

NOTCHES AND SYMBOLS: For matching seams and construction details.

Indicates the Bustline, Waistline, Hip and/or Biceps. Measurements refer to circumference of Finished Garment (Body Measurement + Wearing Ease + Design Ease). Adjust pattern if necessary. The measurement excludes pleats, tucks, darts and seam allowances.

SEAM ALLOWANCE: 5/8" (1.5cm) included unless otherwise indicated, but not printed on tissue.

ADJUST IF NECESSARY

Lengthen or Shorten at adjustment lines (==) or where indicated on pattern. If substantial length is added, you may need to purchase additional fabric.

TO SHORTEN: Crease along adjustment line. Make a fold half the amount needed. Tape in place.

TO LENGTHEN: Slash between adjustment lines. Spread amount as needed, keeping edges parallel. Tape over paper.

When Alteration lines are not on tissue, lengthen or shorten at lower edge.

CUTTING AND MARKING

SHRINK FABRIC if not labeled pre-shrunk. Press.

CIRCLE LAYOUT for View, Size, Fabric Width.

Use **WITH NAP** layout for fabrics with one-way designs, nap, pile or surface shading. Because most knits have surface shading, a with nap layout is used.

For **DOUBLE THICKNESS (WITH FOLD)** - fold fabric with right sides together.

***DOUBLE THICKNESS (WITHOUT FOLD)** - For fabrics with nap, fold fabric crosswise, right sides together. Mark as shown. Cut along crosswise fold of fabric (A). Turn upper layer 180° so arrows go in same direction and place over lower layer, right sides together (B).

For **SINGLE THICKNESS** - place fabric right side up. (For Fur Flee fabrics, place pile side down.)

★ Cut other pieces first, allowing enough fabric to cut this piece. Open fabric. For "Cut 1" pieces, cut piece once on single layer of fabric with piece face up on right side of fabric.

Pattern may have cutting lines for several sizes. Select the proper cutting line or pattern pieces for your size.

Before **CUTTING** place all pieces on fabric according to layout. Pin. (Layouts show approximate position of pattern pieces; position may vary according to your pattern size.) Cut **ACCURATELY**, cutting notches outward.

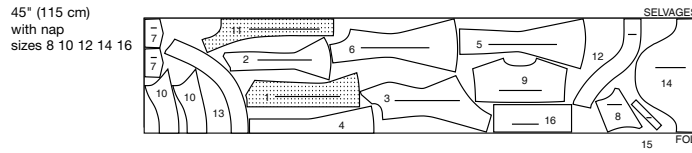
Before removing pattern, **TRANSFER MARKINGS** and lines of construction to Wrong Side of fabric, using the Pin and Chalk/Pencil method or Tracing Paper and Dressmaker Wheel. Markings needed on right side of fabric should be thread traced.

NOTE: Broken-line boxes (a| b| c|) in layouts represent pieces cut by measurements provided.

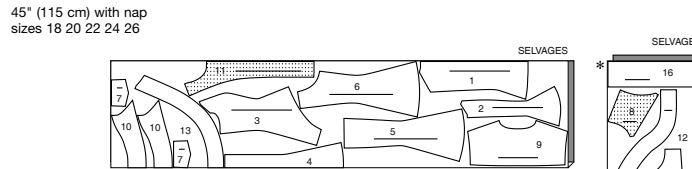
CUTTING LAYOUTS

TOP A

use pieces: 1 2 3 4 5 6 7 8 9 10 11 12 13 14 15 16

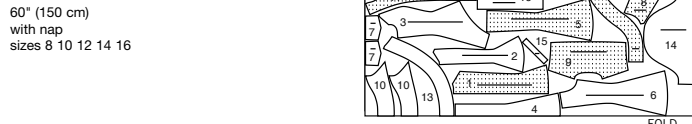


45" (115 cm) with nap sizes 8 10 12 14 16

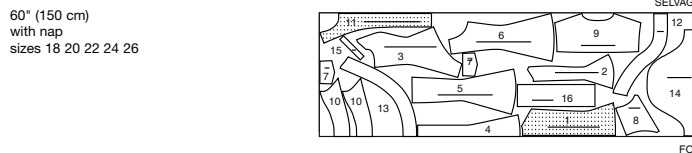


45" (115 cm) with nap sizes 18 20 22 24 26

60" (150 cm) with nap sizes 8 10 12 14 16



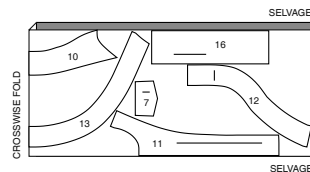
60" (150 cm) with nap sizes 18 20 22 24 26



INTERFACING A

use pieces: 7 10 11 12 13 16

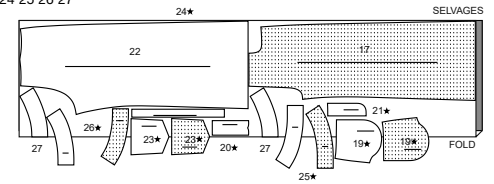
20" (51 cm) all sizes



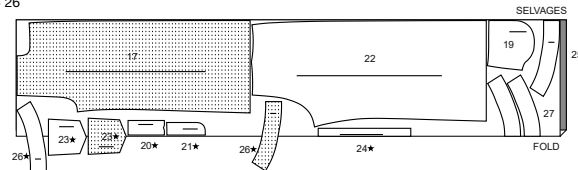
PANTS B

use pieces: 17 19 20 21 22 23 24 25 26 27

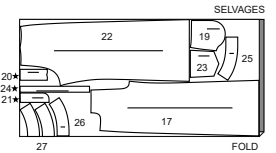
45" (115 cm) with nap sizes 8 10 12 14 16



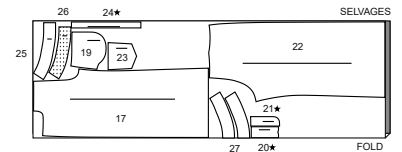
45" (115 cm) with nap sizes 18 20 22 24 26



60" (150 cm) with nap sizes 8 10 12



60" (150 cm) with nap sizes 14 16 18 20 22 24 26



LINING B (POCKET)

use piece: 18

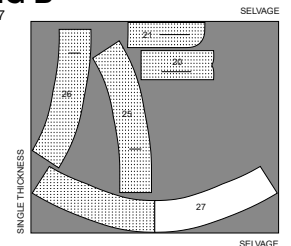
45" (115 cm) without nap all sizes



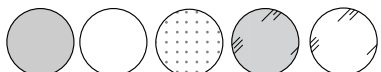
INTERFACING B

use pieces: 20 21 25 26 27

20" (51 cm) all sizes



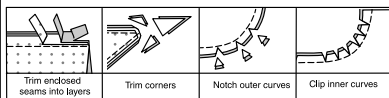
SEWING INFORMATION
FABRIC KEY



Right Side Fabric	Wrong Side Fabric	Interfacing	Right Side Lining	Wrong Side Lining
-------------------	-------------------	-------------	-------------------	-------------------

SEAM ALLOWANCES

Use 5/8" (1.5cm) seam allowances unless otherwise indicated.



PIN AND FIT

Pin or baste seams, **RIGHT SIDE TOGETHER**, matching notches. Fit garment before stitching major seams.

PRESS

Press seam allowances flat; then open unless otherwise stated. Clip where necessary so they lie flat.

GLOSSARY

Sewing terms appearing in **BOLD TYPE** in Sewing Instructions are explained below.

EASESTITCH - Stitch along seamline, using long machine stitches. Pull thread ends when adjusting to fit.

NOTE: For sleeve caps, make a second row of long machine stitches 1/4" (6mm) away in seam allowance, for more control.

EDGESEW - Stitch close to finished edge or seam.

FINISH - Stitch 1/4" (6mm) from raw edge and finish with one of the following: (1) Pink OR (2) Overcast OR (3) Turn in along stitching and stitch close to fold OR (4) Overlock. **OPTIONAL FOR HEMS:** Apply Seam Binding.

GATHER - Stitch along seamline and again 1/4" (6mm) away in seam allowance, using long machine stitches. Pull thread ends when adjusting to fit.

REINFORCE - Stitch along seamline where indicated in sewing instructions, using small machine stitches.

SLIPSTITCH - Slide needle through a folded edge, then pick up a thread of underneath fabric.

STAYSTITCH - Stitch 1/2" (1.3cm) from raw edge within seam allowance, in direction of arrows.

TOPSTITCH - On outside, stitch 1/4" (6mm) from edge, seam or previous stitching, using presser foot as guide, or stitch where indicated in instructions.

UNDERSTITCH - Open out facing or underside of garment; stitch to seam allowance close to seam.



@LWS_lynnwardrobesews

PATTERN PIECES WILL BE IDENTIFIED BY NUMBERS THE FIRST TIME THEY ARE USED.

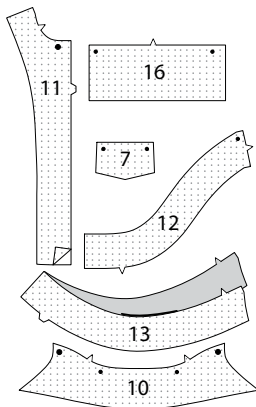
STITCH SEAMS WITH RIGHT SIDES TOGETHER UNLESS OTHERWISE STATED.

SEWING DIRECTIONS

TOP A

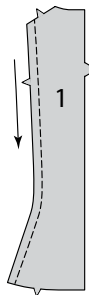
INTERFACING

1. Pin **INTERFACING** to wrong side of each matching **FABRIC** section. Fuse, following manufacturer's instructions.

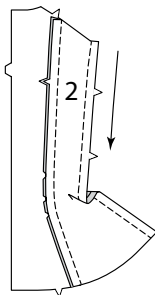


FRONT AND BACK

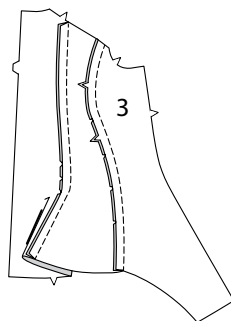
2. **STAYSTITCH** side edges of front (1) in direction of arrows.



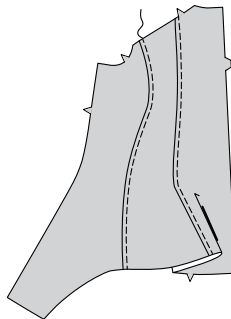
3. With right sides together, pin middle front (2) to side edge of front, matching notches. Clip to stay-stitching, if necessary. Baste. Stitch. Press seam toward front. **STAYSTITCH** side edges of middle front.



4. With right sides together, pin side front (3) to middle front, matching notches, clipping to stay-stitching if necessary. Baste. Stitch. Press seam towards front.



5. On outside, **TOPSTITCH** front seams, catching in pressed seam on inside.



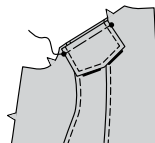
6. With right sides together, stitch flap (7) sections together, leaving edge with small dots open. Trim seam.



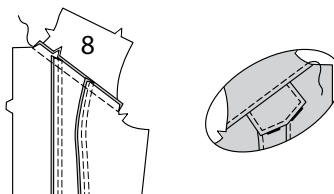
7. Turn flap right side out. Press. Baste raw edges together. **TOPSTITCH** outer edges of flap.



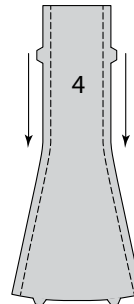
8. On outside, pin flap to upper edge of front, matching small dots. Baste.



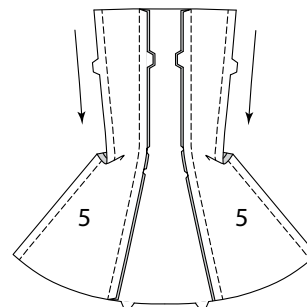
9. With right sides together, stitch yoke front (8) to upper edge of front matching notches. Press seam up. On outside, **TOPSTITCH** yoke seam.



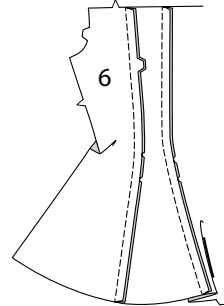
10. **STAYSTITCH** side edges of back (4), in direction of arrows.



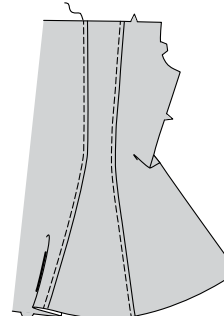
11. With right sides together, pin middle back (5) sections to each side of back, matching notches, clipping to stay-stitching if necessary. Baste. Stitch. Press seam toward center back. **STAYSTITCH** side edges of middle back.



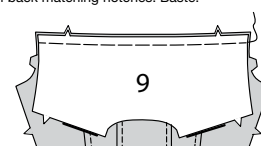
12. Pin **SIDE BACK** (6) to middle back, matching notches, clipping to stay-stitching if necessary. Baste. Stitch. Press seam toward center back.



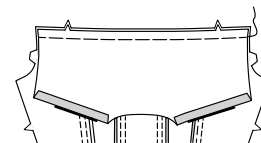
13. On outside, **TOPSTITCH** back seams, catching in pressed seams on inside.



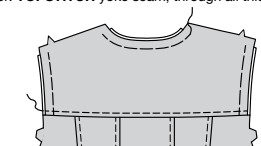
14. With right sides together, pin yoke back (9) to upper edge of back matching notches. Baste.



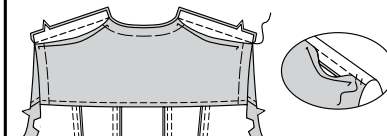
15. Press under shoulder edges of yoke back facing. On inside, pin right side of yoke to wrong side of back, matching notches. Baste. Stitch.



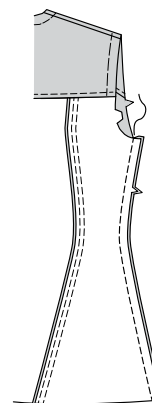
16. Press yoke sections up, over seam. Baste raw edges together. **TOPSTITCH** yoke seam, through all thicknesses.



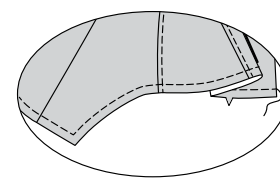
17. With right sides together, stitch front to back at shoulder seams, keeping pressed edge of yoke free. Press seams toward back. **SLIPSTITCH** pressed edge of yoke over seam.



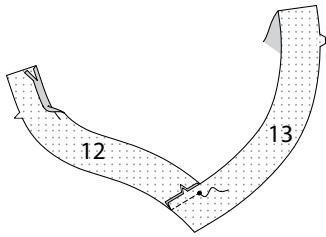
18. Stitch front to back at side seams.



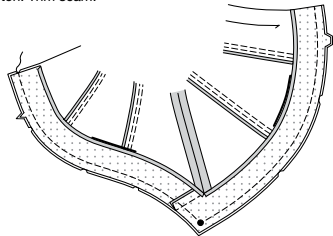
19. **STAYSTITCH** lower edge of garment.



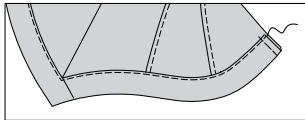
20. With right sides together, stitch front hem band (12) to back hem band (13) at notched edges ending at small dots. Press seam toward front. Press under seam allowance on unmarked edge of facing. Trim to 1/4"(6mm).



21. On inside, pin right side of facing to lower edge of garment, clipping to stay-stitching if necessary. Baste. Stitch. Trim seam.

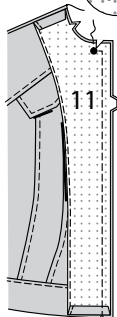


22. **UNDERSTITCH** garment as far as possible. Turn hem band to outside encasing seam. Baste close to inner pressed edge of hem band. On outside, **TOPSTITCH** band as basted. Baste front edges together.

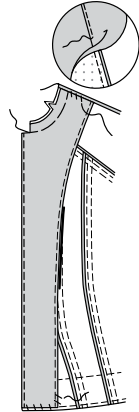


23. **FINISH** side edges of front facing (11). Turn under seam allowance on lower and shoulder edge of facing.

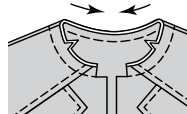
With right sides together, pin facing to front matching notches, and large dots. Stitch, ending at large dot, continuing across seam allowance to raw edge, as shown. Clip to large dot being careful not to clip through stitching.



24. **UNDERSTITCH** front edge of facing. Turn facing to inside. Press. Baste upper raw edges together. Hand-tack facing at shoulder seams. **SLIPSTITCH** lower edges of facing to hem facing, as shown.

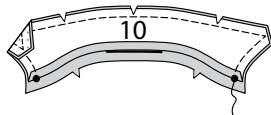


25. **STAYSTITCH** garment neck edge.

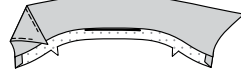


COLLAR

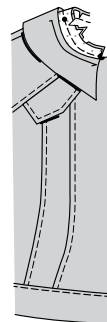
26. Press under 1/2"(1.3cm) on lower edge of collar (10) facing section. With right sides together, pin collar to facing matching large dots, having raw edges even. Stitch. Trim seam.



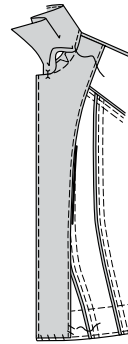
27. Turn collar right side out. Press. **UNDERSTITCH** collar as far as possible.



28. On outside, pin collar to neck edge matching notches and large dots, placing small dots at shoulder seams. Clip to stay-stitching if necessary. Baste. Stitch, keeping collar facing free. Trim seam. Clip curves.

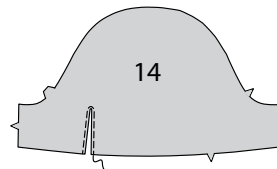


29. Press seam toward collar pressing collar out. Pin pressed edge of collar facing over seam, placing pins on outside. On outside, stitch in the ditch or "groove" of seam, catching in pressed edge on inside.

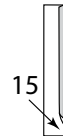


SLEEVES

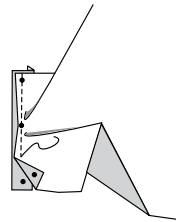
30. **REINFORCE** lower edge of sleeve (14) along stitching line. Slash between stitching to upper end.



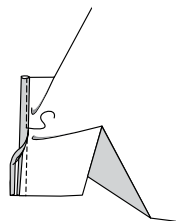
31. Turn in 1/4"(6mm) seam allowance on one long edge of continuous lap (15). Press.



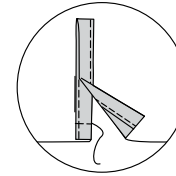
32. With right sides together, pin continuous lap to sleeve, placing remaining 1/4"(6mm) seamline along stitching. Stitch.



33. Press seam toward continuous lap. Turn pressed edge of continuous lap to inside over seam. Stitch. Press.



34. Turn front edge of continuous lap to inside, as shown. Baste across lower edge.



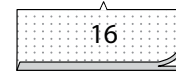
35. To make pleats in of sleeve on outside, fold along solid lines. Bring folds to broken lines; pin. Baste across upper raw edge.

EASESTITCH upper edge between notches. Stitch sleeve seam.

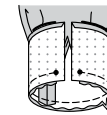
GATHER lower edge of sleeve between small dots.



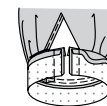
36. Press under 5/8" (1.5cm) on unnotched edge of cuff (16). Trim to 1/4" (6mm).



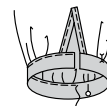
37. With right sides together, pin sleeve to cuff, placing opening edges at small dots. Adjust gathers. Baste. Stitch. Trim seam.



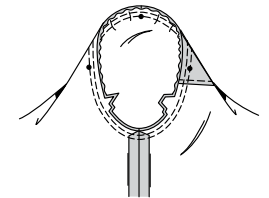
38. Press seam toward cuff, pressing cuff out. Fold cuff along fold line, with right sides together. Stitch ends. Trim seams.



39. Turn cuff; press. On inside, pin pressed edge of cuff over seam, placing pins on outside. On outside, **EDGESTITCH** cuff, catching in pressed edge of cuff on inside, continuing across cuff extension.

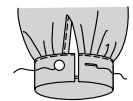


40. With right sides together, pin sleeve into armhole, placing center small dot at shoulder seam. Adjust ease; baste. Stitch. Stitch again 1/4"(6mm) away in seam allowance. Trim close to stitching. Press seam allowances flat. Turn seam toward sleeve.

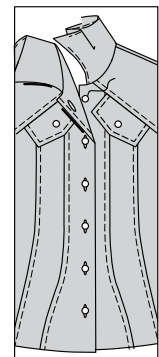


FINISHING

41. Make buttonhole in cuff at markings. Sew button to cuff at markings.



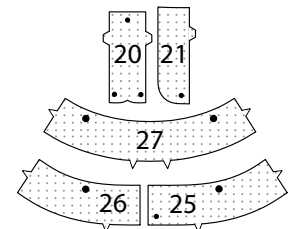
42. Make buttonholes in right front at markings. Lap right over left front matching centers. Sew buttons under buttonholes. Sew button to flap at markings through all thicknesses.



PANTS B

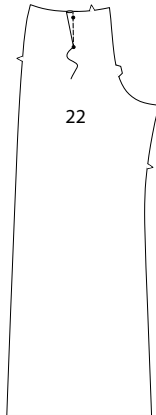
INTERFACING

1. Pin **INTERFACING** to wrong side of each matching **FABRIC** section. Fuse, following manufacturer's instructions.



BACK AND FRONT

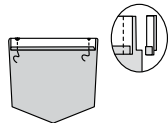
2. Stitch dart in back (22). Press toward side.



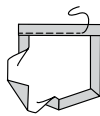
3. Turn in 1/4" (6mm) on upper edge of each back pocket (23). Press.



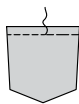
4. Turn upper edge to outside along foldline. Stitch ends. Trim.



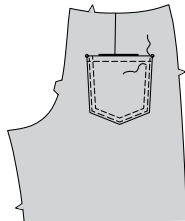
5. Turn upper edge of pocket to inside, turning in remaining seam allowances and diagonally folding corners. Press. Baste close to inner pressed edge.



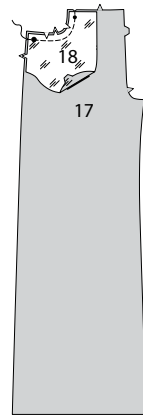
6. TOPSTITCH along basting.



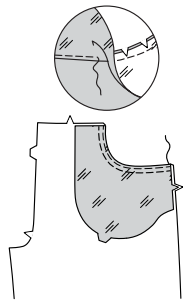
7. Pin pocket to back, matching large dots. EDGESTITCH and TOPSTITCH side and lower edges, (reinforcing upper ends).



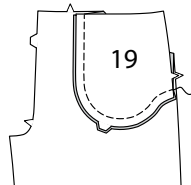
8. Stitch each POCKET FACING (18) section to each upper side edge of FRONT (17). Trim.



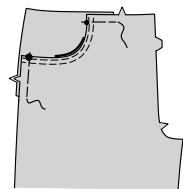
9. UNDERSTITCH pocket facing. Turn pocket to inside. Press. TOPSTITCH upper side edge of front.



10. Stitch one SIDE FRONT AND POCKET (19) section to each pocket at outer edge, keeping front free.

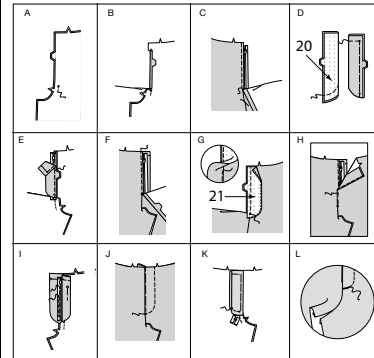


11. Baste upper and side edges.

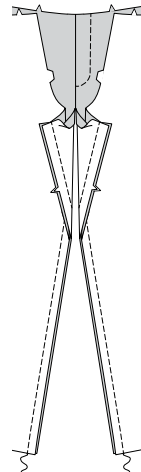


ZIPPER AND CROTCH SEAM

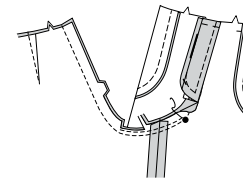
12. A-Stitch front sections together at center front between large dot and notch.
 B-Turn in right front opening edge along foldline; press.
 C-Place closed zipper (face up) under right front opening edge, having pressed edge close to zipper teeth and zipper stop at small dot. Using a zipper foot, baste close to pressed edge.
 D-With right sides together, fold right fly (20) along foldline. Stitch lower edge. Trim. Turn. Press. Baste raw edges.
 E-On inside, pin right fly to right front opening edge (over zipper), matching notches and small dots, having raw edges even. Baste along previous basting for zipper.
 F-On outside, using a zipper foot, stitch close to pressed edge of front through all layers.
 G-FINISH outer edge of left fly facing (21). Pin fly facing to left front opening edge, matching notches and large dots. Stitch, ending at large dot. Trim. UNDERSTITCH fly facing. Turn facing to inside.
 H-Lap left front over right, matching centers. Baste close to edge through all thicknesses.
 I-Pin right fly out of the way. Open out fly facing. Pin remaining zipper tape to fly facing, keeping left front free. Using a zipper foot, stitch in place close to zipper teeth and along center of zipper tape.
 J-Turn facing down. On outside, stitch left front along stitching line, keeping right fly free.
 K-Turn right fly back in place. On inside, hand tack fly and facing together at lower edge, as shown. Trim away excess zipper tape even with lower edge of fly, if needed.
 L-If desired, on outside, machine-stitch a bar tack across lower end of fly through all thicknesses.



13. Stitch front and back together at inner leg edges.

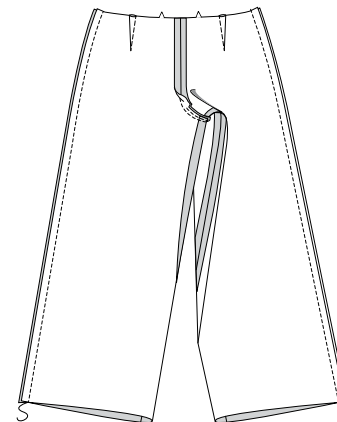


14. Stitch remainder of crotch seam to large dot in front. Stitch again 1/4" (1cm) away in seam allowance along curve, as shown. Trim close to second stitching.



SIDE SEAMS AND CARRIERS

15. Stitch back and front together at sides.



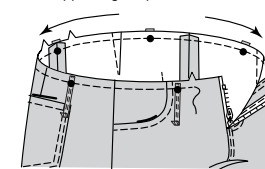
16. Turn in 1/4" (6mm) on long edges of CARRIERS (24); press. With wrong sides together, fold carriers in half lengthwise, having edges even; press. EDGESTITCH side edges, as shown.



17. Cut carriers into five sections, each 3-1/2" (9cm) long.



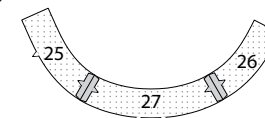
18. Press under 1/4" (6mm) on one end of carrier. On outside, pin carriers to upper edge of pants at large dots, having raw edges even, keeping pressed edge free. Baste. STAYSTITCH upper edge of pants between notches.



WAISTBAND

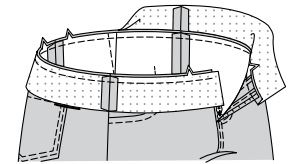
19. Stitch interfaced RIGHT FRONT WAISTBAND (25) and LEFT FRONT WAISTBAND (26) sections to interfaced BACK WAISTBAND (27) section at sides.

NOTE: Uninterfaced waistband sections will be used as facing.

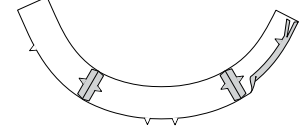


20. Pin waistband to upper edge of pants, matching notches, centers, and side seams, clipping pants where necessary.

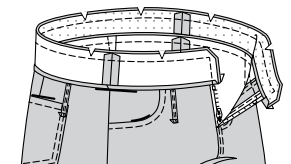
NOTE: Waistband will extend 5/8" (1.5cm) beyond opening edges. Stitch. Trim seam allowances. Press seam allowances toward waistband.



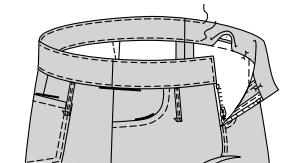
21. Stitch front waistband FACING sections to back waistband FACING section at sides. Press under 1/2" (1.5cm) on notched edge of waistband facing, easing in fullness if necessary. Trim.



22. Pin facing to waistband. Stitch ends and upper edge. Trim seam allowances.

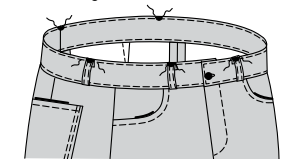


23. Turn facing to inside. Press. Pin pressed-under edge over seam, placing pins on outside. On outside, EDGESTITCH outer edges of waistband, catching in pressed edge of facing on inside.

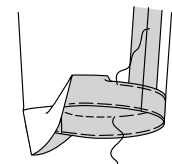


FINISHING

24. Turn carriers up, centering ends over large dots. EDGESTITCH in place connecting with previous stitching. Make buttonhole at left front at marking. Sew button to right waistband at marking.



25. Turn up hem. Baste close to fold. Turn in 1/4" (6mm) on raw edge, easing in fullness if necessary. Baste hem in place close to upper edge. Press. TOPSTITCH hem along upper basting, as shown.





Congrats!

You've completed your sewing adventure

SHARE YOUR LOOK



Post your pattern and tag us
[@simplicity_creative_group](#) and [#knowMepatterns](#)
for a chance to be featured on our social media.

Look for more PDF patterns at [simplicity.com](https://www.simplicity.com)

Have a question or need help with your sewing project call us at
1-800-782-0323

