

LYDIA NAOMI

knowME
BY mimi g

ME2068




Scan QR code for a Sew-Along video tutorial.



@Lydianaomistudio



Designed and printed in USA

Average

MISSES' SHIRTDRESS

Suggested Fabrics: Chambray, Cotton Blends, Lightweight Denim, Linen Blends, Poplin, Shirtings, Stretch Wovens, Twill. **Interfacing:** Lightweight Fusible.

Notions: Six 5/8" (1.5cm) buttons.

Sizes	8	10	12	14	16	18	20	22	24	26
European	34	36	38	40	42	44	46	48	50	52

BODY MEASUREMENTS: Select patte 1m size based on body measurements

Bust	31½	32½	34	36	38	40	42	44	46	48	Ins.
Waist	24	25	26½	28	30	32	34	37	39	41	"
Hip-9" below waist	33½	34½	36	38	40	42	44	46	48	50	"
Back-neck to waist	15¾	16	16¼	16½	16¾	17	17¼	17½	17¾	18	"

Shirtdress

45"	2¾	2¾	2¾	2¾	2¾	2¾	3¾	3¾	3¾	3¾	Yds.
60"	2	2	2	2	2	2	2¾	2¾	2¾	2¾	"

Interfacing

20"	1½	1½	1½	1½	1½	1¾	1¾	1¾	1¾	1¾	Yds.
-----	----	----	----	----	----	----	----	----	----	----	------

FINISHED GARMENT MEASUREMENTS (Includes Design and Wearing Ease)

Bust	39	40	41½	43½	45½	47½	49½	51½	53½	55½	Ins.
Waist	34½	35½	37	39	41	43	45	47	49	51	"
Hip	39½	40½	42	44	46	48	50	52	54	56	"
Finished back length from base of neck											
Shirtdress	35¼	35½	35¾	36	36¼	36½	36¾	37	37¼	37½	Ins.

*with nap **without nap

Moins Facile

ROBE CHEMISIER POUR JEUNES FEMMES

Tissus Conseillés: Chambray, Cotonnades, Denim léger, Lin mélangés, Popeline, Shirtings, Tissus tissés extensibles, Twill. **Entoilage:** Thermocollant léger.

Mercerie: 6 boutons de 1.5cm.

Tailles	8	10	12	14	16	18	20	22	24	26
Françaises	36	38	40	42	44	46	48	50	52	54
Européen	34	36	38	40	42	44	46	48	50	52

MESURES DU CORPS: Choisissez la taille du patron basée sur les mesures du corps

Poitrine	80	83	87	92	97	102	107	112	117	122	cm
Taille	61	64	67	71	76	81	87	94	99	104	"
Hanches (23cm au-dessous de la taille)	85	88	92	97	102	107	112	117	122	127	cm

Dos du cou à la taille	40	40.5	41.5	42	42.5	43	44	44.5	45	46	"
-------------------------------	----	------	------	----	------	----	----	------	----	----	---

Robe chemisier

115cm*	2.5	2.5	2.5	2.5	2.5	2.6	2.9	2.9	2.9	3.0	m
150cm*	1.8	1.8	1.8	1.8	1.8	1.8	2.2	2.2	2.2	2.3	"

Entoilage

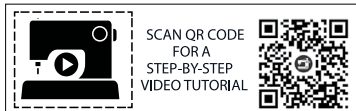
51cm	1.4	1.4	1.4	1.4	1.4	1.5	1.5	1.5	1.5	1.5	m
------	-----	-----	-----	-----	-----	-----	-----	-----	-----	-----	---

MESURES DES VÊTEMENTS FINI (Motif et aisance de port compris)

Poitrine	99	102	105	110	116	121	126	131	136	141	cm
Taille	88	90	94	99	104	109	114	119	124	130	"
Hanches	100	103	107	112	117	122	127	127	127	142	"
Longueur finie – dos, votre nuque à l'ourlet											
Shirtdress	90	90	91	91	92	93	93	94	95	95	cm

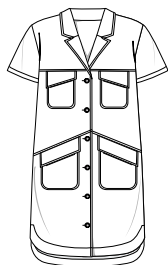
*avec sens **sans sens



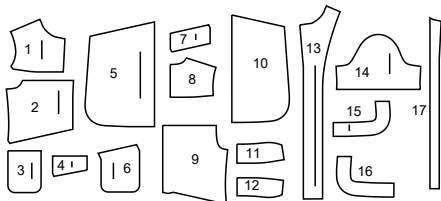


SCAN QR CODE FOR A STEP-BY-STEP VIDEO TUTORIAL

@lydianaomistudio



17 PATTERN PIECES



- 1 Yoke Front
- 2 Upper Front
- 3 Upper Pocket
- 4 Upper Flap
- 5 Lower Front
- 6 Lower Pocket
- 7 Lower Flap
- 8 Yoke Back
- 9 Upper Back
- 10 Lower Back
- 11 Upper Collar
- 12 Under Collar
- 13 Front Facing
- 14 Sleeve
- 15 Lower Front Facing
- 16 Lower Back Facing
- 17 Guide for Buttonholes

PATTERN MARKINGS

GRAINLINE: Place on straight grain of fabric, parallel to selvage or fold.

FOLDLINE: Place line on fold of fabric.

BUTTONHOLE MARKING: Indicates exact length and placement of buttonholes.

BUTTON MARKING: Indicates button placement.

NOTCHES AND SYMBOLS: For matching seams and construction details.

Indicates the Bustline, Waistline, Hip and/or Biceps. Measurements refer to circumference of Finished Garment (Body Measurement + Wearing Ease + Design Ease). Adjust pattern if necessary. The measurement excludes pleats, tucks, darts and seam allowances.

SEAM ALLOWANCE: 5/8" (1.5cm) included unless otherwise indicated, but not printed on tissue.

ADJUST IF NECESSARY

Lengthen or Shorten at adjustment lines (==) or where indicated on pattern. If substantial length is added, you may need to purchase additional fabric.

TO SHORTEN: Crease along adjustment line. Spread amount as needed, keeping edges parallel. Tape over paper.

TO LENGTHEN: Slash between adjustment lines. Spread amount as needed, keeping edges parallel. Tape over paper.

When Alteration lines are not on tissue, lengthen or shorten at lower edge.

CUTTING AND MARKING

SHRINK FABRIC if not labeled pre-shrunk. Press.

CIRCLE LAYOUT for View, Size, Fabric Width.

Use **WITH NAP** layout for fabrics with one-way designs, nap, pile or surface shading. Because most knits have surface shading, a with nap layout is used.

For **DOUBLE THICKNESS (WITH FOLD)** - fold fabric with right sides together.

*** DOUBLE THICKNESS (WITHOUT FOLD)** - For fabrics with nap, fold fabric crosswise, right sides together. Mark as shown. Cut along crosswise fold of fabric (A). Turn upper layer 180° so arrows go in same direction and place over lower layer, right sides together (B).

For **SINGLE THICKNESS** - place fabric right side up. (For Fur Pile fabrics, place pile side down.)

★ Cut other pieces first, allowing enough fabric to cut this piece. Open fabric. For "Cut 1" pieces, cut piece once on single layer of fabric with piece face up on right side of fabric.

Pattern may have cutting lines for several sizes. Select the proper cutting line or pattern pieces for your size.

Before **CUTTING** place all pieces on fabric according to layout. Pin. (Layouts show approximate position of pattern pieces; position may vary according to your pattern size.) Cut **ACCURATELY**, cutting notches outward.

Before removing pattern, **TRANSFER MARKINGS** and lines of construction to Wrong Side of fabric, using the Pin and Chalk Pencil method or Tracing Paper and Dressmaker Wheel. Markings needed on right side of fabric should be thread traced.

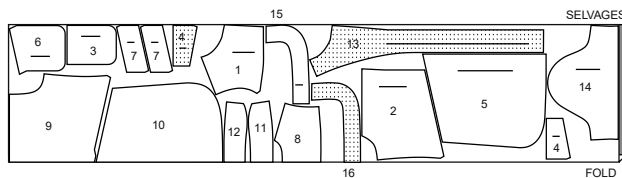
NOTE: Broken-line boxes (a| b| c|) in layouts represent pieces cut by measurements provided.

CUTTING LAYOUTS

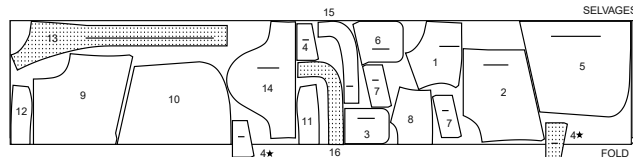
DRESS

pieces 1 2 3 4 5 6 7 8 9 10 11 12 13 14 15 16

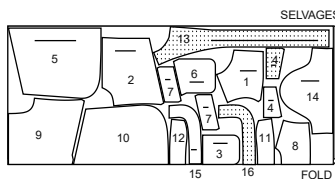
45" (115cm) with nap sizes 8-10-12-14-16-18



45" (115cm) with nap sizes 20-22-24-26

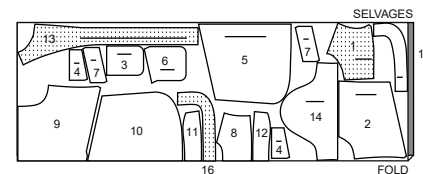


60" (150cm) with nap sizes 8-10-12-14-16-18



RIGHT SIDE OF PATTERN	WRONG SIDE OF PATTERN	RIGHT SIDE OF FABRIC	WRONG SIDE OF FABRIC
-----------------------	-----------------------	----------------------	----------------------

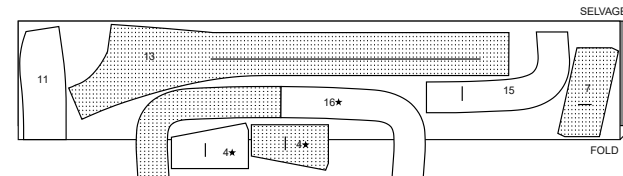
60" (150cm) with nap sizes 20-22-24-26



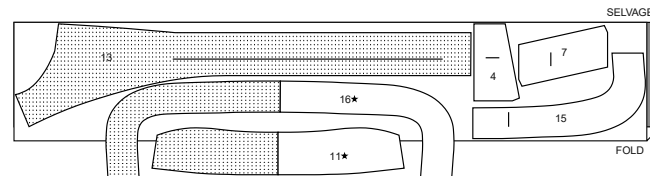
INTERFACING

pieces 4 7 11 13 15 16

20" (51cm) sizes 8-10-12-14-16

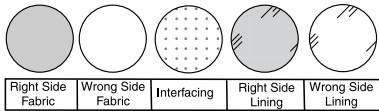


20" (51cm) sizes 18-20-22-24-26



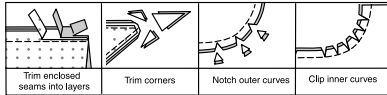
SEWING INFORMATION

FABRIC KEY



SEAM ALLOWANCES

Use 5/8" (1.5cm) seam allowances unless otherwise indicated.



PIN AND FIT

Pin or baste seams, **RIGHT SIDE TOGETHER**, matching notches. Fit garment before stitching major seams.

PRESS

Press seam allowances flat; then open unless otherwise stated. Clip where necessary so they lie flat.

GLOSSARY

Sewing terms appearing in **BOLD TYPE** in Sewing Instructions are explained below.

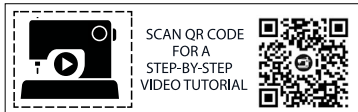
EASE – Loosen needle tension slightly. With right side up, stitch 5/8" (1.5cm) from cut edge using a long stitch. Stitch again 1/4" (6mm) from the first stitching within the seam allowance.

EDGESTITCH – Stitch close to finished edge or seam.

STAY-STITCH – Stitch 1/2" (1.3cm) from cut edge in direction of arrows. This stitching stays in permanently to prevent stretching on curved edges. (Shown only in the first illustration.)

TOPSTITCH – On outside, stitch 1/4" (6mm) from edge, seam or previous stitching, using presser foot as guide, or stitch where indicated in instructions.

UNDERSTITCH – Press facing and seam away from garment, stitching through facing and seam allowances close to seam.



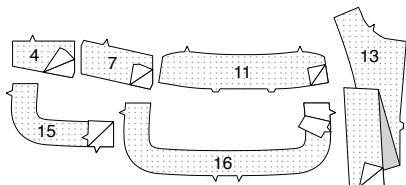
@lydianaomistudio

SEWING DIRECTIONS

SHIRT DRESS

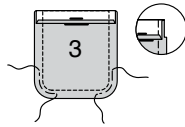
INTERFACING

1. Pin interfacing to wrong side of **UPPER FLAP (4)**, **LOWER FLAP (7)**, **UPPER COLLAR (11)**, **FRONT FACING (13)**, **LOWER FRONT FACING (15)**, and **LOWER BACK FACING (16)**. Fuse interfacing in place following manufacturer's directions.



POCKETS AND FLAPS

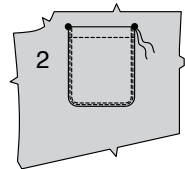
2. Press under 1/4" (6mm) on upper edge of **UPPER POCKET (3)**. Turn upper edge to outside along fold line, forming facing. Stitch along seam line on raw edges. To ease curved edge of pocket, stitch 1/4" (6mm) inside the seam line, using a long machine-stitch. Trim seam allowance in the facing area to 1/4" (6mm).



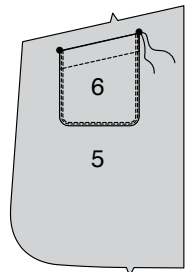
3. Turn corners right side out, turning facing to the wrong side; press, pressing under raw edges along stitching. Pull up ease stitches to shape the curve. To eliminate bulk, notch out the fullness in the seam allowance along the curves as far as the ease stitches. Stitch facing close to inner edge.



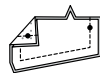
4. On outside, pin pocket to **UPPER FRONT (2)** along pocket line, matching large dots. **EDGESTITCH** and **TOPSTITCH** pocket in place.



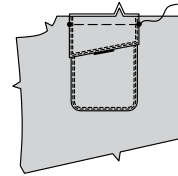
5. Make **LOWER POCKET (6)** and stitch to **LOWER FRONT (5)** in the same manner.



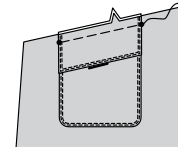
6. With right sides together, stitch facing to **UPPER FLAP (4)**, leaving edge with small dots open. Trim seam and corners.



7. Turn flap; press. Machine-baste 5/8" (1.5cm) from raw edge. **EDGESTITCH** and **TOPSTITCH** finished edge. On outside, pin flap to upper front, matching small dots, baste.

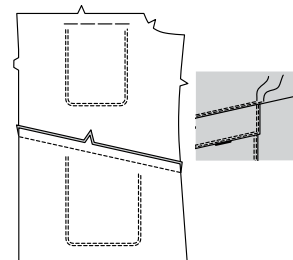


8. Make **LOWER FLAP (7)** and baste to lower front in the same manner.

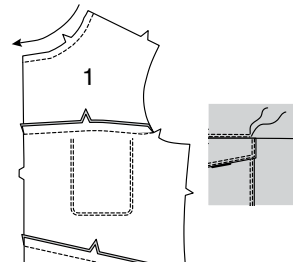


FRONT

9. With right sides together and raw edges even, pin upper edge of lower front to lower edge of upper front, matching notches. Stitch. Press seam toward upper front. **EDGESTITCH** and **TOPSTITCH** upper front close to seam.

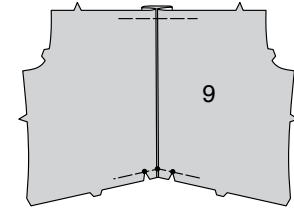


10. **STAYSTITCH** neck edge of **YOKE FRONT (1)**. With right sides together and raw edges even, pin upper edge of upper front to lower edge of yoke front, matching notches. Stitch. Press seam toward yoke front. **EDGESTITCH** and **TOPSTITCH** yoke front close to seam.

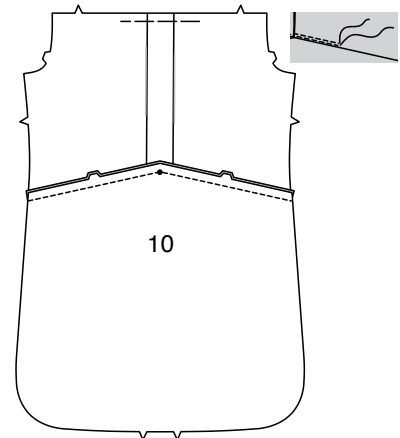


BACK

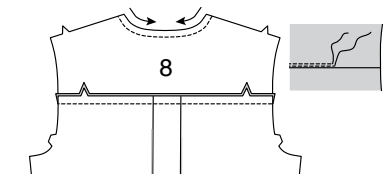
11. To make pleats in **UPPER BACK (9)**, on outside, fold along solid lines. Bring folds to broken lines (center back), matching small dots; pin. Stitch across raw edges. Clip lower edge of upper back to stitching at small dot.



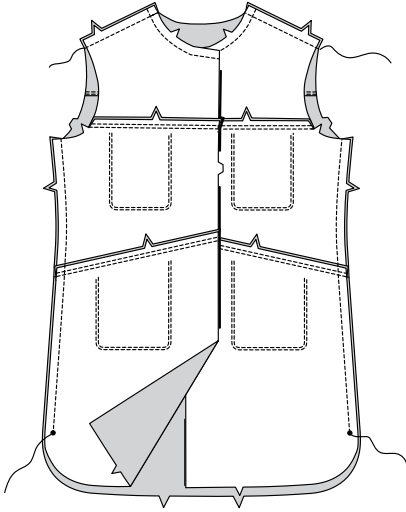
12. With right sides together and raw edges even, pin upper edge of **LOWER BACK (10)** to lower edge of upper back, matching small dots and notches. Stitch, pivoting with needle in fabric at small dot. Press seam toward upper back. **EDGESTITCH** and **TOPSTITCH** upper back close to seam.



13. **STAYSTITCH** neck edge of **YOKE BACK (8)**. With right sides together and raw edges even, pin upper edge of upper back to lower edge of yoke back, matching notches. Stitch. Press seam toward yoke back. **EDGESTITCH** and **TOPSTITCH** yoke back close to seam.

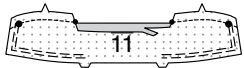


14. Stitch front to back at shoulder edges, and side edges from armhole edge to large dot, back-stitching at dot to reinforce the seam.

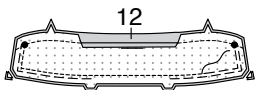


COLLAR AND FACING

15. Machine-stitch 5/8" (1.5cm) from single notched edge of UPPER COLLAR (11). Clip notched edge of collar to stitching at small dots. Press under 5/8" (1.5cm) on raw edge between clips. Trim to 1/4" (6mm). EASE stitch upper and side edge, between the large dot and double notch.



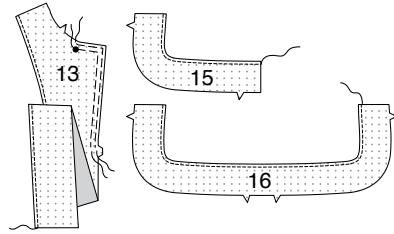
16. With right sides together, pin UNDER COLLAR (12) to upper collar, pulling up ease stitches to fit. Baste; stitch, leaving single notched edge open. Trim seam and corners.



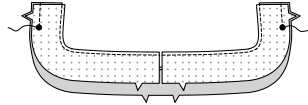
17. UNDERSTITCH the under collar. Turn collar; press. Clip neck edge of yoke to stay-stitching. On outside, pin collar (under collar side) to neck edge, matching centers and large dots, placing small dot at shoulder seam. Baste both upper collar and under collar to front neck edge as far as small dot. Baste only the under collar section to remaining neck edge between small dots.



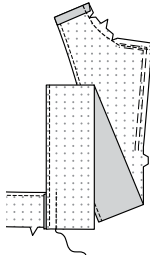
18. Finish inner unnotched edges of FRONT FACING (13), LOWER FRONT FACING (15), and LOWER BACK FACING (16) with a straight stitch 1/4" (6mm) from raw edge, or zigzag stitch, or overlock stitch. EASE stitch front and neck edge of front facing from large dot to double notch.



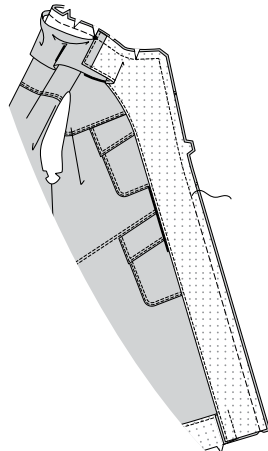
19. Pin lower front facing to lower back facing at side edges, matching large dots and notches. Stitch from upper edge to large dot, back-stitching at dot to reinforce the seam.



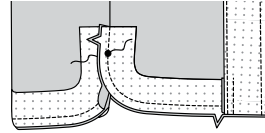
20. With right sides together and raw edges even, pin end of lower front facing to inner edge of front facing. Stitch in a 5/8" (1.5cm) seam. Press seam toward lower front facing. Machine-stitch 1/2" (1.3cm) from neck edge of front facing. Clip neck edge of facing to stitching. Press under 5/8" (1.5cm) on shoulder edge.



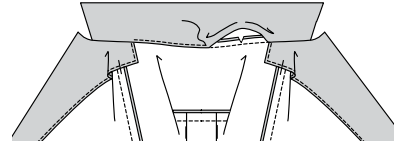
21. With right sides together, pin facing to neck and front edges of dress, pulling up ease stitches to fit. Baste. Clip neck edge through all thicknesses at small dot. Stitch front and neck edge as basted, being careful not to catch in free edge of collar. Trim seam and corners; clip curves.



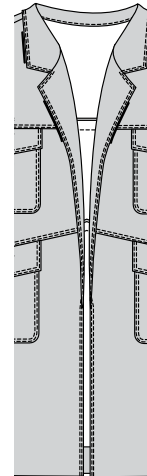
22. Pin facing to lower edge of dress; baste. Stitch, breaking stitching at large dots on side seam. Trim seam and corners; clip curves.



23. Turn facing to inside, turning back neck seam toward collar; press. Stitch pressed edge of upper collar over neck seam. Tack facing to shoulder seam allowances.



24. On outside, EDGESTITCH and TOPSTITCH front, neck, and collar edges.

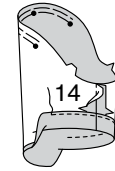


25. TOPSTITCH 1-1/2" (3.8cm) from lower edge of dress, squaring stitching above side opening end, catching in facing on the inside.

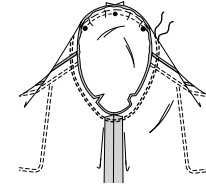


SLEEVE

26. EASE top of SLEEVE (14) between small dots. Stitch underarm seam. Press up hem 1-1/4" (3.2cm). Press under raw edge 1/4" (6mm). Stitch close to inner pressed edge.

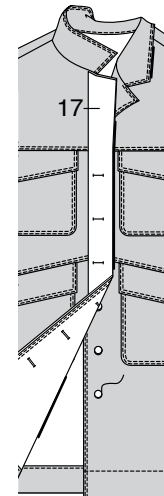


27. Turn sleeve right side out. Hold dress wrong side out with armhole toward you. With right sides together, pin sleeve to armhole edge with center small dot at shoulder seam, matching underarm seams, notches and remaining small dots. Pull up ease stitches to fit. To distribute fullness evenly, slide fabric along bobbin threads until there are no puckers or tucks on the seam line. Baste. Stitch. Stitch again 1/8" (3mm) from first stitching. Trim seam below notches close to stitching. Press only the seam allowance, shrinking out fullness.



FINISHING

28. To mark buttonholes in right front place GUIDE FOR BUTTONHOLES (17) along finished edge of dress, matching centers, as shown. Transfer buttonhole markings. Make buttonholes at markings. Lap right front over left, matching centers. Sew buttons under buttonholes.





Congrats!

You've completed your sewing adventure

SHARE YOUR LOOK



Post your pattern and tag us
@simplicity_creative_group and **#knowMepatterns**
for a chance to be featured on our social media.

Look for more PDF patterns at **simplicity.com**

Have a question or need help with your sewing project call us at
1-800-782-0323

