



THE STITCH FITZ  
**knowME**  
BY MIMI G

ME2067



Scan QR code for a Sew-Along video tutorial.



@thestitchfitz





												Average
MISSES' DRESSES												
<b>Suggested Fabrics:</b> Charmeuse, Crepe, Silky Types, Soft Cotton Blends. <b>Lining A,B (Bodice):</b> Cotton Blends, Poly Blends. <b>Interfacing:</b> Lightweight Fusible.												
<b>Notions:</b> A,B: 2 yds. (1.8m) of ¼" (6mm) featherweight boning, ¾ yd. (0.7m) of ¾" (1cm) elastic, one 20" (51cm) invisible zipper, one hook and eye, pair of ¾" (1.5cm) bra strap sliders and rings (opt.).												
Sizes	6	8	10	12	14	16	18	20	22	24		
European	32	34	36	38	40	42	44	46	48	50		
BODY MEASUREMENTS: Select pattern size based on body measurements												
Bust	30½	31½	32½	34	36	38	40	42	44	46	Ins.	
Waist	23	24	25	26½	28	30	32	34	37	39	"	
Hip-9" below waist	32½	33½	34½	36	38	40	42	44	46	48	"	
Back-neck to waist	15½	15¾	16	16¼	16½	16¾	17	17¼	17½	17¾	"	
Lining A,B (Bodice)												
	45**	%	%	%	%	¾	¾	¾	¾	¾	¾	Yds.
Interfacing A,B	20"	1¾	1¾	1¾	1¾	1½	1½	1½	1¾	1¾	1¾	"
Dress A	45**	3½	3½	3½	3½	3½	4¼	4¼	4¼	4¼	4¼	Yds.
	60**	2¾	2¾	2¾	2¾	2¾	2¾	3¾	3¾	3¾	3¾	"
Dress B	45**	2¾	2¾	2¾	2¾	2¾	2¾	2¾	2¾	2¾	2¾	Yds.
	60**	2	2	2	2	2	2	2	2½	2½	2½	"
FINISHED GARMENT MEASUREMENTS (Includes Design and Wearing Ease)												
A,B Bust	34	35	36	37½	39½	41½	43½	45½	47½	49½	Ins.	
A,B Waist	24	25	26	27½	29½	31½	33½	35½	37½	39½	"	
A,B Hip	38	39	40	41½	43½	45½	47½	49½	51½	53½	"	
Width, lower edge												
Dress B	44¾	45¾	46¾	48¾	50¾	52¾	54¾	56¾	58¾	60¾	Ins.	
Finished back length from base of neck												
Dress B	33½	33¾	34	34¼	34½	34¾	35	35¼	35½	35¾	Ins.	
*with nap    **without nap												

\*with nap \*\*without nap

Moins Facile

ROBES POUR JEUNES FEMMES												
<b>Tissus Conseillés:</b> Charmeuse, Crêpe, Tissus soyeux, Cottonnades souple. <b>Doublure A,B (Corsage):</b> Cottonnades, Mélanges de polyester. <b>Entoilage:</b> thermocollant léger.												
<b>Mercurie:</b> A,B: 1.8m de baleine très léger, 0,7m d'élastique de 1cm, 1 fermeture à glissière invisible de 51cm, 1 agrafe, 1 paire de régisseurs soutien-gorge de 1.5cm (facultatif).												
Tailles	6	8	10	12	14	16	18	20	22	24		
Françaises	34	36	38	40	42	44	46	48	50	52		
Européen	32	34	36	38	40	42	44	46	48	50		
<b>MESURES DU CORPS: Choisissez la taille du patron basée sur les mesures du corps</b>												
Poitrine	78	80	83	87	92	97	102	107	112	117	cm	
Taille	58	61	64	67	71	76	81	87	94	99	"	
<b>Hanches (23cm au-dessous de la taille)</b>												
	83	85	88	92	97	102	107	112	117	122	cm	
Dos du cou à la taille	39.5	40	40.5	41.5	42	42.5	43	44	44.5	45	"	
<b>Doublure A,B (Corsage)</b>												
	115cm*	0.5	0.6	0.6	0.6	0.6	0.7	0.7	0.7	0.7	0.7	m
Entoilage A,B	51cm	1.3	1.3	1.3	1.3	1.3	1.4	1.4	1.5	1.5	1.5	"
Robe A	115cm*	3.2	3.2	3.2	3.2	3.2	3.9	3.9	3.9	3.9	3.9	m
	150cm*	2.5	2.5	2.5	2.5	2.5	3.0	3.0	3.0	3.1	3.1	"
Robe B	115cm*	2.3	2.4	2.4	2.4	2.4	2.4	2.4	2.4	2.5	2.5	m
	150cm*	1.8	1.8	1.8	1.8	1.8	1.8	1.8	1.8	1.9	1.9	"
<b>MESURES DES VÊTEMENTS FINI (Motif et aisance de port compris)</b>												
A,B Poitrine	86	89	91	95	100	105	110	116	121	126	cm	
A,B Taille	61	64	66	70	75	80	85	90	95	100	"	
A,B Hanches	97	99	102	105	110	116	121	126	131	136	"	
<b>Largeur à l'ourlet</b>												
Robe B	114	116	119	123	128	133	138	143	148	153	cm	
<b>Longueur finie – dos, votre nuque à l'ourlet</b>												
Robe B	85	86	86	87	88	88	89	90	90	91	cm	

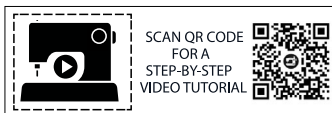
\*avec sens \*\*sans sens



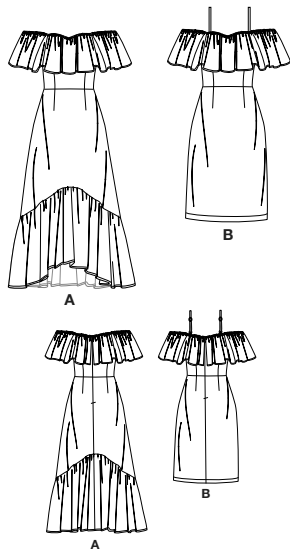
A



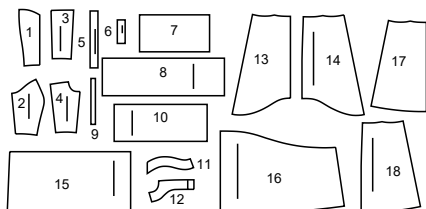
B



@thestitchfitz



## 18 PATTERN PIECES

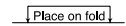


- 1 Bodice Front-A,B
- 2 Bodice Side Front-A,B
- 3 Bodice Back-A,B
- 4 Bodice Side Back-A,B
- 5 Shoulder Strap-A,B
- 6 Loop-A,B
- 7 Front Ruffle-A,B
- 8 Armhole Ruffle-A,B
- 9 Guide for Elastic-A,B
- 10 Back Ruffle-A,B
- 11 Front Facing-A,B
- 12 Back Facing-A,B
- 13 Skirt Front-A
- 14 Skirt Back-A
- 15 Front Lower Ruffle-A
- 16 Back Lower Ruffle-A
- 17 Skirt Front-B
- 18 Skirt Back-B

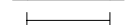
## PATTERN MARKINGS



**GRAINLINE:** Place on straight grain of fabric, parallel to selvage or fold.



**FOLDLINE:** Place line on fold of fabric.



**BUTTONHOLE MARKING:** Indicates exact length and placement of buttonholes.



**BUTTON MARKING:** Indicates button placement.



**NOTCHES AND SYMBOLS:** For matching seams and construction details.



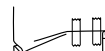
Indicates the Bustline, Waistline, Hip and/or Biceps. Measurements refer to circumference of Finished Garment (Body Measurement + Wearing Ease + Design Ease). Adjust pattern if necessary. The measurement excludes pleats, tucks, darts and seam allowances.

**SEAM ALLOWANCE:** 5/8" (1.5cm) included unless otherwise indicated, but not printed on tissue.

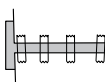
## ADJUST IF NECESSARY

Lengthen or Shorten at adjustment lines (==) or where indicated on pattern. If substantial length is added, you may need to purchase additional fabric.

**TO SHORTEN:** Crease along adjustment line. Make a fold half the amount needed. Tape in place.



**TO LENGTHEN:** Slash between adjustment lines. Spread amount as needed, keeping edges parallel. Tape over paper.



When Alteration lines are not on tissue, lengthen or shorten at lower edge.

## CUTTING AND MARKING

**SHRINK FABRIC** if not labeled pre-shrunk. Press.

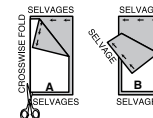
**CIRCLE LAYOUT** for View, Size, Fabric Width.

Use **WITH NAP** layout for fabrics with one-way designs, nap, pile or surface shading. Because most knits have surface shading, a with nap layout is used.

For **DOUBLE THICKNESS (WITH FOLD)** - fold fabric with right sides together.

**\* DOUBLE THICKNESS (WITHOUT FOLD)** - For fabrics with nap, fold fabric crosswise, right sides together. Mark as shown. Cut along crosswise fold of fabric (A). Turn upper layer 180° so arrows go in same direction and place over lower layer, right sides together (B).

For **SINGLE THICKNESS** - place fabric right side up. (For Fur Flee fabrics, place pile side down.)



★ Cut other pieces first, allowing enough fabric to cut this piece. Open fabric. For "Cut 1" pieces, cut piece once on single layer of fabric with piece face up on right side of fabric.

Pattern may have cutting lines for several sizes. Select the proper cutting line or pattern pieces for your size.

Before **CUTTING** place all pieces on fabric according to layout. Pin. (Layouts show approximate position of pattern pieces; position may vary according to your pattern size.) Cut **ACCURATELY**, cutting notches outward.

Before removing pattern, **TRANSFER MARKINGS** and lines of construction to Wrong Side of fabric, using the Pin and Chalk Pencil method or Tracing Paper and Dressmaker Wheel. Markings needed on right side of fabric should be thread traced.

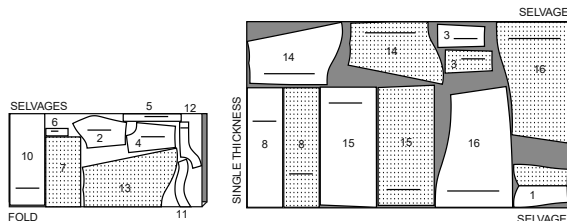
**NOTE:** Broken-line boxes (a! b! c!) in layouts represent pieces cut by measurements provided.

## CUTTING LAYOUTS

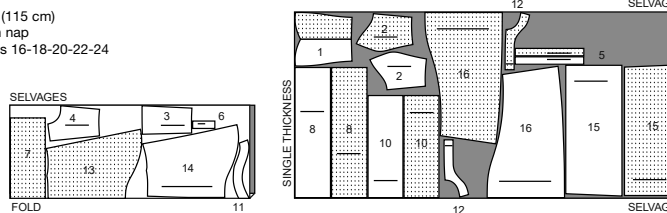
## DRESS A

use pieces: 1 2 3 4 5 6 7 8 10 11 12 13 14 15 16

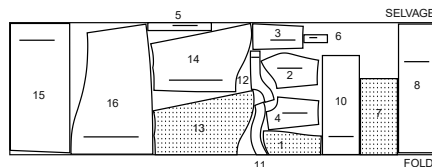
45" (115 cm)  
with nap  
sizes 6-8-10-12-14



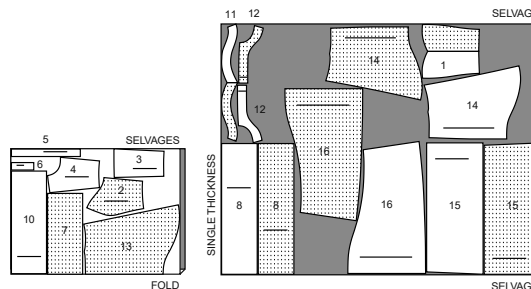
45" (115 cm)  
with nap  
sizes 16-18-20-22-24



60" (150 cm)  
with nap  
sizes 6-8-10-12-14-16



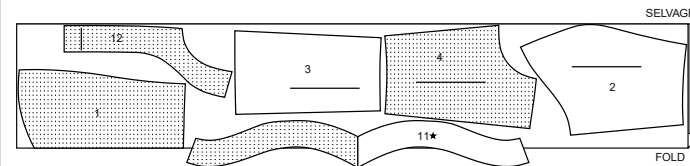
60" (150 cm)  
with nap  
sizes 18-20-22-24



## INTERFACING A,B

use pieces: 1 2 3 4 11 12

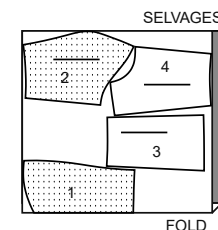
20" (51 cm)  
all sizes



## LINING A,B

use pieces: 1 2 3 4

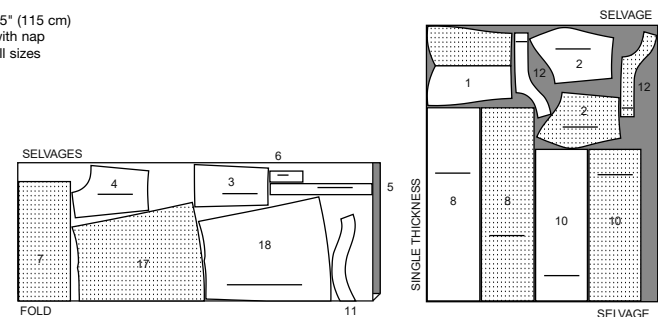
45" (115 cm)  
without nap  
all sizes



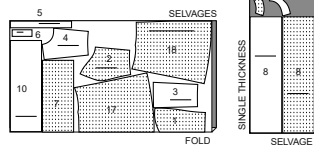
## DRESS B

use pieces: 1 2 3 4 5 6 7 8 10 11 12 17 18

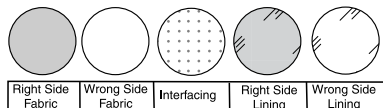
45" (115 cm)  
with nap  
all sizes



60" (150 cm)  
with nap  
all sizes

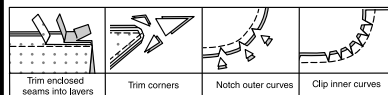


## SEWING INFORMATION FABRIC KEY



## SEAM ALLOWANCES

Use 5/8" (1.5cm) seam allowances unless otherwise indicated.



## PIN AND FIT

Pin or baste seams, **RIGHT SIDE TOGETHER**, matching notches. Fit garment before stitching major seams.

## PRESS

Press seam allowances flat; then open unless otherwise stated. Clip where necessary so they lie flat.

## GLOSSARY

Sewing terms appearing in **BOLD TYPE** in Sewing Instructions are explained below.

**EDGE STITCH** - Stitch close to finished edge or seam.

**FINISH** - Stitch 1/4" (6mm) from raw edge and finish with one of the following: (1) Pink OR (2) Overcast OR (3) Turn in along stitching and stitch close to fold OR (4) Overlock.

**OPTIONAL FOR HEMS:** Apply Seam Binding.

**GATHER** - Stitch along seamline and again 1/4" (6mm) away in seam allowance, using long machine stitches. Pull thread ends when adjusting to fit.

**NARROW HEM** - Turn in hem; press, easing in fullness if necessary. Open out hem. Turn in again so raw edge is along crease; press. Turn in along crease; stitch.

**SLIPSTITCH** - Slide needle through a folded edge, then pick up a thread of underneath fabric.

**STAYSTITCH** - Stitch 1/8" (3mm) from seamline in seam allowance (usually 1/2" (13mm) from raw edge).

**UNDERSTITCH** - Open out facing or underside of garment; stitch to seam allowance close to seam.



SCAN QR CODE  
FOR A  
STEP-BY-STEP  
VIDEO TUTORIAL



@thestitchfitz

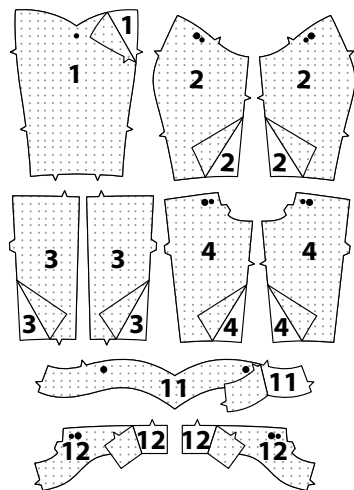
# SEWING DIRECTIONS

## DRESS A, B

**NOTE:** Under each subheading, View A will be shown unless otherwise indicated.

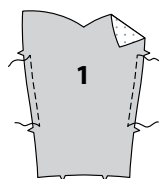
## Interfacing

**1.** Fuse **INTERFACING** to wrong side of all matching **FABRIC** and **LINING** pieces, following manufacturer's instructions.

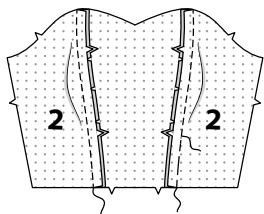


## Bodice Front and Back

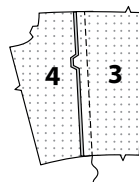
**2.** **STAYSTITCH** side edges of **BODICE FRONT** (1) between notches.



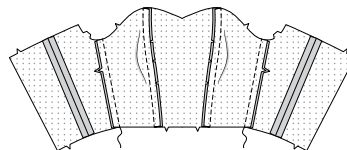
**3.** With right sides together, pin **BODICE SIDE FRONT** (2) to front, matching notches, clipping to stay-stitching if necessary. Baste. Stitch. Press seam toward center front.



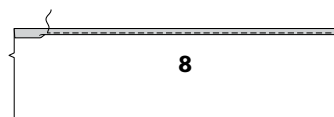
**4.** With right sides together, stitch **BODICE BACK** (3) to **BODICE SIDE BACK** (4).



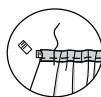
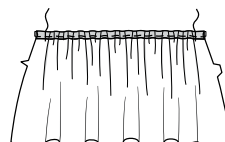
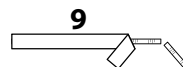
**5.** With right sides together, stitch bodice front to back at side seams.



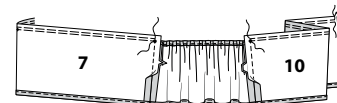
**6.** Press under 3/4" (2cm) on upper edge of **ARMHOLE RUFFLE** (8) to inside. Press under 1/4" (6mm) on raw edge. Stitch close to inner pressed edge, leaving ends open.



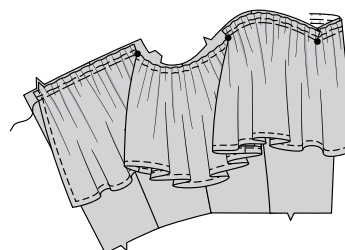
**7.** Cut a piece of elastic the measurement of **GUIDE FOR ELASTIC** (9). Using a safety pin, insert one end of elastic into opening in casing, having raw edges even. Stitch across end of elastic. Pull out ends of elastic and trim close to stitching.



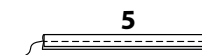
**8.** With right sides together, stitch **FRONT RUFFLE** (7) and **BACK RUFFLE** (10) to each side of arm ruffle matching notches and small dots.  
**GATHER** upper edge of ruffle front between small dots.  
**GATHER** upper edge of ruffle back between small dot and notch.  
**NARROW HEM** lower and back edges of ruffle.



**9.** On outside, pin wrong side of ruffle to right side of bodice, matching small dots and notches. Adjust gathers. Baste.



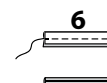
**NOTE:** Transfer large dots to ruffle if using optional straps.  
**10. Optional Straps:** With right sides together, fold **SHOULDER STRAP** (5) in half lengthwise; press. Stitch in a 3/8" (1cm) seam. Trim.



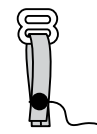
**11.** Turn strap right side out. Press. Pressing seam to underside.



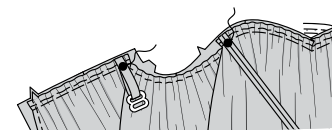
**12.** Fold **LOOP** (6) in half lengthwise, with right sides together. Stitch long edge in a 3/8" (1cm) seam. Turn loop right side out. Press. Pressing seam to underside.



**13.** Slip one end of each loop through one slider, bringing ends with large dots together; baste.

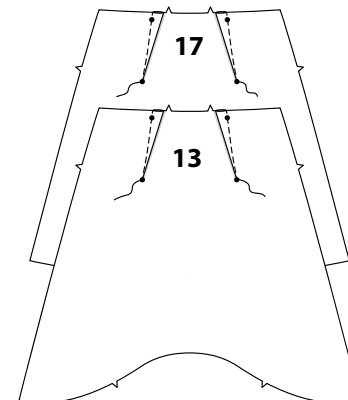


**14.** On outside, pin on end of strap to front matching large dots. Baste. Pin loop to back matching large dots. Baste.

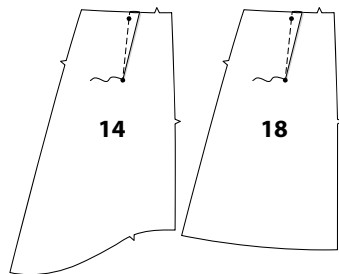


## Skirt Front and Back

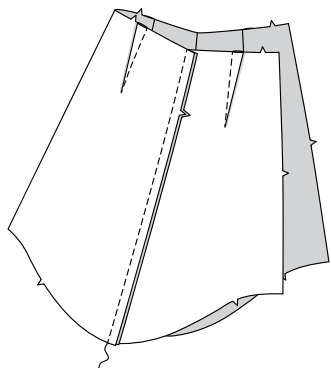
**15.** Stitch darts in **SKIRT FRONT** (13 OR 17). Press toward center.



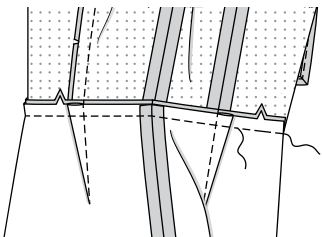
**16.** Stitch darts in SKIRT BACK (14 OR 18). Press toward center.



**17.** With right sides together, stitch skirt front to back at side seams.



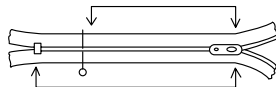
**18.** With right sides together, pin skirt to lower edge of bodice, matching seams and notches. Baste. Stitch, press seam up.



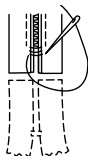
### Invisible Zipper

**NOTE:** Stitch invisible zipper using an adjustable zipper foot.

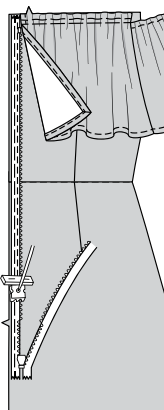
**19.** It may be necessary to adjust the length of your zipper. Measure the opening of garment from notch to seam line at upper edge, less 1/4" (6mm). Close the zipper and measure from the tab down along the teeth to the length needed. Mark new length.



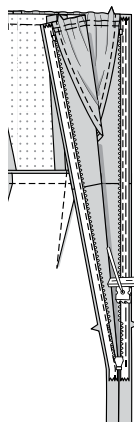
**20.** With matching buttonhole twist or heavy duty thread, make several overcast stitches across zipper teeth at marking. Trim away lower end of zipper tape to within 5/8" (1.5cm) of overcast stitches.



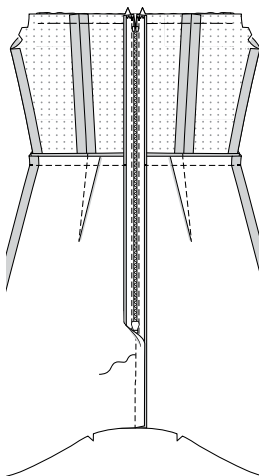
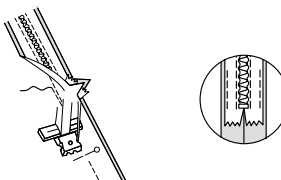
**21.** Open the zipper and press the tape flat. Keep the free upper edges of back ruffle out of the way. On OUTSIDE, pin RIGHT side of the zipper face down on the RIGHT side of the zipper opening. Have the coil along the seam line, the tape within the seam allowance and the top stop 3/4" (2cm) below upper edge, as shown. Hand-baste along center of tape. Position zipper foot over coil. Stitch along tape to notch. Back-stitch to reinforce.



**22.** Pin the remaining half of the zipper to the LEFT side of the zipper opening in same manner. Hand-baste along the center of tape. Position zipper foot at the top of the zipper with LEFT groove over the coil. Stitch along tape to the notch. Back-stitch to reinforce.

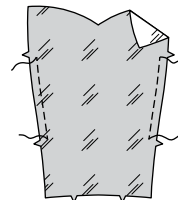


**23.** Close zipper and check that it is invisible from the OUTSIDE. Pull the free ends of the zipper tape away from the seam allowance. Pin remaining center back seam together below zipper. Position zipper foot all the way to the LEFT so the needle goes down through the outer notch of the foot. Start stitching seam 1/4" (6mm) above the lowest stitch and slightly to the LEFT. Stitch remainder of seam connecting to previous stitching. If you prefer, open out each seam allowance at end of zipper and stitch tape to seam allowance.

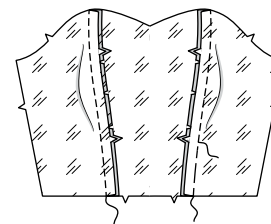


### Bodice Lining and Facing

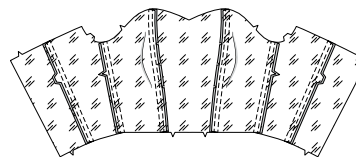
**24.** STAYSTITCH side edges of bodice front LINING section, between notches.



**25.** With right sides together, pin bodice side front LINING to front, matching notches clipping to stay-stitching if necessary. Baste. Stitch. Press seam toward center front.



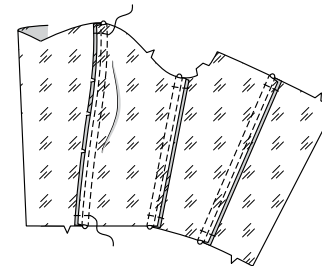
**26.** Stitch seams in bodice back and bodice side back LINING sections, same as for bodice, pressing seams toward center back. Stitch front to back at side seams. Press seams toward back. To form casings for boning, stitch seams of lining 3/8" (1cm) away from first stitching, within seam allowance, through all thicknesses.



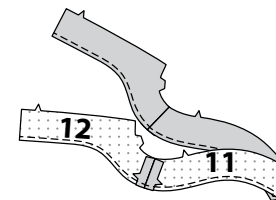
**27.** Cut six strips of light weight boning each the length of stitched casing, excluding upper and lower seam allowances. Remove boning from casing. Trim 1/4" (6mm) of boning from each end, curving ends, as shown.



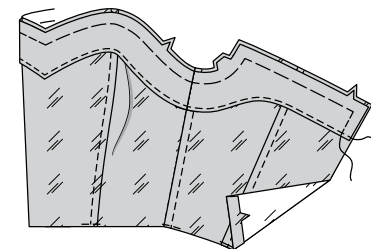
**28.** Insert boning between each seam allowance. Baste 5/8" (1.5cm) from upper and lower edges of casing, being careful not to catch in boning.



**29.** With right sides together, stitch FRONT FACING (11) to BACK FACING (12) together at sides. **FINISH** lower edge of facing.

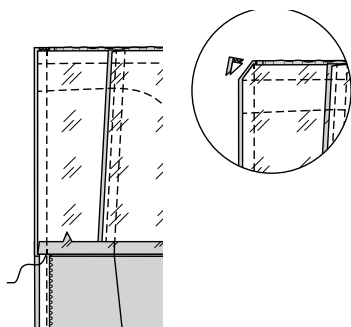
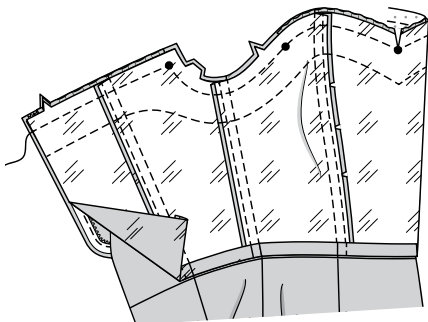


**30.** On outside, pin facing to upper edge of lining, having raw edges even, matching markings. Baste raw edges together. **EDGE STITCH** OR **SLIPSTITCH** lower edge of facing to lining. Press under 1/2" (1.3cm) on lower edge of lining.





**31.** Open out back opening edges of dress, rolling the zipper teeth away from the opening edge. With RIGHT sides together, pin back and neck edges of dress and lining together. Stitch neck edge. Trim neck seam, and to large dot at center front. Stitch across lining 1/2" (1.3cm) from back edges, keeping zipper teeth free. Trim corner. Do not trim center back edges.

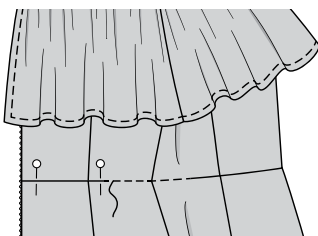
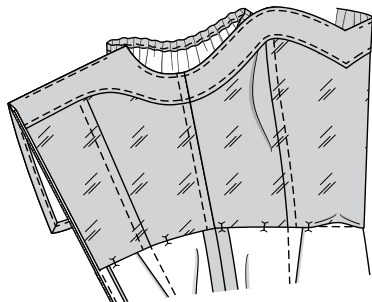


**32. UNDERSTITCH** facing as far as possible.



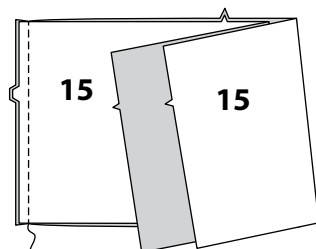
**33.** Turn lining and back edges to inside, rolling zipper teeth back in place; press. On inside, pin pressed edge of lining over seam, placing pins on outside. (Finished edge of lining extends below seam.) On outside, stitch in the ditch or groove of seam, between zipper, catching in finished edge of lining on inside.

**TIP-** To conceal the stitches in the ditch or groove of seam, try using a zipper foot, spreading the skirt and bodice away from the seam with your fingers.

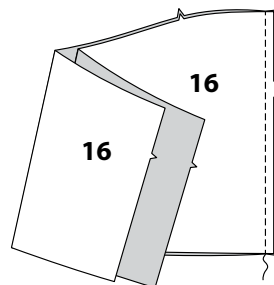


#### Finishing

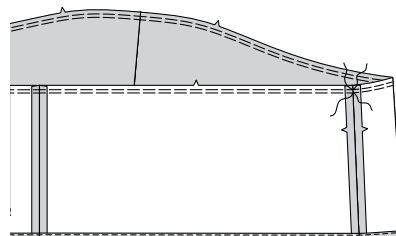
**34. RUFFLE A-** With right sides together, stitch center front seam of FRONT LOWER RUFFLE (15) sections.



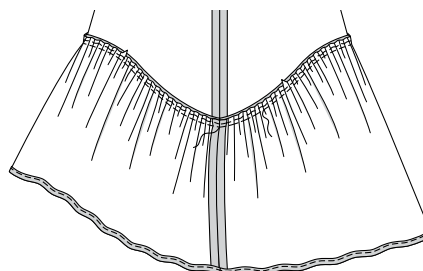
**35.** Stitch center back seam of BACK LOWER RUFFLE (16).



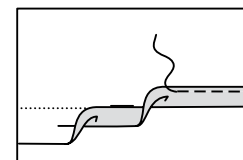
**36. GATHER** upper edge of ruffle, breaking stitching at seam allowances.  
**NARROW HEM** lower edge of ruffle.



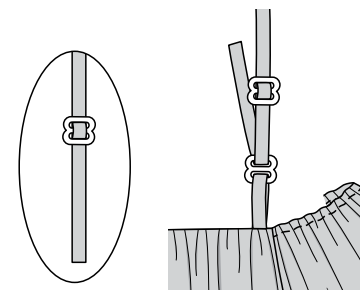
**37.** With right sides together, pin ruffle to lower edge of skirt, matching side seams and notches. Adjust gathers. Baste. Stitch. Press seam up.



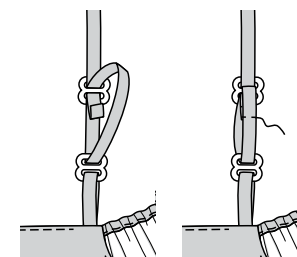
**38. HEM B- NARROW HEM** lower edge of skirt.



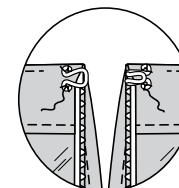
**39. OPTIONAL STRAP:** Slip each shoulder strap through both ends of each remaining slider section. Slip end through remaining loop slider. Bring end back and slip end through slider again, as shown.



**40.** Fold back 5/8" (1.5cm) on end, turning under raw edge. Stitch close to edge, keeping upper edge free, as shown.



**41. OPTIONAL:** Sew hook and eye at center back above zipper stop, as shown.





# Congrats!

You've completed your sewing adventure

---

## SHARE YOUR LOOK



Post your pattern and tag us  
**@simplicity\_creative\_group** and **#knowMepatterns**  
for a chance to be featured on our social media.

Look for more PDF patterns at **simplicity.com**

Have a question or need help with your sewing project call us at  
1-800-782-0323



KnowMe ©2023 a division of IG Design Group Americas Inc. • Atlanta, GA 30342 USA [www.thedesigngroup.com](http://www.thedesigngroup.com) • All Rights Reserved. [www.mccall.com](http://www.mccall.com) • Made in the U.S.A. Fabriqué aux États-Unis.  
To be used for individual private home use only and not for commercial or manufacturing purposes. • A usage privé seulement et non à des fins commerciales ou de production en série. • Para uso privado solamente, no se puede utilizar con propósitos de comercialización o de producción en serie.