



GWEN HENG

knowME
BY mmmg

ME2066




Scan QR code for a Sew-Along video tutorial.



@gwenstella.made

 Designed and printed in USA

Average

MISSES' DRESS

Suggested Fabrics: Chambray, Cotton Blends, Denim, Linen Blends, Stretch Wovens, Twill.

Interfacing: Lightweight Fusible.

Notions: 18" (45cm) exposed zipper (adjust to fit), one prong buckle with a 2" (5cm) opening, five ¼" (6mm) eyelets.

Sizes	6	8	10	12	14	16	18	20	22	24
European	32	34	36	38	40	42	44	46	48	50

BODY MEASUREMENTS: Select pattern size based on body measurements

Bust	30½	31½	32½	34	36	38	40	42	44	46	Ins.
Waist	23	24	25	26½	28	30	32	34	37	39	"
Hip-9" below waist	32½	33½	34½	36	38	40	42	44	46	48	"
Back-neck to waist	15½	15¾	16	16¼	16½	16¾	17	17¼	17½	17¾	"

Dress	45**	2½	2½	2½	2½	2½	2½	2½	2½	2½	Yds.
	60**	1½	1½	1½	1½	1½	1½	1½	1½	1½	2 "
Contrast (Bodice Side Front and Back, Yoke Front, Skirt Side Front and Back, Front and Back Neck Facing, Carriers, Sleeves, Belt)											
	45**	1½	1½	1½	1½	1½	1½	1½	1½	1½	Yds.
	60**	1½	1½	1½	1½	1½	1½	1½	1½	1½	"

Interfacing 20" - 3½ yd.

FINISHED GARMENT MEASUREMENTS (Includes Design and Wearing Ease)

Bust	34	35	36	37½	39½	41½	43½	45½	47½	49½	Ins.
Waist	25	26	27	28½	30½	32½	34½	36½	38½	40½	"
Hip	36	37	38	39½	41½	43½	45½	47½	49½	51½	"
Finished back length from base of neck											
Dress	33½	33¾	34	34¼	34½	34¾	35	35¼	35½	35¾	Ins.

*with nap **without nap

Moins Facile

ROBE POUR JEUNES FEMMES

Tissus Conseillés: Chambray, Cottonnades, Denim, Toiles de lin mélangés, Tissus tissés extensibles, Twill. **Entoilage:** Thermocollant léger.

Mercerie: Fermeture à glissière exposée de 45cm (adaptez pour ajuster), 1 boucle ardillon de ceinture avec ouverture de 5cm, 5 œillets de 6mm.

Tailles	6	8	10	12	14	16	18	20	22	24
Françaises	34	36	38	40	42	44	46	48	50	52
Européen	32	34	36	38	40	42	44	46	48	50

MESURES DU CORPS: Choisissez la taille du patron basée sur les mesures du corps

Poitrine	78	80	83	87	92	97	102	107	112	117	cm
Taille	58	61	64	67	71	76	81	87	94	99	"
Hanches (23cm au-dessous de la taille)	83	85	88	92	97	102	107	112	117	122	cm

Dos du cou à la taille 39.5 40 40.5 41.5 42 42.5 43 44 44.5 45 "

Robe	115cm*	2.2	2.2	2.2	2.2	2.3	2.3	2.3	2.3	2.4	m
	150cm*	1.7	1.7	1.7	1.7	1.7	1.7	1.7	1.7	1.8	"
Contraste (Découpes devant et dos du corsage, Empiècement devant, Découpes Devant et Dos de la Jupe, Parementures d'encolure devant et dos, Passants, Manches, Ceinture)											
	115cm*	1.0	1.0	1.0	1.0	1.1	1.4	1.4	1.4	1.5	m
	150cm*	1.0	1.0	1.0	1.0	1.1	1.3	1.3	1.4	1.4	"

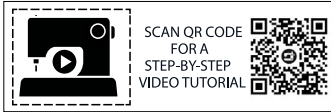
Entoilage 51cm - 2.9m

MESURES DES VÊTEMENTS FINI (Motif et aisance de port compris)

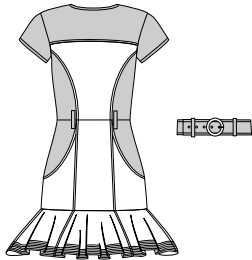
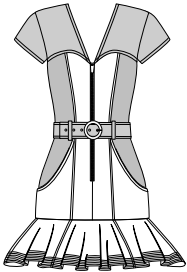
Poitrine	86	89	91	95	100	105	110	116	121	126	cm
Taille	64	66	69	72	77	83	88	93	98	103	"
Hanches	91	94	97	100	105	110	116	121	126	131	"
Longueur finie – dos, votre nuque à l'ourlet											
Robe	85	86	86	87	88	88	89	90	90	91	cm

*avec sens **sans sens

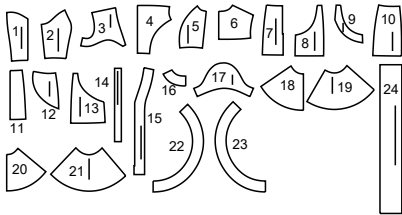




@gwenstella.made



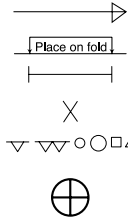
24 PATTERN PIECES



1 Bodice Front
2 Bodice Side Front
3 Yoke Front
4 Bodice Back
5 Bodice Side Back
6 Yoke Back
7 Skirt Front
8 Pocket
9 Pocket Facing
10 Skirt Side Front
11 Skirt Back
12 Skirt Side Back

13 Skirt Lower Side Back
14 Carriers
15 Front Facing
16 Back Neck Facing
17 Sleeve
18 Front Flounce
19 Side Front Flounce
20 Back Flounce
21 Side Back Flounce
22 Front Facing
23 Back Facing
24 Belt

PATTERN MARKINGS



GRAINLINE: Place on straight grain of fabric, parallel to selvage or fold.

FOLDLINE: Place line on fold of fabric.

BUTTONHOLE MARKING: Indicates exact length and placement of buttonholes.

BUTTON MARKING: Indicates button placement.

NOTCHES AND SYMBOLS: For matching seams and construction details.

Indicates the Bustline, Waistline, Hip and/or Biceps. Measurements refer to circumference of Finished Garment (Body Measurement + Wearing Ease + Design Ease). Adjust pattern if necessary. The measurement excludes pleats, tucks, darts and seam allowances.

SEAM ALLOWANCE: 5/8" (1.5cm) included unless otherwise indicated, but not printed on tissue.

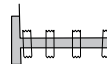
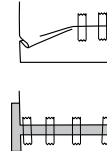
ADJUST IF NECESSARY

Lengthen or Shorten at adjustment lines (==) or where indicated on pattern. If substantial length is added, you may need to purchase additional fabric.

TO SHORTEN: Crease along adjustment line. Make a fold half the amount needed. Tape in place.

TO LENGTHEN: Slash between adjustment lines. Spread amount as needed, keeping edges parallel. Tape over paper.

When Alteration lines are not on tissue, lengthen or shorten at lower edge.



CUTTING AND MARKING

SHRINK FABRIC if not labeled pre-shrunk. Press.

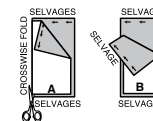
CIRCLE LAYOUT for View, Size, Fabric Width.

Use **WITH NAP** layout for fabrics with one-way designs, nap, pile or surface shading. Because most knits have surface shading, a with nap layout is used.

For **DOUBLE THICKNESS (WITH FOLD)** - fold fabric with right sides together.

*** DOUBLE THICKNESS (WITHOUT FOLD)** - For fabrics with nap, fold fabric crosswise, right sides together. Mark as shown. Cut along crosswise fold of fabric (A). Turn upper layer 180° so arrows go in same direction and place over lower layer, right sides together (B).

For **SINGLE THICKNESS** - place fabric right side up. (For Fur Pile fabrics, place pile side down.)



★ Cut other pieces first, allowing enough fabric to cut this piece. Open fabric. For "Cut 1" pieces, cut piece once on single layer of fabric with piece face up on right side of fabric.

Pattern may have cutting lines for several sizes. Select the proper cutting line or pattern pieces for your size.

Before **CUTTING** place all pieces on fabric according to layout. Pin. (**Layouts show approximate position of pattern pieces; position may vary according to your pattern size.**) Cut **ACCURATELY**, cutting notches outward.

Before removing pattern, **TRANSFER MARKINGS** and lines of construction to Wrong Side of fabric, using the Pin and Chalk Pencil method or Tracing Paper and Dressmaker Wheel. Markings needed on right side of fabric should be thread traced.

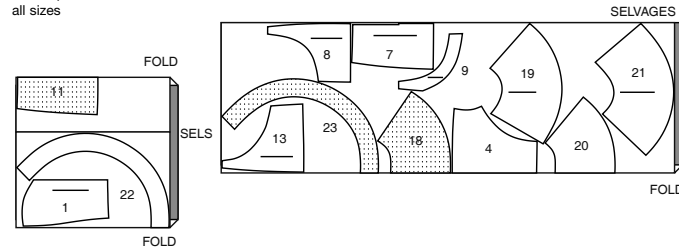
NOTE: Broken-line boxes (a1 b1 c1) in layouts represent pieces cut by measurements provided.

CUTTING LAYOUTS

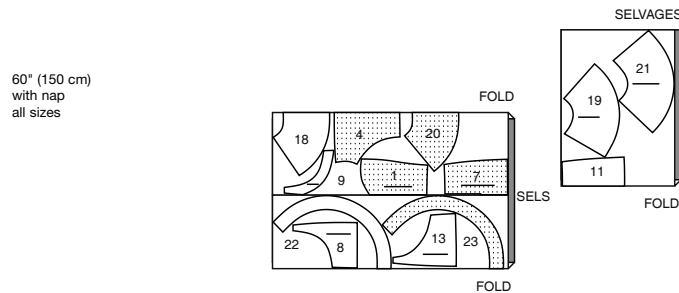
DRESS

use pieces: 1 4 7 8 9 11 13 18 19 20 21 22 23

45" (115 cm)
with nap
all sizes

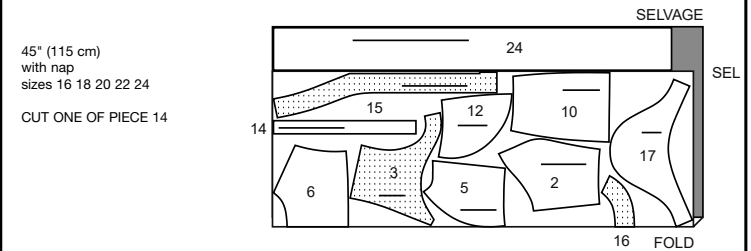


60" (150 cm)
with nap
all sizes

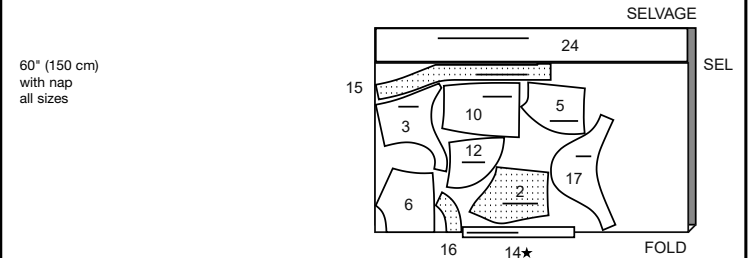


45" (115 cm)
with nap
sizes 16 18 20 22 24

CUT ONE OF PIECE 14



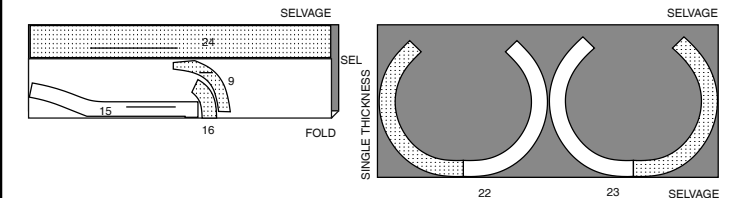
60" (150 cm)
with nap
all sizes



INTERFACING (Pocket Facing, Front and Back Facing, Front and Back Neck Facing)

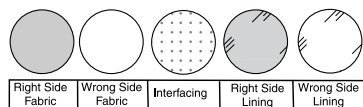
use pieces: 9 15 16 22 23 24

25" (64 cm)
all sizes



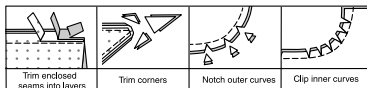
SEWING INFORMATION

FABRIC KEY



SEAM ALLOWANCES

Use 5/8" (1.5cm) seam allowances unless otherwise indicated.



PIN AND FIT

Pin or baste seams, **RIGHT SIDE TOGETHER**, matching notches. Fit garment before stitching major seams.

PRESS

Press seam allowances flat; then open unless otherwise stated. Clip where necessary so they lie flat.

GLOSSARY

Sewing terms appearing in **BOLD TYPE** in Sewing Instructions are explained below.

EASE/GATHER – Loosen needle tension slightly. With **RIGHT** side up, stitch 5/8" (1.5cm) from cut edge using a long stitch. Stitch again 1/4" (6mm) from the first stitching within the seam allowance.

EDGE FINISH – Stitch 1/4" (6mm) from edge, turn under edge along stitching and stitch or zig-zag, or overlock/serge raw edges.

NARROW HEM – Press under hem allowance as indicated on tissue pattern. To form narrow hem, tuck under raw edge to meet crease. Press. Stitch hem in place.

STAY-STITCH – Stitch 1/2" (1.3cm) from cut edge in direction of arrows. This stitching stays in permanently to prevent stretching on curved edges. (Shown only in the first illustration.)

TOPSTITCH – On outside, stitch 1/4" (6mm) from edge, seam or previous stitching, using presser foot as guide, or stitch where indicated in instructions.

UNDERSTITCH – Press facing and seam away from garment, stitching through facing and seam allowances close to seam.



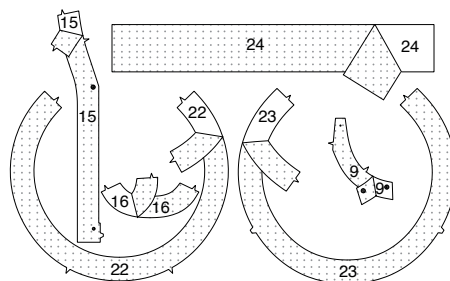
@gwenstella.made

SEWING DIRECTIONS

DRESS

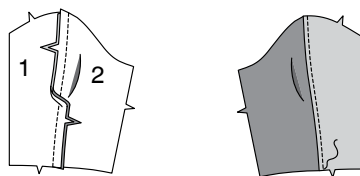
INTERFACING

- 1.** Pin interfacing to wrong side of **FRONT FACING** (15) and **BACK NECK FACING** (16), **FRONT FACING** (22), **BACK FACING** (23), and **BELT** (24). Fuse interfacing in place following manufacturer's directions.

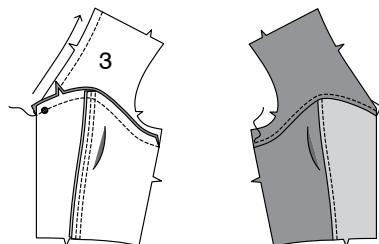


BODICE

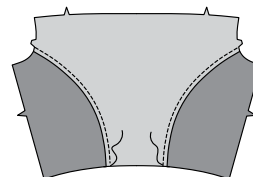
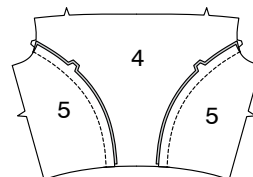
- 2.** With right sides together and raw edges even, pin **BODICE FRONT** (1) to **BODICE SIDE FRONT** (2) at side front edges, matching notches. Stitch. Press seam toward bodice front. On outside, **TOPSTITCH** bodice front along seamline.



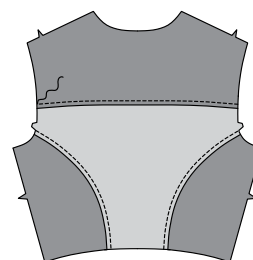
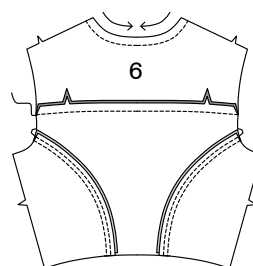
- 3.** **STAYSTITCH** neck edge of **YOKE FRONT** (3). Pin upper edge of bodice to lower edge of yoke front with right sides together, matching large dots and notches. Stitch. Press seam toward yoke. On outside, **TOPSTITCH** yoke along seamline.



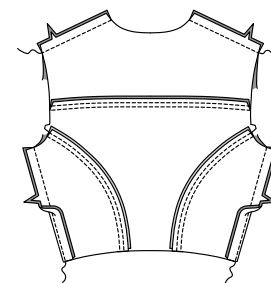
- 4.** With right sides together and raw edges even, pin **BODICE BACK** (4) to **BODICE SIDE BACK** (5) at side back edges, matching notches. Stitch. Press seam toward bodice back. On outside, **TOPSTITCH** bodice back along seamlines.



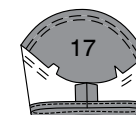
- 5.** **STAYSTITCH** neck edge of **YOKE BACK** (6). Pin upper edge of bodice to lower edge of yoke back with right sides together, matching centers and notches. Stitch. Press seam toward yoke. On outside, **TOPSTITCH** yoke along seamline.



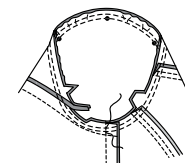
- 6.** Stitch bodice front to bodice back at shoulder edges and side edges. Press side seam toward back.



- 7.** **EASE** top of **SLEEVE** (17) between notches. Stitch underarm seam. **NARROW HEM.**

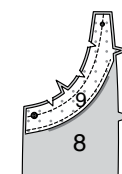


- 8.** Turn sleeve right side out. Hold bodice wrong side out with armhole toward you. With right sides together, pin sleeve to armhole edge with center small dot at shoulder seam, matching underarm seams, notches and remaining small dots. Pull up ease stitches to fit. To distribute fullness evenly, slide fabric along bobbin threads until there are no puckers or tucks on the seam line. Baste. Stitch. Stitch again 1/8" (3mm) from first stitching. Trim seam below notches close to stitching. Press only the seam allowance, shrinking out fullness.

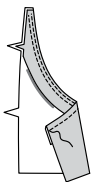


SKIRT

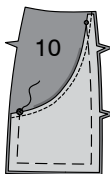
- 9.** **EDGE FINISH** unnotched edge of **POCKET FACING** (9). With right sides together and raw edges even, pin facing to **POCKET** (8), matching small dots, large dots, and notches. Stitch upper curved edge. Trim seam; clip curves.



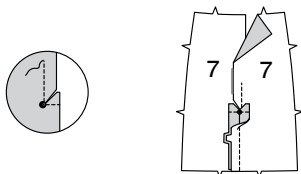
10. UNDERSTITCH the facing. Turn facing to inside; press. On outside, **TOPSTITCH** finished edge.



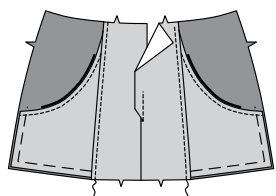
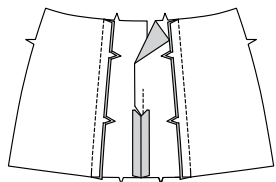
11. On outside, pin pocket to SKIRT SIDE FRONT (10), matching small dots, large dots, and notches. Baste raw edges together.



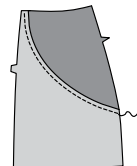
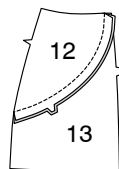
12. To reinforce inner corner of SKIRT FRONT (7), stitch along stitching lines. Clip to stitching at small dot. Stitch skirt front edges together at center. Press seam open.



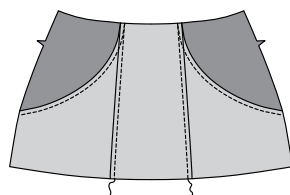
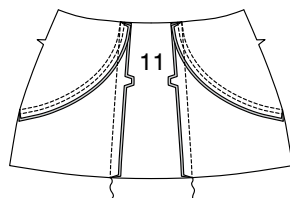
13. Pin skirt side front to skirt front at side front edges, matching notches. Stitch. Press seam toward front. On outside, **TOPSTITCH** front along seamline.



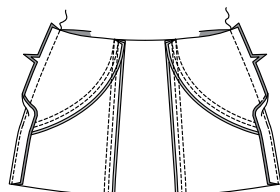
14. With right sides together and raw edges even, pin SKIRT SIDE BACK (12) to SKIRT LOWER SIDE BACK (13), matching notches. Stitch. Press seam toward lower side back. On outside, **TOPSTITCH** lower side back along seamline.



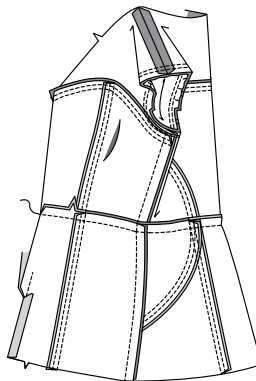
15. Pin lower side back to SKIRT BACK (11), matching notches. Stitch. Press seam toward center. On outside, **TOPSTITCH** back along seamlines.



16. Stitch skirt front to skirt back at side edges. Press seam toward back.

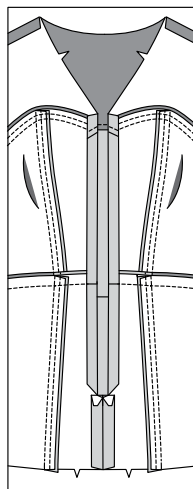


17. With right sides together and raw edges even, pin lower edge of bodice to upper edge of skirt, matching seams and notches. Stitch. Press seam toward bodice.

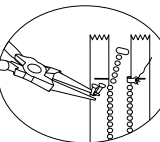
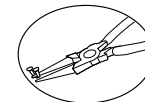
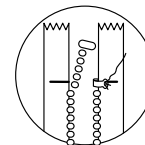
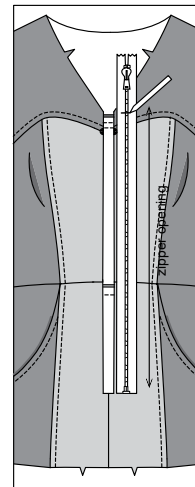


ZIPPER AND NECK FACING

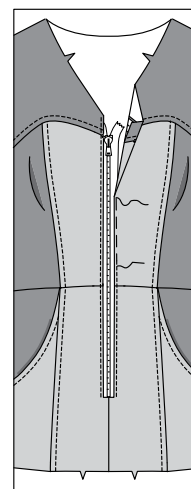
18. Press under 5/8" (1.5cm) seam allowance on front and lower front opening edges along stitching line.



19. To adjust the length of the zipper, measure right front opening edge from just above the stitching line to the large dot. Mark the desired length on the zipper tape, measuring from the lower edge of the bottom stop. Cut off extra zipper 7/8" (2.2cm) above mark, making sure that the zipper pull is well below where you are going to cut. Do not discard the pieces. Using pliers, remove the teeth above your shortening mark and pry the top-stops open and remove them from the discarded pieces of zipper. Reinstall top stops by crimping them in place immediately above the last remaining tooth.



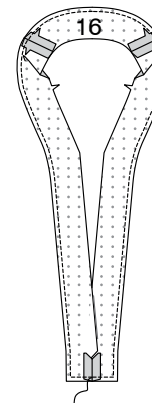
20. Pin closed zipper under opening edges with bottom stop just above lower pressed edge, and upper edges tapered toward the seam allowance at the large dot. Baste. Stitch close to front opening edges, using an adjustable zipper foot.



21. To reinforce inner corner of FRONT FACING (15), stitch along stitching lines. Clip to stitching at small dot. Stitch front facing edges together at center. Press seam open.



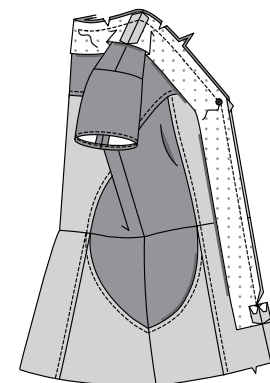
22. Stitch front facing to BACK NECK FACING (16) at shoulder edges. **EDGE FINISH** unmarked edge.



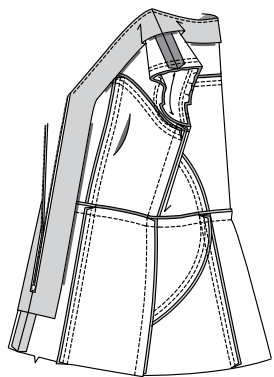
23. Open zipper. Working on one half of garment at a time, open out front opening edges of right front, having zipper teeth away from opening edge.

With right sides together and raw edges even, pin facing to bodice at neck and front edge, matching centers, seams, notches, and large dots. Stitch neck edge along seam line from center back to front. Stitch front edge in a 1/2" (1.3cm) seam. Trim seam; clip curves.

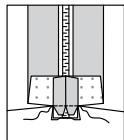
Stitch facing to left neck edge of garment in the same manner.



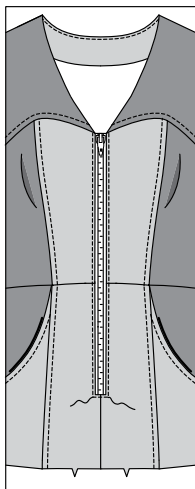
24. UNDERSTITCH neck edge between the large dots. Turn facing to inside; press.



25. On inside, fold under lower edge of dress, along lower stitching line. Fold up facing, bringing clipped lower edges together. Stitch across lower stitching line through all thicknesses.

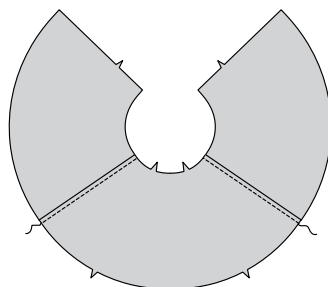
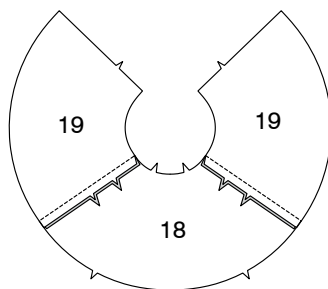


26. Turn dress; press. On outside, edge stitch lower edge of zipper, connecting to previous stitching.

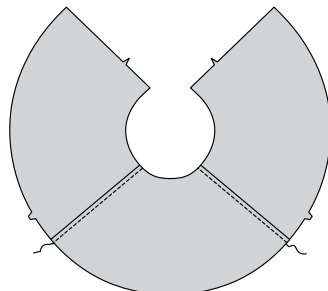
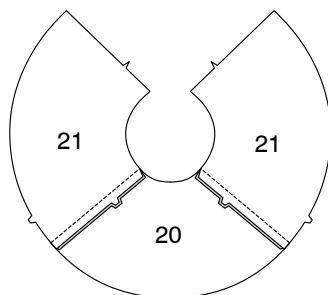


FLOUNCE

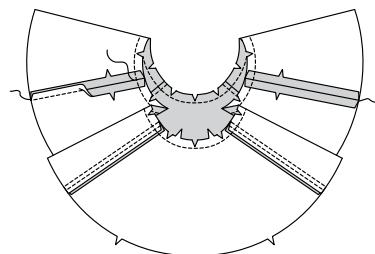
27. With right sides together and raw edges even, pin SIDE FRONT FLOUNCE (19) sections to FRONT FLOUNCE (18), matching notches. Stitch. Press seams toward front. On outside, **TOPSTITCH** front along seamlines.



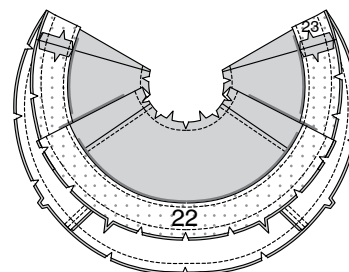
28. With right sides together and raw edges even, pin SIDE BACK FLOUNCE (21) sections to BACK FLOUNCE (20), matching notches. Stitch. Press seams toward back. On outside, **TOPSTITCH** front along seamlines.



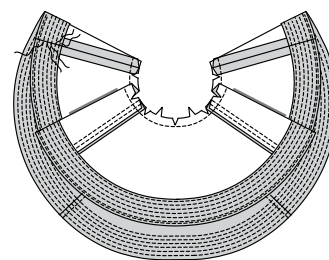
29. Stitch flounce front to flounce back at side edges. Press open. Stitch along seam line on upper edge of flounce. Clip to stitching.



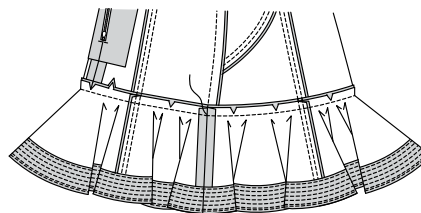
30. Stitch FRONT FACING (22) to BACK FACING (23) at side edges. Press open. **EDGE FINISH** unnotched edge. With right sides together and raw edges even, pin facing to lower edge of flounce, matching notches. Stitch. Trim seam; clip curves.



31. UNDERSTITCH the facing. Turn facing to inside; press. On outside, **TOPSTITCH** finished edge. Stitch five additional rows of topstitching along lower edge starting 1/4" (6mm) from first stitching.

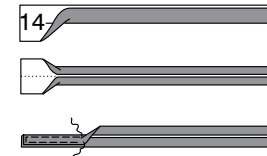


32. With right sides together, and raw edges even, pin flounce to lower edge of dress, matching centers, seams, and notches. Stitch. Trim seam. Press seam toward dress, pressing out the flounce.

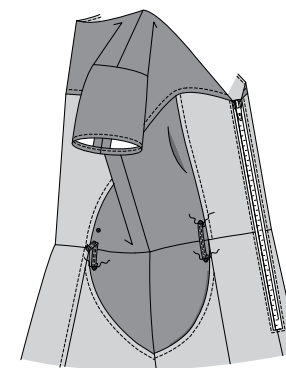


CARRIERS AND BELT

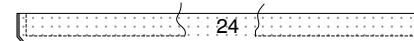
33. Fold CARRIERS (14) in half, lengthwise with wrong sides together. Press, setting in a crease. Open out long edges of carrier and turn them to wrong side so that they meet at the crease. Press. Fold carrier in half lengthwise, bringing pressed edges together. Stitch close to both long edges.



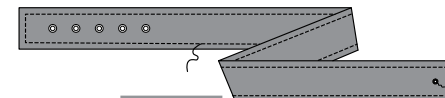
34. Cut carrier into four pieces 3-3/4" (9.5cm) long. Press under 3/4" (2cm) on each end of carrier. Trim to 1/4" (6mm). On outside, pin carriers to dress, placing ends over small dots, as shown. Edgestitch ends in place, securely.



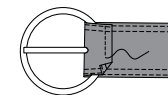
35. Fold BELT (24) in half, lengthwise with wrong sides together. Stitch, leaving an opening in long edge for turning. Trim seam; clip corners.



36. Turn belt; press. Slipstitch opening closed. **TOPSTITCH** close to finished edges. Using an awl, make a hole at inner small dot for buckle prong. Finish, with overcast stitch, as shown. Apply grommets to five outer small dots, following manufacturer's directions.



37. Slip end of belt through buckle. Turn end of belt to underside along fold line. Stitch 1/4" (6mm) from finished end through all thicknesses, securely.





Congrats!

You've completed your sewing adventure

SHARE YOUR LOOK



Post your pattern and tag us
@simplicity_creative_group and **#knowMepatterns**
for a chance to be featured on our social media.

Look for more PDF patterns at **simplicity.com**

Have a question or need help with your sewing project call us at
1-800-782-0323



KnowMe ©2023 a division of IG Design Group Americas Inc. • Atlanta, GA 30342 USA www.thedesigngroup.com • All Rights Reserved. www.mccall.com • Made in the U.S.A. Fabriqué aux États-Unis.
To be used for individual private home use only and not for commercial or manufacturing purposes. • A usage privé seulement et non à des fins commerciales ou de production en série. • Para uso privado solamente, no se puede utilizar con propósitos de comercialización o de producción en serie.