



ERICA BUNKER
knowME
BY MIMI G



A
B



A
B

Scan QR code for a Sew-Along video tutorial.



@ericabunker



Designed and printed in USA

ME2065

Average

MISSES' BLAZER AND PANTS

Suggested Fabrics: Cotton Blends, Crepe, Dupioni, Gabardine, Lightweight Wool Blends, Linen Blends, Sateen, Stretch Wovens, Twill. **Lining:** Cotton Blends, Polyester Blends. **Interfacing:** Lightweight Fusible.

Notions: A: One $\frac{3}{4}$ " (2cm) button, pair of shoulder pads, six $\frac{5}{8}$ " (1.5cm) buttons. B: One 7" (18cm) invisible zipper, polyester fleece scraps.

Sizes	6	8	10	12	14	16	18	20	22	24
European	32	34	36	38	40	42	44	46	48	50

BODY MEASUREMENTS: Select pattern size based on body measurements

Bust	30½	31½	32½	34	36	38	40	42	44	46	Ins.
Waist	23	24	25	26½	28	30	32	34	37	39	"
Hip-9" below waist	32½	33½	34½	36	38	40	42	44	46	48	"
Back-neck to waist	15½	15¾	16	16¼	16½	16¾	17	17¼	17½	17¾	"

Blazer A	45**	2¼	2¾	2¾	2¾	2¾	2¾	2¾	2¾	2¾	Yds.
	60**	1¾	1¾	1¾	1¾	1¾	2	2	2	2	"
Lining	45**	1¾	1¾	1¾	1¾	1¾	2	2	2	2	"
Interfacing	20"	¾	¾	¾	¾	¾	¾	¾	¾	¾	"
Pants B	45**	2¾	2¾	2¾	2¾	2¾	2¾	2¾	3	3	Yds.
	60**	1¾	1¾	1¾	1¾	2	2¾	2¾	2¾	2¾	"
Interfacing	20"	¾	¾	¾	¾	¾	¾	¾	¾	¾	"

FINISHED GARMENT MEASUREMENTS (Includes Design and Wearing Ease)

A Waist	26½	27½	28½	30	32	34	36	38	40	42	Ins.
B Waist	24½	25½	26½	28	30	32	34	36	38	40	"
B Hip	33½	34½	35½	37	39	41	43	45	47	49	"

Width, lower edge

Blazer A	40	41	42	43½	45½	47½	49½	51½	53½	55½	Ins.
----------	----	----	----	-----	-----	-----	-----	-----	-----	-----	------

Finished back length from base of neck

Blazer A	27½	27¾	28	28½	28¾	29	29¼	29½	29¾	Ins.
----------	-----	-----	----	-----	-----	----	-----	-----	-----	------

Finished side length from waist

Pants B	41½	41¾	42	42¼	42½	42¾	43	43¼	43½	43¾	Ins.
---------	-----	-----	----	-----	-----	-----	----	-----	-----	-----	------

*with nap **without nap

Moins Facile

BLAZER ET PANTALON POUR JEUNES FEMMES

Tissus Conseillés: Cotonnades, Crêpe, Dupioni, Gabardine, Lainages légers, Lin mélangés, Satin de coton, Tissus tissés extensibles, Twill. **Doublure:** Cotonnades, Mélanges de polyester. **Entoilage:** Thermocollant léger.

Mercerie: A: 1 bouton de 2cm, paire d'épaulettes, 6 boutons de 1.5cm. B: 1 fermeture à glissière invisible de 18cm, morceaux de molleton de polyester.

Tailles	6	8	10	12	14	16	18	20	22	24
Françaises	34	36	38	40	42	44	46	48	50	52
Européen	32	34	36	38	40	42	44	46	48	50

MESURES DU CORPS: Choisissez la taille du patron basée sur les mesures du corps

Poitrine	78	80	83	87	92	97	102	107	112	117	cm
----------	----	----	----	----	----	----	-----	-----	-----	-----	----

Taille	58	61	64	67	71	76	81	87	94	99	"
--------	----	----	----	----	----	----	----	----	----	----	---

Hanches (23cm au-dessous de la taille)

	83	85	88	92	97	102	107	112	117	122	cm
--	----	----	----	----	----	-----	-----	-----	-----	-----	----

Dos du cou à la taille	39.5	40	40.5	41.5	42	42.5	43	44	44.5	45	"
------------------------	------	----	------	------	----	------	----	----	------	----	---

Blazer A	115cm*	2.1	2.1	2.2	2.2	2.2	2.5	2.5	2.5	2.6	m
----------	--------	-----	-----	-----	-----	-----	-----	-----	-----	-----	---

	150cm*	1.6	1.6	1.6	1.6	1.6	1.8	1.8	1.8	1.8	"
--	--------	-----	-----	-----	-----	-----	-----	-----	-----	-----	---

Doublure	115cm**	1.6	1.6	1.7	1.7	1.7	1.8	1.8	1.8	1.8	"
----------	---------	-----	-----	-----	-----	-----	-----	-----	-----	-----	---

Entoilage	51cm	3.0	3.0	3.1	3.1	3.1	3.1	3.2	3.2	3.3	"
-----------	------	-----	-----	-----	-----	-----	-----	-----	-----	-----	---

Pantalon B	115cm*	2.4	2.5	2.5	2.5	2.6	2.6	2.6	2.6	2.7	m
------------	--------	-----	-----	-----	-----	-----	-----	-----	-----	-----	---

	150cm*	1.5	1.5	1.5	1.6	1.6	1.8	1.8	2.4	2.5	"
--	--------	-----	-----	-----	-----	-----	-----	-----	-----	-----	---

Entoilage	51cm	0.5	0.6	0.6	0.6	0.6	0.6	0.6	0.7	0.7	"
-----------	------	-----	-----	-----	-----	-----	-----	-----	-----	-----	---

MESURES DES VÊTEMENTS FINI (Motif et aisance de port compris)

A Taille	67	70	72	76	81	86	91	97	102	107	cm
----------	----	----	----	----	----	----	----	----	-----	-----	----

B Taille	62	65	67	71	76	81	86	91	97	102	"
----------	----	----	----	----	----	----	----	----	----	-----	---

B Hanches	85	88	90	94	99	104	109	114	119	124	"
-----------	----	----	----	----	----	-----	-----	-----	-----	-----	---

Largeur à l'ourlet

Blazer A	102	104	107	110	116	121	126	131	136	141	cm
----------	-----	-----	-----	-----	-----	-----	-----	-----	-----	-----	----

Longueur finie – dos, votre nuque à l'ourlet

Blazer A	70	70	71	72	72	73	74	74	75	76	cm
----------	----	----	----	----	----	----	----	----	----	----	----

Longueur finie – côté, taille à l'ourlet

Pantalon B	105	106	107	107	108	109	109	110	110	111	cm
------------	-----	-----	-----	-----	-----	-----	-----	-----	-----	-----	----

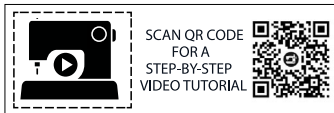
*avec sens **sans sens



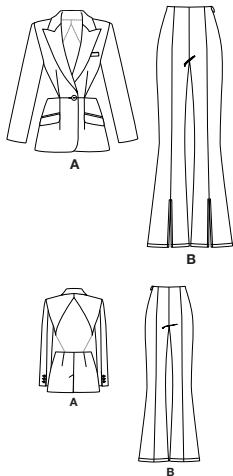
A



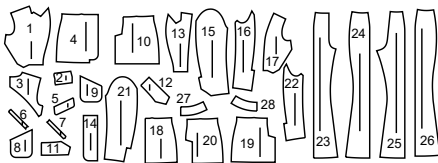
B



@ericabunker



28 PATTERN PIECES



- 1 Bodice Front-A
- 2 Welt-A
- 3 Bodice Back-A
- 4 Lower Front-A
- 5 Flap-A
- 6 Upper Welt-A
- 7 Lower Welt-A
- 8 Pocket-A
- 9 Pocket Lining-A
- 10 Lower Back-A
- 11 Upper Collar-A
- 12 Under Collar-A
- 13 Upper Front Facing-A
- 14 Lower Front Facing-A
- 15 Upper Sleeve-A
- 16 Under Sleeve-A
- 17 Bodice Front Lining-A
- 18 Lower Front Lining-A
- 19 Lower Right Back Lining-A
- 20 Lower Left Back Lining-A
- 21 Upper Sleeve Lining-A
- 22 Under Sleeve Lining-A
- 23 Front-B
- 24 Side Front-B
- 25 Back-B
- 26 Side Back-B
- 27 Front Facing-B
- 28 Back Facing-B

PATTERN MARKINGS

GRAINLINE: Place on straight grain of fabric, parallel to selvage or fold.

FOLDLINE: Place line on fold of fabric.

BUTTONHOLE MARKING: Indicates exact length and placement of buttonholes.

BUTTON MARKING: Indicates button placement.

NOTCHES AND SYMBOLS: For matching seams and construction details.

Indicates the Bustline, Waistline, Hip and/or Biceps. Measurements refer to circumference of Finished Garment (Body Measurement + Wearing Ease + Design Ease). Adjust pattern if necessary. The measurement excludes pleats, tucks, darts and seam allowances.

SEAM ALLOWANCE: 5/8" (1.5cm) included unless otherwise indicated, but not printed on tissue.

ADJUST IF NECESSARY

Lengthen or Shorten at adjustment lines (==) or where indicated on pattern. If substantial length is added, you may need to purchase additional fabric.

TO SHORTEN: Crease along adjustment line. Make a fold half the amount needed. Tape in place.

TO LENGTHEN: Slash between adjustment lines. Spread amount as needed, keeping edges parallel. Tape over paper.

When Alteration lines are not on tissue, lengthen or shorten at lower edge.

CUTTING AND MARKING

SHRINK FABRIC if not labeled pre-shrunk. Press.

CIRCLE LAYOUT for View, Size, Fabric Width.

Use **WITH NAP** layout for fabrics with one-way designs, nap, pile or surface shading. Because most knits have surface shading, a with nap layout is used.

For **DOUBLE THICKNESS (WITH FOLD)** - fold fabric with right sides together.

*** DOUBLE THICKNESS (WITHOUT FOLD)** - For fabrics with nap, fold fabric crosswise, right sides together. Mark as shown. Cut along crosswise fold of fabric (A). Turn upper layer 180° so arrows go in same direction and place over lower layer, right sides together (B).

For **SINGLE THICKNESS** - place fabric right side up. (For Fur Flee fabrics, place pile side down.)

★ Cut other pieces first, allowing enough fabric to cut this piece. Open fabric. For "Cut 1" pieces, cut piece once on single layer of fabric with piece face up on right side of fabric.

Pattern may have cutting lines for several sizes. Select the proper cutting line or pattern pieces for your size.

Before **CUTTING** place all pieces on fabric according to layout. Pin. (Layouts show approximate position of pattern pieces; position may vary according to your pattern size.) Cut **ACCURATELY**, cutting notches outward.

Before removing pattern, **TRANSFER MARKINGS** and lines of construction to Wrong Side of fabric, using the Pin and Chalk Pencil method or Tracing Paper and Dressmaker Wheel. Markings needed on right side of fabric should be thread traced.

NOTE: Broken-line boxes (a! b! c!) in layouts represent pieces cut by measurements provided.

CUTTING LAYOUTS

BLAZER A

use pieces: 1 2 3 4 5 6 7 8 10 11 12 13 14 15 16

45" (115 cm)
with nap
sizes 6-8-10-12-14-16

45" (115 cm)
with nap
sizes 18-20-22-24

60" (150 cm)
with nap
sizes 6-8-10-12-14-16

60" (150 cm)
with nap
sizes 18-20-22-24

INTERFACING A

use pieces: 1 2 3 4 5 6 7 11 12 13 14

20" (51 cm)
all sizes

LINING

use pieces: 3 9 17 18 19 20 21 22

45" (115 cm)
without nap
all sizes

PANTS B

use pieces: 23 24 25 26 27 28

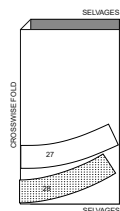
45" (115 cm)
with nap
all sizes

60" (150 cm)
with nap
sizes 6-8-10-12-14-16

60" (150 cm)
with nap
sizes 18-20-22-24

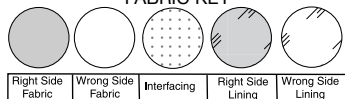
INTERFACING B

use pieces: 27 28

20" (51 cm)
all sizes

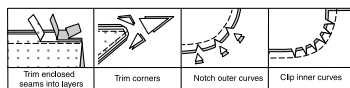
SEWING INFORMATION

FABRIC KEY



SEAM ALLOWANCES

Use 5/8" (1.5cm) seam allowances unless otherwise indicated.



PIN AND FIT

Pin or baste seams, **RIGHT SIDE TOGETHER**, matching notches. Fit garment before stitching major seams.

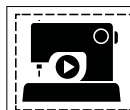
PRESS

Press seam allowances flat; then open unless otherwise stated. Clip where necessary so they lie flat.

GLOSSARY

Sewing terms appearing in **BOLD TYPE** in Sewing Instructions are explained below.**DART** - To make dart, with **RIGHT** sides together, fold the fabric through the center of the dart, bringing broken lines and small dots together. On **INSIDE**, place pins at **RIGHT** angles to the broken lines. Stitch the dart from wide end to point.**TIP** - To prevent a "bubble" at the point, make the last few stitches right on the fold and leave the thread ends long enough to tie a knot. **DO NOT** back-stitch at the point.

Press the dart flat along the stitching to "blend" the stitches, then press dart as indicated in the Sewing Directions.

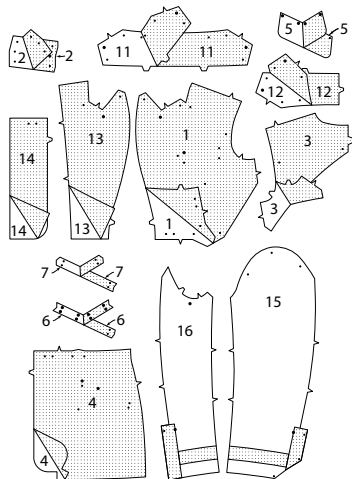
EASE - Loosen needle tension slightly. With **RIGHT** side up, stitch 5/8" (1.5cm) from cut edge using a long stitch. Stitch again 1/8" (3mm) from the first stitching within the seam allowance.**EDGE FINISH** - Stitch 1/4" (6mm) from edge, turn under edge along stitching and stitch or zig-zag, or overlock/serge raw edges.**NARROW HEM** - Press under hem allowance as indicated on tissue pattern. To form narrow hem, tuck under raw edge to meet crease. Press. Stitch hem in place.**STAY-STITCH** - Stitch 1/2" (1.3cm) from cut edge in direction of arrows. This stitching stays in permanently to prevent stretching on curved edges. (Shown only in the first illustration.)**UNDERSTITCH** - Press facing and seam away from garment, stitching through facing and seam allowances close to seam.SCAN QR CODE
FOR A
STEP-BY-STEP
VIDEO TUTORIAL

@ericabunker

BLAZER A

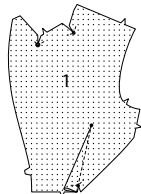
INTERFACING

- Pin interfacing to wrong side of **BODICE FRONT** (1), **WELT** (2), **BODICE BACK** (3), **LOWER FRONT** (4), **FLAP** (5), **UPPER WELT** (6), **LOWER WELT** (7), **UPPER COLLAR** (11), **UNDER COLLAR** (12), **UPPER FRONT FACING** (13), and **LOWER FRONT FACING** (14). Cut a 1-1/2" (3.8cm) wide strip of fusible interfacing from a remnant. Apply to extensions on **UPPER SLEEVE** (15) and **UNDER SLEEVE** (16). If you prefer, apply an additional piece 2" (5cm) wide, 1-1/2" (3.8cm) above lower edge of upper and under sleeve sections, making sure interfacing sections do not overlap. Fuse interfacing in place following manufacturer's directions.

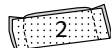


BODICE FRONT AND BACK

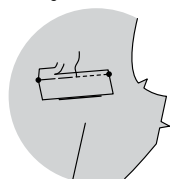
- To reinforce upper small dot and large dot at inner corners of **BODICE FRONT** (1), stitch along seam line 1/2" (1.3cm) on each side of dot, pivoting with needle in fabric at dots, as shown. Clip to reinforced dots at corner, being careful not to clip through stitching. Make **DART** at waist. Press toward center. To reinforce small dot at dart seam, stitch along seam line 1/2" (1.3cm) on each side of dot, as shown. Clip to reinforced dot, being careful not to clip through stitching.



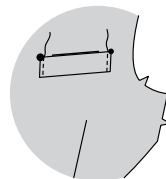
- Fold **WELT** (2) in half, lengthwise with right sides together. Stitch ends. Trim seams; clip corners.



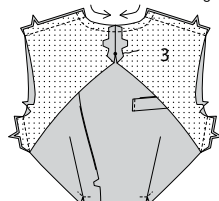
- Turn welt; press. Baste raw edges together. On outside, pin welt to left bodice front, placing basting line along lower placement line, matching small dots. Stitch. Trim seam.



- On outside, press welt up, matching small and large dots. Stitch close to ends of welt, or, if you prefer, invisibly slip-stitch ends to bodice front.

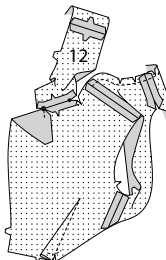


- STAY-STITCH** neck edge of **BODICE BACK** (3). Stitch center back seam from upper edge to small dot, back-stitching at dot to reinforce the seam. Stitch bodice front to bodice back at side and shoulder edges.

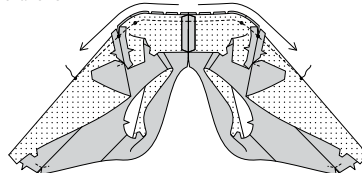


COLLAR

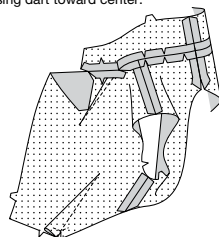
- Stitch center back seam of **UNDER COLLAR** (12). With right sides together, pin front edge of under collar to blazer, matching small dots, large dots, and notches. Stitch notched edge between small and large dots. Press seam open. Do Not trim this seam now. For best results, this seam will be trimmed later. Clip back neck edge of blazer to stay-stitching along curves.



- To stitch remaining neck edge and make dart in front, on inside, with right sides together bring stitching lines together, matching centers back and small dots, placing inner small dot at shoulder seam. Stitch each side from center back to point of dart along stitching lines in direction of arrows.



- Trim neck seam between darts; clip curves. Press seam open, pressing dart toward center.

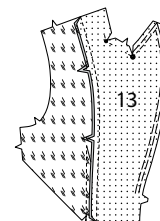


BODICE LINING AND COLLAR

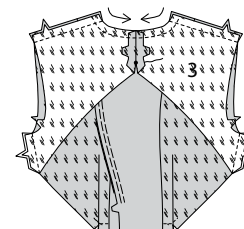
- Make **DART** in **BODICE FRONT LINING** (17). Press toward center. To reinforce small dot at dart seam, stitch along seam line 1/2" (1.3cm) on each side of dot, as shown. Clip to reinforced dot, being careful not to clip through stitching.



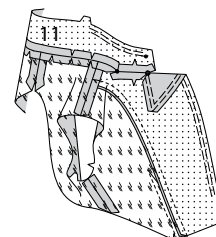
- To reinforce upper small and large dots at inner corners of **UPPER FRONT FACING** (13), stitch along seam line 1/2" (1.3cm) on each side of dot, pivoting with needle in fabric at dots, as shown. Clip to reinforced dots at corner, being careful not to clip through stitching. **EASE** stitch front edge of facing from inner dot on lapel to notch. With right sides together, pin front facing to bodice front lining, matching notches. Stitch. Press seam toward lining.



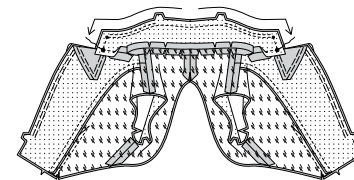
- STAY-STITCH** neck edge of **BODICE BACK** lining (3) sections. Stitch center back seam from neck edge to small dot, back-stitching at dot to reinforce the seam. Stitch back lining to bodice front lining and facing at shoulder and side edges.



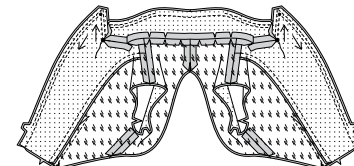
- EASE** **UPPER COLLAR** (11) between small dot and notch, as shown. Clip neck edge of back lining to stay-stitching along curves. With right sides together, pin upper collar to neck edge of front facing and lining, matching centers back, small and large dots, placing inner small dots at shoulder seams. Stitch between large dots, pivoting with needle in fabric at inner corners. Trim back neck seam between shoulder seams; clip curves. Press seams open.



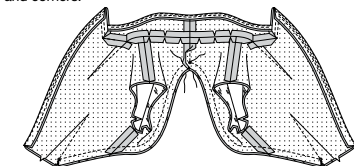
- With right sides together, pin upper collar to under collar, matching centers back, small and large dots. Turn neck seam allowances down. Hand-baste outer edges of upper and under collar together between large dots, working basting stitches from center back to large dots, easing upper collar to fit. Stitch as basted from center back to large dot, overlapping a few stitches at center back, being sure to stitch exactly to the large dots at each end of collar. Anchor thread ends securely at small dots.



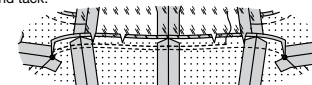
- UNDERSTITCH** the under collar. Pin front facing to blazer, matching small and large dots. Hand-baste outer edges of large dot at neck edge to lower edge of facing, easing front facing to fit. Carefully turn neck seam allowance toward collar so that you can insert machine needle at the large dot. Stitch as basted from large dot to lower edge, being careful not to catch in collar seam allowances at large dot. Trim each seam of collar and facing to within 1/4" (6mm) of stitching, paying close attention to intersecting seam allowances where collar and facing meet. Trim across collar and lapel corners. Press all seams.



- UNDERSTITCH** lapel from upper edge to 3" (7.5cm) above notch. Pin lower edge of bodice and lining together between the small dots at lower dart seam. Stitch between the small dots, breaking stitching at center back. Trim seam and corners.

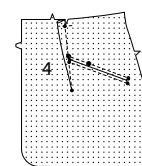


- Turn blazer; press. Reach hand inside armhole openings. Pin seam allowances of facing and lining to blazer at neck edge between the small dots. Stitch, or if you prefer, hand tack.



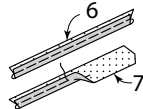
LOWER FRONT AND BACK

- Make **DART** on **LOWER FRONT** (4). Press toward center. To reinforce small dot at dart seam, stitch along seam line 1/2" (1.3cm) on each side of dot, as shown. Clip to reinforced dot, being careful not to clip through stitching. To reinforce inner corners for welts, flap, and pocket, stitch along stitching lines at small and large dots, pivoting with needle in fabric at dots.

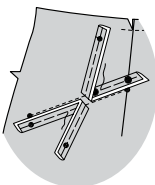


ME2065 - Page 3 of 4

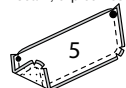
19. To make two welts for each lower pocket, fold UPPER WELT (6) and LOWER WELT (7) in half lengthwise, with wrong sides together; press. Machine-baste long edges together 1/4" (6mm) from raw edge.



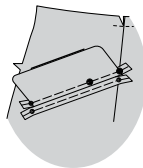
20. On outside, pin welts to lower front, placing basting line of lower welt to lower stitching line, matching small dots. Baste between the small dots. Pin remaining upper welt to lower front along upper stitching line, matching small and large dots. Baste in the same manner.



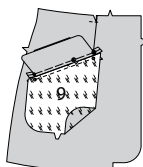
21. With right sides together, stitch facing to FLAP (5) in a 1/4" (6mm) seam, leaving edge with small and large dots open. Trim seam; clip curves.



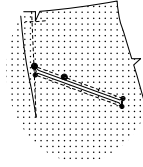
22. Turn flap; press. Machine-baste 1/4" (6mm) from raw edge. On outside, pin flap to lower front (over welt), placing basting along upper stitching line, matching small dots, as shown. Baste.



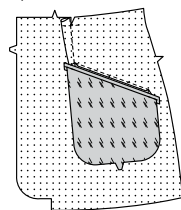
23. With right sides together, pin POCKET LINING (9) to lower front (over welt), matching small dots. Stitch between the small dots in a 1/4" (6mm) seam, backstitching to reinforce.



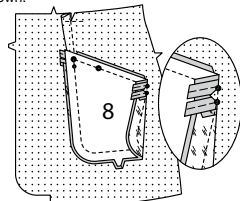
24. Slash blazer separately along slash line, clipping diagonally to dots at corners. (Do not clip welt or pocket lining.)



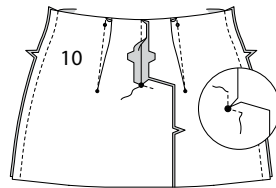
25. Turn pocket lining and clipped corners to inside; press.



26. On inside with right sides together, pin POCKET (8) to lower front, matching small and large dots. Stitch between the dots in a 1/4" (6mm) seam, backstitching to reinforce. Pin raw edges of pocket to pocket lining. Stitch, catching in clipped corners, as shown.

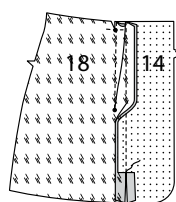


27. Make **DART** on LOWER BACK (10). Press toward center. To reinforce inner corner of lower back vent extensions, stitch along seam line 1" (2.5cm) each side of large dot, stitching through large dot, as shown. Clip to stitching at large dot, being careful not to clip through stitching. Stitch center back seam from upper edge to large dot, back-stitching at dot to reinforce seam. Stitch lower front to lower back at side edges.

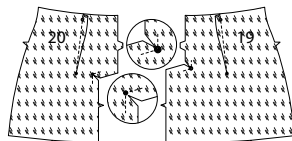


LOWER FRONT FACING AND LINING

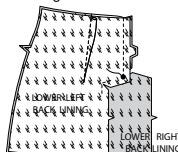
28. Make **DART** in LOWER FRONT LINING (18). Press toward center. To reinforce small dot at dart seam, stitch along seam line 1/2" (1.3cm) on each side of dot, as shown. Clip to reinforced dot, being careful not to clip through stitching. With right sides together, pin LOWER FRONT FACING (14) to front lining. Stitch seam from upper edge to 2-1/4" (5.7cm) above lower edge of facing; back-stitch to reinforce seam. Clip only the facing seam allowance at end of stitching, as shown. Press seam toward lining, pressing under 5/8" (1.5cm) on inner edge of facing below clip, as shown.



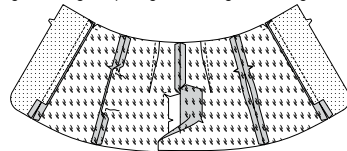
29. Make **DART** in LOWER RIGHT BACK LINING (19) and LOWER LEFT BACK LINING (20). Press darts toward center. To reinforce inner corners of back vent, stitch along seam line 1" (2.5cm) each side of large dot on right back lining and small dot on left back lining, stitching through dots. Clip to stitching at dots, being careful not to clip through stitching.



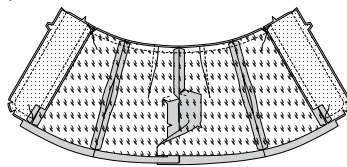
30. With right sides together, pin lower back lining sections together, matching large dots. Stitch from upper edge to large dot, back-stitching at dot to reinforce seam.



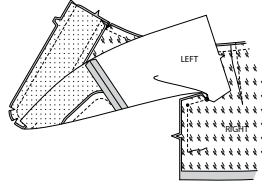
31. Stitch lower front lining to lower back lining at side edges, leaving an opening in each edge for turning.



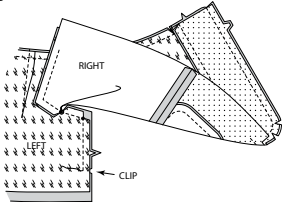
32. With right sides together, pin lower front facing to lower front, matching notches. Stitch front and lower edge. Stitch upper edge between small dots at dart seam. Trim seam; clip curves.



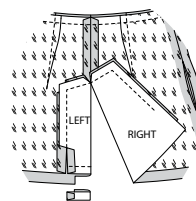
33. With right sides together, pin the back vent edges of right back lining and right blazer back, matching small and large dots. Starting at large dot, stitch right back vent edges together to 2" (5cm) above lower edge of lining, being careful not to catch in left half of blazer and lining.



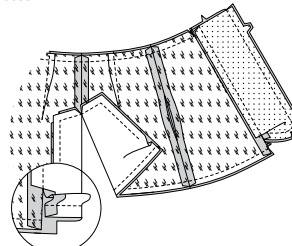
34. With right sides together, pin the back vent edges of left back lining and left blazer back, matching small and large dots. Starting at large dot, stitch left back vent edges together to 2" (5cm) above lower edge of lining, being careful not to catch in right half of blazer and lining. Clip only the left back vent seam of blazer to end of stitching.



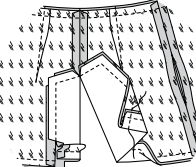
35. Press seam toward lining, pressing under 5/8" (1.5cm) on inner edge of blazer vent below clip. Turn left back vent along foldline so right sides are together, forming a facing. Stitch left back vent exactly 1-1/2" (3.8cm) from lower edge, keeping lining free. Trim facing close to stitching. Trim garment to within 5/8" (1.5cm) of inner edge of facing.



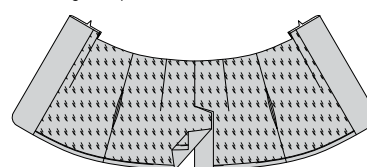
36. With right sides together, pin lower edges of blazer and lining together, matching centers back and seams. Stitch lower edges together between facing seams in 1/2" (1.3cm) seam. Since the blazer is 1" (2.5cm) longer than the lining, folds in the blazer will develop at this point in the construction process.



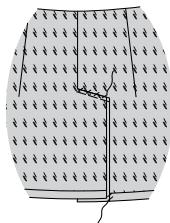
37. At right back vent only, turn up blazer hem over lining (hem will turn up with the blazer), as shown. Stitch remaining right back vent edges together, connecting to previous stitching. Trim seams and corners.



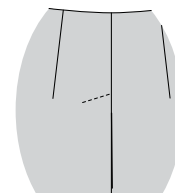
38. Turn blazer and lining right side out, turning left back vent along foldline; press, pressing hem in place. Slip hand through opening in lining and tack hem to blazer seams. Allow lining to drop.



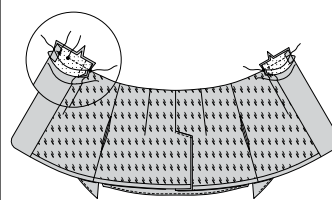
39. Pin right back vent over left back. Slip-stitch upper edge of right back vent to lining. Hand-baste close to upper edge of right back vent through all thicknesses. Slip-stitch front facing and left back vent facing to hem, slip-stitching lining to left back vent facing.



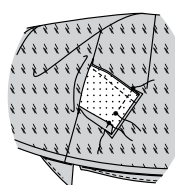
40. On outside, stitch left back as basted through all thicknesses. Remove basting.



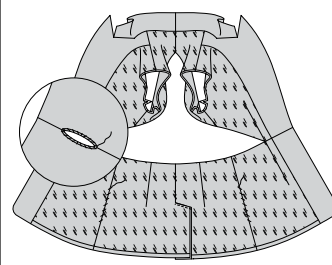
41. On right half of garment, with right sides together and raw edges even, pin lower edges of bodice front to upper edge of lower front, matching small dots and notches, keeping lining and facings away from seamline. Stitch from front edge to small dot at dart seam, leaving an opening between inner small dots, back-stitching to reinforce seams. Trim seam to 3/8" (1cm). Press seam open; pressing seam allowances of facings to inside. Pin left half of garment in the same manner; stitch from front edge to small dot at dart seam. Trim and press. DO NOT leave opening between inner small dots.



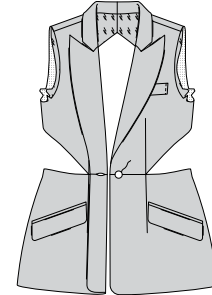
42. On right half of garment, slip hand through opening in lining, pulling out front facing. Pin lower edge of bodice front facing to upper edge of lower front facing. Stitch from front edge to small dot at dart seam, leaving an opening between inner small dots, back-stitching to reinforce seams. Trim seam to 3/8" (1cm). Press seam open. Pin left half of garment in the same manner; stitch from front edge to small dot at dart seam. Trim and press. DO NOT leave opening between inner small dots.



43. On inside, slip-stitch openings in lining closed. To make buttonhole on right half of garment, slip-stitch opening in lower facing to opening in lower front of blazer, and opening in bodice facing to opening in front bodice. Or, machine buttonhole stitch.

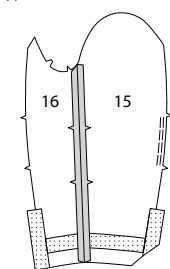


44. On outside, sew button to left front under buttonhole.

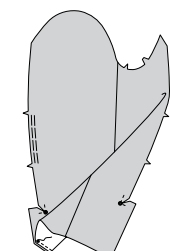


SLEEVE

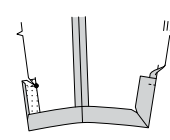
45. Pin UPPER SLEEVE (15) to UNDER SLEEVE (16) at front edge. Stitch front seam. **EASE** back edge of upper sleeve between notches.



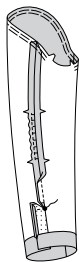
46. To reinforce large dots on upper sleeve extension and under sleeve extension, stitch along seam line 1/2" (1.3cm) on each side of dot, pivoting with needle in fabric at dots. Clip to reinforced dots at inner corners, being careful not to clip through stitching. With right sides together, fold lower corner of upper sleeve, matching small dots. Stitch in a 1/4" (6mm) seam from fold to small dot, back-stitching at dot to reinforce the seam. Press seam open.



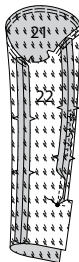
47. Turn corners to inside, pressing up hem and extension on upper sleeve to inside along fold line, forming facing. Press under 1/4" (6mm) on remaining side edge of under sleeve.



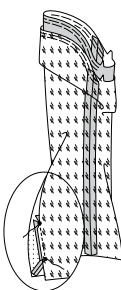
48. With right sides together, pin upper sleeve to under sleeve at back edge, matching large dots, pulling up ease stitches to fit. Stitch from armhole edge to large dot, back-stitching at dot to reinforce the seam. **EASE** upper edge of sleeve between the notches.



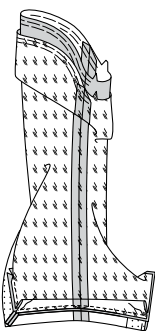
49. To reinforce inner small dot at extension on **UPPER SLEEVE LINING** (21) and inner large dot at **UNDER SLEEVE LINING** (22) extension, stitch along seam line 1/2" (1.3cm) on each side of dot, pivoting with needle in fabric at dots. Clip to reinforced dots at corner, being careful not to clip through stitching. Pin upper sleeve lining to under sleeve lining at front edge. Stitch front seam. **EASE** back edge of upper sleeve between notches. With right sides together, pin upper sleeve to under sleeve at back edge, matching large dots, pulling up ease stitches to fit. Stitch from armhole edge to large dot, back-stitching at dot to reinforce the seam. **EASE** upper edge of sleeve between the notches.



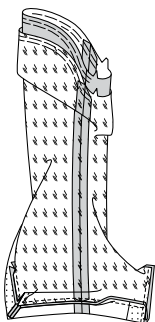
50. With right sides together, pin upper sleeve facing to lining, matching small dots. Stitch between the small dots in a 1/4" (6mm) seam. **Note:** Lower edge of lining will extend. This will form a pleat for wearing ease.



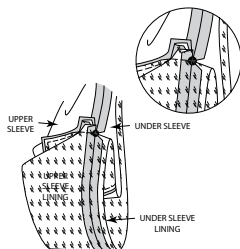
51. Pin sleeve lining to blazer at lower edge with raw edges even. Stitch lower edge of sleeve and sleeve lining edges together in a 1/4" (6mm) seam.



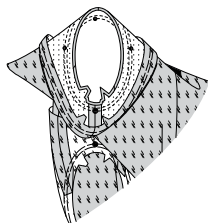
52. At facing edge, stitch end of lining pleat to 1/4" (6mm) seam line. At remaining edge, turn lining pleat to right side of lining, turning fold down towards hem of sleeve. Pin in place. Stitch across edge as shown.



53. Bring remaining extension edges together, matching large dots. Stitch across extensions in a 5/8" (1.5cm) seam through all thicknesses. Back-stitching at dot to reinforce the seam.

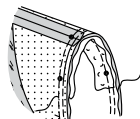


54. Turn sleeve; press. Fold lining away from armhole edge; pin. Hold blazer wrong side out with armhole toward you. With right sides together, pin sleeve to armhole edge with center small dot at shoulder seam, matching large dot at underarm to side seam, and remaining small dots. Pull up ease stitches to fit. To distribute fullness evenly, slide fabric along bobbin threads until there are no puckers or tucks on the seam line. Baste. Stitch. Stitch again 1/8" (3mm) from first stitching. Trim seam below notches close to stitching. Press only the seam allowance, shrinking out fullness.

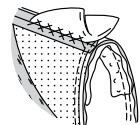


OPTIONAL SHOULDER PADS

55. Cut two remnants of polyester fleece 2" (5cm) x 6" (15cm) for sleeve headings. Pin heading to armhole on the inside of sleeve, placing the center of heading at shoulder seam, having raw edges even. Stitch 1/2" (1.3cm) from blazer side (not the sleeve side).

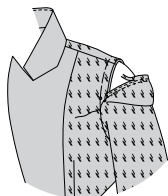


56. Pin shoulder pad to inside of blazer with largest layer of pad against the blazer. The shoulder line of the pad should match the shoulder seam of the blazer and the straightest edge of the pad should extend 1/2" (1.3cm) beyond the armhole seam line. Try on blazer to check pad placement. Adjust to fit until they look right and feel comfortable. On inside, catch stitch each pad to shoulder seam line.

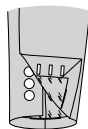


FINISHING

57. On inside, baste bodice lining to blazer at armhole edge (over shoulder pad). Press under sleeve lining along seamline at armhole edge; trim to 3/8" (1cm). Pin pressed edge of sleeve lining to armhole, matching small dots, pulling up ease stitches to fit. Slip-stitch sleeve lining to blazer lining at armhole edge.

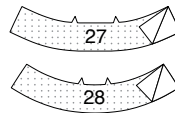


58. Make buttonholes in upper sleeve. Sew buttons under buttonholes on under sleeve.

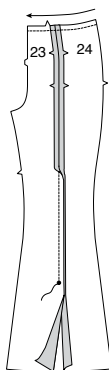


PANTS B

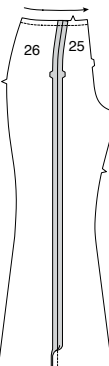
1. Pin interfacing to wrong side of **FRONT FACING** (27) and **BACK FACING** (28). Fuse interfacing in place following manufacturer's directions.



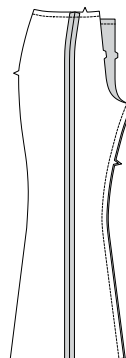
2. With right sides together and raw edges even, pin **FRONT** (23) to **SIDE FRONT** (24), matching large dots and notches. Stitch from upper edge to large dot, backstitching at dot to reinforce the seam. **STAY-STITCH** upper edge.



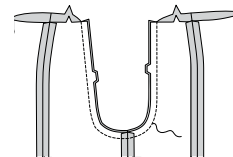
3. Pin **BACK** (25) to **SIDE BACK** (26), matching notches. Stitch. **STAY-STITCH** upper edge.



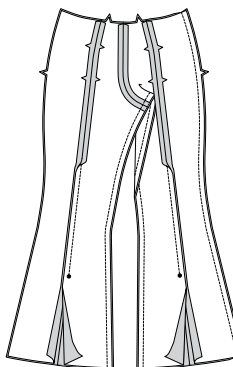
4. Stitch front to back at inner leg edges.



5. With right sides together, pin center seam, matching inner leg seams and notches. Stitch. To reinforce seam, stitch again over first stitching.

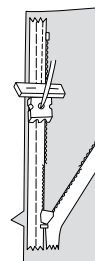


6. Stitch front to back at right side edges, leaving left side edges open.

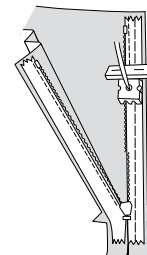


NOTE: Stitch the invisible zipper using an invisible zipper foot.

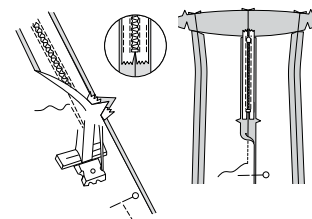
7. Open the zipper and press the tape using a cool iron. On outside, pin right side of the zipper face down on the right side of the zipper opening. Have the coil along the seam line, the tape within the seam allowance and the top stop 3/4" (2cm) below upper edge, as shown. Hand-baste along center of the tape. Position zipper foot at the top of the zipper with right groove of the foot over coil. Stitch along tape to the notch. Back-stitch to reinforce.



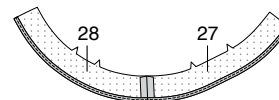
8. Pin the remaining half of the zipper to the left side of the zipper opening in same manner. Make sure the upper and lower edges of the pants are even. Hand-baste along the center of the tape. Position zipper foot at the top of the zipper with left groove over the coil. Stitch along tape to the notch. Back-stitch to reinforce.



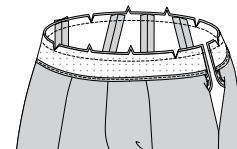
9. Close zipper and check that it is invisible from the outside. Pull the free ends of the zipper tape away from the seam allowance. Pin remaining left side edges together below zipper. Position zipper foot all the way to the left. Stitch seam 1/4" (6mm) above lowest stitch and slightly to the left. Stitch seam for about 3" (7.5cm). Stitch remainder of seam using your regular presser foot. If you prefer, open out each seam allowance at end of zipper and stitch tape to seam allowance.



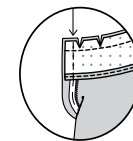
10. Stitch **FRONT FACING** (27) to **BACK FACING** (28) along right side edge. **EDGE FINISH** lower edge.



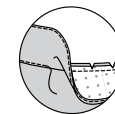
11. Open out left side opening edges of pants, rolling the zipper teeth away from the opening edge. With right sides together, pin facing to pants, matching centers, notches, and side seams. Stitch upper edge. Trim seam; clip curves.



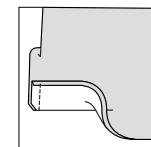
12. Pin left side opening edges together. Using an adjustable zipper foot, stitch 1/2" (1.3cm) from back edges, keeping zipper teeth free. Trim corners. Do not trim center back edges.



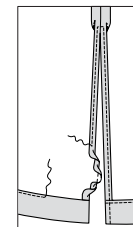
13. UNDERSTITCH the facing as far as possible. Turn facing and left side edges to inside, rolling zipper teeth back in place; press. To keep the facing from rolling to **OUTSIDE**, secure it at the seam allowances by tacking it by hand.



14. Mark length. Press up hem along marking. Press under 1/4" (6mm) on raw edge. At slit opening edges, turn hem to outside along marking. Stitch ends in 5/8" (1.5cm) seams. Trim seams.



15. Turn hem to inside along marking turning in seam allowances on slit opening edges; press. **NARROW HEM** slit opening edges, squaring stitching at opening end. Stitch hem in place.





Congrats!

You've completed your sewing adventure

SHARE YOUR LOOK



Post your pattern and tag us
@simplicity_creative_group and **#knowMepatterns**
for a chance to be featured on our social media.

Look for more PDF patterns at **simplicity.com**

Have a question or need help with your sewing project call us at
1-800-782-0323

