



DONNY Q

knowME™

BY MIMI G

ME2064



Scan QR code  
for a Sew-Along  
video tutorial.



@\_donnyQ



Designed and  
printed in USA

## Average

## MEN'S JACKET AND VEST

**Suggested Fabrics:** Coated Fabrics, Nylon, Water-Resistant Fabric, Waxed Fabric. **Lining:** Cotton Blends, Flannel, Fleece, Polyester Blends. **Interfacing:** Lightweight Fusible.

**Notions:** **A:** Twelve  $\frac{3}{8}$ " (1.5cm) heavy duty snaps, 1½ yds. (1.4m) of  $\frac{1}{2}$ " (1.3cm) twill tape, two barrel stops (optional). **B:** 22" (56cm) separating zipper, three 9" (23cm) zippers, four  $\frac{5}{8}$ " (1.5cm) heavy duty snaps, 4½" (11cm) length of  $\frac{3}{4}$ " (2cm) grosgrain ribbon, one  $\frac{3}{4}$ " (2cm) D-Ring.

Sizes	34	36	38	40	42	44	46	48	50	52	
<b>BODY MEASUREMENTS: Select pattern size based on body measurements</b>											
Chest	34	36	38	40	42	44	46	48	50	52	Ins.
Waist	28	30	32	34	36	39	42	44	46	48	"
Hip	35	37	39	41	43	45	47	49	51	53	"

<b>Jacket A</b>	45***	3¼	3⅜	3⅝	3⅞	3½	3½	3½	3¾	3¾	3⅞	Yds.
	60***	2⅝	2⅞	2⅞	2⅞	2¾	2¾	2⅞	2⅞	2⅞	3	"
<b>Interfacing</b>	20"	⅞	⅞	1	1	1	1	1	1	1	1	"
<b>Vest B</b>	45***	2	2	2	2½	2½	2½	2½	2½	2½	2½	Yds.
	60***	1½	1½	1½	1½	1½	1¾	1¾	1¾	1¾	1¾	"
<b>Lining</b>	45***	1½	1½	1½	1½	1½	1¾	1¾	1¾	1¾	1¾	"
<b>Interfacing</b>	20"	1	1	1	1	1	1	1	1	1	1	"

## FINISHED GARMENT MEASUREMENTS (Includes Design and Wearing Ease)

<b>A,B Chest</b>	41½	43½	45½	47½	49½	51½	53½	55½	57½	59½	Ins.
<b>B Waist</b>	41½	43½	45½	47½	49½	51½	53½	55½	57½	59½	"

## Width, lower edge

<b>Jacket A, Vest B</b>	41½	43½	45½	47½	49½	51½	53½	55½	57½	59½	Ins.
-------------------------	-----	-----	-----	-----	-----	-----	-----	-----	-----	-----	------

## Finished back length from base of neck

<b>Jacket A</b>	15¾	16	16¼	16½	16¾	17	17¼	17½	17¾	18	Ins.
<b>Vest B</b>	27¼	27½	27¾	28	28¼	28½	28¾	29	29¼	29½	"

\*with nap \*\*without nap

## Moins Facile

## VESTET ET GILET POUR HOMMES

**Tissus Conseillés:** Tissus enduits, Nylon, Tissue résistant à l'eau, Tissue huilé. **Doubleure :** Cotonnades, Flanelle, Molleton, Tissue mélangés de polyester. **Entoilage :** thermocollant léger.

**Mercerie:** **A :** 12 boutons-pression résistants de 1.5cm, 1.4m de galon croisé de 1.3cm, 2 arrêts de cordon cylindre (facultatif). **B :** 56cm de fermeture à glissière séparable, 3 fermetures à glissière de 23cm, 4 boutons-pression résistants de 1.5cm, 11cm de ruban gros-grain de 2cm, 1 anneau D de 2cm.

Tailles	34	36	38	40	42	44	46	48	50	52	
<b>MESURES DU CORPS: Choisissez la taille du patron basée sur les mesures du corps</b>											
Poitrine	87	92	97	102	107	112	117	122	127	132	cm
Taille	71	76	82	87	92	99	107	112	117	122	"
<b>Hanches (23cm au-dessous de la taille)</b>											
	89	94	99	104	109	115	119	124	128	135	cm

<b>Veste A</b>	115cm*	3.0	3.0	3.1	3.1	3.1	3.2	3.2	3.4	3.4	3.5	m
	150cm*	2.2	2.2	2.3	2.4	2.4	2.5	2.5	2.6	2.6	2.7	"
<b>Entoilage</b>	51cm	0.8	0.8	0.8	0.9	0.9	0.9	0.9	0.9	0.9	0.9	"
<b>Gilet B</b>	115cm*	1.8	1.8	1.8	1.8	1.9	1.9	1.9	1.9	1.9	1.9	m
	150cm*	1.5	1.5	1.5	1.5	1.5	1.6	1.6	1.6	1.6	1.6	"
<b>Doubleure</b>	115cm**	1.0	1.3	1.3	1.3	1.4	1.4	1.6	1.6	1.6	1.6	"
<b>Entoilage</b>	51cm	0.8	0.9	0.9	0.9	0.9	0.9	0.9	0.9	0.9	0.9	"

## MESURES DES VÊTEMENTS FINI (Motif et aisance de port compris)

<b>A,B Poitrine</b>	105	110	116	121	126	131	136	141	146	151	cm
<b>B Taille</b>	105	110	116	121	126	131	136	141	146	151	"

## Largeur à l'ourlet

<b>Veste A, Gilet B</b>	105	110	116	121	126	131	136	141	146	151	cm
-------------------------	-----	-----	-----	-----	-----	-----	-----	-----	-----	-----	----

## Longueur finie – dos, votre nuque à l'ourlet

<b>Veste A</b>	40	41	41	42	43	43	44	44	45	46	cm
<b>Gilet B</b>	69	70	70	71	72	72	73	74	74	75	"

\*avec sens \*\*sans sens



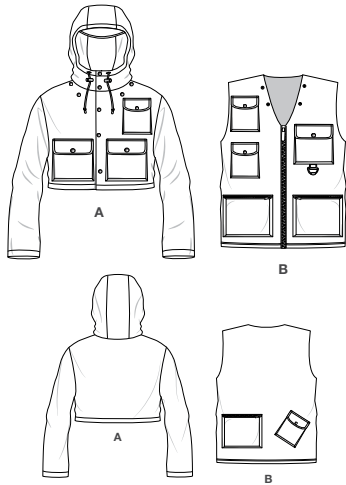
A



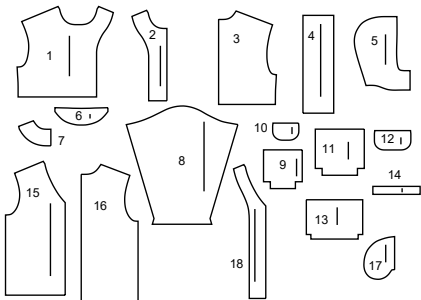
B



@\_donnyQ



#### 18 PATTERN PIECES



- 1 FRONT - A
- 2 FRONT INTERFACING - A
- 3 BACK - A
- 4 HOOD CENTER - A
- 5 HOOD SIDE - A
- 6 VISOR - A
- 7 BACK FACING - A
- 8 SLEEVE - A
- 9 POCKET (SMALL) - A,B
- 10 FLAP (SMALL) - A,B
- 11 POCKET (MEDIUM) - A,B
- 12 FLAP (MEDIUM) - A,B
- 13 POCKET (LARGE) - A,B
- 14 GUSSET - A,B
- 15 FRONT - B
- 16 BACK - B
- 17 POCKET - B
- 18 FRONT INTERFACING - B

**PATTERN MARKINGS**

**GRAINLINE:** Place on straight grain of fabric, parallel to selvage or fold.

**FOLDLINE:** Place line on fold of fabric.

**BUTTONHOLE MARKING:** Indicates exact length and placement of buttonholes.

**BUTTON MARKING:** Indicates button placement.

**NOTCHES AND SYMBOLS:** For matching seams and construction details.

Indicates the Bustline, Waistline, Hip and/or Biceps. Measurements refer to circumference of Finished Garment (Body Measurement + Wearing Ease + Design Ease). Adjust pattern if necessary. The measurement excludes pleats, tucks, darts and seam allowances.

**SEAM ALLOWANCE:** 5/8" (1.5cm) included unless otherwise indicated, but not printed on tissue.

**ADJUST IF NECESSARY**

Lengthen or Shorten at adjustment lines (==) or where indicated on pattern. If substantial length is added, you may need to purchase additional fabric.

**TO SHORTEN:** Crease along adjustment line. Make a fold half the amount needed. Tape in place.

**TO LENGTHEN:** Slash between adjustment lines. Spread amount as needed, keeping edges parallel. Tape over paper.

When Alteration lines are not on tissue, lengthen or shorten at lower edge.

**CUTTING AND MARKING**

★ Cut other pieces first, allowing enough fabric to cut this piece. Open fabric. For "Cut 1" pieces, cut piece once on single layer of fabric with piece face up on right side of fabric.

Pattern may have cutting lines for several sizes. Select the proper cutting line or pattern pieces for your size.

Before **CUTTING** place all pieces on fabric according to layout. Pin. (**Layouts show approximate position of pattern pieces; position may vary according to your pattern size.**) Cut **ACCURATELY**, cutting notches outward.

Before removing pattern, **TRANSFER MARKINGS** and lines of construction to Wrong Side of fabric, using the Pin and Chalk Pencil method or Tracing Paper and Dressmaker Wheel. Markings needed on right side of fabric should be thread traced.

**NOTE:** Broken-line boxes (a! b! c!) in layouts represent pieces cut by measurements provided.

**SHRINK FABRIC** if not labeled pre-shrunk. Press.

**CIRCLE LAYOUT** for View, Size, Fabric Width.

Use **WITH NAP** layout for fabrics with one-way designs, nap, pile or surface shading. Because most knits have surface shading, a with nap layout is used.

For **DOUBLE THICKNESS (WITH FOLD)** - fold fabric with right sides together.

\* **DOUBLE THICKNESS (WITHOUT FOLD)** - For fabrics with nap, fold fabric crosswise, right sides together. Mark as shown. Cut along crosswise fold of fabric (A). Turn upper layer 180° so arrows go in same direction and place over lower layer, right sides together (B).

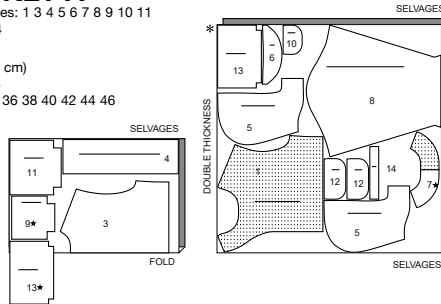
For **SINGLE THICKNESS** - place fabric right side up. (For Fur Pile fabrics, place pile side down.)

## CUTTING LAYOUTS

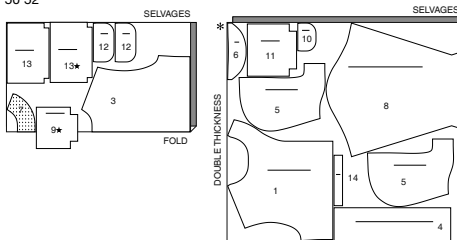
### JACKET A

use pieces: 1 3 4 5 6 7 8 9 10 11  
12 13 14

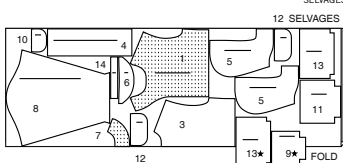
45" (115 cm)  
with nap  
sizes 34 36 38 40 42 44 46



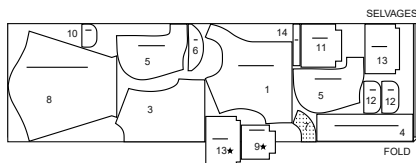
45" (115 cm)  
with nap  
sizes 48 50 52



60" (150 cm)  
with nap  
sizes 34 36 38



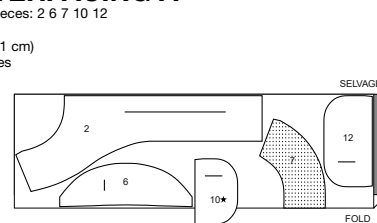
60" (150 cm)  
with nap  
sizes 40 42 44 46 48 50 52



### INTERFACING A

use pieces: 2 6 7 10 12

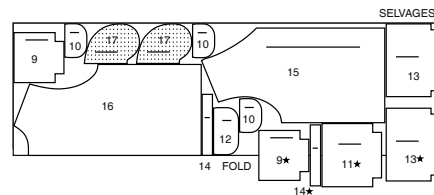
20" (51 cm)  
all sizes



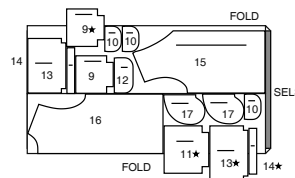
### VEST B

use pieces: 9 10 11 12 13 14 15 16 17

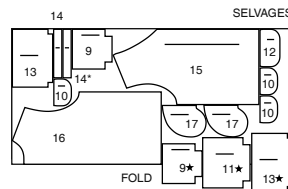
45" (115 cm)  
with nap  
all sizes



60" (150 cm)  
with nap  
sizes 34 36 38 40 42 44



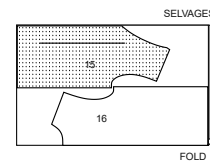
60" (150 cm)  
with nap  
sizes 46 48 50 52



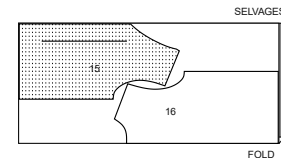
### LINING B

use pieces: 15 16

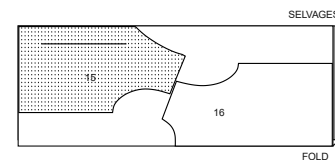
45" (115 cm)  
without nap  
size 34



45" (115 cm)  
without nap  
sizes 36 38 40 42 44



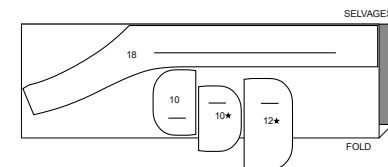
45" (115 cm)  
without nap  
sizes 46 48 50 52



### INTERFACING B

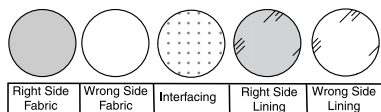
use pieces: 10 12 18

20" (51 cm)  
all sizes



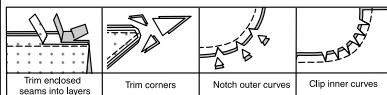
## SEWING INFORMATION

### FABRIC KEY



### SEAM ALLOWANCES

Use 5/8" (1.5cm) seam allowances unless otherwise indicated.



### PIN AND FIT

Pin or baste seams, **RIGHT SIDE TOGETHER**, matching notches. Fit garment before stitching major seams.

### PRESS

Press seam allowances flat; then open unless otherwise stated. Clip where necessary so they lie flat.

## GLOSSARY

Sewing terms appearing in **BOLD TYPE** in Sewing Instructions are explained below.

**EDGE STITCH** - Stitch close to finished edge or seam.

**EASE STITCH** - Stitch along seamline, using long machine stitches. Pull thread ends when adjusting to fit.  
NOTE: For sleeve caps, make a second row of long machine stitches 1/4" (6mm) away in seam allowance, for more control.

**FINISH** - Stitch 1/4" (6mm) from raw edge and finish with one of the following: (1) Pink OR (2) Overcast OR (3) Turn in along stitching and stitch close to fold OR (4) Overlock. **OPTIONAL FOR HEMS:** Apply Seam Binding.

**SLIP STITCH** - Slide needle through a folded edge, then pick up a thread of underneath fabric.

**STAYSTITCH** - Stitch 1/8" (3mm) from seamline in seam allowance (usually 1/2" (13mm) from raw edge).

**TOPSTITCH** - On outside, stitch 1/4" (6mm) from edge, seam or previous stitching, using presser foot as guide, or stitch where indicated in instructions.

**UNDERSTITCH** - Open out facing or underside of garment; stitch to seam allowance close to seam.



SCAN QR CODE  
FOR A  
STEP-BY-STEP  
VIDEO TUTORIAL

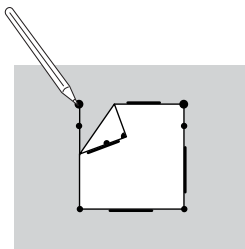
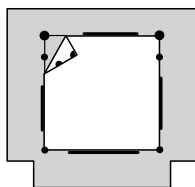
@\_donnyQ

## SEWING DIRECTIONS

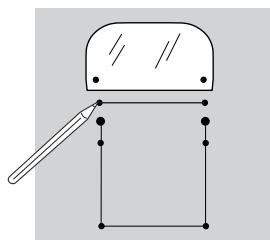
### MARKING PLACEMENT LINES FOR POCKETS AND FLAPS

1. Construct pocket and flaps as indicated in sewing directions.

To mark placement lines for pockets, using a piece of cardboard, trace shape of pocket using fold lines as a guide. Transfer markings to garment, in the location of your choosing.



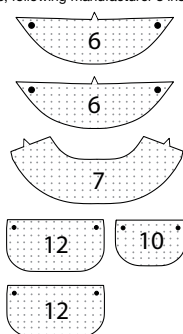
2. For flaps, mark a placement line the width of flap between small dots.



### JACKET A

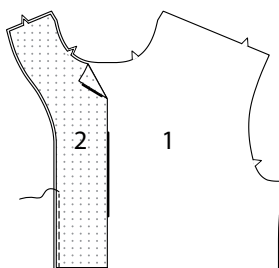
#### Interfacing

3. Fuse **INTERFACING** to wrong side of all matching **FABRIC** pieces, following manufacturer's instructions.

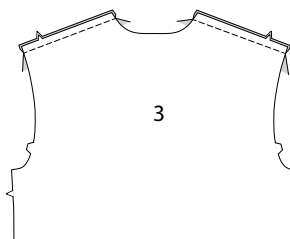


### Front and Back

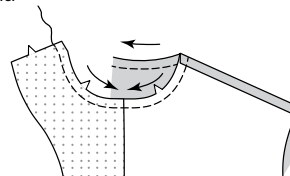
4. Fuse **FRONT INTERFACING** (2) to front edges of **FRONT** (1) having raw edges even. **FINISH** front edges of self-facing.



5. With right sides together, stitch front to **BACK** (3) at shoulders.



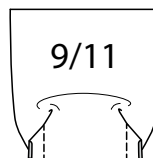
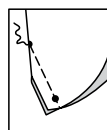
6. **STAYSTITCH** neck edge of garment in direction of arrows.



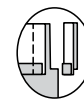
### Pockets

**NOTE:** Pockets are interchangeable and can be applied as desired.

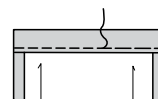
7. To make dart seam in **POCKET** (9 or 11), with **RIGHT** sides together, bring broken lines together, matching small dots. Stitch along broken line from raw edge to point. Press.



8. Turn in 1/4" (6mm) on upper edge of pocket. Press. Turn upper edge to outside along foldline. Stitch ends. Trim.

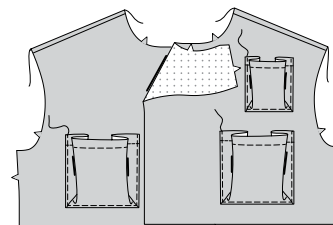


9. Turn upper edge of pocket to inside, turning in remaining seam allowances. Press. Baste close to inner pressed edge. **TOPSTITCH** along basting.

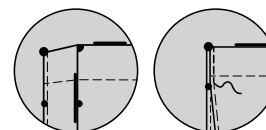


Mark placement lines for pockets and flaps. See **MARKING PLACEMENT LINES FOR POCKETS AND FLAPS**.

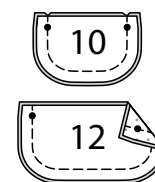
10. On outside, pin pocket to front as shown or as desired. **EDGE STITCH** pocket in place.



11. Press outer edges of pocket along fold line, bringing upper edges of pocket together matching large and small dots. Press. **EDGE STITCH** upper edge of pocket in place ending at small dots.



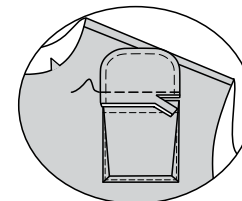
12. With right sides together, pin **FLAP** (10 or 12) sections together. Stitch keeping upper edge open. Trim seam.



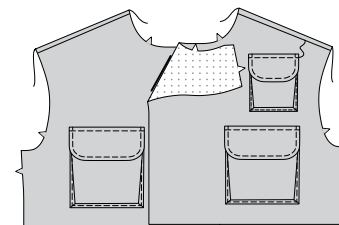
13. Turn flap right side out. Press. **TOPSTITCH** flap.



14. Pin flap to front sections, placing seamline along marked placement line. Baste. Stitch along seamline between small dots. Trim flap seam allowance to a scant 1/4" (6mm), being careful not to cut garment.

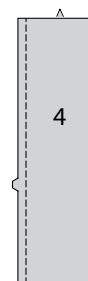


15. Turn flap down. Press. **TOPSTITCH** upper edge of flap, encasing trimmed edge.

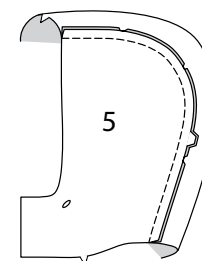


### Hood

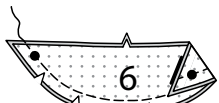
16. Machine stitch 1/2" (1.3cm) from side edges of **HOOD CENTER** (4), using small machine stitches.



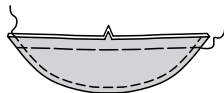
17. With right sides together pin **HOOD SIDE** (5) sections to each side of hood center, matching notches, clipping to stitching if necessary. Baste. Stitch. Press seams toward center. Make buttonholes in hood front at markings.



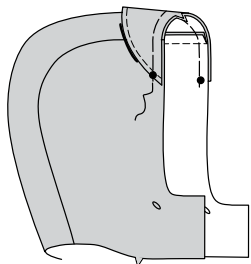
**18.** With right sides together, pin VISOR (6) sections together. Stitch outer edge leaving edge with large dots open. Trim.



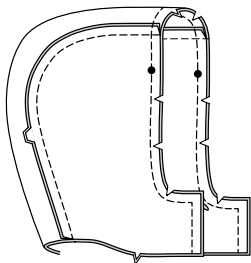
**19.** Turn visor right side out. Press. Baste raw edges together. **TOPSTITCH** outer edges of visor.



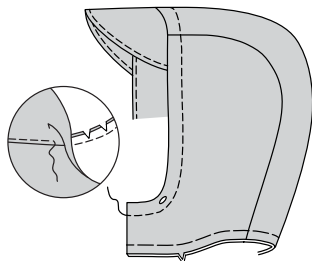
**20.** On outside, pin visor to upper edge of hood matching notches and large dots. Baste.



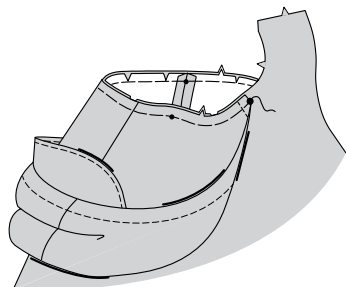
**21.** Stitch hood facing seams in same manner as hood, omitting buttonholes. With right sides together, pin facing to hood matching seams and centers. Stitch front edges. Trim.



**22. UNDERSTITCH** hood facing as far as possible. Turn facing to inside. Press. Baste raw edges together. **TOPSTITCH** front edge of hood 1" (2.5cm) from finished edge.

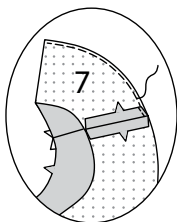


**23.** On outside, pin hood to neck edge matching large dots. Baste.

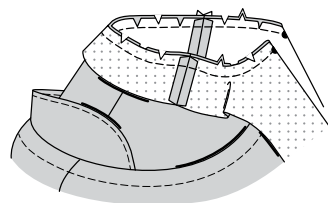


### Front and Back Facings

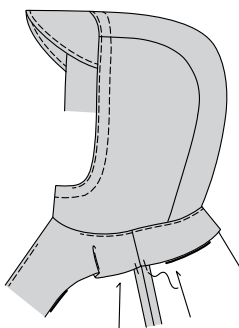
**24. FINISH** unnotched edge of BACK FACING (7). With right sides together, stitch front facings to each side of back facing matching notches.



**25.** Fold front self-facing to outside, along fold line. Pin facings to neck edge (over hood) having raw edges even. Clip to stay-stitching if necessary. Baste. Stitch entire neck edge. Trim.

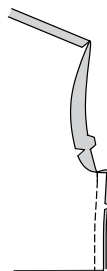


**26. UNDERSTITCH** facings as far as possible. Turn facings to inside. Press, pressing hood out. Hand tack facings at shoulder seams.

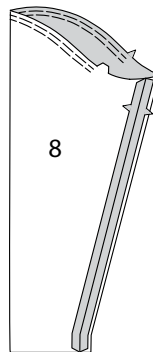


### Sleeves

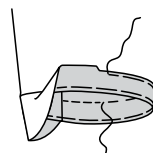
**27.** Stitch front to back at side seams.



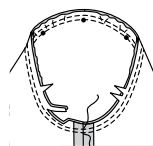
**28. EASESTITCH** upper edge of SLEEVE (8) between notches. Stitch underarm seam of sleeve sections.



**29.** Turn up sleeve hem. Baste close to fold. Turn in 1/4" (6mm) on raw edge. Baste hem in place close to upper edge. Press. **TOPSTITCH** hem along upper basting.

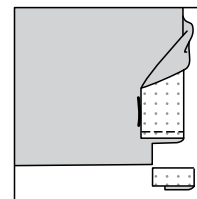


**30.** With right sides together, pin sleeve to armhole edge; placing center small dot at shoulder seam, matching remaining dots and notches, baste. Stitch. Stitch again 1/4" (6mm) away in seam allowance. Trim close to stitching below notches. Press seam allowances flat. Turn seam allowances toward sleeve.

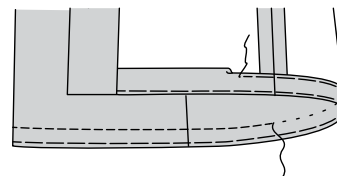


### Finishing

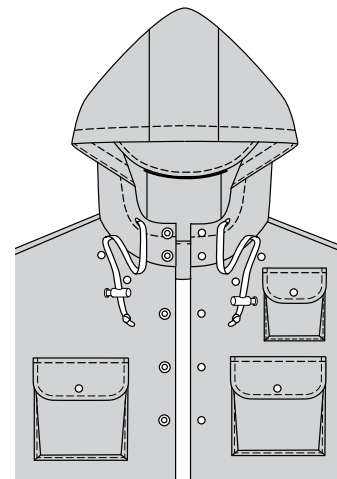
**31.** Turn lower edge of facing to outside along seam. Stitch across facing 1-1/4" (3.2cm) above raw edge. Trim, as shown.



**32.** Turn facing to inside, turning up hem. Baste close to fold. Trim hem to an even width. Turn in 1/4" (6mm) on raw edge. Baste hem in place close to upper edge, as shown. Press. Sew facings to hem. **TOPSTITCH** hem along upper basting, continuing to opening edges.



**33.** Apply snaps socket half of snaps to left front and hood at markings. Apply knob half of snaps to right front and hood at markings. Apply socket half of snaps to pocket flaps. Apply knob half to pocket at markings. Apply socket half of snaps to upper edge of front. Note: Remaining half of snaps will be used for vest. Cut a piece of twill tape 42" (107cm) long. Attach a safety pin to one end of twill tape. Insert tape into openings of casing having ends extend evenly. Apply barrel stops to ends of tape. Knot ends.



### VEST B

#### Interfacing

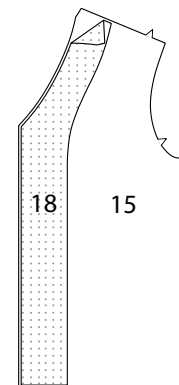
**1.** Fuse INTERFACING to wrong side of all matching FABRIC pieces, following manufacturer's instructions.



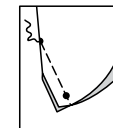
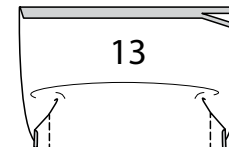
#### Front and Back

**NOTE:** Pockets are interchangeable and can be applied as desired.

**2.** Fuse FRONT INTERFACING (18) to wrong side of FRONT (15) sections following manufacturer's directions.

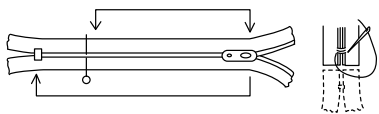


**3.** Construct zipper pockets as follows: Press under 5/8" (1.5cm) seam allowance on upper edge of POCKET (13). Trim to 3/8" (1cm). To make dart seam in lower edge of pocket, with right sides together, bring broken lines together, matching small dots. Stitch along broken line from raw edge to point. Press.





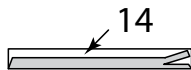
**4. NOTE:** It is necessary to shorten zipper. Measure the opening between inner small dots. To make new zipper stop, mark placement of new zipper stop. Whipstitch across teeth at marking. Cut zipper 3/4"(2cm) below the new stop.



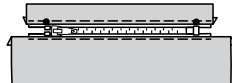
**5.** On inside, pin one half of closed zipper under pressed edge of pocket, having top and bottom stop at small dots. **EDGE STITCH** zipper in place using an adjustable zipper foot, clearing zipper teeth.



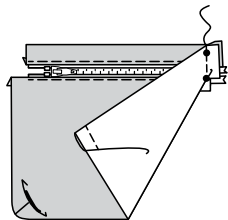
**6.** Press under lower edge of GUSSET (14), trim to 1/4"(6mm).



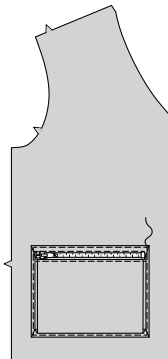
**7.** Pin remaining half of zipper to lower edge of gusset, having top and bottom stop at small dots. **EDGE STITCH** zipper in place.



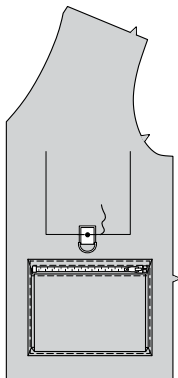
**8.** Bring upper side edges of pocket together matching small dots. Stitch across ends, using an adjustable zipper foot. Being careful not to catch in zipper stops in stitching. Trim ends.



**9.** Press pocket along fold lines, setting in crease. Press under seam allowances on outer edges of pocket. Apply pockets, as shown OR as desired. **EDGE STITCH** pocket in place.

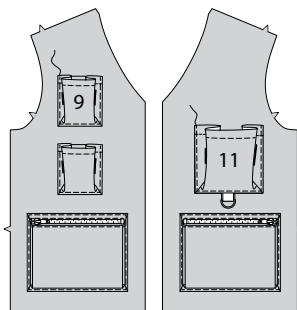


**10. FOR TAB OPTION POCKET-** Cut a piece of ribbon 3-1/2"(9cm) long OR as desired. Fold ribbon in half, threading D ring through one end. Fold small dot marking from pocket to marked placement line. Pin tab to front, centering ends over large dot, having raw edges facing upwards, as shown. Baste.

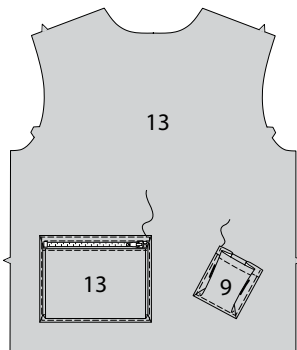


Construct remaining pockets (9 or 11), as shown in View A, steps 7 through 9. Mark placement lines. See **MARKING PLACEMENT LINES FOR POCKETS AND FLAPS.**

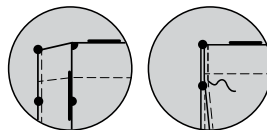
**11.** On outside, pin pockets to front, as shown on front of envelop OR as desired, **EDGE STITCH** pockets in place.



**12. EDGE STITCH** pockets to BACK (16) as shown, or as desired.

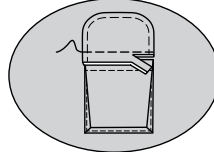


**13.** Press outer edges of pocket along fold line, bringing upper edges of pocket together matching small dots. Press. **EDGE STITCH** upper edge of pocket in place ending at small dots.

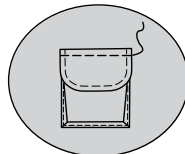


Construct remaining pocket flaps (10 or 12), as shown in View A, steps 12 and 13. Mark placement lines. See **MARKING PLACEMENT LINES FOR POCKETS AND FLAPS.**

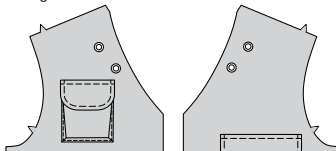
**14.** Pin flap to front and back sections, placing seamline along marked placement line. Baste. Stitch along seamline between small dots. Trim flap seam allowance to a scant 1/4"(6mm), being careful not to cut garment.



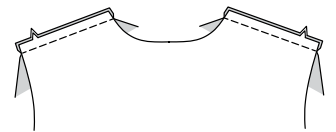
**15.** Turn flap down. Press. **TOP STITCH** upper edge of flap, encasing trimmed edge.



**16.** Apply remaining knob half of snaps to upper front edge at markings.

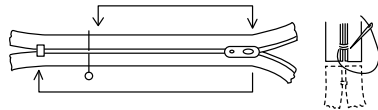


**17.** With right sides together, stitch front to back at shoulder seams.

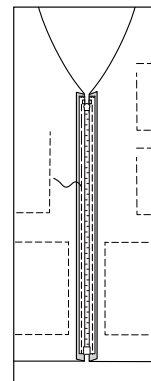


### Zipper

**18. NOTE:** You may need to adjust the length of your Separating Zipper. Always shorten separating zippers from the top. Measure front opening edge from 7/8"(2.2cm) above lower raw edge to 7/8"(2.2cm) below upper edge. Mark the desired length on the zipper tape. Cut off extra zipper 7/8"(2.2cm) above mark, making sure that the zipper pull is well below where you are going to cut. Do not discard the pieces. Using pliers, remove the teeth above your shortening mark and pry the top-stops open and remove them from the discarded pieces of zipper. Reinstall top stops by crimping them in place immediately above the last remaining tooth. For plastic zippers, you may need to purchase a top stop.



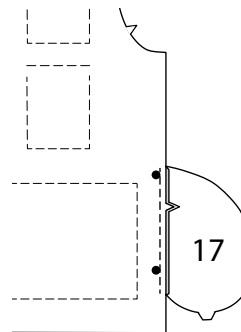
**19.** Press under 5/8"(1.5cm) on front opening edges. Pin closed zipper under pressed edges, placing lower zipper stop 1/4"(6mm) above lower seam allowance and having pressed edges just clearing zipper teeth. Baste. Using an adjustable zipper foot, on outside, stitch 1/4"(6mm) from pressed edges, catching in zipper tape.



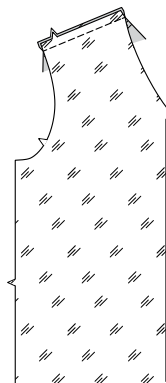
### Side Seam Pockets and Lining

**20.** Stitch POCKET (17) sections to front and back, at each side, in 1/4"(6mm) seam. Press seams toward pockets, pressing pockets out.

**Tip:** Pin pockets out of the way while stitching remaining seams.

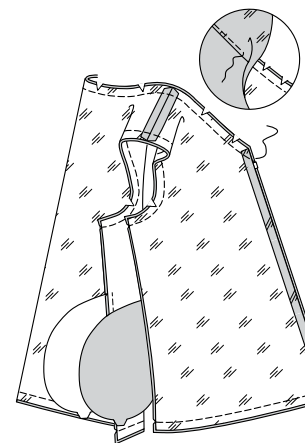


**21.** Stitch front to back LINING sections together at shoulder seams. Press under 5/8"(1.5cm) on front opening edges.



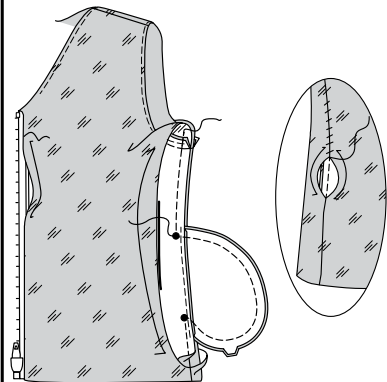
**22.** With right sides together, pin lining to vest. Stitch lower, neck and armhole edges. Trim.

**UNDERSTITCH** lining, as far as possible. Turn facing/lining to inside by pulling front sections through shoulders and both out one side opening. Press.



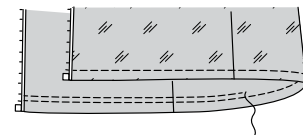
**23.** Starting 2"(5cm) above armhole seam and ending 2"(5cm) below seam at lower edge, stitch back to front sections at sides, leaving open between large dots, as shown. Stitch pocket edges together to side seams. Clip back seam allowances above and below pockets. Press pockets toward front. Turn in seam allowance on side edges of lining. **SLIP STITCH** edges together over seam. Press.

**SLIP STITCH** front lining to zipper tape, clearing zipper teeth.



### Finishing

**24. Optional:** **TOP STITCH** lower edge of garment 1"(2.5cm) above finishing edge. Stitch again 1/4"(6mm) away from first stitching.



Apply socket half of snaps to pocket flaps. Apply knob half to pockets at markings in same manner as for View A step 33. Snap vest to underside of jacket while wearing.



# Congrats!

You've completed your sewing adventure

---

## SHARE YOUR LOOK



Post your pattern and tag us  
**@simplicity\_creative\_group** and **#knowMepatterns**  
for a chance to be featured on our social media.

Look for more PDF patterns at **simplicity.com**

Have a question or need help with your sewing project call us at  
1-800-782-0323



KnowMe ©2023 a division of IG Design Group Americas Inc. • Atlanta, GA 30342 USA www.thedesigngroup.com • All Rights Reserved. www.mccall.com • Made in the U.S.A. Fabriqué aux États-Unis.  
To be used for individual private home use only and not for commercial or manufacturing purposes. • A usage privé seulement et non à des fins commerciales ou de production en série. • Para uso privado solamente, no se puede utilizar con propósitos de comercialización o de producción en serie.