

BRITTANY J. JONES

knowME[™]
BY MIMI G

ME2063



A

B

Scan QR code for a Sew-Along video tutorial.



@brittanyjones

Designed and printed in USA

Average

MISSES' AND WOMEN'S ROMPER AND JUMPSUIT

Suggested Fabrics: Chambray, Cotton Blends, Linen Blends. **Interfacing:** Lightweight Fusible.

Notions: A, B: One 9" (23cm) zipper (adjust to fit), two ¾" (1.5cm) buttons, ¾ yd. (0.7m) ¾" (1cm) elastic.

Sizes	10	12	14	16	18	20W	22W	24W	26W	28W
European	36	38	40	42	44	46	48	50	52	54

BODY MEASUREMENTS: Select pattern size based on body measurements

Bust	32½	34	36	38	40	42	44	46	48	50	Ins.
Waist	25	26½	28	30	32	35	37	39	41½	44	"
Hip -9" below waist	34½	36	38	40	42	44	46	48	50	52	"
Back-neck to waist	16	16¼	16½	16¾	17	17¼	17¾	17½	17¾	17¾	"

Interfacing A, B 20" -1½ yds.

Romper A	45"*	3¼	3¼	3¼	3¼	3¼	3¼	3¼	4	4¼	Yds.
	60"*	2¼	2¼	2¼	2¾	2¾	2¾	2¾	3	3	"

Jumpsuit B	45"*	4½	4¾	4¾	4¾	5¼	5¼	5¼	5½	5¾	Yds.
	60"*	3¼	3¼	3¼	3¼	3¾	3¾	3¾	4	4	"

FINISHED GARMENT MEASUREMENTS (Includes Design and Wearing Ease)

A, B Bust	38½	40	42	44	46	47½	49½	51½	53½	55½	Ins.
A, B Waist	40	41½	43½	45½	47½	48	50	52	54	56	"
A, B Hip	42½	44	46	48	50	51	53	55	57	59	"

Width, each leg

Romper A	28	29	30	31	32	31½	32½	33½	34½	35½	Ins.
Jumpsuit B	28	29	30	31	32	29	30	31	32	33	"

Finished back length from base of neck

Romper A	33	33½	34	34½	35	36	36½	37	37½	38	Ins.
Jumpsuit B	58	58½	59	59½	60	60	60½	61	61½	62	"

*with nap **without nap

Moins Facile

BARBOTEUSE ET COMBINAISON POUR JEUNES FEMMES ET FEMMES

Tissus Conseillés: Chambray, Cotonnades, Lin mélangés. **Entoilage:** Thermocollant léger.

Mercerie: A, B: 1 fermeture à glissière de 23cm (adaptez pour ajuster), 2 boutons de 1.5cm, 0.7m d'élastique de 1cm.

Tailles	10	12	14	16	18	20W	22W	24W	26W	28W
Françaises	38	40	42	44	46	48	50	52	54	56
Européen	36	38	40	42	44	46	48	50	52	54

MESURES DU CORPS: Choisissez la taille du patron basée sur les mesures du corps

Poitrine	83	87	92	97	102	107	112	117	122	127	cm
Taille	64	67	71	76	81	89	94	99	105	112	"

Hanches (23cm au-dessous de la taille)

	88	92	97	102	107	112	117	122	127	132	cm
Dos du cou à la taille	40.5	41.5	42	42.5	43	44	44	44.5	45	45	"

Entoilage A, B 51cm - 1.4m

Barboteuse A	115cm*	2.7	2.9	2.9	2.9	3.1	3.3	3.3	3.4	3.5	3.8	m
	150cm*	2.1	2.1	2.1	2.1	2.2	2.6	2.6	2.6	2.7	2.7	"

Combinaison B	115cm*	4.1	4.2	4.2	4.3	4.5	4.6	4.7	4.8	5.0	5.1	m
	150cm*	2.9	2.9	2.9	3.0	3.0	3.4	3.5	3.5	3.5	3.7	"

MESURES DES VÊTEMENTS FINI (Motif et aisance de port compris)

A, B Poitrine	98	102	107	112	117	121	126	131	136	141	cm
A, B Taille	102	105	110	116	121	122	127	132	137	142	"
A, B Hanches	108	112	117	122	127	130	135	140	145	150	"

Largeur, chaque jambe

Barboteuse A	71	74	76	79	81	80	83	85	88	90	cm
Combinaison B	71	74	76	79	81	74	76	79	81	84	"

Longueur finie – dos, votre nuque à l'ourlet

Barboteuse A	84	85	86	88	89	91	93	94	95	97	cm
Combinaison B	147	149	150	151	152	152	154	155	156	157	

*avec sens **sans sens



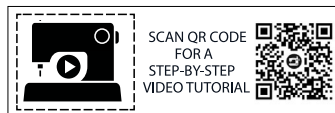
A



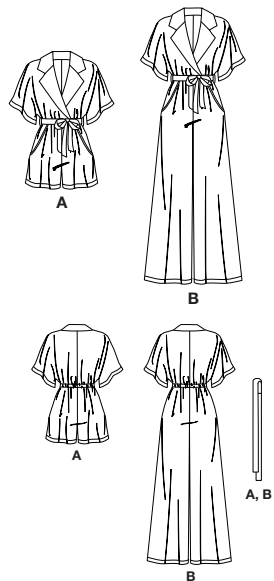
A, B



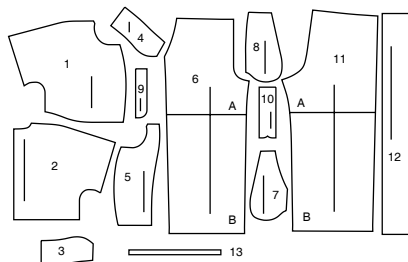
B



@brittanyjones

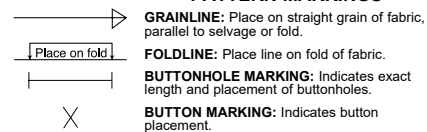


13 PATTERN PIECES



- 1 Bodice Front-A,B
- 2 Bodice Back-A,B
- 3 Upper Collar-A,B
- 4 Undercollar-A,B
- 5 Front Facing-A,B
- 6 Pants Front-A,B
- 7 Pocket Facing-A,B
- 8 Side Front and Pocket-A,B
- 9 Fly Facing-A,B
- 10 Fly-A,B
- 11 Pants Back-A,B
- 12 Sash-A,B
- 13 Elastic Guide A,B

PATTERN MARKINGS



NOTCHES AND SYMBOLS: For matching seams and construction details.

Indicates the Bustline, Waistline, Hip and/or Biceps. Measurements refer to circumference of Finished Garment (Body Measurement + Wearing Ease + Design Ease). Adjust pattern if necessary. The measurement excludes pleats, tucks, darts and seam allowances.

SEAM ALLOWANCE: 5/8" (1.5cm) included unless otherwise indicated, but not printed on tissue.

ADJUST IF NECESSARY

Lengthen or Shorten at adjustment lines (==) or where indicated on pattern. If substantial length is added, you may need to purchase additional fabric.

TO SHORTEN: Crease along adjustment line. Make a fold half the amount needed. Tape in place.

TO LENGTHEN: Slash between adjustment lines. Spread amount as needed, keeping edges parallel. Tape over paper.

When Alteration lines are not on tissue, lengthen or shorten at lower edge.

CUTTING AND MARKING

SHRINK FABRIC if not labeled pre-shrunk. Press.

CIRCLE LAYOUT for View, Size, Fabric Width.

Use **WITH NAP** layout for fabrics with one-way designs, nap, pile or surface shading. Because most knits have surface shading, a with nap layout is used.

For **DOUBLE THICKNESS (WITH FOLD)** - fold fabric with right sides together.

***DOUBLE THICKNESS (WITHOUT FOLD)** - For fabrics with nap, fold fabric crosswise, right sides together. Mark as shown. Cut along crosswise fold of fabric (A). Turn upper layer 180° so arrows go in same direction and place over lower layer, right sides together (B).

For **SINGLE THICKNESS** - place fabric right side up. (For Fur Flee fabrics, place pile side down.)

★ Cut other pieces first, allowing enough fabric to cut this piece. Open fabric. For "Cut 1" pieces, cut piece once on single layer of fabric with piece face up on right side of fabric.

Pattern may have cutting lines for several sizes. Select the proper cutting line or pattern pieces for your size.

Before **CUTTING** place all pieces on fabric according to layout. Pin. (Layouts show approximate position of pattern pieces; position may vary according to your pattern size.) Cut **ACCURATELY**, cutting notches outward.

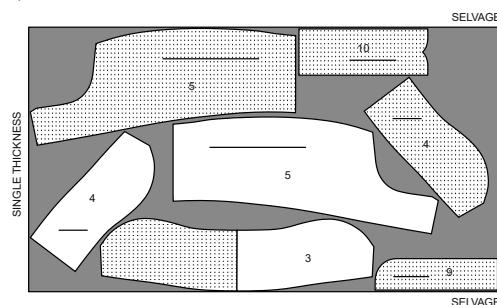
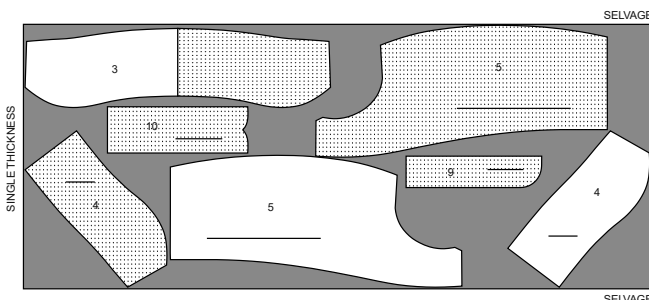
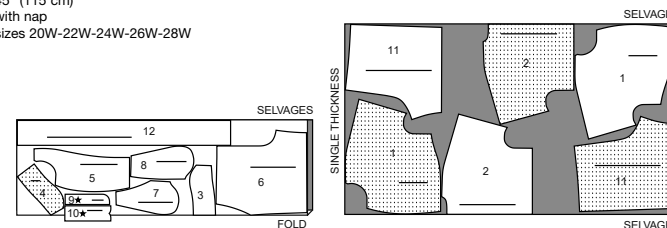
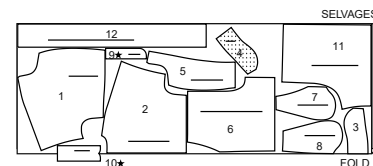
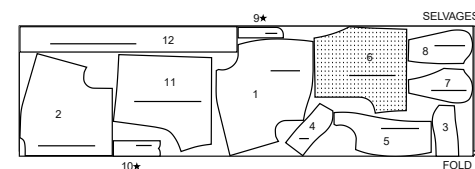
Before removing pattern, **TRANSFER MARKINGS** and lines of construction to Wrong Side of fabric, using the Pin and Chalk Pencil method or Tracing Paper and Dressmaker Wheel. Markings needed on right side of fabric should be thread traced.

NOTE: Broken-line boxes (a! b! c!) in layouts represent pieces cut by measurements provided.

CUTTING LAYOUTS

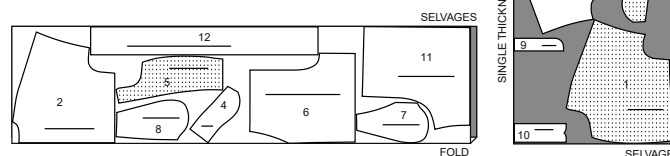
INTERFACING A,B

use pieces: 3 4 5 9 10

20" (51 cm)
sizes 10-12-14-16-1820" (51 cm)
sizes 20W-22W-24W-26W-28W45" (115 cm)
with nap
sizes 20W-22W-24W-26W-28W60" (150 cm)
with nap
sizes 10-12-14-16-1860" (150 cm)
with nap
sizes 20W-22W-24W-26W-28W

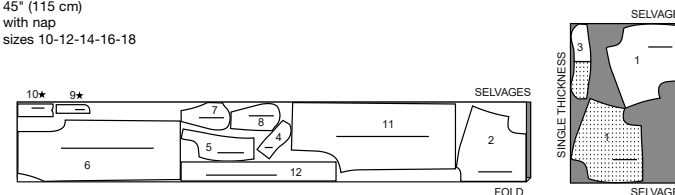
ROMPER A

use pieces: 1 2 3 4 5 6 7 8 9 10 11 12

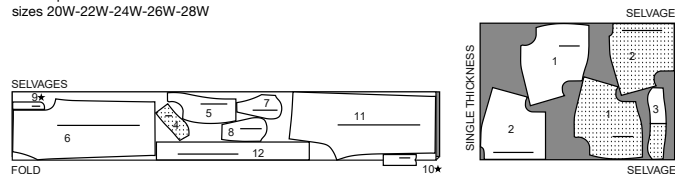
45" (115 cm)
with nap
sizes 10-12-14-16-18

JUMPSUIT B

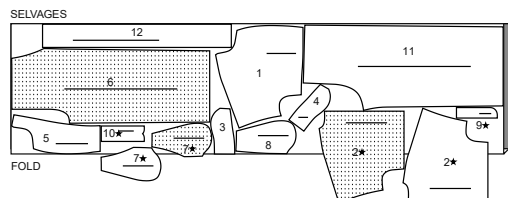
use pieces: 1 2 3 4 5 6 7 8 9 10 11 12

45" (115 cm)
with nap
sizes 10-12-14-16-18

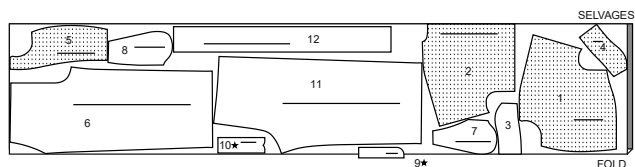
45" (115 cm)
with nap
sizes 20W-22W-24W-26W-28W



60" (150 cm)
with nap
sizes 10-12-14-16-18

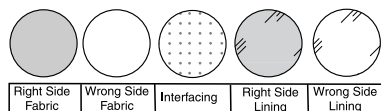


60" (150 cm)
with nap
sizes 20W-22W-24W-26W-28W



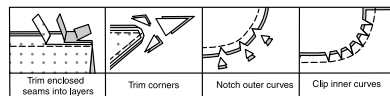
SEWING INFORMATION

FABRIC KEY



SEAM ALLOWANCES

Use 5/8" (1.5cm) seam allowances unless otherwise indicated.



PIN AND FIT

Pin or baste seams, **RIGHT SIDE TOGETHER**, matching notches. Fit garment before stitching major seams.

PRESS

Press seam allowances flat; then open unless otherwise stated. Clip where necessary so they lie flat.

GLOSSARY

Sewing terms appearing in **BOLD TYPE** in Sewing Instructions are explained below.

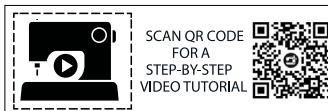
REINFORCE - Stitch along seamline where indicated in sewing instructions, using small machine stitches.

SLIPSTITCH - Slide needle through a folded edge, then pick up a thread of underneath fabric.

FINISH - Stitch 1/4" (6mm) from raw edge and finish with one of the following: (1) Pink OR (2) Overcast OR (3) Turn in along stitching and stitch close to fold OR (4) Overlock.

STAYSTITCH - Stitch 1/8" (3mm) from seamline in seam allowance (usually 1/2" (1.3cm) from raw edge).

UNDERSTITCH - Open out facing or underside of garment; stitch to seam allowance close to seam.



@brittanyjones

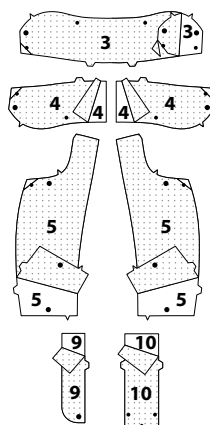
SEWING DIRECTIONS

NOTE: Under each sub-heading, the first view will be illustrated, unless otherwise illustrated.

ROMPER A, JUMPSUIT B

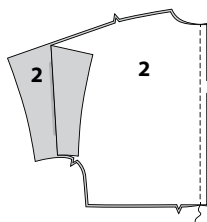
INTERFACING

1. Trim corners of **INTERFACING**, as shown. Fuse interfacing to wrong side of each matching **FABRIC** section, following manufacturer's instructions.

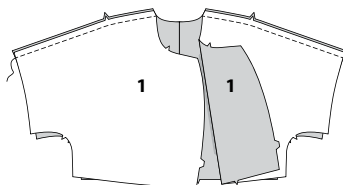


BODICE

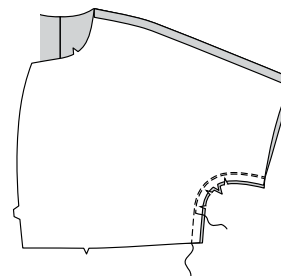
2. Pin **BODICE BACK** (2) sections, right sides together. Stitch center back seam.



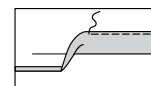
3. Pin **BODICE FRONT** (1) to bodice back at overarm seams; stitch.



4. Stitch front to back at underarm edges. Stitch again along previous stitching. Press seam allowances open, clipping where necessary.



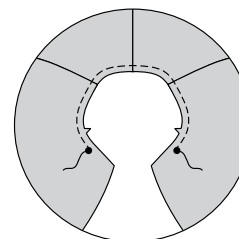
5. Turn up a 1-1/4" (3.2cm) hem on lower edge of sleeve. Turn under 1/4" (6mm) on raw edge. Stitch hem in place.



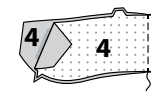
COLLAR AND FACING

COLLAR

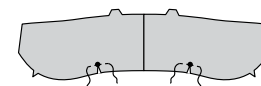
6. **STAYSTITCH** bodice neck edge between large dots.



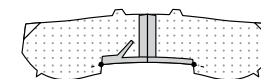
7. Stitch center back seam of **UNDER COLLAR** (4).



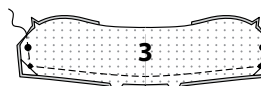
8. REINFORCE neck edge of under collar through small dots, as shown. Clip to small dots.



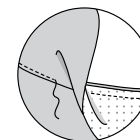
9. Turn under 5/8" (1.5cm) seam allowance between clips. Press. Trim pressed edge to 3/8" (1cm).



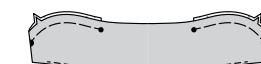
10. With right sides together, pin **UPPER COLLAR** (3) to under collar, matching notches, center backs and dots. Stitch double notched edge of collar between large dots, pivoting at small dots, easing upper collar to fit. Trim seams.



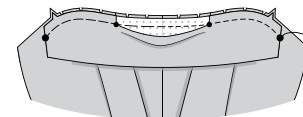
11. UNDERSTITCH upper edge of under collar as far as possible.



12. Turn collar right side out; press. Baste raw edges together.



13. Pin collar to neck edge, matching notches, center backs and dots, clipping bodice neck edge where necessary. Baste, keeping pressed edge free.

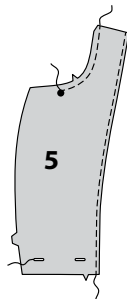


FACING

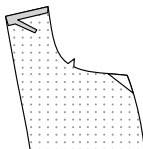
14. Make buttonholes on right FRONT FACING (5) at markings.

FINISH inner edge of each front facing.

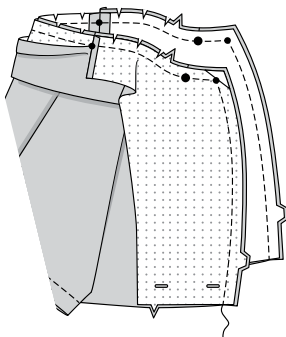
STAYSTITCH neck edge above large dot.



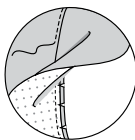
15. Press under 5/8" (1.5cm) on shoulder edge of front facing. Trim pressed edge to 3/8" (1cm).



16. Pin facing to front and neck edges, matching notches, center backs and dots, easing facing to fit and clipping facings neck edge where necessary. Stitch front and neck edges, keeping pressed edge of upper collar free. Clip neck (collar) seam allowance at ends of facings; trim seams.

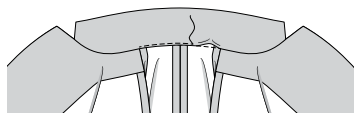


17. **UNDERSTITCH** front from upper edge to double notch.

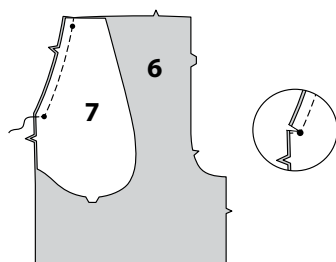


18. Turn facings to inside. Press seams toward collar between clips. Stitch close to pressed edge of upper collar, through all layers.

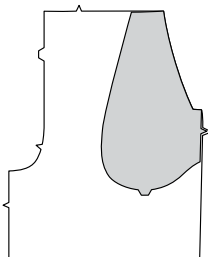
SLIPSTITCH pressed edge of facings over overarm seams.

**PANTS FRONT****POCKETS**

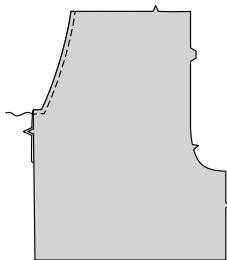
19. With right sides together, pin POCKET FACING (7) to PANTS FRONT (6), matching notches and dots. Stitch, pivoting across seam allowance at lower small dot. Clip diagonally to lower small dot. Trim seam.



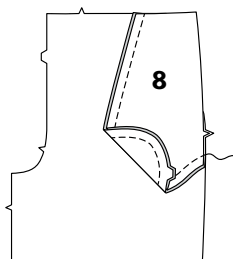
20. Turn pocket facing to inside; press.



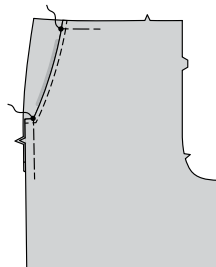
21. **TOPSTITCH** upper side edge of front.



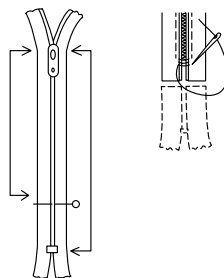
22. Stitch one SIDE FRONT AND POCKET (8) section to each pocket facing at outer edge, right sides together. Stitch, keeping pants front free. Press seamed edges together.



23. On OUTSIDE, lap pants front over side front and pocket, matching notches and dots, having raw edges even; pin. Baste across upper and side edges.

**ZIPPER, FLY AND FLY FACING**

24. NOTE: It may be necessary to shorten zipper. To make new zipper stop, place zipper along opening edge (with pull tab 1/8" (3mm) below seamline). Mark placement of new zipper stop. Whipstitch across teeth at marking. Cut zipper 3/4" (2cm) below the new stop.



25. A-Stitch front sections together at center front between large dot and notch.

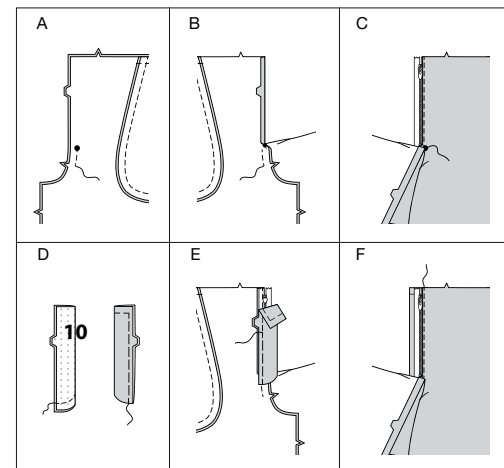
B-Turn in left front opening edge along foldline; press.

C-Place closed zipper (face up) under left front opening edge, having pressed edge close to zipper teeth and zipper stop at small dot. Using a zipper foot, baste close to pressed edge.

D-With right sides together, fold FLY (10) in half lengthwise. Stitch lower edge. Trim seam. Turn; press. Baste raw edges, matching notches.

E-On inside, pin fly to left front opening edge (over zipper), matching notches and small dots, having raw edges even. Baste along previous basting for zipper.

F-On outside, using a zipper foot, stitch close to pressed edge of front through all layers.



25a. G-FINISH outer edge of FLY FACING (9). Pin fly facing to right front opening edge, matching notches and large dots. Stitch, ending at large dot; trim.

UNDERSTITCH fly facing. Turn facing to inside; press.

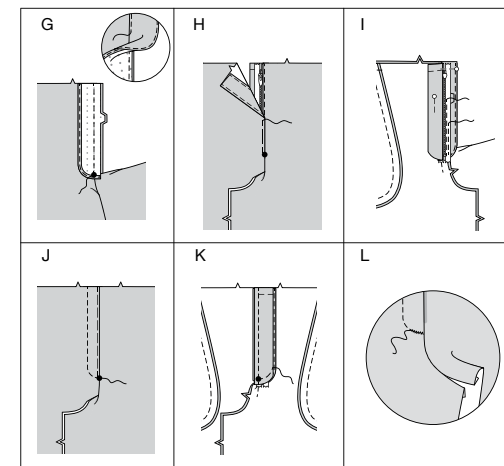
H-Lap right front over left, matching centers. Baste close to edge through all thicknesses.

I-Pin left fly out of the way. Open out fly facing. Pin remaining zipper tape to fly facing, keeping right front free. Using a zipper foot, stitch in place close to zipper teeth and along center of zipper tape.

J-Turn facing down. On outside, stitch right front along stitching line, keeping left fly free.

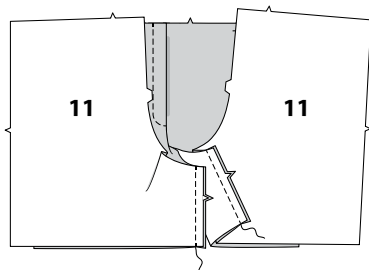
K-Turn fly back in place. On inside, hand tack fly and facing together at lower edge, as shown. Trim away excess zipper tape even with lower edge of fly, if needed.

L-If desired, on outside, machine-stitch a bar-tack across lower end of fly through all thicknesses.

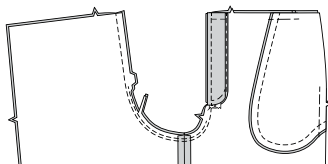


PANTS BACK AND REMAINING SEAMS

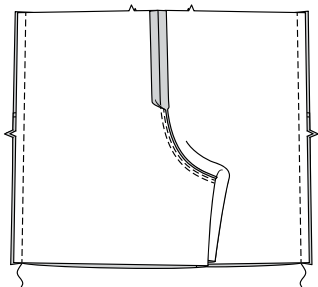
26. Stitch PANTS BACK (11) to pants front at inner leg.



27. Stitch remainder of crotch seam to notch in front, matching inside leg seams. Stitch again 1/4" (6mm) away in seam allowance between notches. Trim close to second stitching.

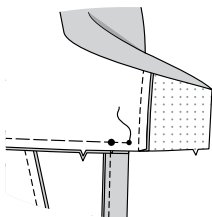
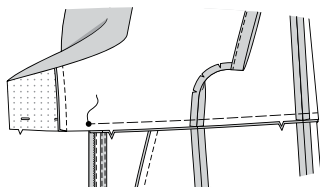


28. Stitch pants back to pants front at sides.

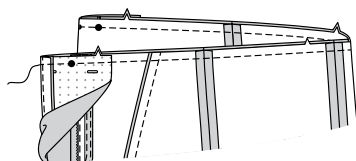


ATTACHING PANTS TO BODICE

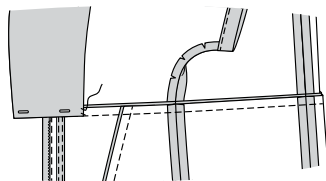
29. Open out lower edge of front facings. With right sides together, pin pants to bodice, matching notches, centers, side seams, large dots on right front and small dots on left front. Baste.



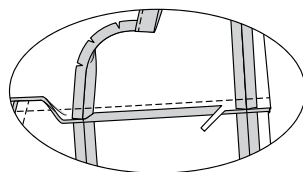
30. Turn lower edge of front facings to outside (over pants) along seam. Stitch waist seam.



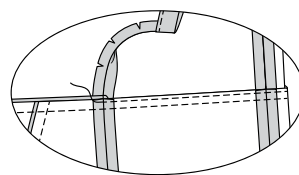
31. Turn front facings to inside again, turning seam allowances toward bodice. On inside, tack front facings to waist seams.



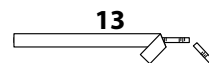
32. Open out and trim bodice back seam allowance to 1/4" (6mm) between side seams.



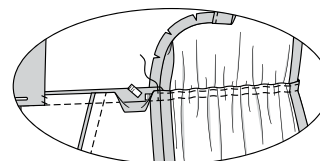
33. To form casing between side seams, press seams toward bodice again. Stitch 1/4" (6mm) from raw edge of pants seam allowance between side seams, through all thicknesses.



34. Cut elastic using ELASTIC GUIDE (13) pattern piece.



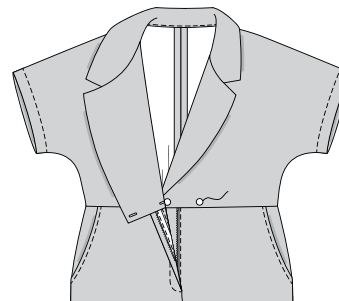
35. Insert elastic through back casing, having ends extending 5/8" (1.5cm) beyond side seams. Pin ends of elastic in place. Stitch across ends of elastic, through all thicknesses, catching in elastic. Stitch securely in place. Cut ends of elastic to within 1/4" (6mm) of stitching.



FINISHING

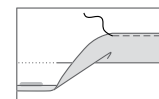
BUTTONS

36. Lap bodice right front over left, matching centers. Using buttonholes as guide, make button markings on bodice left front. Sew buttons at markings.



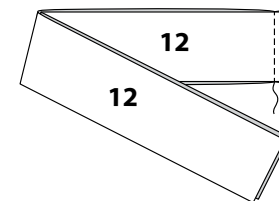
HEMS

37. Turn up a 1-1/4" (3.2cm) hem on lower edge of garment. Turn under 1/4" (6mm) on raw edge. Stitch hem in place.

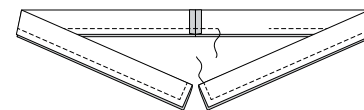


SASH

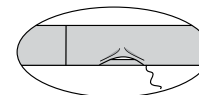
38. Stitch SASH (12) sections, right sides together along notched edge.



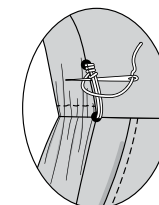
39. With right sides together, fold sash in half lengthwise. Stitch, leaving an opening for turning; trim seams.



40. Turn sash right side out; press. SLIPSTITCH opening edges together.



41. Make thread loop at bodice sides between small dots, large enough for sash to pass through.





Congrats!

You've completed your sewing adventure

SHARE YOUR LOOK



Post your pattern and tag us
@simplicity_creative_group and **#knowMepatterns**
for a chance to be featured on our social media.

Look for more PDF patterns at **simplicity.com**

Have a question or need help with your sewing project call us at
1-800-782-0323

