

DONNY Q
knowME
BY mmmg

ME2056

BIN #17



Scan QR code for a Sew-Along video tutorial.



@_donnyQ

Designed and printed in USA

Average

MEN'S SHIRT AND PANTS

Suggested Fabrics: A: Cotton Blends, Linen Blends, Poplin, Ripstop Nylon. **Contrast A, B:** Mesh. **B:** Chino, Cotton Blends, Lightweight Twill, Linen Blends, Ripstop Nylon. **Interfacing:** Lightweight Fusible.

Notions: A: Eight $\frac{5}{8}$ " (1.5cm) buttons, one 2" (5cm) length of 1" (2.5cm) hook and loop tape.
B: One 9" (23cm) zipper (cut to fit), one $\frac{5}{8}$ " (1.5cm) button, two 18" (46cm) invisible zippers (cut to fit).

Sizes	34	36	38	40	42	44	46	48	50	52
BODY MEASUREMENTS: Select pattern size based on body measurements										
Chest	34	36	38	40	42	44	46	48	50	52
Waist	28	30	32	34	36	39	42	44	46	48
Hip	35	37	39	41	43	45	47	49	51	53

Shirt A	45**	2½	2½	2½	2½	2½	2½	2½	2½	2½	Yds.
	60**	1½	1½	1½	1½	1½	1½	2	2	2	"
Contrast (Yoke Back Lining, Gussets)											
	45"/60**	½	½	½	¾	¾	¾	¾	¾	¾	Yds.

Interfacing	20"	¾	¾	¾	¾	¾	¾	¾	¾	¾	"
--------------------	-----	---	---	---	---	---	---	---	---	---	---

Pants B	45**	2½	2½	2½	2½	2½	2½	2½	2½	2½	Yds.
	60**	1½	1½	2	2	2	2½	2½	2½	2½	"

Contrast (Side Insets) - 45"/60 - ½ yd.**

Interfacing 20" - 1½ yd.

FINISHED GARMENT MEASUREMENTS (Includes Design and Wearing Ease)

A Chest 42½ 44½ 46½ 48½ 50½ 52½ 54½ 56½ 58½ 60½ Ins.

A Waist 42 44 46 48 50 52 54 56 58 60 "

B Hip 37½ 39½ 41½ 43½ 45½ 47½ 49½ 51½ 53½ 55½ "

Width, each leg

Pants B 12½ 13 13½ 14 14½ 15 15½ 16 16½ 17 Ins.

Finished back length from base of neck

Shirt A 25¼ 25½ 25¾ 26 26¼ 26½ 26¾ 27 27¼ 27½ Ins.

Finished side length from waist

Pants B 40¾ 41 41¼ 41½ 41¾ 42 42¼ 42½ 42¾ 43 Ins.

*with nap **without nap

Moins Facile

CHEMISE ET PANTALON POUR HOMMES

Tissus Conseillés: A : Cotonnades, Toiles de lin mélangés, Popeline, Nylon indéchirable. **Contraste A, B :** Tissus à mailles. **B :** Chino, Cotonnades, Twill léger, Toiles de lin mélangés, Nylon indéchirable. **Entoilage :** thermocollant léger.

Mercerie: A : 8 boutons de 1.5 cm, 5 cm de ruban autoagrippant de 2.5 cm. **B :** 1 fermeture à glissière de 23 cm (à ajuster), 1 bouton de 1.5 cm, 2 fermetures à glissière invisible de 46 cm (à ajuster).

Tailles	34	36	38	40	42	44	46	48	50	52
MESURES DU CORPS: Choisissez la taille du patron basée sur les mesures du corps										
Poitrine	87	92	97	102	107	112	117	122	127	132
Taille	71	76	82	87	92	99	107	112	117	122
Hanches (23cm au-dessous de la taille)	89	94	99	104	109	115	119	124	128	135

Chemise A	115cm*	1.9	1.9	1.9	2.1	2.1	2.2	2.4	2.4	2.4	m
	150cm*	1.4	1.4	1.5	1.5	1.5	1.5	1.8	1.8	1.8	"

Contraste (Doublure d'empècement dos, Soufflets)

	115cm/150cm*	0.5	0.5	0.5	0.5	0.6	0.6	0.6	0.6	0.6	m
Entoilage	51cm	0.7	0.7	0.7	0.7	0.7	0.7	0.7	0.8	0.8	"

Pantalon B	115cm*	2.3	2.3	2.3	2.4	2.5	2.9	2.9	2.9	2.9	m
	150cm*	1.7	1.7	1.7	1.7	1.8	2.2	2.2	2.2	2.3	"

Contraste (Incrustations du côté) - 115cm/150cm* - 0.6m

Entoilage 51cm - 1.0m

MESURES DES VÊTEMENTS FINI (Motif et aisance de port compris)

A Poitrine 108 113 118 123 128 133 138 144 149 154 cm

A Taille 107 112 117 122 127 132 137 142 147 152 "

B Hanches 95 100 105 110 116 121 126 131 136 141 "

Largeur, chaque jambe

Pantalon B 32 33 34 36 37 38 39 41 42 43 cm

Longueur finie – dos, votre nuque à l'ourlet

Chemise A 64 65 65 66 67 67 68 69 69 70 cm

Longueur finie – côté, taille à l'ourlet

Pantalon B 104 104 105 105 106 107 107 108 109 109 cm

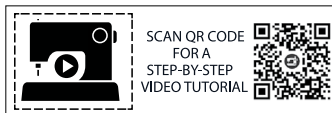
*avec sens **sans sens



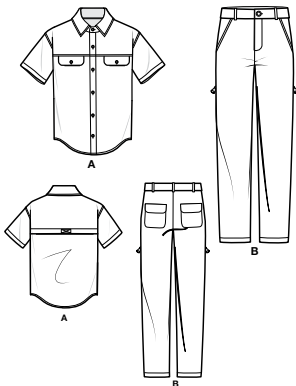
A



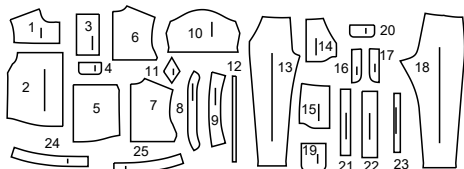
B



@_donnyQ

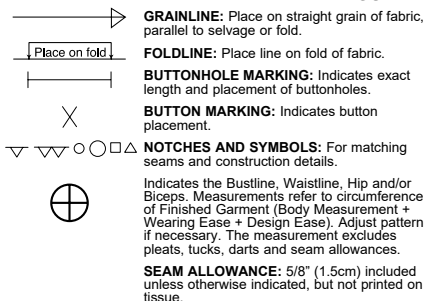


25 PATTERN PIECES

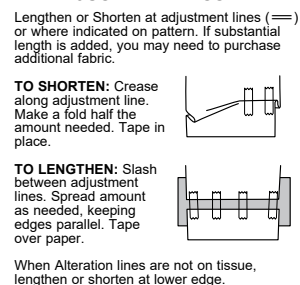


- 1 Yoke Front-A
- 2 Front-A
- 3 Pocket-A
- 4 Flap-A
- 5 Back-A
- 6 Yoke Back Lining-A
- 7 Yoke Back-A
- 8 Collar Band-A
- 9 Collar-A
- 10 Sleeve-A
- 11 Gusset-A
- 12 Guide for Buttonholes-A
- 13 Front-B
- 14 Pocket Facing-B
- 15 Side Front and Pocket-B
- 16 Right Fly-B
- 17 Left Fly Facing-B
- 18 Back-B
- 19 Back Pocket-B
- 20 Flap-B
- 21 Side Facing-B
- 22 Side Inset-B
- 23 Carriers-B
- 24 Right Waistband-B
- 25 Left Waistband-B

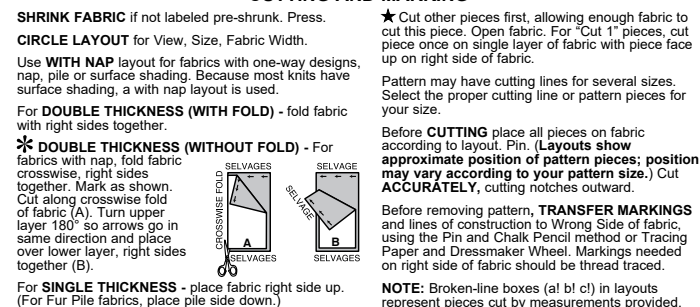
PATTERN MARKINGS



ADJUST IF NECESSARY



CUTTING AND MARKING



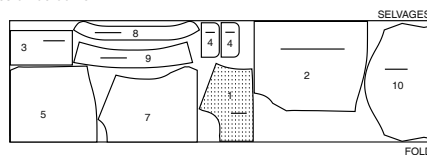
CUTTING LAYOUTS

RIGHT SIDE OF PATTERN	WRONG SIDE OF PATTERN	RIGHT SIDE OF FABRIC	WRONG SIDE OF FABRIC

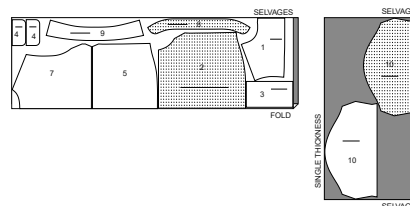
SHIRT A

use pieces: 1 2 3 4 5 7 8 9 10

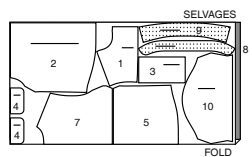
45" (115 cm)
with nap
sizes 34 36 38 40 42 44



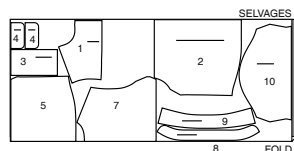
45" (115 cm)
with nap
sizes 46 48 50 52



60" (150 cm)
with nap
sizes 34 36 38 40 42 44 46



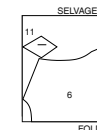
60" (150 cm)
with nap
sizes 48 50 52



CONTRAST A (Yoke Back Lining, Gussets)

use pieces: 6 11

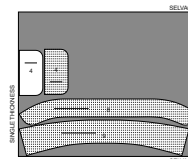
45", 60" (115 cm, 150 cm)
with nap
all sizes



INTERFACING A

use pieces: 4 8 9

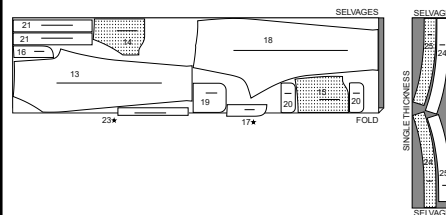
20" (51 cm)
without nap
all sizes



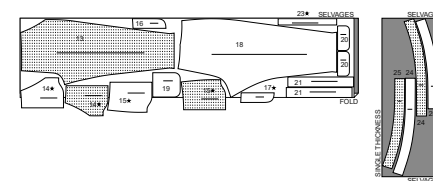
PANTS B

use pieces: 13 14 15 16 17 18 19 20 21 23 24 25

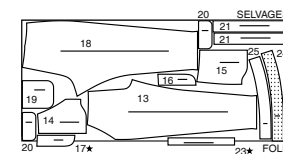
45" (115 cm)
with nap
sizes 34 36 38 40 42



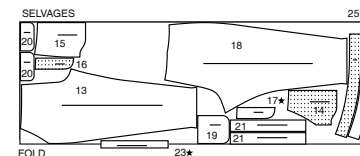
45" (115 cm)
with nap
sizes 44-46-48-50-52



60" (150 cm)
with nap
sizes 34 36 38 40 42



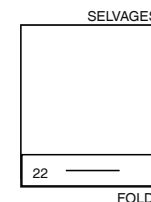
60" (150 cm)
with nap
sizes 44 46 48 50 52



CONTRAST B (Side Insets)

use pieces: 22

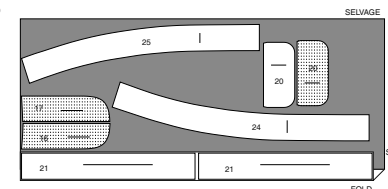
45", 60" (115 cm, 150 cm)
with nap
all sizes



INTERFACING B

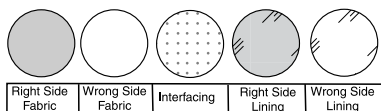
use pieces: 16 17 20 21 24 25

20" (51 cm)
without nap
all sizes



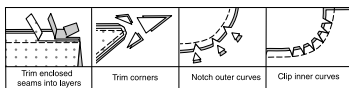
SEWING INFORMATION

FABRIC KEY



SEAM ALLOWANCES

Use 5/8" (1.5cm) seam allowances unless otherwise indicated.



PIN AND FIT

Pin or baste seams, **RIGHT SIDE TOGETHER**, matching notches. Fit garment before stitching major seams.

PRESS

Press seam allowances flat; then open unless otherwise stated. Clip where necessary so they lie flat.

GLOSSARY

Sewing terms appearing in **BOLD TYPE** in Sewing Instructions are explained below.

EDGE STITCH - Stitch close to finished edge or seam.

FINISH - Stitch 1/4" (6mm) from raw edge and finish with one of the following: (1) Pink OR (2) Overcast OR (3) Turn in along stitching and stitch close to fold OR (4) Overlock.

SLIPSTITCH - Slide needle through a folded edge, then pick up a thread of underneath fabric.

STAYSTITCH - Stitch 1/8" (3mm) from seamline in seam allowance (usually 1/2" (1.3cm) from raw edge).

TOPSTITCH - On outside, stitch 1/4" (6mm) from edge, seam or previous stitching, using presser foot as guide, or stitch where indicated in instructions.

UNDERSTITCH - Open out facing or underside of garment; stitch to seam allowance close to seam.



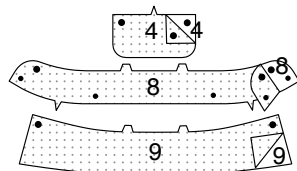
SCAN QR CODE
FOR A
STEP-BY-STEP
VIDEO TUTORIAL

@_donnyQ

SHIRT A

INTERFACING

1. Pin Interfacing to wrong side of each matching fabric section. Fuse, following manufacturer's instructions.



FRONT

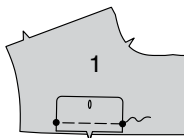
2. For each side, stitch two **FLAP** (4) sections together, leaving notched edge open. Trim.



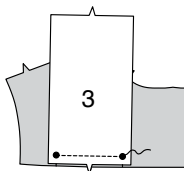
3. Turn. Press. Baste raw edges. Make buttonhole in flap at marking



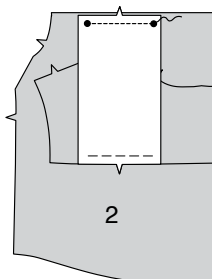
4. Pin flap to lower edge of **YOKE FRONT** (1), matching large dots and notches, having raw edges even. Baste.



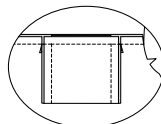
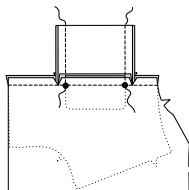
5. With right sides together, pin upper edge of **POCKET** (3) to lower edge of yoke front, over flap, matching notches. Stitch between large dots.



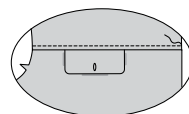
6. With right sides together, pin lower edge of pocket to upper edge of **FRONT** (2), matching notches. Stitch between large dots.



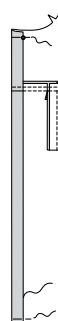
7. With right sides together, pin yoke front to front, matching large dots and foldlines. Stitch, leaving open between large dots, keeping pocket edges free. Clip front seam allowances at pocket edges. Fold pocket along foldline. Stitch pocket edges together. Press seam up, pressing pocket and flap toward front.



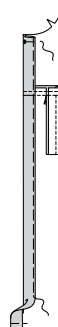
8. **TOPSTITCH** front seam.



9. Turn front opening edge to inside along outer foldline; press. Baste raw edges together. Sew invisibly along inner edge.



10. For self facing, turn front opening edge to inside again along remaining foldline; press. Baste raw edges together and close to inner edge.

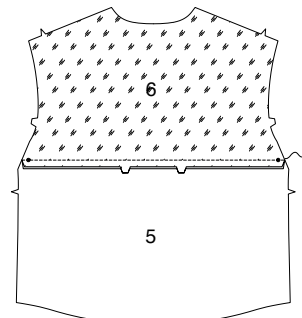


11. **TOPSTITCH** front along inner basting.

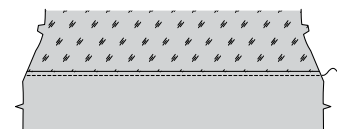


BACK AND SLEEVE

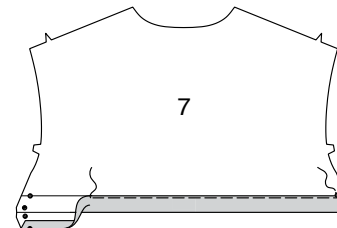
12. Pin **YOKE BACK LINING** (6) to upper edge of **BACK** (5), matching centers and notches. Stitch. Press seam down.



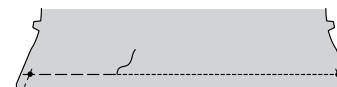
13. **TOPSTITCH** back seam.



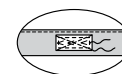
14. Turn in seam allowance on lower edge of **YOKE BACK** (7). Press. Turn lower edge of yoke back to inside along foldline. Press. Baste side edges and close to inner edge.



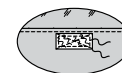
15. On outside, stitch yoke back along stitching line.



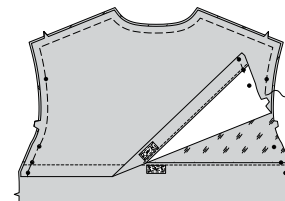
16. Cut hook and loop tape 1" (2.5cm) long. On inside center hook section of fastener tape over lower edge of yoke back, between stitching and fold, as shown. Stitch in place along outer edges and diagonally across center, as shown.



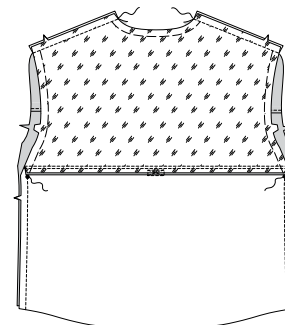
17. On outside, center loop section of fastener tape over upper edge of back, as shown. Stitch in place along outer edges and diagonally across center.



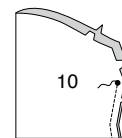
18. With right sides up, lap yoke back over back and lining, matching centers and small dots, having raw edges even. Baste.



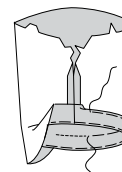
19. Stitch fronts to back at shoulders. Stitch fronts to back at sides, leaving open above lower small dots, as shown.



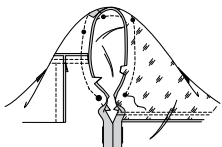
20. Stitch **SLEEVE** (10) seam, leaving open above lower large dots.



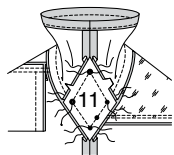
21. Turn up sleeve hem. Baste close to fold. Turn in 1/4" (6mm) on raw edge. Baste hem in place close to upper edge. Press. **TOPSTITCH** hem along upper basting.



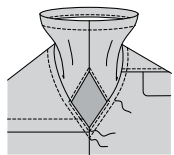
22. With right sides together, pin sleeve to armhole edge, placing upper center small dot at shoulder seam. Baste. Stitch between lower small dot on back and upper large dot on front. Press seam allowances flat. Turn seam toward top.



23. With right sides together, pin GUSSET (11) to under arm and side edges, matching symbols. Stitch, breaking stitching at upper, lower and side dots, as shown. Press seams toward top and sleeve.

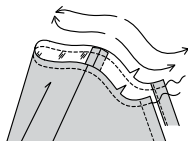


24. EDGESTITCH top and sleeve around gussets, as shown.
TOPSTITCH armhole seams.

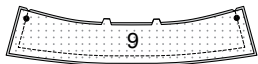


COLLAR AND FINISHING

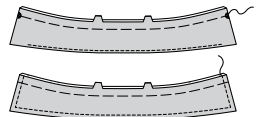
25. STAYSTITCH neck edge.



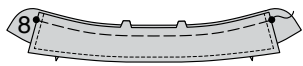
26. With right sides together, pin COLLAR (9) sections together, matching centers. Stitch, leaving notched edge open. Trim. For facing, **UNDERSTITCH** interfaced collar.



27. Turn. Press. Baste raw edges.
TOPSTITCH finished edges.



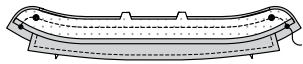
28. Pin collar to right side of uninterfaced COLLAR BAND (8) section, facing side down, matching centers and large dots. Baste.



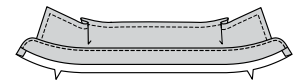
29. For facing, turn in seam allowance on lower edge of interfaced collar band section. Press, easing in fullness if necessary. Trim pressed seam allowance to 3/8" (1cm).



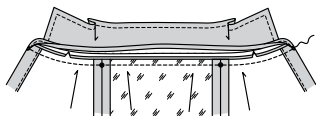
30. With right sides together, pin collar band facing to collar band, over collar, matching centers and symbols. Stitch, leaving lower edge open. Trim. **UNDERSTITCH** facing.



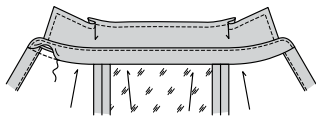
31. Turn. Press.



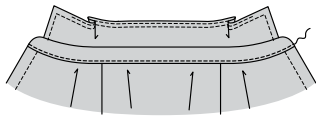
32. Pin collar band and collar to neck edge, matching centers, placing inner small dots at shoulder seams, matching remaining small dots, clipping neck edge where necessary. Baste. Stitch. Trim. Press seam toward collar band.



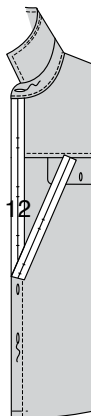
33. SLIPSTITCH pressed edge over seam.



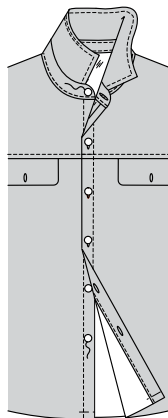
34. EDGESTITCH lower edge of collar band.



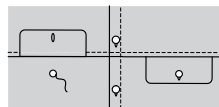
35. Place GUIDE FOR BUTTONHOLES (12) on left front, having edges of tissue even with finished edges of shirt, as shown. Transfer markings. Make buttonholes at markings. Make buttonhole in collar band at marking.



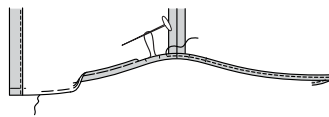
36. Lap opening edges, as shown, matching centers. Using buttonholes as guides, make button markings on right front. Sew buttons at markings. Sew button to collar band at small dot.



37. Using flaps as guides, make button markings on front. Sew buttons to front at markings.



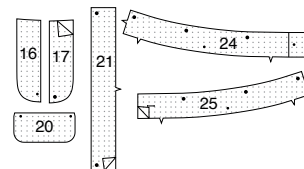
38. Stitch 1/4" (6mm) from lower edge of shirt, using long machine stitches. Turn up 5/8" (1.5cm) hem, turning in 1/4" (6mm) on raw edge. Pull thread to ease in fullness. Stitch. Press.



PANTS B

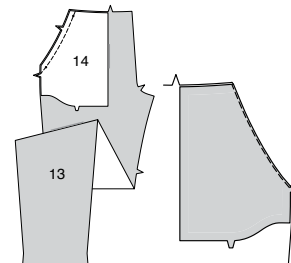
INTERFACING

1. Pin INTERFACING to wrong side of each matching FABRIC section. Fuse, following manufacturer's instructions.

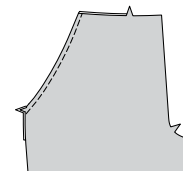


FRONT

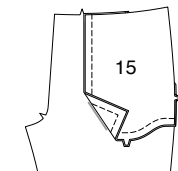
2. With right sides together, pin POCKET FACING (14) to upper side edge of front, matching notches and small dots. Stitch. Trim. **UNDERSTITCH** pocket facing.



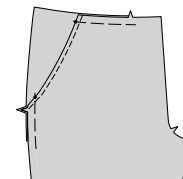
3. Turn pocket to inside. Press. **TOPSTITCH** pocket seam.



4. Open out pocket facing. With right sides together, pin SIDE FRONT AND POCKET (15) to pocket facing, matching notches. Stitch front and lower edges together.



5. Turn in pocket facing and pocket, matching small dots. Baste upper and side edges.



6. Construct fly front as follows:

A- Stitch front sections together at center front between large dot and notch.

B- Turn in right front opening edge along foldline; press.

C- Place closed zipper (face up) under right front opening edge, having pressed edge close to zipper teeth and zipper stop at small dot. Using a zipper foot, baste close to pressed edge.

D- Stitch RIGHT FLY (16) sections together along outer unnotched edge, as shown. Turn. Press. Baste raw edges.

E- On inside, pin right fly to right front opening edge (over zipper), matching notches and small dots, having raw edges even. Baste along previous basting for zipper.

F- On outside, using a zipper foot, stitch close to pressed edge of front through all layers.

G-FINISH outer edge of LEFT FLY FACING (17). Pin fly facing to left front opening edge, matching large dots. Stitch, ending at large dot. Trim. **UNDERSTITCH** fly facing. Turn facing to inside.

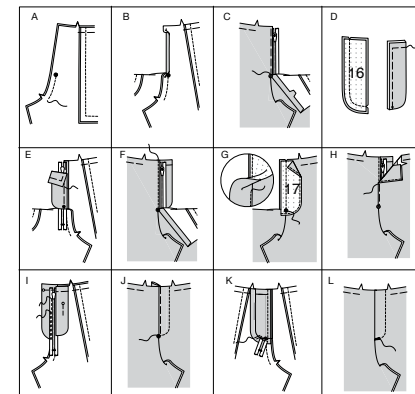
H- Lap left front over right, matching centers. Baste close to edge through all thicknesses.

I- Pin right fly out of the way. Open out fly facing. Pin remaining zipper tape to left fly facing, keeping left front free. Using a zipper foot, stitch in place close to zipper teeth and along center of zipper tape.

J- Turn left fly facing down. On outside, stitch left front along stitching line, keeping right fly free.

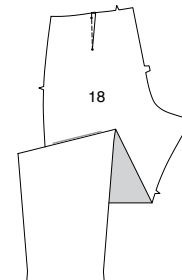
K- Turn right fly back in place. On inside, hand tack fly and facing together at lower edge, as shown. Trim away excess zipper tape even with lower edge of fly, if needed.

L- If desired, on outside, machine-stitch a bar tack across lower end of fly through all thicknesses.

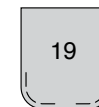


BACK AND SIDES

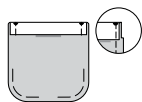
7. Stitch dart in BACK (18). Press toward center.



8. Stitch curved edges of BACK POCKET (19) 3/8" (1cm) from raw edge, using long machine stitches, as shown.



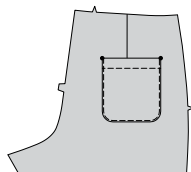
9. Turn upper edge to outside along foldline; stitch ends. Trim.



10. Turn upper edge of pocket to inside, turning in seam allowances on remaining edges; pull threads to ease in fullness on curves. Press. Baste close to inner pressed edge.



11. **TOPSTITCH** along basting. Pin pocket to back, matching symbols. **EDGE STITCH** side and lower edges.



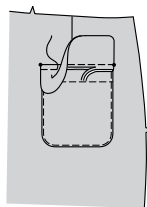
12. For each side, stitch one interfaced and one uninterfaced **FLAP** (20) section together, leaving upper edge open. Trim.



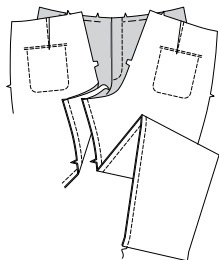
13. Turn. Press. Baste raw edges.



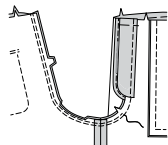
14. Pin flap to back, placing 3/8" (1cm) seamline along flap line, matching symbols. Stitch. Trim flap seam allowance to a scant 1/4" (6mm), being careful not to cut back. Turn flap down. Press. **TOPSTITCH** upper edge of flap.



15. Stitch front and back together at inner leg edge, stretching back to fit.



16. Stitch crotch seam, connecting to previous stitching in front. Stitch again 1/4" (6mm) away in seam allowance along curve. Trim close to second stitching.



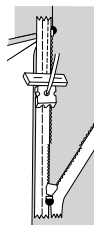
17. Stitch front to back at sides, leaving open below upper large dots.



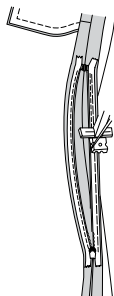
NOTE: The zipper is longer than the zipper opening and will be adjusted after the zipper is inserted.

NOTE: Stitch the invisible zipper using an invisible zipper foot.

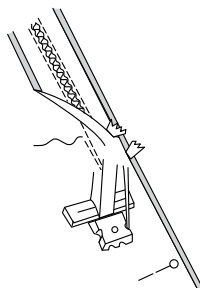
18. Open the zipper and press the tape using a cool iron. On **OUTSIDE**, pin **RIGHT** side of the zipper face down on the **RIGHT** side of the zipper opening. Have the coil along the seam line, the tape within the seam allowance and the top stop at upper large dot, as shown. Hand-baste along center of the tape. Position zipper foot at the top of the zipper with **RIGHT** groove of the foot over coil. Stitch along tape to lower large dot, keeping pants free. Back-stitch to reinforce.



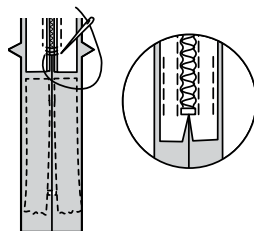
19. Pin the remaining half of the zipper to the **LEFT** side of the zipper opening in same manner. Hand-baste along the center of the tape. Position zipper foot at the top of the zipper with **LEFT** groove over the coil. Stitch along tape to lower notch, keeping pants free. Back-stitch to reinforce.



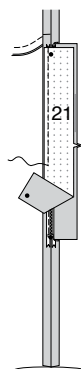
20. Close zipper and check that it is invisible from the **OUTSIDE**. Pull the free ends of the zipper tape away from the seam allowance. Pin remaining side seam together below zipper. Position zipper foot all the way to the **LEFT** so the needle goes down through the outer notch of the foot. Start stitching seam 1/4" (6mm) above lowest stitch and slightly to the **LEFT**. Stitch seam for about 3" (7.5cm). Stitch remainder of seam using your regular presser foot.



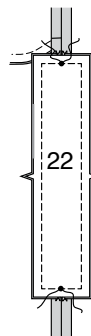
21. If the zipper is longer than the opening, using a strong thread, hand-sew a few small stitches across ends of coils at end of opening. Trim away lower end of zipper tape to within 5/8" (1.5cm) of hand-stitches. If you prefer, open out each seam allowance at ends of zipper and stitch tape to seam allowance.



22. Open out side seam allowances. For each side, with right sides together, pin one **SIDE FACING** (21) section, interfacing side up, to zipper opening edges, matching large dots. Stitch between large dots, using a zipper foot, keeping pants free.

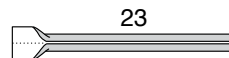


23. Press facings away from zipper. Pin **SIDE INSET** (22) to side facings, matching notches and large dots. Stitch outer edges, keeping pants free, breaking stitching at large dots.

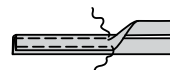


CARRIERS, WAISTBAND AND FINISHING

24. Turn in 1/4" (6mm) on long edges of **CARRIERS** (23); press.



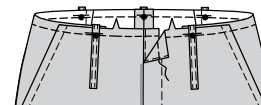
25. With wrong sides together, fold carriers in half lengthwise, having edges even; press. **EDGE STITCH**, as shown.



26. Cut carriers into five sections, each 3 1/4" (8.26cm) long..

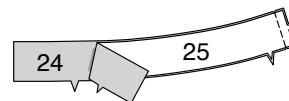


27. **EDGE STITCH** upper edge of pants. Pin carriers to upper edge of pants, centering one end over large dots, having raw edges even. Baste along waist seamline.

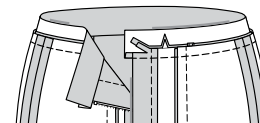


28. Stitch uninterfaced **LEFT WAISTBAND** (25) section to uninterfaced **RIGHT WAISTBAND** (24) at center back.

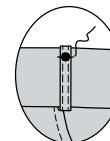
NOTE: Interfaced left and right waistband sections will be used as facing.



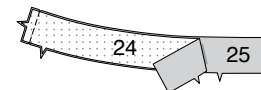
29. Pin waistband to upper edge of pants, matching centers, placing small dots at side seams, clipping pants where necessary. Baste. Stitch. Trim. Press seam toward waistband.



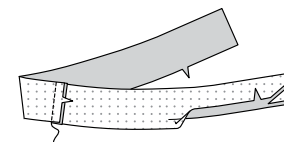
30. Turn up carriers over waistband, centering remaining end over large dots, having raw edges even. Baste



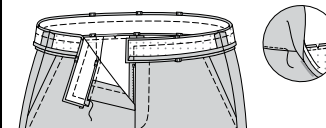
31. Stitch left waistband **FACING** (25) and right waistband **FACING** (24) sections together at center back..



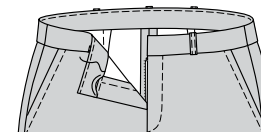
32. Turn in seam allowance on lower edge of waistband facing. Press, easing in fullness where necessary. Trim pressed seam allowance to 3/8" (1cm).



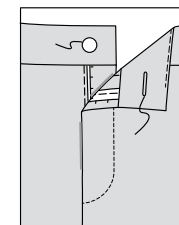
33. Pin waistband facing to waistband, matching centers and seams. Stitch upper and front edges. Trim. **UNDERSTITCH** facing.



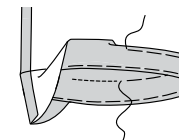
34. Turn facing to inside. Press. **SLIPSTITCH** pressed edge over seam.



35. Make buttonhole in left waistband at marking. Sew button to right waistband at small dot.



36. Turn up pants hem. Baste close to fold. Turn in 1/4" (6mm) on raw edge. Baste hem in place close to upper edge. Press. **TOPSTITCH** hem along upper basting.





Congrats!

You've completed your sewing adventure

SHARE YOUR LOOK



Post your pattern and tag us
@simplicity_creative_group and **#knowMepatterns**
for a chance to be featured on our social media.

Look for more PDF patterns at **simplicity.com**

Have a question or need help with your sewing project call us at
1-800-782-0323



KnowMe ©2023 a division of IG Design Group Americas Inc. • Atlanta, GA 30342 USA www.thedesigngroup.com • All Rights Reserved. www.mccall.com • Made in the U.S.A. Fabriqué aux États-Unis.
To be used for individual private home use only and not for commercial or manufacturing purposes. • A usage privé seulement et non à des fins commerciales ou de production en série. • Para uso privado solamente, no se puede utilizar con propósitos de comercialización o de producción en serie.