

BEAUTE' J'ADORE  
**knowME**  
BY mimi g

ME2052

BIN #B



Scan QR code for a Sew-Along video tutorial.



@beutejadore

To customize your look like beutejadore - See Sew Along Video.



Designed and printed in USA

Average

**MISSES' SHIRT AND PANTS**

**Suggested Fabrics:** A, B: Cotton Blends, Linen Blends. **A also in:** Batiste, Chambray, Cotton Lawn, Gauze, Gingham, Poplin. **B also in:** Chino, Denim, Microsuede, Stretch Wovens, Twill. **Lining B:** Cotton Blends, Polyester Blends. **Interfacing:** Lightweight Fusible.

**Notions:** A: Twelve ½" (1.3cm) buttons. B: One 7" (18cm) zipper (adjust to fit), six studs or rivets (optional), one ¾" (1.5cm) button.

Sizes	8	10	12	14	16	18	20	22	24	26
European	34	36	38	40	42	44	46	48	50	52

**BODY MEASUREMENTS: Select pattern size based on body measurements**

Bust	31½	32½	34	36	38	40	42	44	46	48	Ins.
Waist	24	25	26½	28	30	32	34	37	39	41	"
Hip-9" below waist	33½	34½	36	38	40	42	44	46	48	50	"
Back-neck to waist	15¾	16	16¼	16½	16¾	17	17¼	17½	17¾	18	"

Shirt A	45**	3	3	3	3½	3¼	3¾	3½	3½	3½	Yds.
60**	2	2	2½	2½	2¾	2¾	2¾	2¾	2½	2½	"

**Interfacing A** 20"- 1¼ yds.

Pants B	45**	2½	2½	2½	2½	3¼	3¼	3¼	3¼	3¾	Yds.
60**	1¾	1¾	1¾	2	2¾	2¾	2¾	2¾	2½	2½	"

**Lining B** 45\*\* - ¾ yd.

**Interfacing B** 20" - ¾ yd.

**FINISHED GARMENT MEASUREMENTS (Includes Design and Wearing Ease)**

A Bust	48½	49½	51	53	55	57	59	61	63	65	Ins.
A Waist	47½	48½	50	52	54	56	58	60	62	64	"
B Waist	25½	26½	28	30	32	34	36	38	40	42	"
B Hip	39	40	41½	43½	45½	47½	4½	51½	53½	55½	"
<b>Width, lower edge</b>											
Shirt A	47	48	49½	51½	53½	55½	57½	59½	61½	63½	Ins.
<b>Width, each leg</b>											
Pants B	19¾	20	20½	21	21½	22	22½	23	23½	24	Ins.
<b>Finished back length from base of neck</b>											
Shirt A	30¾	31	31¼	31½	31¾	32	32¼	32½	32¾	33	Ins.
<b>Finished side length from waist</b>											
Pants B	35¾	36	36¼	36½	36¾	37	37¼	37½	37¾	38	Ins.

\*with nap \*\*without nap

Moins facile

**CHEMISE ET PANTALON POUR JEUNES FEMMES**

**Tissus Conseillés:** A, B: Cotonnades, Lins mélangés. **A aussi en:** Batiste, Chambray, Linon de coton, Gaze, Vichy, Popeline. **B aussi en:** Chino, Denim, Microfibre, Tissus tissés extensibles, Twill. **Double B:** Cotonnades, Tissus mélangés de polyester. **Entoilage:** Thermocollant léger.

**Mercurie:** A: 12 boutons de 1.3cm. B: 1 fermeture à glissière de 18 cm (à ajuster), 6 clous décoratifs ou rivets (facultatif), 1 bouton de 1.5cm.

Tailles	8	10	12	14	16	18	20	22	24	26
Françaises	36	38	40	42	44	46	48	50	52	54
Européen	34	36	38	40	42	44	46	48	50	52

**MESURES DU CORPS: Choisissez la taille du patron basée sur les mesures du corps**

Poitrine	80	83	87	92	97	102	107	112	117	122	cm
Taille	61	64	67	71	76	81	87	94	99	104	"

**Hanches (23cm au-dessous de la taille)**

	85	88	92	97	102	107	112	117	122	127	cm
--	----	----	----	----	-----	-----	-----	-----	-----	-----	----

**Dos du cou à la taille** 40 40.5 41.5 42 42.5 43 44 44.5 45 46 "

Chemise A	115cm*	2.7	2.7	2.7	2.7	2.9	3.1	3.1	3.1	3.2	3.2	m
150cm*	1.8	1.8	1.8	2.2	2.2	2.2	2.2	2.2	2.2	2.3	2.3	"

**Entoilage A** 51cm- 1.1m

Pants B	115cm*	2.3	2.3	2.3	2.3	2.9	2.9	3.0	3.0	3.0	3.1	m
150cm*	1.7	1.7	1.7	1.8	2.1	2.2	2.2	2.2	2.2	2.2	2.3	"

**Double B** 115cm\*- 0.3m

**Entoilage B** 51cm- 0.7m

**MESURES DES VÊTEMENTS FINI (Motif et aisance de port compris)**

A Poitrine	123	126	130	135	140	145	150	155	160	165	cm
A Taille	121	123	127	132	137	142	147	152	157	163	"
B Taille	65	67	71	76	81	86	91	97	102	107	"
B Hanches	99	102	105	110	116	121	126	131	136	141	"
<b>Largeur à l'ourlet</b>											
Chemise A	119	122	126	131	136	141	146	151	156	161	cm
<b>Largeur, chaque jambe</b>											
Pantalon B	50	51	52	53	55	56	57	58	60	61	cm
<b>Longueur finie - dos, votre nuque à l'ourlet</b>											
Chemise A	78	79	79	80	81	81	82	83	83	84	cm
<b>Longueur finie - côté, taille à l'ourlet</b>											
Pantalon B	91	91	92	93	93	94	95	95	96	97	cm

\*avec sens \*\*sans sens



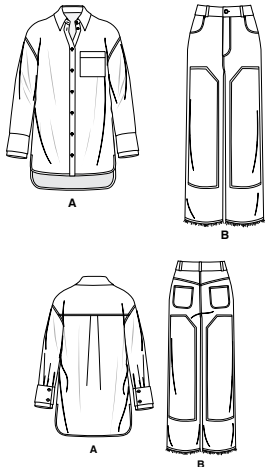
A



B



@beautejadore



**24 PATTERN PIECES**

- 1 FRONT - A
- 2 POCKET - A
- 3 BACK - A
- 4 YOKE BACK - A
- 5 COLLAR BAND - A
- 6 COLLAR - A
- 7 SLEEVE - A
- 8 CONTINUOUS LAP - A
- 9 UPPER CUFF - A
- 10 CUFF - A
- 11 GUIDE FOR BUTTONHOLES - A
- 12 FRONT - B
- 13 POCKET FACING - B
- 14 SIDE FRONT AND POCKET - B
- 15 FLY - B
- 16 FLY FACING - B
- 17 BACK - B
- 18 BACK POCKET - B
- 19 YOKE BACK - B
- 20 PATCH - B
- 21 CARRIERS - B
- 22 RIGHT FRONT WAISTBAND - B
- 23 LEFT FRONT WAISTBAND - B
- 24 BACK WAISTBAND - B

**PATTERN MARKINGS**

- GRAINLINE:** Place on straight grain of fabric, parallel to selvage or fold.
- FOLDLINE:** Place line on fold of fabric.
- BUTTONHOLE MARKING:** Indicates exact length and placement of buttonholes.
- BUTTON MARKING:** Indicates button placement.
- NOTCHES AND SYMBOLS:** For matching seams and construction details.
- Indicates the Bustline, Waistline, Hip and/or Biceps. Measurements refer to circumference of Finished Garment (Body Measurement + Wearing Ease + Design Ease). Adjust pattern if necessary. The measurement excludes pleats, tucks, darts and seam allowances.
- SEAM ALLOWANCE:** 5/8" (1.5cm) included unless otherwise indicated, but not printed on tissue.

**ADJUST IF NECESSARY**

- TO SHORTEN:** Crease along adjustment line. Make a fold half the amount needed. Tape in place.
- TO LENGTHEN:** Slash between adjustment lines. Spread amount as needed, keeping edges parallel. Tape over paper.

Lengthen or Shorten at adjustment lines (==) or where indicated on pattern. If substantial length is added, you may need to purchase additional fabric.

When Alteration lines are not on tissue, lengthen or shorten at lower edge.

**SHRINK FABRIC** if not labeled pre-shrunk. Press.

**CIRCLE LAYOUT** for View, Size, Fabric Width.

Use **WITH NAP** layout for fabrics with one-way designs, nap, pile or surface shading. Because most knits have surface shading, a with nap layout is used.

For **DOUBLE THICKNESS (WITH FOLD)** - fold fabric with right sides together.

**\* DOUBLE THICKNESS (WITHOUT FOLD)** - For fabrics with nap, fold fabric crosswise, right sides together. Mark as shown. Cut along crosswise fold of fabric (A). Turn upper layer 180° so arrows go in same direction and place over lower layer, right sides together (B).

For **SINGLE THICKNESS** - place fabric right side up. (For Fur Pile fabrics, place pile side down.)

**CUTTING AND MARKING**

- ★ Cut other pieces first, allowing enough fabric to cut this piece. Open fabric. For "Cut 1" pieces, cut piece once on single layer of fabric with piece face up on right side of fabric.
- Pattern may have cutting lines for several sizes. Select the proper cutting line or pattern pieces for your size.
- Before **CUTTING** place all pieces on fabric according to layout. Pin. (Layouts show approximate position of pattern pieces; position may vary according to your pattern size.) Cut **ACCURATELY**, cutting notches outward.
- Before removing pattern, **TRANSFER MARKINGS** and lines of construction to Wrong Side of fabric, using the Pin and Chalk Pencil method or Tracing Paper and Dressmaker Wheel. Markings needed on right side of fabric should be thread traced.
- NOTE:** Broken-line boxes (a| b| c|) in layouts represent pieces cut by measurements provided.

**CUTTING LAYOUTS**

To customize your look like Beautejadore, see Sew Along video.

RIGHT SIDE OF PATTERN	WRONG SIDE OF PATTERN	RIGHT SIDE OF FABRIC	WRONG SIDE OF FABRIC
-----------------------	-----------------------	----------------------	----------------------

**SHIRT A**  
 use pieces: 1 2 3 4 5 6 7 8 9 10

45" (115 cm) with nap  
 sizes 8 10 12 14 16

45" (115 cm) with nap  
 sizes 18 20 22 24 26

60" (150 cm) with nap  
 sizes 8 10 12  
 cut one of piece 2

60" (150 cm) with nap  
 sizes 14 16 18 20 22 24 26

**INTERFACING**  
 use pieces: 5 6 9 10

20" (51 cm) all sizes

**PANTS B**  
 use pieces: 12 14 15 16 17 18 19 20 21 22 23 24

45" (115 cm) with nap  
 sizes 8 10 12 14  
 cut one of pieces 15 16

45" (115 cm) with nap  
 sizes 16 18 20 22 24 26

60" (150 cm) with nap  
 sizes 8 10 12 14  
 cut one of pieces 15 16

60" (150 cm) with nap  
 sizes 16 18 20 22 24 26  
 cut one of piece 16

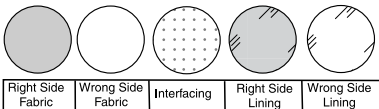
**LINING**  
 use piece: 13

45" (115 cm) without nap  
 all sizes

**INTERFACING**  
 use pieces: 15 16 22 23 24

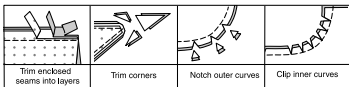
20" (51 cm) all sizes

**SEWING INFORMATION  
FABRIC KEY**



**SEAM ALLOWANCES**

Use 5/8" (1.5cm) seam allowances unless otherwise indicated.



**PIN AND FIT**

Pin or baste seams, **RIGHT SIDE TOGETHER**, matching notches. Fit garment before stitching major seams.

**PRESS**

Press seam allowances flat; then open unless otherwise stated. Clip where necessary so they lie flat.

**GLOSSARY**

Sewing terms appearing in **BOLD TYPE** in Sewing Instructions are explained below.

**EDGESTITCH** - Stitch close to finished edge or seam.

**NARROW HEM** - Turn in hem; press, easing in fullness if necessary. Open out hem. Turn in again so raw edge is along crease; press. Turn in along crease; stitch.

**REINFORCE** - Stitch along seamline/stitching line where indicated in sewing instructions, using small machine stitches.

**SLIPSTITCH** - Slide needle through a folded edge, then pick up a thread of underneath fabric.

**STAYSTITCH** - Stitch 1/8" (3mm) from seamline in seam allowance (usually 1/2" (13mm) from raw edge).

**TOPSTITCH** - On outside, stitch 1/4" (6mm) from edge, seam or previous stitching, using presser foot as guide, or stitch where indicated in instructions.

**UNDERSTITCH** - Open out facing or underside of garment; stitch to seam allowance close to seam.



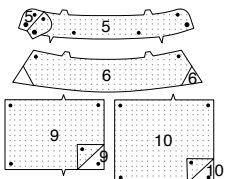
@beautejadore

**SEWING DIRECTIONS**

**SHIRT A**

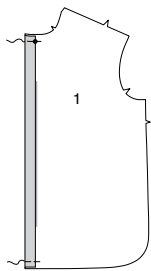
**INTERFACING**

1. Trim corners from **INTERFACING**, as shown. Fuse to wrong side of each matching **FABRIC** section, following manufacturer's instructions.

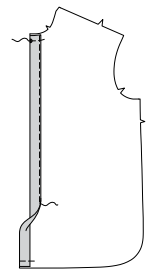


**FRONT AND BACK**

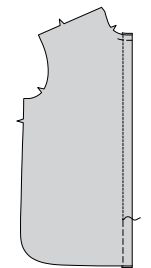
2. Turn opening edge of front to wrong side along outer foldline for interfacing; press. baste raw edges together.



3. Turn front self facing to wrong side along foldline for facing; press. Baste across upper raw edge. Baste close to long inner edge, as shown.



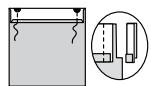
4. On outside, stitch front along basting to within 4"(10cm) of lower raw edge, as shown.



5. Turn in 1/4" (6mm) on upper edge of **POCKET** (2). Press.



6. Turn upper edge to outside along foldline. Stitch ends. Trim.



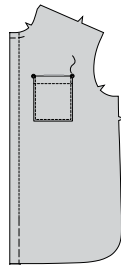
7. Turn upper edge of pocket to inside, turning in remaining seam allowances and diagonally folding corners. Press. Baste close to inner pressed edge.



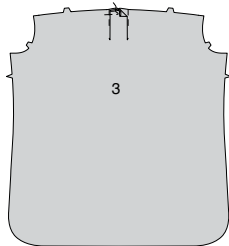
8. **TOPSTITCH** along basting.



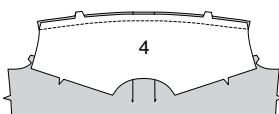
9. On outside, pin pocket to left front, matching symbols. **EDGESTITCH** side and lower edges, reinforcing upper ends.



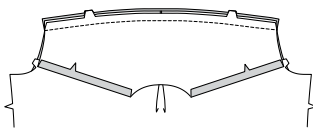
10. To make pleats in **BACK** (3) on outside, crease along solid lines. Bring creases to broken lines. Baste across upper edge. Press.



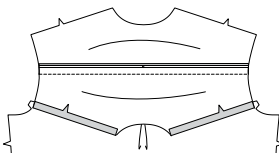
11. With right sides together, pin one **YOKE BACK** (4) sections to upper edge of back matching notches. Stitch.



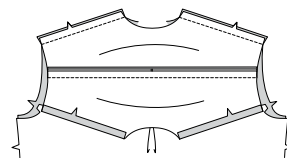
12. Press under seam allowances on shoulder edges of yoke back facing. On inside, pin right side of facing to back, matching notches. Stitch.



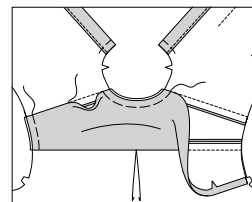
13. Press seam up, pressing yoke facing up, over seam.



14. Stitch back to front sections together at shoulders, keeping yoke facing free.

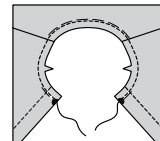


15. Press shoulder seams toward facing, slipping raw edges under pressed edges of back facing. **SLIPSTITCH** pressed edges over seam. Baste raw edges together.

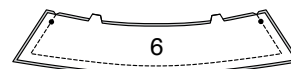


**COLLAR AND COLLAR BAND**

16. **STAYSTITCH** garment neck edge.



17. Stitch **COLLAR** (6) sections together, leaving edge with notches open. Trim.



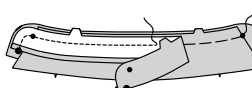
18. Turn right side out. Press. Baste raw edges together.



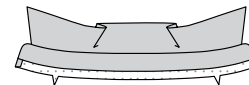
19. Turn in 5/8"(1.5cm) seam allowance on single notched edge of uninterfaced **COLLAR BAND** (5) section. Press, easing in fullness. Trim pressed-in seam allowance to 3/8"(1cm).



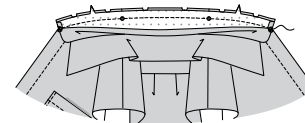
20. Pin uninterfaced side of collar to interfaced collar band between large circles. Pin uninterfaced collar band over collar; baste. Stitch, leaving neck edge open. Trim.



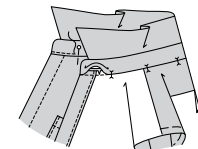
21. Turn right side out. Press.



22. Pin collar band to neck edge, clipping garment neck edge where necessary. Stitch, keeping pressed edge free. Trim. Press seam toward collar band.

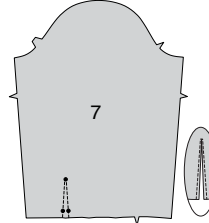


23. Pin pressed edge of band over seam. Stitch close to finished seam, catching in pressed edge on inside.



**SLEEVES AND CUFFS**

24. **REINFORCE** lower edge of **SLEEVE** (7) along stitching line. Slash between stitching to upper end.



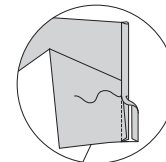
25. Turn in 1/4"(6mm) seam allowance on unmarked edge of **CONTINUOUS LAP** (8). Press.



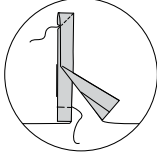
26. Pin right side of continuous lap to wrong side of sleeve, placing remaining 1/4"(6mm) seamline along stitching. Stitch.



27. Press seam toward continuous lap. Turn pressed edge of continuous lap to outside over seam. **SLIPSTITCH**. Press.



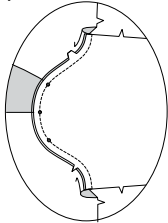
28. Turn front edge of continuous lap to inside, as shown. Baste across lower edge. To keep lap in place, stitch diagonally across upper edge of lap, as shown.



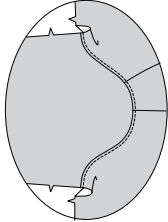
29. To make pleats in sleeve, on outside, crease along solid lines. Bring creases to broken lines; baste. Baste across lower edge. Press.



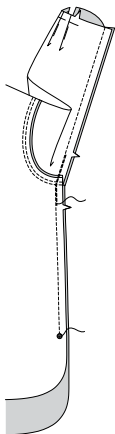
30. With right sides together, pin sleeve to armhole edge, placing center small dot at shoulder seam, matching remaining small dots, having raw edges even. Baste. Stitch. Press seam away from sleeve.



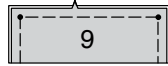
31. On outside, TOPSTITCH front and back armhole edges, catching in seam on inside. If you prefer, trim seam close to top-stitching.



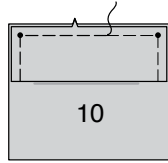
32. Pin front and back together at sides; pin sleeve edges together. Stitch in one continuous seam, ending at large dot. Backstitch to reinforce seam. Stitch underarm curve again along previous stitching, as shown.



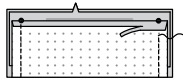
33. Fold UPPER CUFF (9) in half lengthwise, along fold line. Baste raw edges together.



34. On outside, pin upper cuff to CUFF (10) section matching notches. Baste.



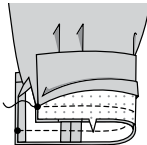
35. Turn in 5/8" (1.5cm) seam on unnotched edge of cuff. Trim pressed seam allowance to 3/8" (1cm). Fold lower edge of cuff to outside along fold line. Press. Stitch ends. Trim.



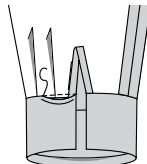
36. Turn cuff right side out. Press.



37. Pin cuff to sleeve, matching notches and placing small dots at opening edge. Stitch, keeping pressed edge free. Trim. Press seam allowances toward cuff.

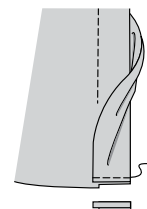


38. SLIPSTITCH pressed edge of cuff over seam.

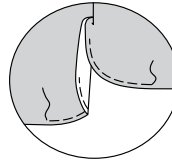


FINISHING

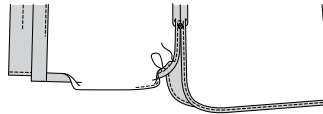
39. Remove basting at lower edge of front. Turn front self facing to outside along facing foldline. Stitch 5/8" (15mm) from lower edge. Trim seam, as shown.



40. To ease fullness along curves, machine-baste 1/4" (6mm) from raw edge.



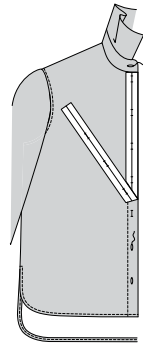
41. Turn self-facings to inside. Make 5/8" (1.5cm) NARROW HEM at lower edge, pulling up bobbin thread to ease in fullness on curves. At side opening edges, taper to nothing above large dot. Pivot across seam allowance 1/4" (6mm) above large dot. Continue across self facings when stitching.



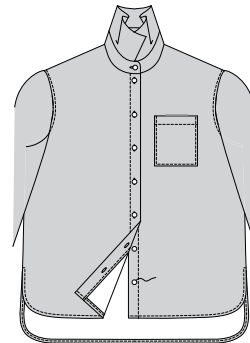
42. On outside, TOPSTITCH remainder of front facing, connecting with previous topstitching.



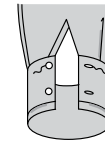
43. Place GUIDE FOR BUTTONHOLES (11) on right front, having edges of tissue even with collar band seam and finished edges of garment, as shown. Transfer markings. Make buttonholes on right front and collar band at markings.



44. Lap opening edges, matching centers. Using buttonholes as guides, make button markings on left front and collar band. Sew buttons at markings.



45. Make buttonholes in cuff at markings. Sew buttons to cuff at markings.

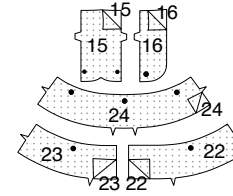


PANTS B

Note: EDGESTITCH is optional.

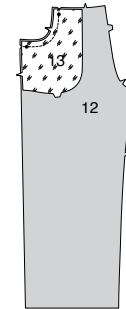
INTERFACING

1. Trim corners from INTERFACING, as shown. Fuse to wrong side of each matching FABRIC section, following manufacturer's instructions.

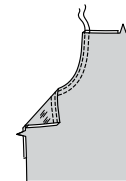


FRONT AND BACK

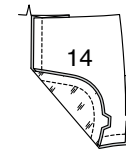
2. Stitch each POCKET FACING (13) section to each upper side edge of FRONT (12). Trim.



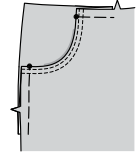
3. Turn pocket facing to inside. Press. TOPSTITCH and EDGESTITCH upper side edge of front.



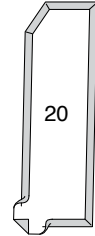
4. Stitch one SIDE FRONT AND POCKET (14) section to each pocket at outer edge, keeping front free.



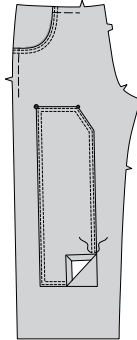
5. Baste upper and side edges.



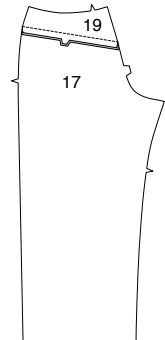
6. Press under outer edges of PATCH (20) sections along seamline, folding in fullness at corners.



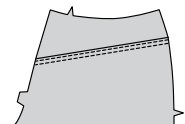
7. On outside, pin patches to each front section matching markings. EDGESTITCH and TOPSTITCH patches in place.



8. With right sides together, stitch YOKE BACK (19) to BACK (17) sections matching notches. Press seam down.



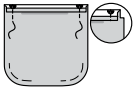
9. TOPSTITCH and EDGESTITCH back along yoke seam.



10. Stitch curved edges of BACK POCKET (18) 3/8"(1cm) from raw edge, using long machine stitches, as shown.



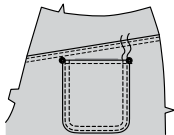
11. Turn upper edge to outside along foldline, turning under 1/4"(6mm) on raw edge; stitch ends. Trim.



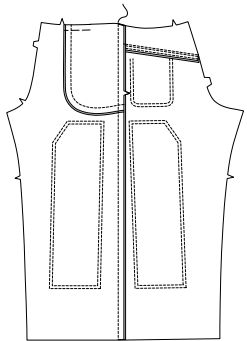
12. Turn upper edge of pocket to inside, turning in seam allowances on remaining edges; pull threads to ease in fullness on curves. Press. Stitch pocket close to upper pressed edge.



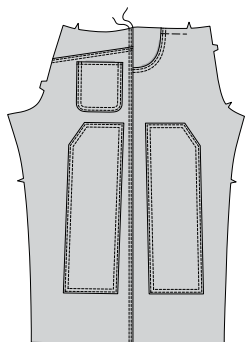
13. Pin pocket to back, matching symbols. EDGESTITCH and TOPSTITCH side and lower edges.



14. Apply remaining patches to back in same manner as front. With right sides together, stitch front to back at side seams. Press seams toward back.



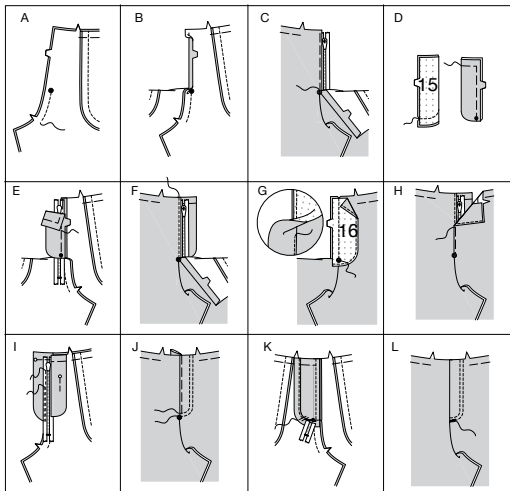
15. Optional: On outside, TOPSTITCH and EDGESTITCH back sections, in direction of seam.



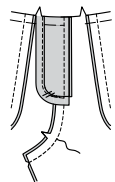
ZIPPER AND CROTCH SEAMS

16. Construct front fly as follows:

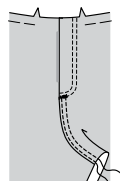
- A-Stitch front sections together at center front between large dot and notch.
- B-Turn in right front opening edge along foldline; press.
- C-Place closed zipper (face up) under right front opening edge, having pressed edge close to zipper teeth and zipper stop at small dot. Using a zipper foot, baste close to pressed edge.
- D-With right sides, fold fly along foldline. Stitch lower edge. Trim. Turn. Press. Baste raw edges.
- E-On inside, pin fly to right front opening edge (over zipper), matching notches and small dots, having raw edges even. Baste along previous basting for zipper.
- F-On outside, using a zipper foot, stitch close to pressed edge of front through all layers.
- G-FINISH outer edge of fly facing. Pin fly facing to left front opening edge, matching notches and large dots. Stitch, ending at large dot. Trim. UNDERSTITCH fly facing. Turn facing to inside.
- H-Lap left front over right, matching centers. Baste close to edge through all thicknesses.
- I-Pin right fly out of the way. Open out fly facing. Pin remaining zipper tape to fly facing, keeping left front free. Using a zipper foot, stitch in place close to zipper teeth and along center of zipper tape.
- J-Turn facing down. On outside, stitch left front along stitching lines, keeping right fly free. If you prefer topstitch 1/4" (6mm) away from stitching line.
- K-Turn right fly back in place. On inside, hand tack fly and facing together at lower edge, as shown. Trim away excess zipper tape even with lower edge of fly, if needed.
- L-If desired, on outside, machine-stitch a bar tack across lower end of fly through all thicknesses.



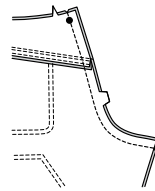
17. Stich remainder of front crotch seam. Press seam toward left front.



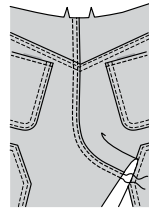
18. Optional: On outside, EDGESTITCH and TOPSTITCH left front, along seam.



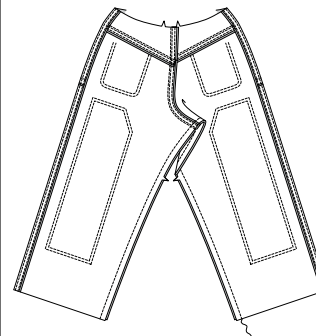
19. With right sides together, stitch center back seam of back sections, matching notches. Press seam toward left back.



20. Optional: On outside, EDGESTITCH and TOPSTITCH left back, in direction of seam.



21. With right sides together, pin front to back at inner legs seams, matching seams and notches. Stitch.



WAISTBAND

22. Fold carrier (21) in half, lengthwise with WRONG sides together. Press, setting in a crease.



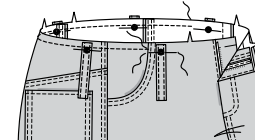
23. Open out long edges of carrier and turn them to WRONG side so that they meet at the crease. Press.



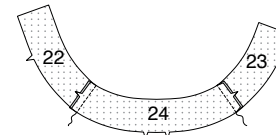
24. Fold carrier in half lengthwise, bringing pressed edges together. EDGESTITCH close to both long edges. Cut five pieces each measuring 4-1/4"(10.8cm) long.



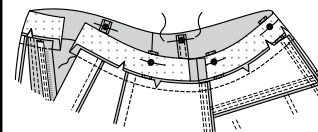
25. On outside, pin carriers to upper edge of pants, centering edges over large dots, having raw edges even. Baste. STAYSTITCH upper edge of pants between side front pocket edges, as shown.



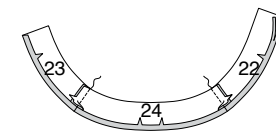
26. With right sides together, stitch Interfaced RIGHT FRONT WAISTBAND (22) and LEFT FRONT WAISTBAND (23) to BACK WAISTBAND (24) at sides.



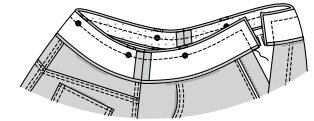
27. With right sides together, pin band to upper edge of pants matching centers and having raw edges even. Baste, clipping to stay-stitching if necessary. Stitch. Trim; press seam toward band, pressing band out. Note: Waistband extends 5/8"(1.5cm) beyond front opening edges. Turn up carriers and pin to upper edge of waistband, centering ends at large dots. Baste.



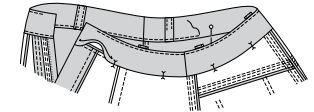
28. Stitch side seams of waistband facing sections. Press under 1/2"(1.3cm) on notched edge of facing; trim to 1/4"(6mm).



29. With right sides together, pin facing to waistband matching centers and seams. Stitch upper and front edges. Trim seam.

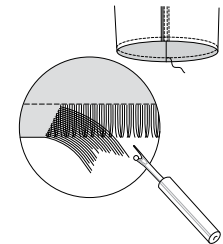


30. UNDERSTITCH facing. Turn facing to inside; press. On inside, pin pressed edge of waistband facing over seam, placing pins on outside. On outside, edgestitch band close to seam catching in pressed edge on inside.

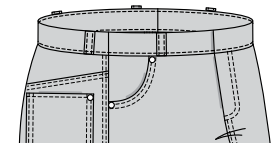


FINISHING

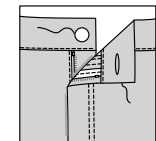
31. Stitch 1/2"(1.3cm) from lower edge (or as desired). To fray lower leg edges, make small cuts all around the raw edge every 2"-3"(5-7cm). Cut to the stitching being careful not to cut through stitching. Using a seam ripper in small sections, pull out lengthwise threads as far as stitching. Optional- NARROW HEM lower edge if you prefer.



32. Apply studs to upper and side edge of pockets on front and upper side edge of pockets on back, as shown.



33. Make buttonhole in left front waistband at marking. Sew button to right front at marking.





# Congrats!

You've completed your sewing adventure

---

**SHARE  
YOUR** LOOK



Post your pattern and tag us  
**@simplicity\_creative\_group** and **#knowMepatterns**  
for a chance to be featured on our social media.

Look for more PDF patterns at **simplicity.com**

Have a question or need help with your sewing project call us at  
1-800-782-0323

