



AARONICA B. COLE  
**knowME**  
BY mimi g

ME2050

BIN #4



Scan QR code for a Sew-Along video tutorial.  
@needleandthebelle  
Customize your look like needleandthebelle - See Sew Along Video.  
Designed and printed in USA

**MISSES' AND WOMEN'S KNIT DRESS IN TWO LENGTHS** Easy

**Suggested Fabrics:** Stretch Knits only such as Double Knit, ITY, Sweater Knit. See Stretch Gauge.

MISSES' SIZES	10	12	14	16	18
EUROPEAN	36	38	40	42	44

**BODY MEASUREMENTS:** Select pattern size based on body measurements

Bust	32½	34	36	38	40	Ins.
Waist	25	26½	28	30	32	"
Hip	34½	36	38	40	42	"
Back-neck to waist	16	16¼	16½	16¾	17	"

**Interfacing A,B** 20" - ½ yd.

Dress A	60**	1¼	1¼	1¼	1¼	1¼	1¼	Yds.
---------	------	----	----	----	----	----	----	------

**Contrast A (Front, Back, Front Neck Facing, Back Neck Facing, Sleeve, Cuffs)**

60**	1¼	1¼	1¼	1¼	1¼	1¼	1¼	Yds.
------	----	----	----	----	----	----	----	------

Dress B	60**	2%	2%	2%	2%	2%	Yds.
---------	------	----	----	----	----	----	------

WOMEN'S SIZES	20W	22W	24W	26W	28W	30W	32W	34W	36W	38W
EUROPEAN	46	48	50	52	54	56	58	60	62	64

**BODY MEASUREMENTS:** Select pattern size based on body measurements

Bust	42	44	46	48	50	52	54	56	58	60	Ins.
Waist	35	37	39	41½	44	46½	49	51½	53	54½	"
Hip	44	46	48	50	52	54	56	58	60	62	"
Back-neck to waist	17¼	17%	17½	17%	17¾	17%	18	18%	18¼	18%	"

**Interfacing A,B** 20" - ½ yd.

Dress A	60**	1¼	1¼	1¼	1¼	1¼	1¼	1¼	1¼	1¼	Yds.
---------	------	----	----	----	----	----	----	----	----	----	------

**Contrast A (Front, Back, Front Neck Facing, Back Neck Facing, Sleeve, Cuff)**

60**	1¼	1¼	1¼	1¼	1¼	1¼	1¼	1¼	1¼	1¼	Yds.
------	----	----	----	----	----	----	----	----	----	----	------

Dress B	60**	3¼	3¼	3¼	3¼	3¼	3¼	3¼	3¼	3¼	Yds.
---------	------	----	----	----	----	----	----	----	----	----	------

**NOTE:** Please refer to the English guide for **FINISHED GARMENT MEASUREMENTS**.

\*with nap \*\*without nap

**ROBE EN TRICOT EN DEUX LONGUEURS POUR JEUNES FEMMES ET FEMMES** Facile

**Tissus Conseillés:** Tricot extensibles seulement tels que Tricot double, Tricot interlock en fil retors, Tricot pour chandail. Reportez-vous au taux d'élasticité.

TAILLES (J. FEMMES)	10	12	14	16	18
FRANÇAISES	38	40	42	44	46
EUROPEEN	36	38	40	42	44

**MESURES DU CORPS:** Choisissez la taille du patron basée sur les mesures du corps

Poitrine	83	87	92	97	102	cm
Taille	64	67	71	76	81	"
Hanches	88	92	97	102	107	"
Dos du cou à la taille	40.5	41.5	42	42.5	43	"

**Entoilage A,B** 51cm-0.5m

Robe A	150cm*	1.0	1.0	1.0	1.0	1.1	m
--------	--------	-----	-----	-----	-----	-----	---

**Contraste A (Devant, Dos, Parementure d'encolure devant, Parementure d'encolure dos, Manche, Poignets)**

150cm*	1.0	1.0	1.0	1.0	1.1	m
--------	-----	-----	-----	-----	-----	---

Robe B	150cm*	2.2	2.2	2.2	2.2	m
--------	--------	-----	-----	-----	-----	---

TAILLES (FEMMES)	20W	22W	24W	26W	28W	30W	32W	34W	36W	38W
FRANÇAISES	48	50	52	54	56	58	60	62	64	66
EUROPEEN	46	48	50	52	54	56	58	60	62	64

**MESURES DU CORPS:** Choisissez la taille du patron basée sur les mesures du corps

Poitrine	107	112	117	122	127	132	137	142	147	152	cm
Taille	89	94	99	105	112	118	124	131	134	138	"
Hanches	112	117	122	127	132	137	142	147	152	157	"
Dos du cou à la taille	44	44	44.5	45	45	45.5	46	46	46.5	47	"

**Entoilage A,B** 51cm-0.5m

Robe A	150cm*	1.1	1.3	1.3	1.6	1.6	1.6	1.6	1.7	1.7	m
--------	--------	-----	-----	-----	-----	-----	-----	-----	-----	-----	---

**Contraste A (Devant, Dos, Parementure d'encolure devant, Parementure d'encolure dos, Manche, Poignets)**

150cm*	1.1	1.3	1.3	1.6	1.6	1.6	1.6	1.7	1.7	m
--------	-----	-----	-----	-----	-----	-----	-----	-----	-----	---

Robe B	150cm*	3.0	3.0	3.0	3.0	3.0	3.0	3.1	3.1	3.1	m
--------	--------	-----	-----	-----	-----	-----	-----	-----	-----	-----	---

**NOTE:** Si'il vous plaît, reportez-vous au guide en français pour les **MESURES DU VÊTEMENTS FINI**.

\*avec sens \*\*sans sens



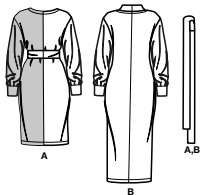
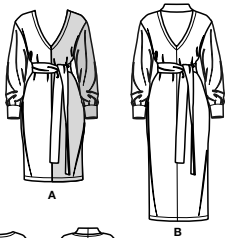
Use the 1 inch (2.54cm) box to ensure you are using rule at 100%  
Utilisez la boîte de 2.54 cm pour vous assurer d'utiliser la règle à 100%.  
Utilizar un cuadrado de 2.54 cm para asegurarse de estar usando la regla al 100%.



When using the Pick-A-Knit® rule to measure your fabrics stretch capacity, rule must be viewed or printed at 100%.  
Quand vous utilisez la règle Pick-A-Knit® pour mesurer la capacité d'élasticité des tissus, la règle doit être visible ou imprimée à 100%.  
Al utilizar la regla Pick-A-Knit® para medir la capacidad de elasticidad de las telas, la regla debe estar visible o impresa al 100%.



@needleandthebelle



**PATTERN MARKINGS**

**GRAINLINE:** Place on straight grain of fabric, parallel to selvage or fold.  
**FOLDLINE:** Place line on fold of fabric.  
**BUTTONHOLE MARKING:** Indicates exact length and placement of buttonholes.  
**BUTTON MARKING:** Indicates button placement.  
**NOTCHES AND SYMBOLS:** For matching seams and construction details.  
 Indicates the Bustline, Waistline, Hip and/or Biceps. Measurements refer to circumference of Finished Garment (Body Measurement + Wearing Ease + Design Ease). Adjust pattern if necessary. The measurement excludes pleats, tucks, darts and seam allowances.  
**SEAM ALLOWANCE:** 5/8" (1.5cm) not included unless otherwise indicated, but not printed on tissue.

**ADJUST IF NECESSARY**

Lengthen or Shorten at adjustment lines (==) or where indicated on pattern. If substantial length is added, you may need to purchase additional fabric.  
**TO SHORTEN:** Crease along adjustment line. Make a fold half the amount needed. Tape in place.  
**TO LENGTHEN:** Slash between adjustment lines. Spread amount as needed, keeping edges parallel. Tape over paper.  
 When Alteration lines are not on tissue, lengthen or shorten at lower edge.

**CUTTING AND MARKING**

**SHRINK FABRIC** if not labeled pre-shrunk. Press.  
**CIRCLE LAYOUT** for View, Size, Fabric Width.  
 Use **WITH NAP** layout for fabrics with one-way designs, nap, pile or surface shading. Because most knits have surface shading, a with nap layout is used.  
 For **DOUBLE THICKNESS (WITH FOLD)** - fold fabric with right sides together.  
**DOUBLE THICKNESS (WITHOUT FOLD)** - For fabrics with nap, fold fabric crosswise, right sides together. Mark as shown. Cut along crosswise fold of fabric (A). Turn upper layer 180° so arrows go in same direction and place over lower layer, right sides together (B).  
 For **SINGLE THICKNESS** - place fabric right side up. (For Fur Flee fabrics, place pile side down.)  
 ★ Cut other pieces first, allowing enough fabric to cut this piece. Open fabric. For "Cut 1" pieces, cut piece once on single layer of fabric with piece face up on right side of fabric.  
 Pattern may have cutting lines for several sizes. Select the proper cutting line or pattern pieces for your size.  
 Before **CUTTING** place all pieces on fabric according to layout. Pin. (Layouts show approximate position of pattern pieces; position may vary according to your pattern size.) Cut **ACCURATELY**, cutting notches outward.  
 Before removing pattern, **TRANSFER MARKINGS** and lines of construction to Wrong Side of fabric, using the Pin and Chalk/Pencil method or Tracing Paper and Dressmaker Wheel. Markings needed on right side of fabric should be thread traced.  
**NOTE:** Broken-line boxes (a! b! c!) in layouts represent pieces cut by measurements provided.

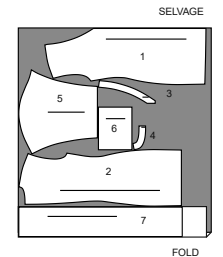
MISSES' SIZES	10	12	14	16	18
EUROPEAN	36	38	40	42	44

FINISHED GARMENT MEASUREMENTS (Includes Design and Wearing Ease)						
A.B Bust	32	33½	35½	37½	39½	Ints.
A.B Waist	28	29½	31½	33½	35½	"
A.B Hip	36	37½	39½	41½	43½	"
Width, lower edge						
Dress A	36	37½	39½	41½	43½	Ints.
Dress B	35	36½	38½	40½	42½	"
Finished back length from base of neck						
Dress A	34	34½	34½	34½	35	Ints.
Dress B	44	44½	44½	44½	45	"

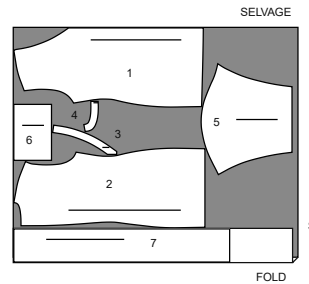
WOMEN'S SIZES	20W	22W	24W	26W	28W	30W	32W	34W	36W	38W
EUROPEAN	46	48	50	52	54	56	58	60	62	64

FINISHED GARMENT MEASUREMENTS (Includes Design and Wearing Ease)											
A.B Bust	41	43	45	47	49	51	53	55	57	59	Ints.
A.B Waist	37	39	41	43	45	47	49	51	53	55	"
A.B Hip	45½	47½	49½	51½	53½	55½	57½	59½	61½	63½	"
Width, lower edge											
Dress A	46	48	50	52	54	56	58	60	62	64	Ints.
Dress B	44½	46½	48½	50½	52½	54½	56½	58½	60½	62½	"
Finished back length from base of neck											
Dress A	36½	36½	36½	37	37½	37½	37½	38	38½	38½	Ints.
Dress B	48½	48½	48½	49	49½	49½	49½	50	50½	50½	"

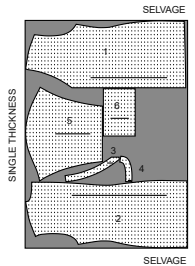
60" (150 cm)  
 with nap  
 sizes 20W 22W 24W



60" (150 cm)  
 with nap  
 sizes 26W 28W 30W 32W 34W 36W 38W



60" (150 cm)  
 with nap  
 sizes 20W 22W 24W 26W 28W 30W 32W 34W 36W 38W



**CUTTING LAYOUTS**

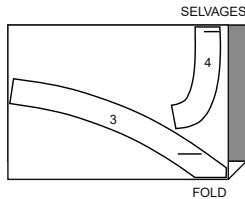
To customize your look like @needleandthebelle, see Sew Along video.

RIGHT SIDE OF PATTERN	WRONG SIDE OF PATTERN	RIGHT SIDE OF FABRIC	WRONG SIDE OF FABRIC

**INTERFACING A,B**

PIECES: 3 4

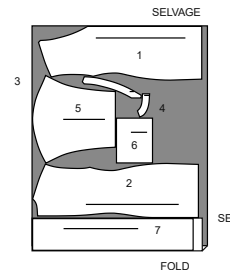
20" (51 cm)  
 without nap  
 all sizes



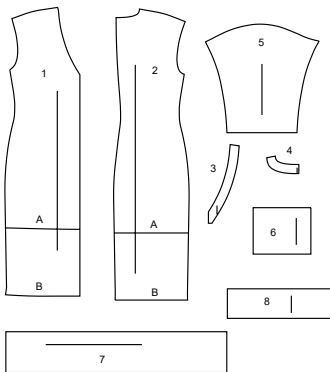
**DRESS A**

PIECES: 1 2 3 4 5 6 7

60" (150 cm)  
 with nap  
 sizes 10 12 14 16 18



**8 PATTERN PIECES**

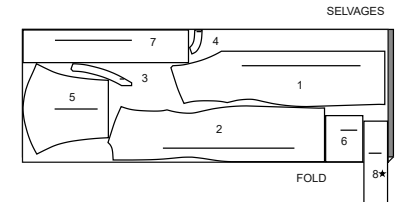


- 1 FRONT - A,B
- 2 BACK - A,B
- 3 FRONT NECK FACING - A,B
- 4 BACK NECK FACING - A,B
- 5 SLEEVE - A,B
- 6 CUFF - A,B
- 7 SASH - A,B
- 8 COLLAR - B

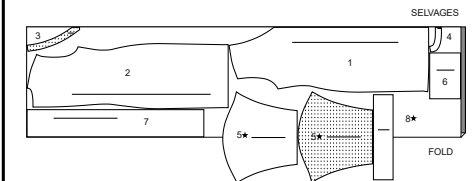
**DRESS B**

PIECES: 1 2 3 4 5 6 7 8

60" (150 cm)  
 with nap  
 sizes 10 12 14 16 18

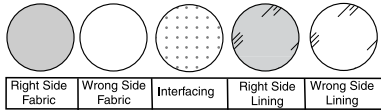


60" (150 cm)  
 with nap  
 sizes 20W 22W 24W 26W 28W 30W 32W 34W 36W 38W



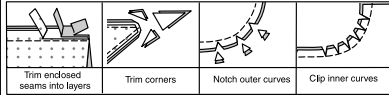
**SEWING INFORMATION**

**FABRIC KEY**



**SEAM ALLOWANCES**

Use 5/8" (1.5cm) seam allowances unless otherwise indicated.



**PIN AND FIT**

Pin or baste seams, **RIGHT SIDE TOGETHER**, matching notches. Fit garment before stitching major seams.

**PRESS**

Press seam allowances flat; then open unless otherwise stated. Clip where necessary so they lie flat.

**GLOSSARY**

Sewing terms appearing in **BOLD TYPE** in Sewing Instructions are explained below.

**DOUBLE-STITCH** - Stitch seam along seamline; stitch again 1/4" (6mm) away in seam allowance using a straight stitch OR zigzag stitch; trim close to second stitching OR overlock seam.

**FINISH** - Stitch 1/4" (6mm) from raw edge and finish with one of the following: (1) Pink OR (2) Overcast OR (3) Turn in along stitching and stitch close to fold OR (4) Overlock.

**OPTIONAL FOR HEMS:** Apply Seam Binding.

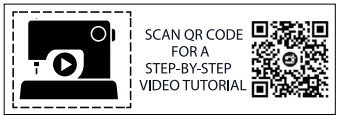
**REINFORCE** - Stitch along seamline where indicated in sewing instructions, using small machine stitches.

**SLIPSTITCH** - Slide needle through a folded edge, then pick up a thread of underneath fabric.

**STAYSTITCH** - Stitch 1/8" (3mm) from seamline in seam allowance (usually 1/2" (1.3cm) from raw edge).

**TOPSTITCH** - On outside, stitch 1/4" (6mm) from edge, seam or previous stitching, using presser foot as guide, or stitch where indicated in instructions.

**UNDERSTITCH** - Open out facing or underside of garment; stitch to seam allowance close to seam.



@needleandthebelle

**SEWING DIRECTIONS**

**DRESS AND SASH A, B**

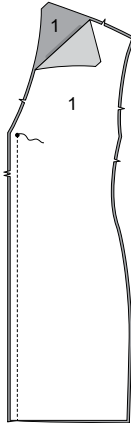
**NOTE:** Stretch fabric evenly in front and back of needle while stitching.

**NOTE:** Under each sub-heading, the first View will be illustrated, unless otherwise indicated

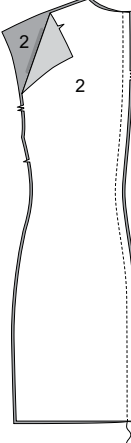
**NOTE:** Pin **INTERFACING** to wrong side of each matching **FABRIC** section. Fuse, following manufacturer's instructions. **NOTE:** Interfacing sections will be used as facing.

**FRONT AND BACK**

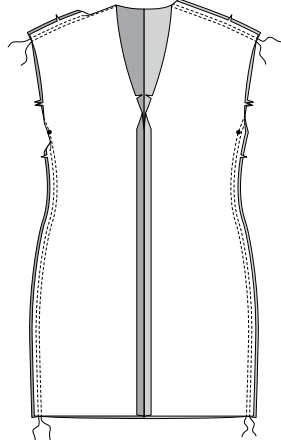
1. Stitch **FRONT** (1) sections together at center front, leaving open above small dot.



2. Stitch **BACK** (2) sections together at center back.

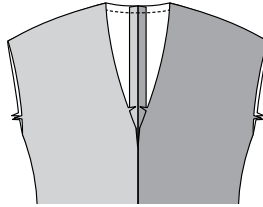


3. Stitch front to back at shoulders and sides in **DOUBLE-STITCHED** seams. Press seams toward back.

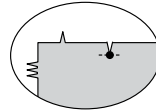
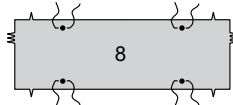


**VIEW B:**

4. **STAYSTITCH** back neck edge.



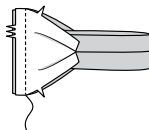
5. **REINFORCE COLLAR** (8) through small dots, as shown. Clip to small dots.



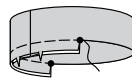
6. With right sides together, fold collar in half lengthwise. Stitch front edges together, between clips. Trim



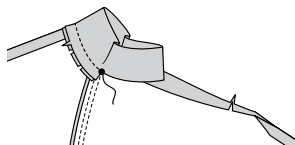
7. Turn right side out. Press. Stitch ends of collar together at center back.



8. Baste raw edges together.

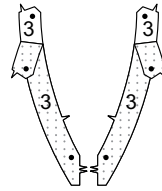


9. Pin collar to neck edge, matching centers and small dots, clipping neck edge of dress where necessary. Baste.

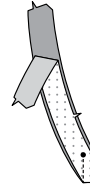


**VIEWS A, B:**

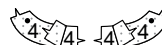
10. Pin **INTERFACING** (3) sections. Fuse, following manufacturer's instructions.



11. Stitch front neck facing sections together at center front, leaving open above small dots.



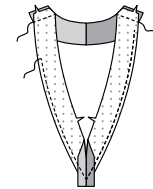
12. Pin **INTERFACING** to wrong side of **BACK NECK FACING** (4) sections. Fuse, following manufacturer's instructions.



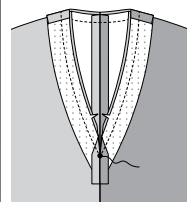
13. Stitch back neck facing sections together at center back.



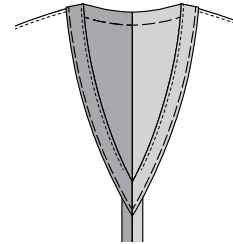
14. Stitch front neck facing to back neck facing at shoulders. **FINISH** lower unnotched edge of facing.



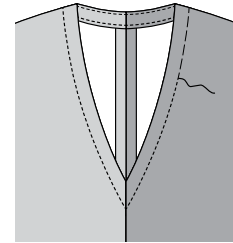
15. With right sides together, pin facing to neck edge, matching centers and small dots. **UNDERSTITCH** facing.



16. Turn facing to inside. Press. Baste facing in place close to finished edge.

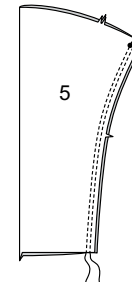


17. **TOPSTITCH** along basting.

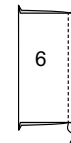


**SLEEVE AND FINISHING**

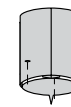
18. Stitch **SLEEVE** (5) seam in a **DOUBLE-STITCHED** seam. Press seam toward back.



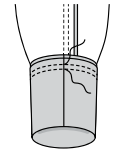
19. Stitch ends of **CUFF** (6) together.



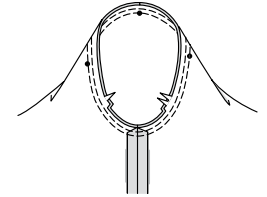
20. With wrong sides together, fold cuff in half lengthwise; press lightly. Pin raw edges together.



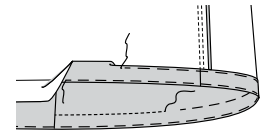
21. Pin cuff to sleeve, matching seams, as shown. Stitch, stretching cuff to fit. Stitch again 1/4" (6mm) away in seam allowance. Trim close to stitching. Press seam up.



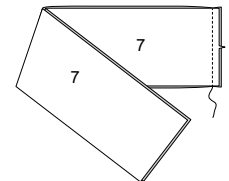
22. With right sides together, pin sleeve into armhole, placing center small dot at shoulder seam, matching remaining small dots. Baste. Stitch. Stitch again 1/4" (6mm) away in seam allowance. Trim close to stitching. Press seam toward sleeve.



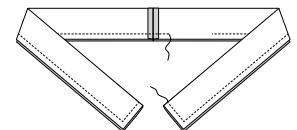
23. Turn up dress hem. Baste close to fold. Turn in 1/4" (6mm) on raw edge. Baste hem in place close to upper edge. Press. **TOPSTITCH** hem along upper basting.



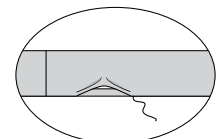
24. Stitch **SASH** (7) sections together at notched edge.



25. With right sides together, fold sash in half lengthwise. Stitch, leaving opening for turning.



26. Turn. Press. **SLIPSTITCH** opening.





# Congrats!

You've completed your sewing adventure

---

## SHARE YOUR LOOK



Post your pattern and tag us  
**@simplicity\_creative\_group** and **#knowMepatterns**  
for a chance to be featured on our social media.

Look for more PDF patterns at **simplicity.com**

Have a question or need help with your sewing project call us at  
1-800-782-0323

