



LYDIA NAOMI
knowME
BY mimi g

ME2049

BIN #3





Scan QR code for a Sew-Along video tutorial.



@Lydianaomistudio



Designed and printed in USA

Easy

MISSES' FRONT OR BACK REVERSIBLE KNIT DRESS

Suggested Fabrics: Stretch Knits only such as Interlock, ITY, Jacquard Knit, Jersey, Rib Knit. See Stretch Gauge.

Notions: 5½ yds. (5.3m) of ¾" (1cm) elastic.

Sizes	8	10	12	14	16	18	20	22	24	26
European	34	36	38	40	42	44	46	48	50	52

BODY MEASUREMENTS: Select pattern size based on body measurements

Bust	31½	32½	34	36	38	40	42	44	46	48	Ins.
Waist	24	25	26½	28	30	32	34	37	39	41	"
Hip-9" below waist	33½	34½	36	38	40	42	44	46	48	50	"
Back-neck to waist	15¾	16	16¼	16½	16¾	17	17¼	17½	17¾	18	"

Dress

Fabric (Right Front, Left Front, Front and Sleeve Ties, Sleeve Front)

60"*	1%	1¾	1¾	1¾	1¾	1¾	1¾	1¾	2	2	Yds.
------	----	----	----	----	----	----	----	----	---	---	------

Contrast (Back, Sleeve Back, Neck Facing, Back and Sleeve Ties)

60"*	1½	1%	1%	1%	1%	1¾	1¾	1¾	1%	1%	Yds.
------	----	----	----	----	----	----	----	----	----	----	------

FINISHED GARMENT MEASUREMENTS (Includes Design and Wearing Ease)

Bust	32½	33½	35	37	39	41	43	45	47	49	Ins.
Waist	25	26	27½	29½	31½	33½	35½	37½	39½	41½	"

Width, lower edge

Dress	48½	49½	51	53	55	57	59	61	63	65	Ins.
--------------	-----	-----	----	----	----	----	----	----	----	----	------

Finished back length from base of neck

Dress	43¾	44	44¼	44½	44¾	45	45¼	45½	45¾	46	Ins.
--------------	-----	----	-----	-----	-----	----	-----	-----	-----	----	------

*with nap **without nap

Facile

ROBE EN TRICOT RÉVERSIBLE AU DEVANT OU DOS POUR JEUNES FEMMES

Tissu Conseillé: Tricot extensibles seulement tels que Interlock, ITY (Tricot interlock en fil retors), Tricot Jacquard, Jersey, Tricot à côtes. Reportez-vous au taux d'élasticité.

Mercerie: 5.3m d'élastique de 1cm.

Tailles	8	10	12	14	16	18	20	22	24	26
Françaises	36	38	40	42	44	46	48	50	52	54
Européen	34	36	38	40	42	44	46	48	50	52

MESURES DU CORPS: Choisissez la taille du patron basée sur les mesures du corps

Poitrine	80	83	87	92	97	102	107	112	117	122	cm
Taille	61	64	67	71	76	81	87	94	99	104	"
Hanches (23cm au-dessous de la taille)	85	88	92	97	102	107	112	117	122	127	cm
Dos du cou à la taille	40	40.5	41.5	42	42.5	43	44	44.5	45	46	"

Robe

Tissu (Devant droit, Devant gauche, Attaches devant et de manche, Manche devant)

150cm*	1.5	1.6	1.6	1.6	1.6	1.7	1.7	1.7	1.8	1.8	m
--------	-----	-----	-----	-----	-----	-----	-----	-----	-----	-----	---

Contraste (Dos, Manche dos, Parementure d'encolure, Attaches dos et de manche)

150cm*	1.4	1.5	1.5	1.5	1.5	1.6	1.6	1.6	1.6	1.7	m
--------	-----	-----	-----	-----	-----	-----	-----	-----	-----	-----	---

MESURES DES VÊTEMENTS FINI (Motif et aisance de port compris)

Poitrine	83	85	89	94	99	104	109	114	119	124	cm
Taille	64	66	70	75	80	85	90	95	100	105	"

Largeur à l'ourlet

Robe	123	126	130	135	140	145	150	155	160	165	cm
-------------	-----	-----	-----	-----	-----	-----	-----	-----	-----	-----	----

Longueur finie – dos, votre nuque à l'ourlet

Robe	111	112	112	113	114	114	115	116	116	117	cm
-------------	-----	-----	-----	-----	-----	-----	-----	-----	-----	-----	----

*avec sens **sans sens



Use the 1 inch (2.54cm) box to ensure you are using rule at 100%

Utilisez la boîte de 2.54 cm pour vous assurer d'utiliser la règle à 100%.

Utilizar un cuadrado de 2.54 cm para asegurarse de estar usando la regla al 100%.

4" of crosswise folded knit must **STRETCH** from here
10 cm de tricot plié sur le travers doivent s'étire d'ici
10 cm de tejido de punto doblado al través deben estirarse desde acá

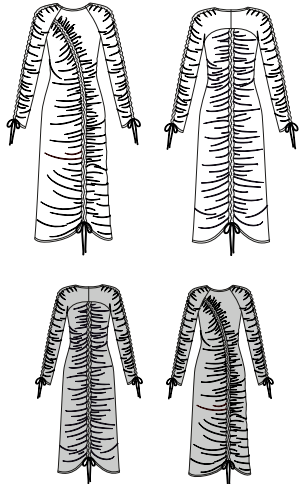
To Here (50%)
jusqu'ici (50%)
hasta acá (50%)

When using the Pick-A-Knit® rule to measure your fabrics stretch capacity, rule must be viewed or printed at 100%.
Quand vous utilisez la règle Pick-A-Knit® pour mesurer la capacité d'élasticité des tissus, la règle doit être visible ou imprimée à 100%.
Al utilizar la regla Pick-A-Knit® para medir la capacidad de elasticidad de las telas, la regla debe estar visible o impresa al 100%.

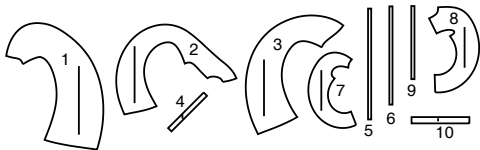


SCAN QR CODE
FOR A
STEP-BY-STEP
VIDEO TUTORIAL

@Lydianaomistudio



10 PATTERN PIECES



- 1 RIGHT FRONT
- 2 LEFT FRONT
- 3 BACK
- 4 TIE END
- 5 ELASTIC GUIDE FOR FRONT
- 6 ELASTIC GUIDE FOR BACK
- 7 SLEEVE FRONT
- 8 SLEEVE BACK
- 9 ELASTIC GUIDE FOR SLEEVE
- 10 NECK FACING

PATTERN MARKINGS

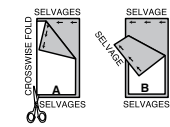
- GRAINLINE:** Place on straight grain of fabric, parallel to selvage or fold.
- FOLDLINE:** Place line on fold of fabric.
- BUTTONHOLE MARKING:** Indicates exact length and placement of buttonholes.
- BUTTON MARKING:** Indicates button placement.
- NOTCHES AND SYMBOLS:** For matching seams and construction details.
- Indicates the Bustline, Waistline, Hip and/or Biceps. Measurements refer to circumference of Finished Garment (Body Measurement + Wearing Ease + Design Ease). Adjust pattern if necessary. The measurement excludes pleats, tucks, darts and seam allowances.
- SEAM ALLOWANCE:** 5/8" (1.5cm) included unless otherwise indicated, but not printed on tissue.

ADJUST IF NECESSARY

- Lengthen or Shorten at adjustment lines (==) or where indicated on pattern. If substantial length is added, you may need to purchase additional fabric.
- TO SHORTEN:** Crease along adjustment line. Make a fold half the amount needed. Tape in place.
- TO LENGTHEN:** Slash between adjustment lines. Spread amount as needed, keeping edges parallel. Tape over paper.
- When Alteration lines are not on tissue, lengthen or shorten at lower edge.

CUTTING AND MARKING

- SHRINK FABRIC** if not labeled pre-shrunk. Press.
- CIRCLE LAYOUT** for View, Size, Fabric Width.
- Use **WITH NAP** layout for fabrics with one-way designs, nap, pile or surface shading. Because most knits have surface shading, a with nap layout is used.
- For **DOUBLE THICKNESS (WITH FOLD)** - fold fabric with right sides together.
- * DOUBLE THICKNESS (WITHOUT FOLD)** - For fabrics with nap, fold fabric crosswise, right sides together. Mark as shown. Cut along crosswise fold of fabric (A). Turn upper layer 180° so arrows go in same direction and place over lower layer, right sides together (B).
- For **SINGLE THICKNESS** - place fabric right side up. (For Fur Pile fabrics, place pile side down.)
- ★ Cut other pieces first, allowing enough fabric to cut this piece. Open fabric. For "Cut 1" pieces, cut piece once on single layer of fabric with piece face up on right side of fabric.
- Pattern may have cutting lines for several sizes. Select the proper cutting line or pattern pieces for your size.
- Before **CUTTING** place all pieces on fabric according to layout. Pin. (Layouts show approximate position of pattern pieces; position may vary according to your pattern size.) Cut **ACCURATELY**, cutting notches outward.
- Before removing pattern, **TRANSFER MARKINGS** and lines of construction to Wrong Side of fabric, using the Pin and Chalk Pencil method or Tracing Paper and Dressmaker Wheel. Markings needed on right side of fabric should be thread traced.
- NOTE:** Broken-line boxes (a| b| c|) in layouts represent pieces cut by measurements provided.



CUTTING LAYOUTS

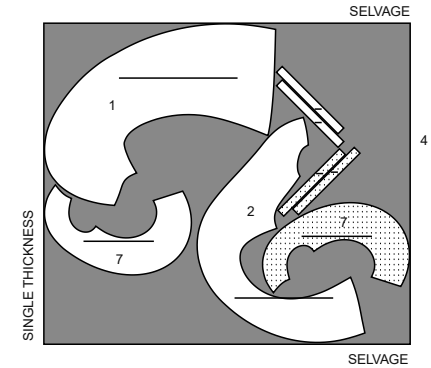
RIGHT SIDE OF PATTERN	WRONG SIDE OF PATTERN	RIGHT SIDE OF FABRIC	WRONG SIDE OF FABRIC

This garment can be worn two ways! The neckline shape allows you to wear the asymmetrical gathers either - as the front of the dress or as the back of the dress. For our purposes, the front of the dress will have the asymmetrical gathers.

DRESS (Front with asymmetrical gathers and raglan sleeves.)

PIECES 1 2 4 7

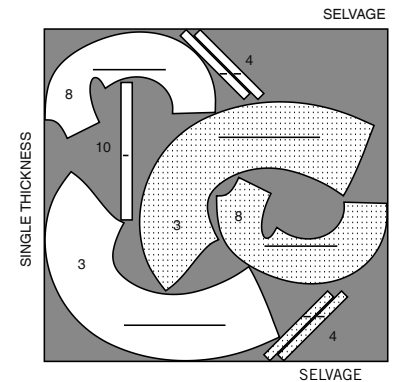
60" (150 cm)
with nap
all sizes



CONTRAST (Back with center gathers and yoke sleeves.)

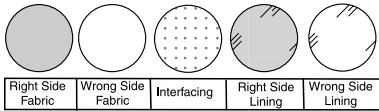
PIECES 3 4 8 10

60" (150 cm)
with nap
all sizes



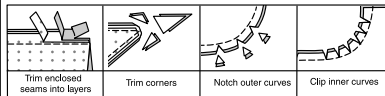
SEWING INFORMATION

FABRIC KEY



SEAM ALLOWANCES

Use 5/8" (1.5cm) seam allowances unless otherwise indicated.



PIN AND FIT

Pin or baste seams, **RIGHT SIDE TOGETHER**, matching notches. Fit garment before stitching major seams.

PRESS

Press seam allowances flat; then open unless otherwise stated. Clip where necessary so they lie flat.

GLOSSARY

Sewing terms appearing in **BOLD TYPE** in Sewing Instructions are explained below.

NARROW HEM - Turn in hem; press, easing in fullness if necessary. Open out hem. Turn in again so raw edge is along crease; press. Turn in along crease; stitch.

SLIPSTITCH - Slide needle through a folded edge, then pick up a thread of underneath fabric.

UNDERSTITCH - Open out facing or underside of garment; stitch to seam allowance close to seam.



SCAN QR CODE FOR A STEP-BY-STEP VIDEO TUTORIAL

@Lydianaomistudio

PATTERN PIECES WILL BE IDENTIFIED BY NUMBERS THE FIRST TIME THEY ARE USED.

STITCH SEAMS WITH RIGHT SIDES TOGETHER UNLESS OTHERWISE STATED.

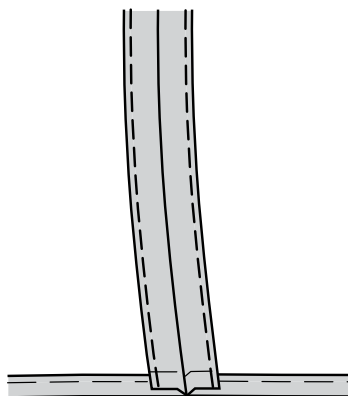
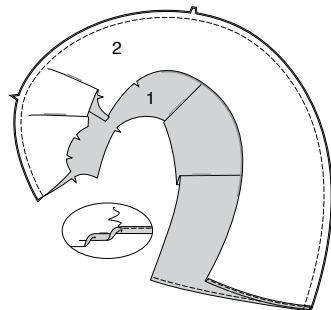
SEWING DIRECTIONS

DRESS

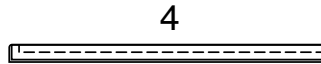
NOTE: Garment is designed to be reversible, front to back.

FRONT

1. NARROW HEM lower edges of **RIGHT FRONT (1)** and **LEFT FRONT (2)** sections. With right sides together, stitch seam in front sections, matching notches. Press seam open. To form casing for elastic, stitch 1/2" (1.3cm) from each side of finished seam.



2. With right sides together, fold **TIE END (4)** sections in half lengthwise, having raw edges even. Stitch outer edge in a 3/8" (1cm) seam, leaving one end open. Trim.



3. Turn tie right side out. Press. Turn under 1/4" (6mm) on free ends of tie. Baste raw edges together.



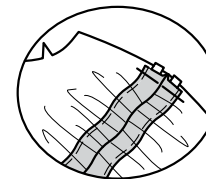
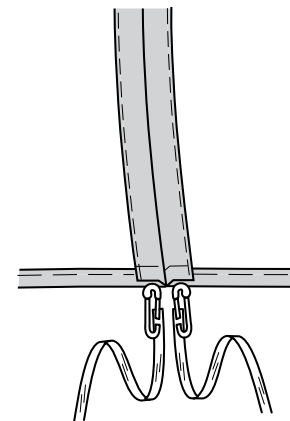
4. Cut two pieces of elastic the length of **ELASTIC GUIDE FOR FRONT (5)**. Transfer seam allowance markings.



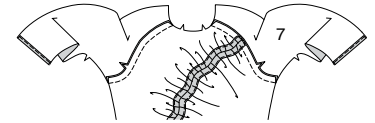
5. For each tie, pin one end of elastic to basted edge of tie, overlapping seam allowances. Stitch ends of elastic and tie together securely, as shown.



6. Attach a safety pin to free end of elastic. Insert free end of elastic through each opening in casing, matching upper seam allowances. Baste upper ends of elastic in place. **NOTE:** Remaining ties will be used in later steps.

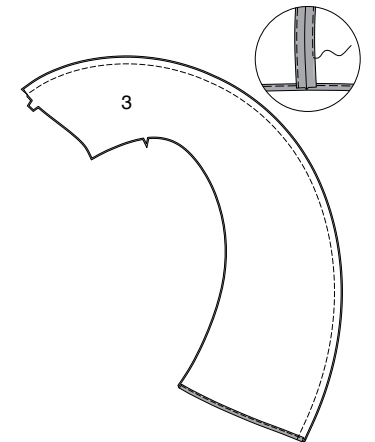


7. NARROW HEM lower edges of **FRONT SLEEVE (7)** sections. With right sides together pin sleeve to armhole edges of front, matching notches. Stitch, catching in ends of elastic on right front. Trim away ends of elastic. Press seam toward sleeve.



BACK

8. NARROW HEM lower edges of **BACK (3)** sections. With right sides together, stitch center back seam in back sections, matching notches. Press seam open. To form casing for elastic, stitch 1/2" (1.3cm) from each side of finished seam.



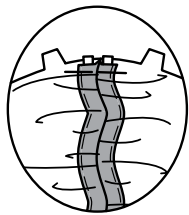
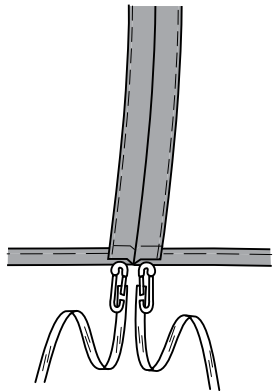
9. Cut two pieces of elastic the length of **ELASTIC GUIDE FOR BACK (6)**. Transfer seam allowance markings.



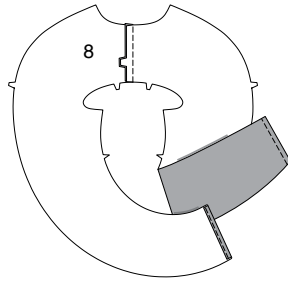
10. For each tie, pin one end of elastic to basted edge of tie, overlapping seam allowances. Stitch ends of elastic and tie together securely, as shown.



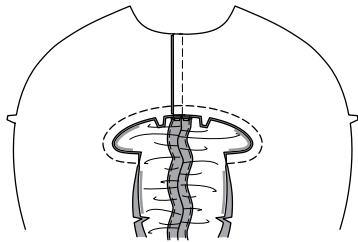
11. Attach a safety pin to free end of elastic. Insert free end of elastic through each opening in casing, matching upper seam allowances. Baste upper ends of elastic in place.



12. Stitch center back seam of yoke and SLEEVE BACK (8) sections. Press seam toward left back. **NARROW HEM** lower edge.

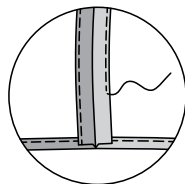
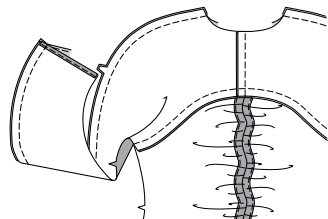


13. With right sides together pin yoke to upper edge of back matching notches. Stitch, catching in ends of elastic at center back. Trim away ends of elastic. Press seam toward back.



SHOULDER SEAMS AND NECK FACING

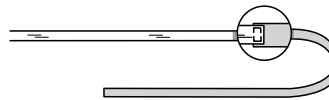
14. With right sides together, stitch front to back at shoulder seams. Matching notches. Press seam open. To form casing for elastic, stitch 1/2" (1.3cm) from each side of finished seam.



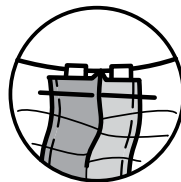
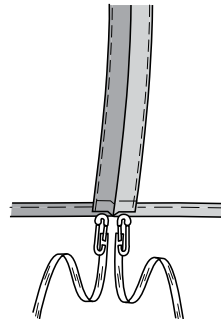
15. Cut four pieces of elastic the length of ELASTIC GUIDE FOR SLEEVE (9). Transfer seam allowance markings.



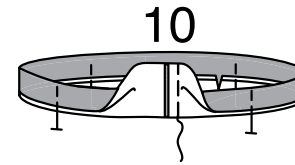
16. For each tie, pin one end of elastic to basted edge of tie, overlapping seam allowances. Stitch ends of elastic and tie together securely, as shown.



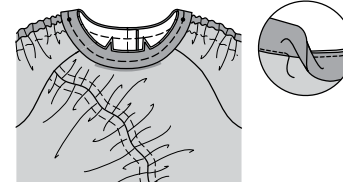
17. Attach a safety pin to free end of elastic. Insert free end of elastic through each opening in casing, matching upper seam allowances. Baste upper ends of elastic in place.



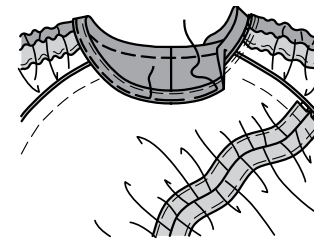
18. Stitch ends of NECK FACING (10) together. With wrong sides together, fold neck facing in half lengthwise. Press lightly. Pin raw edges together.



19. Pin facing to neck edge, placing small dots at shoulder seams, matching centers back and notches. Stitch. Trim. **UNDERSTITCH** facing.

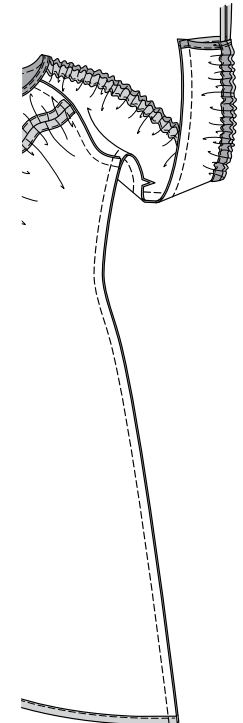


20. Turn facing to inside, Press. Baste in place. Stitch as basted.

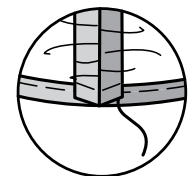


FINISHING

21. Stitch front to back at entire underarm and sleeve seam, matching armhole seams.



22. To finish lower edges of seam allowances, diagonally fold under corners and **SLIPSTITCH** to hem, as shown.





Congrats!

You've completed your sewing adventure

**SHARE
YOUR** LOOK



Post your pattern and tag us
@simplicity_creative_group and **#knowMepatterns**
for a chance to be featured on our social media.

Look for more PDF patterns at **simplicity.com**

Have a question or need help with your sewing project call us at
1-800-782-0323

