

@beautejadore



>> MISSES' KNIT DRESS IN TWO LENGTHS AND WOVEN PANTS  
 SKILL LEVEL: EASY

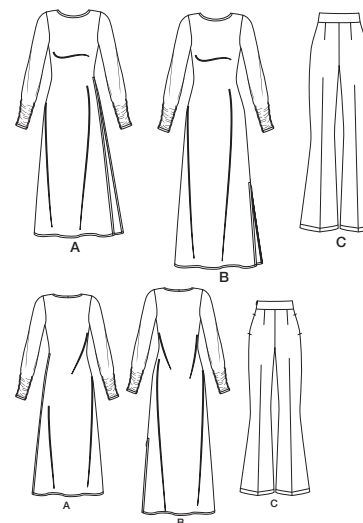


### THINGS YOU NEED:

- > **A,B:** 1 yd. (0.90m) of 1/4" (6mm) elastic. **Also for B:** One 24" (61cm) zipper.
- C:** One 9" (23cm) invisible zipper, one hook and eye (optional).

### SUGGESTED FABRICS:

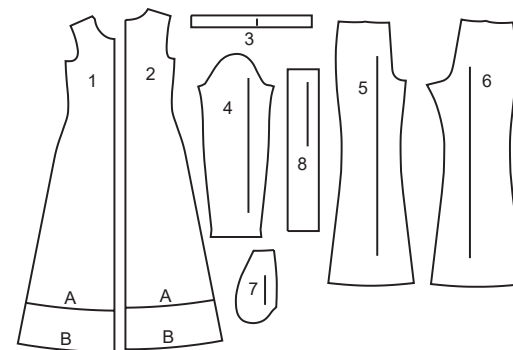
- > **A,B:** Stretch Knits only such as Cotton, ITY, Jersey, Modal, Ribbed, Sweater. See Stretch Gauge. **C:** Cotton Blends, Lightweight Denim, Lightweight Wools, Linen Blends, Stretch Wovens. **Lining C:** Cotton Blends, Polyester Blends. **Interfacing C:** Lightweight Fusible.



Your printed tile pieces should be assembled before you move on to this step!

### PIECES (8)

- 1 FRONT-A,B (c.l. A)
- 2 BACK-A,B (c.l. A)
- 3 NECKBAND-A,B
- 4 SLEEVE-A,B
- 5 FRONT-C
- 6 BACK-C
- 7 POCKET-C
- 8 WAISTBAND-C



## STRETCH GAUGE - MEASURING FABRIC STRETCH

Whenever you see a minimum stretch requirement on one of the sewing patterns, it is important that you measure the fabric stretch in both length and width!



### YARDAGE CHART

SIZES	8	10	12	14	16	18	20	22	24	26	
<b>DRESS A</b>											
60"*	2 <sup>3</sup> / <sub>8</sub>	2 <sup>3</sup> / <sub>8</sub>	2 <sup>3</sup> / <sub>8</sub>	2 <sup>3</sup> / <sub>8</sub>	2 <sup>3</sup> / <sub>8</sub>	2 <sup>3</sup> / <sub>4</sub>	3	3	3	3	yds.
150cm*	2.20	2.20	2.20	2.20	2.20	2.50	2.70	2.70	2.70	2.70	m.
<b>DRESS B</b>											
60"*	2 <sup>5</sup> / <sub>8</sub>	2 <sup>3</sup> / <sub>4</sub>	2 <sup>7</sup> / <sub>8</sub>	3 <sup>1</sup> / <sub>8</sub>	3 <sup>3</sup> / <sub>8</sub>	3 <sup>3</sup> / <sub>8</sub>	3 <sup>3</sup> / <sub>8</sub>	3 <sup>3</sup> / <sub>8</sub>	3 <sup>3</sup> / <sub>8</sub>	3 <sup>1</sup> / <sub>2</sub>	yds.
150cm*	2.40	2.50	2.50	2.90	3.10	3.10	3.10	3.10	3.10	3.20	m.
<b>PANTS C</b>											
45"*	2 <sup>5</sup> / <sub>8</sub>	2 <sup>5</sup> / <sub>8</sub>	2 <sup>5</sup> / <sub>8</sub>	2 <sup>5</sup> / <sub>8</sub>	2 <sup>3</sup> / <sub>4</sub>	2 <sup>3</sup> / <sub>4</sub>	2 <sup>3</sup> / <sub>4</sub>	2 <sup>3</sup> / <sub>4</sub>	2 <sup>7</sup> / <sub>8</sub>	3	yds.
60"*	2 <sup>3</sup> / <sub>8</sub>	2 <sup>3</sup> / <sub>8</sub>	2 <sup>3</sup> / <sub>8</sub>	2 <sup>3</sup> / <sub>8</sub>	2 <sup>1</sup> / <sub>2</sub>	2 <sup>5</sup> / <sub>8</sub>	2 <sup>3</sup> / <sub>4</sub>	2 <sup>3</sup> / <sub>4</sub>	2 <sup>3</sup> / <sub>4</sub>	2 <sup>3</sup> / <sub>4</sub>	"
115cm*	2.40	2.40	2.40	2.40	2.40	2.50	2.50	2.50	2.60	2.60	m.
150cm*	2.20	2.20	2.20	2.20	2.30	2.40	2.50	2.50	2.50	2.50	"
<b>LINING C (POCKETS)</b>											
45"**	1/2	1/2	1/2	1/2	1/2	1/2	1/2	1/2	1/2	1/2	yds.
115cm**	0.50	0.50	0.50	0.50	0.50	0.50	0.50	0.50	0.50	0.50	m.
<b>INTERFACING C</b>											
20"	7/8	7/8	1	1	1 <sup>1</sup> / <sub>8</sub>	1 <sup>1</sup> / <sub>8</sub>	1 <sup>1</sup> / <sub>8</sub>	1 <sup>1</sup> / <sub>4</sub>	1 <sup>1</sup> / <sub>4</sub>	1 <sup>3</sup> / <sub>8</sub>	yds.
51cm	0.80	0.80	0.90	0.90	0.90	1.00	1.00	1.10	1.10	1.30	m.

## FINISHED GARMENT MEASUREMENTS

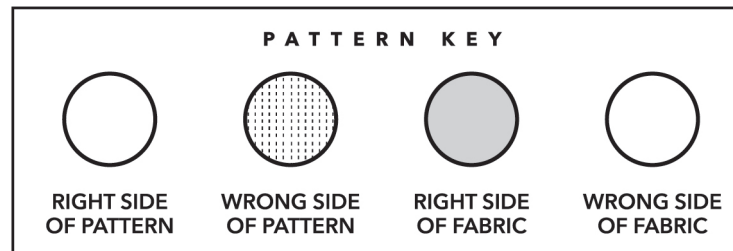
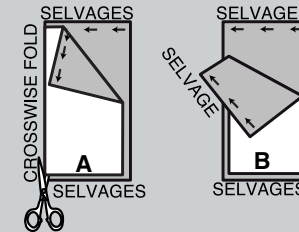
SIZES	8	10	12	14	16	18	20	22	24	26	
<b>A,B BUST</b>	29	30	31½	33½	35½	37½	39½	41½	43½	45½	in.
	74	76	80	85	90	95	100	105	110	116	cm.
<b>A,B WAIST</b>	28	29	30½	32½	34½	36½	38½	40½	42½	44½	in.
	71	74	77	83	88	93	98	103	108	113	cm.
<b>C WAIST</b>	25	26	27½	29½	31½	33½	35½	37½	39½	41½	in.
	64	66	70	75	80	85	90	95	100	105	cm.
<b>A,B HIP</b>	37½	38½	40	42	44	46	48	50	52	54	in.
	95	98	102	107	112	117	122	127	132	137	cm.
<b>C HIP</b>	34½	35½	37	39	41	43	45	47	49	51	in.
	88	90	94	99	104	109	114	119	124	130	cm.
<b>WIDTH, LOWER EDGE</b>											
<b>DRESS A</b>	56	57	58½	60½	62½	64½	66½	68½	70½	72½	in.
	142	145	149	154	159	164	169	174	179	184	cm.
<b>DRESS B</b>	61½	62½	64	66	68	70	72	74	76	78	in.
	156	159	163	168	173	178	183	188	193	198	cm.
<b>WIDTH, EACH LEG</b>											
<b>PANTS C</b>	26½	27	27¾	28¾	29¾	30¾	31¾	32¾	33¾	34¾	in.
	67	69	70	73	76	78	81	83	86	88	cm.
<b>FINISHED BACK LENGTH FROM BASE OF NECK</b>											
<b>DRESS A</b>	47¾	48	48¼	48½	48¾	49	49¼	49½	49¾	50	in.
	121	122	123	123	124	124	125	126	126	127	cm.
<b>DRESS B</b>	54¾	55	55¼	55½	55¾	56	56¼	56½	56¾	57	in.
	139	140	140	141	142	142	143	144	144	145	cm.
<b>FINISHED SIDE LENGTH FROM WAIST</b>											
<b>PANTS C</b>	41¾	42	42¼	42½	42¾	43	43¼	43½	43¾	44	in.
	106	107	107	108	109	109	110	110	111	112	cm.

**BODY MEASUREMENTS**

<b>SIZES</b>	<b>8</b>	<b>10</b>	<b>12</b>	<b>14</b>	<b>16</b>	<b>18</b>	<b>20</b>	<b>22</b>	<b>24</b>	<b>26</b>	
<b>BUST</b>	31½	32½	34	36	38	40	42	44	46	48	in.
	80	83	87	92	97	102	107	112	117	122	cm.
<b>WAIST</b>	24	25	26½	28	30	32	34	37	39	41	in.
	61	64	67	71	76	81	87	94	99	104	cm.
<b>HIP-9" (23CM) BELOW WAIST</b>	33½	34½	36	38	40	42	44	46	48	50	in.
	85	88	92	97	102	107	112	117	122	127	cm.
<b>BACK-NECK TO WAIST</b>	15¾	16	16¼	16½	16¾	17	17¼	17½	17¾	18	in.
	40	40.5	41.5	42	42.5	43	44	44.5	45	46	cm.

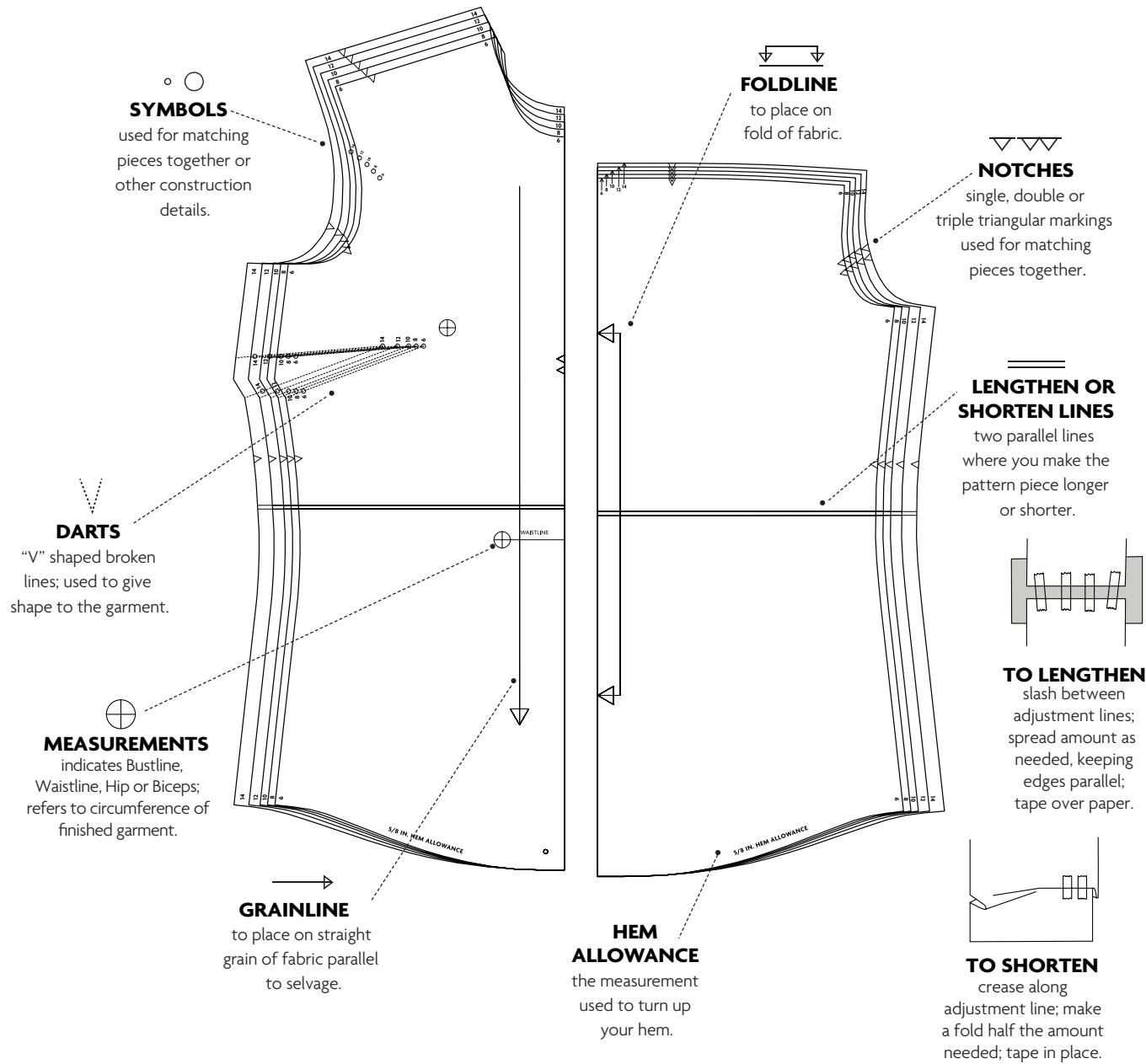
## CUTTING AND MARKING

- > **SHRINK FABRIC** if not labeled pre-shrunk. Press.
- > **CIRCLE LAYOUT** for View, Size, Fabric Width.
- > Use **WITH NAP** layout for fabrics with one-way designs, nap, pile or surface shading. Because most knits have surface shading, a with nap layout is used.
- > For **DOUBLE THICKNESS (WITH FOLD)**, fold fabric with right sides together.
- > \***DOUBLE THICKNESS (WITHOUT FOLD)**, for fabrics with nap, fold fabric crosswise, right sides together. Mark as shown. Cut along crosswise fold of fabric (A). Turn upper layer 180° so arrows go in same direction and place over lower layer, right sides together (B).
- > For **SINGLE THICKNESS**, place fabric right side up. (For Fur Pile fabrics, place pile side down.)



- > Before **CUTTING**, place all pieces on fabric according to layout. Pin.  
(Layouts show approximate position of pattern pieces; position may vary according to your pattern size.)
- > ★ Cut other pieces first, allowing enough fabric to cut this piece. Open fabric. Cut piece on single layer of fabric with piece face up on right side of fabric.
- > Cut accurately, cutting notches outward.
- > Before removing pattern, **TRANSFER MARKINGS** and lines of construction to **WRONG SIDE** of fabric, using Pin and Chalk Pencil method or Tracing Paper and Dressmaker Wheel. Markings needed on right side of fabric should be thread traced.  
**NOTE:** Broken-line boxes (a! b! c!) in layouts represent pieces cut by measurements provided.
- > Prewash your fabric using a method that's suitable for the fabric type.
- > Fold fabric with right sides together, matching **SELVAGES**.
- > Pin your pattern pieces to the fabric as shown below and cut them out using a sharp pair of dressmaker's shears.

**PATTERN MARKINGS**

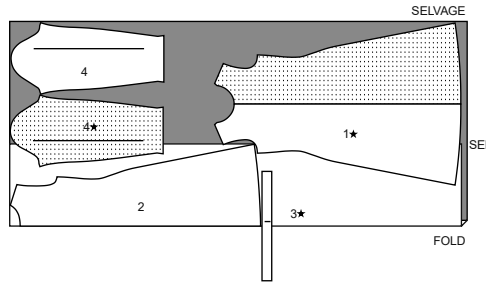


**CUTTING LAYOUTS**

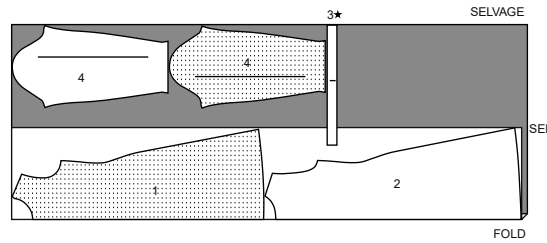
**DRESS A**

use pieces: 1 2 3 4

60" (150 cm)  
with nap  
sizes 8 10 12 14 16 18



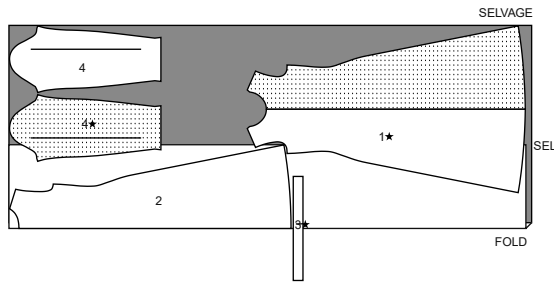
60" (150 cm)  
with nap  
sizes 20 22 24 26



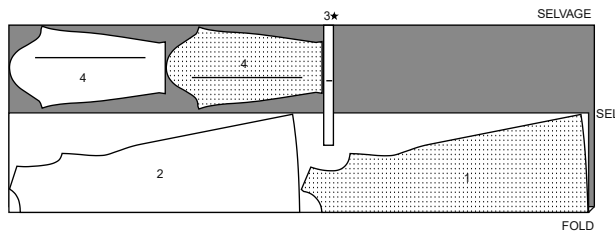
**DRESS B**

use pieces: 1 2 3 4

60" (150 cm)  
with nap  
sizes 8 10 12 14



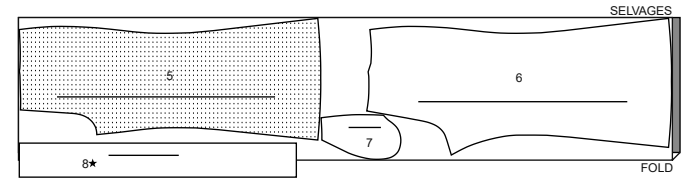
60" (150 cm)  
with nap  
sizes 16 18 20 22 24 26



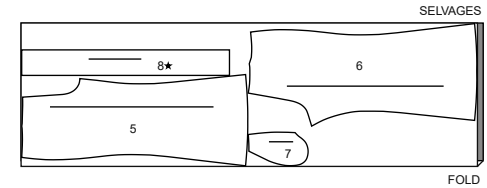
**PANTS C**

use pieces: 5 6 7 8

45" (115 cm)  
with nap  
all sizes



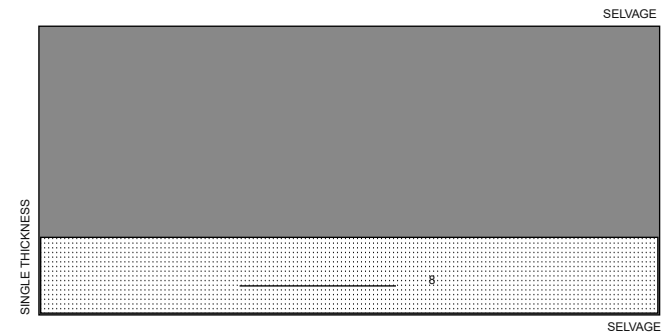
60" (150 cm)  
with nap  
all sizes



**INTERFACING C**

use piece: 8

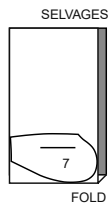
20" (51 cm)  
all sizes



**LINING C (POCKETS)**

use piece: 7

45" (115 cm)  
without nap  
all sizes

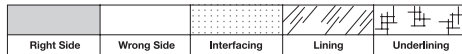


PATTERN PIECES WILL BE IDENTIFIED BY NUMBERS THE FIRST TIME THEY ARE USED.

## SEWING INFORMATION

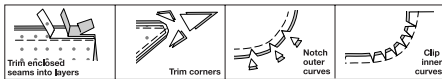
$\frac{5}{8}$ " (1.5cm) SEAM ALLOWANCES ARE INCLUDED, (unless otherwise indicated)

### ILLUSTRATION SHADING KEY



Pin or baste seams, right side together, matching notches. Fit garment before stitching major seams.

Press seam allowances flat; then open unless otherwise stated. Clip where necessary so they lie flat.



## GLOSSARY

Sewing terms appearing in **BOLD TYPE** in Sewing Instructions are explained below.

**DOUBLE - STITCH** - Stitch seam along seamline; stitch again  $\frac{1}{4}$ " (6mm) away in seam allowance using a straight stitch OR zigzag stitch; trim close to second stitching OR overlock seam.

**EASESTITCH** - Stitch along seamline, using long machine stitches. Pull thread ends when adjusting to fit.

NOTE: For sleeve caps, make a second row of long machine stitches  $\frac{1}{4}$ " (6mm) away in seam allowance. for more control.

**EDGESTITCH** - Stitch close to finished edge or seam.

**FINISH** - Stitch  $\frac{1}{4}$ " (6mm) from raw edge and finish with one of the following: (1) Pink OR (2) Overcast OR (3) Turn in along stitching and stitch close to fold OR (4) Overlock.

**NARROW HEM** - Turn in hem; press, easing in fullness if necessary. Open out hem. Turn in again so raw edge is along crease; press. Turn in along crease; stitch.

OPTIONAL FOR HEMS: Apply Seam Binding.

**SLIPSTITCH** - Slide needle through a folded edge, then pick up a thread of underneath fabric.

**STAYSTITCH** - Stitch  $\frac{1}{8}$ " (3mm) from seamline in seam allowance (usually  $\frac{1}{2}$ " (1.3cm) from raw edge).

**TOPSTITCH** - On outside, stitch  $\frac{1}{4}$ " (6mm) from edge, seam or previous stitching, using presser foot as guide, or stitch where indicated in instructions.

**UNDERSTITCH** - Open out facing or underside of garment; stitch to seam allowance close to seam.



@beautejadore

## SEWING DIRECTIONS

### DRESS A, B

**NOTE:** Stretch fabric evenly in front and back of needle while stitching.

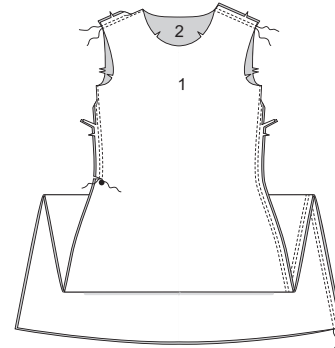
**NOTE:** Under each sub-heading, the first View will be illustrated, unless otherwise indicated.

## FRONT AND BACK

### View A:

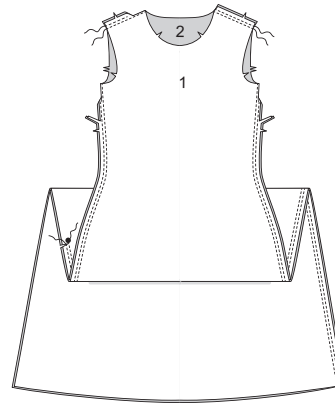
**1.** Stitch FRONT (1) to BACK (2) at shoulders and right side in **DOUBLE-STITCHED** seam. Press seams toward back.

Pin front to back at left side edge. Stitch, ending at large dot. Clip left side seam allowance  $\frac{3}{8}$ " (1cm) above large dot. Stitch again  $\frac{1}{4}$ " (6mm) away in seam allowance above clip. Trim close to second stitching. Press seam toward back.



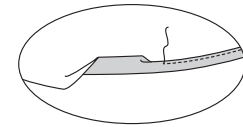
### View B:

**2.** Stitch FRONT (1) to BACK (2) at shoulders and right side in **DOUBLE-STITCHED** seam. Pin front to back at left side edge. Stitch, ending at large dot. Clip left side seam allowance  $\frac{3}{8}$ " (1cm) above large dot. Stitch again  $\frac{1}{4}$ " (6mm) away in seam allowance above clip. Trim close to second stitching. Press seam toward back.



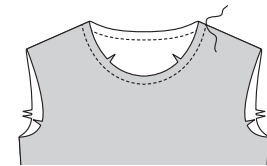
### Views A, B:

**3.** Make **NARROW HEM** at lower edge of dress.

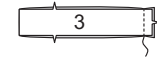


## NECK BAND

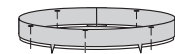
**4.** **STAYSTITCH** neck edge of dress.



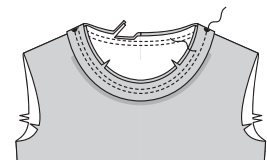
**5.** Stitch ends of **NECK BAND** (3) together.



**6.** With wrong sides together, fold neck band in half lengthwise; press lightly. Pin raw edges together.

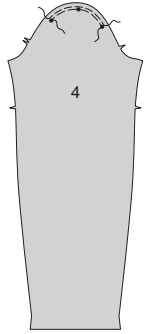


**7.** Pin neck band to neck edge, matching centers, placing small dots at shoulder seams. Stitch, stretching neck band to fit. Stitch again  $\frac{1}{4}$ " (6mm) away in seam allowance. Trim close to stitching. Press seam down, pressing band out.



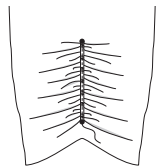
## SLEEVE AND FINISHING

**8. EASESTITCH** upper edge of SLEEVE (4) between outer small dots.



## SLEEVE AND FINISHING

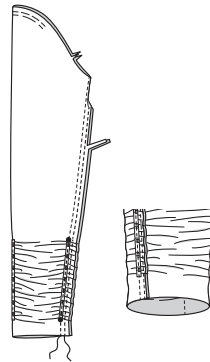
**9.** Cut four pieces of elastic 6" (15cm) long. For each sleeve, on wrong side, pin one piece of elastic to sleeve, between small dots, centering over stitching line. Stitch along center of elastic, stretching elastic while stitching. **NOTE:** Remainder of elastic will be used later.



**10.** Stitch sleeve seam, ending stitching at upper small dot. Baste seam below upper small dot. Press seam allowances flat.

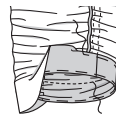


**11.** For each sleeve, pin one piece of elastic to sleeve seam, between small dots, centering over basting. Stitch along center of elastic, stretching elastic while stitching, connecting with previous stitching. Stitch again 1/4" (6mm) away in seam allowance. Trim close to stitching, being careful not to cut elastic. Press seam toward back.

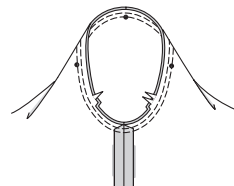


**12.** Turn up sleeve hem. Baste close to fold. Turn in 1/4" (6mm) on raw edge. Baste hem in place close to upper edge. Press.

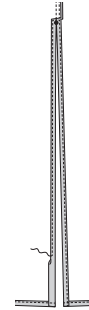
**TOPSTITCH** hem along upper basting.



**13.** With right sides together, pin sleeve into armhole, placing center small dot at shoulder seam, matching remaining small dots. Adjust ease; baste. Stitch. Stitch again 1/4" (6mm) away in seam allowances. Trim close to second stitching. Press seam allowances flat. Turn seam toward sleeve.

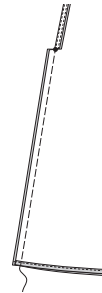


**14.** Make 5/8" (1.5cm) **NARROW HEM** at left side opening edges, tapering to nothing above large dot. Pivot across seam 1/4" (6mm) above large dot when stitching.



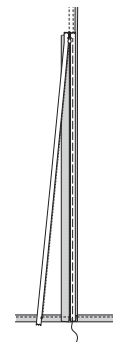
**View B:**

**15.** Baste left side opening edges together along seamline below large dot. Press.

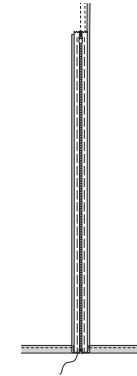


**16.** Open zipper; place face down on extended seam allowance, placing zipper stop at large dot and zipper teeth on seamline. Baste in center of zipper tape, keeping dress free.

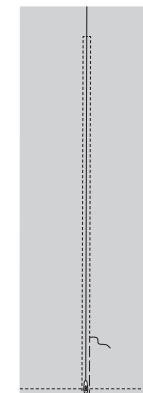
Turn in end of zipper tape, over hem, as shown. Press. **SLIPSTITCH** ends.



**17.** Close zipper; turn pull tab down. Spread back flat. Baste a scant 1/4" (6mm) from zipper teeth and across upper edge. Turn in end of zipper tape over hem. **SLIPSTITCH** ends.



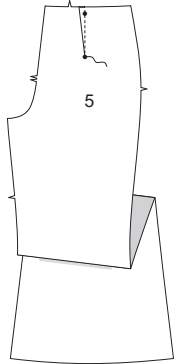
**18.** On outside, stitch along basting through all thicknesses, as shown, using a zipper foot. Remove basting.



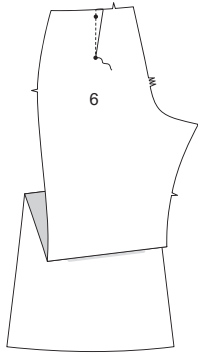
## PANTS C

### FRONT AND BACK

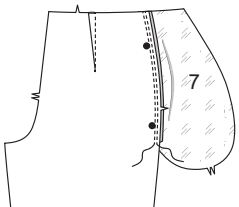
- 1.** Stitch dart in FRONT (5). Press dart toward center.



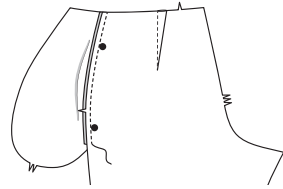
- 2.** Stitch dart in BACK (6). Press dart toward center.



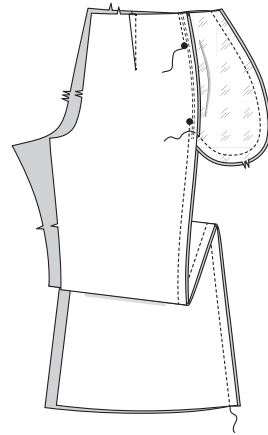
- 3.** Stitch one POCKET (7) section (lining) to right pants front at side in a 1/4" (6mm) seam. Press seam toward pocket. **UNDERSTITCH** pocket.



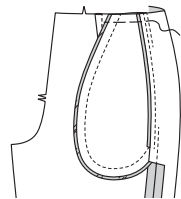
- 4.** Stitch one pocket section (fabric) to right back at side in a 1/4" (6mm) seam. Press seam toward pocket. **NOTE:** Remaining pocket sections will be used later.



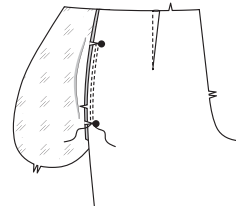
- 5.** Stitch right front and back together at side, leaving open between large dots. Stitch pocket edges together to side seams.



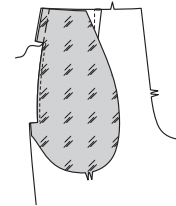
- 6.** Clip back seam allowances below pocket. Turn pocket toward front along seamline; press. Baste across upper edge.



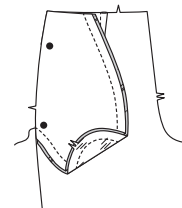
- 7.** Pin remaining pocket section (lining) to left pants front at side. Stitch between large dots in a 1/4" (6mm) seam. Clip seam allowances to large dots, as shown.



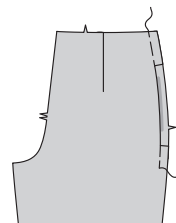
- 8.** Turn pocket to inside; press. Baste raw edges above upper clip, having wrong sides together, keeping pocket free, as shown.



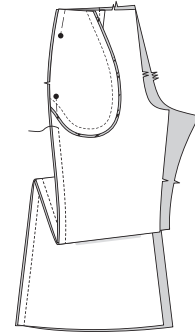
- 9.** With right sides together, pin remaining pocket section (fabric) to left pocket lining. Stitch outer edge, as shown.



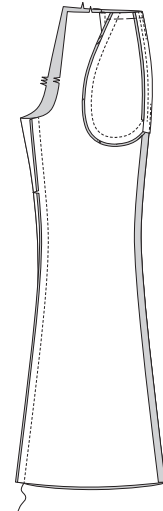
- 10.** Turn in pocket. Baste across upper edge and side edge below lower clip.



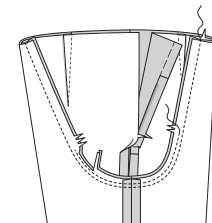
- 11.** Stitch left front and left back together at side, leaving open from 3" (7.5cm) below lower large dot to upper edge.



- 12.** Stitch front to back at inner leg seam.

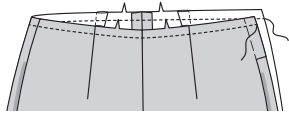


- 13.** For crotch seam, turn one pants leg right side out; slip inside remaining pants leg. Stitch crotch seam. Stitch again 1/4" (6mm) away in seam allowance along curve, as shown. Trim close to second stitching.

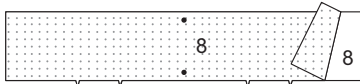


## WAISTBAND, ZIPPER AND FINISHING

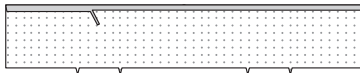
**14. STAYSTITCH** upper edge of pants.



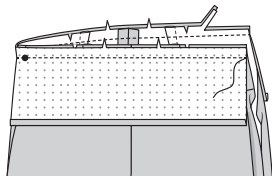
**15.** Pin INTERFACING to wrong side of WAISTBAND (8). Fuse, following manufacturer's instructions.



**16.** Turn in 1/2" (1.3cm) on long unnotched edge of waistband. Press. Trim pressed seam allowance to 3/8" (1cm).



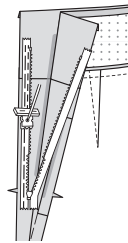
**17.** With right sides together, pin waistband to upper edge of pants, matching centers and small dot to side seam, clipping pants where necessary. Stitch. Trim. Press seam toward pants.



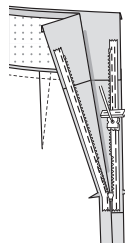
**NOTE:** The zipper is longer than the zipper opening and will be adjusted after the zipper is inserted.

**NOTE:** Stitch the invisible zipper using an invisible zipper foot.

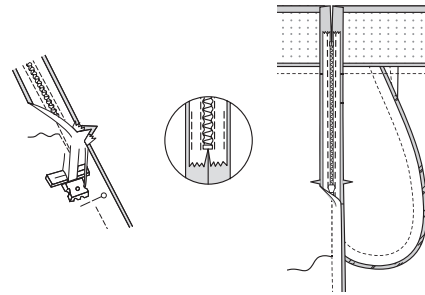
**18.** Open the zipper and press the tape using a cool iron. On OUTSIDE, pin RIGHT side of the zipper face down on the RIGHT side of the zipper opening. Have the coil along the seam line, the tape within the seam allowance and the top stop 1/8" (3mm) below waistband foldline, as shown. Hand-baste along center of the tape. Position zipper foot at the top of the zipper with RIGHT groove of the foot over coil. Stitch along tape to lower large dot. Back-stitch to reinforce.



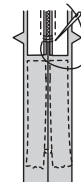
**19.** Pin the remaining half of the zipper to the LEFT side of the zipper opening in same manner. Make sure the upper edges of the garment are even. Hand-baste along the center of the tape. Position zipper foot at the top of the zipper with LEFT groove over the coil. Stitch along tape to lower large dot, keeping front pocket opening free. Back-stitch to reinforce.



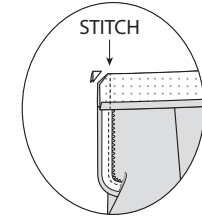
**20.** Close zipper and check that it is invisible from the OUTSIDE. Pull the free ends of the zipper tape away from the seam allowance. Pin remaining left side seam together below zipper. Position zipper foot all the way to the LEFT so the needle goes down through the outer notch of the foot. Start stitching seam 1/4" (6mm) above lowest stitch and slightly to the LEFT. Stitch remainder of seam, connecting with previous stitching.



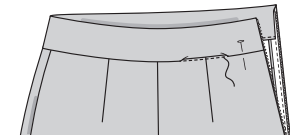
**21.** If the zipper is longer than the opening, using a strong thread, hand-sew a few small stitches across ends of coils at end of opening. Trim away lower end of zipper tape to within 5/8" (1.5cm) of hand-stitches. If you prefer, open out each seam allowance at end of zipper and stitch tape to seam allowance.



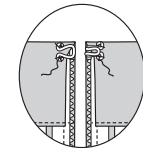
**22.** Open out left side opening edges of pants, rolling the zipper teeth away from the opening edge. With right sides together, fold waistband along foldline. Pin left side opening edges together. Using an adjustable zipper foot, stitch 1/2" (1.3cm) from left side edges, keeping zipper teeth free. Trim corners. Do not trim left side edges.



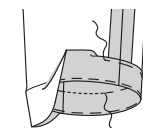
**23.** Turn waistband and left side edges to INSIDE, rolling zipper teeth back in place; press. On outside, spread waistband seam with fingers until previous stitching is visible. Stitch on top of previous stitching.



**24.** If you prefer, sew hook and eye to upper edge of left side opening as shown.



**25.** Turn up pants hem. Baste close to fold. Turn in 1/4" (6mm) on raw edge. Baste hem in place close to upper edge. Press. **TOPSTITCH** hem along upper basting.





# Congrats!

You've completed your sewing adventure

---

**SHARE  
YOUR** LOOK



Post your pattern and tag us  
**@simplicity\_creative\_group** and **#knowmepatterns**  
for a chance to be featured on our social media.

Look for more PDF patterns at **simplicity.com**

Have a question or need help with your sewing project call us at  
1-800-782-0323

know**ME**  
by **design**