

ME2045



@thecornyrainbow



>> MISSES' DRESS
 SKILL LEVEL: AVERAGE

PDF
 ↓
PDF PATTERNS

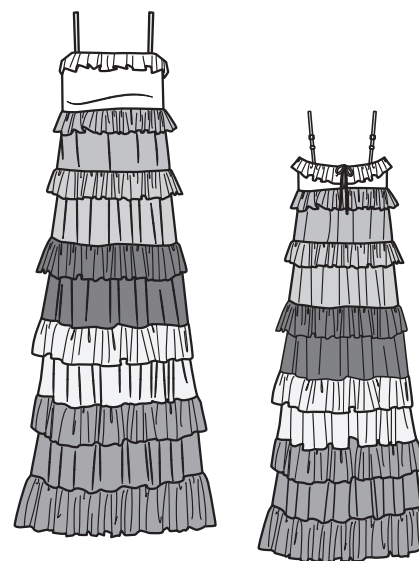
THINGS YOU NEED:

> One pair of ½" (1.3cm) bra strap sliders and rings.

SUGGESTED FABRICS:

> Lightweight Tulle, Netting. **Lining:** Cotton Blends, Polyester Blends.

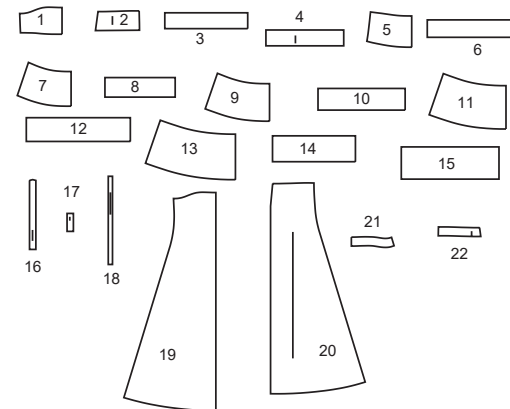
Interfacing: Lightweight Fusible.



Your printed tile pieces should be assembled before you move on to this step!

PIECES (22)

- 1 BODICE FRONT
- 2 BODICE BACK
- 3 FRONT RUFFLE
- 4 BACK RUFFLE
- 5 TIER 1
- 6 RUFFLE 1
- 7 TIER 2
- 8 RUFFLE 2
- 9 TIER 3
- 10 RUFFLE 3
- 11 TIER 4
- 12 RUFFLE 4
- 13 TIER 5
- 14 RUFFLE 5
- 15 LOWER RUFFLE
- 16 FRONT STRAP
- 17 BACK STRAP
- 18 TIE END
- 19 SLIP FRONT
- 20 SLIP BACK
- 21 FRONT FACING
- 22 BACK FACING



YARDAGE CHART

SIZES	8	10	12	14	16	18	20	22	24	26	
DRESS (BODICE, UPPER RUFFLE)											
60"*	½	½	½	½	⅝	⅝	⅝	⅝	⅝	⅝	yds.
150cm*	0.50	0.50	0.50	0.50	0.50	0.50	0.50	0.50	0.60	0.60	m.
CONTRAST 1 (TIER 1, RUFFLE 1)											
60"*	⅝	⅝	⅝	⅝	⅝	⅝	⅝	⅝	⅝	⅝	yds.
150cm*	0.60	0.60	0.60	0.60	0.60	0.60	0.60	0.60	0.60	0.60	m.
CONTRAST 2 (TIER 2, RUFFLE 2)											
60"*	⅞	⅞	⅞	⅞	⅞	1⅛	1⅛	1⅛	1⅛	1⅛	yds.
150cm*	0.80	0.80	0.80	0.80	0.80	1.00	1.00	1.00	1.00	1.00	m.
CONTRAST 3 (TIER 3, RUFFLE 3)											
60"*	1⅛	1⅛	1⅛	1⅛	1⅛	1⅛	1⅛	1⅛	1⅛	1⅛	yds.
150cm*	1.00	1.00	1.00	1.00	1.00	1.00	1.00	1.00	1.00	1.00	m.
CONTRAST 4 (TIER 4, RUFFLE 4)											
60"*	1¼	1¼	1¼	1¼	1¼	1¼	1¼	1¼	1¼	1¼	yds.
150cm*	1.20	1.20	1.20	1.20	1.20	1.20	1.20	1.20	1.20	1.20	m.
CONTRAST 5 (TIER 5, RUFFLE 5, LOWER RUFFLE)											
60"*	2½	2½	2½	2½	2½	2½	2½	2½	2½	2½	yds.
150cm*	2.20	2.20	2.20	2.20	2.20	2.20	2.20	2.20	2.20	2.20	m.
LINING											
60"*	2¼	2¼	2¼	2¼	2¼	2⅜	2½	2½	2⅝	2¾	yds.
150cm**	2.10	2.10	2.10	2.10	2.10	2.20	2.20	2.30	2.40	2.50	m.
INTERFACING											
20"	¾	¾	¾	¾	¾	⅞	⅞	⅞	⅞	⅞	yds.
51cm	0.60	0.70	0.70	0.70	0.70	0.70	0.80	0.80	0.80	0.80	m.

FINISHED GARMENT MEASUREMENTS

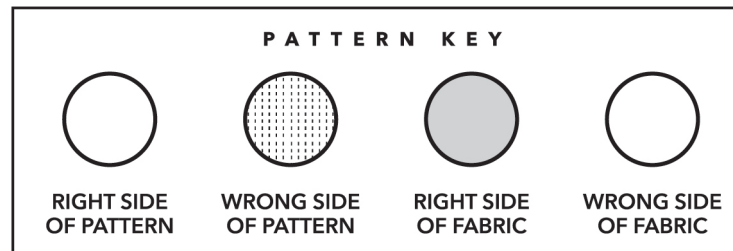
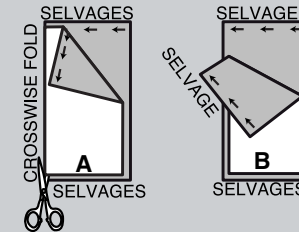
SIZES	8	10	12	14	16	18	20	22	24	26	
BUST	35¾	36¾	38¼	40¼	42¼	44¼	46¼	48¼	50¼	52¼	in.
	91	93	97	102	107	112	117	123	128	133	cm.
WAIST	38½	39½	41	43	45	47	49	51	53	55	in.
	98	100	104	109	114	119	124	130	135	140	cm.
WIDTH, LOWER EDGE											
DRESS (EXCL. RUFFLE)	83	84	85½	87½	89½	91½	93½	95½	97½	99½	ins.
	211	213	217	222	227	232	237	243	248	253	cm.
FINISHED BACK LENGTH FROM BASE OF NECK											
DRESS (INCL. RUFFLE)	57¾	58	58¼	58½	58¾	59	59¼	59½	59¾	60	in.
	147	147	148	149	149	150	150	151	152	152	cm.

BODY MEASUREMENTS

SIZES	8	10	12	14	16	18	20	22	24	26	
BUST	31½	32½	34	36	38	40	42	44	46	48	in.
	80	83	87	92	97	102	107	112	117	122	cm.
WAIST	24	25	26½	28	30	32	34	37	39	41	in.
	61	64	67	71	76	81	87	94	99	104	cm.
HIP-9" (23CM) BELOW WAIST	33½	34½	36	38	40	42	44	46	48	50	in.
	85	88	92	97	102	107	112	117	122	127	cm.
BACK WAIST LENGTH	15¾	16	16¼	16½	16¾	17	17¼	17½	17¾	18	in.
	40	40.5	41.5	42	42.5	43	44	44.5	45	46	cm.

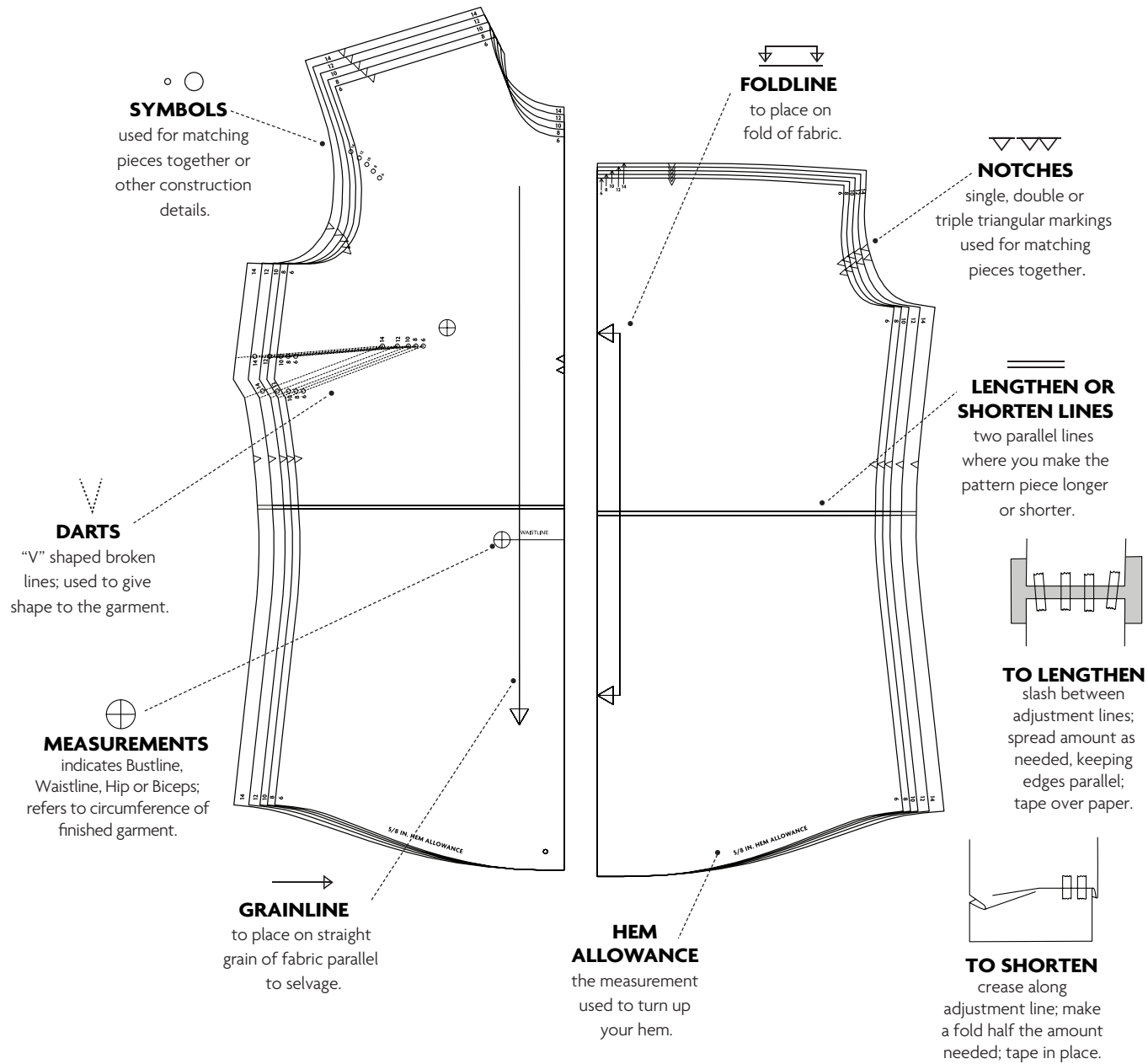
CUTTING AND MARKING

- > **SHRINK FABRIC** if not labeled pre-shrunk. Press.
- > **CIRCLE LAYOUT** for View, Size, Fabric Width.
- > Use **WITH NAP** layout for fabrics with one-way designs, nap, pile or surface shading. Because most knits have surface shading, a with nap layout is used.
- > For **DOUBLE THICKNESS (WITH FOLD)**, fold fabric with right sides together.
- > ***DOUBLE THICKNESS (WITHOUT FOLD)**, for fabrics with nap, fold fabric crosswise, right sides together. Mark as shown. Cut along crosswise fold of fabric (A). Turn upper layer 180° so arrows go in same direction and place over lower layer, right sides together (B).
- > For **SINGLE THICKNESS**, place fabric right side up. (For Fur Pile fabrics, place pile side down.)



- > Before **CUTTING**, place all pieces on fabric according to layout. Pin.
(Layouts show approximate position of pattern pieces; position may vary according to your pattern size.)
- > ★ Cut other pieces first, allowing enough fabric to cut this piece. Open fabric. Cut piece on single layer of fabric with piece face up on right side of fabric.
- > Cut accurately, cutting notches outward.
- > Before removing pattern, **TRANSFER MARKINGS** and lines of construction to **WRONG SIDE** of fabric, using Pin and Chalk Pencil method or Tracing Paper and Dressmaker Wheel. Markings needed on right side of fabric should be thread traced.
NOTE: Broken-line boxes (a! b! c!) in layouts represent pieces cut by measurements provided.
- > Prewash your fabric using a method that's suitable for the fabric type.
- > Fold fabric with right sides together, matching **SELVAGES**.
- > Pin your pattern pieces to the fabric as shown below and cut them out using a sharp pair of dressmaker's shears.

PATTERN MARKINGS

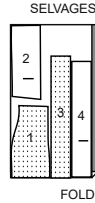


CUTTING LAYOUTS

DRESS: UPPER RUFFLE, BODICE

use pieces: 1 2 3 4

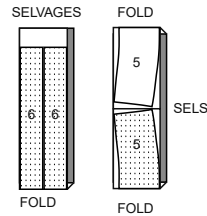
60" (150 cm)
with nap
all sizes



CONTRAST 1: TIER 1, RUFFLE 1

use pieces: 5 6

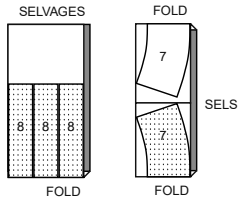
60" (150 cm)
with nap
all sizes



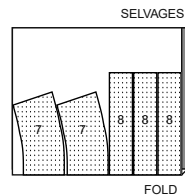
CONTRAST 2: TIER 2, RUFFLE 2

use pieces: 7 8

60" (150 cm)
with nap
sizes 8 10 12 14 16



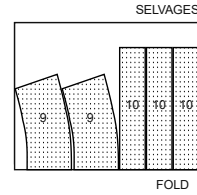
60" (150 cm)
with nap
sizes 18 20 22 24 26



CONTRAST 3: TIER 3, RUFFLE 3

use pieces: 9 10

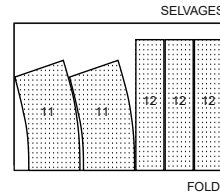
60" (150 cm)
with nap
all sizes



CONTRAST 4: TIER 4, RUFFLE 4

use pieces: 11 12

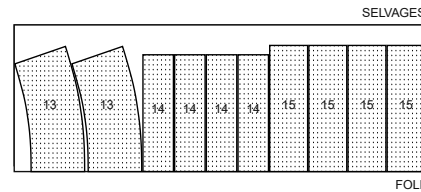
60" (150 cm)
with nap
all sizes



CONTRAST 5: TIER 5, RUFFLE 5, LOWER RUFFLE

use pieces: 13 14 15

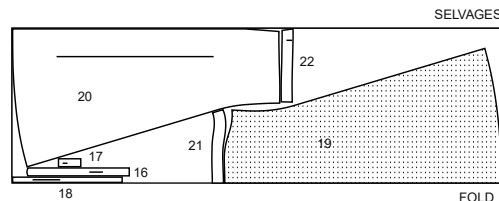
60" (150 cm)
with nap
all sizes



LINING: SLIP, SHOULDER STRAPS, TIES

use pieces: 16 17 18 19 20 21 22

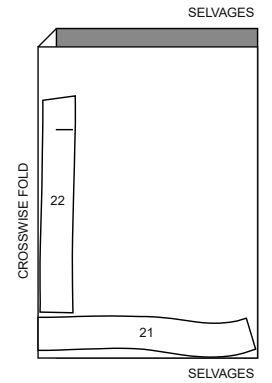
60" (150 cm)
without nap
all sizes



INTERFACING

use pieces: 21 22

20" (51 cm)
all sizes



PATTERN PIECES WILL BE IDENTIFIED BY NUMBERS THE FIRST TIME THEY ARE USED.

SEWING INFORMATION

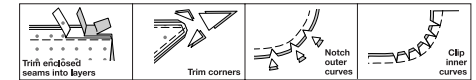
5/8" (1.5cm) SEAM ALLOWANCES ARE INCLUDED,
(unless otherwise indicated)

ILLUSTRATION SHADING KEY

Right Side	Wrong Side	Interfacing	Lining	Underlining

Pin or baste seams, right side together, matching notches. Fit garment before stitching major seams.

Press seam allowances flat; then open unless otherwise stated. Clip where necessary so they lie flat.



GLOSSARY

Sewing terms appearing in **BOLD TYPE** in Sewing Instructions are explained below.

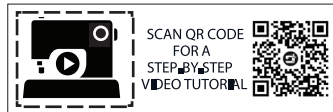
FINISH - Stitch 1/4" (6mm) from raw edge and finish with one of the following: (1) Pink OR (2) Overcast OR (3) Turn in along stitching and stitch close to fold OR (4) Overlock.

OPTIONAL FOR HEMS: Apply Seam Binding.

GATHER - Stitch along seamline and again 1/4" (6mm) away. In seam allowance, using long machine stitches. Pull thread ends when adjusting to fit.

NARROW HEM - Turn in hem; press, easing in fullness if necessary. Open out hem. Turn in again so raw edge is along crease; press. Turn in along crease; stitch.

UNDERSTITCH - Open out facing or underside of garment; stitch to seam allowance close to seam.



@thecornyrainbow

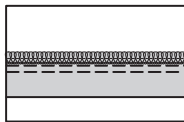
SEWING DIRECTIONS

GENERAL INSTRUCTIONS

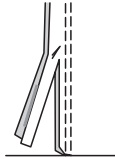
SEAM FINISHES FOR SHEER FABRICS

1. Seams can be finished with one of the three methods mentioned below. Choose the one you would like to use from the selections below:

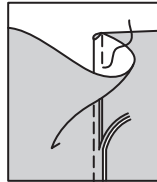
OVERLOCK/SERGE - Overlock over raw edges of seam, using an overlock/serger machine.



DOUBLE STITCHED SEAM- Stitch seam again 1/8" (3mm) from first stitching. Trim close to stitching. Press seam to one side.



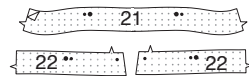
FRENCH SEAM- To make French seam, stitch first seam on OUTSIDE, a scant 1/4" (6mm) from seam line; trim close to stitching. Turn to INSIDE and stitch through seam allowance, encasing first seam.



DRESS

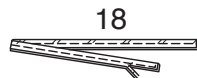
INTERFACING

2. Fuse INTERFACING to wrong side of each matching LINING section, following manufacturer's instructions.

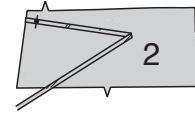


BODICE FRONT AND BACK

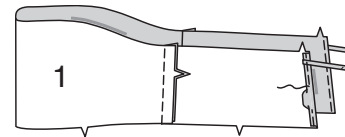
3. Fold TIE END (18) in half lengthwise, with wrong sides together. Stitch in a 1/4" (6mm) seam, leaving one edge open. Trim.



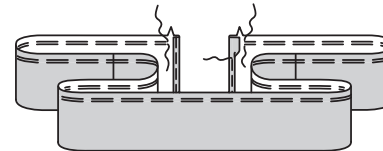
4. Turn tie right side out. Press. On outside, pin ties to BODICE BACK (2) sections placing one finished edge at small dot, having raw edges even. Baste.



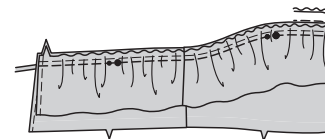
5. Stitch BODICE FRONT (1) to back at side seams. **NARROW HEM** back edges of bodice.



6. With right sides together, stitch FRONT RUFFLE (3) to BACK RUFFLE (4) at side seams. **NARROW HEM** back edges. **GATHER** upper edge of ruffle between notches.



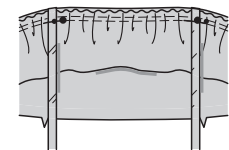
7. On outside, pin wrong side of ruffle to right side of bodice matching side seams and markings. Adjust gathers. Baste. Transfer small and large dot markings to ruffle.



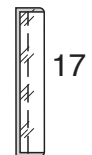
8. Fold FRONT STRAP (16) in half lengthwise, with right sides together. Stitch strap in a 1/4" (6mm) seam, leaving ends open. Trim.



9. Turn strap right side out. Press. On outside, pin strap to front matching small and large dots. Baste.



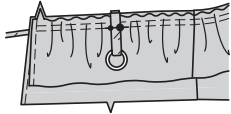
10. Fold BACK STRAP (17) in half lengthwise, with right sides together. Stitch strap in a 1/4" (6mm) seam, leaving ends open.



11. Turn strap right side out. Press. Slip one end of strap through one slider, bringing ends together; baste.

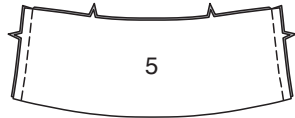


12. On outside, pin strap to back matching small and large dots. Baste.

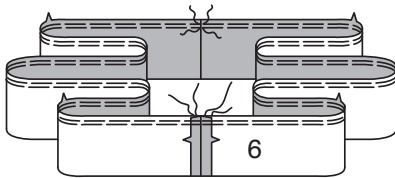


SKIRT FRONT AND BACK

13. With right sides together, stitch side seams of TIER 1 (5) sections.



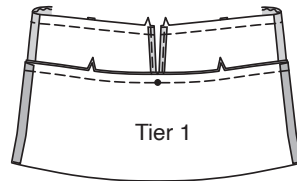
14. Stitch ends of RUFFLE (6) matching notches. **GATHER** upper edge of ruffle breaking stitching at seams.



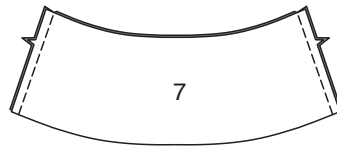
15. On outside, pin wrong side of ruffle to upper edge of tier matching notches and side seams. Adjust gathers. Baste.



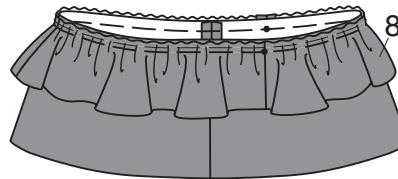
16. Pin bodice to upper edge of tier 1 matching notches and having back opening edges meet at large dots. Stitch. Press seam up.



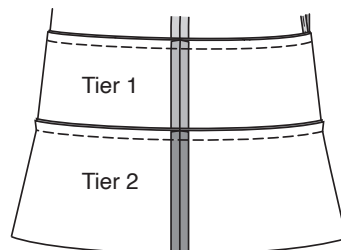
17. With right sides together, stitch side seams of TIER 2 (7) sections. Stitch ends and **GATHER** upper edge of three RUFFLE (8) sections in same manner as previous ruffle.



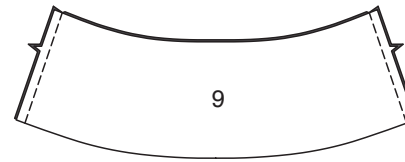
18. On **OUTSIDE**, Pin ruffle to upper edge of tier, having raw edges even, placing ruffle seams at small dots on front. Adjust gathers. Baste.



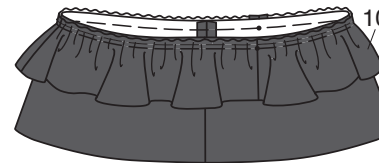
19. With right sides together. Pin tier 2 to lower edge of tier 1 matching side seams. Stitch. Press seam up.



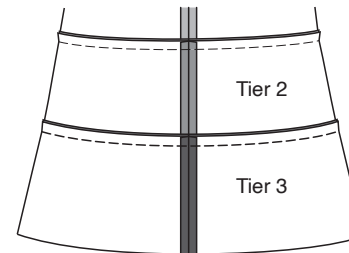
20. With right sides together, stitch side seams of TIER 3 (9) sections. Stitch ends and **GATHER** upper edge of RUFFLE (10) sections in same manner as previous ruffle.



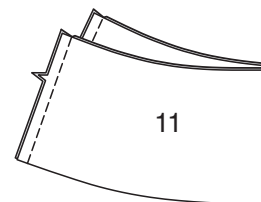
21. Baste ruffle to Tier 3 in same manner as for previous tier.



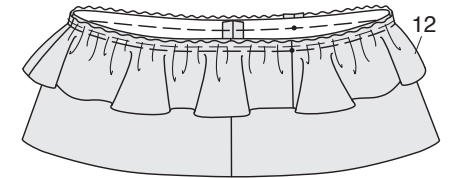
22. With right sides together. Pin tier 3 to lower edge of tier 2 matching side seams. Stitch. Press seam up.



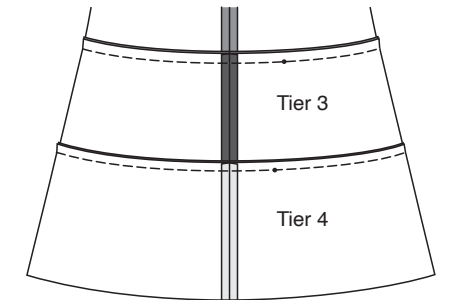
23. With right sides together, stitch side seams of TIER 4 (11) sections. Stitch ends and **GATHER** upper edge of RUFFLE (12) sections in same manner as previous ruffle.



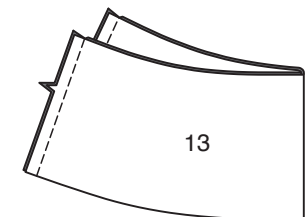
24. Baste ruffle to Tier 4 in same manner as for previous tier.



25. With right sides together. Pin tier 4 to lower edge of tier 3 matching side seams. Stitch. Press seam up.

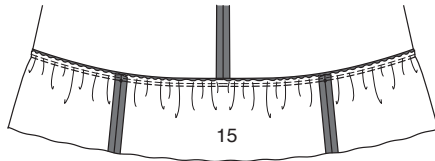


26. With right sides together, stitch side seams of TIER 5 (13) sections. Stitch ends and **GATHER** upper edge of LOWER RUFFLE (15) sections in same manner as previous ruffle.

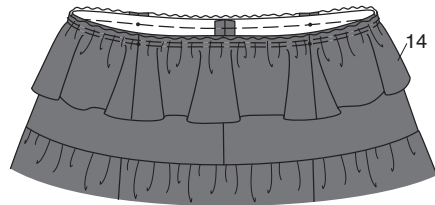


LINING

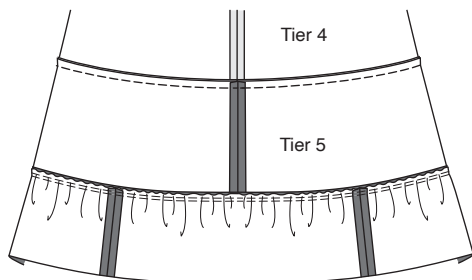
27. With right sides together, pin ruffle to lower edge of tier 5 placing seams at small dots. Adjust gathers. Baste. Stitch. Press seam up.
Stitch ends and **GATHER** upper edge of RUFFLE (14) sections in same manner as previous ruffle.



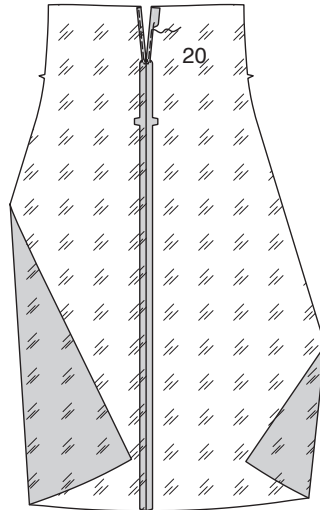
28. With right sides together, pin ruffle to upper edge of tier 5 placing seams at small dots. Adjust gathers. Baste.



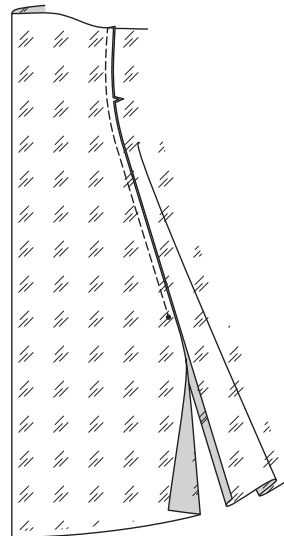
29. With right sides together. Pin tier 5 to lower edge of tier 4 matching side seams. Stitch. Press seam up.



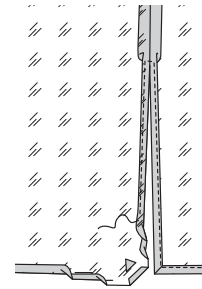
30. With right sides together, stitch center back seam of SLIP BACK (20) sections, ending at large dots. **NARROW HEM** back edges above large dot.



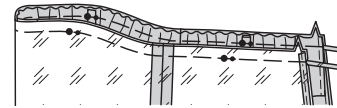
31. Stitch SLIP FRONT (19) to back at side seams, leaving open below large dots.



32. NARROW HEM slit and lower edges of slip.



33. On inside, pin right side of lining, to wrong side of dress matching side seams, small and large dots. Baste.

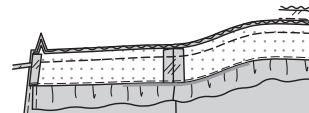


FACING

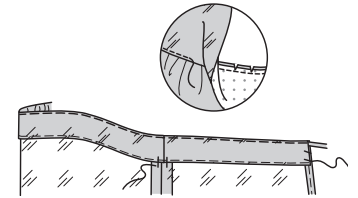
34. With right sides together, stitch FRONT FACING (21) to BACK FACING (22) at side seams. **FINISH** unnotched edge of facing. Press under 5/8" (1.5cm) on back opening edges of facing.



35. On outside, pin facing to neck edge matching markings. Stitch seam. Trim.

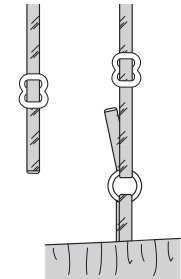


36. UNDERSTITCH FACING. Turn facing to inside. Press. Tack at seams and back opening edges.

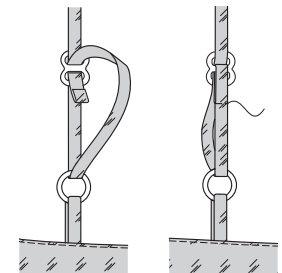


FINISHING

37. Slip each front shoulder strap over center of each slider. Slip end through ring.



38. Bring end back and slip end over center of slider again, as shown. Fold back 5/8" (1.5cm) on end, turning under raw end. Stitch close to end, closing loop around center of slider, keeping upper section of strap free, as shown.





Congrats!

You've completed your sewing adventure

**SHARE
YOUR** LOOK



Post your pattern and tag us
@simplicity_creative_group and **#knowmepatterns**
for a chance to be featured on our social media.

Look for more PDF patterns at **simplicity.com**

Have a question or need help with your sewing project call us at
1-800-782-0323

know**ME**
by **design**