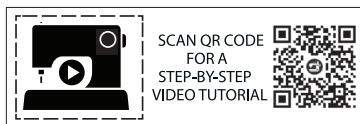


ME2044



SCAN QR CODE
 FOR A
 STEP-BY-STEP
 VIDEO TUTORIAL

@thestitchfitz



>> MISSES' DRESSES
 SKILL LEVEL: EASY

PDF
 ↓
PDF PATTERNS

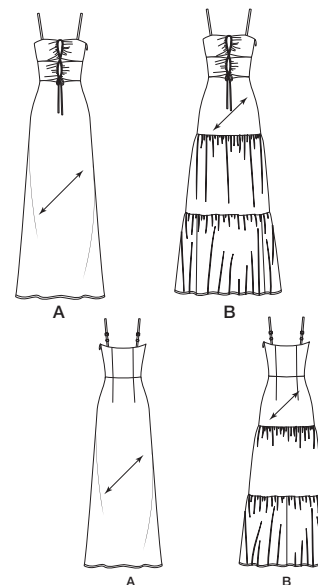
THINGS YOU NEED:

> **A,B:** One 18" (46cm) invisible zipper, pair of ½" (1.3cm) bra strap sliders and rings.

SUGGESTED FABRICS:

> Cotton Blends, Crepe de Chine, Silk and Silky Types, Voile.

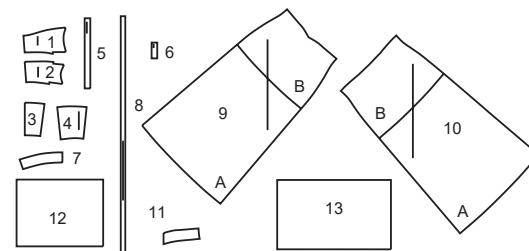
Interfacing: Lightweight Fusible.



Your printed tile pieces should be assembled before you move on to this step!

PIECES (13)

- 1 Upper Bodice Front-A,B
- 2 Lower Bodice-A,B
- 3 Bodice Back-A,B
- 4 Bodice Side Back-A,B
- 5 Front Strap-A,B
- 6 Back Strap-A,B
- 7 Bodice Back Facing-A,B
- 8 Tie-A,B
- 9 Skirt Front-A,B
- 10 Skirt Back-A,B
- 11 Skirt Front Facing-A,B
- 12 Upper Tier-B
- 13 Lower Tier-B



YARDAGE CHART

SIZES	8	10	12	14	16	18	20	22	24	26	
INTERFACING A,B											
20"	$\frac{5}{8}$	$\frac{5}{8}$	$\frac{3}{4}$	$\frac{3}{4}$	$\frac{3}{4}$	$\frac{3}{4}$	$\frac{3}{4}$	$\frac{7}{8}$	$\frac{7}{8}$	$\frac{7}{8}$	yd.
51cm	0.60	0.60	0.60	0.70	0.70	0.70	0.70	0.80	0.80	0.80	m.
DRESS A											
60"*	$2\frac{1}{8}$	$2\frac{1}{8}$	$2\frac{1}{4}$	$2\frac{1}{4}$	$2\frac{1}{4}$	$2\frac{3}{8}$	$2\frac{3}{8}$	$2\frac{1}{2}$	$2\frac{1}{2}$	$2\frac{1}{2}$	yds.
150cm*	1.90	1.90	1.90	2.10	2.10	2.20	2.20	2.30	2.30	2.30	m.
DRESS B											
60"*	$3\frac{1}{8}$	$3\frac{1}{8}$	$3\frac{1}{8}$	$3\frac{1}{8}$	$3\frac{1}{8}$	$3\frac{1}{4}$	$3\frac{1}{4}$	$3\frac{5}{8}$	$3\frac{5}{8}$	$3\frac{3}{4}$	yds.
150cm*	2.90	2.90	2.90	2.90	2.90	2.90	3.00	3.30	3.30	3.30	m.

FINISHED GARMENT MEASUREMENTS

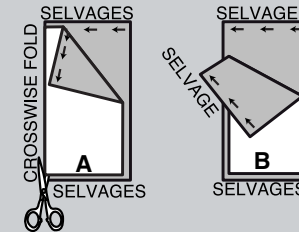
SIZES	8	10	12	14	16	18	20	22	24	26	
A,B WAIST	27½	28½	30	32	34	36	38	40	42	44	in.
	70	72	76	81	86	91	97	102	107	112	cm.
A,B HIP	36	37	38½	40½	42½	44½	46½	48½	50½	52½	in.
	91	94	98	103	108	113	118	123	128	133	cm.
WIDTH, LOWER EDGE											
DRESS A	45	46	47½	49½	51½	53½	55½	57½	59½	61½	in.
	114	117	121	126	131	136	141	146	151	156	cm.
DRESS B	53	54	55½	57½	59½	61½	63½	65½	67½	69½	in.
	135	137	141	146	151	156	161	166	171	177	cm.
FINISHED BACK LENGTH FROM BASE OF NECK											
DRESS A	53¾	54	54¼	54½	54¾	55	55¼	55½	55¾	56	in.
	137	137	138	138	139	140	140	141	142	142	cm.

BODY MEASUREMENTS

SIZES	8	10	12	14	16	18	20	22	24	26	
BUST	31½	32½	34	36	38	40	42	44	46	48	in.
	80	83	87	92	97	102	107	112	117	122	cm.
WAIST	24	25	26½	28	30	32	34	37	39	41	in.
	61	64	67	71	76	81	87	94	99	104	cm.
HIP-9" (23CM) BELOW WAIST	33½	34½	36	38	40	42	44	46	48	50	in.
	85	88	92	97	102	107	112	117	122	127	cm.
BACK-NECK TO WAIST	15¾	16	16¼	16½	16¾	17	17¼	17½	17¾	18	in.
	40	40.5	41.5	42	42.5	43	44	44.5	45	46	cm.

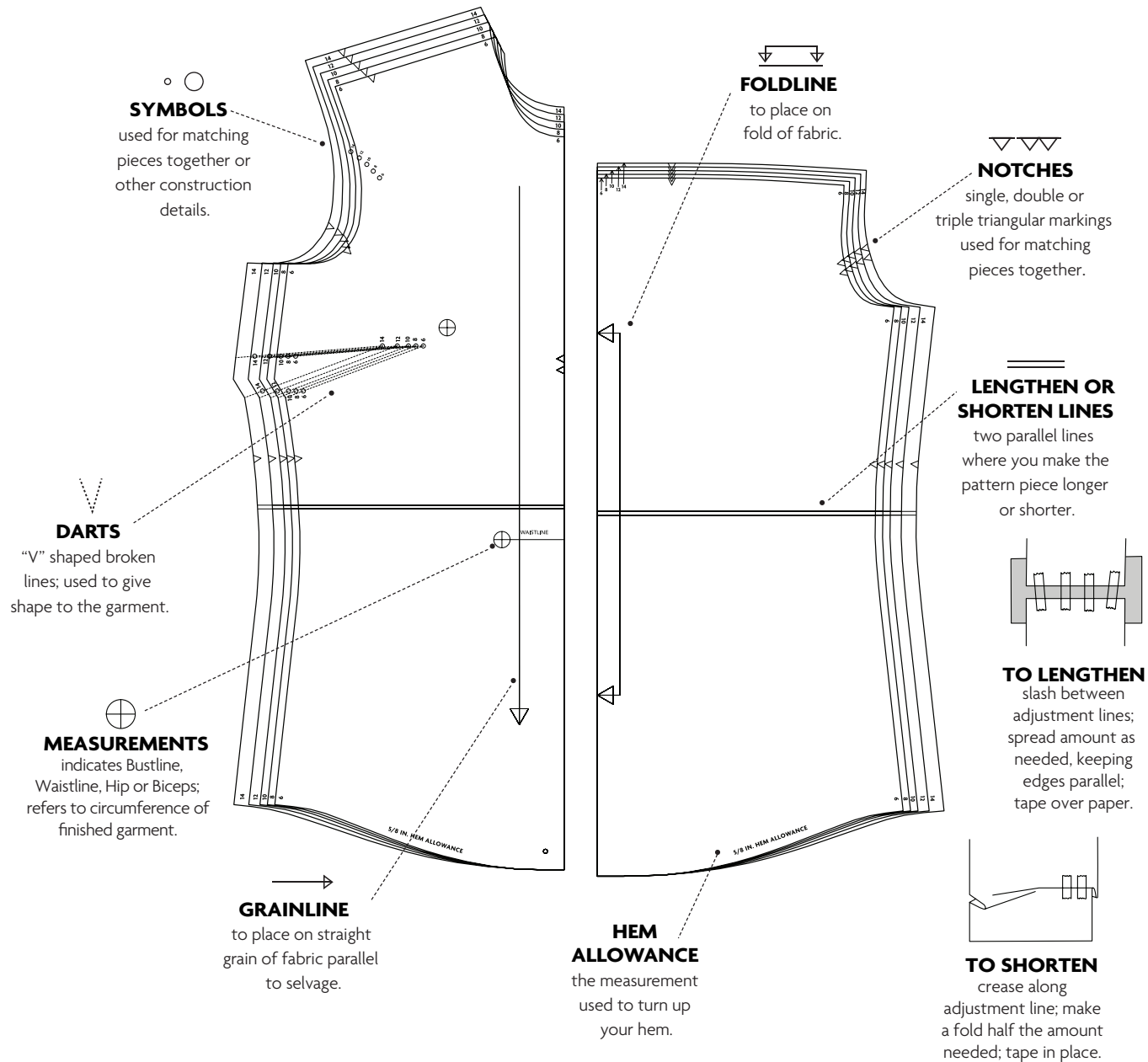
CUTTING AND MARKING

- > **SHRINK FABRIC** if not labeled pre-shrunk. Press.
- > **CIRCLE LAYOUT** for View, Size, Fabric Width.
- > Use **WITH NAP** layout for fabrics with one-way designs, nap, pile or surface shading. Because most knits have surface shading, a with nap layout is used.
- > For **DOUBLE THICKNESS (WITH FOLD)**, fold fabric with right sides together.
- > ***DOUBLE THICKNESS (WITHOUT FOLD)**, for fabrics with nap, fold fabric crosswise, right sides together. Mark as shown. Cut along crosswise fold of fabric (A). Turn upper layer 180° so arrows go in same direction and place over lower layer, right sides together (B).
- > For **SINGLE THICKNESS**, place fabric right side up. (For Fur Pile fabrics, place pile side down.)



- > Before **CUTTING**, place all pieces on fabric according to layout. Pin.
(Layouts show approximate position of pattern pieces; position may vary according to your pattern size.)
- > ★ Cut other pieces first, allowing enough fabric to cut this piece. Open fabric. Cut piece on single layer of fabric with piece face up on right side of fabric.
- > Cut accurately, cutting notches outward.
- > Before removing pattern, **TRANSFER MARKINGS** and lines of construction to **WRONG SIDE** of fabric, using Pin and Chalk Pencil method or Tracing Paper and Dressmaker Wheel. Markings needed on right side of fabric should be thread traced.
NOTE: Broken-line boxes (a! b! c!) in layouts represent pieces cut by measurements provided.
- > Prewash your fabric using a method that's suitable for the fabric type.
- > Fold fabric with right sides together, matching **SELVAGES**.
- > Pin your pattern pieces to the fabric as shown below and cut them out using a sharp pair of dressmaker's shears.

PATTERN MARKINGS

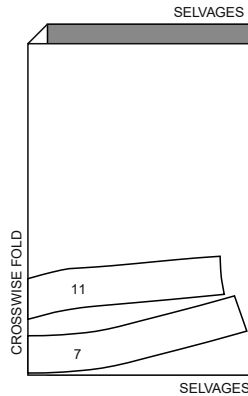


CUTTING LAYOUTS

INTERFACING A,B

use pieces: 7 11

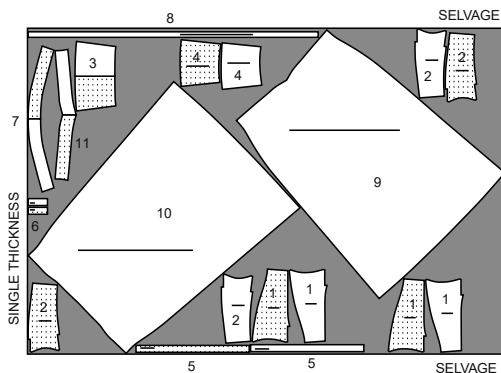
20" (51 cm)
all sizes



DRESS A

use pieces: 1 2 3 4 5 6 7 8 9 10 11

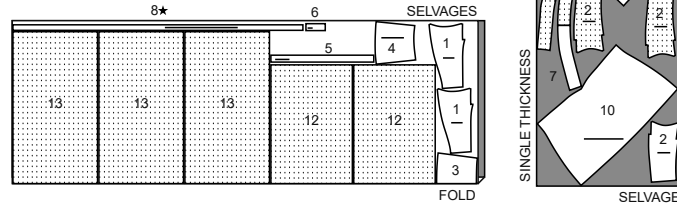
60" (150 cm)
with nap
all sizes



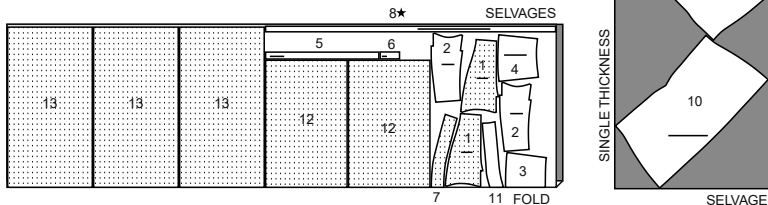
DRESS B

use pieces: 1 2 3 4 5 6 7 8 9 10 11 12 13

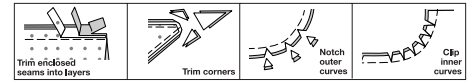
60" (150 cm)
with nap
sizes 8-10-12-14-16-18-20



60" (150 cm)
with nap
sizes 22-24-26



Press seam allowances flat; then open unless otherwise stated. Clip where necessary so they lie flat.



GLOSSARY

Sewing terms appearing in **BOLD TYPE** in Sewing Instructions are explained below.

FINISH - Stitch 1/4" (6mm) from raw edge and finish with one of the following: (1) Pink OR (2) Overcast OR (3) Turn in along stitching and stitch close to fold OR (4) Overlock.

OPTIONAL FOR HEMS: Apply Seam Binding.

GATHER - Stitch along seamline and again 1/4" (6mm) away in seam allowance, using long machine stitches. Pull thread ends when adjusting to fit.

NARROW HEM - Turn in hem; press, easing in fullness if necessary. Open out hem. Turn in again so raw edge is along crease; press. Turn in along crease; stitch.

REINFORCE - Stitch along seamline where indicated in sewing instructions, using small machine stitches.

UNDERSTITCH - Open out facing or underside of garment; stitch to seam allowance close to seam.

PATTERN PIECES WILL BE IDENTIFIED BY NUMBERS THE FIRST TIME THEY ARE USED.

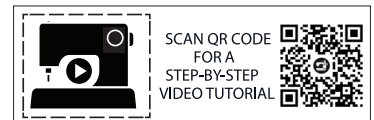
SEWING INFORMATION

5/8" (1.5cm) SEAM ALLOWANCES ARE INCLUDED, (unless otherwise indicated)

ILLUSTRATION SHADING KEY

Right Side	Wrong Side	Interfacing	Lining	Underlining

Pin or baste seams, right side together, matching notches. Fit garment before stitching major seams.



@thestitchfitz

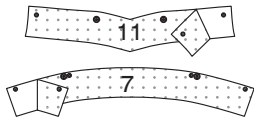
SEWING DIRECTIONS

NOTE: Under each sub-heading, the first view will be illustrated, unless otherwise illustrated.

DRESS A, B

INTERFACING

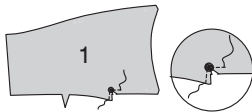
1. Fuse INTERFACING to wrong side of each matching FABRIC section, following manufacturer's instructions.



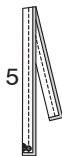
BODICE FRONT

UPPER BODICE FRONT

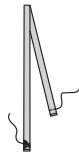
2. REINFORCE lower edge of each UPPER BODICE FRONT (1) section, pivoting at large dot, as shown. Clip diagonally to large dot.



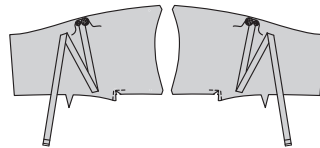
3. With right sides together, fold FRONT STRAP (5) in half lengthwise. Stitch long edges together in a 1/4" (6mm) seam, leaving ends open.



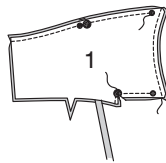
4. Turn strap right side out; press. Baste raw edges together.



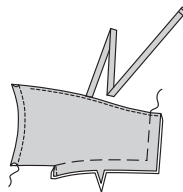
5. On outside, pin one strap to upper edge of two upper bodice front sections, matching small and large dots; baste. (Remaining upper bodice front sections will be used as facing.)



6. Pin upper bodice front FACING (1) to upper bodice front, matching notches and dots. Stitch front edge in a 1/4" (6mm) seam, forming casing. Stitch upper edge in a 1/4" (6mm) seam, from side edge to front small dot. Stitch lower edge between large and small dot in a 1/4" (6mm) seam.

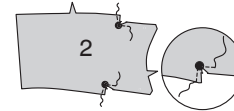


7. UNDERSTITCH facing, ending 1" (2.5cm) from front edge. Turn right side out, turning strap out; press. Baste raw edges together. Topstitch 3/8" (1cm) from front edge of upper bodice front.

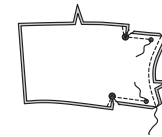


LOWER BODICE

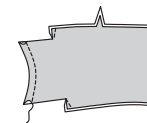
8. REINFORCE upper and lower edges of each LOWER BODICE (2) section, pivoting at large dots, as shown. Clip diagonally to large dots.



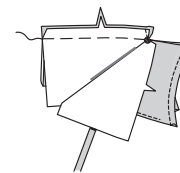
9. Pin two lower bodice sections, right sides together, matching notches and dots. Stitch front edge in a 1/4" (6mm) seam, forming casing. Stitch upper and lower edges in a 1/4" (6mm) seam between large and small dots.



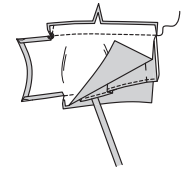
10. Turn right side out; press. (Underside layer of lower bodice will be used as facing.)



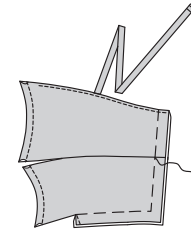
11. With right sides together and keeping lower bodice facing free, pin upper edge of lower bodice to lower edge of upper bodice front, matching notches and large dots. Baste.



12. With right sides together, pin lower bodice facing to lower bodice (over upper bodice front), matching notches and large dots. Stitch from side edge to large dot, through all layers. Trim seams.

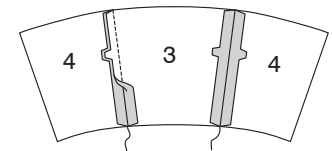


13. Turn lower bodice down. Baste raw edges together. Topstitch 3/8" (1cm) from front edge of lower bodice front.



BODICE BACK

14. With right sides together, stitch each BODICE SIDE BACK (4) to BODICE BACK (3), matching notches.



15. With right sides together, fold LOOP (6) in half lengthwise. Stitch long edges together in a 1/4" (6mm) seam, leaving ends open.



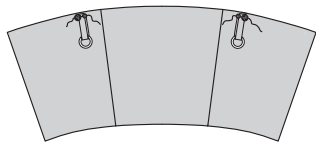
16. Turn loop right side out; press.



17. Slip one end of each loop through one ring, bringing ends together. Baste 1/4" (6mm) from raw edge.



18. On outside, pin loops to upper edge of bodice side back, matching small and large dots; baste.

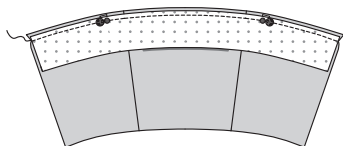


BACK FACING

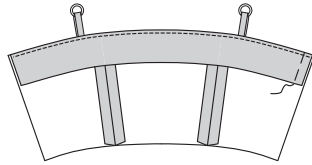
19. FINISH lower edge of BODICE BACK FACING (7).



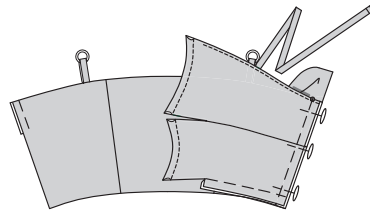
20. Pin facing to upper edge of bodice back, matching centers and dots. Stitch in a 1/4" (6mm) seam.



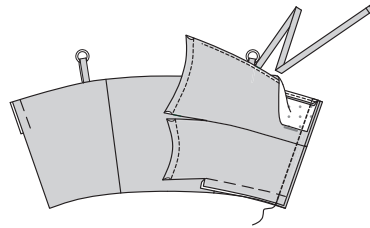
21. UNDERSTITCH facing. Turn facing to inside, turning loops out; press. Baste facing to left back.



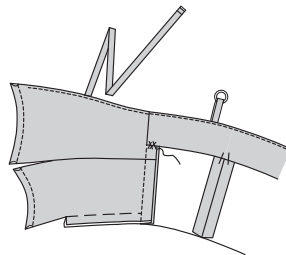
22. Open out back facing at right side seam. Pin bodice back to bodice front at right side seam, right sides together, having upper edge of front at facing seam.



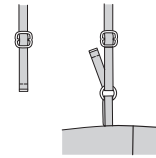
23. Turn facing to outside over front edge. Stitch right side seam.



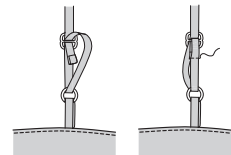
24. Turn facing to inside, turning seam toward back; press. Catch-stitch facing to seams.



25. Slip each shoulder strap through both ends of each slider section. Slip end through loop ring.

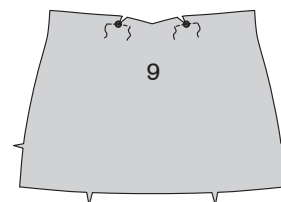
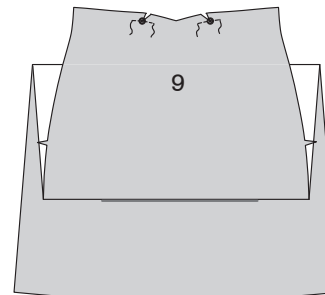


26. Bring strap back and slip end through center of slider, as shown. Fold back end, turning under 1/4" (6mm) on raw edge. Stitch close to edge, keeping upper section of strap free, as shown.

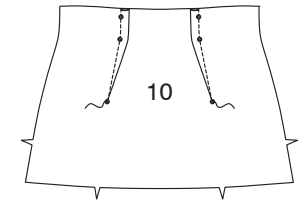
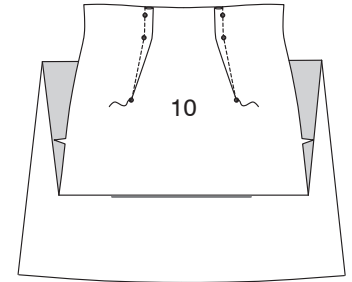


SKIRT

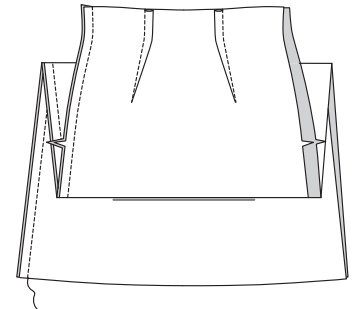
27. To REINFORCE, using fine stitches, stitch upper edge of SKIRT FRONT (9) along seam line for 1" (2.5cm) on either side of large dots. Clip seam allowance to stitching, being careful not to clip into stitching.



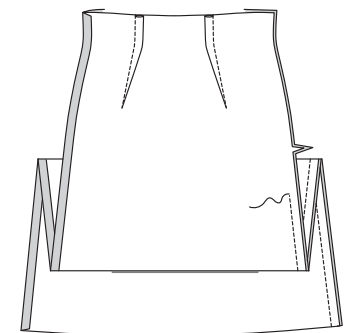
28. Stitch darts in SKIRT BACK (10). Press fold of darts toward center.



29. Stitch skirt back to skirt front at right side seam.

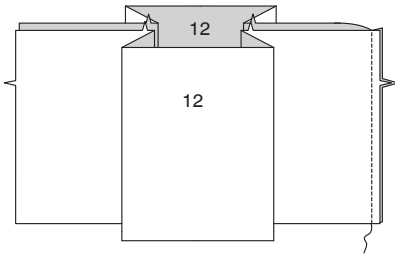


30. For View A: Stitch left side seam, from lower edge to 3" (7.5cm) below notch.

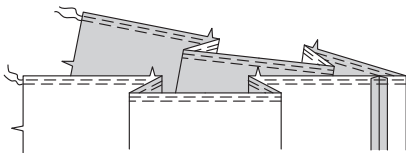


VIEW B

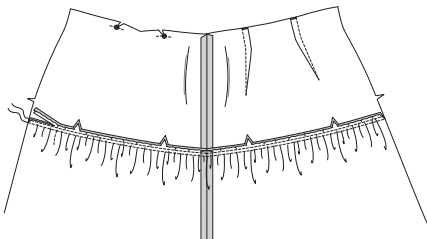
31. Stitch UPPER TIER (12) sections together at right side seam.



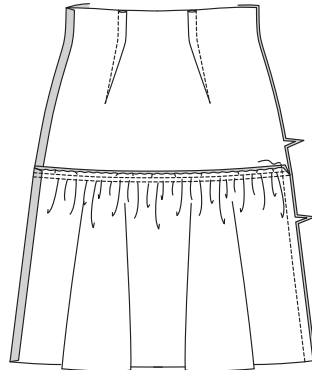
32. GATHER upper edge of upper tier.



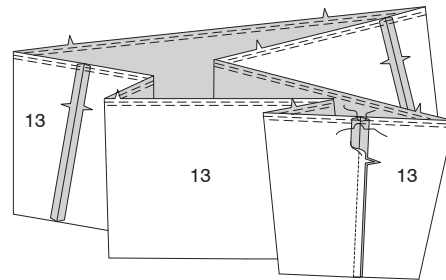
33. With right sides together, pin upper tier to skirt, matching centers and seams. Adjust gathers; baste. Stitch. Stitch again 1/4" (6mm) away in seam allowance. Trim close to second stitching. Press seam toward skirt, turning upper tier down.



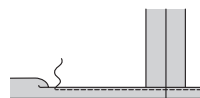
34. Stitch left side seam, from lower edge to 3" (7.5cm) below upper notch.



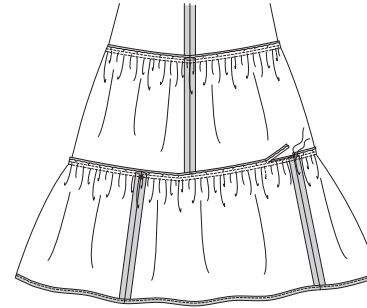
35. Stitch LOWER TIER (13) sections together at ends. **GATHER** upper edge of lower tier.



36. Press up a 5/8" (1.5cm) hem allowance on lower edge of lower tier. To form **NARROW HEM**, tuck under raw edge to meet crease; press. Stitch hem in place.

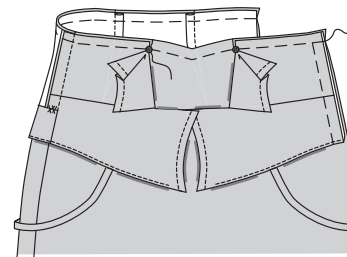


37. With right sides together, pin lower tier to upper tier, placing one seam at center back and remaining seams at small dots on front. Adjust gathers; baste. Stitch. Stitch again 1/4" (6mm) away in seam allowance. Trim close to second stitching. Press seam toward upper tier, turning lower tier down.



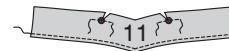
VIEWS A, B

38. Pin upper edge of skirt to lower edge of bodice, right sides together, matching centers, dots and darts to side back seams, keeping upper edge between dots free. Baste.

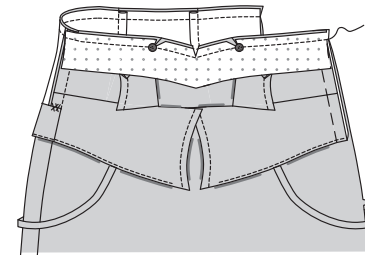


SKIRT FRONT FACING

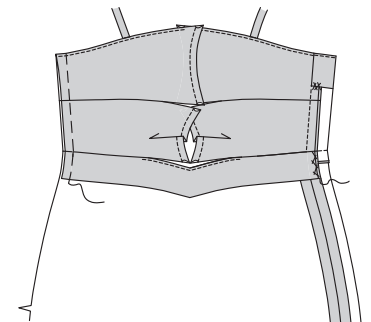
39. To reinforce, using fine stitches, stitch upper edge of SKIRT FRONT FACING (11) along stitching line for 1" (2.5cm) on either side of large dots. Clip seam allowance to stitching, being careful not to clip into stitching. **FINISH** lower edge of facing and along right end.



40. With right sides together, pin front facing to upper edge of skirt front (over bodice front), matching centers and dots. Stitch from left edges to large dots, stitching facing to upper edge of skirt front along stitching line between dots. Clip to center front; trim seams.



41. UNDERSTITCH upper front edge of facing, ending 1" (2.5cm) each side of dots. Turn seam allowances toward skirt, turning facing down; press. Baste facing to left side front. Catchstitch right end to right seam.



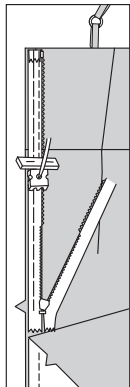
ZIPPER

42. Turn in upper end of zipper tape, as shown; baste.

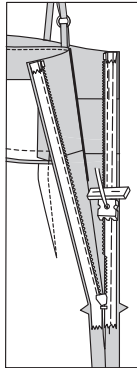
NOTE: Use special invisible zipper foot when stitching invisible zipper.



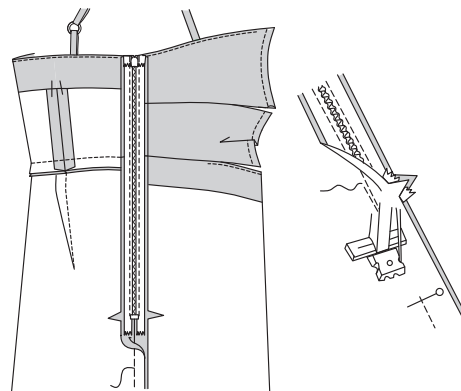
43. Open the zipper and press the tape using a cool iron. On **OUTSIDE**, pin **LEFT** side of the zipper face down on the **LEFT** side back of the zipper opening. Have the coil along the seam line, the tape within the seam allowance and the top stop $1/8$ " (3mm) below upper edge, as shown. Hand-baste along center of the tape. Position zipper foot at the top of the zipper with **RIGHT** groove of the foot over coil. Stitch along tape to the notch. Back-stitch to reinforce.



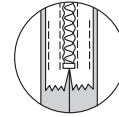
44. Pin the remaining half of the zipper to the **LEFT** side front of the zipper opening in same manner. Make sure the upper and lower edges of the dress are even. Hand-baste along the center of the tape. Position zipper foot at the top of the zipper with **LEFT** groove over the coil. Stitch along tape to the notch. Back-stitch to reinforce.



45. Close zipper and check that it is invisible from the **OUTSIDE**. Pull the free ends of the zipper tape away from the seam allowance. Pin remaining left side seam together below zipper. Position zipper foot all the way to the **LEFT** so the needle goes down through the outer notch of the foot. Start stitching seam $1/4$ " (6mm) above lowest stitch and slightly to the **LEFT**. Stitch seam for about 3" (7.5cm). Stitch remainder of seam using your regular presser foot.



46. If you prefer, open out each seam allowance at end of zipper and stitch tape to seam allowance.



FINISHING

HEM A

47. Allow dress to hang overnight. Mark length.

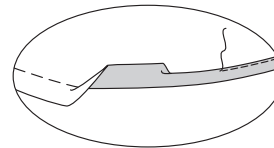
Trim depth of hem evenly allowing $5/8$ " (1.5cm) for hem.

Machine-baste $5/8$ " (1.5cm) from lower edge.

Press up hem along basting.

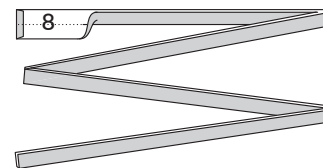
To form **NARROW HEM**, tuck under raw edge to meet basting; press.

Stitch hem in place. Remove basting.



TIE

48. Press under $1/4$ " (6mm) on ends of **TIE** (8). Fold tie in half lengthwise with **WRONG** sides together. Press, setting in a crease.



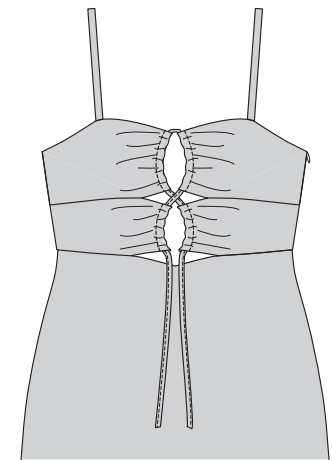
49. Open out long edges of tie and turn them to **WRONG** side so that they meet at the crease; press.



50. Fold tie in half lengthwise, bringing pressed edges together. Stitch close to pressed edges.



51. Working from lower edge, insert tie through casing on right lower bodice front, then through casing on left upper bodice front. Insert tie through casing on right upper bodice front, crossing tie under previous tie. Insert tie through casing on left lower bodice front, exiting at lower edge, having ends extending evenly. When wearing, adjust tie and tie in a bow.





Congrats!

You've completed your sewing adventure

**SHARE
YOUR** LOOK



Post your pattern and tag us
@simplicity_creative_group and **#knowmepatterns**
for a chance to be featured on our social media.

Look for more PDF patterns at **simplicity.com**

Have a question or need help with your sewing project call us at
1-800-782-0323

