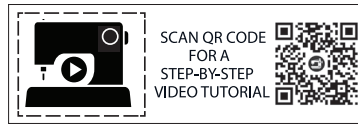


ME2043



@ericabunker

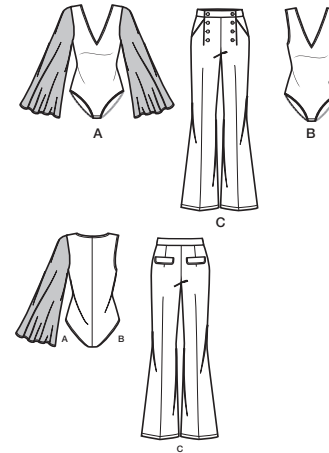


THINGS YOU NEED:

> **A,B:** 3" (8cm) length of ¾" (2cm) snap tape, 2 yds. (1.9m) of ¼" (6mm) elastic, 1¼ yds. (1.2m) of ½" (1.3cm) elastic. **C:** Eight ¾" (2cm) buttons.

SUGGESTED FABRICS:

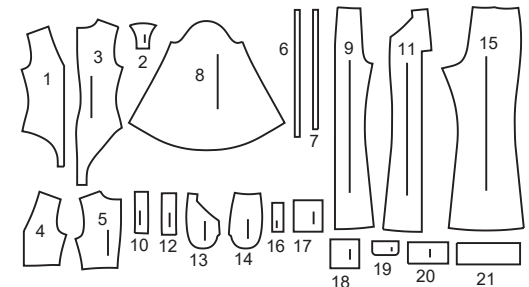
> **A,B:** Stretch Knits only such as Bamboo, ITY, Jersey, Stretch Velvet. See Stretch Gauge. **Contrast A:** Chiffon, Crepe de Chine, Double Georgette, Organza, Silky Types. **C:** Cotton Blends, Jacquards, Lightweight Wool Blends, Linen Blends, Twill. **Lining C:** Cotton Blends, Polyester Blends.



Your printed tile pieces should be assembled before you move on to this step!

PIECES (21)

- 1 FRONT-A,B
- 2 CROTCH FACING-A,B
- 3 BACK-A,B
- 4 FRONT FACING-A,B
- 5 BACK FACING-A,B
- 6 ELASTIC GUIDE FOR WAIST-A,B
- 7 ELASTIC GUIDE FOR LEG-A,B
- 8 SLEEVE-A
- 9 FRONT-C
- 10 FRONT FACING-C
- 11 SIDE FRONT-C
- 12 SIDE FRONT FACING-C
- 13 FRONT POCKET FACING-C
- 14 SIDE FRONT AND POCKET-C
- 15 BACK-C
- 16 WELT-C
- 17 BACK POCKET-C
- 18 BACK POCKET FACING-C
- 19 FLAP-C
- 20 FRONT WAISTBAND-C
- 21 WAISTBAND-C



>> MISSES' BODYSUIT AND PANTS
 SKILL LEVEL: AVERAGE



PDF PATTERNS

STRETCH GAUGE - MEASURING FABRIC STRETCH

Whenever you see a minimum stretch requirement on one of the sewing patterns, it is important that you measure the fabric stretch in both length and width!



YARDAGE CHART

SIZES	6	8	10	12	14	16	18	20	22	24	
BODYSUIT A,B											
60"*	1 $\frac{1}{8}$	1 $\frac{1}{8}$	1 $\frac{1}{4}$	1 $\frac{1}{4}$	1 $\frac{1}{4}$	1 $\frac{1}{4}$	1 $\frac{1}{4}$	1 $\frac{3}{8}$	1 $\frac{3}{8}$	1 $\frac{3}{8}$	yds.
150cm*	1.00	1.00	1.10	1.10	1.10	1.10	1.10	1.30	1.30	1.30	m.
CONTRAST A (SLEEVES)											
45"*	1 $\frac{5}{8}$	1 $\frac{5}{8}$	1 $\frac{5}{8}$	1 $\frac{5}{8}$	1 $\frac{5}{8}$	1 $\frac{5}{8}$	1 $\frac{5}{8}$	1 $\frac{5}{8}$	1 $\frac{5}{8}$	1 $\frac{5}{8}$	yds.
60"*	$\frac{7}{8}$	1	1	1 $\frac{1}{8}$	1 $\frac{1}{8}$	1 $\frac{1}{4}$	1 $\frac{3}{8}$	1 $\frac{3}{8}$	1 $\frac{3}{8}$	1 $\frac{3}{8}$	"
115cm*	1.40	1.50	1.50	1.50	1.50	1.50	1.50	1.50	1.50	1.50	m.
150cm*	0.80	0.90	0.90	1.00	1.00	1.10	1.30	1.30	1.30	1.30	"
PANTS C											
45"*	2 $\frac{7}{8}$	2 $\frac{7}{8}$	3	3	3	3	3 $\frac{1}{8}$	3 $\frac{1}{8}$	3 $\frac{1}{8}$	3 $\frac{1}{8}$	yds.
60"*	2 $\frac{1}{4}$	2 $\frac{1}{4}$	2 $\frac{1}{4}$	2 $\frac{3}{8}$	2 $\frac{1}{2}$	2 $\frac{5}{8}$	2 $\frac{5}{8}$	2 $\frac{3}{4}$	2 $\frac{7}{8}$	2 $\frac{7}{8}$	"
115cm*	2.60	2.60	2.60	2.70	2.70	2.70	2.90	2.90	2.90	2.90	m.
150cm*	2.10	2.10	2.10	2.20	2.20	2.40	2.40	2.40	2.60	2.60	"
LINING C											
45"***	$\frac{1}{2}$	$\frac{1}{2}$	$\frac{1}{2}$	$\frac{1}{2}$	$\frac{1}{2}$	$\frac{1}{2}$	$\frac{1}{2}$	$\frac{1}{2}$	$\frac{1}{2}$	$\frac{1}{2}$	yds.
115cm**	0.50	0.50	0.50	0.50	0.50	0.50	0.50	0.50	0.50	0.50	m.
INTERFACING C											
20"	$\frac{3}{4}$	$\frac{7}{8}$	$\frac{7}{8}$	$\frac{7}{8}$	$\frac{7}{8}$	1	1	1	1 $\frac{1}{8}$	1 $\frac{1}{8}$	yds.
51cm	0.70	0.80	0.80	0.80	0.80	0.90	0.90	0.90	1.00	1.00	m.

FINISHED GARMENT MEASUREMENTS

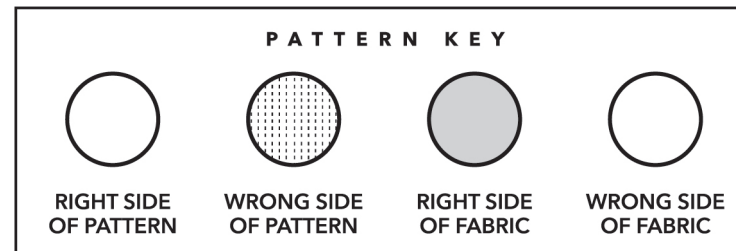
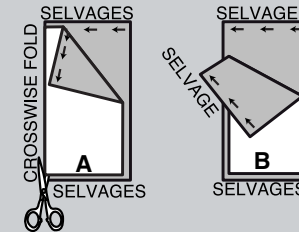
SIZES	6	8	10	12	14	16	18	20	22	24	
A,B BUST	28	29	30	31½	33½	35½	37½	39½	41½	43½	in.
	71	74	76	80	85	90	95	100	105	110	cm.
A,B WAIST	23	24	25	26½	28½	30½	32½	34½	36½	38½	in.
	58	61	64	67	72	77	83	88	93	98	cm.
C WAIST	25	26	27	28½	30½	32½	34½	36½	38½	40½	in.
	64	66	69	72	77	83	88	93	98	103	cm.
C HIP	36	37	38	39½	41½	43½	45½	47½	49½	51½	in.
	91	94	97	100	105	110	116	121	126	131	cm.
WIDTH, EACH LEG											
PANTS C	24½	25¼	26	27	28¼	29½	30¾	32	33¼	34½	in.
	62	64	66	69	72	75	78	81	84	88	cm.
FINISHED SIDE LENGTH FROM WAIST											
PANTS C	41½	41¾	42	42¼	42½	42¾	43	43¼	43½	43¾	in.
	105	106	107	107	108	109	109	110	110	111	cm.

BODY MEASUREMENTS

SIZES	6	8	10	12	14	16	18	20	22	24	
BUST	30½	31½	32½	34	36	38	40	42	44	46	in.
	78	80	83	87	92	97	102	107	112	117	cm.
WAIST	23	24	25	26½	28	30	32	34	37	39	in.
	58	61	64	67	71	76	81	87	94	99	cm.
HIP-9" (23CM) BELOW WAIST	32½	33½	34½	36	38	40	42	44	46	48	in.
	83	85	88	92	97	102	107	112	117	122	cm.
BACK-NECK TO WAIST	15½	15¾	16	16¼	16½	16¾	17	17¼	17½	17¾	in.
	39.5	40	40.5	41.5	42	42.5	43	44	44.5	45	cm.

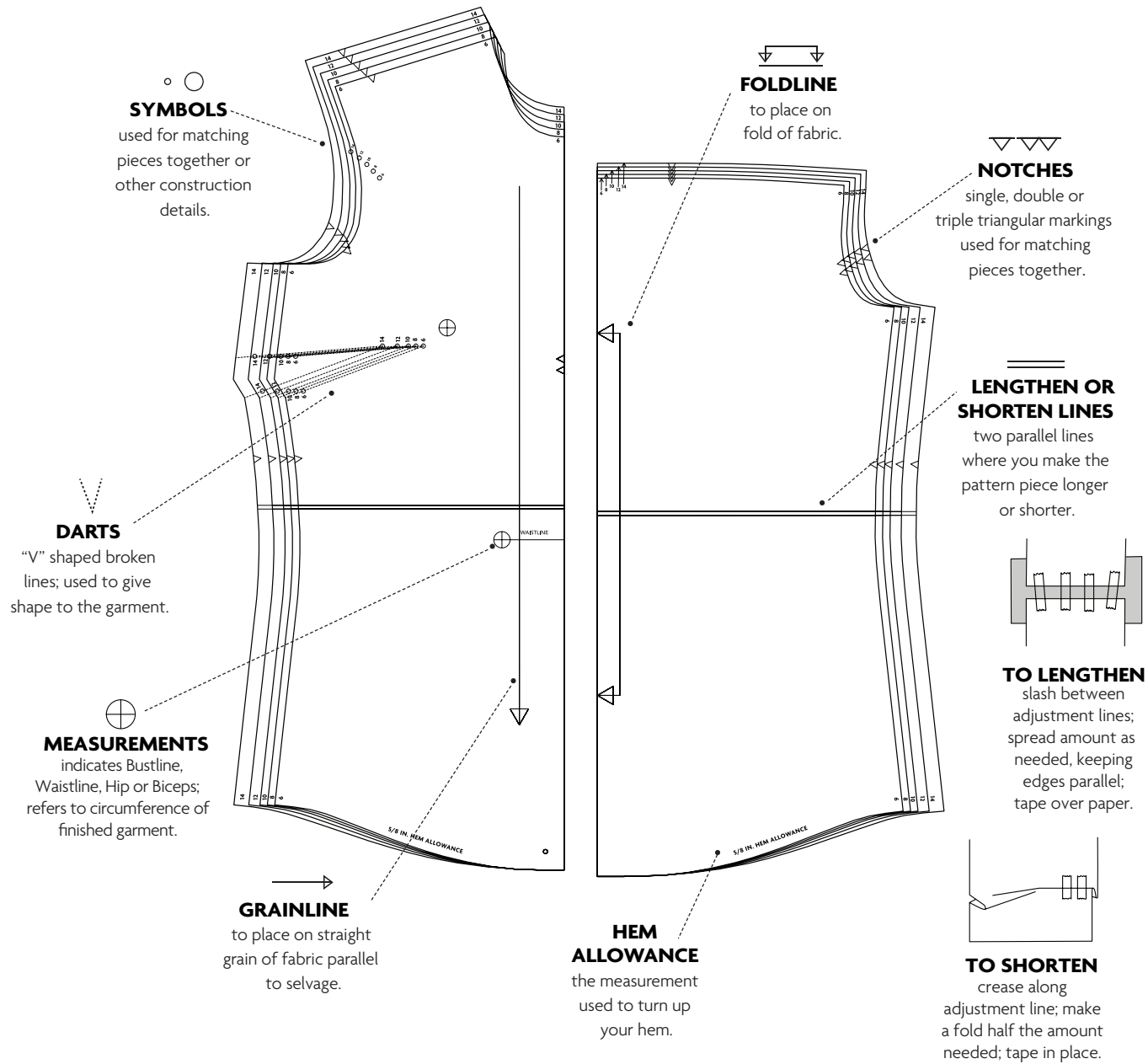
CUTTING AND MARKING

- > **SHRINK FABRIC** if not labeled pre-shrunk. Press.
- > **CIRCLE LAYOUT** for View, Size, Fabric Width.
- > Use **WITH NAP** layout for fabrics with one-way designs, nap, pile or surface shading. Because most knits have surface shading, a with nap layout is used.
- > For **DOUBLE THICKNESS (WITH FOLD)**, fold fabric with right sides together.
- > ***DOUBLE THICKNESS (WITHOUT FOLD)**, for fabrics with nap, fold fabric crosswise, right sides together. Mark as shown. Cut along crosswise fold of fabric (A). Turn upper layer 180° so arrows go in same direction and place over lower layer, right sides together (B).
- > For **SINGLE THICKNESS**, place fabric right side up. (For Fur Pile fabrics, place pile side down.)



- > Before **CUTTING**, place all pieces on fabric according to layout. Pin.
(Layouts show approximate position of pattern pieces; position may vary according to your pattern size.)
- > ★ Cut other pieces first, allowing enough fabric to cut this piece. Open fabric. Cut piece on single layer of fabric with piece face up on right side of fabric.
- > Cut accurately, cutting notches outward.
- > Before removing pattern, **TRANSFER MARKINGS** and lines of construction to **WRONG SIDE** of fabric, using Pin and Chalk Pencil method or Tracing Paper and Dressmaker Wheel. Markings needed on right side of fabric should be thread traced.
NOTE: Broken-line boxes (a! b! c!) in layouts represent pieces cut by measurements provided.
- > Prewash your fabric using a method that's suitable for the fabric type.
- > Fold fabric with right sides together, matching **SELVAGES**.
- > Pin your pattern pieces to the fabric as shown below and cut them out using a sharp pair of dressmaker's shears.

PATTERN MARKINGS

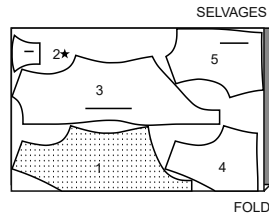


CUTTING LAYOUTS

BODYSUIT A,B

use pieces: 1 2 3 4 5

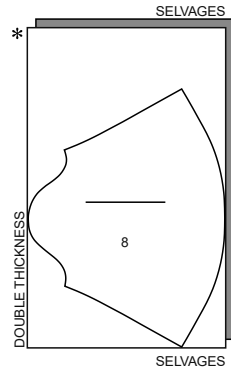
60" (150 cm)
with nap
all sizes



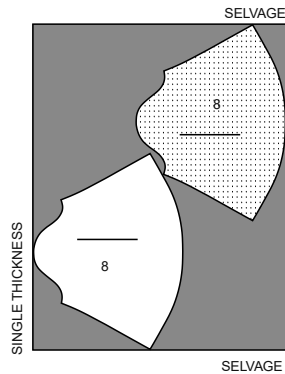
CONTRAST A (SLEEVES)

use piece: 8

45" (115 cm)
with nap
all sizes



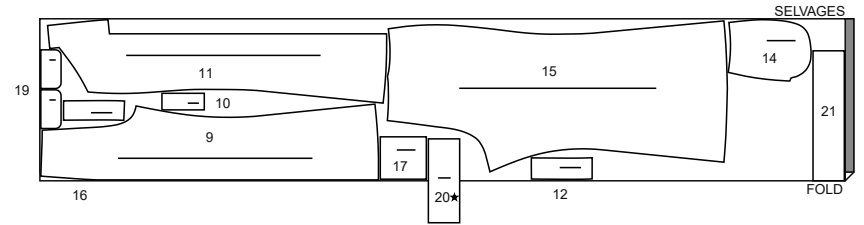
60" (150 cm)
with nap
all sizes



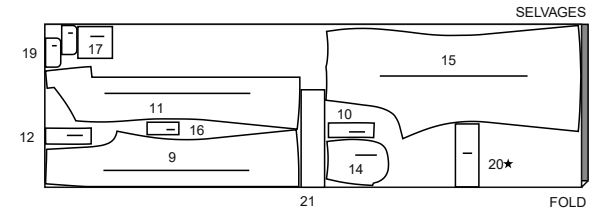
PANTS C

use pieces: 9 10 11 12 14 15 16 17 19 20 21

45" (115 cm)
with nap
all sizes



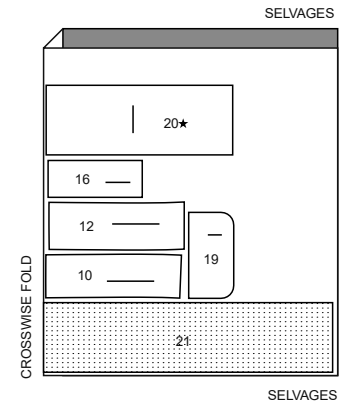
60" (150 cm)
with nap
all sizes



INTERFACING C

use pieces: 10 12 16 19 20 21

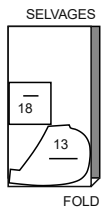
20" (51 cm)
all sizes



LINING C (POCKETS)

use pieces: 13 18

45" (115 cm)
without nap
all sizes



PATTERN PIECES WILL BE IDENTIFIED BY NUMBERS THE FIRST TIME THEY ARE USED.

SEWING INFORMATION

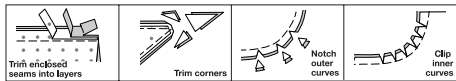
5/8" (1.5cm) SEAM ALLOWANCES ARE INCLUDED,
(unless otherwise indicated)

ILLUSTRATION SHADING KEY

Right Side	Wrong Side	Interfacing	Lining	Underlining

Pin or baste seams, right side together, matching notches. Fit garment before stitching major seams.

Press seam allowances flat; then open unless otherwise stated. Clip where necessary so they lie flat.



GLOSSARY

Sewing terms appearing in **BOLD TYPE** in Sewing Instructions are explained below.

EASESTITCH – Stitch along seamline, using long machine stitches. Pull thread ends when adjusting to fit.

NOTE: For sleeve caps, make a second row of long machine stitches 1/4" (6mm) away in seam allowance for more control.

EDGE FINISH – Stitch 1/4" (6mm) from edge, turn under edge along stitching and stitch or zig-zag, or overlock/serge raw edges.

EDGESTITCH – Stitch close to finished edge or seam.

FLAT DART – To make dart, with right sides together, bring broken lines together, matching small dots. Stitch along broken lines from wide end to point. Do not backstitch at point. Leave thread ends long and knot. Press dart as indicated in the Sewing Directions.

REINFORCE – Stitch along seamline where indicated in sewing instructions, using small machine stitches.

TOPSTITCH – On outside, stitch 1/4" (6mm) from edge, seam or previous stitching.

UNDERSTITCH – Open out facing or underside of garment; stitch to seam allowance close to seam.



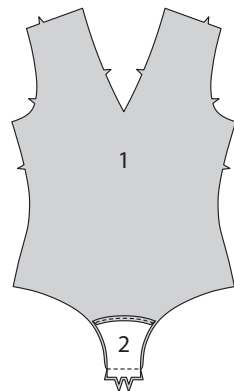
@ericabunker

SEWING DIRECTIONS

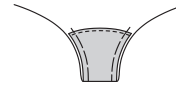
BODYSUIT A, B

NOTE: Under each sub-heading, the first View will be illustrated, unless otherwise indicated.

1. EDGE FINISH upper edge of CROTCH FACING (2). Pin crotch facing to FRONT (1) with right sides together. Stitch notched edge. Trim seam.

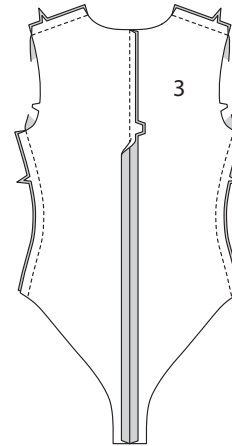


2. Turn facing to inside; press. Baste raw edges together.

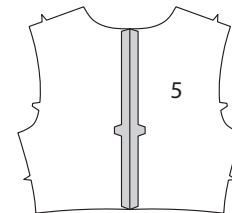


FOR VIEW A:

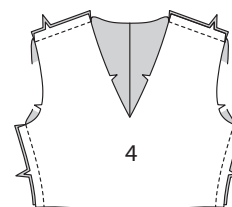
3. Stitch center back seam of BACK (3). Stitch front to back at shoulder and side edges.



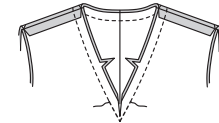
4. Stitch center back seam of BACK FACING (5).



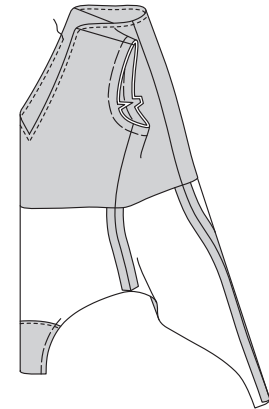
5. Pin FRONT FACING (4) to back facing at shoulder and side edges. Stitch.



6. With right sides together and raw edges even, pin facing to bodysuit at neck edge, matching seams and notches. Stitch neck edge, pivoting with needle in fabric at center. To **REINFORCE** center front, stitch again along stitching line. Trim seam; clip to center front, being careful not to clip to stitching.

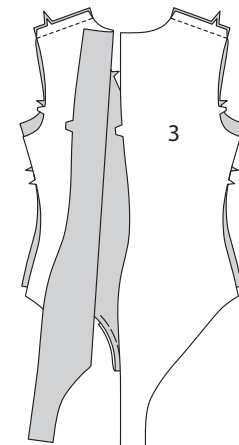


7. Turn facing to inside; press. Baste raw edges together. On outside, **TOPSTITCH** neck edge.

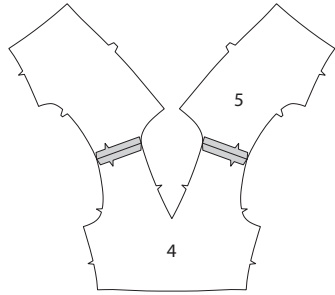


FOR VIEW B:

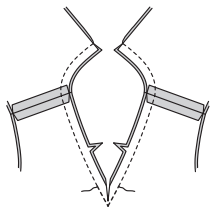
8. Stitch front to BACK (3) at shoulder edges.



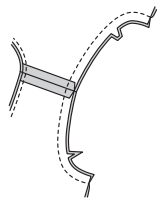
9. Pin FRONT FACING (4) to BACK FACING (5) at shoulder edges. Stitch.



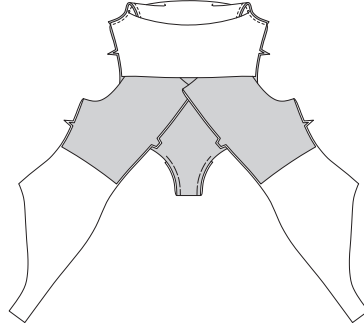
10. With right sides together and raw edges even, pin facing to bodysuit at neck edge, matching seams and notches. Stitch neck edge, pivoting with needle in fabric at center. To **REINFORCE** center front, stitch again along stitching line. Trim seam; clip to center front, being careful not to clip to stitching.



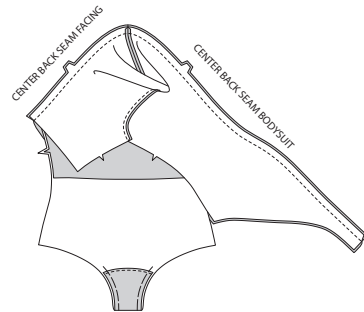
11. Pin facing to bodysuit along armhole edges, matching seams and notches. Stitch. Trim seam.



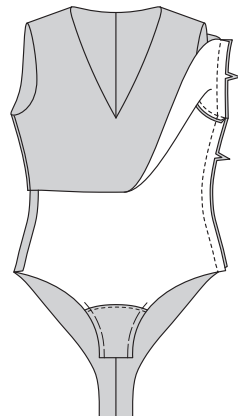
12. Turn bodysuit right side out by pulling each back facing section through shoulder and out one of the front openings; press.



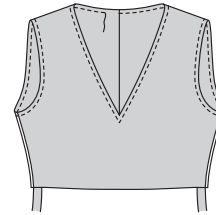
13. With right sides together and raw edges even, pin bodysuit and facing at center back edges. Stitch.



14. With right sides together and raw edges even, pin bodysuit and facing at sides, matching armhole seams or edges, and lower edges. Stitch.

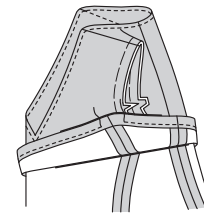


15. Turn facing to inside; press. **TOPSTITCH** neck edge and armhole edges.



CONTINUE AS FOLLOWS FOR BOTH VIEWS

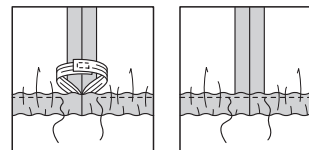
16. Turn bodysuit inside out. Pull up facing. To make casing for elastic, press under 7/8" (2.2cm). Stitch 1/4" (6mm) from raw edge, leaving an opening to insert elastic.



17. Cut a piece of 1/2" (1.3cm) elastic the length of ELASTIC GUIDE FOR WAIST (6). Transfer markings.



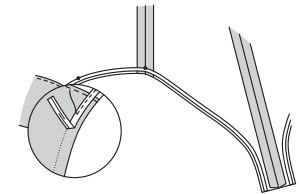
18. Insert elastic into opening in casing. Try on bodysuit. Adjust for comfort. Stitch ends. Stitch opening closed. **TIP:** To keep elastic from turning inside casing, stitch across casing at each side seam. Turn bodysuit right side out.



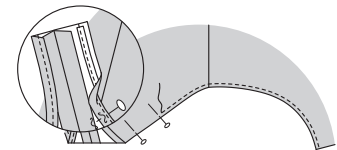
19. Cut a piece of 1/4" (6mm) elastic the length of ELASTIC GUIDE FOR LEG (7). Transfer markings.



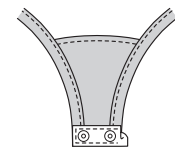
20. On inside, pin elastic to leg edge of body suit, having inner edge of elastic along 3/8" (1cm) seamline, matching small dots, and placing inner small dot at side seam. Stitch close to inner edge of elastic, stretching elastic to fit.



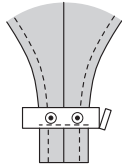
21. Turn raw edge to inside, encasing elastic; pin, placing pins on outside. On outside, **TOPSTITCH** leg edge, catching in encased elastic on the inside. Press.



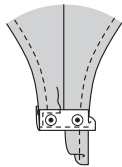
22. Cut a piece of snap tape, 3" (7.5cm) long. Separate the tape. On inside, center knob section of tape to lower edge of front. Press under ends; trim to 1/4" (6mm). **EDGESTITCH** tape in place.



23. On outside, center socket section of tape to back, having lower edge of tape along fold line. **EDGESTITCH** lower edge of tape. Trim ends to 3/8" (1cm).

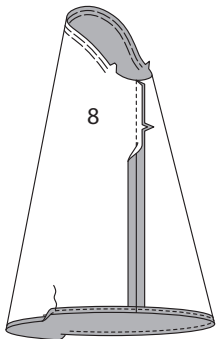


24. Turn ends of tape to inside. Turn lower edge of back under 3/8" (1cm). Turn under again along fold line; press. **EDGESTITCH** side and upper edge of tape, catching in pressed edge of back on inside. Press.

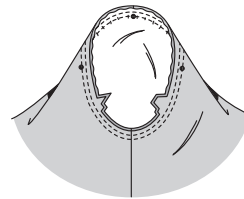


SLEEVE A

25. EASESTITCH top of SLEEVE (8) between notches. Stitch underarm seam. **NARROW HEM.**



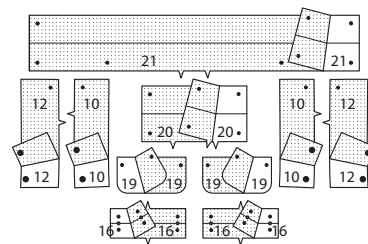
26. Turn sleeve right side out. Hold garment wrong side out with armhole toward you. With right sides together, pin sleeve to armhole edge with center small dot at shoulder seam, matching underarm seams, notches and remaining small dots. Pull up ease stitches to fit. To distribute fullness evenly, slide fabric along bobbin threads until there are no puckers or tucks on the seam line. Baste. Stitch. Stitch again 1/8" (3mm) from first stitching. Trim seam below notches close to stitching. Press only the seam allowance, shrinking out fullness.



PANTS C

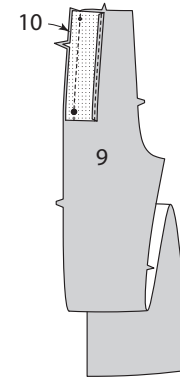
INTERFACING

1. Pin Interfacing to wrong side of FRONT FACING (10), SIDE FRONT FACING (12), WELT (16), FLAP (19), FRONT WAISTBAND (20) and WAISTBAND (21). Fuse, following manufacturer's instructions.

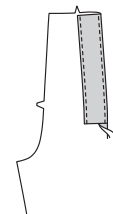


FRONT AND BACK

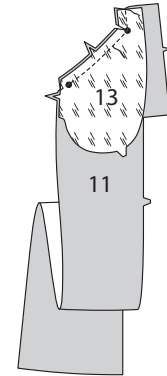
2. EDGE FINISH long unnotched edge of FRONT FACING (10). With right sides together and raw edges even, pin front facing to FRONT (9), matching small dots, large dots, and notches. Stitch.



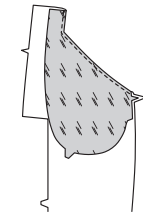
3. UNDERSTITCH the facing. Turn facing inside; press.



4. With right sides together and raw edges even, pin FRONT POCKET FACING (13) to SIDE FRONT (11), matching large dots and notches. Stitch along the stitching line. Stitch upper notched edge. Trim seam; clip to inner corner.



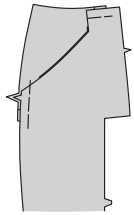
5. UNDERSTITCH front pocket facing. Turn to inside; press.



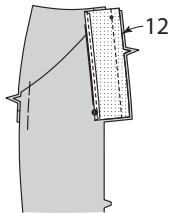
6. On inside, with right sides together, pin SIDE FRONT AND POCKET (14) to front pocket facing, having raw edges even. Stitch double notched edge, as shown.



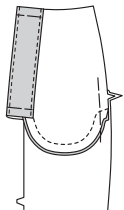
7. On outside, lap side front over side front and pocket, matching large dots, having raw edges even; pin. Baste side and upper edges together.



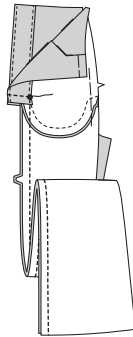
8. EDGE FINISH long unnotched edge of SIDE FRONT FACING (12). With right sides together and raw edges even, pin side front facing to side front, matching large dots and notches. Stitch long notched edge. Trim seam.



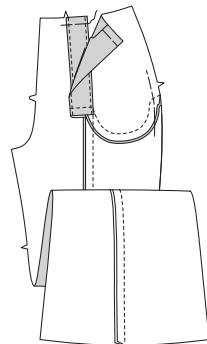
9. UNDERSTITCH the facing. Turn facing inside; press. Baste raw edges together.



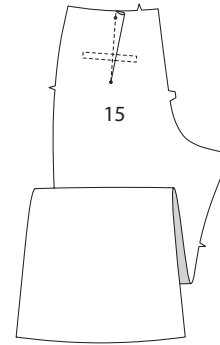
10. Open out front facing. With right sides together and raw edges even, pin front to side front at side front edge, matching large dots and notches. Stitch from lower edge to large dot, backstitching at dot to reinforce the seam. Press seam toward front. Stitch lower edge of front facing to side front facing and side front through all thicknesses.



11. Open out the front; press. On inside, baste upper edges of front facing to front.



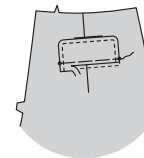
12. Make **FLAT DART** in BACK (15); press toward center. Stitch along stitching lines, pivoting with needle in fabric at corners.



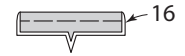
13. With right sides together, stitch facing to FLAP (19) in a 3/8" (1cm) seam, leaving edge with small dots open. Trim seam and corners; clip curves.



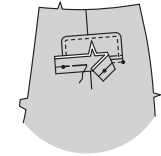
14. Turn flap; press. Baste raw edges together. **TOPSTITCH** flap. Trim seam to 1/4" (6mm). On outside, pin flap to front, placing basting along upper pocket line, matching small dots, as shown. Baste.



15. Fold WELT (16) in half lengthwise, with WRONG sides together; press. Baste long edges together.



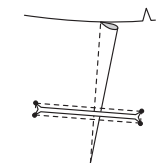
16. On outside, pin welt to back, placing basting line of welt to lower stitching line of back, matching small dots. Baste between the small dots.



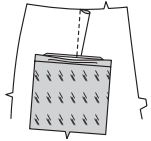
17. With right sides together, pin BACK POCKET FACING (18) to welt, matching small dots and notches. Stitch between the small dots, back-stitching to reinforce. Trim seam.



18. On inside, slash pants along slash line, clipping diagonally to small dots at corners, being careful not to catch in seam allowances of welt, flap, and pocket facing on the outside.



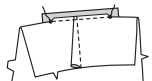
19. Turn pocket facing to inside; press, pressing up the welt, on outside.



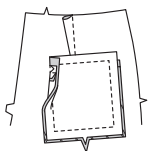
20. Fold upper edge of pants to outside, at upper small dots. On inside, pin right side of BACK POCKET (17) to pants, matching upper small dots.



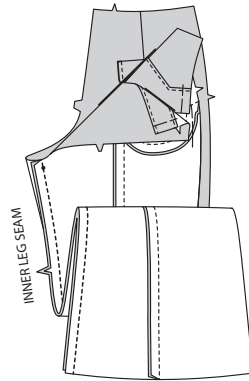
21. On inside, stitch between the small dots, being careful not to catch in upper edge of welt. Do not trim seam.



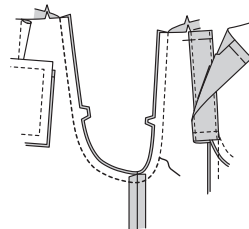
22. Pin back pocket to side and lower edges of pocket facing. Stitch along seamline, catching in clipped corners and welts, as shown.



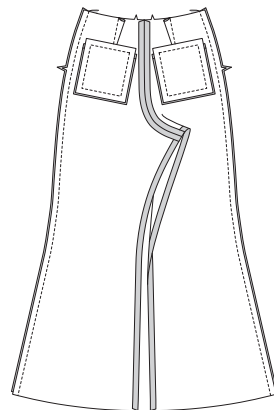
23. Stitch front to back at inner leg edges, matching small dots and notches, stretching the back to fit.



24. With right sides together, pin center edges, matching inner leg seams and notches. Stitch. To reinforce seam, stitch again over first stitching.

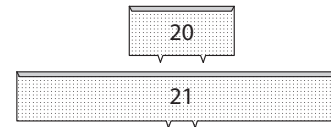


25. Stitch front to back at side edges.

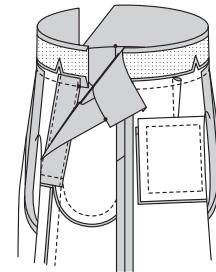


WAISTBAND

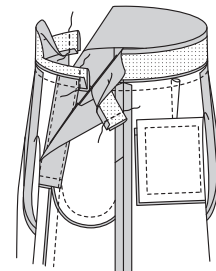
26. Press under 1/2" (1.3cm) on long unnotched edge of FRONT WAISTBAND (20) and BACK WAISTBAND (21). Trim to 1/4" (6mm).



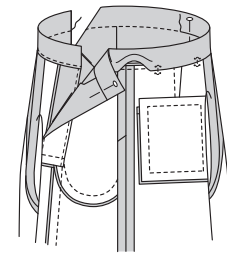
27. With right sides together, pin pants to front waistband and back waistband, matching centers, small dots, and notches, placing inner small dots of back waistband at side seams. (Bands will extend 5/8" (1.5cm) beyond finished ends of pants). Stitch. Trim seam; press seam toward band.



28. Fold bands with right sides together. Stitch ends. Trim seams and corners.

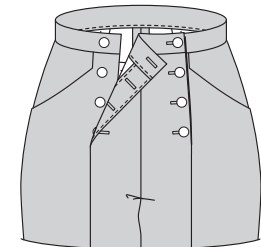


29. Turn bands; press. On inside, pin pressed edge of bands over seams, placing pins on outside. On outside, stitch in the ditch of the seam, catching in pressed edge of band facing on the inside.

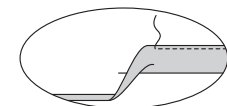


FINISHING

30. Make buttonholes in front and front waistband at markings. Lap front over side front, sew buttons to side front and waistband at small dots.



31. Press up hem allowance. Press under 1/4" (6mm) on raw edge. Stitch close to inner pressed edge.





Congrats!

You've completed your sewing adventure

**SHARE
YOUR** LOOK



Post your pattern and tag us
@simplicity_creative_group and **#knowmepatterns**
for a chance to be featured on our social media.

Look for more PDF patterns at **simplicity.com**

Have a question or need help with your sewing project call us at
1-800-782-0323

know**ME**
by **design**