



@duana\_m\_chandler



>> MISSES' DRESS, TOP  
AND SHORTS  
SKILL LEVEL: AVERAGE



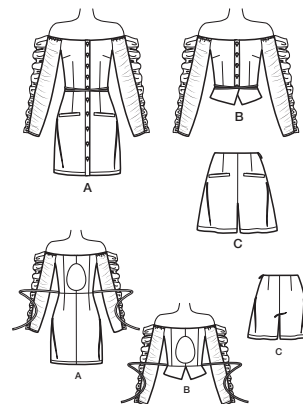
PDF PATTERNS

## THINGS YOU NEED:

- > **A,B:** 1½ yds. (1.3m) of ¾" (1cm) featherweight boning, 2½ yds. (2.0m) of ¼" (6mm) elastic, one pkg. of ¼" (6mm) double fold bias tape.
- Also for A:** Ten ¾" (2cm) buttons. **Also for B:** Five ¾" (2cm) buttons.
- C:** One 7" (18cm) invisible zipper.

## SUGGESTED FABRICS:

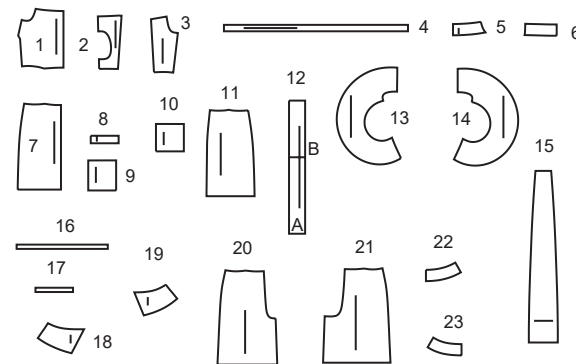
- > **A,B:** Cotton Blends, Linen Blends, Shirtings. **C:** Cotton Blends, Denim, Linen Blends, Medium weight wovens, Suiting. **Lining:** Cotton Blends, Polyester Blends, Silky Types. **Interfacing:** Lightweight Fusible.



Your printed tile pieces should be assembled before you move on to this step!

## PIECES (23)

- 1 BODICE FRONT - A,B
- 2 BODICE BACK - A,B
- 3 BODICE SIDE BACK - A,B
- 4 TIE END - A,B
- 5 FRONT FACING - A,B
- 6 BACK FACING - A,B
- 7 SKIRT FRONT - A,B
- 8 WELT - A,C
- 9 POCKET - A,C
- 10 POCKET LINING - A,C
- 11 SKIRT BACK - A
- 12 PLACKET - A,B
- 13 SLEEVE FRONT - A,B
- 14 SLEEVE BACK - A,B
- 15 SLEEVE RUFFLE - A,B
- 16 ELASTIC GUIDE FOR SLEEVE - A,B
- 17 ELASTIC GUIDE FOR ARM - A,B
- 18 FRONT PEPLUM - B
- 19 BACK PEPLUM - B
- 20 FRONT - C
- 21 BACK - C
- 22 FRONT FACING - C
- 23 BACK FACING - C



## YARDAGE CHART

SIZES	8	10	12	14	16	18	20	22	24	26	
DRESS A											
45"*	3	3½	3½	3¾	3¾	3¾	3⅝	3⅝	3¾	3¾	yds.
60"*	2⅞	2⅞	2¼	2⅝	2¾	2¾	2¾	2¾	2⅞	3	"
115cm*	2.70	2.70	2.90	3.00	3.10	3.10	3.30	3.30	3.40	3.40	m.
150cm*	1.90	1.90	2.10	2.40	2.40	2.50	2.50	2.50	2.60	2.70	"
LINING											
45"***	¾	¾	¾	¾	⅞	⅞	⅞	⅞	⅞	⅞	yds.
115cm**	0.70	0.70	0.70	0.70	0.80	0.80	0.80	0.80	0.80	0.80	m.
INTERFACING- 20"- 1⅞ yds.; 51cm- 0.90m											
TOP B											
45"*	2½	2½	2½	2⅝	2⅝	2¾	2¾	2⅞	3	3½	yds.
60"*	1¾	1⅞	1⅞	1⅞	2	2	2	2⅞	2⅝	2⅝	"
115cm*	2.30	2.30	2.30	2.40	2.40	2.50	2.50	2.50	2.70	2.90	m.
150cm*	1.60	1.70	1.70	1.70	1.80	1.80	1.80	1.90	2.20	2.20	"
CONTRAST- 45"*- 1½ yds.; 115cm*-1.40m											
LINING											
45"***	½	½	¾	¾	⅞	⅞	⅞	⅞	⅞	⅞	yds.
115cm**	0.50	0.50	0.70	0.70	0.80	0.80	0.80	0.80	0.80	0.80	m.
INTERFACING- 20"- ¾ yd.; 51cm- 0.70m											
SHORTS C											
45"*	1¾	1¾	1¾	1¾	1¾	1⅝	1⅝	1¾	1¾	1¾	yds.
60"*	1	1⅞	1⅞	1⅞	1⅞	1⅞	1¾	1½	1½	1½	"
115cm*	1.30	1.30	1.30	1.30	1.30	1.50	1.50	1.50	1.60	1.60	m.
150cm*	0.90	0.90	1.00	1.00	1.00	1.00	1.10	1.40	1.40	1.40	"
LINING- 45"***- ¾yd.; 115cm**- 0.30m											
INTERFACING- 20"- ⅞ yd.; 51cm- 0.70m											

## FINISHED GARMENT MEASUREMENTS

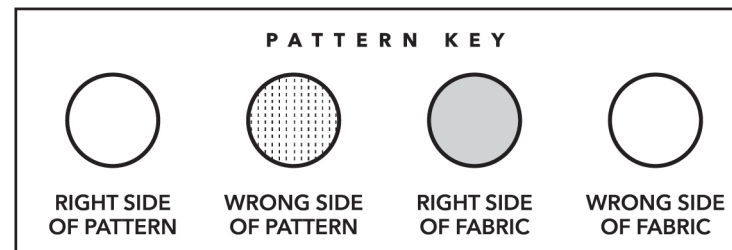
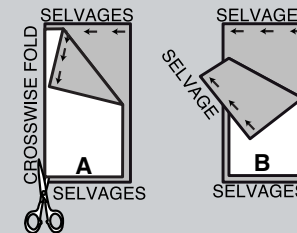
SIZES	8	10	12	14	16	18	20	22	24	26	
<b>A,B BUST</b>	35	36	37½	39½	41½	43½	45½	47½	49½	51½	in.
<b>A,B WAIST</b>	25½	26½	28	30	32	34	36	38	40	42	"
<b>C WAIST</b>	26	27	28½	30½	32½	34½	36½	38½	40½	42½	"
<b>A HIP</b>	36½	37½	39	41	43	45	47	49	51	53	"
<b>C HIP</b>	37	38	39½	41½	43½	45½	47½	49½	51½	53½	"
<b>WIDTH, LOWER EDGE</b>											
<b>DRESS A</b>	37½	38½	40	42	44	46	48	50	52	54	in.
<b>WIDTH, EACH LEG</b>											
<b>SHORTS C</b>	26	27	28	29	30	31	32	33	34	35	in.
<b>FINISHED BACK LENGTH FROM BASE OF NECK</b>											
<b>DRESS A</b>	33¾	34	34¼	34½	34¾	35	35¼	35½	35¾	36	in.
<b>FINISHED SIDE LENGTH FROM WAIST</b>											
<b>SHORTS C</b>	19¾	20	20¼	20½	20¾	21	21¼	21½	21¾	22	in.

## BODY MEASUREMENTS

SIZES	8	10	12	14	16	18	20	22	24	26	
<b>BUST</b>	31½	32½	34	36	38	40	42	44	46	48	in.
	80	83	87	92	97	102	107	112	117	122	cm.
<b>WAIST</b>	24	25	26½	28	30	32	34	37	39	41	in.
	61	64	67	71	76	81	87	94	99	104	cm.
<b>HIP-9" (23CM) BELOW WAIST</b>	33½	34½	36	38	40	42	44	46	48	50	in.
	85	88	92	97	102	107	112	117	122	127	cm.
<b>BACK-NECK TO WAIST</b>	15¾	16	16¼	16½	16¾	17	17¼	17½	17¾	18	in.
	40	40.5	41.5	42	42.5	43	44	44.5	45	46	cm.

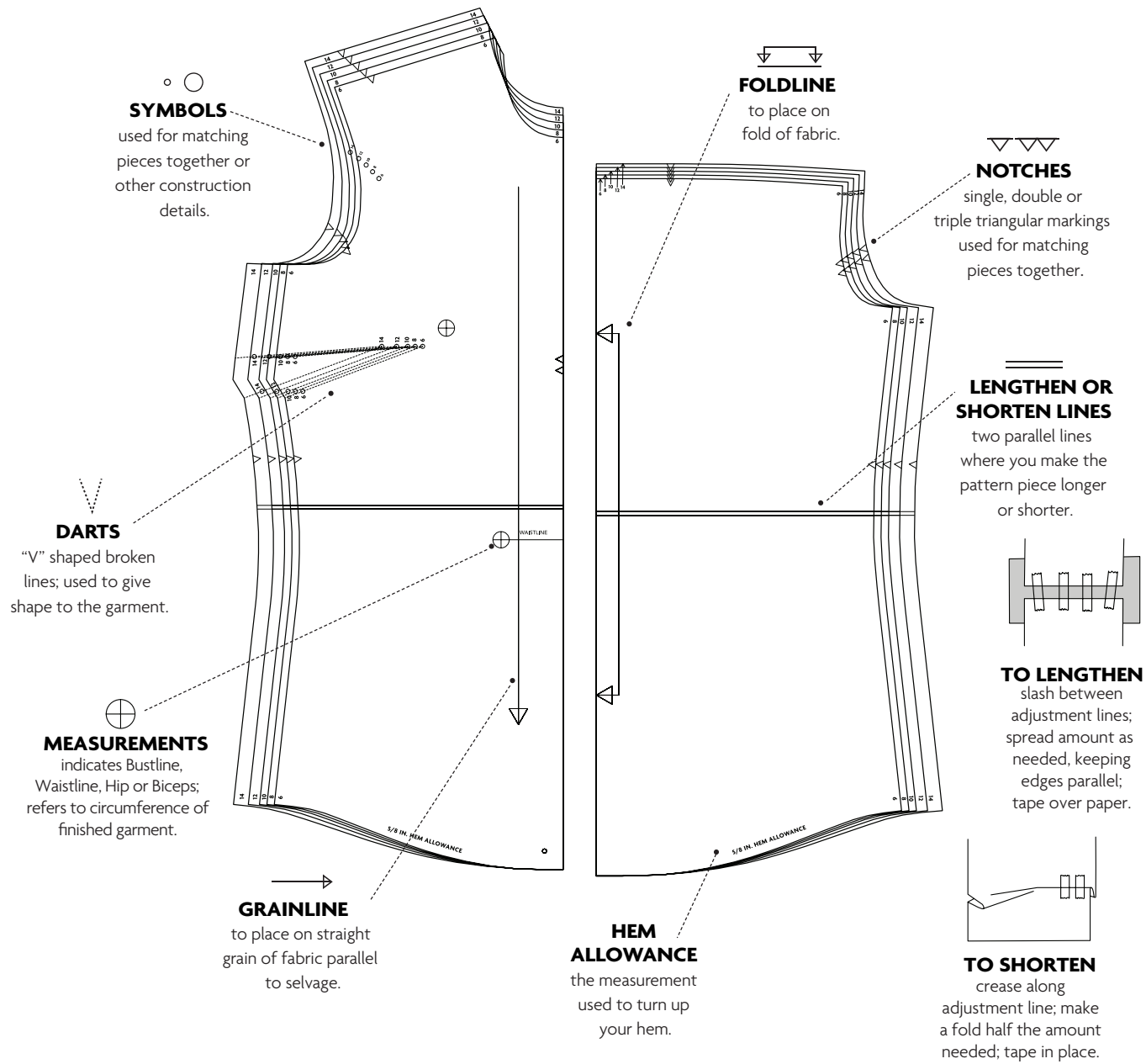
## CUTTING AND MARKING

- > **SHRINK FABRIC** if not labeled pre-shrunk. Press.
- > **CIRCLE LAYOUT** for View, Size, Fabric Width.
- > Use **WITH NAP** layout for fabrics with one-way designs, nap, pile or surface shading. Because most knits have surface shading, a with nap layout is used.
- > For **DOUBLE THICKNESS (WITH FOLD)**, fold fabric with right sides together.
- > \***DOUBLE THICKNESS (WITHOUT FOLD)**, for fabrics with nap, fold fabric crosswise, right sides together. Mark as shown. Cut along crosswise fold of fabric (A). Turn upper layer 180° so arrows go in same direction and place over lower layer, right sides together (B).
- > For **SINGLE THICKNESS**, place fabric right side up. (For Fur Pile fabrics, place pile side down.)



- > Before **CUTTING**, place all pieces on fabric according to layout. Pin.  
(Layouts show approximate position of pattern pieces; position may vary according to your pattern size.)
- > ★ Cut other pieces first, allowing enough fabric to cut this piece. Open fabric. Cut piece on single layer of fabric with piece face up on right side of fabric.
- > Cut accurately, cutting notches outward.
- > Before removing pattern, **TRANSFER MARKINGS** and lines of construction to **WRONG SIDE** of fabric, using Pin and Chalk Pencil method or Tracing Paper and Dressmaker Wheel. Markings needed on right side of fabric should be thread traced.
- NOTE:** Broken-line boxes (a! b! c!) in layouts represent pieces cut by measurements provided.
- > Prewash your fabric using a method that's suitable for the fabric type.
- > Fold fabric with right sides together, matching **SELVAGES**.
- > Pin your pattern pieces to the fabric as shown below and cut them out using a sharp pair of dressmaker's shears.

PATTERN MARKINGS

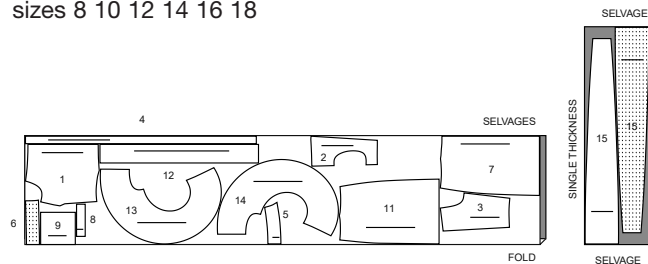


## CUTTING LAYOUTS

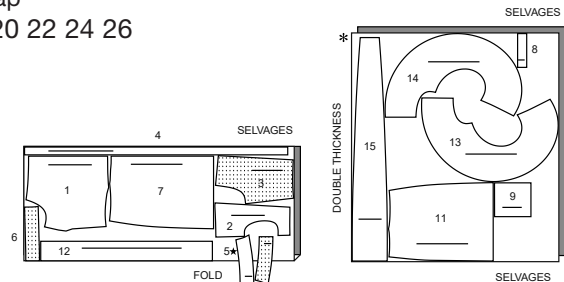
### DRESS A

use pieces: 1 2 3 4 5 6 7 8 9 11 12 13 14 15

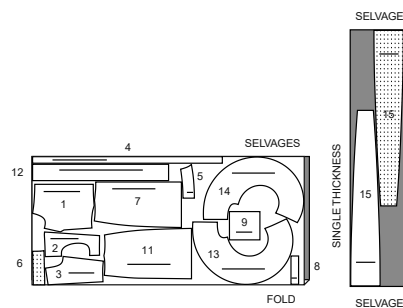
45" (115 cm)  
with nap  
sizes 8 10 12 14 16 18



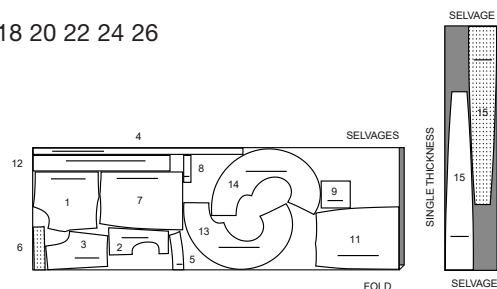
45" (115 cm)  
with nap  
sizes 20 22 24 26



60" (150cm)  
with nap  
sizes 8 10 12



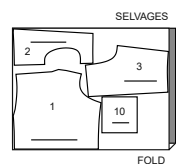
60" (150cm)  
with nap  
sizes 14 16 18 20 22 24 26



### LINING A

use pieces: 1 2 3 10

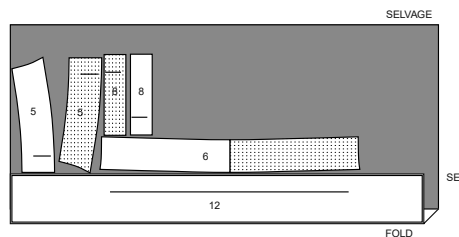
45" (115 cm)  
without nap  
all sizes



### INTERFACING A

use pieces: 5 6 8 12

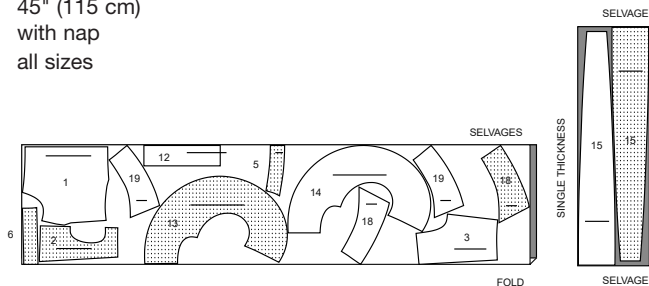
20" (51 cm)  
all sizes



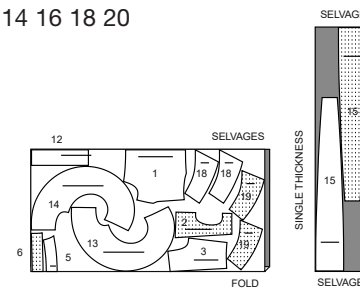
### TOP B

use pieces: 1 2 3 5 6 12 13 14 15 18 19

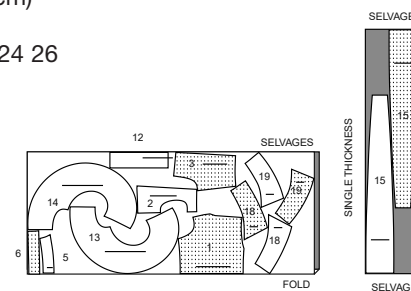
45" (115 cm)  
with nap  
all sizes



60" (150cm)  
with nap  
sizes 8 10 12 14 16 18 20



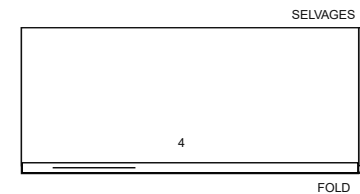
60" (150cm)  
with nap  
sizes 22 24 26



### CONTRAST (TIE) B

use piece: 4

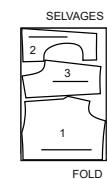
45" (115 cm)  
with nap  
all sizes



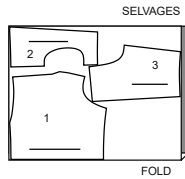
### LINING B

use pieces: 1 2 3

45" (115 cm)  
with nap  
sizes 8 10



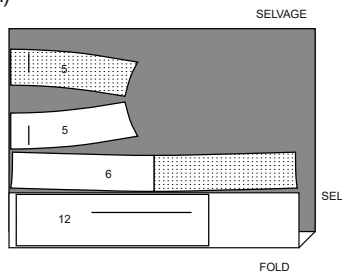
45" (115 cm)  
with nap  
sizes 12 14 16 18 20 22 24 26



## INTERFACING B

use pieces: 5 6 12

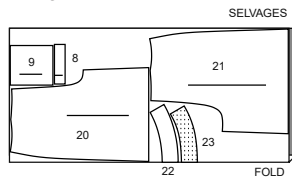
20" (51 cm)  
all sizes



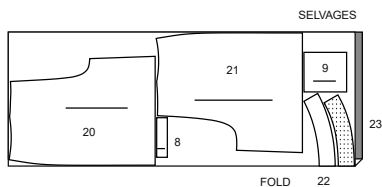
## SHORTS C

use pieces: 8 9 20 21 22 23

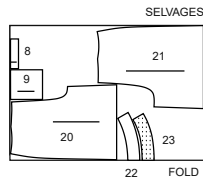
45" (115 cm)  
with nap  
sizes 8 10 12 14 16



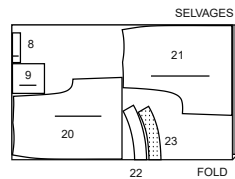
45" (115 cm)  
with nap  
sizes 18 20 22 24 26



60" (150cm)  
with nap  
sizes 8 10 12 14 16 18 20



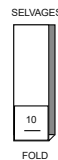
60" (150cm)  
with nap  
sizes 22 24 26



## LINING C

use piece: 10

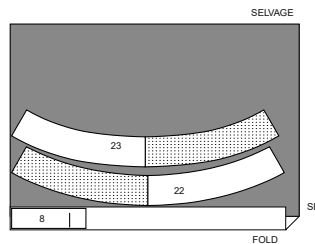
45" (115 cm)  
without nap  
all sizes



## INTERFACING C

use pieces: 8 22 23

20" (51 cm)  
all sizes



PATTERN PIECES WILL BE IDENTIFIED  
BY NUMBERS THE FIRST TIME THEY  
ARE USED.

## SEWING INFORMATION

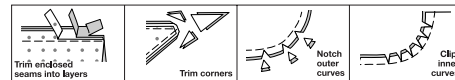
**5/8" (1.5cm) SEAM ALLOWANCES  
ARE INCLUDED,**  
(unless otherwise indicated)

### ILLUSTRATION SHADING KEY

Right Side	Wrong Side	Interfacing	Lining	Underlining

Pin or baste seams, right side together,  
matching notches. Fit garment before  
stitching major seams.

Press seam allowances flat; then open  
unless otherwise stated. Clip where  
necessary so they lie flat.



## GLOSSARY

Sewing terms appearing in **BOLD  
TYPE** in Sewing Instructions are  
explained below.

**DART** - To make dart, with **RIGHT** sides  
together, fold the fabric through the  
center of the dart, bringing broken lines  
and small dots together. On **INSIDE**,  
place pins at **RIGHT** angles to the  
broken lines. Stitch the dart from wide  
end to point.

**NARROW HEM** - Turn in hem; press,  
easing in fullness if necessary. Open out  
hem. Turn in again so raw edge is along  
crease; press; turn in along crease;  
stitch.

**REINFORCE** - Stitch along seamline  
where indicated in sewing instructions,  
using small machine stitches.

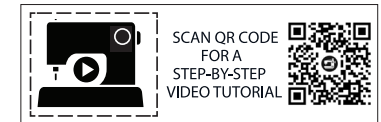
**STAYSTITCH** - Stitch 1/8" (3mm) from  
seamline in seam allowance (usually  
1/2" (13mm) from raw edge).

**UNDERSTITCH** - Open out facing or  
underside of garment; stitch to seam  
allowance close to seam.

**FINISH** - Stitch 1/4" (6mm) from  
raw edge and finish with one of the  
following: (1) Pink OR (2) Overcast OR  
(3) Turn in along stitching and stitch  
close to fold OR (4) Overlock.

OPTIONAL FOR HEMS: Apply Seam  
Binding.

**SLIPSTITCH** - Slide needle through a  
folded edge, then pick up a thread of  
underneath fabric.



@duana\_m\_chandler

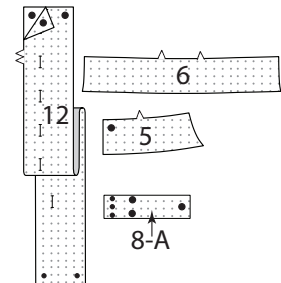
## SEWING DIRECTIONS

### DRESS A, TOP B

**NOTE:** Under each sub-heading, the first  
View will be illustrated, unless otherwise  
indicated.

### INTERFACING

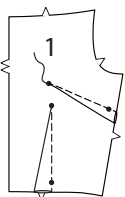
**1.** Pin **INTERFACING** to wrong side of  
each matching **FABRIC** section. Fuse,  
following manufacturer's instructions.



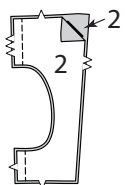


## FRONT AND BACK

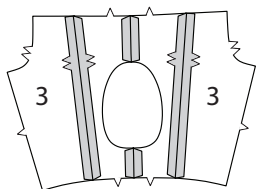
**2.** Stitch **DARTS** in BODICE FRONT (1). Press bust dart down and remaining dart toward center.



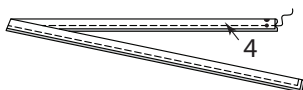
**3.** Stitch BODICE BACK (2) sections together at center back, as shown.



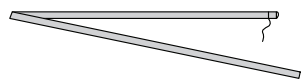
**4.** Stitch BODICE SIDE BACK (3) sections to side edges of bodice back.



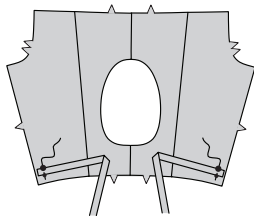
**5.** With right sides together, fold TIE END (4) in half lengthwise. Stitch in a 1/4" (6mm) seam, leaving end with symbols open.



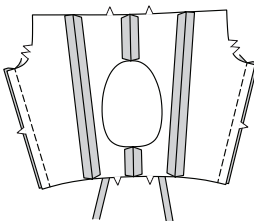
**6.** Turn. Press. Baste raw edges.



**7.** On outside, pin tie ends to side edges of back, matching symbols, having raw edges even. Baste.



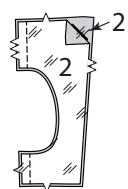
**8.** Stitch front sections to back at sides, being careful not to catch free edges of tie ends in stitching.



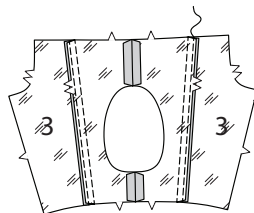
**9.** Stitch **DARTS** in bodice front LINING (1). Press bust dart down and remaining dart toward center.



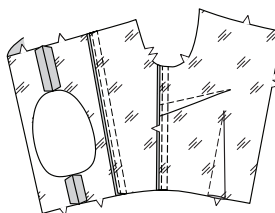
**10.** Stitch bodice back LINING (2) sections together at center back, as shown.



**11.** Stitch bodice side back LINING (3) sections to side edges of bodice back lining. Press seam allowances toward sides. To form casings for boning, stitch seam allowances in place, 1/4" (6mm) from raw edge, as shown.



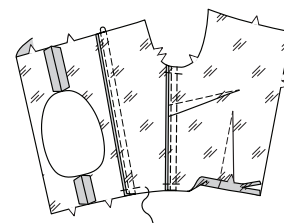
**12.** Stitch front lining sections to back lining at sides. Press seam allowances toward back. To form casings for boning, stitch seam allowances in place, 1/4" (6mm) from raw edge, as shown.



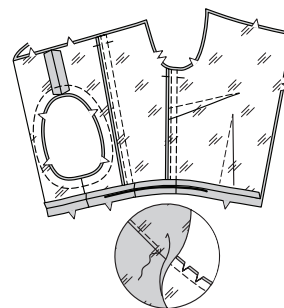
**13.** Cut boning the length of each side and side back seam between upper and lower seamlines. Trim away 1/8" (3mm) of boning on ends, rounding edges, as shown.



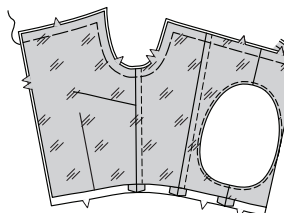
**14.** Insert boning into matching casings. Stitch across upper and lower edges of each casing along seamlines. Turn in seam allowance on lower edge of lining. Press. Trim pressed seam allowance to 3/8" (1cm).



**15.** With right sides together, pin lining to bodice, matching centers. Stitch back opening. Trim. **UNDERSTITCH** lining.

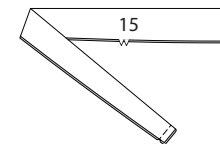


**16.** Turn lining to inside. Press. Baste upper and armhole edges.

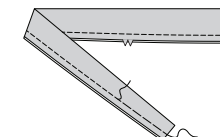


## SLEEVE AND FACING

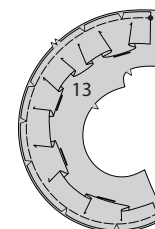
**17.** With right sides together, fold SLEEVE RUFFLE (15) along foldline. Stitch ends. Trim.



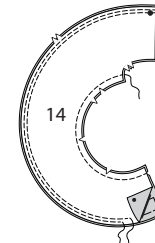
**18.** Turn. Press. Baste and **STAYSTITCH** raw edges.



**19.** On outside, pin sleeve ruffle to outer curved edge of SLEEVE FRONT (13), matching symbols and notches, clipping ruffle where necessary. Baste.

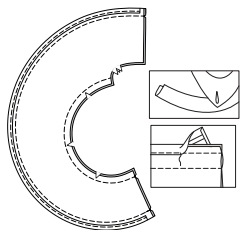


**20.** With right sides together, pin SLEEVE BACK (14) to sleeve front, over ruffle, matching symbols and notches. Stitch inner and outer curved edges, as shown. To form casing for elastic, stitch outer curved edge again 1/4" (6mm) from raw edge, as shown.

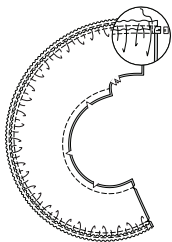




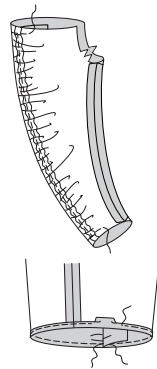
**21.** Preshape double fold bias tape to match outer curve, using a steam iron. Pin bias tape to outer sleeve seam allowances, having ends 1" (2.5cm) below upper edge and 1" (2.5cm) above lower edge, turning in 1/4" (6mm) on ends, as shown, placing narrow edge along outer stitching and wider edge underneath. Stitch bias tape close to narrow folded edge, through all thicknesses, uncasing raw edge.



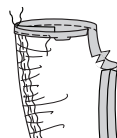
**22.** Cut elastic the length of ELASTIC GUIDE FOR SLEEVE (16). Insert elastic through casing, having ends even with raw edges. Stitch across both ends of casing slightly below upper seamline and slightly above lower seamline, as shown, catching elastic in stitching. Trim ends of elastic close to stitching.



**23.** Press casing toward back. Baste upper and lower edges. Make **NARROW HEM** at lower edge of sleeve, breaking stitching at ruffle.



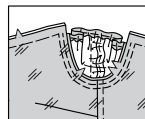
**24.** To form casings for elastic, turn in seam allowance on upper edge of sleeve, turning in 1/4" (6mm) on raw edge. Stitch, breaking stitching at ruffle.



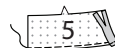
**25.** Cut elastic the measurement of ELASTIC GUIDE FOR ARM (17). Insert elastic through front casing opening, extending ends even with raw edges. Baste ends.



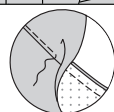
**26.** With right sides together, pin sleeve to armhole edge, matching seams. Stitch. Stitch again 1/4" (6mm) away in seam allowance. Trim close to stitching. Press seam allowances flat. Turn seam toward bodice.



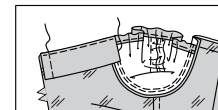
**27.** **FINISH** lower unnotched edge of FRONT FACING (5). Turn in seam allowance on armhole edge of facing. Press. Trim pressed seam allowance to 3/8" (1cm).



**28.** With right sides together, pin front facing to upper edge of bodice, matching large dots. Stitch. Trim. **UNDERSTITCH** facing.



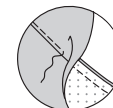
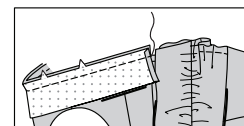
**29.** Turn facing to inside. **SLIPSTITCH** pressed edge over armhole seam. Baste front edge.



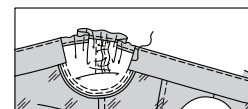
**30.** **FINISH** lower unnotched edge of BACK FACING (6). Turn in seam allowances on armhole edges of facing. Press. Trim pressed seam allowances to 3/8" (1cm).



**31.** With right sides together, pin back facing to upper edge of bodice back, matching centers. Stitch. Trim. **UNDERSTITCH** facing.



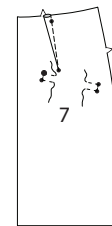
**32.** Turn facing to inside. **SLIPSTITCH** pressed edges over armhole seams.



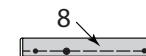
## FINISHING

**View A:**

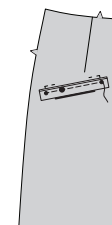
**33.** Stitch **DART** in SKIRT FRONT (7). Press dart toward center. **REINFORCE** inner corner of skirt front along stitching lines, pivoting at small and large dots.



**34.** With wrong sides together, fold **WELT** (8) along foldline. Baste raw edges together.



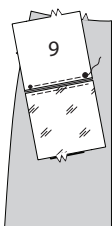
**35.** Pin welt to skirt front, placing seamline along lower stitching line, matching symbols, as shown. Baste.



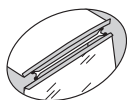
**36.** With right sides together, pin **POCKET LINING** (10) to skirt front, over welt, matching symbols. Stitch along stitching line between small dots.



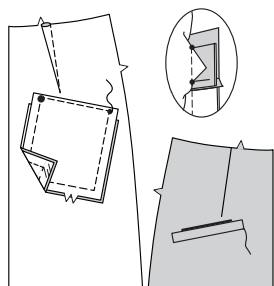
**37.** With right sides together, pin **POCKET** (9) to skirt, placing seamline along upper stitching line. Baste. Stitch between small dots.



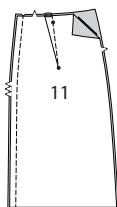
**38.** Slash along line between stitching, clipping diagonally to small circles.



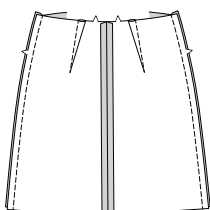
**39.** Turn pocket and triangular ends to inside, pulling ends of welt between small dots, as shown, turning welt up. Press. Stitch pocket edges together, catching welts and triangular ends in stitching, keeping skirt free.



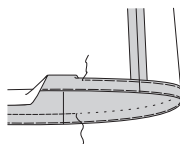
**40.** Stitch **DART** in **SKIRT BACK** (11). Press dart toward center. Stitch skirt back sections together at center back.



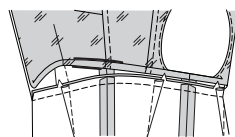
**41.** Stitch skirt front sections to skirt back at sides.



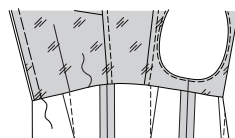
**42.** Turn up skirt hem. Baste close to fold. Turn in 1/4" (6mm) on raw edge. Baste hem in place close to upper edge. Press. **TOPSTITCH** hem along upper basting.



**43.** Open out bodice lining. Pin skirt to bodice, matching centers and seams. Stitch. Trim. Press seam toward bodice.



**44.** Turn down lining. **SLIPSTITCH** pressed edge over seam. Baste front edges.



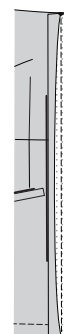
**45.** Turn in seam allowance on long unnotched edge of **PLACKET** (12). Press. Trim pressed seam allowance to 3/8" (1cm).



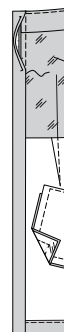
**46.** With right sides together, fold placket along foldline. Stitch across upper and lower edges. Trim. Turn. Press.



**47.** Pin placket to front opening edges, having raw edges even. Stitch, keeping pressed edge free. Trim.



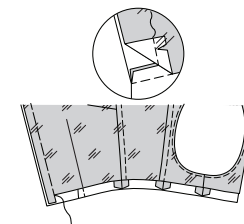
**48.** Press seam toward placket. **SLIPSTITCH** pressed edge of placket over seam.



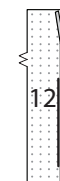
#### View B:

**49.** Open out lower pressed edge of lining.

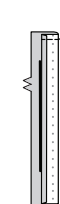
**REINFORCE** lower edges of front lining along seamline 5/8" (1.5cm) from front edges, as shown. Clip to stitching at seam allowance. Turn in lower seam allowance between clips. Press. Baste raw edges.



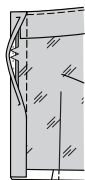
**50.** Turn in seam allowance on long unnotched edge of placket. Press. Trim pressed seam allowance to 3/8" (1cm).



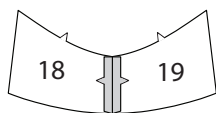
**51.** With right sides together, fold placket along foldline. Stitch across upper edge. Trim. Turn. Press.



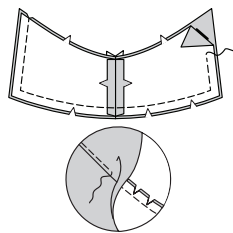
**52.** Pin placket to front opening edges, having raw edges even. Stitch. Trim. Press seam toward placket.



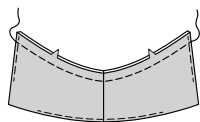
**53.** For each side, stitch one **FRONT PEPLUM** (18) section to one **BACK PEPLUM** (19) section at side edge.



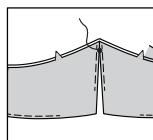
**54.** For lining, for each side, stitch one remaining front peplum section to one remaining back peplum section at side edge. With right sides together, pin lining section to peplum section, matching seams. Stitch front, lower and back edges. Trim. **UNDERSTITCH** lining as far as possible.



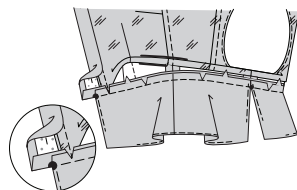
**55.** Turn. Press. **STAYSTITCH** upper edge.



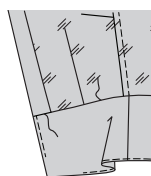
**56.** Bring peplum sections together at center back, matching small dots. Baste.



**57.** Open out lower edges of plackets. Pin peplum to bodice, matching centers, symbols and seams, clipping peplum where necessary. Stitch, keeping pressed edge of lining free. Trim. Clip to stitching at placket seams, as shown. Press seam toward bodice, pressing in remainder of seam allowances on plackets.

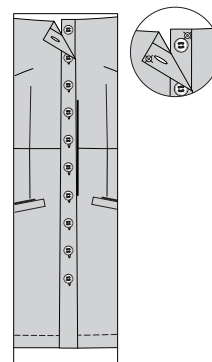


**58.** Turn down lining. Turn in placket. **SLIPSTITCH** pressed edges over seams.



**Views A, B:**

**59.** Make buttonholes in right front at markings. Lap opening edges, as shown, matching centers. Using buttonholes as guides, make button markings on left front. Sew buttons at markings. Sew snaps to neck as shown.



## SHORTS C

### FRONT AND BACK

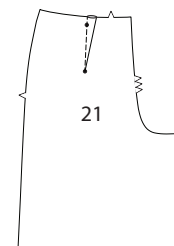
**1.** Stitch **DART** in **FRONT** (20). Press dart toward center.

**REINFORCE** inner corner of front along stitching lines, pivoting at small and large dots.

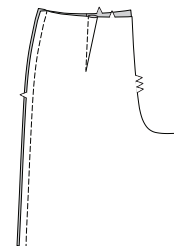


Construct welt and pocket in same manner as **Skirt A**. See Finishing **View A**, steps 34 through 39.

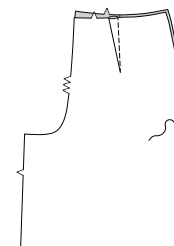
**2.** Stitch **DART** in **BACK** (21). Press dart toward center.



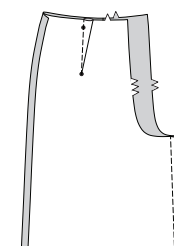
**3.** Stitch right front and right back together at side.



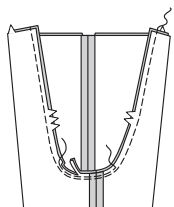
**4.** Stitch left front and left back together at side, leaving open from 3" (7.5cm) below notch to upper edge.



**5.** Stitch front to back at inner leg seam.



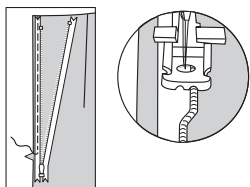
**6.** For crotch seam, turn one pants leg right side out; slip inside remaining pants leg. Stitch crotch seam. Stitch again 1/4" (6mm) away in seam allowance along curve, as shown. Trim close to second stitching.



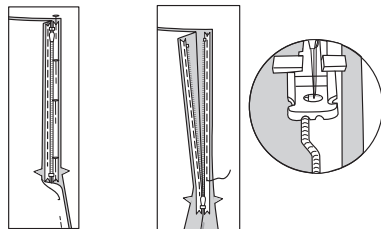
## ZIPPER AND FINISHING

**NOTE:** The zipper is longer than the zipper opening and will be adjusted after the zipper is inserted. Stitch the invisible zipper using an invisible zipper foot.

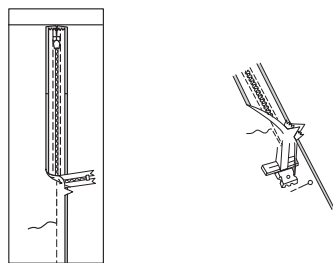
**7.** Open the zipper and press the tape using a cool iron. On OUTSIDE, pin RIGHT side of the zipper face down on the RIGHT side of the zipper opening. Have the coil along the seam line, the tape within the seam allowance and the top stop 3/4" (2cm) below upper edge, as shown. Hand-baste along center of the tape. Position zipper foot at the top of the zipper with RIGHT groove of the foot over coil. Stitch along tape to notch. Back-stitch to reinforce.



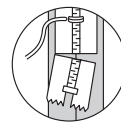
**8.** Pin the remaining half of the zipper to the LEFT side of the zipper opening in same manner. Make sure the upper edges of the garment are even. Hand-baste along the center of the tape. Position zipper foot at the top of the zipper with LEFT groove over the coil. Stitch along tape to notch. Back-stitch to reinforce.



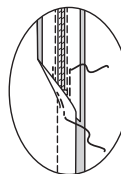
**9.** Close zipper and check that it is invisible from the OUTSIDE. Pull the free ends of the zipper tape away from the seam allowance. Pin remaining left side seam together below zipper. Position zipper foot all the way to the LEFT so the needle goes down through the outer notch of the foot. Start stitching seam 1/4" (6mm) above lowest stitch and slightly to the LEFT. Stitch remainder of seam, connecting with previous stitching.



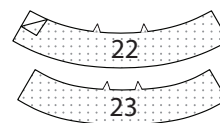
**10.** If the zipper is longer than the opening, using a strong thread, hand-sew a few small stitches across ends of coils at end of opening. Trim away lower end of zipper tape to within 5/8" (1.5cm) of hand-stitches.



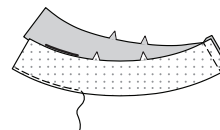
**11.** If you prefer, open out each seam allowance at end of zipper and stitch tape to seam allowance.



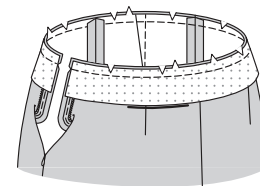
**12.** Pin INTERFACING (22) and (23) to wrong sides of FRONT FACING (22) and BACK FACING (23). Fuse, following manufacturer's instructions.



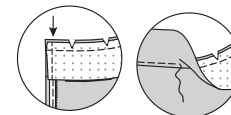
**13.** Stitch front facing to back facing at right side edge. **FINISH** lower edge of facing.



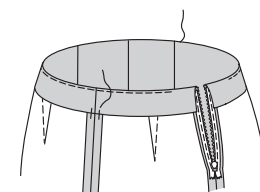
**14.** Open out left side opening edges of shorts, rolling the zipper teeth away from the opening edge. With RIGHT sides together, pin facing to shorts matching centers and side seam. Stitch upper edge. Trim seam.



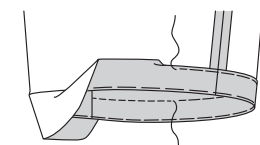
**15.** Pin side opening edges together. Using an adjustable zipper foot, stitch 1/2" (1.3cm) from left side edges, keeping zipper teeth free. Trim corners. Do not trim side edges. **UNDERSTITCH** facing as far as possible.



**16.** Turn facing and left side edges to INSIDE, rolling zipper teeth back in place; press. To keep the facing from rolling to OUTSIDE, secure it at the seam allowances by tacking it by hand.



**17.** Turn up shorts hem. Baste close to fold. Turn in 1/4" (6mm) on raw edge. Baste hem in place close to upper edge. Press. **TOPSTITCH** hem along upper basting.





# Congrats!

You've completed your sewing adventure

---

## SHARE YOUR LOOK



Post your pattern and tag us  
**@simplicity\_creative\_group** and **#knowmepatterns**  
for a chance to be featured on our social media.

Look for more PDF patterns at **simplicity.com**

Have a question or need help with your sewing project call us at  
1-800-782-0323



KnowMe ©2023 a division of IG Design Group Americas Inc. • Atlanta, GA 30342 USA [www.thedesigngroup.com](http://www.thedesigngroup.com) • All Rights Reserved. [www.mccall.com](http://www.mccall.com) • Made in the U.S.A. Fabriqué aux États-Unis.  
To be used for individual private home use only and not for commercial or manufacturing purposes. • À usage privé seulement et non à des fins commerciales ou de production en série. • Para uso privado solamente, no se puede utilizar con propósitos de comercialización o de producción en serie.