

@_donnyQ



>> MEN'S CONVERTIBLE PANTS AND
SHORTS
SKILL LEVEL: AVERAGE

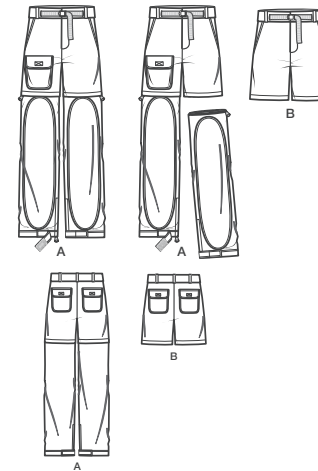


THINGS YOU NEED:

- > **A,B:** One 7" (18cm) zipper, 3/4" (2cm) hook and loop tape: 8" (20cm) length for **A**, 4" (10cm) length for **B**, 1 3/8 yds. (1.2m) of 1" (2.5cm) twill tape or webbing, one 5/8" (1.5cm) button, one parachute buckle with a 1" (2.5cm) opening. **Also for A:** Two 9" (23cm) zippers, two 34" (86cm) separating zippers (adjust to fit).

SUGGESTED FABRICS:

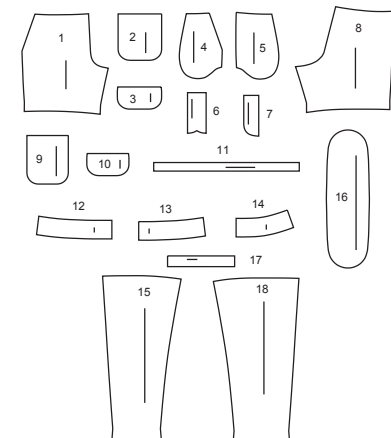
- > Cotton Blends, Lightweight Twill, Linen Blends, Polyester Blends, Ripstop Nylon. **Interfacing:** Lightweight Fusible.



Your printed tile pieces should be assembled before you move on to this step!

PIECES (18)

- 1 FRONT - A,B
- 2 FRONT POCKET- A
- 3 FLAP - A
- 4 POCKET FACING - A,B
- 5 SIDE FRONT AND POCKET - A,B
- 6 RIGHT FLY - A,B
- 7 LEFT FLY FACING- A,B
- 8 BACK - A,B
- 9 BACK POCKET - A,B
- 10 FLAP - A,B
- 11 CARRIERS - A,B
- 12 RIGHT FRONT WAISTBAND - A,B
- 13 LEFT FRONT WAISTBAND - A,B
- 14 BACK WAISTBAND - A,B
- 15 LOWER FRONT - A
- 16 FRONT PATCH - A
- 17 TAB - A
- 18 LOWER BACK - A



YARDAGE CHART

SIZES	34	36	38	40	42	44	46	48	50	52	
PANTS A (SITS 1" (2.5CM) BELOW WAIST)											
45"*	3 $\frac{1}{8}$	3 $\frac{1}{8}$	3 $\frac{1}{4}$	3 $\frac{3}{8}$	3 $\frac{1}{2}$	3 $\frac{1}{2}$	3 $\frac{5}{8}$	3 $\frac{5}{8}$	4	4 $\frac{1}{8}$	yds.
60"*	2 $\frac{1}{2}$	2 $\frac{1}{2}$	2 $\frac{5}{8}$	2 $\frac{5}{8}$	2 $\frac{3}{4}$	2 $\frac{3}{4}$	2 $\frac{3}{4}$	2 $\frac{3}{4}$	2 $\frac{7}{8}$	2 $\frac{7}{8}$	"
115cm*	2.90	2.90	3.00	3.10	3.20	3.20	3.30	3.30	3.70	3.80	m.
150cm*	2.30	2.30	2.40	2.40	2.50	2.50	2.50	2.50	2.60	2.60	"
INTERFACING A- 20" (51cm) - 1 yd. (1.00m)											
SHORTS B (SITS 1" (2.5CM) BELOW WAIST)											
45"*	1 $\frac{5}{8}$	1 $\frac{5}{8}$	1 $\frac{5}{8}$	1 $\frac{5}{8}$	1 $\frac{7}{8}$	1 $\frac{7}{8}$	2	2	2	2	yds.
60"*	1 $\frac{3}{8}$	1 $\frac{3}{8}$	1 $\frac{3}{8}$	1 $\frac{3}{8}$	1 $\frac{3}{8}$	1 $\frac{3}{8}$	1 $\frac{3}{8}$	1 $\frac{3}{8}$	1 $\frac{1}{2}$	1 $\frac{1}{2}$	"
115cm*	1.50	1.50	1.50	1.50	1.70	1.70	1.70	1.80	1.80	1.80	m.
150cm*	1.30	1.30	1.30	1.30	1.30	1.30	1.30	1.30	1.30	1.30	"
INTERFACING B- 20" (51cm) - $\frac{3}{4}$ yd. (0.70m)											

FINISHED GARMENT MEASUREMENTS

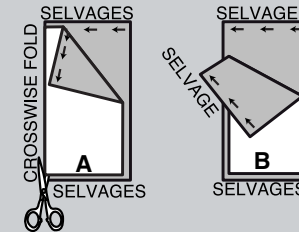
SIZES	34	36	38	40	42	44	46	48	50	52	
A,B HIP	35 $\frac{1}{2}$	37 $\frac{1}{2}$	39 $\frac{1}{2}$	41 $\frac{1}{2}$	43 $\frac{1}{2}$	45 $\frac{1}{2}$	47 $\frac{1}{2}$	49 $\frac{1}{2}$	51 $\frac{1}{2}$	53 $\frac{1}{2}$	ins.
	90	95	100	105	110	116	121	126	131	136	cm.
WIDTH, EACH LEG											
PANTS A	12 $\frac{3}{4}$	13 $\frac{1}{2}$	14 $\frac{1}{4}$	15	15 $\frac{3}{4}$	16 $\frac{1}{2}$	17 $\frac{1}{4}$	18	18 $\frac{3}{4}$	19 $\frac{1}{2}$	ins.
	32	34	36	38	40	42	44	46	48	50	cm.
SHORTS B	21 $\frac{3}{4}$	23	24 $\frac{1}{4}$	25 $\frac{1}{2}$	26 $\frac{3}{4}$	28	29 $\frac{1}{4}$	30 $\frac{1}{2}$	31 $\frac{3}{4}$	33	ins.
	55	58	62	65	68	71	74	77	81	84	cm.
FINISHED SIDE LENGTH FROM WAIST											
PANTS A	41 $\frac{3}{4}$	42	42 $\frac{1}{4}$	42 $\frac{1}{2}$	42 $\frac{3}{4}$	43	43 $\frac{1}{4}$	43 $\frac{1}{2}$	43 $\frac{3}{4}$	44	ins.
	106	107	107	108	109	109	110	110	111	112	cm.
SHORTS B	16 $\frac{1}{4}$	16 $\frac{1}{2}$	16 $\frac{3}{4}$	17	17 $\frac{1}{4}$	17 $\frac{1}{2}$	17 $\frac{3}{4}$	18	18 $\frac{1}{4}$	18 $\frac{1}{2}$	ins.
	41	42	43	43	44	44	45	46	46	47	cm.

BODY MEASUREMENTS

SIZES	34	36	38	40	42	44	46	48	50	52	
CHEST	34	36	38	40	42	44	46	48	50	52	ins.
	87	92	97	102	107	112	117	122	127	132	cm.
WAIST	28	30	32	34	36	39	42	44	46	48	ins.
	71	76	82	87	92	99	107	112	117	122	cm.
HIP	35	37	39	41	43	45	47	49	51	53	ins.
	89	94	99	104	109	115	119	124	128	135	cm.

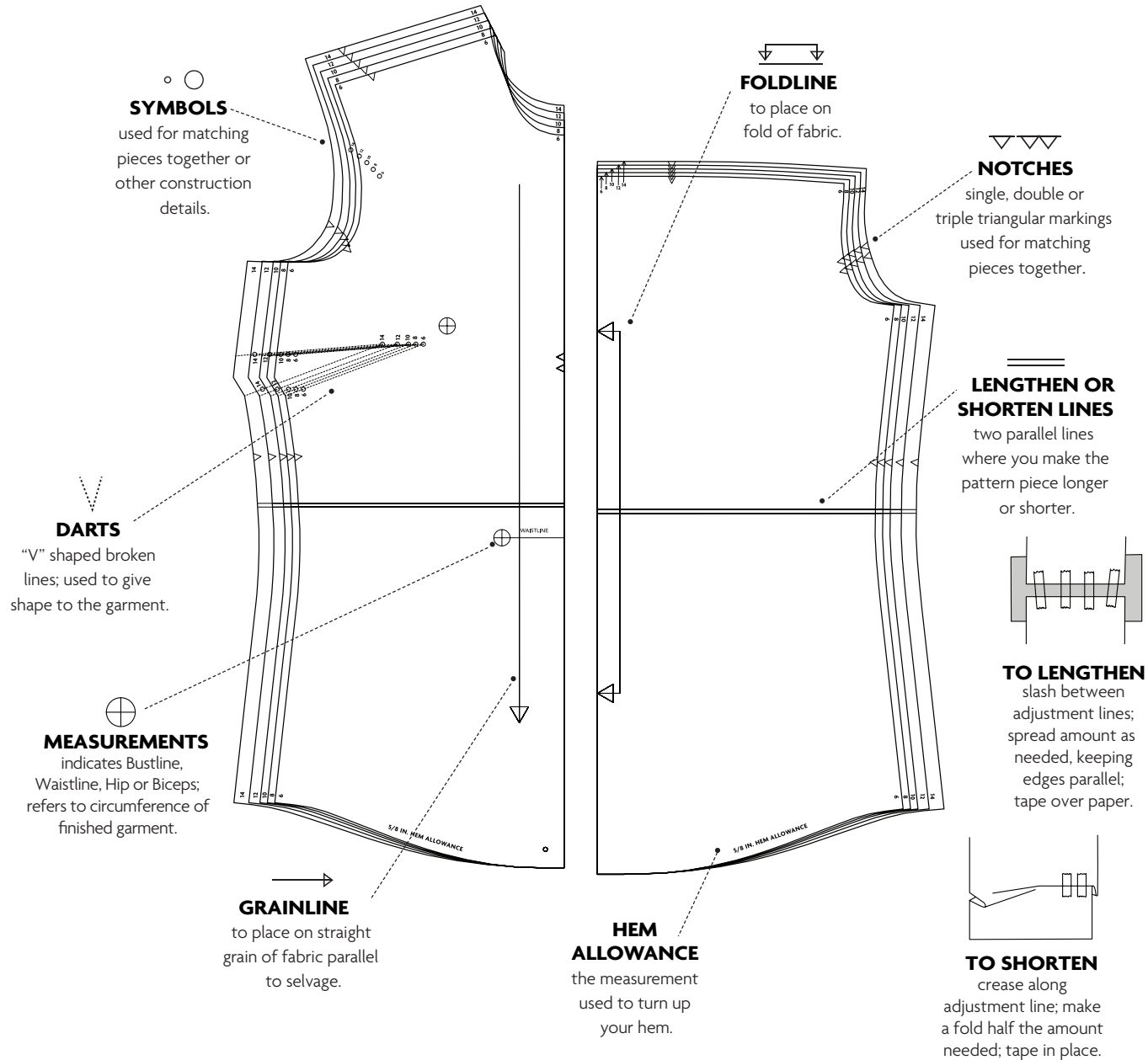
CUTTING AND MARKING

- > **SHRINK FABRIC** if not labeled pre-shrunk. Press.
- > **CIRCLE LAYOUT** for View, Size, Fabric Width.
- > Use **WITH NAP** layout for fabrics with one-way designs, nap, pile or surface shading. Because most knits have surface shading, a with nap layout is used.
- > For **DOUBLE THICKNESS (WITH FOLD)**, fold fabric with right sides together.
- > ***DOUBLE THICKNESS (WITHOUT FOLD)**, for fabrics with nap, fold fabric crosswise, right sides together. Mark as shown. Cut along crosswise fold of fabric (A). Turn upper layer 180° so arrows go in same direction and place over lower layer, right sides together (B).
- > For **SINGLE THICKNESS**, place fabric right side up. (For Fur Pile fabrics, place pile side down.)



- > Before **CUTTING**, place all pieces on fabric according to layout. Pin.
(Layouts show approximate position of pattern pieces; position may vary according to your pattern size.)
- > ★ Cut other pieces first, allowing enough fabric to cut this piece. Open fabric. Cut piece on single layer of fabric with piece face up on right side of fabric.
- > Cut accurately, cutting notches outward.
- > Before removing pattern, **TRANSFER MARKINGS** and lines of construction to **WRONG SIDE** of fabric, using Pin and Chalk Pencil method or Tracing Paper and Dressmaker Wheel. Markings needed on right side of fabric should be thread traced.
NOTE: Broken-line boxes (a! b! c!) in layouts represent pieces cut by measurements provided.
- > Prewash your fabric using a method that's suitable for the fabric type.
- > Fold fabric with right sides together, matching **SELVAGES**.
- > Pin your pattern pieces to the fabric as shown below and cut them out using a sharp pair of dressmaker's shears.

PATTERN MARKINGS

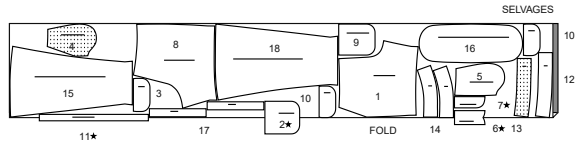


CUTTING LAYOUTS

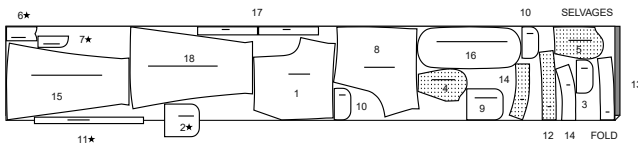
PANTS A

use pieces: 1 2 3 4 5 6 7 8 9 10 11 12 13 14 15 16 17 18

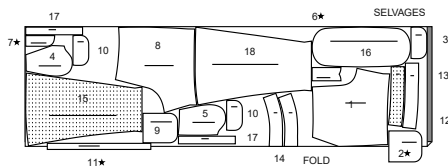
45" (115 cm)
with nap
sizes 34 36 38 40 42 44 46 48



45" (115 cm)
with nap
sizes 50 52



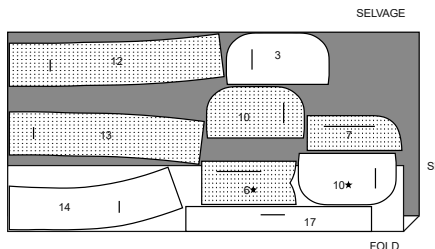
60" (150 cm)
with nap
all sizes



INTERFACING A

use pieces: 3 6 7 10 12 13 14 17

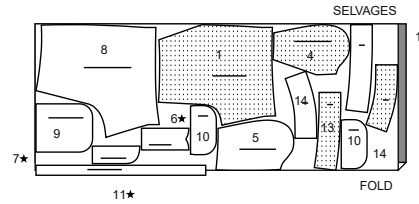
20" (51 cm)
without nap
all sizes



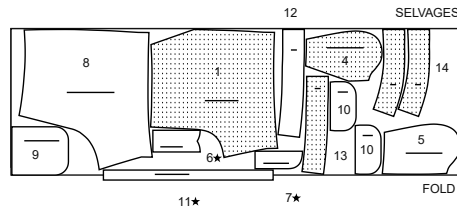
SHORTS B

use pieces: 1 4 5 6 7 8 9 10 11 12 13 14

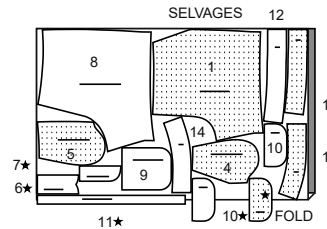
45" (115 cm)
with nap
sizes 34 36 38 40



45" (115 cm)
with nap
sizes 42 44 46 48 50



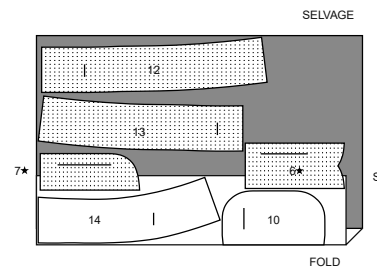
60" (150 cm)
with nap
all sizes



INTERFACING B

use pieces: 6 7 10 12 13 14

20" (51 cm)
without nap
all sizes



PATTERN PIECES WILL BE IDENTIFIED BY NUMBERS THE FIRST TIME THEY ARE USED.

SEWING INFORMATION

5/8" (1.5cm) SEAM ALLOWANCES ARE INCLUDED,

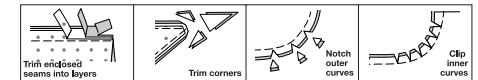
(unless otherwise indicated)

ILLUSTRATION SHADING KEY

Right Side	Wrong Side	Interfacing	Lining	Underlining

Pin or baste seams, right side together, matching notches. Fit garment before stitching major seams.

Press seam allowances flat; then open unless otherwise stated. Clip where necessary so they lie flat.



GLOSSARY

Sewing terms appearing in **BOLD TYPE** in Sewing Instructions are explained below.

EDGE-STITCH- On **OUTSIDE**, stitch close to finished edge or seam, adjusting the stitch length and/or tension as necessary; test first.

REINFORCE - Stitch along seamline where indicated in sewing instructions, using small machine stitches.

STAY-STITCH- Stitch 1/2" (1.3cm) from cut edge in direction of arrows. This stitching stays in permanently to prevent stretching on curved edges. (Shown only in the first illustration.)

TOP-STITCH - On **OUTSIDE**, stitch 1/4" (6mm) from finished edge OR seam unless otherwise instructed in Sewing Directions. Adjust stitch length and/or tension as necessary; test first.

UNDERSTITCH- Press facing and seam away from pants/shorts, stitching through facing and seam allowances close to seam.



@_donnyQ

SEWING DIRECTIONS

GENERAL DIRECTIONS

INTERFACING- Pin interfacing to **WRONG** side of fabric. Fuse interfacing in place following manufacturer's directions.

ZIPPER LENGTH - You may need to adjust the length of your Separating Zipper. IF you don't wish to shorten your zippers, custom zippers are available online for purchase.

Always shorten separating zippers from the top

A. Measure opening edge as between seam lines on at inner leg, less a scant 1/4" (6mm).

B. Mark desired length on zipper tape as specified in sewing directions.

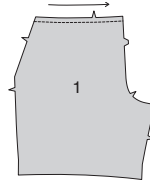
C. Cut off extra zipper 7/8" (2.2cm) above mark, making sure that the zipper pull is well below where you are going to cut. Do not discard the pieces.

D. Using pliers, remove teeth above your shortening mark. Pry top-stops open and remove them from the discarded pieces of zipper. Reinstall top stops by crimping them in place immediately above the last remaining tooth. For plastic zippers, you may need to purchase a top stop.

PANTS A, SHORTS B

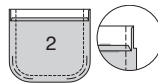
NOTE: Illustrated for **VIEW A** unless otherwise indicated.

1. STAY-STITCH upper edge of **FRONT (1)** sections.



POCKET AND FLAP A

2. Press under 1/4" (6mm) on upper edge of **POCKET (2)**. Turn upper edge to **OUTSIDE** along fold line, forming a facing. Stitch along seam line on raw edges. To ease curved edge of pocket, stitch 1/4" (6mm) **INSIDE** the seam allowance, using a long machine-stitch. Trim seam allowance in the facing area to 1/4" (6mm).



3. Turn corners **RIGHT** side out, turning facing to the **WRONG** side. Press, pressing under raw edges along stitching. Pull up ease stitches to shape the curve. To eliminate bulk, notch out the fullness in the seam allowance along the curves as far as the ease stitches. Stitch facing close to inner edge.



4. Cut one piece of hook and loop tape to fit within solid lines on pocket. Separate tape. On **OUTSIDE**, pin soft section to pocket within solid lines; stitch close to outer edges. Set aside rough section for flap.



5. Apply **INTERFACING** to **FLAP (3)**. With **RIGHT** sides together, stitch facing to flap, leaving edge with small dots open. Trim seam; clip curves.



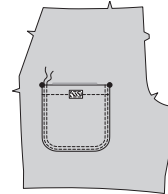
6. Turn flap; press. Machine-baste 5/8" (1.5cm) from raw edge. Pin rough tape to interfaced flap facing within solid lines; stitch close to outer edges.



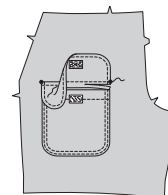
7. TOP-STITCH finished edges of flap. On **OUTSIDE**, stitch tape diagonally between corners.



8. Pin pocket to **RIGHT** front, matching large dots. **EDGE-STITCH** side and lower edges. **TOPSTITCH** 1/4" (6mm) away from **EDGE-STITCHING**.



9. Pin flap to **RIGHT** front, placing basting along flap line, matching small dots, as shown. Stitch along basting. Trim close to stitching. Turn flap down; press. **TOP-STITCH** upper edge, encasing seam.

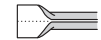


CONTINUE AS FOLLOWS FOR VIEWS A, B

10. Fold **CARRIERS (11)** in half, lengthwise with **WRONG** sides together. Press, setting in a crease.



11. Open out long edges of carriers and turn them to **WRONG** side so that they meet at the crease. Press.



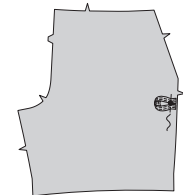
12. Fold carrier in half lengthwise, bringing pressed edges together. **EDGE-STITCH** long edges. Cut carrier into six pieces, each 4-1/4" (11cm) long. Set five pieces aside to be used as belt carriers in a later step.



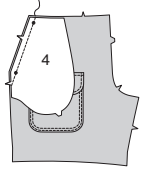
13. To make keychain loop, fold one carrier in half, bringing seamed edges together, as shown. Hand-tack within seam allowance to keep ends together. **NOTE:** When completed, the keychain loop will be **INSIDE** the **LEFT** pocket and you will be able to attach a key ring to it to hold your keys.



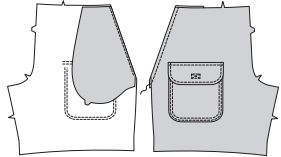
14. ON **OUTSIDE**, center and pin carrier to **LEFT** front over large dot on side seam, having raw edges even; baste. Set remaining carriers aside for waistband.



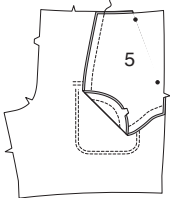
15. With RIGHT sides together and raw edges even, pin one POCKET FACING (4) to each front (over keychain loop), matching notches and small dots. Stitch. Trim seam.



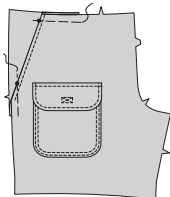
16. UNDERSTITCH pocket facing, stitching through keychain loop. Turn pocket facing to INSIDE. Press. **TOP-STITCH** finished edge.



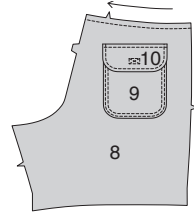
17. On INSIDE, pin front POCKET (5) to pocket facing, matching small dots, and having raw edges even. Stitch double notched edge, keeping pants/shorts free.



18. On OUTSIDE, lap front over pocket section, matching small dots, having finished edge of pocket along placement line and raw edges even; pin. Baste side and upper edges together.



19. STAY-STITCH upper edge of BACK (8) sections. Make back pockets and flaps, and apply to back sections same as for RIGHT front, using POCKET (9) and FLAP (10) sections - see steps 2 through 9.



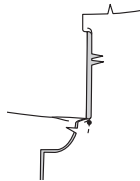
CONTINUE AS FOLLOWS FOR SHORTS B

20. Construct fly front as follows:

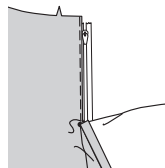
A-Stitch front sections together at center front between large dot and notch.



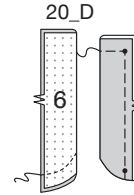
B-Turn in RIGHT front opening edge along foldline; press.



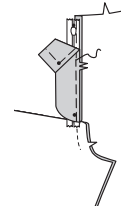
C-Place closed zipper (face up) under right front opening edge, having pressed edge close to zipper teeth and zipper stop at small dot. Using a zipper foot, baste close to pressed edge.



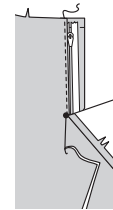
D- Apply INTERFACING to RIGHT FLY (6). With right sides together, fold right fly in half lengthwise. Stitch lower edge. Trim. Turn. Press. Baste raw edges.



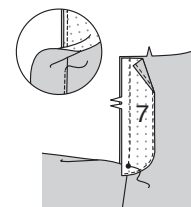
E- On inside, pin right fly to RIGHT front opening edge (over zipper), matching notches and small dots, having raw edges even. Baste along previous basting for zipper.



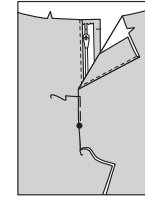
F- On outside, using a zipper foot, stitch close to pressed edge of front through all layers.



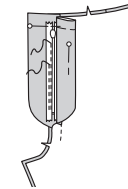
G- Apply INTERFACING to LEFT FLY FACING (7). Finish outer edge. Pin fly facing to LEFT front opening edge, matching notches, and large dots. Stitch, ending at large dot. Trim. **UNDERSTITCH** fly facing. Turn facing to inside.



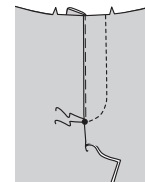
H- Lap LEFT front over RIGHT, matching centers and large dots. Baste close to edge through all thicknesses.



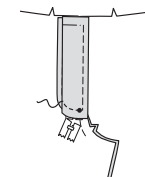
I- Pin right fly out of the way. Open out fly facing. Pin remaining zipper tape to fly facing, keeping RIGHT front free. Using a zipper foot, stitch in place close to zipper teeth and along center of zipper tape.



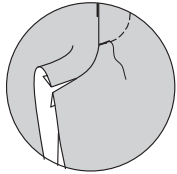
J-Turn facing down. On outside, stitch LEFT front along stitching lines, keeping RIGHT fly free.



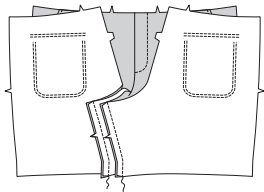
K-Turn RIGHT fly back in place. On inside, hand tack fly and facing together at lower edge, as shown. Trim away excess zipper tape even with lower edge of fly, if needed.



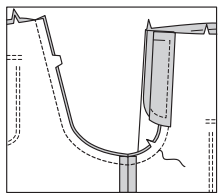
L- If desired, on outside, machine-stitch a bar tack across lower end of fly through all thicknesses.



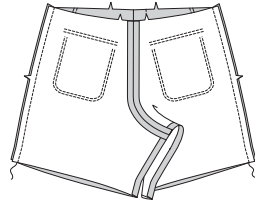
21. Stitch front to back at inner seam.



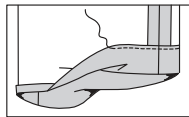
22. Pin center seam, matching inner leg seams and notches. Stitch remainder of seam, connecting to stitching on front. To reinforce seam, stitch again over first stitching.



23. Stitch back to front at side seams.



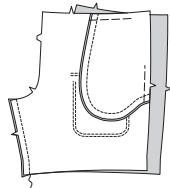
24. Press up hem on lower edge; press under 1/4" (6mm) on inner raw edge. Stitch close to inner pressed edge.



CONTINUE AS FOLLOWS FOR PANT A

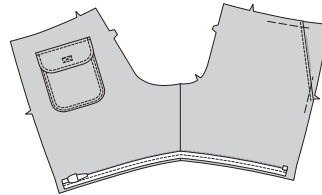
25. Stitch front to back at inner leg seam.

NOTE: It may be necessary to shorten the length of your zipper before application. See **GENERAL DIRECTIONS** for **ZIPPER LENGTH** adjustment. If you don't want to shorten your zipper, custom sized zippers are available for purchase online.

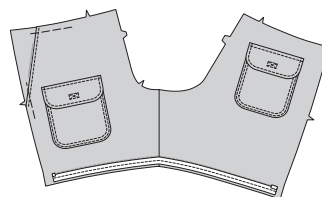


26. Separate one zipper. Apply half of zipper to LEFT front and back, as follows:

On **OUTSIDE**, pin slider side of zipper face down to lower edge of LEFT front and back, having zipper tape 1/4" (6mm) from raw edge, top stop 1/8" (3mm) away from LEFT front side seam, and end of bottom 5/8" (1.5cm) away from LEFT back side edge. Hand-baste zipper in place. Stitch along seam line, using an adjustable zipper foot. Set aside remaining half of zipper for lower LEFT leg.

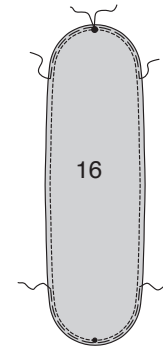


27. Separate remaining long zipper. Apply half of zipper, **WITHOUT** slider, to RIGHT front and back in same manner as for LEFT front and back, this time placing top stop 1/8" (3mm) away from RIGHT front side seam and end of bottom stop 5/8" (1.5cm) away from RIGHT back side edge.



28. Stitch **FRONT PATCH** (16) sections along 3/8" (1cm) seam line on curved edges.

To ease curved edges, stitch 1/4" (6mm) **INSIDE** seam allowance, using a long machine-stitch.

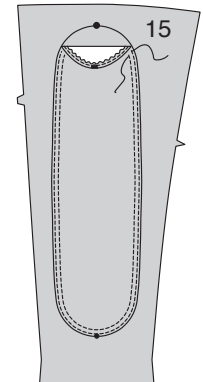


29. Press under raw edges along seam and stitching. Pull up ease stitches to shape curves.

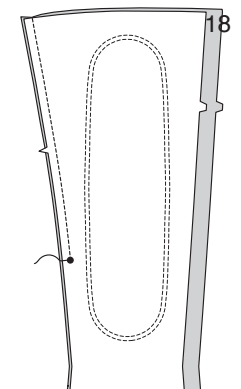


30. On **OUTSIDE**, pin patch to **LOWER FRONT** (15), having outer edge along placement line, matching small and large dots.

EDGE-STITCH outer edges. **TOPSTITCH** 1/4" (6mm) from **EDGE-STITCHING**.

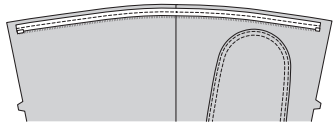


31. Stitch lower front to left **LOWER BACK** (18) at inner seam above large dot.

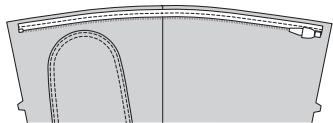


32. On OUTSIDE, pin remaining side of zipper to upper edge of left lower front and back, having zipper tape 1/4" (6mm) from raw edge, top stop 1/8" (3mm) away from LEFT front side seam, and end of bottom stop 5/8" (1.5cm) away from left back side edge. Make sure that both sides of zipper are aligned and that inner seams match.

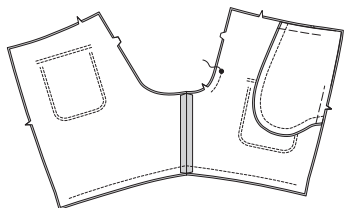
Hand-baste zipper in place. Stitch along seam line, using an adjustable zipper foot.



33. Stitch remaining slider side of zipper to upper edge of RIGHT lower front and back in same manner as for LEFT lower front and back, this time having top stop 1/8" (3mm) away from right front side seam and end of bottom 5/8" (1.5cm) away from right back side edge, making sure that both sides of zipper are aligned and that inner seams match.



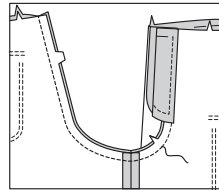
34. Stitch front and back sections together at center between large dot and notch, matching inner seams.



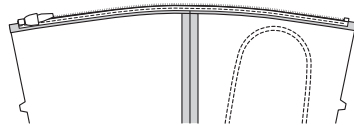
35. Apply fly and zipper to shorts same as for **View B**, step 20, omitting step A and keeping back out of the way.



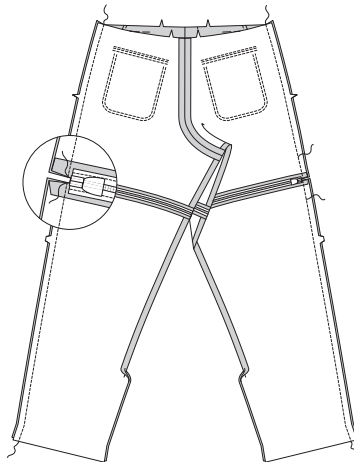
36. Pin center seam, matching inner leg seams and notches. Stitch remainder of seam, connecting to stitching on front. To reinforce seam, stitch again over first stitching.



37. Press lower legs away from zipper.



38. Attach lower legs to shorts. Pin side seams. Stitch shorts, backstitching at zipper to reinforce. Stich lower leg at sides, backstitching at zipper to reinforce.

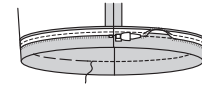


39. Detach shorts.

Turn hem on lower edge of shorts to INSIDE, having the zipper flat and the teeth facing the hem fold; press and pin hem in place.

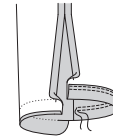
Hand-baste 1/8" (3mm) below zipper stitching through both fabric thicknesses.

On OUTSIDE, stitch as basted, forming a fold to conceal zipper. Remove basting.



40. Press up 1-3/4" (4.5cm) hem on lower edge of lower leg.

Press under 1/4" (6mm) on raw edge. Stitch close to inner pressed edge and 1/4" (6mm) below first stitching.

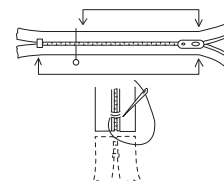


41. It may be necessary to adjust the length of your zipper. Measure opening on side seam from large dot to hemmed edge.

Close zipper and measure from the top stop down along the teeth to the length needed, less 1/8" (3mm). Mark new length.

With matching buttonhole twist or heavy-duty thread, make several overcast stitches across zipper teeth at marking. Trim away lower end of zipper tape to within 1/2" (1.3cm) of overcast stitches.

If the zipper coils are too heavy to stitch across, remove coils below overcast stitches.

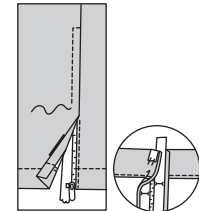


42. Press under 5/8" (1.5cm) on RIGHT front opening edge and 1/2" (1.3cm) on RIGHT back opening edge.

Pin back edge to zipper tape, placing pressed edge close to zipper tape, having top at hemmed edge. Turn upper end of zipper tape over hemmed edge. Stitch close to pressed edge using an adjustable zipper foot.

Pin front edge to zipper tape, lapping right front 1/8" (3mm) over RIGHT back. Turn upper end of zipper tape over hemmed edge.

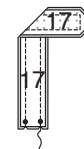
Baste 3/8" (1cm) from pressed edge and 1/4" (6mm) below end of zipper. Stitch as basted, using an adjustable zipper foot and squaring stitches across lower end, as shown.



43. Make two tabs, as follows: Apply INTERFACING to TAB (17) sections.

Stitch two tab sections together in a 3/8" (1cm) seam, leaving ends with small dots open.

Trim corners.



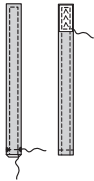
44. Turn tab; press. Baste raw edges together.

TOP-STITCH finished edges.

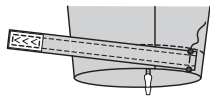
Cut one piece of hook and loop tape to fit within solid lines on tab.

Separate tape.

Pin rough half of tape to interfaced side of tab within solid lines. Stitch close to outer edges of tape.

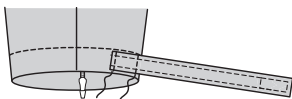


45. With hook tape right sides up and raw ends facing toward inner seam, pin tab to lower front, matching small dots. Stitch along broken line between small dots.

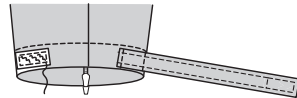


46. Turn tab toward zipper opening, encasing raw edge; press.

Stitch 1/4" (6mm) from seamed edge and 1-1/2" (3.8cm) away from first stitching as shown.

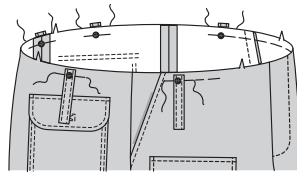


47. Pin soft half of tape to back leg within solid lines. Stitch close to outer edges of tape. When wearing pant, fasten tab as shown on envelope.



CONTINUE AS FOLLOWS FOR VIEWS A, B

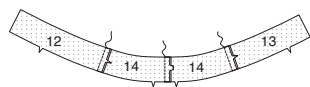
48. On **OUTSIDE**, center and pin remaining carriers to upper edge of pants/shorts over large dots, having raw edges even. Baste.



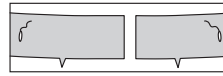
49. Apply **INTERFACING** to **RIGHT FRONT WAISTBAND (12)**, **LEFT FRONT WAISTBAND (13)**, and **BACK WAISTBAND (14)** sections.

Stitch center back seam of back waistbands, matching double notches. Stitch left and right waistband sections to back waistband, matching single notches.

This is your waistband; the remaining sections will be used as waistband facings.

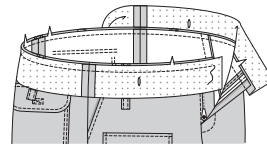


50. Make buttonholes at inner vertical markings on front waistbands.



51. With **RIGHT** sides together, pin waistband to pants/shorts, matching side seams, centers front and back. Stitch upper edge.

Trim seam; press waistband out, pressing seam toward waistband.

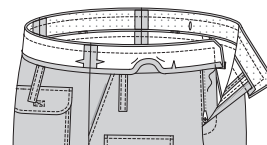


52. Stitch seams of facing sections same as for waistband. Press under 1/2" (1.3cm) on notched edge.

With **RIGHT** sides together and raw edges even, pin facing to waistband matching seams, centers front, and back. Stitch across ends and along upper edge.

Trim seam and corners. Clip curves if necessary.

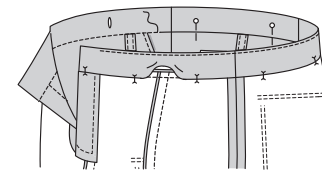
UNDERSTITCH upper edge as far as possible.



53. Turn facing to inside; press. Pin pressed edge of facing 1/8" (3mm) over seam, placing pins on **OUTSIDE**.

On **OUTSIDE**, stitch in the ditch or "groove" of waistband seam, catching in pressed edge of facing on **INSIDE**.

TIP- To conceal the stitches in the ditch or groove of the seam, try using a zipper foot, spreading the pants/shorts and waistband away from the seam with your fingers.

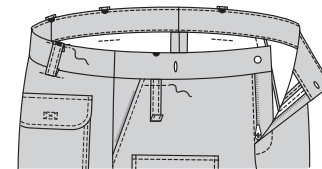


54. Make buttonhole on **LEFT** end of waistband at marking. Sew button to end of **RIGHT** waistband at small dot.

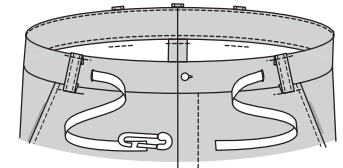
Stitch across each carrier 1/2" (1.3cm) below lower waistband seam, as shown.

Turn up carrier, turning under raw edge 1/2" (1.3cm).

Center over large dot, having end of carrier even with waistband. Stitch close to upper edge.



55. Attach a pin to one end of twill tape or webbing and on outside. Insert pinned end through left buttonhole, go around back, and come out of right buttonhole.



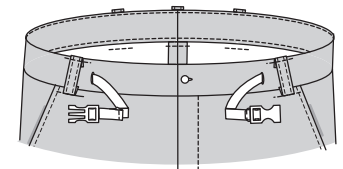
56. Release buckle to separate male part from female part.



57. Insert ends of belt through buckle following manufacturer's directions, having the female part on the left end and the male on the right. Turn under female end of belt encasing buckle, turning under 1/4" on raw edge; stitch in place.

Try on belt to determine finished length, allowing extra length on male side to keep free for further adjustment. To finish free end of male buckle, turn under 1/4" (6mm) twice and stitch.

TIP- Nylon webbing may be too bulky to finish by turning it under twice. Try using a seam sealant or clear nail polish on raw edge- test on a scrap first.





Congrats!

You've completed your sewing adventure

**SHARE
YOUR** LOOK



Post your pattern and tag us
@simplicity_creative_group and **#knowmepatterns**
for a chance to be featured on our social media.

Look for more PDF patterns at **simplicity.com**

Have a question or need help with your sewing project call us at
1-800-782-0323

