



@brittanyjjones



>> MISSES' AND WOMEN'S DRESS  
IN TWO LENGTHS  
SKILL LEVEL: EASY



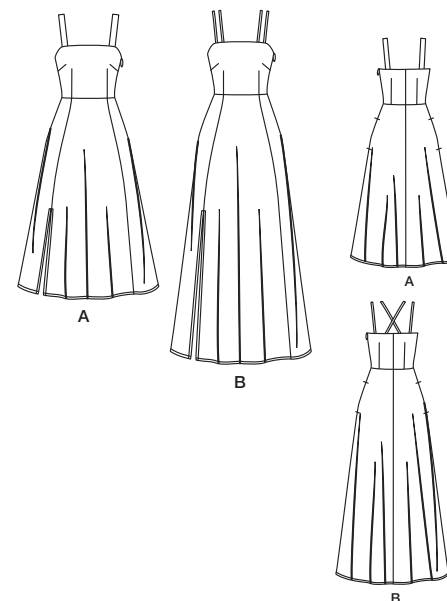
PDF PATTERNS

## THINGS YOU NEED:

> **A,B:** One invisible zipper: 14" (36cm) for Misses', 15" (38cm) for Women's.

## SUGGESTED FABRICS:

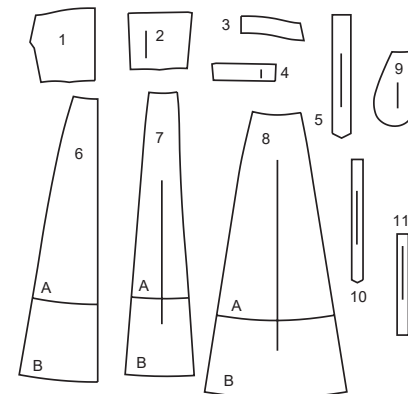
> Chambray, Cotton Blends, Crepe de Chine, Double Knit, Jersey, Linen Blends, Modal, Ponte, Poplin, Sateen, Scuba. **Lining:** Cotton Blends, Polyester Blends. **Interfacing:** Lightweight Fusible.



Your printed tile pieces should be assembled before you move on to this step!

## PIECES (11)

- 1 BODICE FRONT - A,B
- 2 BODICE BACK - A,B
- 3 FRONT INTERFACING - A,B
- 4 BACK INTERFACING - A,B
- 5 SHOULDER STRAP - A
- 6 SKIRT FRONT - A,B
- 7 SKIRT SIDE FRONT - A,B
- 8 SKIRT BACK - A,B
- 9 POCKET - A,B
- 10 STRAP - B
- 11 SHOULDER STRAP - B



## YARDAGE CHART

MISSSES'						WOMEN'S										
SIZES	10	12	14	16	18	20W	22W	24W	26W	28W	30W	32W	34W	36W	38W	
<b>LINING A,B</b>																
45"***	½	½	½	½	⅝	¾	¾	¾	¾	¾	¾	¾	¾	¾	⅞	yds.
115cm**	0.5	0.5	0.5	0.5	0.6	0.7	0.7	0.7	0.7	0.7	0.7	0.7	0.7	0.7	0.7	m.
<b>INTERFACING A,B</b>																
20"	¾	¾	¾	¾	¾	⅞	⅞	⅞	⅞	1	1	1	1	1	1⅞	yds.
51cm	0.6	0.7	0.7	0.7	0.7	0.8	0.8	0.8	0.8	0.8	0.9	0.9	0.9	0.9	1.0	m.
<b>DRESS A</b>																
45"*	2⅜	2⅜	2⅜	2½	2½	2¾	2¾	2⅞	3	3⅜	3⅜	3⅜	3½	3½	3⅝	yds.
60"*	2	2	2	2	2	2⅜	2⅜	2⅜	2⅜	2⅜	2⅜	2⅝	2⅝	2⅝	2⅝	"
115cm*	2.1	2.2	2.2	2.3	2.3	2.5	2.5	2.6	2.7	3.1	3.1	3.1	3.1	3.2	3.3	m.
150cm*	1.7	1.7	1.7	1.7	1.7	2.2	2.2	2.2	2.2	2.2	2.2	2.4	2.4	2.4	2.4	"
<b>DRESS B</b>																
45"*	3¼	3¼	3½	3⅝	3¾	4¼	4⅜	4⅜	4⅜	4⅜	4⅜	4⅜	4½	4½	4⅝	yds.
60"*	2⅝	2⅝	2⅝	2⅝	2¾	3	3	3	3	3	3	3⅜	3⅜	3⅜	3⅝	"
115cm*	2.9	3.0	3.2	3.3	3.4	3.9	3.9	3.9	4.0	4.0	4.0	4.0	4.0	4.1	4.2	m.
150cm*	2.4	2.4	2.4	2.4	2.5	2.7	2.7	2.7	2.7	2.7	2.7	3.0	3.1	3.1	3.3	"

## FINISHED GARMENT MEASUREMENTS

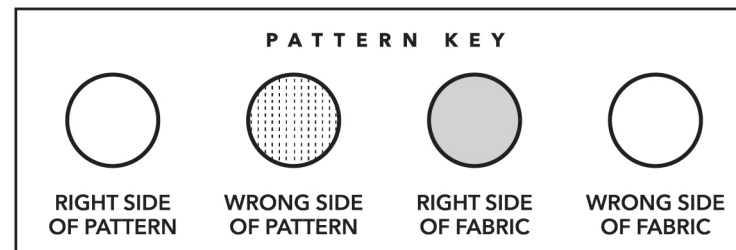
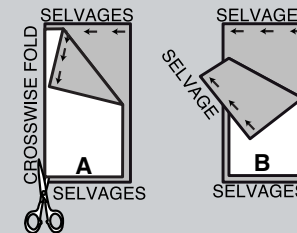
MISSSES'						WOMEN'S										
SIZES	10	12	14	16	18	20W	22W	24W	26W	28W	30W	32W	34W	36W	38W	
A,B BUST	35	36½	38½	40½	42½	43½	45½	47½	49 ½	51½	53½	55½	57½	59½	61½	ins.
	89	93	98	103	108	110	116	121	126	131	136	141	146	151	156	cm.
A,B WAIST	26½	28	30	32	34	35½	37½	39½	41½	43½	45½	47½	49½	51½	53½	ins.
	67	71	76	81	86	90	95	100	105	110	116	121	126	131	136	cm.
A,B HIP	41½	43	45	47	49	51	53	55	57	59	61	63	65	67	69	ins.
	105	109	114	119	124	130	135	140	145	150	155	160	165	170	175	cm.
WIDTH, LOWER EDGE																
DRESS A	67½	69	71	73	75	78½	80½	82½	84½	86½	88½	90½	92½	94½	96½	ins.
	171	175	180	185	191	199	204	210	215	220	225	230	235	240	245	cm.
DRESS B	83	84½	86½	88½	90½	94	96	98	100	102	104	106	108	110	112	ins.
	211	215	220	225	230	147	152	157	163	168	173	178	183	188	193	cm.
FINISHED BACK LENGTH FROM BASE OF NECK																
DRESS A	46	46¼	46½	46¾	47	47¾	48	48¼	48½	48¾	49	49¼	49½	49¾	50	ins.
	117	117	118	119	119	121	122	123	123	124	124	125	126	126	127	cm.
DRESS B	58	58¼	58½	58¾	59	59¾	60	60¼	60½	60¾	61	61¼	61½	61¾	62	ins.
	147	148	149	149	150	243	244	244	245	246	246	247	248	248	249	cm.

## BODY MEASUREMENTS

MISSSES'						WOMEN'S											
SIZES	10	12	14	16	18	20W	22W	24W	26W	28W	30W	32W	34W	36W	38W		
BUST	32½	34	36	38	40	42	44	46	48	50	52	54	56	58	60	ins.	
	83	87	92	97	102	107	112	117	122	127	132	137	142	147	152	cm.	
WAIST	25	26½	28	30	32	35	37	39	41½	44	46½	49	51½	53	54½	ins.	
	64	67	71	76	81	89	94	99	105	112	118	124	131	134	138	cm.	
HIP	34½	36	38	40	42	44	46	48	50	52	54	56	58	60	62	ins.	
	88	92	97	102	107	112	117	122	127	132	137	142	147	152	157	cm.	
BACK-NECK TO WAIST	16	16¼	16½	16¾	17	17¼	17⅜	17½	17⅝	17¾	17⅞	18	18⅞	18¼	18⅜	ins.	
	40.5	41.5	42	42.5	43	44	44	44.5	45	45	45.5	46	46	46.5	47	cm.	

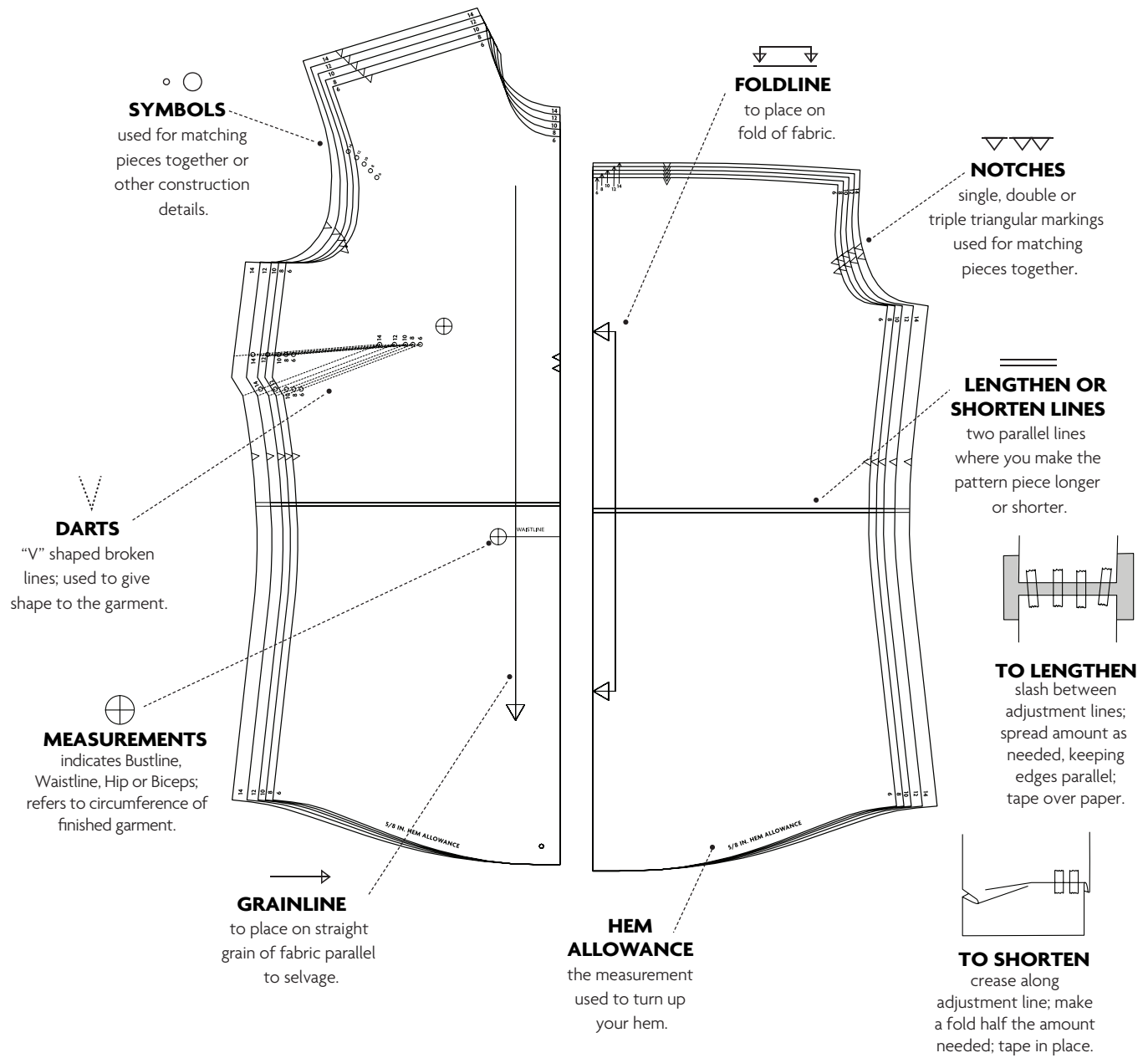
## CUTTING AND MARKING

- > **SHRINK FABRIC** if not labeled pre-shrunk. Press.
- > **CIRCLE LAYOUT** for View, Size, Fabric Width.
- > Use **WITH NAP** layout for fabrics with one-way designs, nap, pile or surface shading. Because most knits have surface shading, a with nap layout is used.
- > For **DOUBLE THICKNESS (WITH FOLD)**, fold fabric with right sides together.
- > **\*DOUBLE THICKNESS (WITHOUT FOLD)**, for fabrics with nap, fold fabric crosswise, right sides together. Mark as shown. Cut along crosswise fold of fabric (A). Turn upper layer 180° so arrows go in same direction and place over lower layer, right sides together (B).
- > For **SINGLE THICKNESS**, place fabric right side up. (For Fur Pile fabrics, place pile side down.)



- > Before **CUTTING**, place all pieces on fabric according to layout. Pin.  
(Layouts show approximate position of pattern pieces; position may vary according to your pattern size.)
  - > ★ Cut other pieces first, allowing enough fabric to cut this piece. Open fabric. Cut piece on single layer of fabric with piece face up on right side of fabric.
  - > Cut accurately, cutting notches outward.
  - > Before removing pattern, **TRANSFER MARKINGS** and lines of construction to **WRONG SIDE** of fabric, using Pin and Chalk Pencil method or Tracing Paper and Dressmaker Wheel. Markings needed on right side of fabric should be thread traced.
- NOTE:** Broken-line boxes (a! b! c!) in layouts represent pieces cut by measurements provided.
- > Prewash your fabric using a method that's suitable for the fabric type.
  - > Fold fabric with right sides together, matching **SELVAGES**.
  - > Pin your pattern pieces to the fabric as shown below and cut them out using a sharp pair of dressmaker's shears.

PATTERN MARKINGS



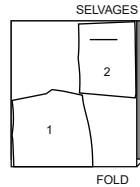
## CUTTING LAYOUTS

### MISSSES 10-18

#### LINING - A,B

USE PIECES 1 2

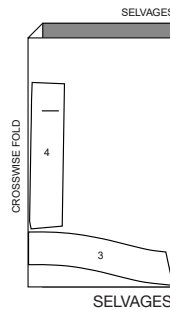
45" (115CM)  
WITHOUT NAP  
ALL SIZES



#### INTERFACING - A,B

USE PIECES 3 4

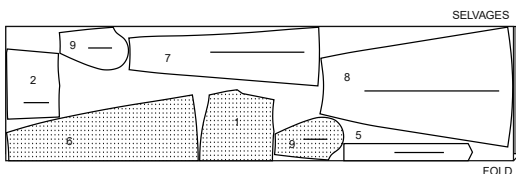
20" (51CM)  
ALL SIZES



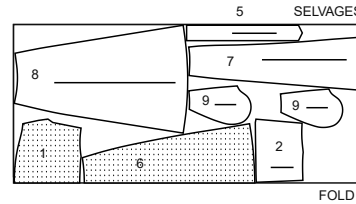
#### DRESS - A

USE PIECES 1 2 5 6 7 8 9

45" (115CM)  
WITH NAP  
ALL SIZES



60" (150CM)  
WITH NAP  
ALL SIZES

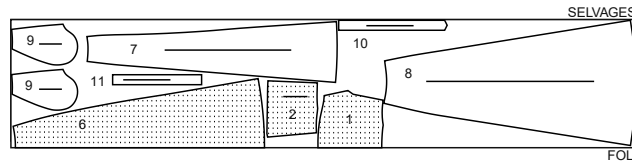


#### DRESS - B

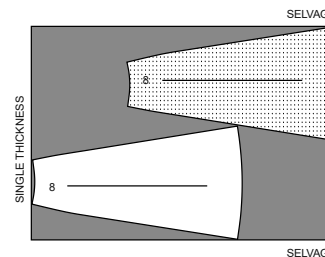
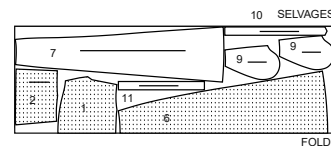
USE PIECES 1 2 6 7 8 9 10 11

USE PIECES 1 2 6 7 8 9 10 11

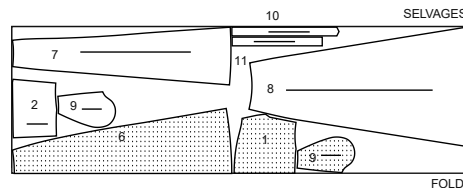
45" (115CM)  
WITH NAP  
SIZE 10



45" (115CM)  
WITH NAP  
SIZES 12 14 16 18



60" (150CM)  
WITH NAP  
ALL SIZES

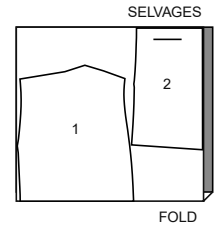


### WOMEN 20W-38W

#### LINING - A,B

USE PIECES 1 2

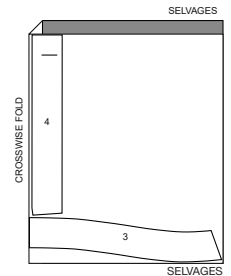
45" (115CM)  
WITHOUT NAP  
ALL SIZES



#### INTERFACING - A,B

USE PIECES 3 4

20" (51CM)  
ALL SIZES

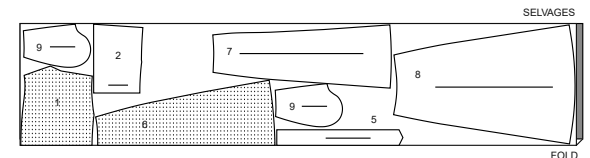


#### DRESS - A

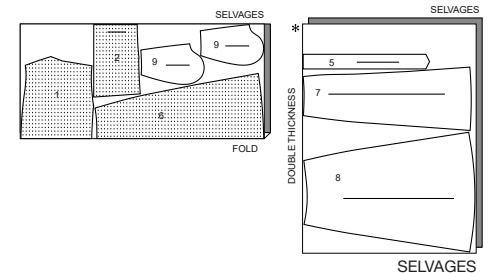
USE PIECES 1 2 5 6 7 8 9

USE PIECES 1 2 5 6 7 8 9

45" (115CM)  
WITH NAP  
SIZES 20W 22W 24W 26W

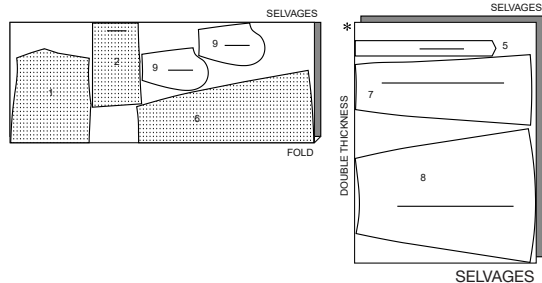


45" (115CM)  
WITH NAP  
SIZES 28W 30W 32W

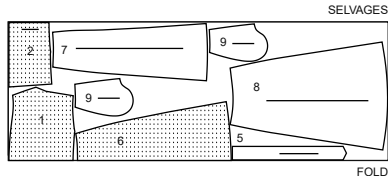


## CUTTING LAYOUTS CONTINUED

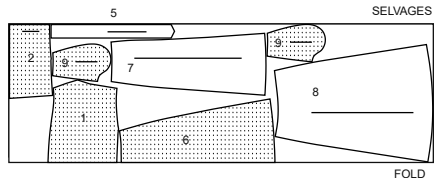
45" (115CM)  
WITH NAP  
SIZES 34W 36W 38W



60" (150CM)  
WITH NAP  
SIZES 20W 22W  
24W 26W 28W 30W



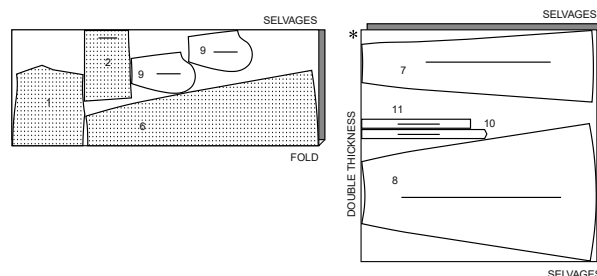
60" (150CM)  
WITH NAP  
SIZES 32W 34W  
36W 38W



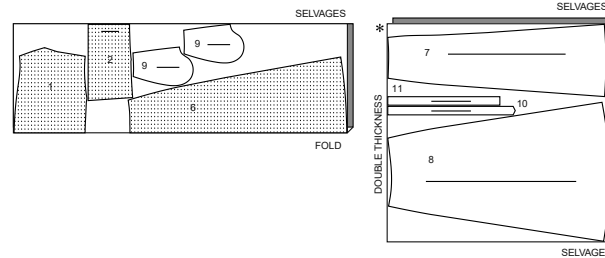
## DRESS - B

USE PIECES 1 2 6 7 8 9 10 11

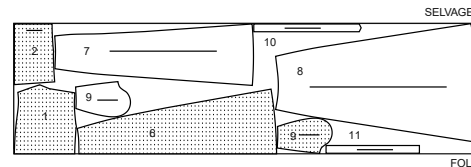
45" (115CM)  
WITH NAP  
SIZES 20W 22W 24W 26W 28W 30W



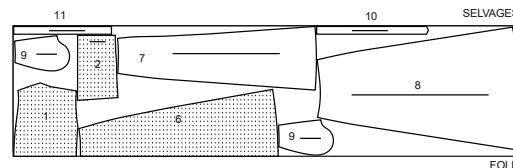
45" (115CM)  
WITH NAP  
SIZES 32W 34W 36W 38W



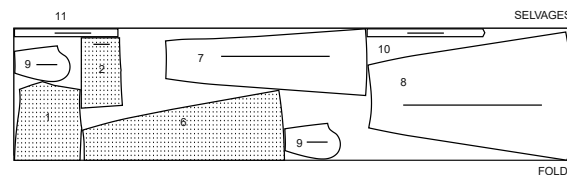
60" (150CM)  
WITH NAP  
SIZES 20W 22W 24W 26W 28W 30W



60" (150CM)  
WITH NAP  
SIZES 32W 34W



60" (150CM)  
WITH NAP  
SIZES 36W 38W



PATTERN PIECES WILL BE IDENTIFIED  
BY NUMBERS THE FIRST TIME THEY ARE  
USED.

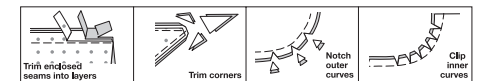
## SEWING INFORMATION

**5/8" (1.5cm) SEAM ALLOWANCES ARE INCLUDED,**  
(unless otherwise indicated)  
**ILLUSTRATION SHADING KEY**

Right Side	Wrong Side	Interfacing	Lining	Underlining

Pin or baste seams, right side together, matching notches. Fit garment before stitching major seams.

Press seam allowances flat; then open unless otherwise stated. Clip where necessary so they lie flat.



## GLOSSARY

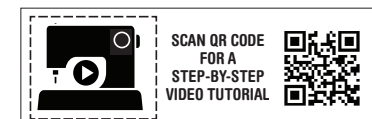
Sewing terms appearing in **BOLD TYPE** in Sewing Instructions are explained below.

**NARROW HEM** – Turn in hem; press, easing in fullness if necessary. Open out hem. Turn in again so raw edge is along crease; press. Turn in along crease; stitch close to inner pressed edge.

**REINFORCE** – Stitch along seamline where indicated in sewing instructions, using small machine stitches.

**SLIPSTITCH** – Slide needle through a folded edge, then pick up a thread of underneath fabric.

**UNDERSTITCH** – Open out facing or underside of garment; stitch to seam allowance close to seam.



@brittanyjjones



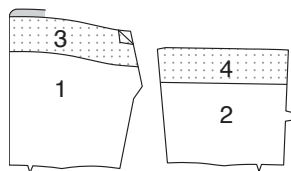
# SEWING DIRECTIONS

## DRESS A, B

**NOTE:** Under each sub-heading, the first View will be illustrated, unless otherwise indicated.

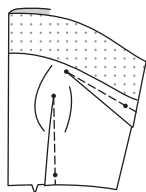
### INTERFACING

**1.** Pin FRONT INTERFACING (3) to wrong side of BODICE FRONT (1) along upper edge with raw edges even. Pin BACK INTERFACING (4) to wrong side of BODICE BACK (2) along upper edge with raw edges even. Fuse, following manufacturer's instructions.

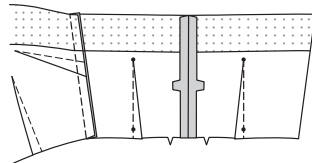


### BODICE

**2.** Make darts on side edges BODICE FRONT (1). Press darts down. Make darts on lower edge. Press toward center.

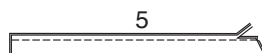


**3.** Pin center back edges of BODICE BACK (2) sections. Stitch. Make darts on lower edge of bodice back. Press toward center. Stitch bodice front to bodice back at right side edges.

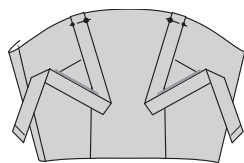


### SHOULDER STRAP A

**4.** Fold SHOULDER STRAP (5) in half lengthwise with right sides together. Stitch long edge in a 3/8" (1 cm) seam. Trim seam.

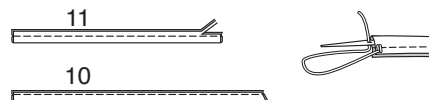


**5.** Turn strap; press. Baste raw edges together. On outside, pin strap to bodice front, matching small and large dots. Baste.

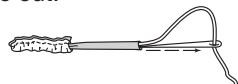


### STRAPS B

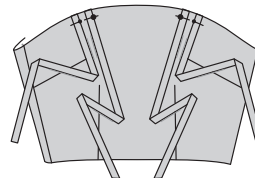
**6.** Fold STRAP (10) and SHOULDER STRAP (11) in half lengthwise with right sides together. Stitch long edge in a 3/8" (1 cm) seam. Trim seam. With a needle, attach a strong thread to one end of each strap.



**7.** Draw needle eye forward, through fold, turning shoulder strap and strap right side out.

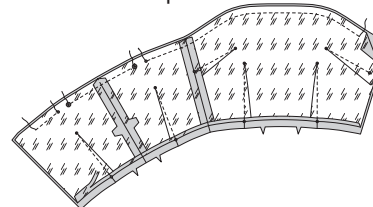


**8.** Turn straps; press. On outside, pin strap to bodice front, matching small dots, as shown, and shoulder strap to bodice front, matching large dots, as shown. Baste.



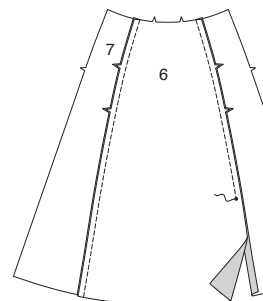
### CONTINUE AS FOLLOWS FOR ALL VIEWS

**9.** Stitch bodice lining sections together in the same manner as for bodice. Press up a 5/8" (1.5 cm) on lower edge of lining. Trim to 1/4" (6 mm). With right sides together and raw edges even, pin lining to bodice at neck edge, matching centers and seams. Stitch, beginning and ending 2" (5cm) from left side edges, and leaving an opening between the dots for back ends of straps.

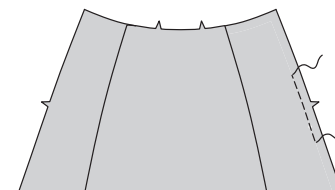


### SKIRT

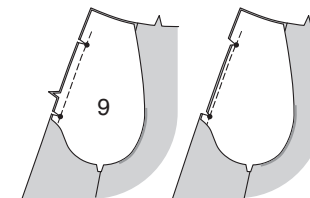
**10.** Pin SKIRT FRONT (6) to SKIRT SIDE FRONT (7) at side front edges. Stitch left side front seam. Stitch right side front seam from upper edge to the large dot, backstitching at dot to reinforce the seam.



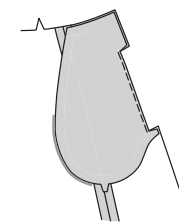
**11. REINFORCE** left side edge skirt side front for 2" (5cm) each side of the notch.



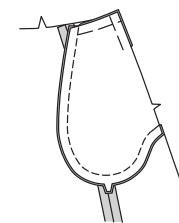
**12. REINFORCE POCKET** (9) for about 1" (2.5cm) each side of large dots, stitching through dots. With right sides together and raw edges even, pin pocket to skirt side front, matching large dots. Stitch between large dots. Clip seam allowance to dots.



**13. UNDERSTITCH** the pocket. Turn pocket to inside; press.

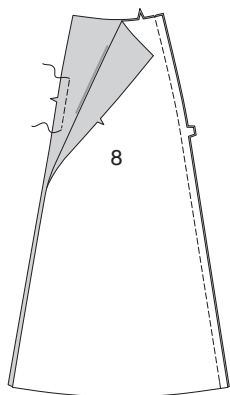


**14.** With right sides together, pin remaining pocket section to pocket, matching large dots. Stitch double notched edge. Baste raw edges together.

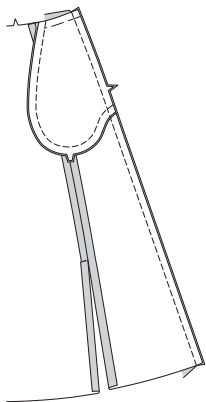




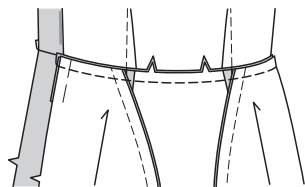
**15.** Pin center back edges of SKIRT BACK (8) sections. Stitch. **REINFORCE** left side edge skirt back for 2" (5cm) each side of the notch.



**16.** Pin skirt front to skirt back at right side edges, being careful not to catch in finished front edge of pocket. Stitch.



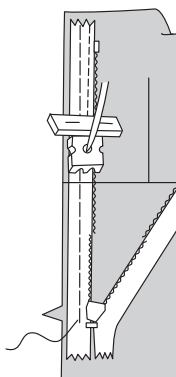
**17.** Pin upper edge of skirt to lower edge of bodice, matching centers, notches, and seams. Stitch. Press seam toward bodice.



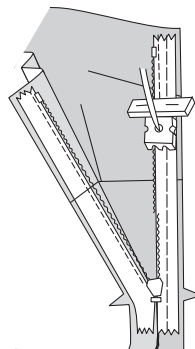
## ZIPPER

**NOTE:** Stitch the invisible zipper using an invisible zipper foot.

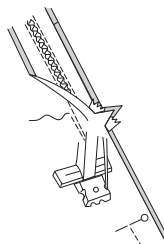
**18.** Open the zipper and press the tape flat. Keep the free upper edges of left side linings out of the way. On outside, pin right side of the zipper face down on the right side of the zipper opening. Have the coil along the seam line, the tape within the seam allowance and the top stop a generous 5/8" (1.5cm) below upper edge, as shown. Hand-baste along center of tape. Position zipper foot over coil. Stitch along tape to notch. Back-stitch to reinforce.



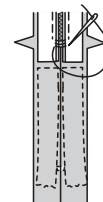
**19.** Pin the remaining half of the zipper to the left side of the zipper opening in same manner. Hand-baste along the center of tape. Position zipper foot at the top of the zipper with left groove over the coil. Stitch along tape to the notch, keeping pocket opening free. Back-stitch to reinforce.



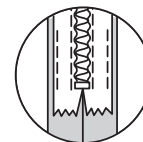
**20.** Close zipper and check that it is invisible from the outside. Pull the free ends of the zipper tape away from the seam allowance. Pin remaining left side seam together below zipper. Position zipper foot all the way to the left so the needle goes down through the outer notch of the foot. Start stitching seam 1/4" (6mm) above the lowest stitch and slightly to the left. Stitch remainder of seam.



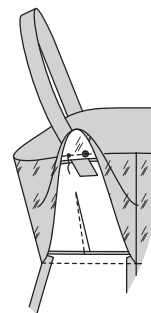
**21.** If the zipper is longer than the opening, using a strong thread, hand-sew a few small stitches across ends of coils at end of opening. Trim away lower end of zipper tape to within 5/8" (1.5cm) of hand-stitches.



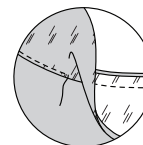
**22.** If you prefer, open out each seam allowance at end of zipper and stitch tape to seam allowance.



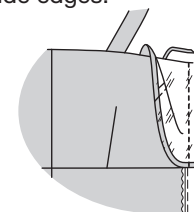
**23.** Try on dress. Insert ends of straps into corresponding back openings. Adjust to fit comfortably. Pin. On inside, stitch ends of straps to bodice and lining, connecting to previous stitching. Trim seam up to end of stitching at left side.



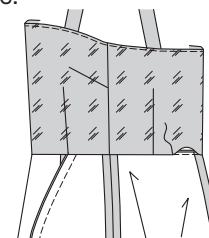
**24. UNDERSTITCH** the lining as far as possible.



**25.** Open out left side opening edges of dress, rolling the zipper teeth away from the opening edge. Turn left side linings to outside. With right sides together, pin left side and left side neck edges of dress and lining together. Stitch remaining bodice neck edges, connecting to previous stitching. Trim neck seam. Stitch across lining 1/2" (1.3cm) from left side edges, keeping zipper teeth free. Trim corner. Do not trim left side edges.



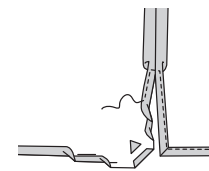
**26.** Turn lining to INSIDE, press. Pin pressed edge of lining to seam. **SLIPSTITCH** in place.



## FINISHING

**27.** Try on dress. Mark length. Press up hem along marking. Mark depth of hem; trim evenly.

**NARROW HEM** slit opening edges and lower edge of skirt.





# Congrats!

You've completed your sewing adventure

---

## SHARE YOUR LOOK



Post your pattern and tag us  
**@simplicity\_creative\_group** and **#knowmepatterns**  
for a chance to be featured on our social media.

Look for more PDF patterns at **simplicity.com**

Have a question or need help with your sewing project call us at  
1-800-782-0323



KnowMe ©2023 a division of IG Design Group Americas Inc. • Atlanta, GA 30342 USA [www.thedesigngroup.com](http://www.thedesigngroup.com) • All Rights Reserved. [www.mccall.com](http://www.mccall.com) • Made in the U.S.A. Fabriqué aux États-Unis.  
To be used for individual private home use only and not for commercial or manufacturing purposes. • À usage privé seulement et non à des fins commerciales ou de production en série. • Para uso privado solamente, no se puede utilizar con propósitos de comercialización o de producción en serie.