

@alissahthreads



>> MISSES' BABY DOLL DRESS
 WITH SLEEVE VARIATIONS
 SKILL LEVEL: AVERAGE

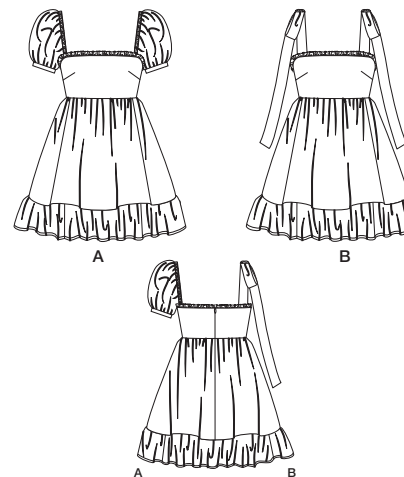


THINGS YOU NEED:

> **A,B:** 12" (30cm) invisible zipper. **Also for A:** One pkg. of ½" (1.3cm) single fold bias tape, 1 ½ yds. (1.1m) of ¾" (1cm) elastic.

SUGGESTED FABRICS:

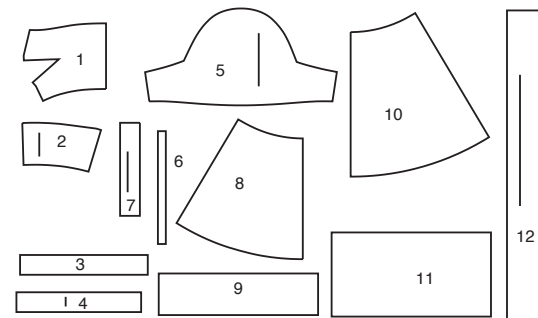
> Cotton Blends, Cotton Lawns, Gauze, Gingham, Poplin, Seersucker, Silk, Silky Types, Viscose. **Petticoat Ruffle:** Tulle. **Lining:** Cotton Blends, Polyester Blends. **Interfacing:** Lightweight Fusible.



Your printed tile pieces should be assembled before you move on to this step!

PIECES (12)

- 1 Bodice Front-A,B
- 2 Bodice Back-A,B
- 3 Front Ruffle-A,B
- 4 Back Ruffle-A,B
- 5 Sleeve-A
- 6 Elastic Guide for Sleeve-A
- 7 Sleeve Band-A
- 8 Skirt Front and Back-A,B
- 9 Lower Ruffle-A,B
- 10 Petticoat Front and Back-A,B
- 11 Petticoat Ruffle-A,B
- 12 Strap-B



YARDAGE CHART

SIZES	6	8	10	12	14	16	18	20	22	24	
TULLE A,B - 54"- 1 $\frac{3}{8}$ yds.; 140cm- 1.3m.											
LINING A,B											
45 ^{***}	2	2 $\frac{1}{8}$	2 $\frac{1}{8}$	2 $\frac{1}{8}$	2 $\frac{1}{4}$	2 $\frac{1}{4}$	2 $\frac{1}{4}$	2 $\frac{3}{8}$	2 $\frac{3}{8}$	2 $\frac{3}{8}$	yds.
115cm**	1.80	1.80	1.90	1.90	2.10	2.10	2.10	2.10	2.20	2.20	m.
DRESS A											
45 ^{**}	3 $\frac{1}{8}$	3 $\frac{1}{8}$	3 $\frac{1}{8}$	3 $\frac{1}{8}$	3 $\frac{1}{4}$	3 $\frac{1}{4}$	3 $\frac{1}{4}$	3 $\frac{1}{4}$	3 $\frac{3}{8}$	3 $\frac{3}{8}$	yds.
60 ^{**}	2 $\frac{1}{4}$	2 $\frac{1}{4}$	2 $\frac{1}{4}$	2 $\frac{1}{4}$	2 $\frac{1}{4}$	2 $\frac{1}{4}$	2 $\frac{5}{8}$	2 $\frac{5}{8}$	2 $\frac{5}{8}$	2 $\frac{5}{8}$	"
115cm*	2.90	2.90	2.90	2.90	3.00	3.00	3.00	3.00	3.10	3.10	m.
150cm*	2.10	2.10	2.10	2.10	2.10	2.10	2.40	2.40	2.40	2.40	"
INTERFACING A - 20"- $\frac{1}{2}$ yd.; 51cm- 0.5m.											
DRESS B											
45 ^{**}	2 $\frac{7}{8}$	2 $\frac{7}{8}$	3	3	3 $\frac{1}{8}$	3 $\frac{3}{4}$	3 $\frac{3}{4}$	3 $\frac{3}{4}$	3 $\frac{3}{4}$	3 $\frac{3}{4}$	yds.
60 ^{**}	2 $\frac{1}{2}$	2 $\frac{1}{2}$	2 $\frac{1}{2}$	2 $\frac{5}{8}$	2 $\frac{5}{8}$	2 $\frac{5}{8}$	2 $\frac{5}{8}$	2 $\frac{5}{8}$	2 $\frac{5}{8}$	2 $\frac{5}{8}$	"
115cm*	2.60	2.60	2.70	2.70	2.90	3.30	3.40	3.40	3.40	3.40	m.
150cm*	2.30	2.30	2.30	2.30	2.30	2.40	2.40	2.40	2.40	2.40	"

FINISHED GARMENT MEASUREMENTS

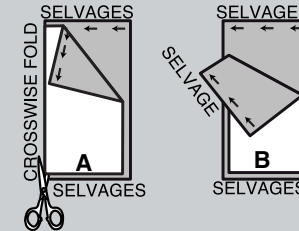
SIZES	6	8	10	12	14	16	18	20	22	24	
A,B BUST	34	35	36	37½	39½	41½	43½	45½	47½	49½	in.
	86	89	91	95	100	105	110	116	121	126	cm.
WIDTH, LOWER EDGE											
DRESS A,B (EXCL. RUFFLE)	93	94	95	96½	98½	100½	102½	104½	106½	108½	in.
	236	239	241	245	250	255	260	265	271	276	cm.
FINISHED BACK LENGTH FROM BASE OF NECK											
DRESS A,B (INCL. RUFFLE)	30½	30¾	31	31¼	31½	31¾	32	32¼	32½	32¾	in.
	77	78	79	79	80	81	81	82	83	83	cm.

BODY MEASUREMENTS

SIZES	6	8	10	12	14	16	18	20	22	24	
BUST	30½	31½	32½	34	36	38	40	42	44	46	in.
	78	80	83	87	92	97	102	107	112	117	cm.
WAIST	23	24	25	26½	28	30	32	34	37	39	in.
	58	61	64	67	71	76	81	87	94	99	cm.
HIP-9" (23CM) BELOW WAIST	32½	33½	34½	36	38	40	42	44	46	48	in.
	83	85	88	92	97	102	107	112	117	122	cm.
BACK-NECK TO WAIST	15½	15¾	16	16¼	16½	16¾	17	17¼	17½	17¾	in.
	39.5	40	40.5	41.5	42	42.5	43	44	44.5	45	cm.

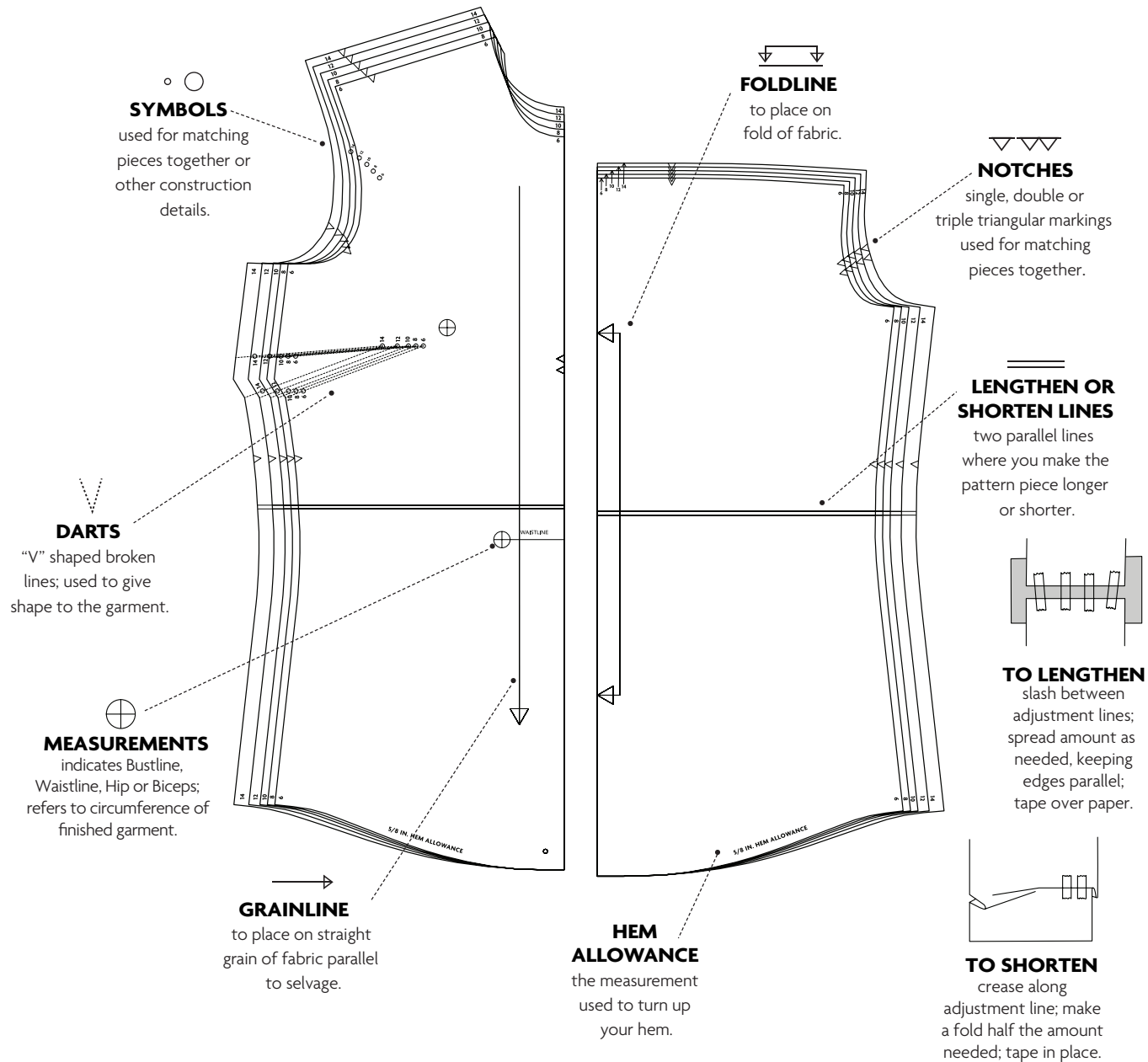
CUTTING AND MARKING

- > **SHRINK FABRIC** if not labeled pre-shrunk. Press.
- > **CIRCLE LAYOUT** for View, Size, Fabric Width.
- > Use **WITH NAP** layout for fabrics with one-way designs, nap, pile or surface shading. Because most knits have surface shading, a with nap layout is used.
- > For **DOUBLE THICKNESS (WITH FOLD)**, fold fabric with right sides together.
- > ***DOUBLE THICKNESS (WITHOUT FOLD)**, for fabrics with nap, fold fabric crosswise, right sides together. Mark as shown. Cut along crosswise fold of fabric (A). Turn upper layer 180° so arrows go in same direction and place over lower layer, right sides together (B).
- > For **SINGLE THICKNESS**, place fabric right side up. (For Fur Pile fabrics, place pile side down.)



- > Before **CUTTING**, place all pieces on fabric according to layout. Pin.
(Layouts show approximate position of pattern pieces; position may vary according to your pattern size.)
- > ★ Cut other pieces first, allowing enough fabric to cut this piece. Open fabric. Cut piece on single layer of fabric with piece face up on right side of fabric.
- > Cut accurately, cutting notches outward.
- > Before removing pattern, **TRANSFER MARKINGS** and lines of construction to **WRONG SIDE** of fabric, using Pin and Chalk Pencil method or Tracing Paper and Dressmaker Wheel. Markings needed on right side of fabric should be thread traced.
NOTE: Broken-line boxes (a! b! c!) in layouts represent pieces cut by measurements provided.
- > Prewash your fabric using a method that's suitable for the fabric type.
- > Fold fabric with right sides together, matching **SELVAGES**.
- > Pin your pattern pieces to the fabric as shown below and cut them out using a sharp pair of dressmaker's shears.

PATTERN MARKINGS

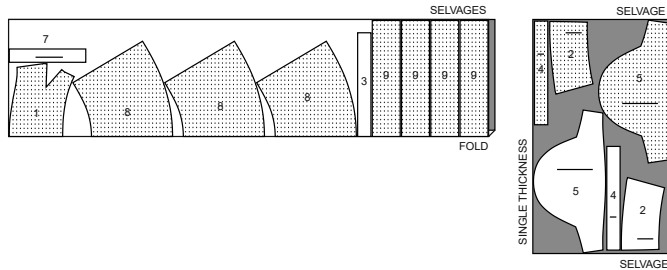


CUTTING LAYOUTS

DRESS A

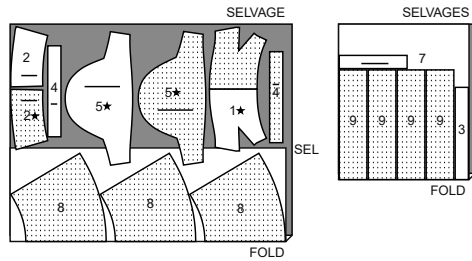
use pieces: 1 2 3 4 5 7 8 9

45" (115 cm)
with nap
all sizes



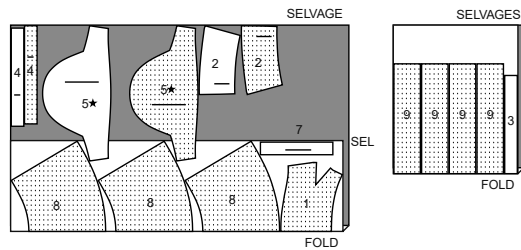
60" (150 cm)

with nap
sizes 6 8 10 12 14 16



60" (150 cm)

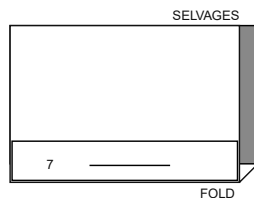
with nap
sizes 18 20 22 24



INTERFACING A

use piece: 7

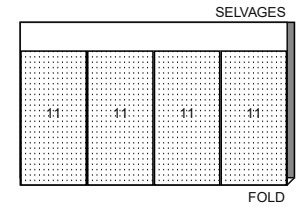
20" (51 cm)
without nap
all sizes



PETICOAT TULLE A B

use piece: 11

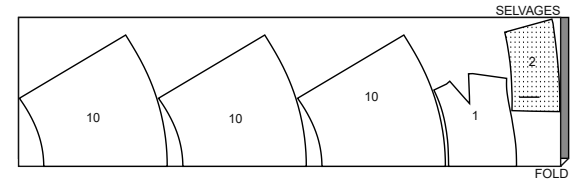
54" (138 cm)
with nap
all sizes



LINING A B

use pieces: 1 2 10

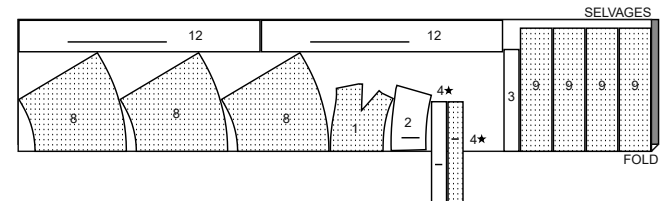
45" (115 cm)
with nap
all sizes



DRESS B

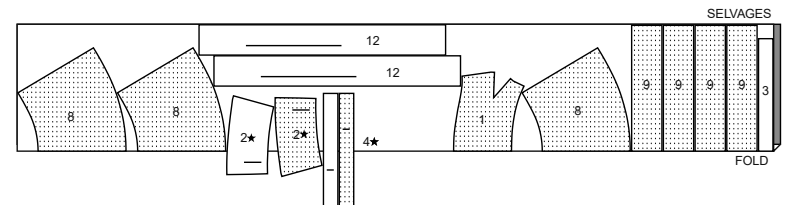
use pieces: 1 2 3 4 8 9 12

45" (115 cm)
with nap
sizes 6 8 10 12 14



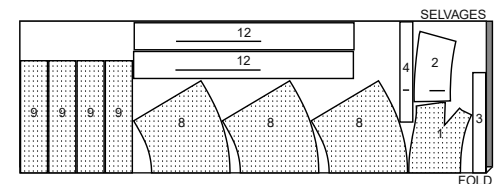
45" (115 cm)

with nap
sizes 16 18 20 22 24



60" (150 cm)

with nap
all sizes



PATTERN PIECES WILL BE IDENTIFIED BY NUMBERS THE FIRST TIME THEY ARE USED.

SEWING INFORMATION

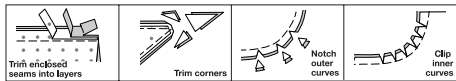
5/8" (1.5cm) SEAM ALLOWANCES ARE INCLUDED,
(unless otherwise indicated)

ILLUSTRATION SHADING KEY

Right Side	Wrong Side	Interfacing	Lining	Underlining

Pin or baste seams, right side together, matching notches. Fit garment before stitching major seams.

Press seam allowances flat; then open unless otherwise stated. Clip where necessary so they lie flat.



GLOSSARY

Sewing methods in **BOLD TYPE** have Sewing Tutorial Video available. Scan **QR CODE** to watch videos:

EDGESTITCH - Stitch close to finished edge or seam.

GATHER - Stitch along seamline and again 1/4" (6mm) away. In seam allowance, using long machine stitches. Pull thread ends when adjusting to fit.

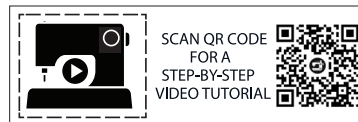
NARROW HEM - Turn in hem; press, easing in fullness if necessary. Open out hem. Turn in again so raw edge is along crease; press. Turn in along crease; stitch.

REINFORCE - Stitch along seamline where indicated in sewing instructions, using small machine stitches.

TOPSTITCH - On outside, stitch 1/4" (6mm) from edge, seam or previous stitching, using presser foot as guide, or stitch where indicated in instructions.

UNDERSTITCH - Open out facing or underside of garment; stitch to seam allowance close to seam.

SLIPSTITCH - Slide needle through a folded edge, then pick up a thread of underneath fabric.



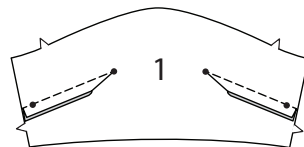
@alissahthreads

SEWING DIRECTIONS

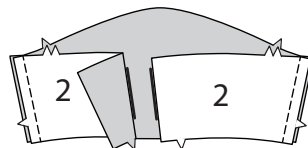
DRESS A, B

BODICE FRONT AND BACK

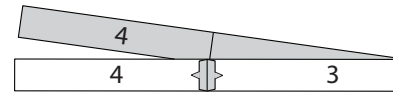
1. Stitch dart seam in **BODICE FRONT** (1). Press dart down.



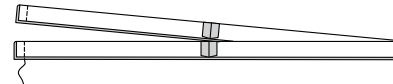
2. With right sides together, stitch bodice front to **BODICE BACK** (2) at side seams.



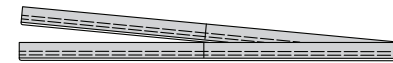
3. Stitch **FRONT RUFFLE** (3) to **BACK RUFFLE** (4) at sides.



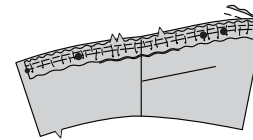
4. Fold ruffle in half lengthwise with right sides together. Stitch ends.



5. Turn ruffle right side out. Press. **GATHER** raw edge of ruffle.

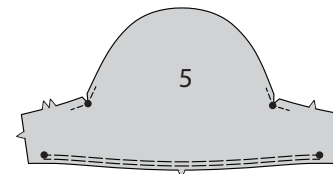


6. On outside, pin ruffle to upper edge of bodice matching small dots and side seams. Adjust gathers. Baste. Transfer markings from bodice to ruffle.

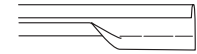


SLEEVE A

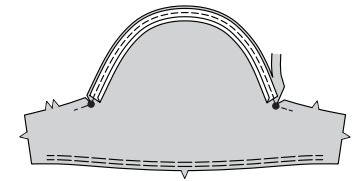
7. REINFORCE SLEEVE (5) at large dots. Clip to large dots. **GATHER** lower edge of sleeve between large dots.



8. Open out one folded edge of bias tape; press lightly.

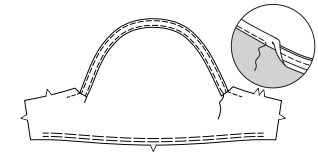


9. Pin tape to upper edge of sleeve, placing crease 5/8" (1.5cm) from raw edge. Stitch along crease. Trim garment even with bias tape.



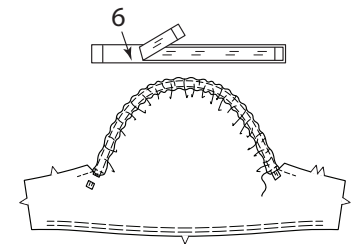
10. UNDERSTITCH tape.

Turn bias to inside along seam. Press. To form casing, stitch close to lower long edge.

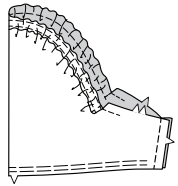


11. Cut elastic measurement of **ELASTIC GUIDE FOR SLEEVE** (6).

Insert elastic through opening in casing, having ends extend 5/8" (1.5cm) beyond large dots. Baste ends. Try on garment and adjust if necessary. Stitch across ends of elastic. Trim away ends of elastic, as shown.



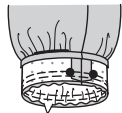
12. With right sides together, stitch sleeve seam.



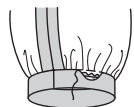
13. Fuse INTERFACING to wrong side of each matching SLEEVE BAND (7) section, following manufacturer's instructions. Stich ends of sleeve band together. Turn in 5/8" (1.5cm) on unnotched edge of sleeve band. Press. Trim pressed seam allowance to 3/8" (1cm).



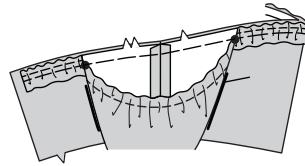
14. Pin sleeve band to sleeve, matching notches, seams and large dots. Adjust gathers. Baste. Stitch. Trim seam allowances.



15. Turn sleeve band to inside, SLIPSTITCH pressed edge over seam.

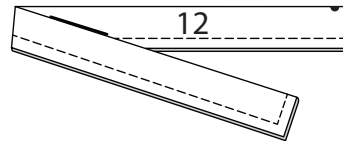


16. On outside, pin sleeve to armhole edge matching large dots, having raw edges even. Baste.

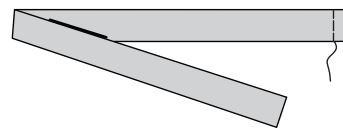


STRAPS B

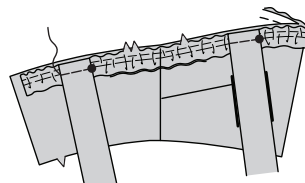
17. Construct four straps as follows: Fold STRAP (12) in half lengthwise with right sides together. Stitch along outer edge leaving end with large dots open. Trim.



18. Turn strap right side out. Press. Baste raw edges together.

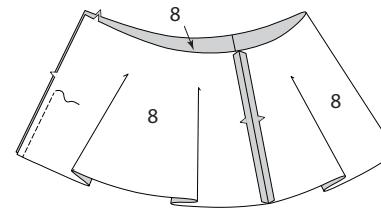


19. On outside, pin straps to upper edge of bodice front and back, matching large dots, as shown. Baste.

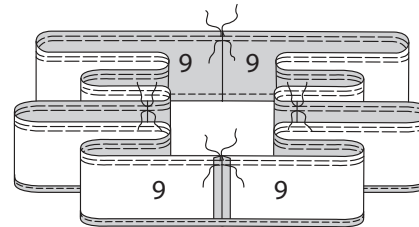


SKIRT FRONT AND BACK AND LINING

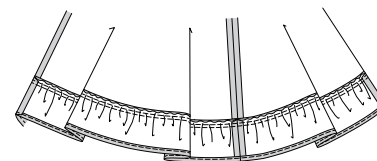
20. With right sides together, stitch seams in SKIRT FRONT AND BACK (8) sections, stitching center back seam from lower edge to within 2" (5cm) of notch. Back-stitch to reinforce seam.



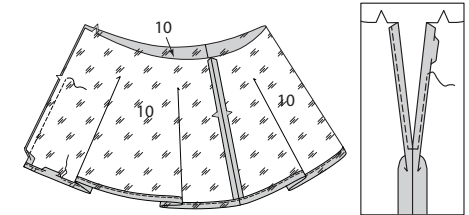
21. Stitch ends of LOWER RUFFLE (9) sections. **GATHER** upper edge of ruffle breaking stitching at seams. **NARROW HEM** lower edge of ruffle.



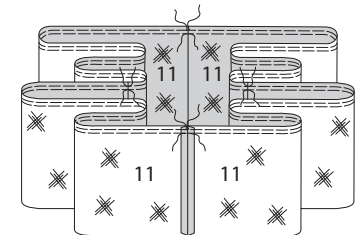
22. With right sides together, pin ruffle to lower edge of dress matching seams and centers. Adjust gathers. Baste. Stitch. Press seam up.



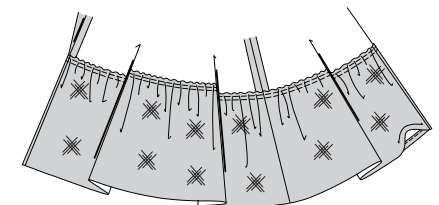
23. Stitch seams in PETTICOAT FRONT AND BACK (10) sections, stitching center back seam from lower edge to notch. **NARROW HEM** lower and back opening edges edge of petticoat.



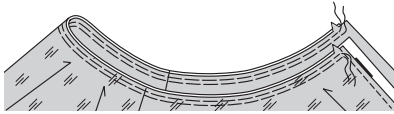
24. Stitch ends of PETTICOAT RUFFLE (11) sections. **GATHER** upper edge of ruffle breaking stitching at seams.



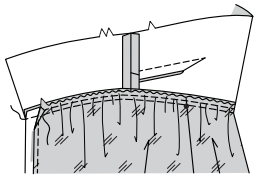
25. With wrong sides together, pin ruffle to lining placing seam along stitching line, matching seams and centers. Adjust gathers. Baste. Stitch along stitching line.



26. With wrong sides together, pin petticoat to skirt at upper edge matching notches, having raw edges even. Baste between notches leaving hem edge free. **GATHER** upper edge of skirt and lining between notches on back.



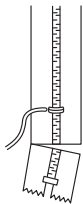
27. With right sides together, pin skirt to lower edge of bodice, matching notches, center back, and seams to small dots on front. Adjust gathers. Baste. Stitch through all thicknesses ending at notch. Stitch remaining seam allowances together at center back. Press seam up.



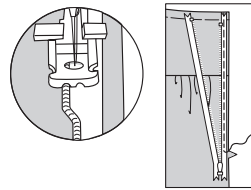
ZIPPER

NOTE: Use special invisible zipper foot when stitching invisible zipper.

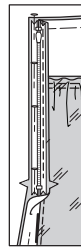
28. NOTE: It may be necessary to shorten zipper. To make new zipper stop, place zipper along opening edge (with pull tab 3/8" (1cm) below seamline). Mark placement of new zipper stop. Whipstitch across teeth at marking. Cut zipper 3/4" (2cm) below the new stop.



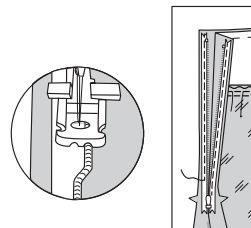
29. Open zipper. On outside, pin zipper to left opening edge, face down in seam allowance, placing zipper tape 1/4" (6mm) down from upper edge of fabric and zipper teeth on seamline. Position left-hand groove of zipper foot over teeth; stitch close to teeth, ending at notch, keeping lining free.



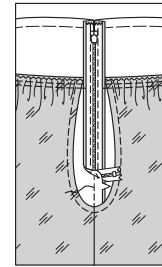
30. Close zipper. Pin remaining zipper tape to right back opening edge, placing zipper teeth on seamline.



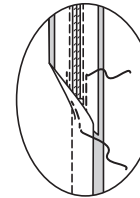
31. Open zipper. Position right-hand groove of zipper foot over teeth; stitch to notch.



32. Close zipper. Slide zipper foot to the left. Pin back sections together below zipper. Position and lower needle slightly above and to the left of zipper stitching at notch. Stitch center back seam below notch connecting with previous stitching.



33. Stitch or hand sew each end of zipper tape to seam allowances, keeping back free when stitching.

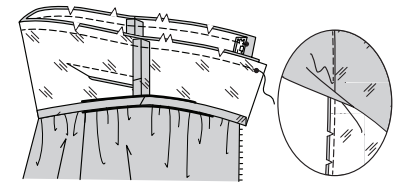


BODICE LINING

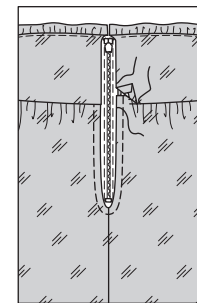
34. Make dart seam in bodice front Lining In same manner as for bodice. With right sides together, stitch bodice front to back at side seams.



35. Press under 5/8" (1.5cm) on lower edge of lining. With right sides together, pin lining to upper edge of dress, matching seams. Baste neck edge, clipping lining where necessary. Stitch. Trim. **UNDERSTITCH** lining.



36. Turn down lining, turning in back opening edges to clear zipper teeth; press. **SLIPSTITCH** back edges to zipper tape and pressed edge over waist seam. If you prefer, slip-stitch free ends of lining to zipper tape.





Congrats!

You've completed your sewing adventure

**SHARE
YOUR** LOOK



Post your pattern and tag us
@simplicity_creative_group and **#knowmepatterns**
for a chance to be featured on our social media.

Look for more PDF patterns at **simplicity.com**

Have a question or need help with your sewing project call us at
1-800-782-0323

know**ME**
by **design**