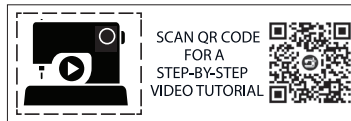


ME2035



@norrisdantaford



>> MEN'S POLO SHIRT AND PANTS
 SKILL LEVEL: AVERAGE

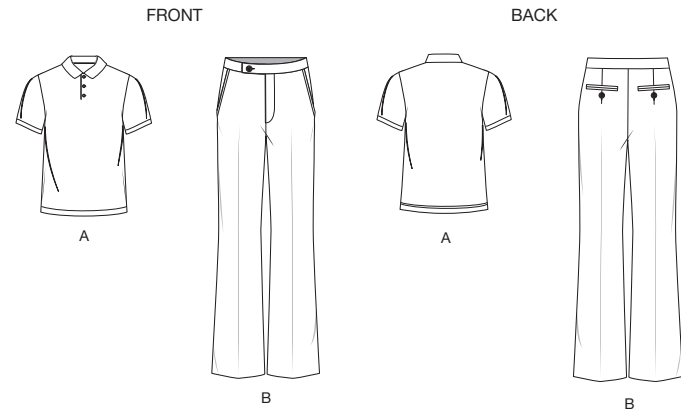
 PDF PATTERNS

THINGS YOU NEED:

> **A:** Three 1/2" (1.3cm) buttons, 1 1/4 yds. (1.1m) of 3/8" (1cm) twill tape, one pkg. of seam binding. **B:** 7" (18cm) zipper, three 5/8" (1.5cm) buttons.

SUGGESTED FABRICS:

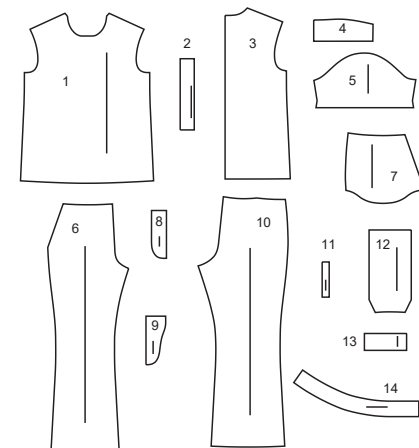
> **A** in Stretch Knits only such as Bamboo, ITY, Jersey, Single Knit. See Stretch Gauge. **B:** Cotton Blends, Gabardine, Lightweight Wool Blends, Linen Blends, Satin, Stretch Wovens. **Lining:** Cotton Blends, Polyester. **Interfacing:** Lightweight Fusible.



Your printed tile pieces should be assembled before you move on to this step!

PIECES (14)

- 1 FRONT - A
- 2 CONTINUOUS LAP - A
- 3 BACK - A
- 4 COLLAR - A
- 5 SLEEVE - A
- 6 FRONT - B
- 7 POCKET - B
- 8 FLY FACING - B
- 9 FLY - B
- 10 BACK - B
- 11 WELT - B
- 12 BACK POCKET - B
- 13 BACK POCKET FACING - B
- 14 WAISTBAND - B



STRETCH GAUGE - MEASURING FABRIC STRETCH

Whenever you see a minimum stretch requirement on one of the sewing patterns, it is important that you measure the fabric stretch in both length and width!



YARDAGE CHART

SIZES	34	36	38	40	42	44	46	48	50	52	
TOP A											
60"*	1¼	1¼	1¼	1¼	1¾	1¾	1½	1½	1½	1½	yds.
150cm*	1.2	1.2	1.2	1.2	1.3	1.3	1.4	1.4	1.4	1.4	m.
INTERFACING											
20"	¾	¾	¾	¾	¾	¾	¾	¾	¾	7/8	yds.
51cm	0.6	0.7	0.7	0.7	0.7	0.7	0.7	0.7	0.7	0.8	m.
PANTS B (WORN 1" (2.5CM) BELOW WAIST)											
45"*	2¾	2½	2½	2½	2½	3	3	3½	3¼	3¼	yds.
60"*	1⅞	2	2	2	2¼	2¼	2¾	2¾	2½	2¾	"
115cm*	2.2	2.4	2.4	2.4	2.4	2.8	2.8	2.9	3.0	3.0	m.
150cm*	1.8	1.8	1.9	1.9	2.1	2.1	2.2	2.2	2.4	2.4	"
LINING- 45"*** (115cm**)- ½yd. (0.5m)											
INTERFACING											
20"	1¼	1¼	1¾	1¾	1½	1½	1½	1⅝	1⅝	1¾	yds.
51cm	1.2	1.2	1.3	1.3	1.3	1.4	1.4	1.5	1.5	1.5	m.

FINISHED GARMENT MEASUREMENTS

SIZES	34	36	38	40	42	44	46	48	50	52	
A CHEST	35	37	39	41	43	45	47	49	51	53	ins.
	89	94	99	104	109	114	119	124	130	135	cm.
A WAIST	36	38	40	42	44	46	48	50	52	54	ins.
	91	97	102	107	112	117	122	127	132	137	cm.
B WAIST	29¼	31¼	33¼	35¼	37¼	39¼	41¼	43¼	45¼	47¼	ins.
	74	79	84	90	95	100	105	110	115	120	cm.

FINISHED GARMENT MEASUREMENTS (CONTINUED)

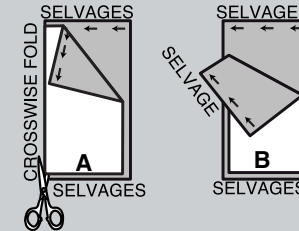
SIZES	34	36	38	40	42	44	46	48	50	52	
A HIP	38	40	42	44	46	48	50	52	54	56	ins.
	97	102	107	112	117	122	127	132	137	142	cm.
B HIP	37	39	41	43	45	47	49	51	53	55	ins.
	94	99	104	109	114	119	124	130	135	140	cm.
WIDTH, EACH LEG											
PANTS B	21	21½	22	22½	23	23½	24	24½	25	25½	ins.
	53	55	56	57	58	60	61	62	64	65	cm.
WIDTH, LOWER EDGE											
TOP A	38	40	42	44	46	48	50	52	54	56	ins.
	97	102	107	112	117	122	127	132	137	142	cm.
FINISHED BACK LENGTH FROM BASE OF NECK											
TOP A	26¾	27	27¼	27½	27¾	28	28¼	28½	28¾	29	ins.
	68	69	69	70	70	71	72	72	73	74	cm.
FINISHED SIDE LENGTH FROM WAIST											
PANTS B	42¾	43	43¼	43½	43¾	44	44¼	44½	44¾	45	ins.
	109	109	110	110	111	112	112	113	114	114	cm.

BODY MEASUREMENTS

SIZES	34	36	38	40	42	44	46	48	50	52	
CHEST	34	36	38	40	42	44	46	48	50	52	ins.
	87	92	97	102	107	112	117	122	127	132	cm.
WAIST	28	30	32	34	36	39	42	44	46	48	ins.
	71	76	82	87	92	99	107	112	117	122	cm.
HIP	35	37	39	41	43	45	47	49	51	53	ins.
	89	94	99	104	109	115	119	124	128	135	cm.

CUTTING AND MARKING

- > **SHRINK FABRIC** if not labeled pre-shrunk. Press.
- > **CIRCLE LAYOUT** for View, Size, Fabric Width.
- > Use **WITH NAP** layout for fabrics with one-way designs, nap, pile or surface shading. Because most knits have surface shading, a with nap layout is used.
- > For **DOUBLE THICKNESS (WITH FOLD)**, fold fabric with right sides together.
- > ***DOUBLE THICKNESS (WITHOUT FOLD)**, for fabrics with nap, fold fabric crosswise, right sides together. Mark as shown. Cut along crosswise fold of fabric (A). Turn upper layer 180° so arrows go in same direction and place over lower layer, right sides together (B).
- > For **SINGLE THICKNESS**, place fabric right side up. (For Fur Pile fabrics, place pile side down.)



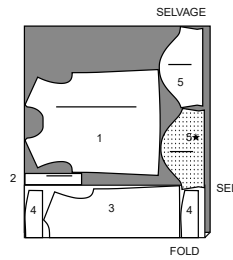
- > Before **CUTTING**, place all pieces on fabric according to layout. Pin.
(Layouts show approximate position of pattern pieces; position may vary according to your pattern size.)
- > ★ Cut other pieces first, allowing enough fabric to cut this piece. Open fabric. Cut piece on single layer of fabric with piece face up on right side of fabric.
- > Cut accurately, cutting notches outward.
- > Before removing pattern, **TRANSFER MARKINGS** and lines of construction to **WRONG SIDE** of fabric, using Pin and Chalk Pencil method or Tracing Paper and Dressmaker Wheel. Markings needed on right side of fabric should be thread traced.
NOTE: Broken-line boxes (a! b! c!) in layouts represent pieces cut by measurements provided.
- > Prewash your fabric using a method that's suitable for the fabric type.
- > Fold fabric with right sides together, matching **SELVAGES**.
- > Pin your pattern pieces to the fabric as shown below and cut them out using a sharp pair of dressmaker's shears.

CUTTING LAYOUTS

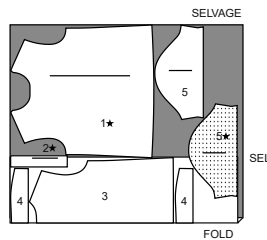
POLO SHIRT A (SIZED FOR STRETCH KNITS ONLY)

use pieces: 1 2 3 4 5

60" (150 cm)
with nap
sizes 34 36 38 40



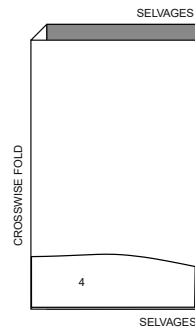
60" (150 cm)
with nap
sizes 42 44 46 48 50 52



INTERFACING A

use piece: 4

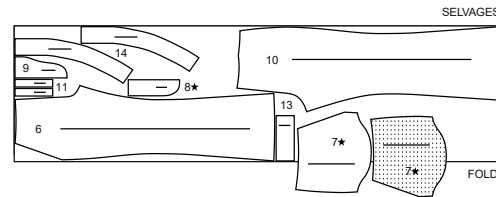
20" (51 cm)
all sizes



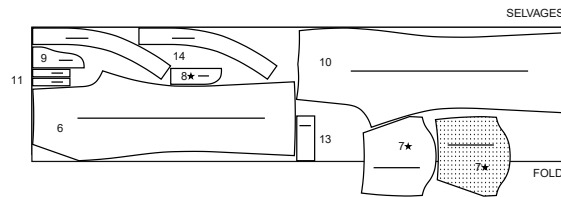
PANTS B (WORN 1" (2.5CM) BELOW WAIST)

use pieces: 6 7 8 9 10 11 13 14
cut one of piece 8

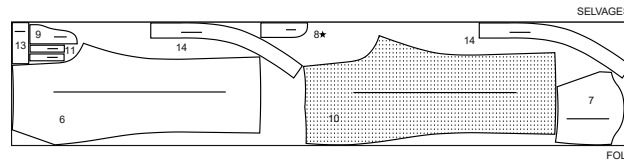
45" (115 cm)
with nap
size 34



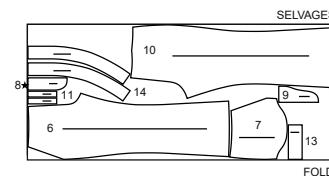
45" (115 cm)
with nap
sizes 36 38 40 42



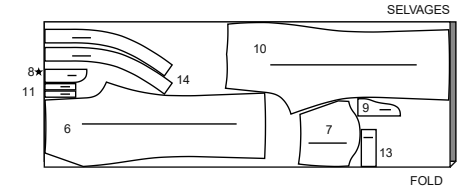
45" (115 cm)
with nap
sizes 44 46 48 50 52



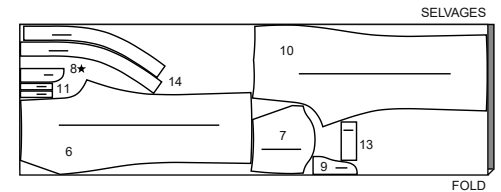
60" (150 cm)
with nap
sizes 34 36 38 40



60" (150 cm)
with nap
sizes 42 44 46 48



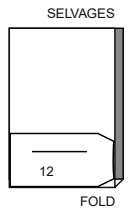
60" (150 cm)
with nap
sizes 50 52



LINING B

use piece: 12

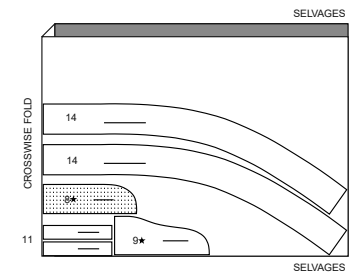
45" (115 cm)
without nap
all sizes



INTERFACING B

use pieces: 8 9 11 14
cut one of pieces 8 9

20" (51 cm)
all sizes



PATTERN PIECES WILL BE IDENTIFIED BY NUMBERS THE FIRST TIME THEY ARE USED.

SEWING INFORMATION

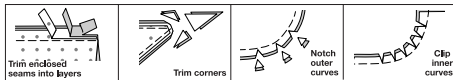
5/8" (1.5cm) SEAM ALLOWANCES ARE INCLUDED,
(unless otherwise indicated)

ILLUSTRATION SHADING KEY

Right Side	Wrong Side	Interfacing	Lining	Underlining

Pin or baste seams, right side together, matching notches. Fit garment before stitching major seams.

Press seam allowances flat; then open unless otherwise stated. Clip where necessary so they lie flat.



GLOSSARY

Sewing terms appearing in **BOLD TYPE** in Sewing Instructions are explained below.

DOUBLE - STITCH - Stitch seam along seamline; stitch again 1/4" (6mm) away in seam allowance using a straight stitch OR zigzag stitch; trim close to second stitching OR overlock seam.

EDGESTITCH - Stitch close to finished edge or seam.

FINISH - Stitch 1/4" (6mm) from raw edge and finish with one of the following: (1) Pink OR (2) Overcast OR (3) Turn in along stitching and stitch close to fold OR (4) Overlock.

OPTIONAL FOR HEMS: Apply Seam Binding.

REINFORCE - Stitch along seamline where indicated in sewing instructions, using small machine stitches.

SLIPSTITCH - Slide needle through a folded edge, then pick up a thread of underneath fabric.

STAYSTITCH - Stitch 1/8" (3mm) from seamline in seam allowance (usually 1/2" (1.3cm) from raw edge).

TOPSTITCH - On outside, stitch 1/4" (6mm) from edge, seam or previous stitching, using presser foot as guide, or stitch where indicated in instructions.

UNDERSTITCH - Open out facing or underside of garment; stitch to seam allowance close to seam.



@norrisdantaford

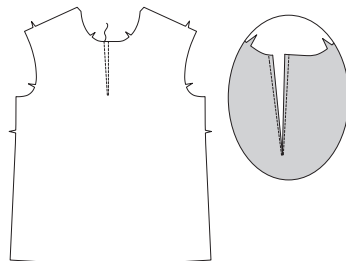
SEWING DIRECTIONS

POLO SHIRT A

NOTE: Stretch fabric evenly in front and back of needle while stitching.

FRONT AND BACK

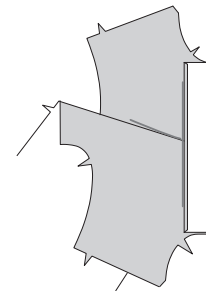
1. REINFORCE FRONT (1) along stitching line. Slash between stitching to lower end.



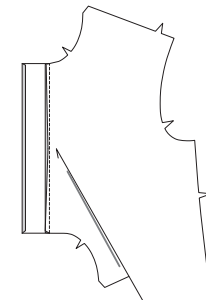
2. Turn in 1/4" (6mm) seam allowance on long edge of **CONTINUOUS LAP (2)** without stitching line. Press.



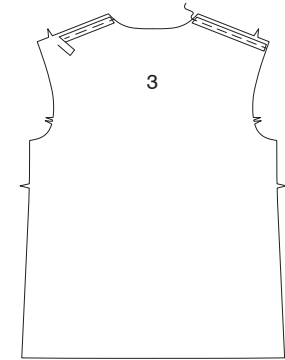
3. With right sides together, pin continuous lap to front, matching small dots and stitching lines. Stitch along stitching line.



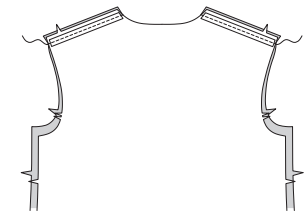
4. Press seam toward continuous lap.



5. To stay shoulder edges of **BACK (3)**, on inside center seam binding over seamline, as shown. Baste.

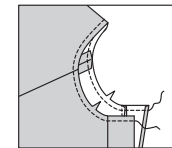


6. Stitch back to front at shoulders.

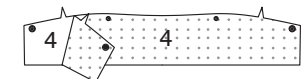


COLLAR

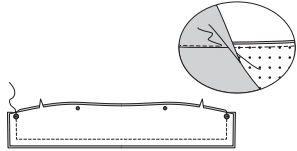
7. STAYSTITCH neck edge.



8. Pin **INTERFACING (4)** to wrong side of **COLLAR (4)**. Fuse, following manufacturer's instructions.



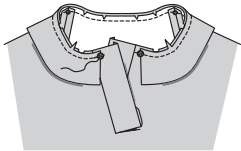
9. Stitch collar sections together, leaving notched edge open. Trim. For facing, **UNDERSTITCH** interfaced collar.



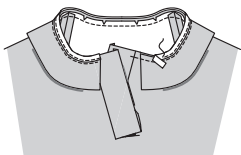
10. Turn. Press. Baste raw edges.



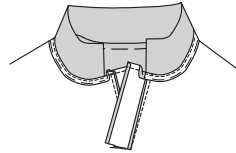
11. Pin collar to neck edge, facing side down, matching centers and placing small dots at shoulder seams, clipping neck edge where necessary. Baste. Stitch in a 3/8" (1cm) seam.



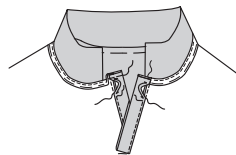
12. Pin twill tape to seam allowances between right continuous lap seam and left collar edge, as shown, placing one long edge along stitching. Stitch close to long edge, being careful not to catch shirt in stitching. Trim seam allowances close to stitching.



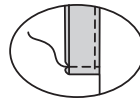
13. Press seam down, pressing in remainder of seam allowances on upper right edge of continuous lap, as shown. Baste twill tape to neck edge close to lower long edge.



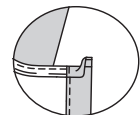
14. Turn in continuous lap along lengthwise foldline, as shown. Press. **SLIPSTITCH** upper right edges together and inner pressed edge over seam. **EDGESTITCH** inner edge. Baste upper left edges.



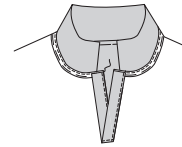
15. With right sides together, fold continuous lap along remaining foldline. Stitch close to folded edge.



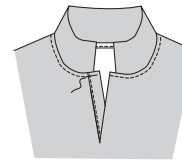
16. Turn in remainder of seam allowances on upper left edges, continuing across continuous lap. Press.



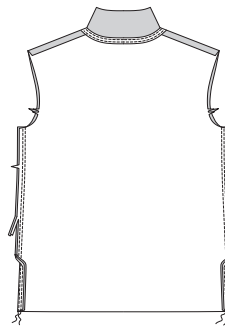
17. Turn left continuous lap to inside along seam. **SLIPSTITCH** pressed edges together, as shown.



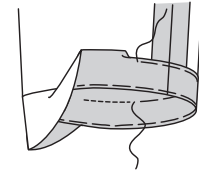
18. **TOPSTITCH** neck edge along basting, continuing to front opening edges, as shown.



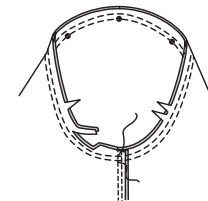
19. Stitch front to back at sides in **DOUBLE-STITCHED** seams. Press seams toward back.



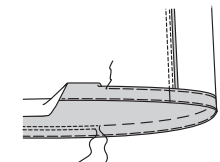
21. Turn up sleeve hem. Baste close to fold. Turn in 1/4" (6mm) on raw edge. Baste hem in place close to upper edge. Press. **TOPSTITCH** hem along upper basting.



22. With right sides together, pin sleeve into armhole, placing center small dot at shoulder seam. Stitch. Stitch again 1/4" (6mm) away in seam allowance. Trim close to stitching. Press seam allowances flat. Turn seam toward sleeve.

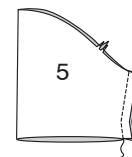


23. Turn up shirt hem. Baste close to fold. Turn in 1/4" (6mm) on raw edge. Baste hem in place close to upper edge. Press. **TOPSTITCH** hem along upper basting. **TOPSTITCH** again 1/4" (6mm) below previous stitching, as shown.

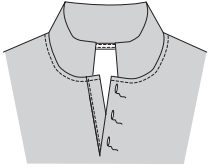


SLEEVE AND FINISHING

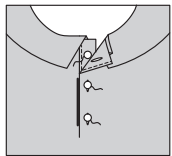
20. Stitch SLEEVE (5) seam.



24. Make buttonholes in left front at markings, through all thicknesses.



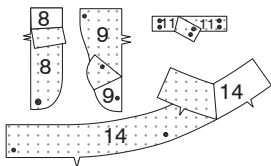
25. Lap opening edges, as shown, matching centers. Using buttonholes as guides, make button markings on right front. Sew buttons at markings.



PANTS B

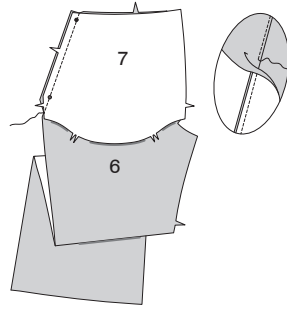
INTERFACING

1. Pin Interfacing to wrong side of each matching fabric section. Fuse, following manufacturer's instructions.

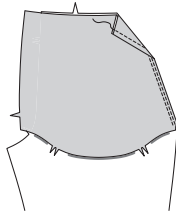


FRONT

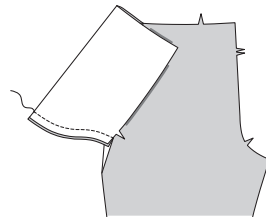
2. With right sides together, pin POCKET (7) to upper side edge of FRONT (6), matching notches. Stitch. Trim. **UNDERSTITCH** pocket.



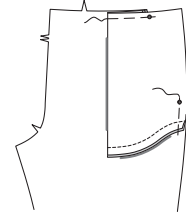
3. Turn pocket to inside. Press. **TOPSTITCH** pocket seam.



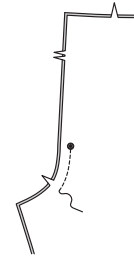
4. Open out pocket. With right sides together, fold pocket along foldline. Press. Stitch lower edges together.



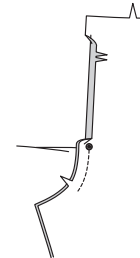
5. Turn in pocket. Baste upper and side edges.



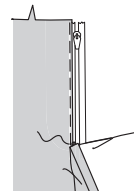
6. Construct fly front as follows:
A-Stitch front sections together at center front between large dot and notch.



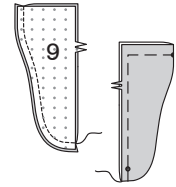
B-Turn in right front opening edge along foldline; press.



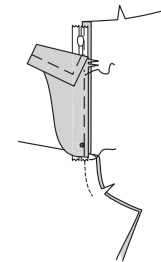
C-Place closed zipper (face up) under right front opening edge, having pressed edge close to zipper teeth and zipper stop at small dot. Using a zipper foot, baste close to pressed edge.



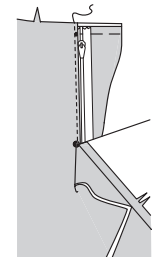
D-Stitch FLY (9) sections together in a 3/8" (1cm) seam, along outer unnotched edge, as shown. Trim. Turn. Press. Baste raw edges.



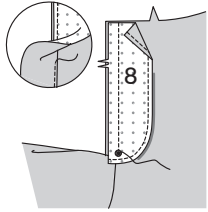
E-On inside, pin right fly to right front opening edge (over zipper), matching notches and small dots, having raw edges even. Baste along previous basting for zipper.



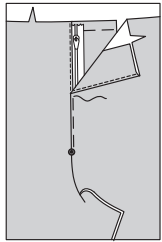
F-On outside, using a zipper foot, stitch close to pressed edge of front through all layers.



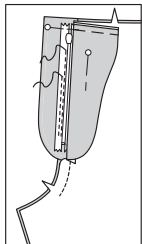
G-FINISH outer edge of left FLY FACING (8).
 Pin fly facing to left front opening edge, matching notches, and large dots. Stitch, ending at large dot. Trim.
UNDERSTITCH fly facing. Turn facing to inside.



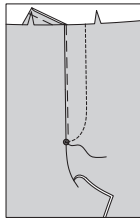
H-Lap left front over right, matching centers. Baste close to edge through all thicknesses.



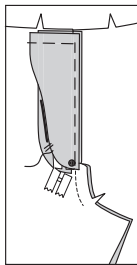
I-Pin right fly out of the way. Open out fly facing. Pin remaining zipper tape to fly facing, keeping left front free. Using a zipper foot, stitch in place close to zipper teeth and along center of zipper tape.



J-Turn facing down. On outside, stitch left front along stitching line, keeping right fly free.



K-Turn right fly back in place. On inside, hand tack fly and facing together at lower edge, as shown. Trim away excess zipper tape even with lower edge of fly, if needed.

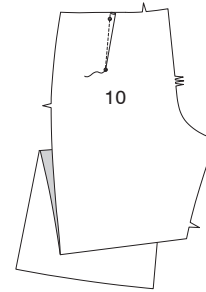


L-If desired, on outside, machine-stitch a bar tack across lower end of fly through all thicknesses.

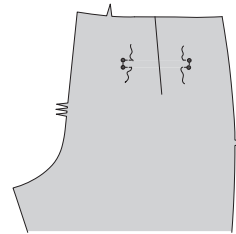


BACK

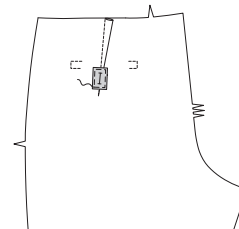
7. Stitch dart in BACK (10). Press toward center.



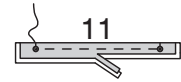
8. REINFORCE inner corners of back along stitching lines, pivoting at small dots, as shown.



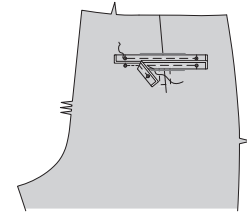
9. To **REINFORCE** buttonhole in back section, cut a 1" x 1/2" (2.5cm x 1.3cm) remnant of lining fabric. On wrong side, center remnant over buttonhole marking, as shown. Baste in place.



10. With wrong sides together, fold each WELT (11) section in half lengthwise. Baste raw edges together. Trim seam allowance on long edge to a scant 1/4" (6mm).



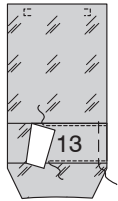
11. Pin welt sections to back, placing seamlines along stitching lines, matching symbols. Baste.



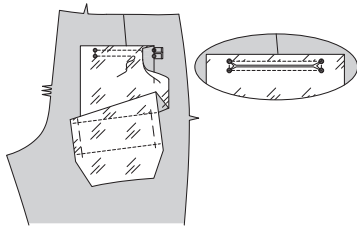
12. REINFORCE inner corners of BACK POCKET (12) along stitching lines, pivoting at small dots, as shown.



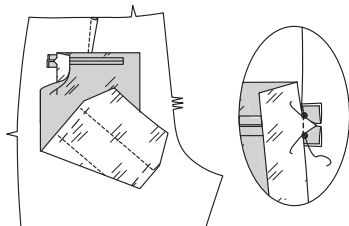
13. With right sides up, pin BACK POCKET FACING (13) to back pocket, placing upper and lower edges along placement lines, having side edges even. **EDGESTITCH** upper and lower edges. Baste raw edges together.



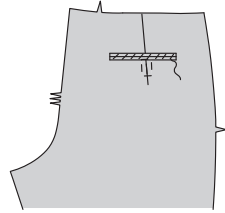
14. With right sides together, pin back pocket to back over welts, matching stitching lines and symbols. Stitch along stitching lines between small dots. Slash along slash line, clipping diagonally to small circles and being careful not to cut welts.



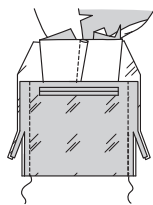
15. Turn pocket and triangular ends to inside, pulling ends of welts between triangular ends, as shown. Press. Stitch welts and triangular ends together, keeping back free.



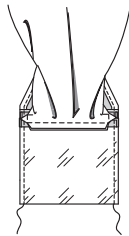
16. On outside, whipstitch welt edges together loosely by hand.



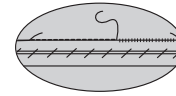
17. With wrong sides together, fold back pocket along foldline. Stitch side edges in 3/8" (1cm) seam, keeping back free. Trim seams to 1/8" (3mm).



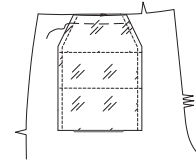
18. Turn pocket wrong side out, creasing along seam and turning raw upper side edges under along seamline. Press. Stitch a scant 1/4" (6mm) from upper and lower side edges, keeping back free.



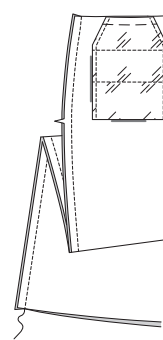
19. To hold upper welt and ends in place, on outside, spread welt seam with fingers until previous stitching is visible. Stitch on top of previous stitching.



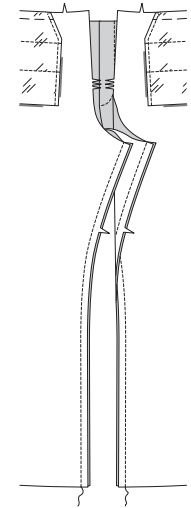
20. Baste upper edge of pocket to back, as shown.



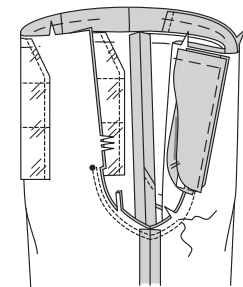
21. Stitch front to back at sides.



22. Stitch front and back together at inner leg edge.

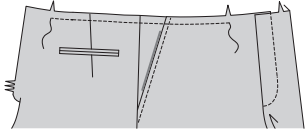


23. For crotch seam, turn one pant leg right side out; slip inside remaining pant leg. Stitch along seamline below small dot on back and connecting to previous stitching in front. Stitch again 1/4" (6mm) away in seam allowance between small dot and front notch. Trim close to second stitching.

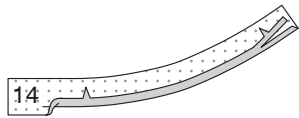


WAISTBAND AND FINISHING

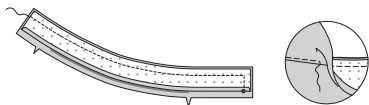
24. STAYSTITCH upper edges of pants between notches.



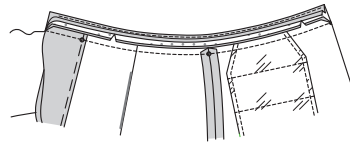
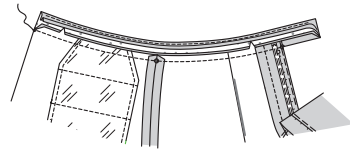
25. For facing, turn in seam allowance on lower edge of one left and one right **WAISTBAND (14)** section. Press, easing in fullness where necessary. Trim pressed seam allowance to 3/8" (1cm).



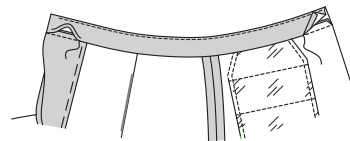
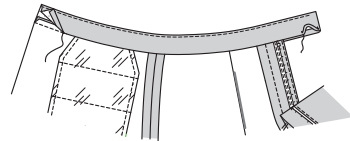
26. For each side, pin one waistband facing to one waistband section. Stitch upper and front edges. **UNDERSTITCH** facing.



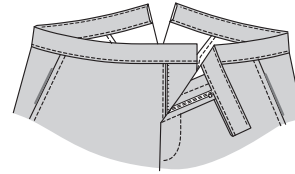
27. Pin waistband sections to upper edge of pants, matching centers, placing inner small dots at side seams, clipping pants where necessary. Baste. Stitch, keeping pressed edges free. Trim. Press seams toward waistbands, pressing in remainder of seam allowance on left waistband extension.



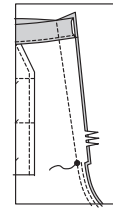
28. SLIPSTITCH pressed edges over seams and extension edges together, as shown.



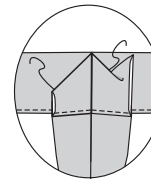
29. EDGESTITCH waistbands, as shown.



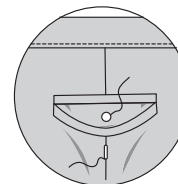
30. Stitch remainder of center back seam along stitching line, continuing across waistband along center back.



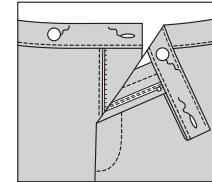
31. Turn in upper ends diagonally, as shown. Press. **SLIPSTITCH** in place.



32. Open out back pockets. Make buttonholes in back at markings, catching only one layer of pocket. Sew buttons to back pocket facings at small dots.

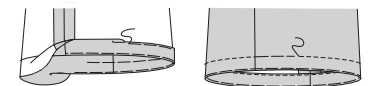
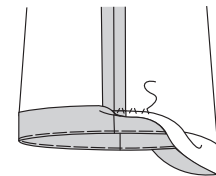


33. Make buttonholes in waistband at markings. On inside, sew button to left waistband at small dot, as shown. On outside sew button to right waistband at small dot.



34. Turn up 1 1/4" (3.2cm) hem on lower edge of pants. Baste close to fold. **FINISH** raw edge. Sew in place. Press.

OPTIONAL HEM FINISHING: Turn up pants hem. Baste close to fold. Turn in 1/4" (6mm) on raw edge. Baste hem in place close to upper edge. Press. **TOPSTITCH** hem along upper basting.



To form creases, bring leg seams together; press along folds to within 9" (23cm) of upper edge.



Congrats!


You've completed your sewing adventure!

**SHARE
YOUR** look!



Post your pattern and tag us at
@knowmepatterns and use #knowmepatterns
for a chance to be featured on our social media!

Look for more Know Me PDF patterns at [SomethingDelightful.com/know-me/](https://www.somethingdelightful.com/know-me/)

 1-800-255-2762

© 2023 KnowMe® an IG Design Group Americas, Inc. brand. | All Rights Reserved.
Sold for individual home use only and not for commercial or manufacturing purposes.