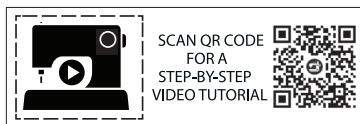


ME2034



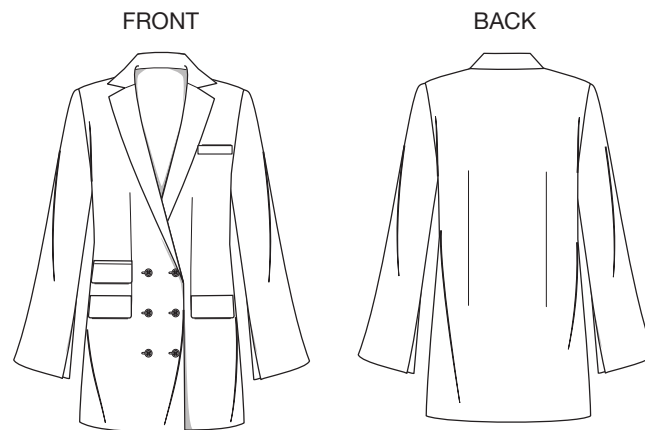
@beautejadore

THINGS YOU NEED:

- > Seven ¾" (2cm) buttons, one pair of shoulder pads.

SUGGESTED FABRICS:

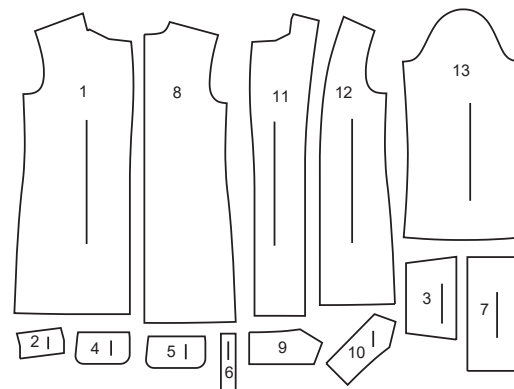
- > Cotton Blends, Damask, Gabardine, Jacquards, Linen Blends, Sateen, Stretch Wovens, Tweed, Velvet, Wool Blends. **Lining:** Cotton Blends, Polyester, Silky Types. **Interfacing:** Lightweight Fusible.



Your printed tile pieces should be assembled before you move on to this step!

PIECES (13)

- 1 FRONT
- 2 UPPER WELT
- 3 UPPER POCKET LINING
- 4 UPPER FLAP
- 5 LOWER FLAP
- 6 LOWER WELT
- 7 LOWER POCKET LINING
- 8 BACK
- 9 UPPER COLLAR
- 10 UNDER COLLAR
- 11 FRONT FACING
- 12 FRONT LINING
- 13 SLEEVE



>> MISSES' JACKET DRESS
 SKILL LEVEL: AVERAGE

PDF
 ↓
PDF PATTERNS

YARDAGE CHARTS

SIZES	8	10	12	14	16	18	20	22	24	26	
JACKET											
45"*	2 ⁷ / ₈	2 ⁷ / ₈	2 ⁷ / ₈	3	3	3	3	3 ¹ / ₈	3 ¹ / ₈	3 ¹ / ₈	yds.
60"*	2 ¹ / ₈	2 ¹ / ₈	2 ¹ / ₈	2 ¹ / ₈	2 ¹ / ₄	2 ¹ / ₄	2 ³ / ₈	2 ³ / ₄	2 ³ / ₄	2 ³ / ₄	"
115cm*	2.7	2.7	2.7	2.7	2.8	2.8	2.8	2.8	2.9	2.9	m.
150cm*	2.0	2.0	2.0	2.0	2.0	2.1	2.2	2.6	2.6	2.6	"
LINING											
45"***	2 ¹ / ₈	2 ¹ / ₈	2 ¹ / ₈	2 ¹ / ₈	2 ¹ / ₄	2 ¹ / ₄	2 ³ / ₈	2 ³ / ₈	2 ³ / ₈	2 ⁵ / ₈	yds.
115cm**	2.0	2.0	2.0	2.0	2.0	2.1	2.2	2.2	2.2	2.4	m.
INTERFACING											
20"	2 ¹ / ₈	2 ¹ / ₈	2 ¹ / ₈	2 ¹ / ₈	2 ¹ / ₄	2 ¹ / ₄	2 ¹ / ₄	2 ¹ / ₄	2 ¹ / ₄	2 ¹ / ₄	yds.
51cm	2.0	2.0	2.0	2.0	2.0	2.1	2.1	2.1	2.1	2.1	m.

FINISHED GARMENT MEASUREMENTS

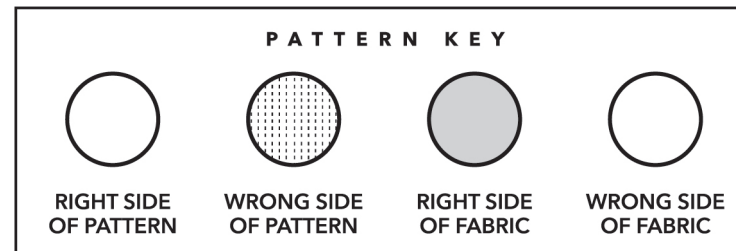
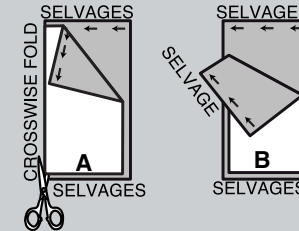
SIZES	8	10	12	14	16	18	20	22	24	26	
BUST	35½	36½	38	40	42	44	46	48	50	52	in.
	90	93	97	102	107	112	117	122	127	132	cm.
WAIST	31½	32½	34	36	38	40	42	44	46	48	in.
	80	83	86	91	97	102	107	112	117	122	cm.
HIP	38	39	40½	42½	44½	46½	48½	50½	52½	54½	in.
	97	99	103	108	113	118	123	128	133	138	cm.
WIDTH, LOWER EDGE											
JACKET	39½	40½	42	44	46	48	50	52	54	56	in.
	100	103	107	112	117	122	127	132	137	142	cm.
FINISHED BACK LENGTH FROM BASE OF NECK											
JACKET	31¾	32	32¼	32½	32¾	33	33¼	33½	33¾	34	in.
	81	81	82	83	83	84	84	85	86	86	cm.

BODY MEASUREMENTS

SIZES	8	10	12	14	16	18	20	22	24	26	
BUST	31½	32½	34	36	38	40	42	44	46	48	in.
	80	83	87	92	97	102	107	112	117	122	cm.
WAIST	24	25	26½	28	30	32	34	37	39	41	in.
	61	64	67	71	76	81	87	94	99	104	cm.
HIP-9" (23CM) BELOW WAIST	33½	34½	36	38	40	42	44	46	48	50	in.
	85	88	92	97	102	107	112	117	122	127	cm.
BACK-NECK TO WAIST	15¾	16	16¼	16½	16¾	17	17¼	17½	17¾	18	in.
	40	40.5	41.5	42	42.5	43	44	44.5	45	46	cm.

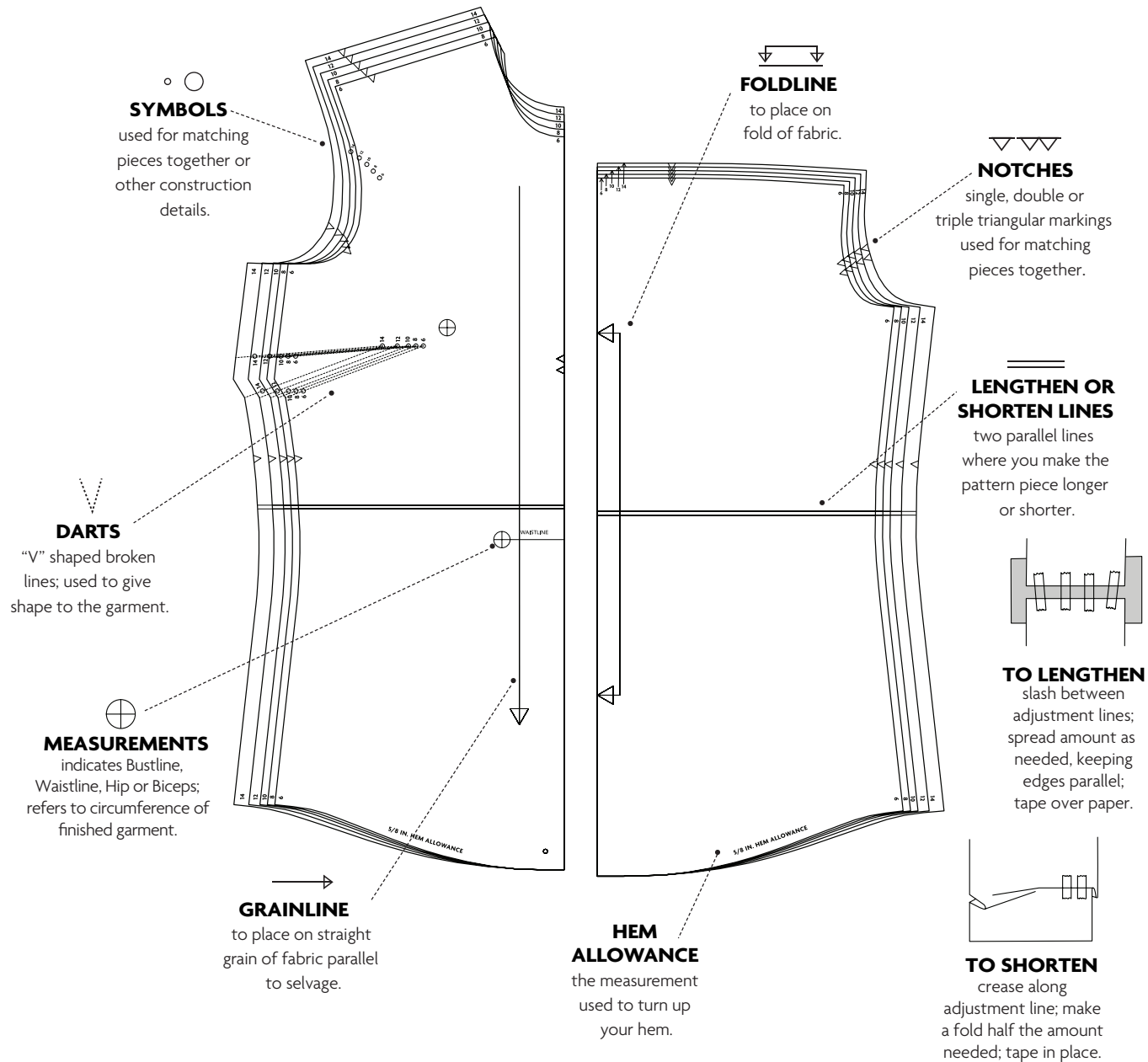
CUTTING AND MARKING

- > **SHRINK FABRIC** if not labeled pre-shrunk. Press.
- > **CIRCLE LAYOUT** for View, Size, Fabric Width.
- > Use **WITH NAP** layout for fabrics with one-way designs, nap, pile or surface shading. Because most knits have surface shading, a with nap layout is used.
- > For **DOUBLE THICKNESS (WITH FOLD)**, fold fabric with right sides together.
- > ***DOUBLE THICKNESS (WITHOUT FOLD)**, for fabrics with nap, fold fabric crosswise, right sides together. Mark as shown. Cut along crosswise fold of fabric (A). Turn upper layer 180° so arrows go in same direction and place over lower layer, right sides together (B).
- > For **SINGLE THICKNESS**, place fabric right side up. (For Fur Pile fabrics, place pile side down.)



- > Before **CUTTING**, place all pieces on fabric according to layout. Pin.
(Layouts show approximate position of pattern pieces; position may vary according to your pattern size.)
- > ★ Cut other pieces first, allowing enough fabric to cut this piece. Open fabric. Cut piece on single layer of fabric with piece face up on right side of fabric.
- > Cut accurately, cutting notches outward.
- > Before removing pattern, **TRANSFER MARKINGS** and lines of construction to **WRONG SIDE** of fabric, using Pin and Chalk Pencil method or Tracing Paper and Dressmaker Wheel. Markings needed on right side of fabric should be thread traced.
NOTE: Broken-line boxes (a! b! c!) in layouts represent pieces cut by measurements provided.
- > Prewash your fabric using a method that's suitable for the fabric type.
- > Fold fabric with right sides together, matching **SELVAGES**.
- > Pin your pattern pieces to the fabric as shown below and cut them out using a sharp pair of dressmaker's shears.

PATTERN MARKINGS

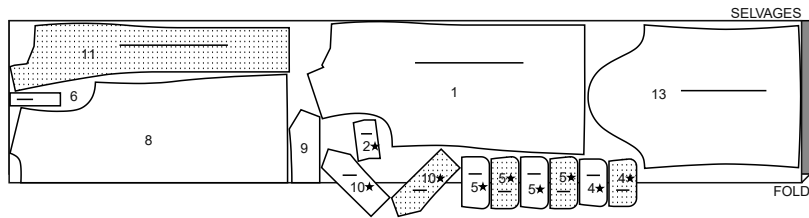


CUTTING LAYOUTS

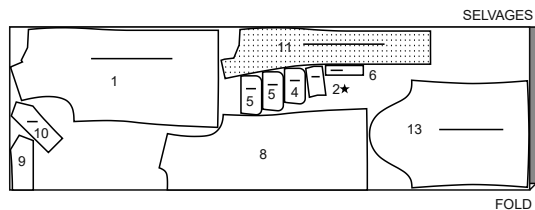
JACKET DRESS

use pieces: 1 2 4 5 6 8 9 10 11 13

45" (115 cm)
with nap
all sizes



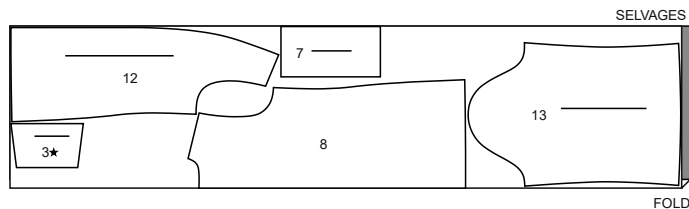
60" (150cm)
with nap
all sizes



LINING (FRONT, BACK, POCKETS, SLEEVES)

use pieces: 3 7 8 12 13

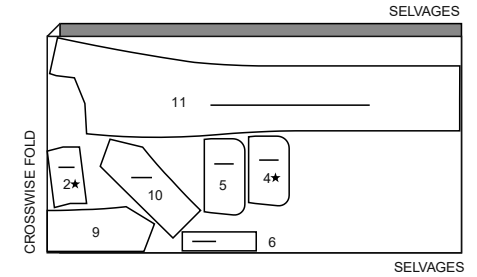
45" (115cm)
without nap
all sizes



INTERFACING (FACING, COLLAR, FLAPS, WELT)

use pieces: 2 4 5 6 9 10 11

20" (51cm)
all sizes



PATTERN PIECES WILL BE IDENTIFIED BY NUMBERS THE FIRST TIME THEY ARE USED.

SEWING INFORMATION

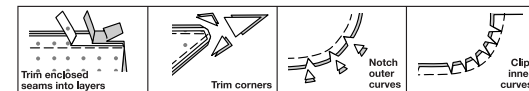
⁵/₈" (1.5cm) SEAM ALLOWANCES ARE INCLUDED, (unless otherwise indicated)

ILLUSTRATION SHADING KEY

Right Side	Wrong Side	Interfacing	Lining	Underlining

Pin or baste seams, right side together, matching notches. Fit garment before stitching major seams.

Press seam allowances flat; then open unless otherwise stated. Clip where necessary so they lie flat.



GLOSSARY

Sewing terms appearing in **BOLD TYPE** in Sewing Instructions are explained below.

EASESTITCH – Stitch along seamline and 1/4" (6mm) inside seamline, using long machine stitches. Pull thread ends when adjusting fit.

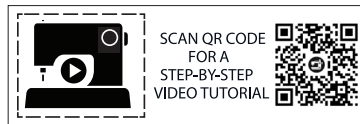
REINFORCE – Stitch along seamline where indicated in sewing instructions, using small machine stitches.

SLIPSTITCH – Slide needle through a folded edge, then pick up a thread of underneath fabric.

STAYSTITCH – Stitch 1/8" (3mm) from seamline in seam allowance [usually 1/2" (1.3cm) from raw edge].

TOPSTITCH – On outside, stitch 1/4" (6mm) from edge, seam or previous stitching.

UNDERSTITCH – Open out facing or underside of garment; stitch to seam allowance close to seam.



SCAN QR CODE
FOR A
STEP-BY-STEP
VIDEO TUTORIAL

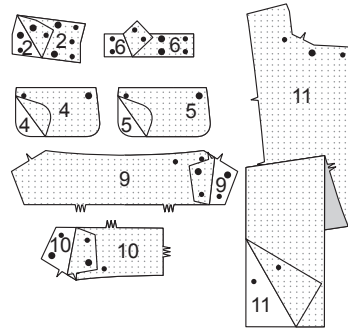
@beautejadore

SEWING DIRECTIONS

JACKET DRESS

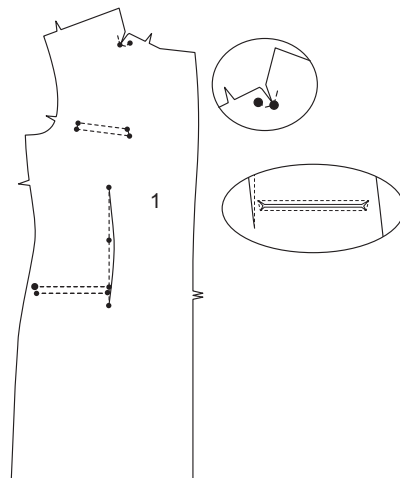
INTERFACING

1. Pin Interfacing to wrong side of UPPER WELT (2), UPPER FLAP (4), LOWER FLAP (5), LOWER WELT (6), UPPER COLLAR (9), UNDER COLLAR (10), and FRONT FACING (11) sections. Fuse, following manufacturer's instructions.



2. Make long dart in front (1). Press toward center.

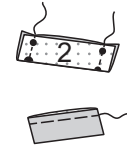
REINFORCE upper small dot of front (1). Clip to reinforced small dot at inner corner, being careful not to clip through stitching. **REINFORCE** stitching lines for upper left side welt between the small dots, and stitching lines for lower welts between large and small dots, as shown. Slash front sections along slash line and diagonally to inner corners.



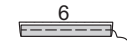
WELTS, POCKETS, AND FLAPS

3. To make one upper welt, fold UPPER WELT (2) in half lengthwise, with right sides together, matching large and small dots. Stitch ends. Trim seams; clip corners.

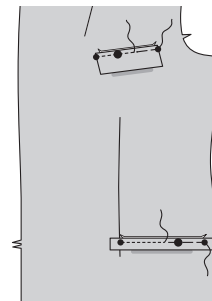
Turn welt right side out; press. Machine-baste 3/8" (1 cm) from raw edge.



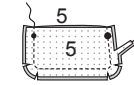
4. To make lower welts, fold LOWER WELT (6) in half with wrong sides together. Baste 3/8" (1 cm) from raw edge.



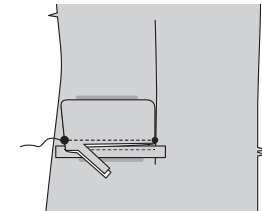
5. On outside, pin upper welt to left front and lower welt to both front sections, placing basting line along lower stitching line, matching small and large dots. Baste. Stitch along basting. Trim raw edge of welt to 1/4" (6mm).



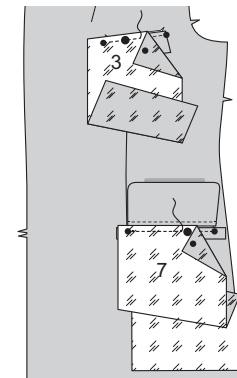
6. To make two lower flaps, pin two LOWER FLAP (5) sections with right sides together and raw edges even. Stitch curved edge and ends. Trim seam; clip curves.



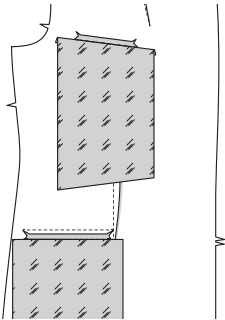
7. Turn flap sections; press. Baste raw edges together. On outside, pin lower flap to front, placing basting line along upper stitching line, matching small and large dots. Baste. Stitch along basting. Trim raw edge of flap to 1/4" (6mm).



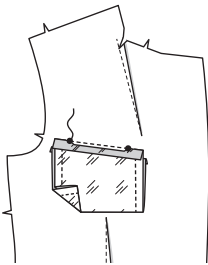
8. With right sides together, pin upper pocket lining (3) and lower pocket lining (7) sections to front (over welts), matching stitching lines and small dots. Stitch between small dots at corners, back-stitching to reinforce.



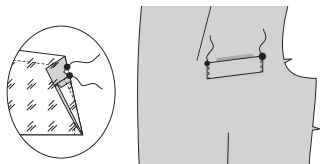
9. Turn pocket and triangular ends to inside; press.



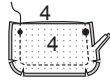
10. On inside, fold pocket along foldline with right sides together, matching small dots. Fold down upper part of front along stitching line. Stitch between the small dots, back-stitching at dots to reinforce the seam.



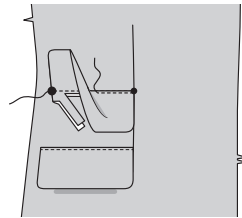
11. For upper pocket, on outside, press welt toward pressed edge of triangular ends. Stitch close to ends of welt. For lower pockets, on outside, press welts up, turning ends to inside. From inside, stitch triangles between small dots, catching ends of welts. Press.



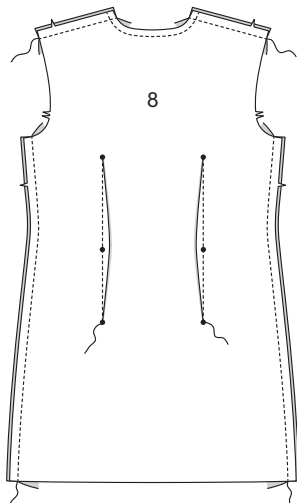
12. Pin two UPPER FLAP (4) sections with right sides together and raw edges even. Stitch curved edge and ends. Trim seam; clip curves.



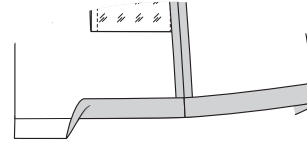
13. Turn flap; press. Machine-baste 5/8" (1.5cm) from raw edge. On outside, pin flap to right front, placing basting along flap line, matching small and large dots, as shown. Stitch along basting. Trim close to stitching. Turn flap down; press. **TOPSTITCH** close to upper edge.



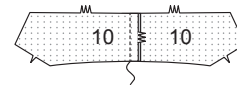
14. STAYSTITCH neck edge of BACK (8). Make darts. Press darts toward center. Stitch front to back at shoulder and side edges.



15. Turn up hem allowance. Press hem in place setting in a crease. Open out the hem. The hem will be finished in a later step.



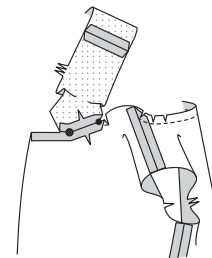
16. Stitch center back seam of UNDER COLLAR (10) sections.



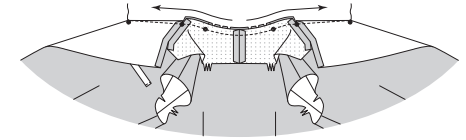
17. With right sides together, pin front edge of under collar to front edge of coat, matching small and large dots, having raw edges even. Stitch between small and large dots, back-stitching to reinforce.

Do not trim this seam now. For best results, this seam will be trimmed later. Press seam open.

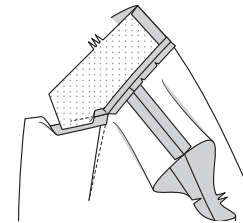
Clip back neck edge of coat to stay-stitching along curves.



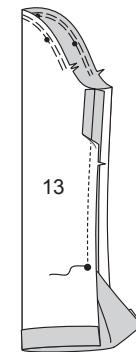
18. To stitch remaining neck edge and make dart in front, on inside, with right sides together bring seam lines and broken lines together, matching centers back and small dots, placing inner small dot at shoulder seam. Stitch each side from center back to point of dart along broken lines.



19. Trim neck seam between darts; clip curves. Press neck seam open between outer small dots, pressing dart toward front.

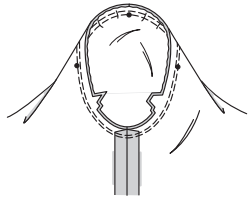


20. EASESTITCH top of sleeve (13) between notches. Stitch underarm seam from armhole edge to large dot, back-stitching at dot to reinforce the seam. Press up 1-1/2" (3.8cm) hem allowance, setting in a crease.

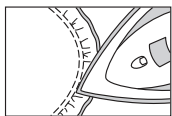


21. Turn sleeve right side out. Hold garment wrong side out with armhole toward you. With right sides together, pin sleeve to armhole edge with center small dot at shoulder seam, matching underarm seams, notches and remaining small dots. Pull up ease stitches to fit.

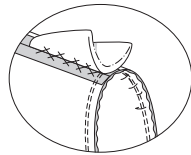
To distribute fullness evenly, slide fabric along bobbin threads until there are no puckers or tucks on the seam line. Baste. Stitch. Stitch again 1/8" (3mm) from first stitching. Trim seam below notches close to stitching.



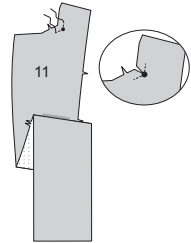
22. With the sleeve side up, place the upper portion of the armhole seam (the area between the notches) over the end of the ironing or sleeve board. With the point of the iron, press only the seam allowances. Use steam if appropriate for your fabrics. This blends the stitching and shrinks out some of the fullness. No further pressing is needed because the seam allowances will naturally turn toward the sleeve.



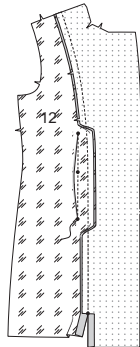
23. Pin the shoulder pad to the inside of the coat so that the largest layer of the pad is against the coat. The shoulder line of the pad should match the shoulder seam of the coat and the straightest edge of the pad should extend 1/2" (1.3cm) beyond the armhole seam line. Try on coat to check pad placement. Adjust to fit until pads look right and feel comfortable. On inside, catch-stitch pad to shoulder seam line.



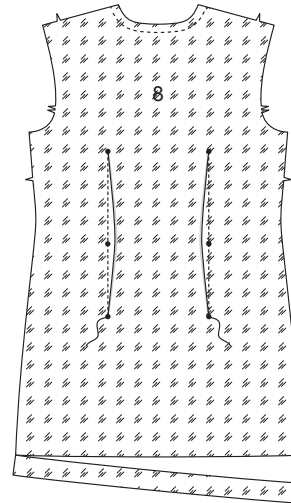
24. REINFORCE small dot at inner corner of FRONT FACING (11). Clip to stitching at small dot.



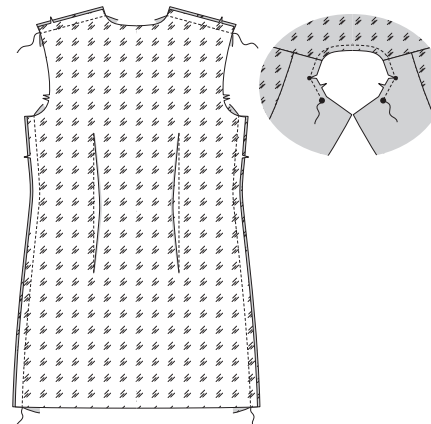
25. Make dart in FRONT LINING (12) sections. Press toward back. Pin front lining to front facing, matching notches. Stitch from shoulder edge to small dot, back-stitching at dot to reinforce seam. Clip only facing seam allowance to small dot. Press seam toward lining, pressing under 5/8" (1.5cm) on inner edge of facing below clip, as shown.



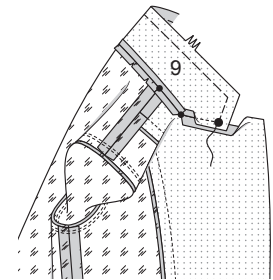
26. STAYSTITCH neck edge of back lining. Trim 1" (2.5cm) from lower edge. Make darts.



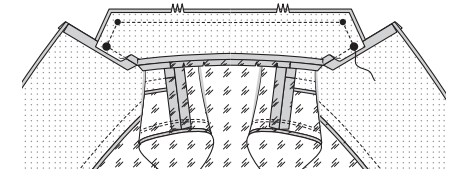
27. Stitch back lining to front lining and facing at shoulder and side edges. **STAYSTITCH** remainder of neck edge between large dots. Trim 1" (2.5cm) from lower edge of sleeve lining. Stitch and insert sleeves in same manner as for coat.



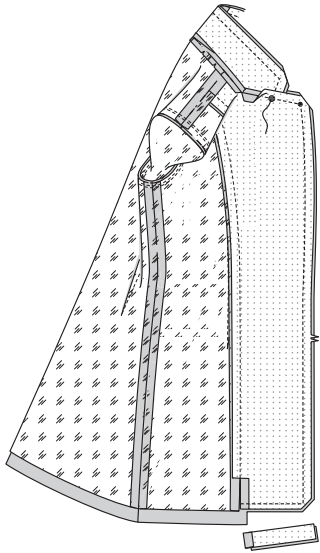
28. EASESTITCH UPPER COLLAR (9). With right sides together, pin upper collar to neck edge of facing and lining, matching centers back, small, and large dots, and placing inner small dots at shoulder seams. Stitch between large dots, pivoting with needle in fabric at inner corners. Trim back neck seam allowance between shoulder seams. Clip curves. Press seam open.



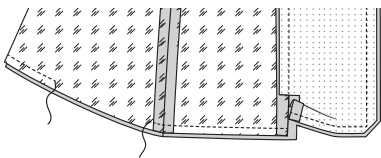
29. With RIGHT sides together, pin upper collar to under collar, matching centers back, small and large dots. Turn neck seam allowances down. Hand-baste outer edges of upper and under collar together between large dots, working basting stitches from center back to large dot, adjusting ease. Stitch as basted from center back to large dot, overlapping a few stitches at center back and anchoring thread ends securely at large dots.



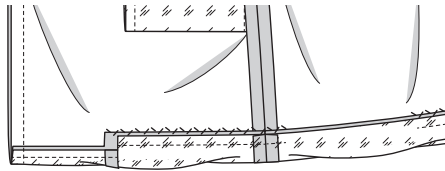
30. UNDERSTITCH upper edge of under collar as far as possible. Pin front facing to coat, matching small and large dots. Baste from large dot to inner edge of facing. Insert machine needle at the large dot. Stitch as basted, being careful not to catch in collar seam allowances at large dot; back-stitch at inner pressed edge of facing. Anchor thread ends securely at large dots. Trim lower edge of facing close to stitching; trim coat to within 5/8" (1.5cm) of inner edge of facing. Trim each seam of collar and facing carefully to within 1/4" (6mm) of stitching. Trim across collar and lapel corners.



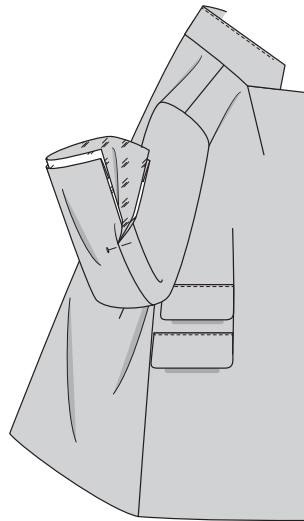
31. UNDERSTITCH front lapel from upper edge to 1" (2.5cm) above upper buttonhole marking, and front facing from 3" (7.5cm) below upper buttonhole marking to lower edge. Pin lower edge of coat and lining together, matching centers back and side seams, keeping the front facing out of the way (a pleat will form in the coat). Stitch lower edges between facing seams in a 1/2" (1.3cm) seam, leaving an opening at lower edge of back to turn coat.



32. With the wrong side of coat facing you, turn up hem on lower edge of coat along crease. Catch-stitch coat hem in place, being careful not to catch in opening edge of lining in back.

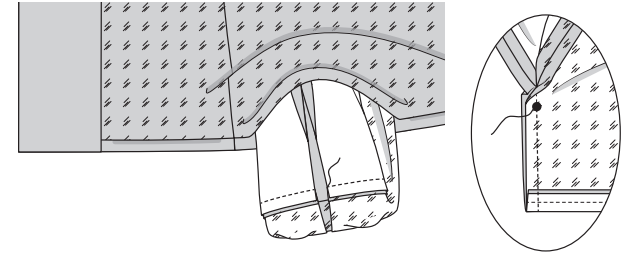


33. Turn coat right side out; press. Slip sleeve in place. To match seams correctly, turn seam allowance on sleeve edges of coat and lining toward each other at underarm slit, as shown. Anchor turned edges with pins. (This will enable you to pin the lower edges together more easily when you are ready to stitch the sleeve edges together.)

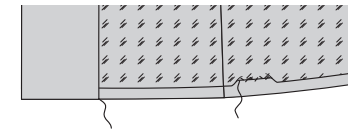


34. Pull sleeve through the opening in lower edge of jacket dress, having wrong sides out, separating the dress sleeve from the lining sleeve.

With right sides together, pin sleeve edges together, matching underarm seams. Remove anchoring pins. Stitch lower sleeve edge in a 1/2" (1.3cm) seam. Trim seam. Fold up sleeve hem along crease. Stitch edges of underarm slits (remaining segments of underarm seam) from folded hem edge of sleeve to large dot. Backstitch at dots to reinforce the seam.

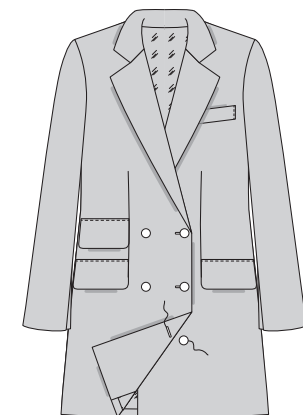


35. Slip hand through opening in lower edges of coat. Tack neck seams of coat and lining together loosely. Press under 1/2" (1.3cm) on remaining lower edge of lining. Slip-stitch pressed edge of lining 1" (2.5cm) above lower edge of coat. Allow coat and sleeve lining to drop. Press folded edges in place. **SLIPSTITCH** front facing to hem and remaining front edges of lining to facing.



FINISHING

36. On outside, make buttonholes in right front and inner edge of left front at markings. Sew buttons to fronts at small dots. On inside, sew button to right front facing under upper outside button.





Congrats!


You've completed your sewing adventure!

SHARE YOUR look!



Post your pattern and tag us at
@knowmepatterns and use #knowmepatterns
for a chance to be featured on our social media!

Look for more Know Me PDF patterns at [SomethingDelightful.com/know-me/](https://www.somethingdelightful.com/know-me/)

 1-800-255-2762

© 2023 KnowMe® an IG Design Group Americas, Inc. brand. | All Rights Reserved.
Sold for individual home use only and not for commercial or manufacturing purposes.