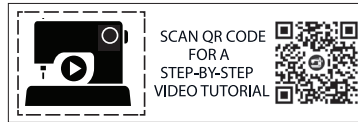


# ME2032



@thestitchfitz



>> MISSES' DRESS IN  
 TWO LENGTHS  
 SKILL LEVEL: AVERAGE



PDF PATTERNS

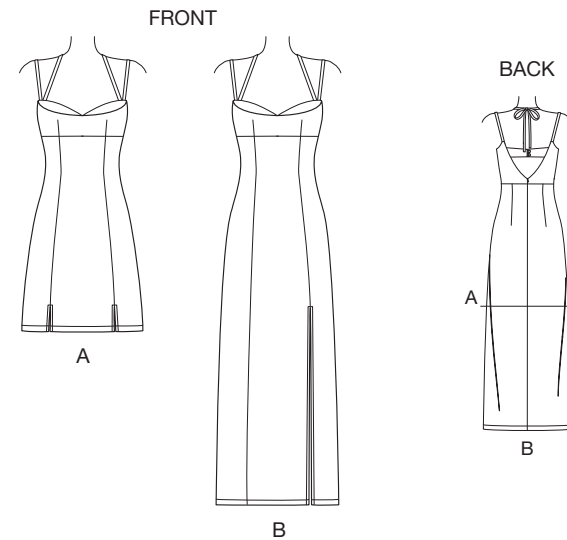
### THINGS YOU NEED:

> **A,B:** 12" (30cm) zipper (cut to fit), two ½" (1.3cm) buttons.

### SUGGESTED FABRICS:

> Cotton Blends, Crepe de Chine, Rayon, Satin, Silky Types.

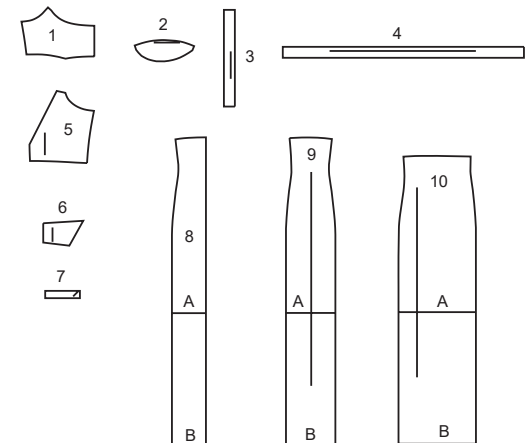
**Lining:** Cotton Blends, Lining Fabrics. **Interfacing:** Lightweight Fusible.



Your printed tile pieces should be assembled before you move on to this step!

### PIECES (10)

- 1 BODICE FRONT - A,B
- 2 FRONT INSET - A,B
- 3 SHOULDER STRAP - A,B
- 4 TIE - A,B
- 5 BODICE BACK - A,B
- 6 BACK TAB - A,B
- 7 LOOP - A,B
- 8 SKIRT FRONT - A,B
- 9 SKIRT SIDE FRONT - A,B
- 10 SKIRT BACK - A,B



## YARDAGE CHART

SIZES	8	10	12	14	16	18	20	22	24	26	
<b>LINING A,B-</b> 45"*** (115cm**) - ½ yd. (0.5m)											
<b>INTERFACING A,B-</b> 20" (51cm) - ½ yd. (0.5m)											
<b>DRESS A</b>											
45"*	1⅝	1⅝	1⅝	1⅝	1¾	1⅞	1⅞	1⅞	1⅞	1⅞	yds.
60"*	1¼	1¼	1¼	1¼	1¼	1¼	1¼	1⅜	1⅜	1⅝	"
115cm*	1.5	1.5	1.5	1.5	1.6	1.8	1.8	1.8	1.8	1.8	m.
150cm*	1.2	1.2	1.2	1.2	1.2	1.2	1.2	1.3	1.3	1.4	"
<b>DRESS B</b>											
45"*	2¼	2⅜	2⅜	2⅜	2⅜	2⅜	2⅜	2⅜	2⅞	2⅞	yds.
60"*	1⅝	1⅝	1⅝	1⅝	1¾	1¾	1¾	2	2¼	2⅜	"
115cm*	2.1	2.2	2.2	2.2	2.2	2.2	2.2	2.2	2.7	2.7	m.
150cm*	1.4	1.5	1.5	1.5	1.6	1.6	1.6	1.9	2.1	2.2	"

## FINISHED GARMENT MEASUREMENTS

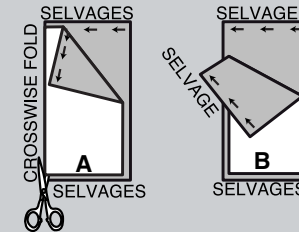
SIZES	8	10	12	14	16	18	20	22	24	26	
<b>A,B BUST</b>	32½	33½	35	37	39	41	43	45	47	49	in.
	83	85	89	94	99	104	109	114	119	124	cm.
<b>A,B WAIST</b>	26	27	28½	30½	32½	34½	36½	38½	40½	42½	in.
	66	69	72	77	83	88	93	98	103	108	cm.
<b>A,B HIP</b>	36½	37½	39	41	43	45	47	49	51	53	in.
	93	95	99	104	109	114	119	124	130	135	cm.
<b>WIDTH, LOWER EDGE</b>											
<b>DRESS A,B</b>	36½	37½	39	41	43	45	47	49	51	53	in.
	93	95	99	104	109	114	119	124	130	135	cm.
<b>FINISHED BACK LENGTH FROM BASE OF NECK</b>											
<b>DRESS A</b>	33¾	34	34¼	34½	34¾	35	35¼	35½	35¾	36	in.
	86	86	87	88	88	89	90	90	91	91	cm.
<b>DRESS B</b>	51¾	52	52¼	52½	52¾	53	53¼	53½	53¾	54	in.
	131	132	133	133	134	135	135	136	137	137	cm.

## BODY MEASUREMENTS

SIZES	8	10	12	14	16	18	20	22	24	26	
<b>BUST</b>	31½	32½	34	36	38	40	42	44	46	48	in.
	80	83	87	92	97	102	107	112	117	122	cm.
<b>WAIST</b>	24	25	26½	28	30	32	34	37	39	41	in.
	61	64	67	71	76	81	87	94	99	104	cm.
<b>HIP-9" (23CM) BELOW WAIST</b>	33½	34½	36	38	40	42	44	46	48	50	in.
	85	88	92	97	102	107	112	117	122	127	cm.
<b>BACK-NECK TO WAIST</b>	15¾	16	16¼	16½	16¾	17	17¼	17½	17¾	18	in.
	40	40.5	41.5	42	42.5	43	44	44.5	45	46	cm.

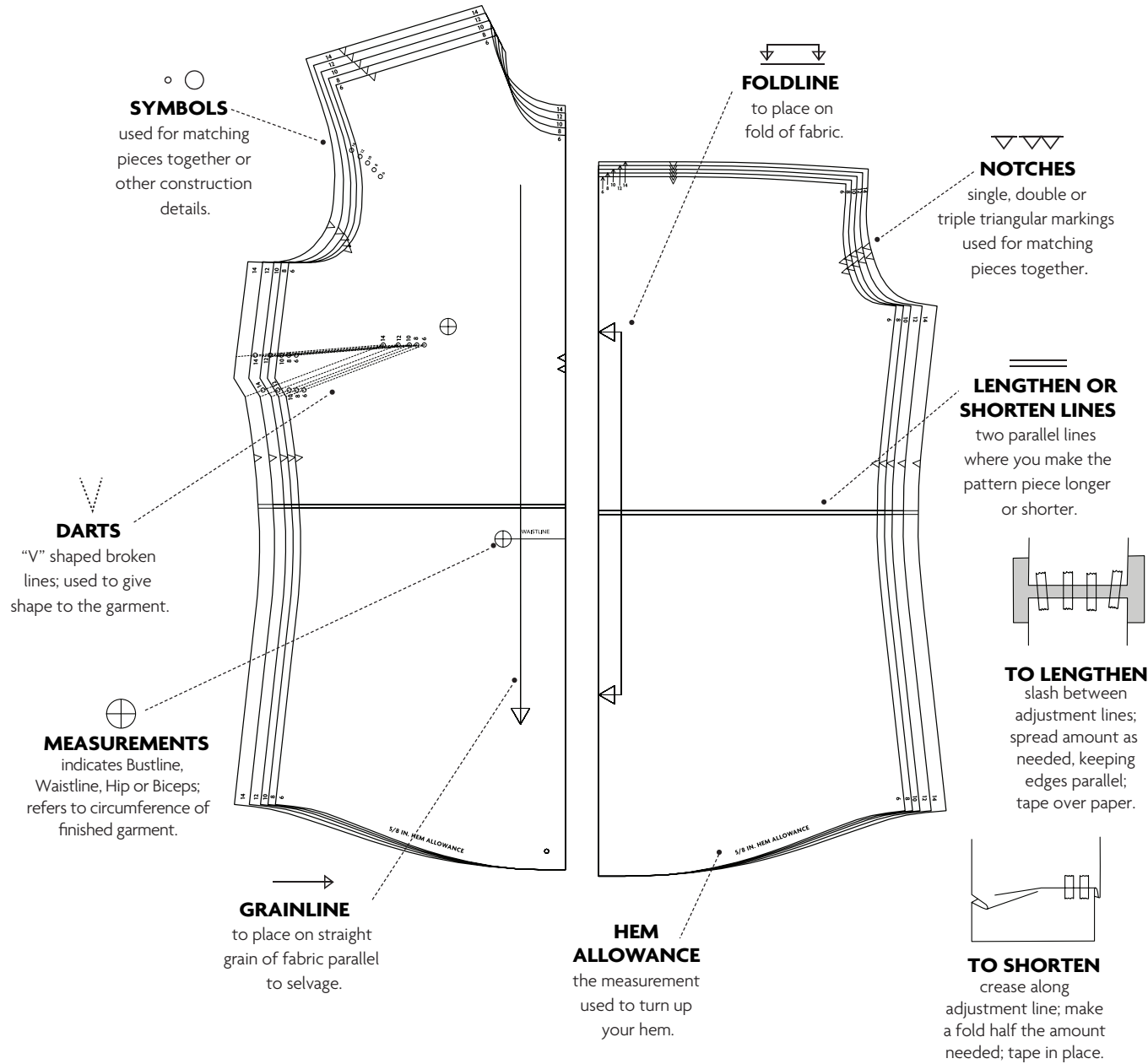
## CUTTING AND MARKING

- > **SHRINK FABRIC** if not labeled pre-shrunk. Press.
- > **CIRCLE LAYOUT** for View, Size, Fabric Width.
- > Use **WITH NAP** layout for fabrics with one-way designs, nap, pile or surface shading. Because most knits have surface shading, a with nap layout is used.
- > For **DOUBLE THICKNESS (WITH FOLD)**, fold fabric with right sides together.
- > \***DOUBLE THICKNESS (WITHOUT FOLD)**, for fabrics with nap, fold fabric crosswise, right sides together. Mark as shown. Cut along crosswise fold of fabric (A). Turn upper layer 180° so arrows go in same direction and place over lower layer, right sides together (B).
- > For **SINGLE THICKNESS**, place fabric right side up. (For Fur Pile fabrics, place pile side down.)



- > Before **CUTTING**, place all pieces on fabric according to layout. Pin.  
(Layouts show approximate position of pattern pieces; position may vary according to your pattern size.)
- > ★ Cut other pieces first, allowing enough fabric to cut this piece. Open fabric. Cut piece on single layer of fabric with piece face up on right side of fabric.
- > Cut accurately, cutting notches outward.
- > Before removing pattern, **TRANSFER MARKINGS** and lines of construction to **WRONG SIDE** of fabric, using Pin and Chalk Pencil method or Tracing Paper and Dressmaker Wheel. Markings needed on right side of fabric should be thread traced.  
**NOTE:** Broken-line boxes (a! b! c!) in layouts represent pieces cut by measurements provided.
- > Prewash your fabric using a method that's suitable for the fabric type.
- > Fold fabric with right sides together, matching **SELVAGES**.
- > Pin your pattern pieces to the fabric as shown below and cut them out using a sharp pair of dressmaker's shears.

## PATTERN MARKINGS

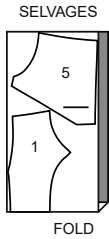


**CUTTING LAYOUTS**

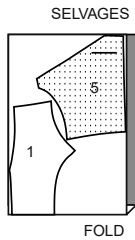
**LINING A,B**

use pieces: 1 5

45" (115 cm)  
without nap  
sizes 8 10 12 14 16 18 20



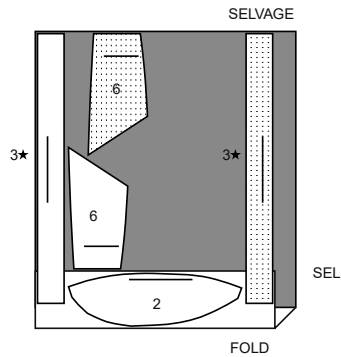
45" (115 cm)  
without nap  
sizes 22 24 26



**INTERFACING A,B**

use pieces: 2 3 6

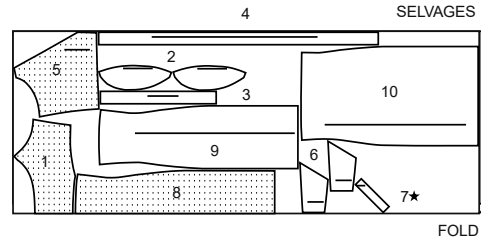
20" (51 cm)  
all sizes



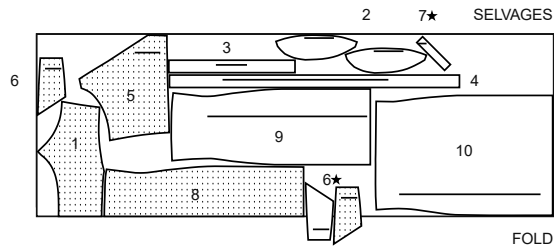
**DRESS A**

use pieces: 1 2 3 4 5 6 7 8 9 10

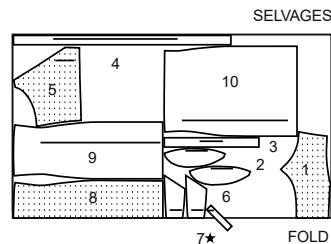
45" (115 cm)  
with nap  
sizes 8 10 12 14 16



45" (115 cm)  
with nap  
sizes 18 20 22 24 26



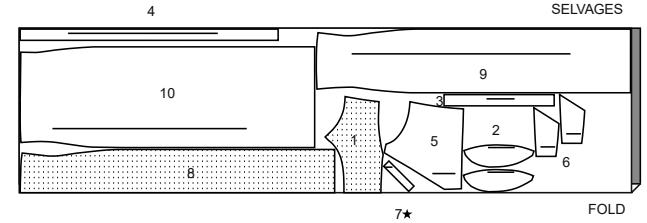
60" (150 cm)  
with nap  
all sizes



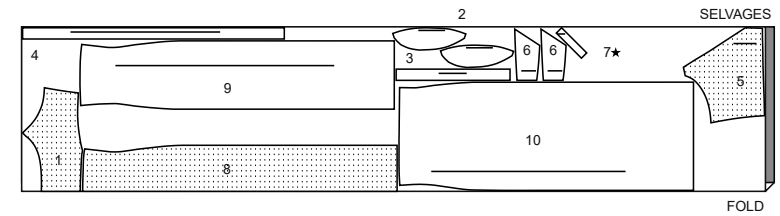
**DRESS B**

use pieces: 1 2 3 4 5 6 7 8 9 10

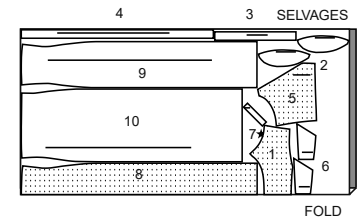
45" (115 cm)  
with nap  
sizes 8 10 12 14 16 18 20 22



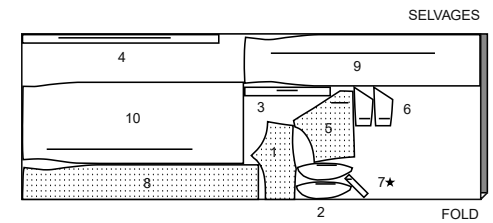
45" (115 cm)  
with nap  
sizes 24 26



60" (150 cm)  
with nap  
sizes 8 10 12 14 16 18 20



60" (150 cm)  
with nap  
sizes 22 24 26



PATTERN PIECES WILL BE IDENTIFIED BY NUMBERS THE FIRST TIME THEY ARE USED.

## SEWING INFORMATION

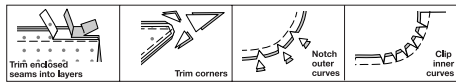
**5/8" (1.5cm) SEAM ALLOWANCES ARE INCLUDED,** (unless otherwise indicated)

### ILLUSTRATION SHADING KEY

Right Side	Wrong Side	Interfacing	Lining	Underlining

Pin or baste seams, right side together, matching notches. Fit garment before stitching major seams.

Press seam allowances flat; then open unless otherwise stated. Clip where necessary so they lie flat.



## GLOSSARY

Sewing terms appearing in **BOLD TYPE** in Sewing Instructions are explained below.

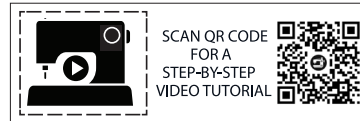
**NARROW HEM** - Turn in hem; press, easing in fullness if necessary. Open out hem. Turn in again so raw edge is along crease; press. Turn in along crease; stitch.

**SLIPSTITCH** - Slide needle through a folded edge, then pick up a thread of underneath fabric.

**STAYSTITCH** - Stitch 1/8" (3mm) from seamline in seam allowance (usually 1/2" (1.3cm) from raw edge).

**TOPSTITCH** - On outside, stitch 1/4" (6mm) from edge, seam or previous stitching, using presser foot as guide, or stitch where indicated in instructions.

**UNDERSTITCH** - Open out facing or underside of garment; stitch to seam allowance close to seam.



@thestitchfitz

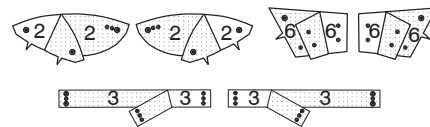
## SEWING DIRECTIONS

**NOTE:** Under each sub-heading, the first view will be illustrated, unless otherwise illustrated.

### DRESS A, B

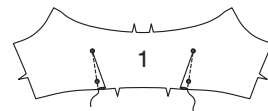
#### INTERFACING

1. Fuse **INTERFACING** to wrong side of each matching **FABRIC** section, following manufacturer's instructions.

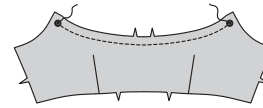


#### BODICE FRONT

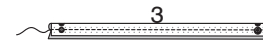
2. Stitch darts in **BODICE FRONT** (1). Press fold of darts toward center.



3. **STAYSTITCH** upper edge of bodice front between large dots.



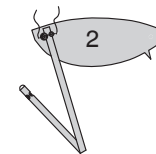
4. With **RIGHT** sides together, fold **SHOULDER STRAP** (3) in half lengthwise. Stitch in a 3/8" (1cm) seam, leaving ends open; trim seam.



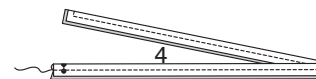
5. Turn **RIGHT** side out; press. Baste raw edges.



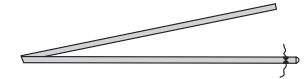
6. On outside, pin shoulder straps to interfaced **FRONT INSET** (2) sections, matching small and large dots, having raw edges even. Baste.



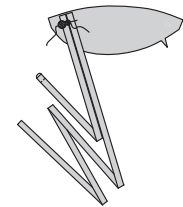
7. With **RIGHT** sides together, fold **TIE** (4) in half lengthwise. Stitch in a 3/8" (1cm) seam, leaving ends with dots open; trim seam.



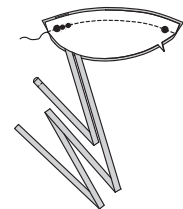
8. Turn **RIGHT** side out; press. Baste raw edges.



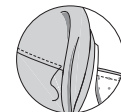
9. On outside, pin ties to interfaced front inset sections, matching small dots, having raw edges even. Baste.



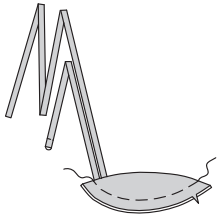
10. With **RIGHT** sides together, pin uninterfaced front inset sections to interfaced sections, matching notches and dots. Stitch unnotched edge; trim seam.



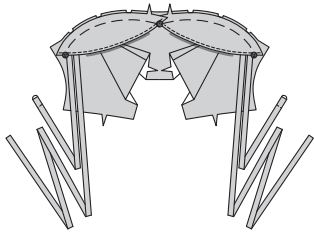
11. **UNDERSTITCH** uninterfaced front inset section.



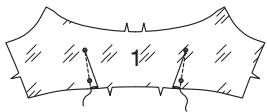
**12.** Turn RIGHT side out, turning strap and ties out; press. Baste raw edges.



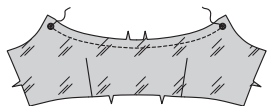
**13.** Pin front insets to bodice front, RIGHT sides together, matching notches and large dots, clipping bodice front where necessary. Baste.



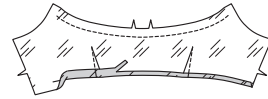
**14.** Stitch darts in bodice front LINING (1). Press fold of darts toward center.



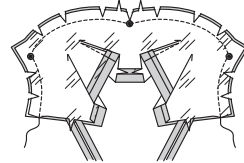
**15.** STAYSTITCH upper edge of lining between large dots.



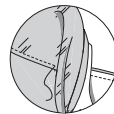
**16.** Press under 5/8" (1.5cm) on lower edge of lining. Trim pressed edge to 3/8" (1cm).



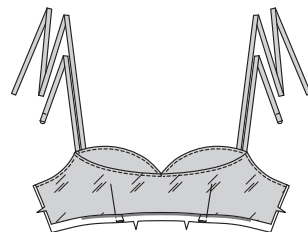
**17.** Pin lining to bodice front, RIGHT sides together (over front insets), matching centers and dots, clipping lining where necessary. Stitch upper edge and armhole; trim seam.



**18.** UNDERSTITCH lining as far as possible.



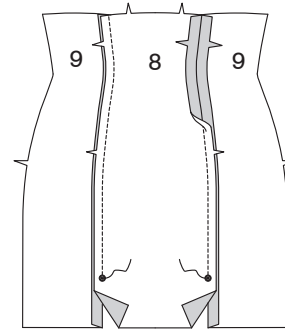
**19.** Turn lining to inside, turning insets up; press.



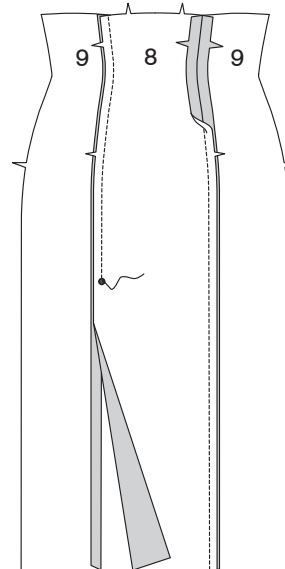
## SKIRT FRONT

**20.** With RIGHT sides together, pin SKIRT FRONT (8) to SKIRT SIDE FRONT (9) sections together at side front edges, matching dots.

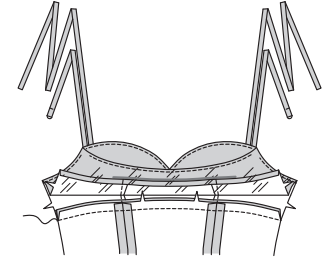
**For View A:** Stitch side front seams, leaving free below dots.



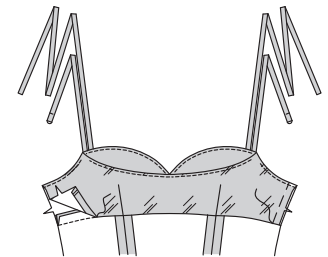
**21. For View B:** Stitch side front seams, leaving left side free below dots.



**22.** Pin skirt front to bodice front, RIGHT sides together, matching notches, centers and side front seams to bodice darts, keeping bodice lining free. Stitch; trim seam allowances toward bodice.

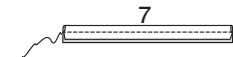


**23.** SLIPSTITCH pressed edge of bodice lining over seam. Baste side edges together.

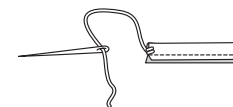


## BODICE BACK

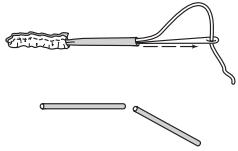
**24.** Fold LOOPS (7) in half lengthwise, with RIGHT sides together. Stitch in a 1/4" (6mm) seam, stretching loop while stitching.



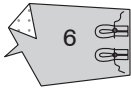
**25.** With a needle, attach a strong thread to one end of loop.



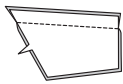
**26.** Draw needle eye forward, through fold, turning loop RIGHT side out. Cut loop into two equal sections.



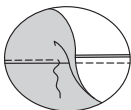
**27.** On OUTSIDE, baste loops to interfaced left BACK TAB (6) section, centering over small dots, having raw edges even. (Uninterfaced back tab sections will be used as facing.)



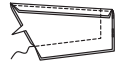
**28.** With RIGHT sides together, pin left back tab FACING (6) section to back tab (over loops). Stitch upper edge; trim seam. (Save remaining back tab sections.)



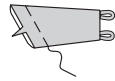
**29.** UNDERSTITCH facing.



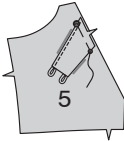
**30.** With RIGHT sides together, pin facing to back tab again. Stitch, leaving notched edge free; trim seams.



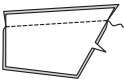
**31.** Turn right side out, turning loops out; press. Baste raw edges together.



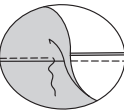
**32.** On outside, pin back tab to left BODICE BACK (5), matching notches and dots; baste.



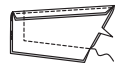
**33.** With RIGHT sides together, pin remaining back tab sections. Stitch upper edge; trim seam.



**34.** UNDERSTITCH facing.



**35.** With RIGHT sides together, pin facing to back tab again. Stitch, leaving notched edge free; trim seams.



**36.** Turn right side out; press. Baste raw edges together.



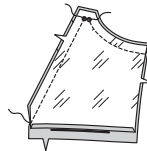
**37.** On outside, pin back tab to right bodice back, matching notches and dots; baste.



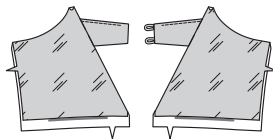
**38.** Press under 5/8" (1.5cm) on lower edge of bodice back LINING (5). Trim pressed edge to 3/8" (1cm).



**39.** Pin lining to bodice back, RIGHT sides together, matching dots. Stitch armhole and slanted back edge, leaving upper edge free between small dots. Trim seams.

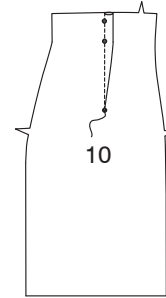


**40.** Turn lining to inside, turning tabs out; press.

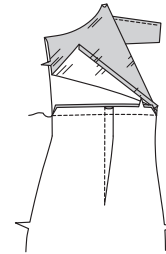


## SKIRT BACK

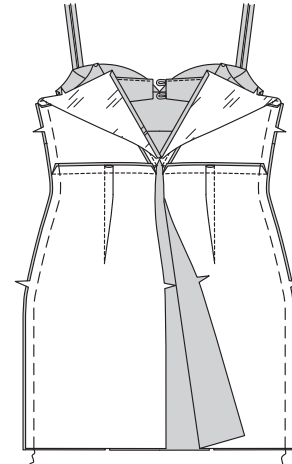
**41.** Stitch dart in SKIRT BACK (10). Press fold of dart toward center.



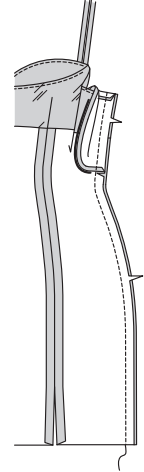
**42.** Open out bodice back lining. Pin skirt back to lower edge of bodice back, matching notches and centers; stitch. Press seams toward bodice.



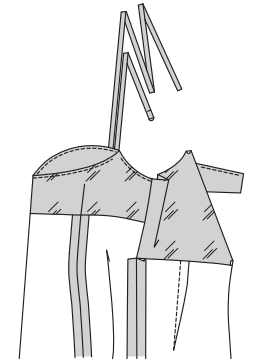
**43.** Keeping back lining free, pin bodice back and skirt to bodice front and skirt at sides; baste.



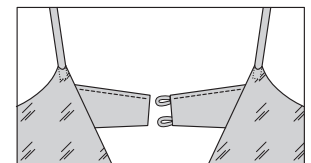
**44.** Turn bodice back lining to outside (over front). Stitch lining and side seams together in one continuous seam.



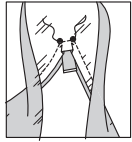
**45.** Turn back lining to inside again; press. Clip skirt side seam allowance below lining, as shown. Press, pressing lining side seam toward back and side seams open below clip.



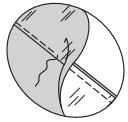
**46.** Insert straps through openings in bodice back, matching dots; baste.



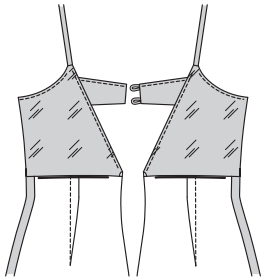
**47.** Open out back lining. On inside, stitch bodice back between dots, catching in straps.



**48. UNDERSTITCH** back lining as far as possible.

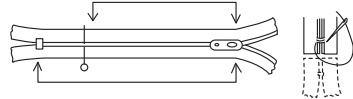


**49.** Turn lining down; press.

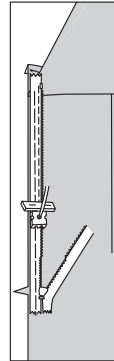


### ZIPPER

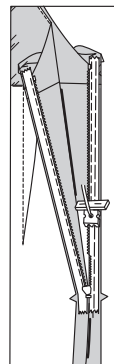
**50. NOTE:** It may be necessary to shorten zipper. To make new zipper stop, place zipper along opening edge (with pull tab 1/8" (3mm) below seamline). Mark placement of new zipper stop. Whipstitch across teeth at marking. Cut zipper 3/4" (2cm) below the new stop. Open the zipper and press the tape flat.



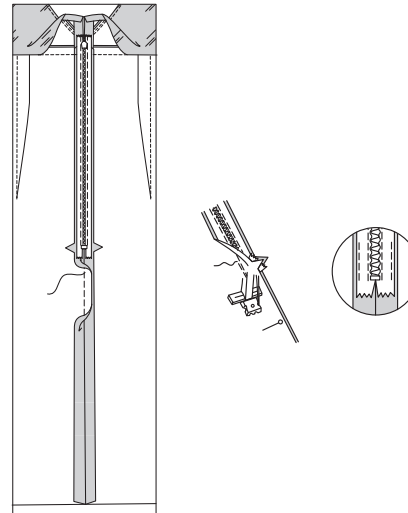
**51.** Keep the free upper edges of back lining out of the way. On OUTSIDE, pin RIGHT side of the zipper face down on the RIGHT side of the zipper opening. Have the coil along the seam line, the tape within the seam allowance and the top stop 1/8" (3mm) below upper edge, as shown. Hand-baste along center of tape. Position zipper foot over coil. Stitch along tape to notch. Back-stitch to reinforce.



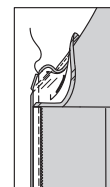
**52.** Pin the remaining half of the zipper to the LEFT side of the zipper opening in the same manner. Hand-baste along the center of tape. Position zipper foot at the top of the zipper with LEFT groove over the coil. Stitch along tape to the notch. Back-stitch to reinforce.



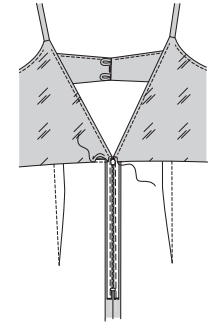
**53.** Close zipper and check that it is invisible from the OUTSIDE. Pull the free ends of the zipper tape away from the seam allowance. Pin remaining center back seam together below zipper. Position zipper foot all the way to the LEFT so the needle goes down through the outer notch of the foot. Start stitching seam 1/4" (6mm) above the lowest stitch and slightly to the LEFT. Stitch remainder of seam connecting to previous stitching. If you prefer, open out each seam allowance at end of zipper and stitch tape to seam allowance.



**54.** Open out back opening edges of dress, rolling the zipper teeth away from the opening edge. Turn back lining to OUTSIDE. With RIGHT sides together, pin back edges of dress and lining together. Stitch across lining 1/2" (1.3cm) from back edges, keeping zipper teeth free. Trim corner. Do not trim center back edges.



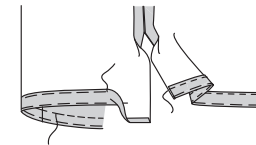
**55.** Turn bodice lining to INSIDE again; press. **SLIPSTITCH** pressed edges of lining over seams.



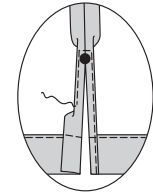
### FINISHING

#### HEMS

**56.** Turn up a 1-1/4" (3.2cm) hem on lower edge of dress. Baste close to fold. Turn in 1/4" (6mm) along raw edge; press. Baste close to pressed edge. **TOPSTITCH** hem along upper basting.

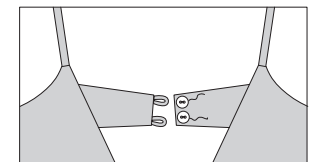


**57.** Finish side opening edges below large dots with a 5/8" (1.5cm) **NARROW HEM**, squaring stitching above large dots.



#### BUTTONS

**58.** Bring back edges of tabs together. On outside, sew buttons to right tab, opposite loops.





# Congrats!

You've completed your sewing adventure!


---

## SHARE YOUR look!



Post your pattern and tag us at  
@knowmepatterns and use #knowmepatterns  
for a chance to be featured on our social media!

Look for more Know Me PDF patterns at [SomethingDelightful.com/know-me/](https://www.somethingdelightful.com/know-me/)

 1-800-255-2762

© 2023 KnowMe® an IG Design Group Americas, Inc. brand. | All Rights Reserved.  
Sold for individual home use only and not for commercial or manufacturing purposes.