

@lydianaomistudio



>> MISSES' DRESS
SKILL LEVEL: AVERAGE

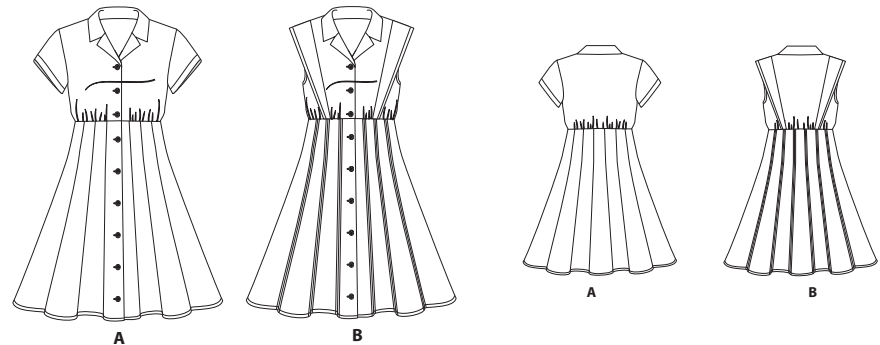
PDF
↓
PDF PATTERNS

THINGS YOU NEED:

> **A,B:** Nine 5/8" (1.5cm) buttons. **Also for B:** One pkg. of 1/2" (1.3cm) single fold bias tape.

SUGGESTED FABRICS:

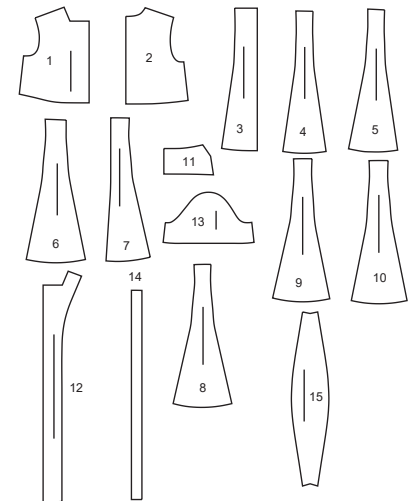
> Chambray, Cotton Blends, Crinkle Cotton, Linen Blends, Poplin, Seersucker. **Interfacing:** Lightweight Fusible.



Your printed tile pieces should be assembled before you move on to this step!

PIECES (15)

- 1 BODICE FRONT - A,B
- 2 BODICE BACK - A,B
- 3 SKIRT FRONT - A,B
- 4 SKIRT MIDDLE FRONT - A,B
- 5 SKIRT MIDDLE SIDE FRONT - A,B
- 6 SKIRT SIDE FRONT - A,B
- 7 SKIRT BACK - A,B
- 8 SKIRT MIDDLE BACK - A,B
- 9 SKIRT MIDDLE SIDE BACK - A,B
- 10 SKIRT SIDE BACK - A,B
- 11 COLLAR - A,B
- 12 FRONT FACING - A,B
- 13 SLEEVE - A
- 14 BUTTONHOLE GUIDE - A,B
- 15 FLANGE - B



YARDAGE CHARTS

SIZES	8	10	12	14	16	18	20	22	24	26	
INTERFACING A,B- 20" (51cm) - 1¼ yds. (1.2m)											
DRESS A											
45"*	3½	3⅝	3¾	4⅛	4⅛	4⅛	4⅛	4⅛	4⅛	4⅛	yds.
60"*	2⅜	2⅝	2⅝	2¾	3⅛	3⅜	3½	3½	3½	3½	"
115cm*	3.3	3.4	3.5	3.7	3.7	3.7	3.8	3.8	3.8	3.8	m.
150cm*	2.2	2.4	2.4	2.6	2.9	3.1	3.2	3.2	3.2	3.2	"
DRESS B											
45"*	4	4	4	4	4⅛	4⅛	4⅛	4⅛	4⅛	4⅛	yds.
60"*	2¾	2¾	2¾	2¾	2¾	2⅞	3¼	3⅜	3⅜	3⅜	"
115cm*	3.7	3.7	3.7	3.7	3.8	3.8	3.8	3.8	3.8	3.8	m.
150cm*	2.6	2.6	2.6	2.6	2.6	2.7	3.0	3.0	3.1	3.1	"

FINISHED GARMENT MEASUREMENTS

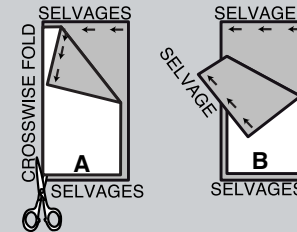
SIZES	8	10	12	14	16	18	20	22	24	26	
A,B BUST	36	37	38½	40½	42½	44½	46½	48½	50½	52½	in.
	91	94	98	103	108	113	118	123	128	133	cm.
A,B WAIST	26	27	28½	30½	32½	34½	36½	38½	40½	42½	in.
	66	69	72	77	83	88	93	98	103	108	cm.
A,B HIP	46	47	48½	50½	52½	54½	56½	58½	60½	62½	in.
	117	119	123	128	133	138	144	149	154	159	cm.
WIDTH, LOWER EDGE											
DRESS A,B	109½	110½	112	114	116	118	120	122	124	126	in.
	278	281	284	290	295	300	305	310	315	320	cm.
FINISHED BACK LENGTH FROM BASE OF NECK											
DRESS A,B	35¾	36	36¼	36½	36¾	37	37¼	37½	37¾	38	in.
	91	91	92	93	93	94	95	95	96	97	cm.

BODY MEASUREMENTS

SIZES	8	10	12	14	16	18	20	22	24	26	
BUST	31½	32½	34	36	38	40	42	44	46	48	in.
	80	83	87	92	97	102	107	112	117	122	cm.
WAIST	24	25	26½	28	30	32	34	37	39	41	in.
	61	64	67	71	76	81	87	94	99	104	cm.
HIP-9" (23CM) BELOW WAIST	33½	34½	36	38	40	42	44	46	48	50	in.
	85	88	92	97	102	107	112	117	122	127	cm.
BACK-NECK TO WAIST	15¾	16	16¼	16½	16¾	17	17¼	17½	17¾	18	in.
	40	40.5	41.5	42	42.5	43	44	44.5	45	46	cm.

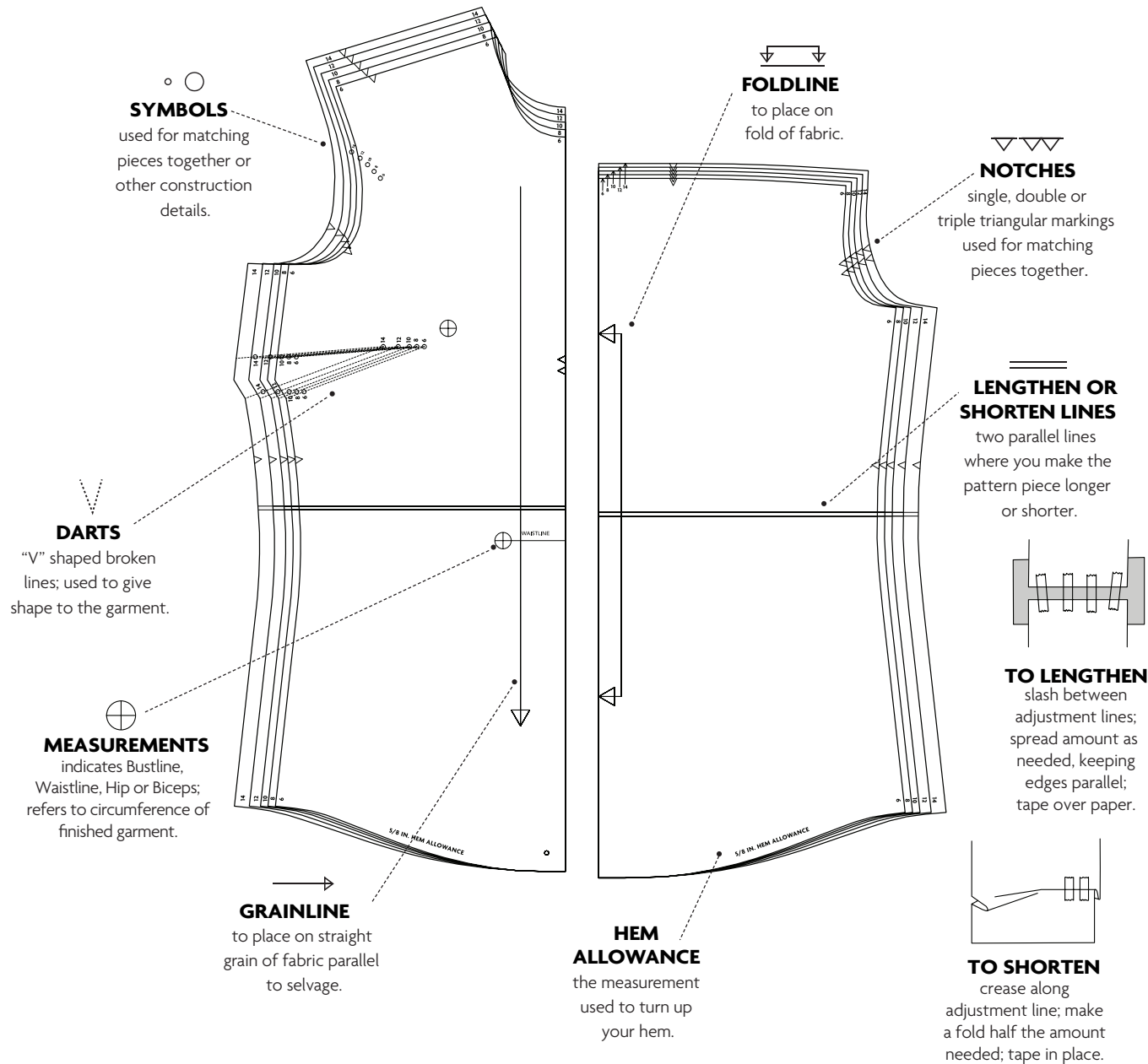
CUTTING AND MARKING

- > **SHRINK FABRIC** if not labeled pre-shrunk. Press.
- > **CIRCLE LAYOUT** for View, Size, Fabric Width.
- > Use **WITH NAP** layout for fabrics with one-way designs, nap, pile or surface shading. Because most knits have surface shading, a with nap layout is used.
- > For **DOUBLE THICKNESS (WITH FOLD)**, fold fabric with right sides together.
- > ***DOUBLE THICKNESS (WITHOUT FOLD)**, for fabrics with nap, fold fabric crosswise, right sides together. Mark as shown. Cut along crosswise fold of fabric (A). Turn upper layer 180° so arrows go in same direction and place over lower layer, right sides together (B).
- > For **SINGLE THICKNESS**, place fabric right side up. (For Fur Pile fabrics, place pile side down.)



- > Before **CUTTING**, place all pieces on fabric according to layout. Pin.
(Layouts show approximate position of pattern pieces; position may vary according to your pattern size.)
- > ★ Cut other pieces first, allowing enough fabric to cut this piece. Open fabric. Cut piece on single layer of fabric with piece face up on right side of fabric.
- > Cut accurately, cutting notches outward.
- > Before removing pattern, **TRANSFER MARKINGS** and lines of construction to **WRONG SIDE** of fabric, using Pin and Chalk Pencil method or Tracing Paper and Dressmaker Wheel. Markings needed on right side of fabric should be thread traced.
NOTE: Broken-line boxes (a! b! c!) in layouts represent pieces cut by measurements provided.
- > Prewash your fabric using a method that's suitable for the fabric type.
- > Fold fabric with right sides together, matching **SELVAGES**.
- > Pin your pattern pieces to the fabric as shown below and cut them out using a sharp pair of dressmaker's shears.

PATTERN MARKINGS

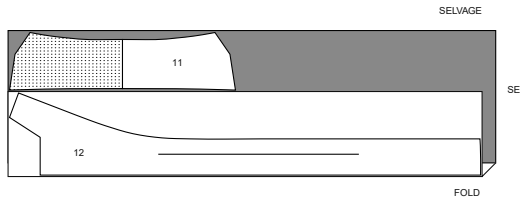


CUTTING LAYOUTS

INTERFACING A,B

pieces 11 12

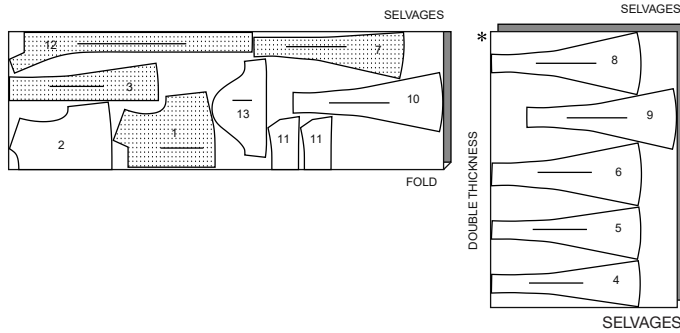
20" (51cm)
all sizes



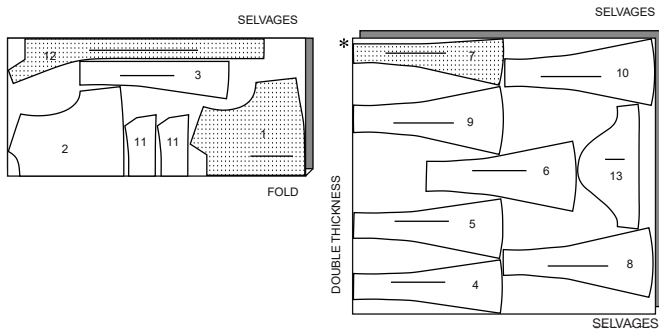
DRESS A

pieces 1 2 3 4 5 6 7 8 9 10 11 12 13

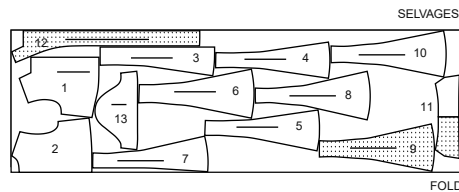
45" (115cm)
with nap
sizes 8 10 12



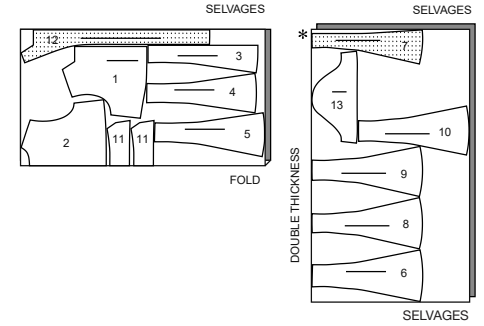
45" (115cm)
with nap
sizes 14 16 18 20
22 24 26



60" (150cm)
with nap
sizes 8 10 12 14



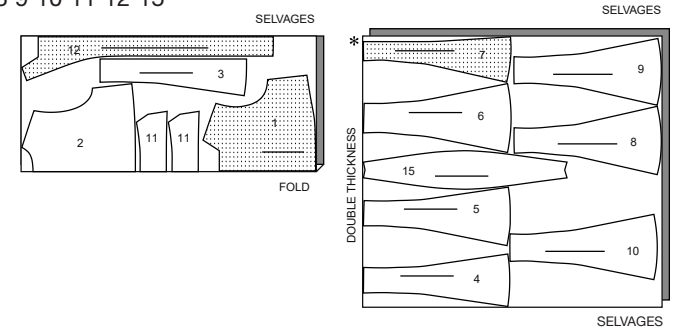
60" (150cm)
with nap
sizes 16 18 20 22 24 26



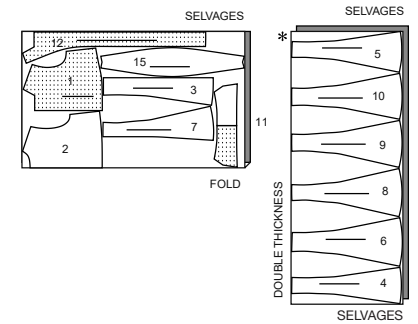
DRESS B

pieces 1 2 3 4 5 6 7 8 9 10 11 12 15

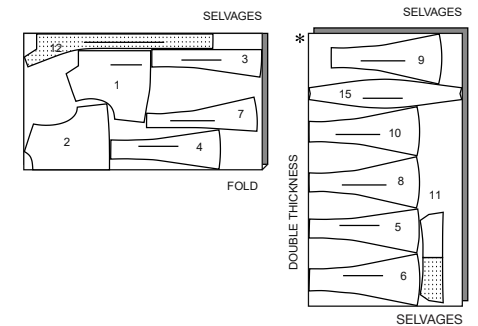
45" (115cm)
with nap
all sizes



60" (150cm)
with nap
sizes 8 10 12 14 16 18



60" (150cm)
with nap
sizes 20 22 24 26



PATTERN PIECES WILL BE IDENTIFIED BY NUMBERS THE FIRST TIME THEY ARE USED.

SEWING INFORMATION

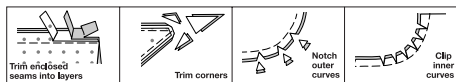
$\frac{5}{8}$ " (1.5cm) SEAM ALLOWANCES ARE INCLUDED, (unless otherwise indicated)

ILLUSTRATION SHADING KEY

Right Side	Wrong Side	Interfacing	Lining	Underlining

Pin or baste seams, right side together, matching notches. Fit garment before stitching major seams.

Press seam allowances flat; then open unless otherwise stated. Clip where necessary so they lie flat.



GLOSSARY

Sewing terms appearing in **BOLD TYPE** in Sewing Instructions are explained below.

EASESTITCH – Stitch along seamline, using long machine stitches. Pull thread ends when adjusting to fit.

EDGESTITCH – Stitch close to finished edge or seam.

GATHER – Stitch along seamline and again $\frac{1}{4}$ " (6mm) away in seam allowance, using long machine stitches. Pull thread ends when adjusting to fit.

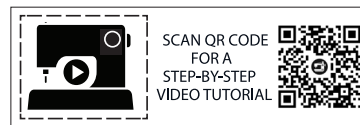
NARROW HEM – Turn in seam allowance, turning under raw edge; press. Stitch close to pressed edge.

REINFORCE – Stitch along seam line where indicated in sewing instructions, using small machine stitches.

STAYSTITCH – Stitch $\frac{1}{8}$ " (3mm) from seamline in seam allowance [usually $\frac{1}{2}$ " (1.3cm) from raw edge.

TOPSTITCH – On outside, stitch $\frac{1}{4}$ " (6mm) from edge, seam, or previous stitching.

UNDERSTITCH – Open out facing or underside of garment; stitch to seam allowance close to seam.



@lydianaomistudio

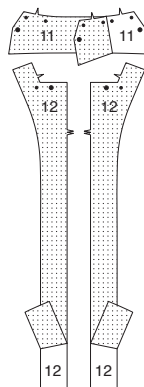
SEWING DIRECTIONS

DRESS A, B

NOTE: Under each subheading, the first view will be illustrated unless otherwise indicated.

INTERFACING

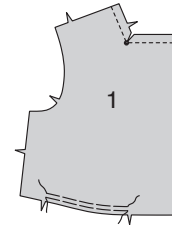
1. Pin interfacing to wrong side of COLLAR (11) and FRONT FACING (12). Fuse, following manufacturer's instructions.



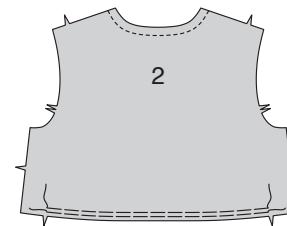
BODICE

NOTE: FOR VIEW B – Trim $\frac{1}{4}$ " (6mm) from armhole edges of BODICE FRONT (1) and BODICE BACK (2) before stitching.

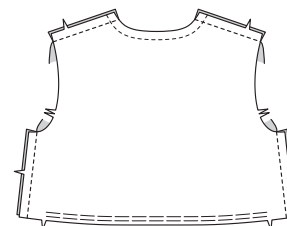
2. **STAYSTITCH** upper edge of BODICE FRONT (1) sections. Clip neck edge of bodice to small dot. **GATHER** lower edge between the notches.



3. **STAYSTITCH** neck edge of BODICE BACK (2). **GATHER** lower edge between the notches.

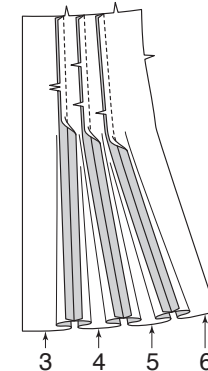


4. Stitch bodice front to bodice back at shoulder and side edges.

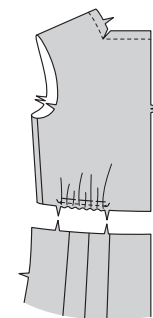


SKIRT

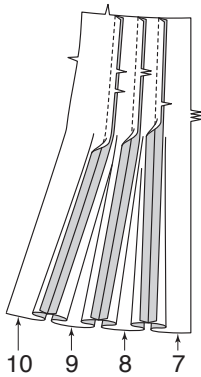
5. With right sides together and raw edges even, pin SKIRT FRONT (3) to SKIRT MIDDLE FRONT (4), matching notches. Stitch. Stitch skirt middle front to SKIRT MIDDLE SIDE FRONT (5), matching notches. Stitch skirt middle side front to SKIRT SIDE FRONT (6), matching notches. Press seams open.



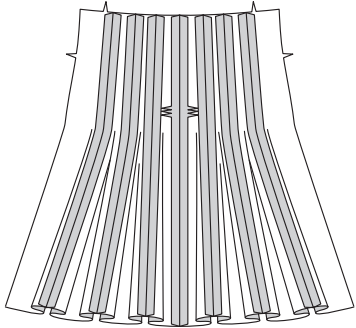
6. Measure length of skirt front group at upper seamline between the notches. Pull up gathering threads on bodice front to match that length and tie securely. Distribute gathers evenly. Baste in place along seamline.



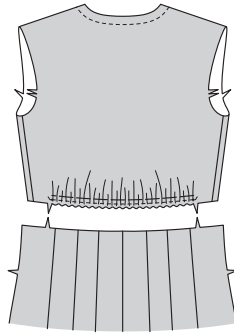
7. With right sides together and raw edges even, pin SKIRT BACK (7) to SKIRT MIDDLE BACK (8), matching notches. Stitch. Stitch skirt middle back to SKIRT MIDDLE SIDE BACK (9), matching notches. Stitch skirt middle side back to SKIRT SIDE BACK (10), matching notches. Press seams open.



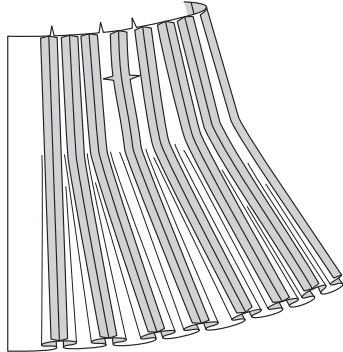
8. Stitch center back seam of skirt. Press seam open.



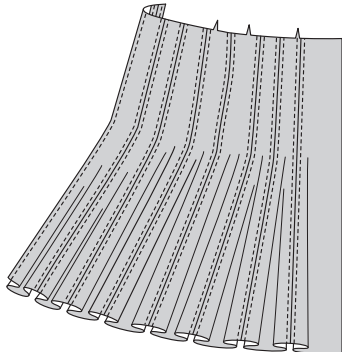
9. Measure length of skirt back group at upper seamline between the notches. Pull up gathering threads on bodice back to match that length and tie securely. Distribute gathers evenly. Baste in place along seamline.



10. Stitch skirt front to skirt back at side seams.



11. FOR VIEW B – TOPSTITCH each side of skirt seams.

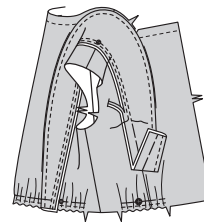


FLANGE B

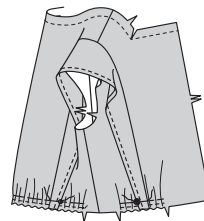
12. Fold FLANGE (15) along foldline with wrong sides together; press. Baste on seam line. **TOPSTITCH** along fold.



13. With right sides together, pin flange to bodice front and back, placing basting on placement line with flange extending toward centers, and small dot at shoulder seam. Stitch along basting, and again 1/4" (6mm) from seamline with the seam allowance. Trim flange close to second line of stitching.

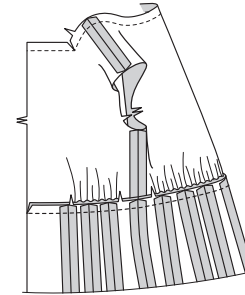


14. Turn flange to outside, matching small and large dots. Baste to lower edges of bodice. If you prefer, **TOPSTITCH** flange away from seam.

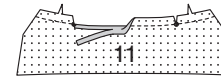


CONTINUE AS FOLLOWS FOR BOTH VIEWS

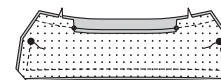
15. With right sides together and raw edges even, pin bodice to skirt, matching centers, seams, and notches. Stitch. Press seam toward bodice.



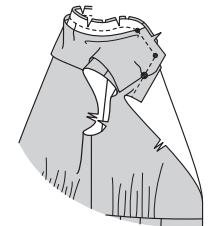
16. Machine-stitch 5/8" (1.5cm) from notched edge of interfaced COLLAR (11) section. Clip notched edge of collar to stitching at inner small dots. Press under 5/8" (1.5cm) on raw edge between clips. Trim to 1/4" (6mm). Remaining collar section will be the facing.



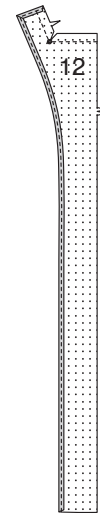
17. With right sides together, stitch facing to collar, leaving notched edge open between the large dots. Backstitching at large dots to reinforce the seam. Trim seam and corners.



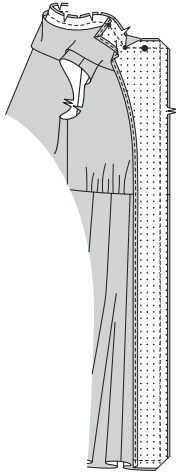
18. UNDERSTITCH the facing. Turn collar; press. Clip back neck edge of bodice to staystitching along curves. With right sides together, pin collar to bodice, matching centers, notches, small and large dots, placing inner small dot at shoulder seam. Stitch neck edge from center back to large dots, pivoting with needle in fabric at inner corner. Trim seam. Clip curves between the shoulder seams. Press seam toward collar.



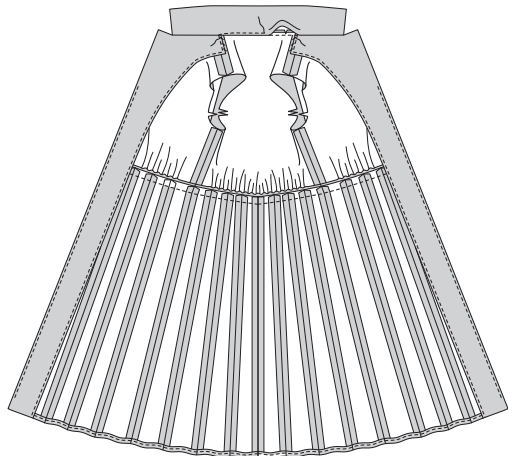
19. To finish unnotched, long edge and shoulder edge of FRONT FACING (12), press under raw edge 1/4" (6mm). **EDGESTITCH** pressed edge. **REINFORCE** neck edge. Clip neck edge of front facing to inner small dot.



20. On outside, pin front facing to dress and collar, matching small dots, large dots, and notches. Stitch upper lapel edge and neck edge to small dot (at shoulder). Be careful not to catch in pressed edge of collar. Stitch front facing to front and lower edge of dress. Trim seam and corners.

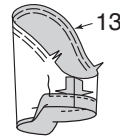


21. UNDERSTITCH front facing from 5" (12.5cm) below lapel to lower edge, as far as possible. Turn facing to inside; press, pressing up hem allowance. **NARROW HEM** lower edge of dress. On inside, pin pressed edge of collar over neck seam. Stitch collar close to seam. To keep the facing in place, tack facing to shoulder seam allowances by hand or with a small piece of fusible web.

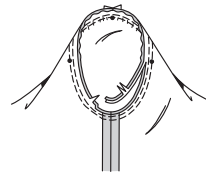


SLEEVE A

22. EASESTITCH top of SLEEVE (13) between notches. Stitch underarm seam. Press up hem allowance on lower edge of sleeve. Turn raw edge under 1/4" (6mm). Press. Stitch close to inner pressed edge.



23. Turn sleeve right side out. Hold dress wrong side out with armhole toward you. With right sides together, pin sleeve to armhole edge with center small dot at shoulder seam, matching underarm seams, notches and remaining small dots. Pull up ease stitches to fit. To distribute fullness evenly, slide fabric along bobbin threads until there are no puckers or tucks on the seam line. Baste. Stitch. Stitch again 1/8" (3mm) from first stitching. Trim seam below notches close to stitching. Press only the seam allowance, shrinking out fullness.



ARMHOLE B

24. With right sides together, pin tape to armhole edge having raw edges even, turning under and lapping one end at side seam. Stitch in a 3/8" (1cm) seam. Trim seam; clip curves.

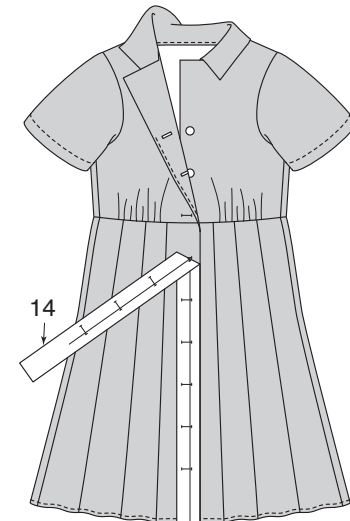


25. UNDERSTITCH the tape. Turn tape to inside; press. Baste close to inner edge of tape. On outside, top-stitch as basted.



FINISHING

26. To mark buttonholes in right front, place **BUTTONHOLE GUIDE** (14) along finished edge of dress, placing top edge at upper edge of lapel, matching centers, as shown. Transfer buttonhole markings to garment. Make buttonholes at markings. Lap right front over left, matching centers. Sew buttons under buttonholes.





Congrats!


You've completed your sewing adventure!

SHARE YOUR look!



Post your pattern and tag us at
@knowmepatterns and use #knowmepatterns
for a chance to be featured on our social media!

Look for more Know Me PDF patterns at [SomethingDelightful.com/know-me/](https://www.somethingdelightful.com/know-me/)

 1-800-255-2762

© 2023 KnowMe® an IG Design Group Americas, Inc. brand. | All Rights Reserved.
Sold for individual home use only and not for commercial or manufacturing purposes.