

@duana_m_chandler



>> MISSES' DRESS AND ROMPER
 SKILL LEVEL: AVERAGE

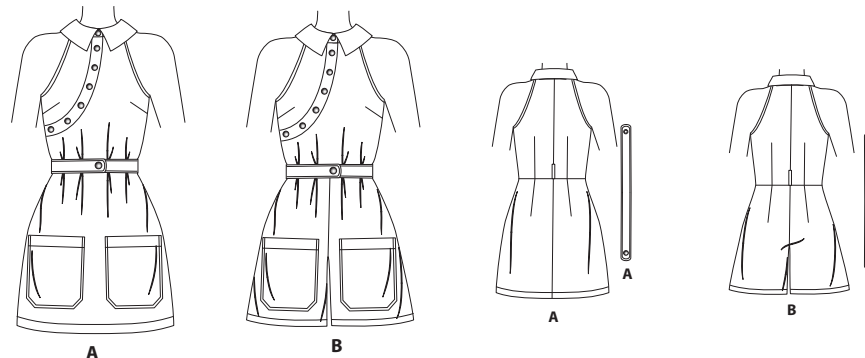


THINGS YOU NEED:

- > **A,B:** Eight 5/8" (1.5cm) heavy duty snaps, 14" (36cm) invisible zipper (adjust to fit), one pkg. of 1/2" (1.3cm) single fold bias tape.

SUGGESTED FABRICS:

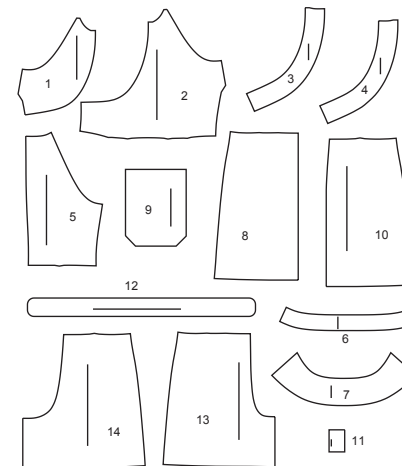
- > Chambray, Cotton Blends, Denim, Linen Blends, Stretch Wovens.
Contrast also in: Soft Faux Leather, Microsuede. **Interfacing:** Lightweight Fusible.



Your printed tile pieces should be assembled before you move on to this step!

PIECES (14)

- 1 RIGHT BODICE FRONT - A,B
- 2 LEFT BODICE FRONT - A,B
- 3 RIGHT FRONT BAND - A,B
- 4 LEFT FRONT BAND - A,B
- 5 BODICE BACK - A,B
- 6 COLLAR BAND - A,B
- 7 COLLAR - A,B
- 8 SKIRT FRONT - A
- 9 POCKET - A,B
- 10 SKIRT BACK - A
- 11 CARRIER - A,B
- 12 BELT - A,B
- 13 SHORTS FRONT - B
- 14 SHORTS BACK - B



YARDAGE CHART

SIZES	8	10	12	14	16	18	20	22	24	26	
INTERFACING A,B											
20"	1	1	1	1 $\frac{1}{8}$	1 $\frac{1}{8}$	1 $\frac{1}{4}$	1 $\frac{1}{4}$	1 $\frac{3}{8}$	1 $\frac{3}{8}$	1 $\frac{1}{2}$	yds.
51cm	1.0	1.0	1.0	1.1	1.1	1.2	1.2	1.3	1.3	1.3	m.
DRESS A											
45"*	2	2	2	2 $\frac{1}{4}$	2 $\frac{1}{2}$	2 $\frac{1}{2}$	2 $\frac{1}{2}$	2 $\frac{5}{8}$	2 $\frac{5}{8}$	2 $\frac{3}{4}$	yds.
60"*	1 $\frac{3}{4}$	1 $\frac{3}{4}$	1 $\frac{3}{4}$	1 $\frac{3}{4}$	1 $\frac{7}{8}$	1 $\frac{7}{8}$	1 $\frac{7}{8}$	1 $\frac{7}{8}$	2	2	"
115cm*	1.9	1.9	1.9	2.1	2.3	2.3	2.3	2.4	2.4	2.6	m.
150cm*	1.5	1.6	1.6	1.6	1.6	1.8	1.8	1.8	1.9	1.9	"
CONTRAST A (BELT)											
45", 60"*	1	1	1	1 $\frac{1}{8}$	1 $\frac{1}{8}$	1 $\frac{1}{4}$	1 $\frac{1}{4}$	1 $\frac{3}{8}$	1 $\frac{3}{8}$	1 $\frac{1}{2}$	yds.
115cm, 150cm*	1.0	1.0	1.0	1.1	1.1	1.2	1.2	1.3	1.3	1.3	m.
ROMPER B											
45"*	2 $\frac{1}{4}$	2 $\frac{1}{4}$	2 $\frac{3}{8}$	2 $\frac{5}{8}$	2 $\frac{5}{8}$	2 $\frac{3}{4}$	2 $\frac{7}{8}$	2 $\frac{7}{8}$	2 $\frac{7}{8}$	3	yds.
60"*	1 $\frac{7}{8}$	2	2	2	2 $\frac{1}{8}$	2 $\frac{1}{8}$	2 $\frac{3}{8}$	2 $\frac{3}{8}$	2 $\frac{3}{8}$	2 $\frac{1}{2}$	"
115cm*	2.1	2.1	2.2	2.4	2.4	2.6	2.7	2.7	2.7	2.7	m.
150cm*	1.8	1.9	1.9	1.9	1.9	2.0	2.1	2.2	2.2	2.3	"

FINISHED GARMENT MEASUREMENTS

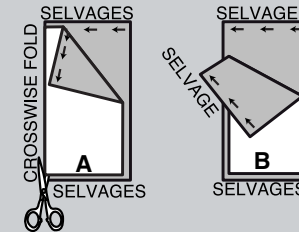
SIZES	8	10	12	14	16	18	20	22	24	26	
A,B BUST	35	36	37½	39½	41½	43½	45½	47½	49½	51½	in.
	89	91	95	100	105	110	116	121	126	131	cm.
A,B WAIST	26	27	28½	30½	32½	34½	36½	38½	40½	42½	in.
	66	69	72	77	83	88	93	98	103	108	cm.
A HIP	38	39	40½	42½	44½	46½	48½	50½	52½	54½	in.
	97	99	103	108	113	118	123	128	133	138	cm.
B HIP	40	41	42½	44½	46½	48½	50½	52½	54½	56½	in.
	102	104	108	113	118	123	128	133	138	144	cm.
WIDTH, EACH LEG											
ROMPER B	28¼	29	30	31¼	32½	33¾	35	36¼	37½	38¾	in.
	72	74	76	79	83	86	89	92	95	98	cm.
WIDTH, LOWER EDGE											
DRESS A	41	42	43½	45½	47½	49½	51½	53½	55½	57½	in.
	104	107	110	116	121	126	131	136	141	146	cm.
FINISHED BACK LENGTH FROM BASE OF NECK											
DRESS A	33¾	34	34¼	34½	34¾	35	35¼	35½	35¾	36	in.
	86	86	87	88	88	89	90	90	91	91	cm.
ROMPER B	31½	32	32½	33	33½	34	34½	35	35½	36	in.
	80	81	83	84	85	86	88	89	90	91	cm.

BODY MEASUREMENTS

SIZES	8	10	12	14	16	18	20	22	24	26	
BUST	31½	32½	34	36	38	40	42	44	46	48	in.
	80	83	87	92	97	102	107	112	117	122	cm.
WAIST	24	25	26½	28	30	32	34	37	39	41	in.
	61	64	67	71	76	81	87	94	99	104	cm.
HIP-9" (23CM) BELOW WAIST	33½	34½	36	38	40	42	44	46	48	50	in.
	85	88	92	97	102	107	112	117	122	127	cm.
BACK-NECK TO WAIST	15¾	16	16¼	16½	16¾	17	17¼	17½	17¾	18	in.
	40	40.5	41.5	42	42.5	43	44	44.5	45	46	cm.

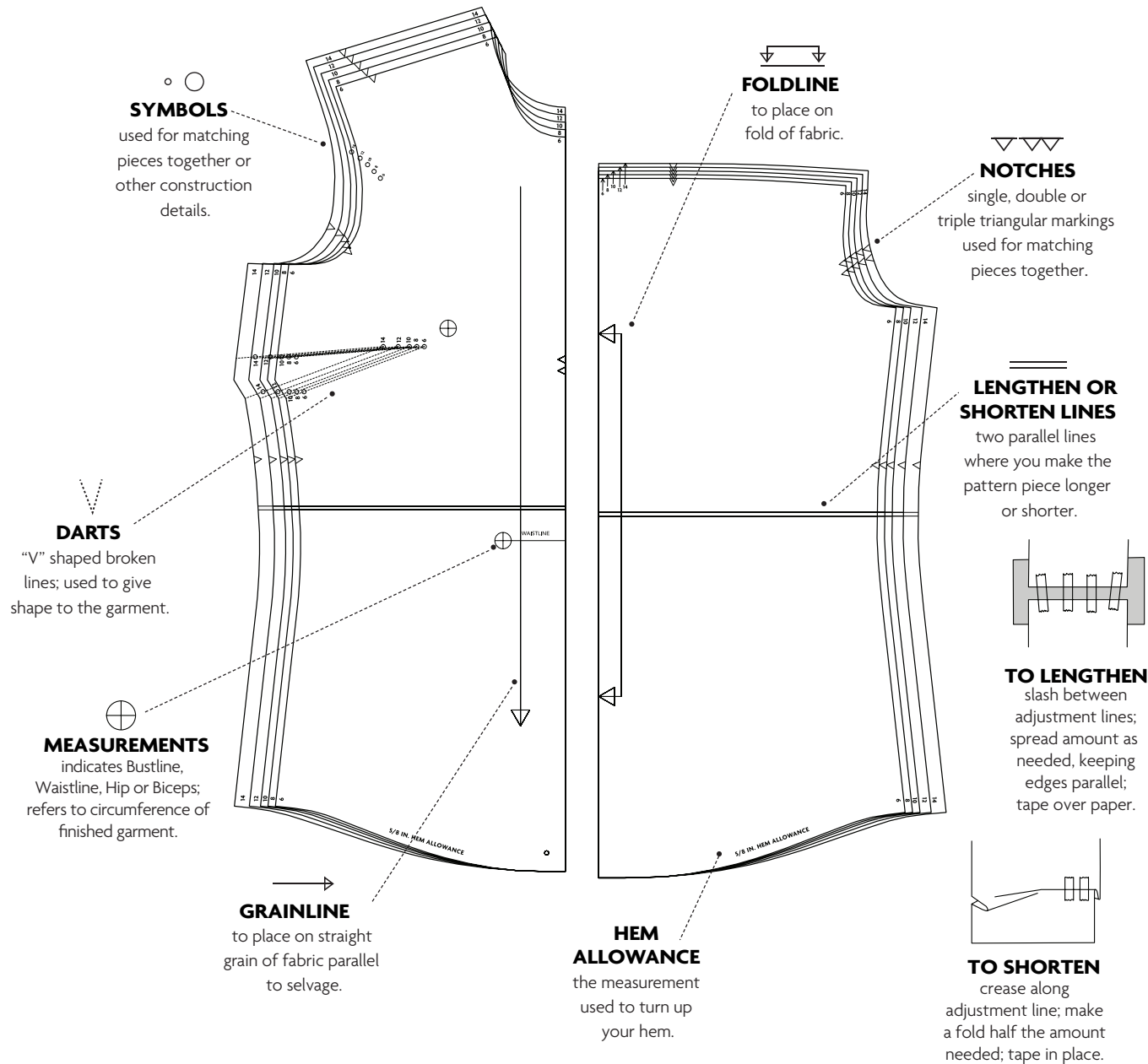
CUTTING AND MARKING

- > **SHRINK FABRIC** if not labeled pre-shrunk. Press.
- > **CIRCLE LAYOUT** for View, Size, Fabric Width.
- > Use **WITH NAP** layout for fabrics with one-way designs, nap, pile or surface shading. Because most knits have surface shading, a with nap layout is used.
- > For **DOUBLE THICKNESS (WITH FOLD)**, fold fabric with right sides together.
- > ***DOUBLE THICKNESS (WITHOUT FOLD)**, for fabrics with nap, fold fabric crosswise, right sides together. Mark as shown. Cut along crosswise fold of fabric (A). Turn upper layer 180° so arrows go in same direction and place over lower layer, right sides together (B).
- > For **SINGLE THICKNESS**, place fabric right side up. (For Fur Pile fabrics, place pile side down.)



- > Before **CUTTING**, place all pieces on fabric according to layout. Pin.
(Layouts show approximate position of pattern pieces; position may vary according to your pattern size.)
- > ★ Cut other pieces first, allowing enough fabric to cut this piece. Open fabric. Cut piece on single layer of fabric with piece face up on right side of fabric.
- > Cut accurately, cutting notches outward.
- > Before removing pattern, **TRANSFER MARKINGS** and lines of construction to **WRONG SIDE** of fabric, using Pin and Chalk Pencil method or Tracing Paper and Dressmaker Wheel. Markings needed on right side of fabric should be thread traced.
NOTE: Broken-line boxes (a! b! c!) in layouts represent pieces cut by measurements provided.
- > Prewash your fabric using a method that's suitable for the fabric type.
- > Fold fabric with right sides together, matching **SELVAGES**.
- > Pin your pattern pieces to the fabric as shown below and cut them out using a sharp pair of dressmaker's shears.

PATTERN MARKINGS

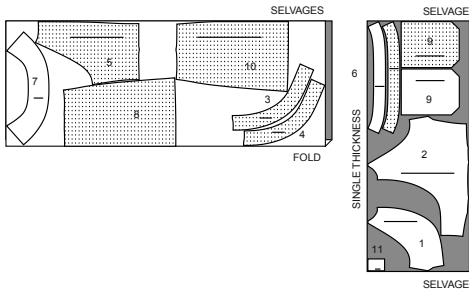


CUTTING LAYOUTS

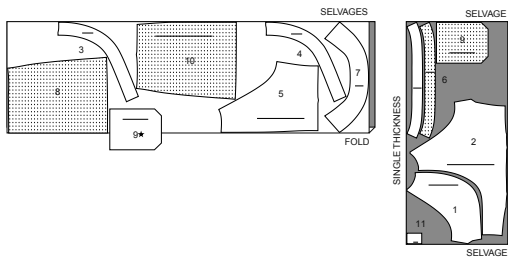
DRESS A

use pieces: 1 2 3 4 5 6 7 8 9 10 11

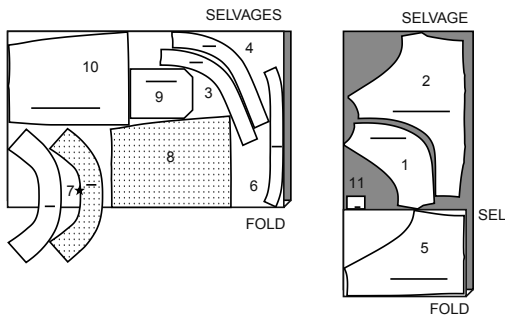
45" (115 cm)
with nap
sizes 8 10 12 14



45" (115 cm)
with nap
sizes 16 18 20 22 24 26



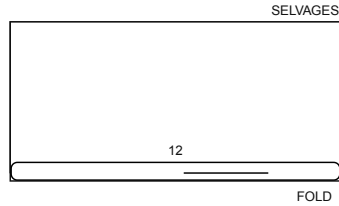
60" (150 cm)
with nap
all sizes



CONTRAST A

use piece: 12

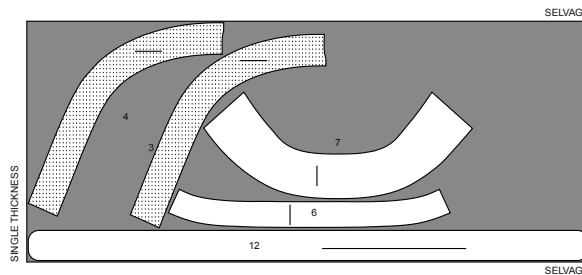
45" (115 cm)*
with nap
all sizes



INTERFACING A,B

use pieces: 3 4 6 7 12

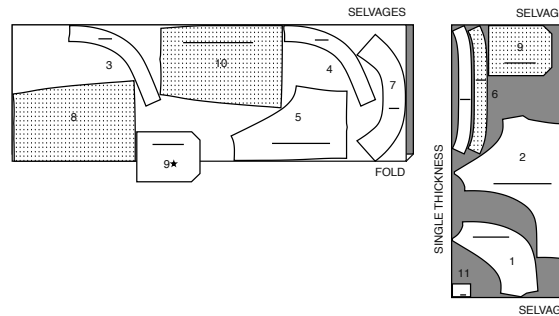
20" (51 cm)
without nap
all sizes



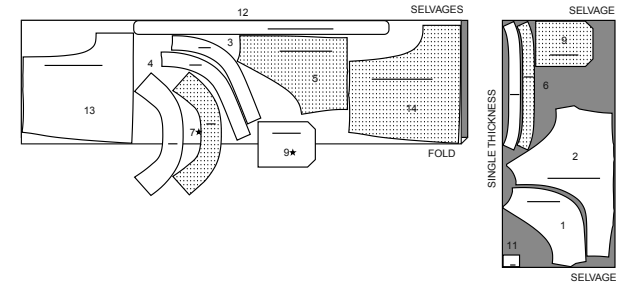
ROMPER B

use pieces: 1 2 3 4 5 6 7 9 11 12 13 14

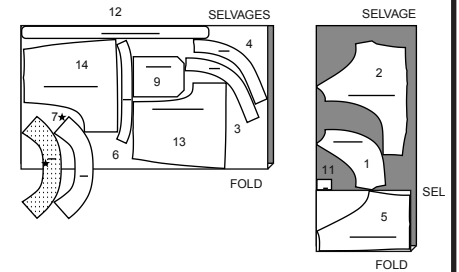
45" (115 cm)
with nap
sizes 10 12 14 16 18



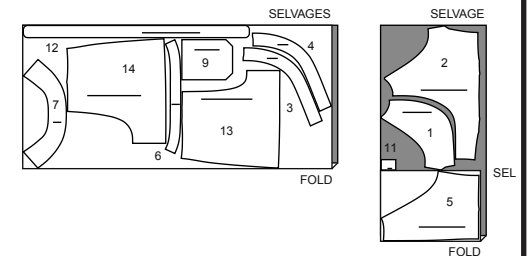
45" (115 cm)
with nap
sizes 14 16 18 20 22 24 26



60" (150 cm)
with nap
sizes 8 10 12 14 16 18



60" (115 cm)
with nap
sizes 20 22 24 26



PATTERN PIECES WILL BE IDENTIFIED BY NUMBERS THE FIRST TIME THEY ARE USED.

SEWING INFORMATION

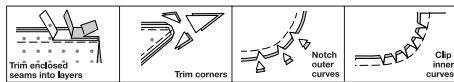
5/8" (1.5cm) SEAM ALLOWANCES ARE INCLUDED,
(unless otherwise indicated)

ILLUSTRATION SHADING KEY

Right Side	Wrong Side	Interfacing	Lining	Underlining

Pin or baste seams, right side together, matching notches. Fit garment before stitching major seams.

Press seam allowances flat; then open unless otherwise stated. Clip where necessary so they lie flat.



GLOSSARY

Sewing terms appearing in **BOLD TYPE** in Sewing Instructions are explained below.

SLIPSTITCH - Slide needle through a folded edge, then pick up a thread of underneath fabric.

STAYSTITCH - Stitch 1/2" (1.3cm) from raw edge within seam allowance.

TOPSTITCH - On outside, stitch 1/4" (6mm) from edge, seam or previous stitching, using presser foot as guide, or stitch where indicated in instructions.

UNDERSTITCH - Open out facing or underside of garment; stitch to seam allowance close to seam.



@duana_m_chandler

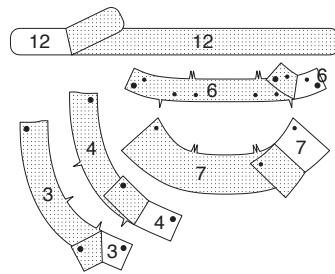
SEWING DIRECTIONS

DRESS A, ROMPER B

NOTE: Under each sub-heading, the first View will be illustrated, unless otherwise indicated.

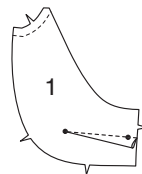
INTERFACING

1. Pin Interfacing to wrong side of **RIGHT FRONT BAND (3)**, **LEFT FRONT BAND (4)**, **COLLAR BAND (6)**, **COLLAR (7)**, and **BELT (12)** sections. Fuse, following manufacturer's instructions.

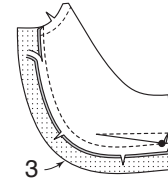


BODICE

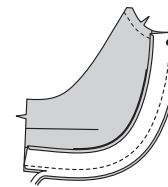
2. **STAYSTITCH** neck edge of **RIGHT BODICE FRONT (1)**. Stitch dart. Press dart down.



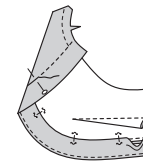
3. With right sides together and raw edges even, pin **RIGHT FRONT BAND (3)** to right bodice front, matching notches. Stitch. Press band out, pressing seam toward band.



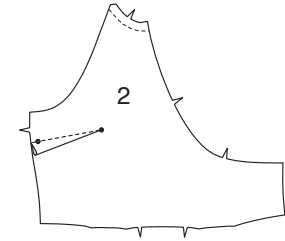
4. Press under 1/2" (1.3cm) on notched edge of right front band facing. Trim to 1/4" (6mm). On outside, pin band facing to band with curved, unnotched edges even. Stitch. Trim seam; clip curves.



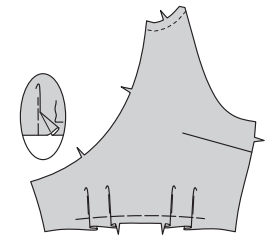
5. **UNDERSTITCH** the facing. Turn facing to inside; press. Pin pressed edge of facing over seam, placing pins on outside. On outside, stitch in the ditch of the seam, catching in pressed edge of facing on the inside.



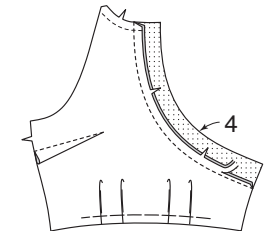
6. **STAYSTITCH** neck edge of **LEFT BODICE FRONT (2)**. Stitch dart. Press dart down.



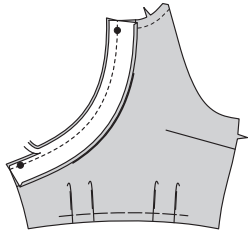
7. To make pleats in left bodice front, on outside, fold along solid lines. Bring folds to broken lines; pin. Baste across raw edge.



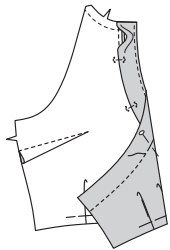
8. With right sides together and raw edges even, pin **LEFT FRONT BAND (4)** to left bodice front, matching notches. Stitch. Press band out, pressing seam toward band.



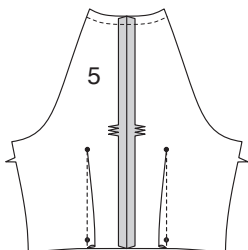
9. Press under 1/2" (1.3cm) on notched edge of left front band facing. Trim to 1/4" (6mm). On outside, pin band facing to band with curved, unnotched edges even. Stitch. Trim seam; clip curves.



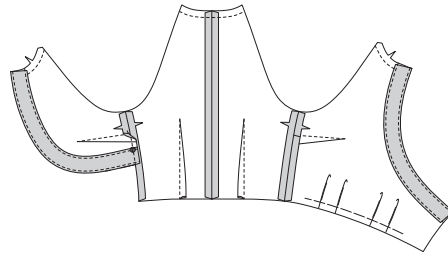
10. UNDERSTITCH the facing. Turn facing to inside; press. Pin pressed edge of facing over seam, placing pins on outside. On outside, stitch in the ditch of the seam, catching in pressed edge of facing on the inside.



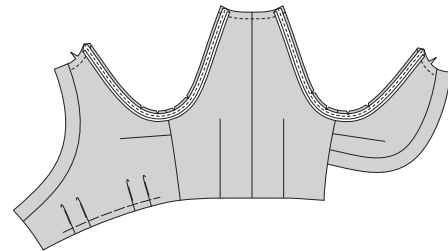
11. STAYSTITCH neck edge of BODICE BACK (5). Stitch center back seam. Stitch darts. Press darts toward center.



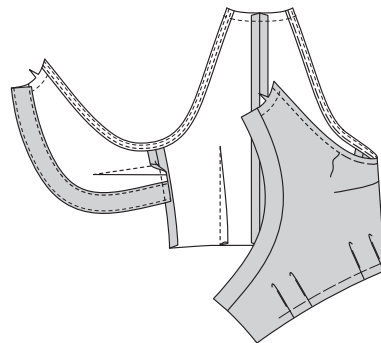
12. Stitch right bodice front to bodice back at side seams, matching large dots and notches. Stitch left bodice front to bodice back, matching notches.



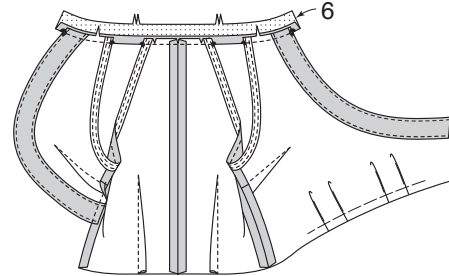
13. Open out one edge of single fold bias tape. With right sides together, pin tape to armhole edge with raw edges even. Stitch in a 3/8" (1cm) seam. Trim seam; clip curves.



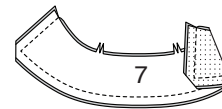
14. UNDERSTITCH the tape. Turn tape to inside; press. Baste close to inner edge of tape. On outside, top-stitch as basted.



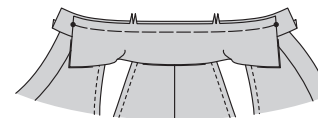
15. Clip bodice neck edge to stay-stitching. With right sides together, pin single notched edge of COLLAR BAND (6) to neck edge, matching centers back and large dots, placing small dots at armhole edges. (Collar band extends 5/8" (1.5cm) beyond front opening edges.) Stitch neck edge. Trim seam; clip curves. Press band out; press seam toward band.



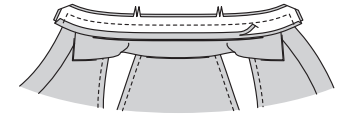
16. With right sides together and raw edges even, stitch facing to COLLAR (7), leaving notched edges open. Trim seam and corners.



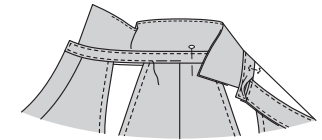
17. UNDERSTITCH the facing. Turn collar; press. Machine-baste raw edges together. With right sides together and raw edges even, pin collar (facing side) to neckband, matching centers back and double notches and placing ends at small dots. Machine-baste.



18. Press under 5/8" (1.5cm) on single notched edge of neckband facing; trim to 1/4" (6mm). With right sides together, pin neckband facing to neck band (over collar), matching centers. Stitch front and double notched edge. Trim seam and corners; clip curves.

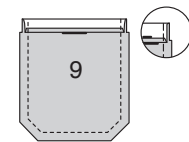


19. Turn band facing to inside; press. Pin pressed edge of facing over seam and pressed edges together between the small dots, placing pins on outside. On outside, stitch close to all edges of neckband, catching in pressed edge of facing on inside.

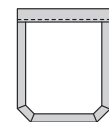


POCKET A, B

20. Press under upper raw edge of POCKET (9). Turn upper edge to outside along fold line, forming facing. Stitch along seam line on raw edges. Trim seam allowance in the facing area to 1/4" (6mm).

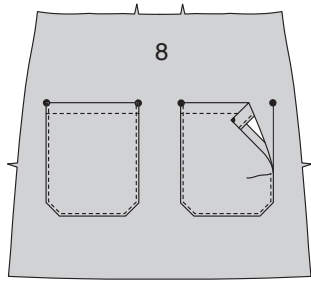


21. Turn corners right side out, turning facing to the wrong side; press, pressing under raw edges along stitching. Stitch facing close to inner edge.

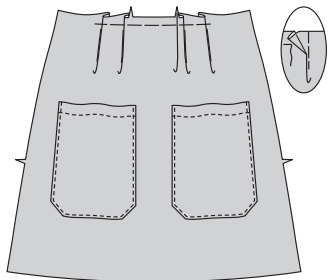


SKIRT A

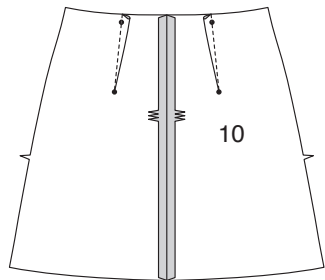
22. On outside, pin pocket to SKIRT FRONT (8) along placement line with upper corners at large dots. Stitch close to side and lower edges.



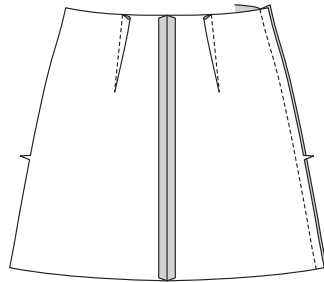
23. To make pleats in skirt front, on outside, fold along solid lines. Bring folds to broken lines; pin. Baste across raw edge.



24. Stitch center back seam of SKIRT BACK (10). Make darts. Press darts toward center.

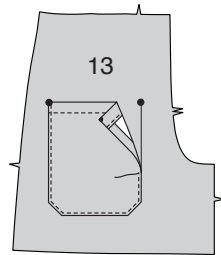


25. Stitch skirt front to back at left side seam.

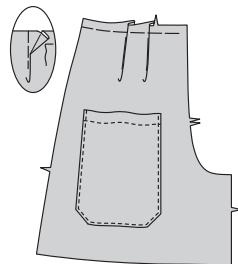


SHORTS B

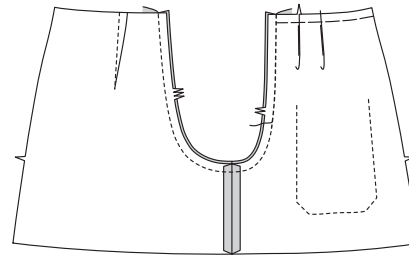
26. On outside, pin pocket to SHORTS FRONT (13) along placement line with upper corners at large dots. Stitch close to side and lower edges.



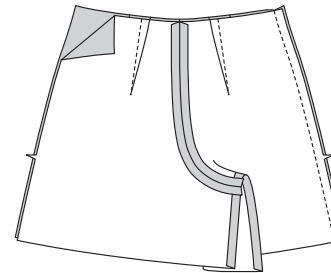
27. To make pleats in shorts front, on outside, fold along solid lines. Bring folds to broken lines; pin. Baste across raw edge.



28. Make darts in SHORTS BACK (14). Press darts toward center. Pin shorts front to shorts back at inner leg seams, matching notches. Stitch seam. With right sides together, pin center seam, matching inner leg seams and notches. Stitch. To reinforce seam, stitch again over first stitching.



29. Stitch shorts front to shorts back at left side seam.

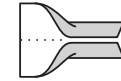


CONTINUE AS FOLLOWS FOR BOTH VIEWS

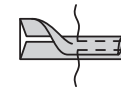
30. Fold CARRIER (11) in half, lengthwise with wrong sides together. Press, setting in a crease.



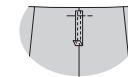
31. Open out long edges of carrier and turn them to wrong side so that they meet at the crease. Press.



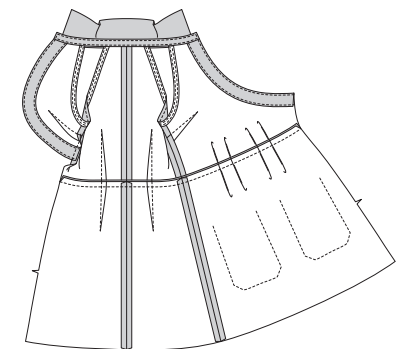
32. Fold carrier in half lengthwise, bringing pressed edges together. Stitch close to both long edges.



33. Press under 3/8" (1cm) on upper end of carrier. On center back, lap lower end of carrier over seamline, having end extend into seam allowance 3/8" (1cm).

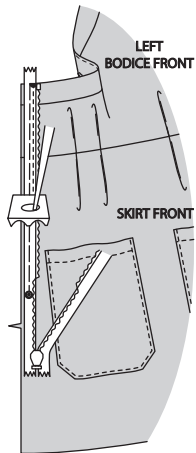


34. Stitch skirt or shorts to bodice at waist edge, matching centers, seams, and notches. Press seam toward bodice.

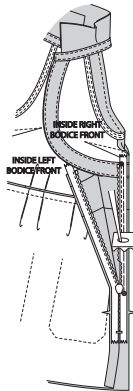


NOTE: The zipper is longer than the zipper opening and will be adjusted after the zipper is inserted. Stitch the invisible zipper using an invisible zipper foot.

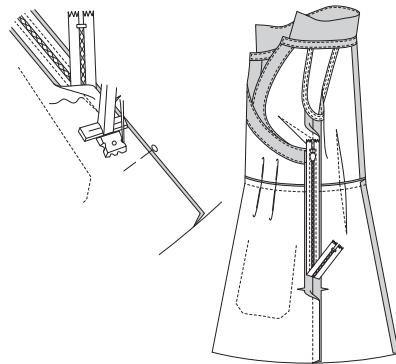
35. Open the zipper and press the tape using a cool iron. On outside, pin right side of the zipper face down on the left bodice side edge, as shown. Have the coil along the seam line, the tape within the seam allowance and the top stop at the upper large dot, as shown. Hand-baste along center of the tape. Position zipper foot at the top of the zipper with right groove of the foot over coil. Stitch along tape to the lower large dot. Back-stitch to reinforce.



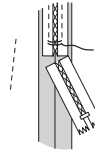
36. Pin the remaining half of the zipper to the right bodice front edge, having the coil along the seam line, the tape within the seam allowance and the top stop at the upper large dot, as shown. Make sure the upper and lower edges of the garment are even. Hand-baste along the center of the tape. Position zipper foot at the top of the zipper with LEFT groove over the coil. Stitch along tape to the lower large dot. Back-stitch to reinforce.



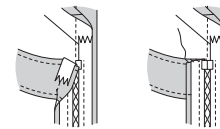
37. Close zipper and check that it is invisible from the outside. Pull the free ends of the zipper tape away from the seam allowance. Pin remaining right side seam together below zipper. Position zipper foot all the way to the left so the needle goes down through the outer notch of the foot. Start stitching seam 1/4" (6mm) above lowest stitch and slightly to the left. Stitch seam for about 3" (7.5cm). Stitch remainder of seam using your regular presser foot.



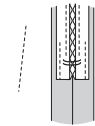
38. The zipper is longer than the opening, using a strong thread, hand-sew a few small stitches across ends of coils at end of opening. Trim away lower end of zipper tape to within 5/8" (1.5cm) of hand-stitches.



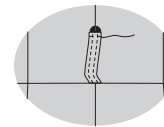
39. Turn upper end of zipper tape over left front seam allowance. **SLIPSTITCH** to upper edge of left front band.



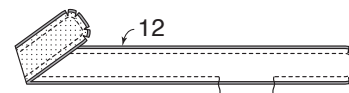
40. Open out each seam allowance at end of zipper and stitch tape to seam allowance.



41. Press up carrier to large dot on bodice back. Stitch close to pressed edge.



42. With right sides together and raw edges even, pin BELT (12) to belt facing. Stitch in a 3/8" (1cm) seam, leaving an opening for turning. Trim seam; clip curves.



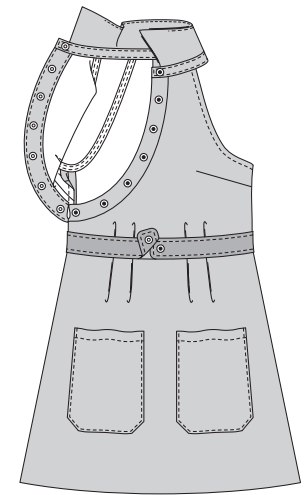
43. Turn belt; press. **SLIPSTITCH** opening closed. **TOPSTITCH** finished edges.



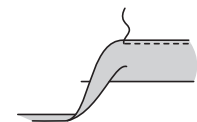
FINISHING

44. Apply knob section of snap fastener to right end of belt and socket section to left end of belt at small dots following manufacturer's directions. Thread belt through carrier and snap in front when wearing, lapping right end of belt over left.

Apply seven knob sections of snap fasteners to right front band and collar band and seven socket sections to left front band and collar band at small dots following manufacturer's directions.



45. Mark length. Press up hem along marking. Mark depth of hem; trim evenly. Press under 1/4" (6mm) on raw edge. Stitch close to inner pressed edge.





Congrats!


You've completed your sewing adventure!

**SHARE
YOUR** look!



Post your pattern and tag us at
@knowmepatterns and use #knowmepatterns
for a chance to be featured on our social media!

Look for more Know Me PDF patterns at [SomethingDelightful.com/know-me/](https://www.somethingdelightful.com/know-me/)

 1-800-255-2762

© 2023 KnowMe® an IG Design Group Americas, Inc. brand. | All Rights Reserved.
Sold for individual home use only and not for commercial or manufacturing purposes.