

@gwenstella.made



PDF PATTERNS

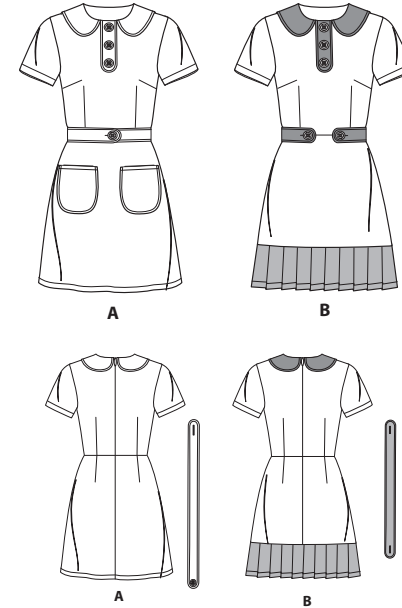
>> MISSES' DRESSES
 SKILL LEVEL: AVERAGE

THINGS YOU NEED:

- > **A,B:** 22" (56cm) invisible zipper. **Also for A:** Four 1" (2.5cm) buttons.
- Also for B:** Five 1" (2.5cm) buttons.

SUGGESTED FABRICS:

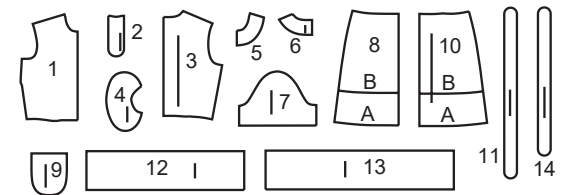
- > Cotton Blends, Double Knit, Gingham, Linen Blends, Pique, Poplin, Sateen, Stretch Wovens, Ponte. **Interfacing:** Lightweight Fusible.



Your printed tile pieces should be assembled before you move on to this step!

PIECES (14)

- 1 BODICE FRONT-A,B
- 2 PLACKET-A,B
- 3 BODICE BACK-A,B
- 4 COLLAR-A,B
- 5 FRONT FACING-A,B
- 6 BACK FACING-A,B
- 7 SLEEVE-A,B
- 8 SKIRT FRONT-A,B
- 9 POCKET-A
- 10 SKIRT BACK-A,B
- 11 BELT-A
- 12 FRONT AND BACK BAND-B
- 13 SIDE BAND-B
- 14 BELT-B



YARDAGE CHART

| SIZES | 8 | 10 | 12 | 14 | 16 | 18 | 20 | 22 | 24 | 26 | |
|----------------------|-----------------|-----------------|-----------------|-----------------|-----------------|-----------------|-----------------|-----------------|-----------------|-----------------|------|
| DRESS A | | | | | | | | | | | |
| 45"* | 2 | 2 | 2 $\frac{1}{8}$ | 2 $\frac{1}{8}$ | 2 $\frac{3}{8}$ | 2 $\frac{3}{8}$ | 2 $\frac{3}{8}$ | 2 $\frac{1}{2}$ | 2 $\frac{1}{2}$ | 2 $\frac{5}{8}$ | yds. |
| 60"* | 1 $\frac{5}{8}$ | 1 $\frac{5}{8}$ | 1 $\frac{3}{4}$ | 1 $\frac{3}{4}$ | 1 $\frac{3}{4}$ | 1 $\frac{3}{4}$ | 1 $\frac{3}{4}$ | 2 | 2 | 2 $\frac{1}{4}$ | " |
| 115cm* | 1.9 | 1.9 | 1.9 | 2.0 | 2.1 | 2.2 | 2.2 | 2.3 | 2.3 | 2.4 | m. |
| 150cm* | 1.5 | 1.5 | 1.5 | 1.6 | 1.6 | 1.6 | 1.6 | 1.9 | 1.9 | 2.1 | " |
| INTERFACING A | | | | | | | | | | | |
| 20" | 1 | 1 | 1 | 1 $\frac{1}{8}$ | 1 $\frac{1}{8}$ | 1 $\frac{1}{4}$ | 1 $\frac{1}{4}$ | 1 $\frac{1}{4}$ | 1 $\frac{3}{8}$ | 1 $\frac{3}{8}$ | yds. |
| 51cm | 1.0 | 1.0 | 1.0 | 1.1 | 1.1 | 1.1 | 1.2 | 1.2 | 1.3 | 1.3 | m. |
| DRESS B | | | | | | | | | | | |
| 45"* | 1 $\frac{3}{8}$ | 1 $\frac{3}{8}$ | 1 $\frac{1}{2}$ | 1 $\frac{1}{2}$ | 1 $\frac{1}{2}$ | 1 $\frac{3}{4}$ | 2 | 2 | 2 | 2 | yds. |
| 60"* | 1 $\frac{3}{8}$ | 1 $\frac{3}{8}$ | 1 $\frac{3}{8}$ | 1 $\frac{3}{8}$ | 1 $\frac{3}{8}$ | 1 $\frac{3}{8}$ | 1 $\frac{3}{8}$ | 1 $\frac{1}{2}$ | 1 $\frac{1}{2}$ | 1 $\frac{5}{8}$ | " |
| 115cm* | 1.3 | 1.3 | 1.4 | 1.4 | 1.4 | 1.5 | 1.9 | 1.9 | 1.9 | 1.9 | m. |
| 150cm* | 1.3 | 1.3 | 1.3 | 1.3 | 1.3 | 1.3 | 1.3 | 1.3 | 1.4 | 1.5 | " |
| CONTRAST B | | | | | | | | | | | |
| 45"* | 1 $\frac{1}{4}$ | 1 $\frac{1}{4}$ | 1 $\frac{1}{4}$ | 1 $\frac{1}{4}$ | 1 $\frac{1}{4}$ | 1 $\frac{1}{4}$ | 1 $\frac{1}{2}$ | 1 $\frac{5}{8}$ | 1 $\frac{5}{8}$ | 1 $\frac{3}{4}$ | yds. |
| 60"* | 1 | 1 | 1 | 1 | 1 | 1 $\frac{1}{8}$ | 1 $\frac{1}{8}$ | 1 $\frac{1}{4}$ | 1 $\frac{1}{4}$ | 1 $\frac{1}{4}$ | " |
| 115cm* | 1.2 | 1.2 | 1.2 | 1.2 | 1.2 | 1.2 | 1.4 | 1.5 | 1.5 | 1.6 | m. |
| 150cm* | 0.8 | 0.8 | 1.0 | 1.0 | 1.0 | 1.1 | 1.1 | 1.1 | 1.2 | 1.2 | " |
| INTERFACING B | | | | | | | | | | | |
| 20" | $\frac{7}{8}$ | $\frac{7}{8}$ | $\frac{7}{8}$ | 1 | 1 | 1 $\frac{1}{8}$ | 1 $\frac{1}{8}$ | 1 $\frac{1}{4}$ | 1 $\frac{1}{4}$ | 1 $\frac{1}{4}$ | yds. |
| 51cm | 0.8 | 0.8 | 0.8 | 1.0 | 1.0 | 1.1 | 1.1 | 1.1 | 1.2 | 1.2 | m. |

FINISHED GARMENT MEASUREMENTS

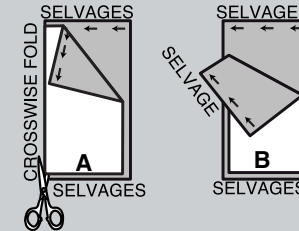
| SIZES | 8 | 10 | 12 | 14 | 16 | 18 | 20 | 22 | 24 | 26 | |
|---|-----|-----|-----|-----|-----|-----|-----|-----|-----|-----|-----|
| A,B BUST | 35½ | 36½ | 38 | 40 | 42 | 44 | 46 | 48 | 50 | 52 | in. |
| | 90 | 93 | 97 | 102 | 107 | 112 | 117 | 122 | 127 | 132 | cm. |
| A,B WAIST | 26 | 27 | 28½ | 30½ | 32½ | 34½ | 36½ | 38½ | 40½ | 42½ | in. |
| | 66 | 69 | 72 | 77 | 83 | 88 | 93 | 98 | 103 | 108 | cm. |
| A,B HIP | 37 | 38 | 39½ | 41½ | 43½ | 45½ | 47½ | 49½ | 51½ | 53½ | in. |
| | 94 | 97 | 100 | 105 | 110 | 116 | 121 | 126 | 131 | 136 | cm. |
| WIDTH, LOWER EDGE | | | | | | | | | | | |
| DRESS A | 42 | 43 | 44½ | 46½ | 48½ | 50½ | 52½ | 54½ | 56½ | 58½ | in. |
| | 107 | 109 | 113 | 118 | 123 | 128 | 133 | 138 | 144 | 149 | cm. |
| DRESS B | 39 | 40 | 41½ | 43½ | 45½ | 47½ | 49½ | 51½ | 53½ | 55½ | in. |
| | 99 | 102 | 105 | 110 | 116 | 121 | 126 | 131 | 136 | 141 | cm. |
| FINISHED BACK LENGTH FROM BASE OF NECK | | | | | | | | | | | |
| DRESS A,B (INCL. PLEATS) | 33¾ | 34 | 34¼ | 34½ | 34¾ | 35 | 35¼ | 35½ | 35¾ | 36 | in. |
| | 86 | 86 | 87 | 88 | 88 | 89 | 90 | 90 | 91 | 91 | cm. |

BODY MEASUREMENTS

| SIZES | 8 | 10 | 12 | 14 | 16 | 18 | 20 | 22 | 24 | 26 | |
|----------------------------------|-----|------|------|-----|------|-----|-----|------|-----|-----|-----|
| BUST | 31½ | 32½ | 34 | 36 | 38 | 40 | 42 | 44 | 46 | 48 | in. |
| | 80 | 83 | 87 | 92 | 97 | 102 | 107 | 112 | 117 | 122 | cm. |
| WAIST | 24 | 25 | 26½ | 28 | 30 | 32 | 34 | 37 | 39 | 41 | in. |
| | 61 | 64 | 67 | 71 | 76 | 81 | 87 | 94 | 99 | 104 | cm. |
| HIP-9" (23CM) BELOW WAIST | 33½ | 34½ | 36 | 38 | 40 | 42 | 44 | 46 | 48 | 50 | in. |
| | 85 | 88 | 92 | 97 | 102 | 107 | 112 | 117 | 122 | 127 | cm. |
| BACK-NECK TO WAIST | 15¾ | 16 | 16¼ | 16½ | 16¾ | 17 | 17¼ | 17½ | 17¾ | 18 | in. |
| | 40 | 40.5 | 41.5 | 42 | 42.5 | 43 | 44 | 44.5 | 45 | 46 | cm. |

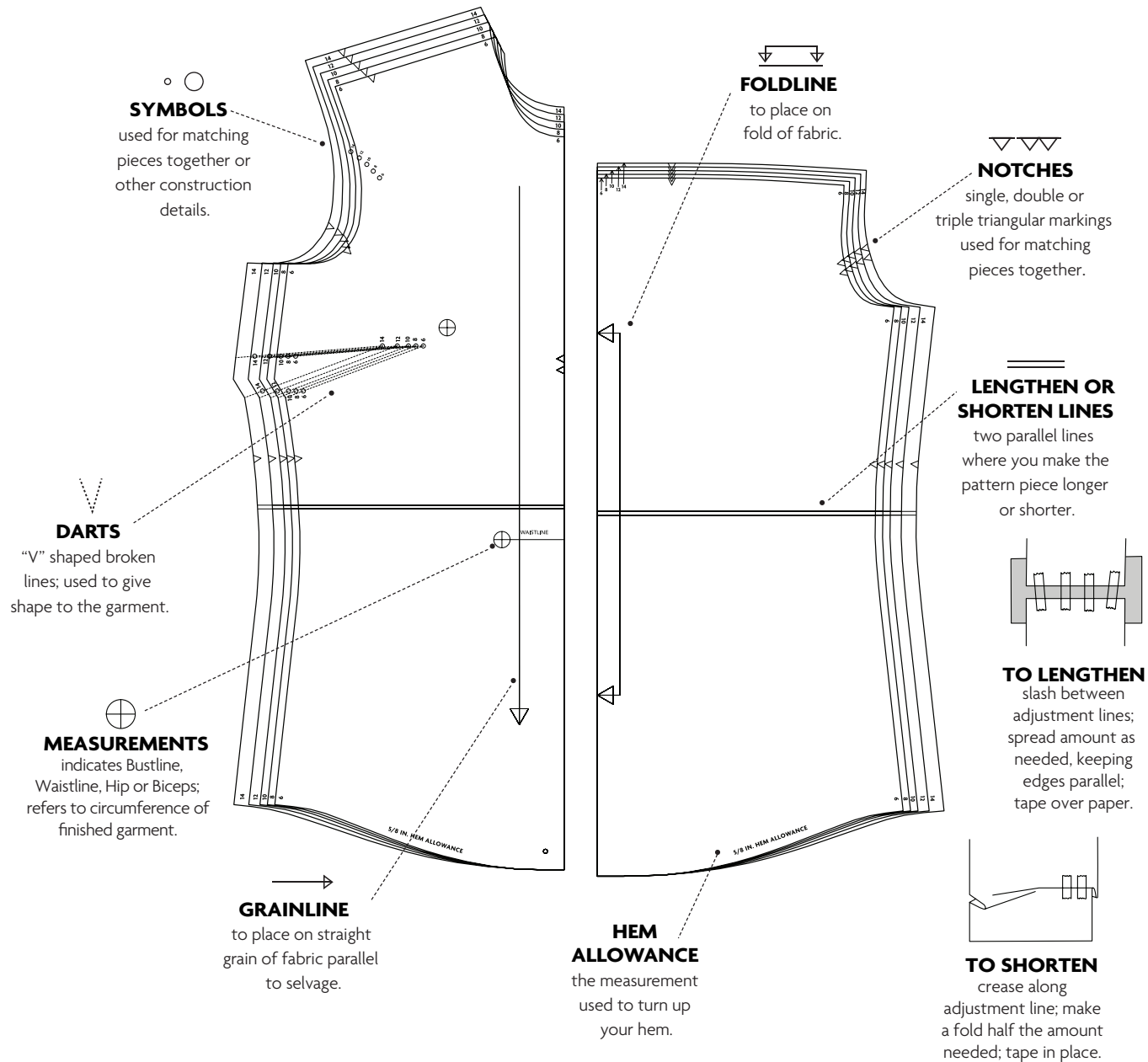
CUTTING AND MARKING

- > **SHRINK FABRIC** if not labeled pre-shrunk. Press.
- > **CIRCLE LAYOUT** for View, Size, Fabric Width.
- > Use **WITH NAP** layout for fabrics with one-way designs, nap, pile or surface shading. Because most knits have surface shading, a with nap layout is used.
- > For **DOUBLE THICKNESS (WITH FOLD)**, fold fabric with right sides together.
- > ***DOUBLE THICKNESS (WITHOUT FOLD)**, for fabrics with nap, fold fabric crosswise, right sides together. Mark as shown. Cut along crosswise fold of fabric (A). Turn upper layer 180° so arrows go in same direction and place over lower layer, right sides together (B).
- > For **SINGLE THICKNESS**, place fabric right side up. (For Fur Pile fabrics, place pile side down.)



- > Before **CUTTING**, place all pieces on fabric according to layout. Pin.
(Layouts show approximate position of pattern pieces; position may vary according to your pattern size.)
- > ★ Cut other pieces first, allowing enough fabric to cut this piece. Open fabric. Cut piece on single layer of fabric with piece face up on right side of fabric.
- > Cut accurately, cutting notches outward.
- > Before removing pattern, **TRANSFER MARKINGS** and lines of construction to **WRONG SIDE** of fabric, using Pin and Chalk Pencil method or Tracing Paper and Dressmaker Wheel. Markings needed on right side of fabric should be thread traced.
NOTE: Broken-line boxes (a! b! c!) in layouts represent pieces cut by measurements provided.
- > Prewash your fabric using a method that's suitable for the fabric type.
- > Fold fabric with right sides together, matching **SELVAGES**.
- > Pin your pattern pieces to the fabric as shown below and cut them out using a sharp pair of dressmaker's shears.

PATTERN MARKINGS

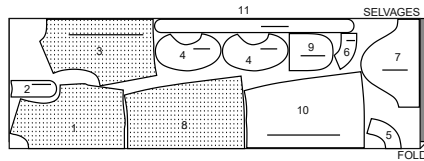


CUTTING LAYOUTS

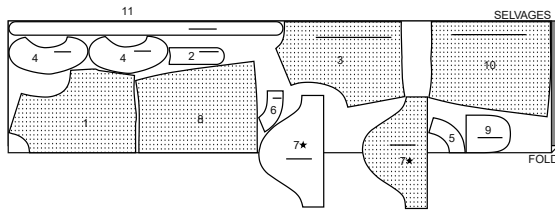
DRESS A

use pieces: 1 2 3 4 5 6 7 8 9 10 11

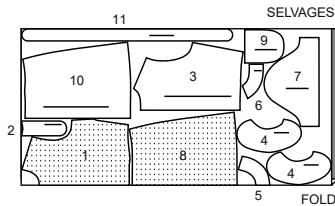
45" (115 cm)
with nap
sizes 8 10 12 14



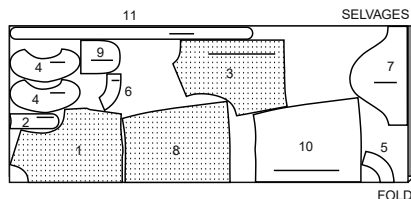
45" (115 cm)
with nap
sizes 16 18 20 22 24 26



60" (150 cm)
with nap
sizes 8 10 12 14 16 18 20



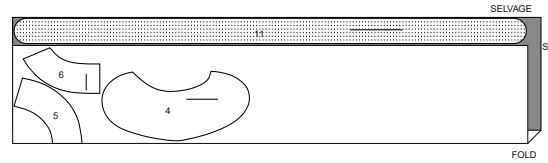
45" (115 cm)
with nap
sizes 22 24 26



INTERFACING A

use pieces: 4 5 6 11

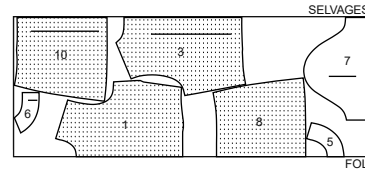
20" (51 cm)
all sizes



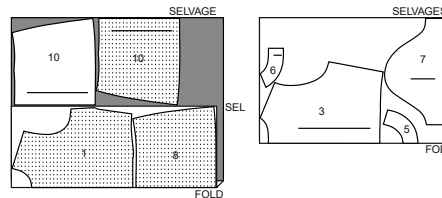
DRESS B

use pieces: 1 3 5 6 7 8 10

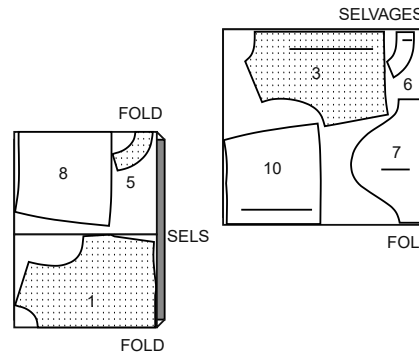
45" (115 cm)
with nap
sizes 8 10 12 14 16 18



45" (115 cm)
with nap
sizes 20 22 24 26



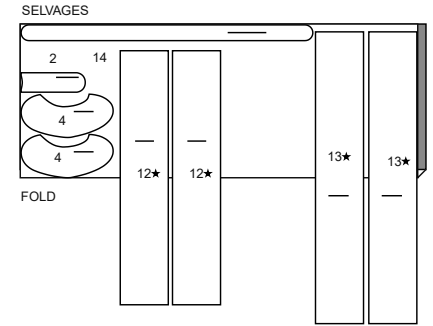
60" (150 cm)
with nap
all sizes



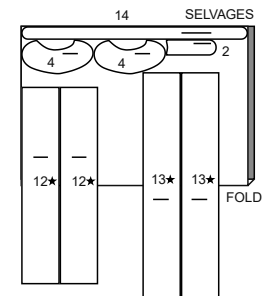
CONTRAST B

use pieces: 2 4 12 13 14

45" (115 cm)
with nap
all sizes



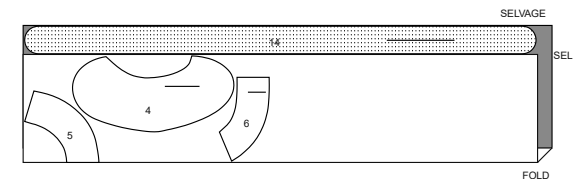
60" (150 cm)
with nap
all sizes



INTERFACING B

use pieces: 4 5 6 14

20" (51 cm)
all sizes



PATTERN PIECES WILL BE IDENTIFIED BY NUMBERS THE FIRST TIME THEY ARE USED.

SEWING INFORMATION

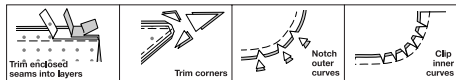
5/8" (1.5cm) SEAM ALLOWANCES ARE INCLUDED,
(unless otherwise indicated)

ILLUSTRATION SHADING KEY

| | | | | |
|------------|------------|-------------|--------|-------------|
| | | | | |
| Right Side | Wrong Side | Interfacing | Lining | Underlining |

Pin or baste seams, right side together, matching notches. Fit garment before stitching major seams.

Press seam allowances flat; then open unless otherwise stated. Clip where necessary so they lie flat.



GLOSSARY

Sewing terms appearing in **BOLD TYPE** in Sewing Instructions are explained below.

EASESTITCH - Stitch along seamline, using long machine stitches. Pull thread ends when adjusting to fit.

NOTE: For sleeve caps, make a second row of long machine stitches 1/4" (6mm) away in seam allowance. for more control.

FINISH - Stitch 1/4" (6mm) from raw edge and finish with one of the following: (1) Pink OR (2) Overcast OR (3) Turn in along stitching and stitch close to fold OR (4) Overlock.

OPTIONAL FOR HEMS: Apply Seam Binding.

SLIPSTITCH - Slide needle through a folded edge, then pick up a thread of underneath fabric.

STAYSTITCH - Stitch 1/8" (3mm) from seamline in seam allowance (usually 1/2" (1.3cm) from raw edge).

TOPSTITCH - On outside, stitch 1/4" (6mm) from edge, seam or previous stitching, using presser foot as guide, or stitch where indicated in instructions.

UNDERSTITCH - Open out facing or underside of garment; stitch to seam allowance close to seam.



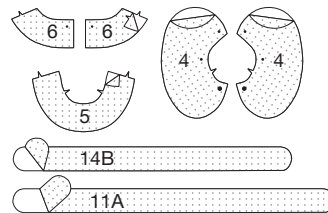
@gwenstella.made

SEWING DIRECTIONS

DRESS A, B

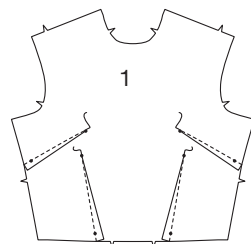
INTERFACING

1. Fuse **INTERFACING** to wrong side of each matching **FABRIC** section, following manufacturer's instructions.

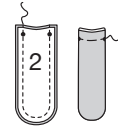


BODICE FRONT AND BACK

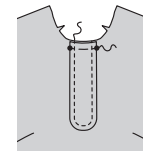
2. Stitch bust darts in **BODICE FRONT** (1). Press fold downward. Stitch waist darts in bodice front. Press fold toward center.



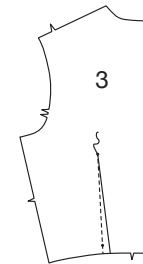
3. Pin **PLACKET** (2) sections, **RIGHT** sides together. Stitch in 3/8" (1cm) seam, leaving upper edge free; trim seams. Turn right side out; press. Baste raw edges.



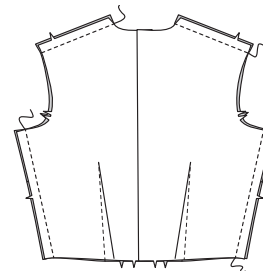
4. On outside, pin placket to bodice front, matching centers and large dots, having neck edges even. Baste neck edge. Stitch placket to front 1/4" (6mm) from finished edges, through all layers.



5. Stitch dart in **BODICE BACK** (3). Press fold toward center.

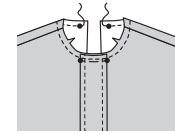


6. Stitch bodice back to bodice front at shoulders and sides.

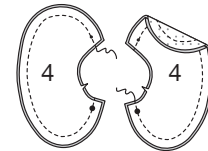


COLLAR

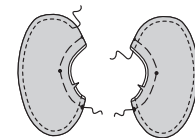
7. **STAYSTITCH** bodice neck edge between small dots.



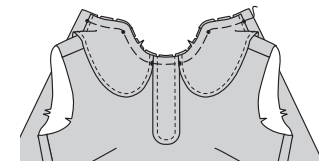
8. For each collar, pin one uninterfaced **COLLAR** (4) section to one interfaced collar section, right sides together. Stitch along unnotched edge; trim seams.



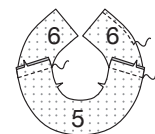
9. Turn right side out; press. Baste raw edges together. **TOPSTITCH** finished edge.



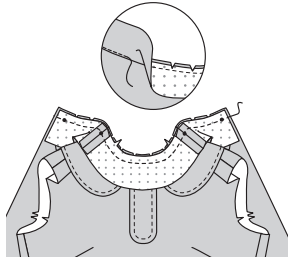
10. Pin collar to neck edge, right sides up, matching notches and dots, having center dot at shoulder seams, clipping bodice neck edge where necessary. Baste.



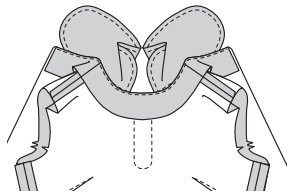
11. Stitch **FRONT FACING** (5) to **BACK FACING** (6) at shoulders. **FINISH** lower edge of facing.



12. Stitch facing to neck edge, RIGHT sides together, matching notches, centers, dots and seams; trim seams.

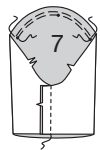


13. UNDERSTITCH facing. Turn facing to inside; press.

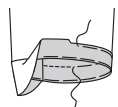


SLEEVE

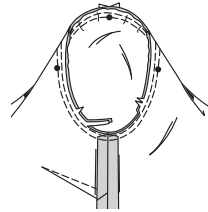
14. EASESTITCH cap of SLEEVE (7) between outer dots. Stitch sleeve seam.



15. Turn up a 1-1/4" (3.2cm) hem on lower edge of sleeve. Baste close to fold. Turn under 1/4" (6mm) on raw edge. Baste hem in place close to upper edge; press. **TOPSTITCH** hem along upper basting.



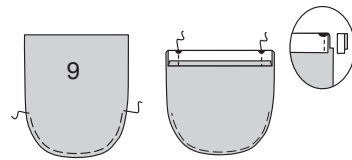
16. With RIGHT sides together, pin sleeve into armhole with center small dot at shoulder seam, matching underarm seams, notches and remaining small dots. Adjust ease; baste. Stitch. Stitch again 1/8" (3mm) away in seam allowance. Trim close to second stitching. Turn seam allowances toward sleeve.



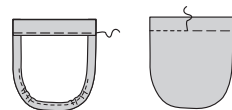
SKIRT

VIEW A

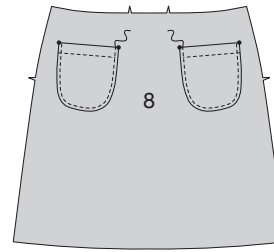
17. Stitch curved edges of POCKET (9) 3/8" (1cm) from raw edge, using long machine stitches, as shown. Turn in 1/4" (6mm) on upper edge of pocket; press. Turn upper edge to outside along foldline. Stitch ends; trim seams.



18. Turn upper edge of pocket to inside along foldline, turning in remaining seam allowances. Pull threads to ease in fullness on curves; press. Baste close to inner pressed edge. **TOPSTITCH** pocket along basting.

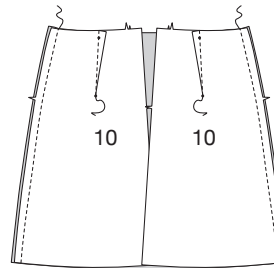


19. On outside, pin pockets to SKIRT FRONT (8), matching dots. Stitch 1/4" (6mm) from sides and lower edge.

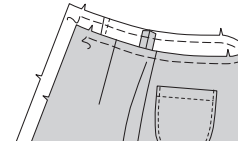


VIEWS A, B

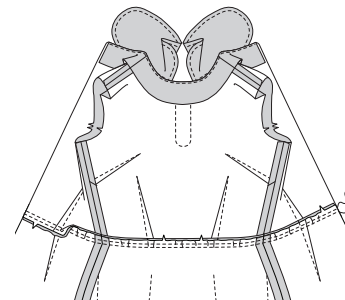
20. Stitch darts in SKIRT BACK (10). Press fold of darts toward center. Stitch skirt back to skirt front at sides.



21. EASESTITCH upper edge of skirt between back notches.



22. Pin skirt to bodice, right sides together, matching centers, seams and back darts. Adjust ease. Stitch. Stitch again 1/4" (6mm) away in seam allowance. Trim close to second stitching. Press seam toward bodice.

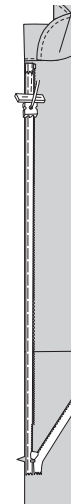


ZIPPER

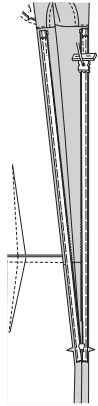
23. Open the zipper and press the tape flat. Turn under upper edges of zipper. Baste.



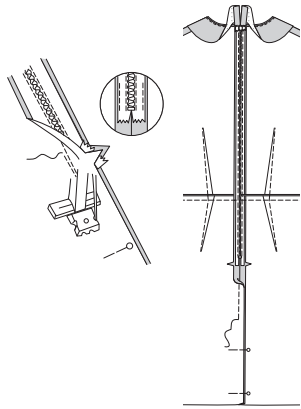
24. Keep the free upper edges of collar and back facing out of the way. On OUTSIDE, pin RIGHT side of the zipper face down on the RIGHT side of the zipper opening. Have the coil along the seam line, the tape within the seam allowance and the top stop 1/8" (3mm) below neck seam, as shown. Hand-baste along center of tape. Position zipper foot, at the top of the zipper with RIGHT groove over coil. Stitch along tape to notch. Back-stitch to reinforce.



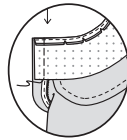
25. Pin the remaining half of the zipper to the LEFT side of the zipper opening in the same manner. Hand-baste along the center of tape. Position zipper foot at the top of the zipper with LEFT groove over the coil. Stitch along tape to the notch. Back-stitch to reinforce.



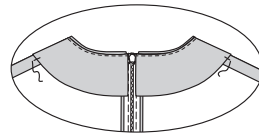
26. Close zipper and check that it is invisible from the OUTSIDE. Pull the free ends of the zipper tape away from the seam allowance. Pin remaining center back seam together below zipper. Position zipper foot all the way to the LEFT so the needle goes down through the outer notch of the foot. Start stitching seam 1/4" (6mm) above the lowest stitch and slightly to the LEFT. Stitch remainder of seam. If you prefer, open out each seam allowance at end of zipper and stitch tape to seam allowance.



27. Open out back opening edges of dress, rolling the zipper teeth away from the opening edge. Turn back facing to OUTSIDE. With RIGHT sides together, pin back and facing together. Stitch across facing 1/2" (1.3cm) from back edges, keeping zipper teeth free. Do not trim center back edges.

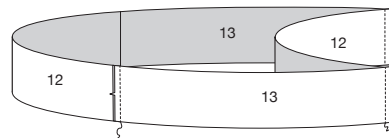


28. Turn facing to INSIDE again; press. Tack facing at seams.

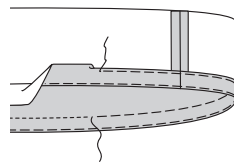


BAND B

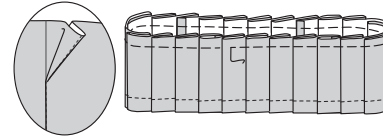
29. Pin one FRONT AND BACK BAND (12) section to each SIDE BAND (13) section at sides. Stitch. Stitch remaining front and back band section to each side band at sides.



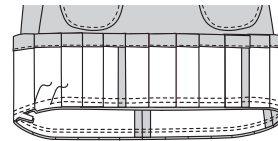
30. Turn up a 1-1/4" (3.2cm) hem on lower edge of band. Baste close to fold. Turn under 1/4" (6mm) on raw edge. Baste hem in place close to upper edge; press. TOPSTITCH hem along upper basting.



31. To make pleats on band, on OUTSIDE, fold along solid lines. Bring folds to broken lines; baste. Baste across upper edge; press.



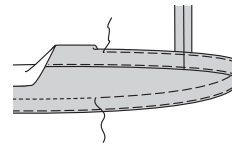
32. With RIGHT sides together, pin band to lower edge of dress, matching centers, having raw edges even. Stitch. Stitch again 1/4" (6mm) away in seam allowance. Trim close to second stitching. Press seam toward dress, turning band down.



FINISHING

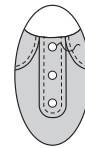
HEM A

33. Turn up a 1-1/4" (3.2cm) hem on lower edge of dress. Baste close to fold. Turn under 1/4" (6mm) on raw edge. Baste hem in place close to upper edge; press. TOPSTITCH hem along upper basting.



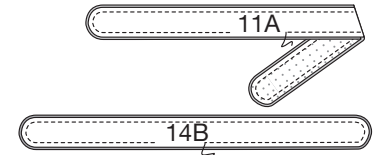
BUTTONS

34. Sew three buttons to placket at dots, through all layers. (Save remaining buttons.)

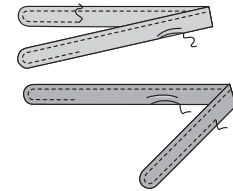


BELT

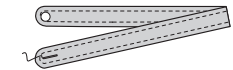
35. Pin BELT (11) or (14) sections, RIGHT sides together. Stitch in a 3/8" (1cm) seam, leaving an opening for turning; trim seams.



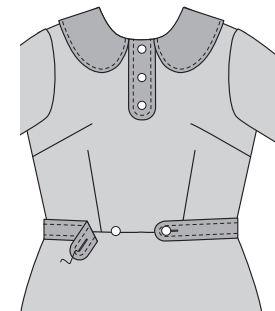
36. Turn right side out; press. SLIPSTITCH opening edges together. TOPSTITCH all edges of belt.



37. For View A: Make buttonhole on belt at marking. Sew remaining button to belt at dot.



38. For View B: Make buttonholes on belt at markings. Sew remaining buttons to lower edge of bodice front at small dots.





Congrats!


You've completed your sewing adventure!

**SHARE
YOUR** look!



Post your pattern and tag us at
@knowmepatterns and use #knowmepatterns
for a chance to be featured on our social media!

Look for more Know Me PDF patterns at [SomethingDelightful.com/know-me/](https://www.somethingdelightful.com/know-me/)

 1-800-255-2762

© 2023 KnowMe® an IG Design Group Americas, Inc. brand. | All Rights Reserved.
Sold for individual home use only and not for commercial or manufacturing purposes.