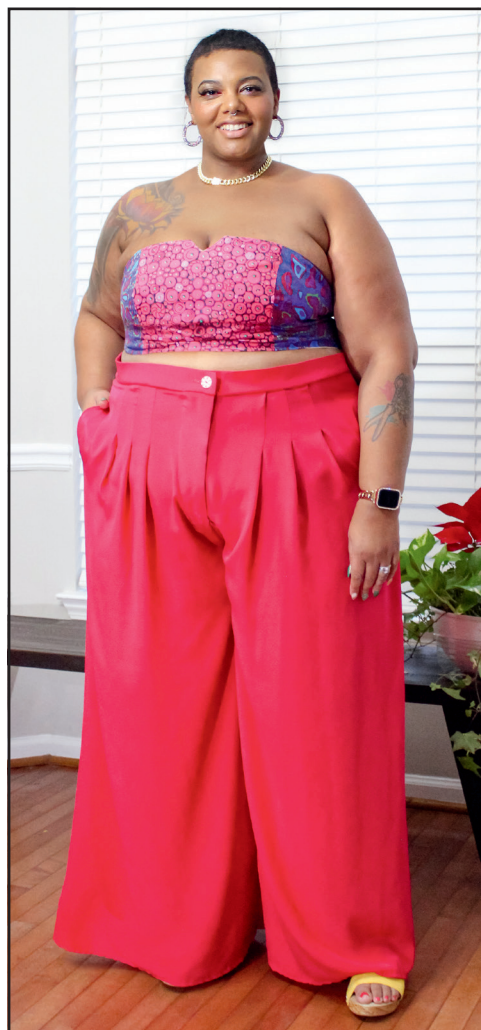




@needleandthebelle



>> WOMEN'S CROP TOP WITH C,D,DD
CUP SIZES, SHORTS AND PANTS
SKILL LEVEL: AVERAGE



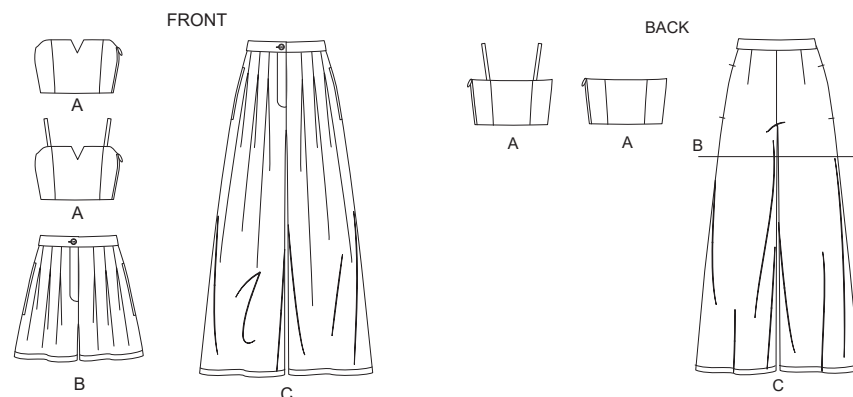
PDF PATTERNS

THINGS YOU NEED:

> **A:** 9" (18cm) exposed separating zipper (adjust to fit). **B,C:** 9" (23cm) zipper (adjust to fit), one ¾" (2cm) button.

SUGGESTED FABRICS:

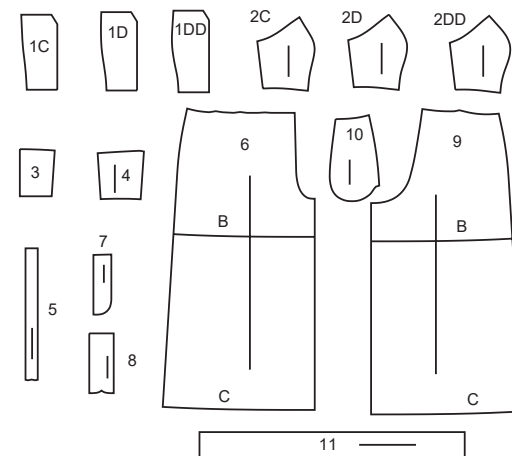
> **A,B,C:** Cotton Blends, Crepe, Faille, Gabardine, Linen Blends, Polyester, Rayon. **B,C** also in Silky Types. **Lining:** Cotton Blends, Polyester.
Interfacing: Lightweight Fusible.



Your printed tile pieces should be assembled before you move on to this step!

PIECES (11)

1C FRONT - A
1D FRONT - A
1DD FRONT- A
2C SIDE FRONT - A
2D SIDE FRONT - A
2DD SIDE FRONT - A
3 BACK - A
4 SIDE BACK - A
5 SHOULDER STRAP - A
6 FRONT - B,C
7 FLY FACING - B,C
8 FLY - B,C
9 BACK - B,C
10 POCKET - B,C
11 WAISTBAND - B,C



YARDAGE CHART

SIZES	16W	18W	20W	22W	24W	26W	28W	30W	32W	34W	36W	38W	
CROP TOP A													
45", 60"*	$\frac{3}{4}$	$\frac{3}{4}$	$\frac{3}{4}$	$\frac{3}{4}$	$\frac{3}{4}$	$\frac{3}{4}$	$\frac{3}{4}$	$\frac{3}{4}$	$\frac{3}{4}$	$\frac{3}{4}$	$\frac{7}{8}$	$\frac{7}{8}$	yds.
115cm, 150cm*	0.7	0.7	0.7	0.7	0.7	0.7	0.7	0.7	0.7	0.7	0.7	0.8	m.
LINING- 45"* (115cm)**- $\frac{3}{4}$ yd. (0.7m)													
INTERFACING- 20" (51cm)- $1\frac{5}{8}$ yds. (1.5m)													
SHORTS B													
60"*	$1\frac{1}{4}$	$1\frac{1}{4}$	$1\frac{3}{8}$	$1\frac{1}{2}$	$1\frac{1}{2}$	$1\frac{1}{2}$	$1\frac{5}{8}$	$1\frac{3}{4}$	$1\frac{3}{4}$	$1\frac{3}{4}$	$1\frac{3}{4}$	$1\frac{3}{4}$	yds.
150cm*	1.2	1.2	1.3	1.4	1.4	1.4	1.5	1.6	1.6	1.6	1.6	1.6	m.
INTERFACING B,C- 20" (51cm)- $1\frac{3}{4}$ yds. (1.6m)													
PANTS C													
60"*	$2\frac{3}{4}$	$2\frac{3}{4}$	$2\frac{3}{4}$	$2\frac{3}{4}$	$2\frac{3}{4}$	$2\frac{3}{4}$	$2\frac{3}{4}$	$2\frac{7}{8}$	$3\frac{1}{8}$	$3\frac{1}{4}$	$3\frac{1}{4}$	$4\frac{1}{2}$	yds.
150cm*	2.6	2.6	2.6	2.6	2.6	2.6	2.6	2.6	2.9	2.9	3.0	4.0	m.

FINISHED GARMENT MEASUREMENTS

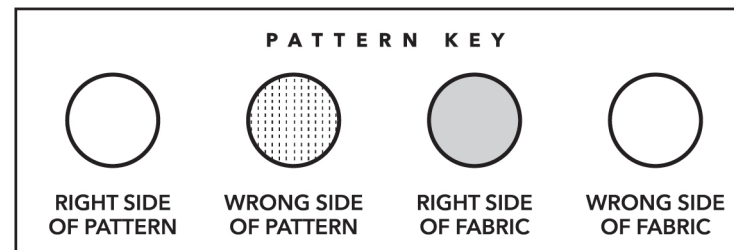
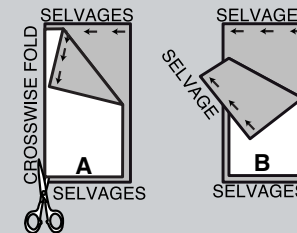
SIZES	16W	18W	20W	22W	24W	26W	28W	30W	32W	34W	36W	38W	
C BUST CUP	38½	40½	42½	44½	46½	48½	50½	52½	54½	56½	58½	60½	yds.
	98	103	108	113	118	123	128	133	138	141	149	154	m.
D BUST CUP	39½	41½	43½	45½	47½	49½	51½	53½	55½	57½	59½	61½	yds.
	100	105	110	116	121	126	131	136	141	146	151	156	m.
DD BUST CUP	40½	42½	44½	46½	48½	49½	52½	54½	56½	58½	60½	62½	yds.
	103	108	113	118	123	128	133	138	144	149	154	159	m.
B,C WAIST	31½	33½	36½	37½	39½	41½	43½	45½	47½	49½	51½	53½	yds.
	80	85	90	95	100	105	110	116	121	126	131	136	m.
B,C HIP	47	49	51	53	55	57	59	61	63	65	67	69	yds.
	119	124	130	135	140	145	150	155	160	165	170	175	m.
WIDTH, EACH LEG													
SHORTS B	38	39	40	41	42	43	44	45	46	47	48	49	yds.
	97	99	102	104	107	109	112	114	117	119	122	124	m.
PANTS C	41	42	43	44	45	46	47	48	49	50	51	52	yds.
	104	107	109	112	114	117	119	122	124	127	130	132	m.
FINISHED SIDE LENGTH FROM WAIST													
SHORTS B	16¾	17	17¼	17½	17¾	18	18¼	18½	18¾	19	19¼	19½	yds.
	43	43	44	44	45	46	46	47	48	48	49	50	m.
PANTS C	42¾	43	43¼	43½	43¾	44	44¼	44½	44¾	45	45¼	45½	yds.
	109	109	110	110	111	112	112	113	114	114	115	116	m.

BODY MEASUREMENTS

SIZES	16W	18W	20W	22W	24W	26W	28W	30W	32W	34W	36W	38W	
BUST	38	40	42	44	46	48	50	52	54	56	58	60	ins.
	97	102	107	112	117	122	127	132	137	142	147	152	cm.
WAIST	31	33	35	37	39	41½	44	46½	49	51½	53	54½	ins.
	79	84	89	94	99	105	112	118	124	130	134	138	cm.
HIP	40	42	44	46	48	50	52	54	56	58	60	62	ins.
	102	107	112	117	122	127	132	137	142	147	152	157	cm.
BACK-NECK TO WAIST	17	17⅞	17¼	17⅞	17½	17⅞	17¾	17⅞	18	18⅞	18¼	18⅞	ins.
	43	43.5	44	44	44.5	45	45	45.5	46	46	46.5	47	cm.

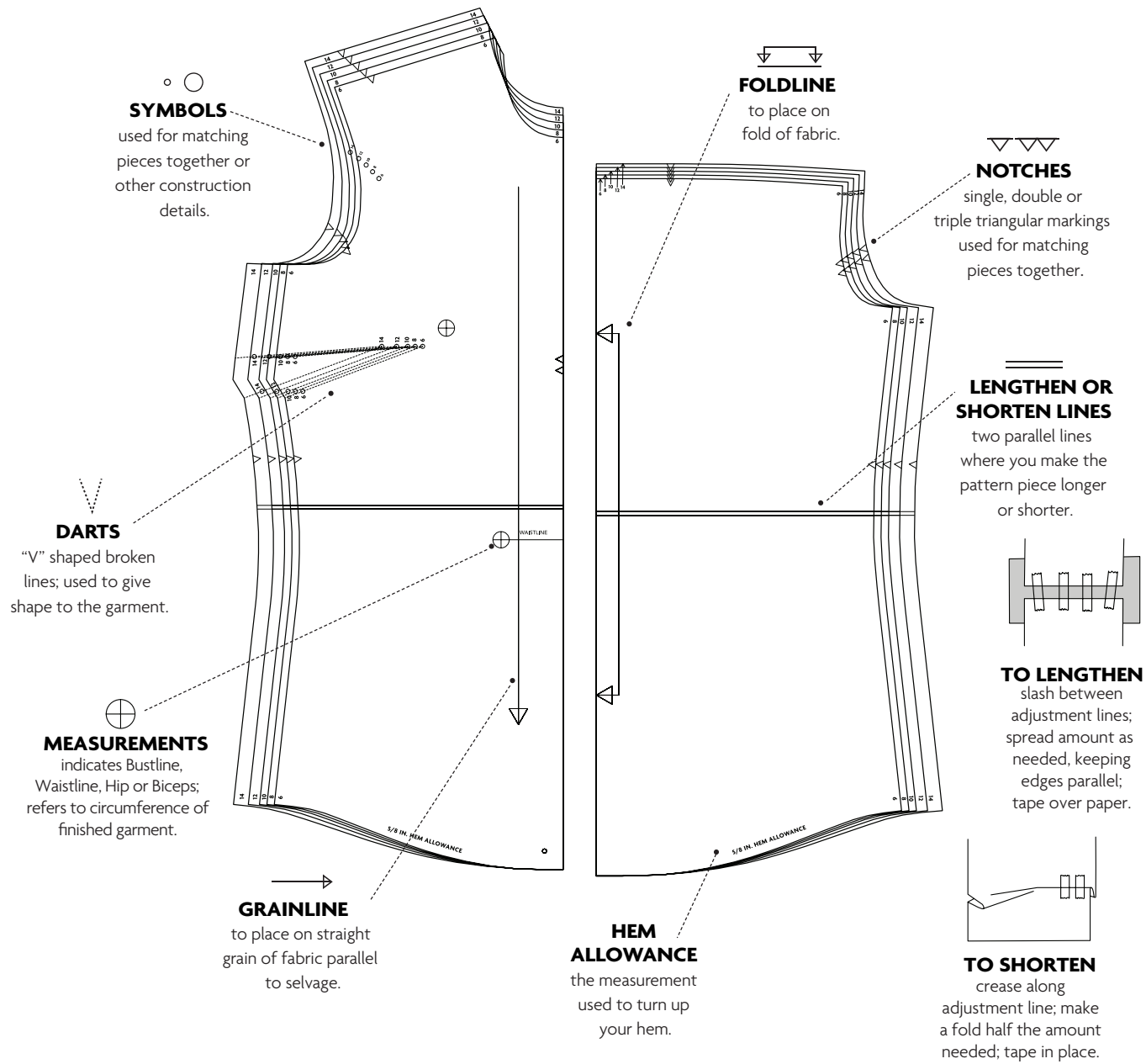
CUTTING AND MARKING

- > **SHRINK FABRIC** if not labeled pre-shrunk. Press.
- > **CIRCLE LAYOUT** for View, Size, Fabric Width.
- > Use **WITH NAP** layout for fabrics with one-way designs, nap, pile or surface shading. Because most knits have surface shading, a with nap layout is used.
- > For **DOUBLE THICKNESS (WITH FOLD)**, fold fabric with right sides together.
- > ***DOUBLE THICKNESS (WITHOUT FOLD)**, for fabrics with nap, fold fabric crosswise, right sides together. Mark as shown. Cut along crosswise fold of fabric (A). Turn upper layer 180° so arrows go in same direction and place over lower layer, right sides together (B).
- > For **SINGLE THICKNESS**, place fabric right side up. (For Fur Pile fabrics, place pile side down.)



- > Before **CUTTING**, place all pieces on fabric according to layout. Pin.
(Layouts show approximate position of pattern pieces; position may vary according to your pattern size.)
 - > ★ Cut other pieces first, allowing enough fabric to cut this piece. Open fabric. Cut piece on single layer of fabric with piece face up on right side of fabric.
 - > Cut accurately, cutting notches outward.
 - > Before removing pattern, **TRANSFER MARKINGS** and lines of construction to **WRONG SIDE** of fabric, using Pin and Chalk Pencil method or Tracing Paper and Dressmaker Wheel. Markings needed on right side of fabric should be thread traced.
- NOTE:** Broken-line boxes (a! b! c!) in layouts represent pieces cut by measurements provided.
- > Prewash your fabric using a method that's suitable for the fabric type.
 - > Fold fabric with right sides together, matching **SELVAGES**.
 - > Pin your pattern pieces to the fabric as shown below and cut them out using a sharp pair of dressmaker's shears.

PATTERN MARKINGS



CUP SIZES C,D,DD (WOMENS')

To achieve the best results; before you cut your fabric, choose the

UPPER FRONT
pattern piece for your particular **cup size**.

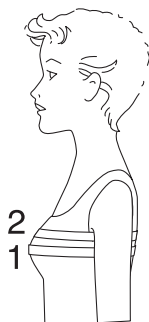
HOW TO CHECK YOUR CUP SIZE:

BUST (1)

Measure straight across the back and over the fullest part
of your bust _____

HIGH BUST (2)

Measure across the back high up under the arms and
across the top of your bust _____



SELECT PATTERN PIECES

C (WOMEN'S) CUP: If your bust is up to 1" (2.5cm) larger than your high bust, use pattern pieces 1C, 2C and 3C.

D (WOMEN'S) CUP: If your bust is 1" to 2" (2.5cm to 5cm) larger than your high bust, use pattern pieces 1D, 2D and 3D.

DD (WOMEN'S) CUP: If your bust is 2" to 3" (5cm to 7.5cm) larger than your high bust, use pattern pieces 1DD, 2DD and 3DD.

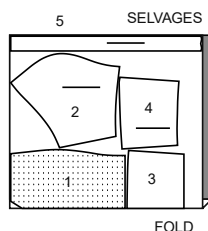
To customize your look like Needleandthebelle, see Sew Along video.

CUTTING LAYOUTS

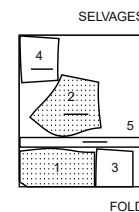
CROP TOP A

use pieces: 1 (C,D,DD) 2 (C,D,DD) 3 4 5

45" (115 cm)
with nap
all sizes



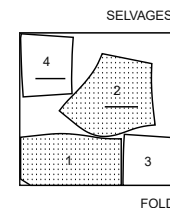
60" (150 cm)
with nap
all sizes



LINING

use pieces: 1 (C,D,DD) 2 (C,D,DD) 3 4

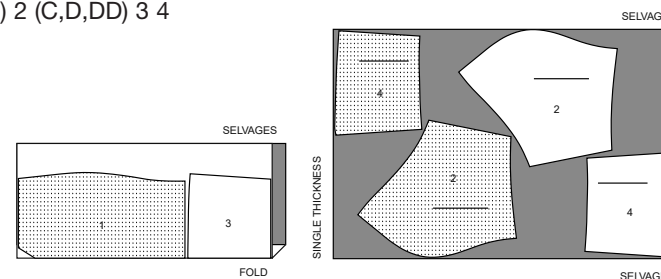
45" (115 cm)
without nap
all sizes



INTERFACING

use pieces: 1 (C,D,DD) 2 (C,D,DD) 3 4

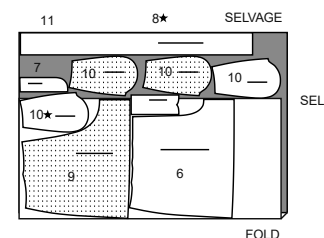
20" (51 cm)
all sizes



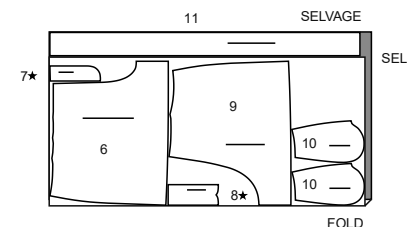
SHORTS B

use pieces: 6 7 8 9 10 11

60" (150 cm)
with nap
sizes 16W 18W 20W 22W 24W 26W

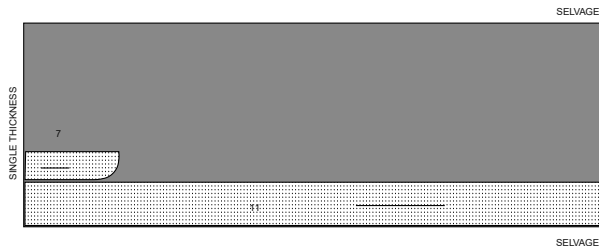


60" (150 cm)
with nap
sizes 28W 30W 32W 34W 36W 38W

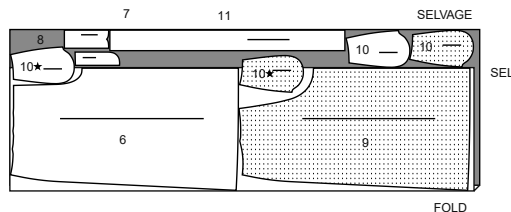
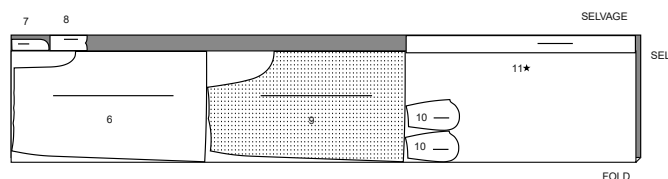


INTERFACING B,C

use pieces: 7 11

20" (51 cm)
all sizes**PANTS C**

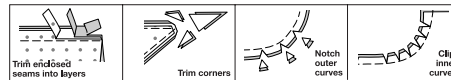
use pieces: 6 7 8 9 10 11

60" (150 cm)
with nap
sizes 16W 18W 20W 22W 24W 26W 28W 30W60" (150 cm)
with nap
sizes 32W 34W 36W 38WPATTERN PIECES WILL BE IDENTIFIED
BY NUMBERS THE FIRST TIME THEY ARE USED.**SEWING INFORMATION****5/8" (1.5cm) SEAM ALLOWANCES
ARE INCLUDED,**
(unless otherwise indicated)**ILLUSTRATION SHADING KEY**

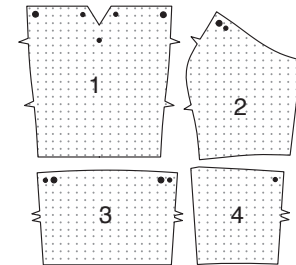
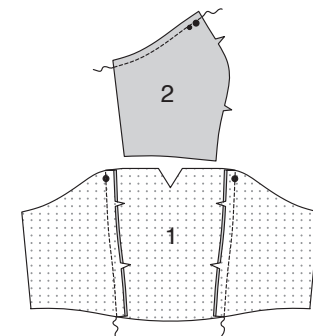
Right Side	Wrong Side	Interfacing	Lining	Underlining

Pin or baste seams, right side together, matching notches. Fit garment before stitching major seams.

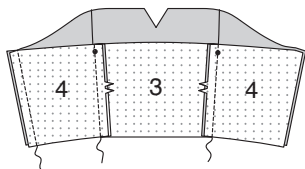
Press seam allowances flat; then open unless otherwise stated. Clip where necessary so they lie flat.

**GLOSSARY**Sewing terms appearing in **BOLD TYPE** in Sewing Instructions are explained below.**EDGE STITCH** – Stitch close to finished edge or seam.**FINISH** – Stitch 1/4" (6mm) from raw edge.**SLIPSTITCH** - Slide needle through a folded edge, then pick up a thread of underneath fabric.**TOPSTITCH** – On outside, stitch 1/4" (6mm) from edge, seam, or previous stitching.**UNDERSTITCH** – Open out facing or underside of garment; stitch to seam allowance close to seam.

@needleandthebelle

SEWING DIRECTIONS**CROP TOP A****INTERFACING****1.** Pin interfacing to wrong side of FRONT (1), SIDE FRONT (2), BACK (3), and SIDE BACK (4). Fuse, following manufacturer's instructions.**TOP****2. STAYSTITCH** upper edge of SIDE FRONT (2) sections. With right sides together and raw edges even, pin FRONT (1) to side front at side front edges, matching notches. Stitch. Press seam toward front.

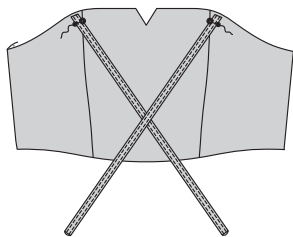
- 3.** With right sides together and raw edges even, pin BACK (3) to SIDE BACK (4) at side back edges, matching notches. Stitch. Press seam toward back. Stitch front to back at right side edges.



- 4.** To make optional shoulder straps, press under 3/8" (1cm) on long edges of SHOULDER STRAP (5) sections. Fold strap in half lengthwise, bringing pressed edges together. Stitch close to both long edges.



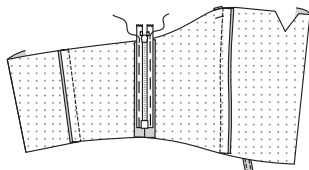
- 5.** On outside, pin strap to side front, matching small and large dots, having raw edges even. Baste.



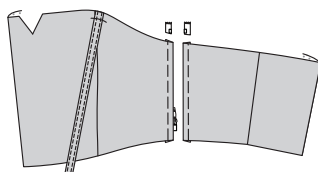
ZIPPER AND LINING

NOTE: The length of the closed separating zipper is longer than the opening, extending above the upper edge of the top. It will be shortened later in the instructions.

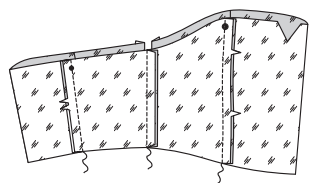
- 6.** Press under 5/8" (1.5cm) on left side edges. Pin closed zipper under pressed edges, placing lower end of zipper a scant 3/4" (2cm) from lower edge and having pressed edges meet at center of zipper. Hand-baste. Baste 3/8" (1cm) from pressed edge.



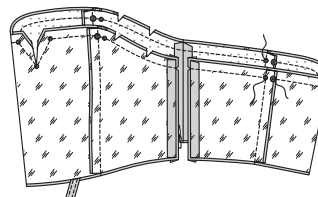
- 7.** Having basted the zipper in place, separate the zipper and cut off the excess zipper tape at upper edge. (The lining will act as the top stop for the zipper after it is applied.) Keep the pull tab in the down position until after the lining is stitched in place.



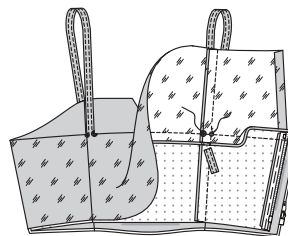
- 8.** Stitch seams of lining same as for top. Press under 3/4" (2cm) on left side edges.



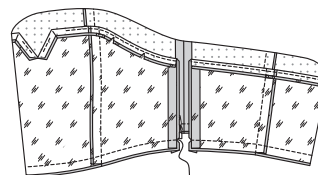
- 9.** With right sides together, pin lining to upper edges of top, matching centers, seams, small and large dots, having raw edges even. Stitch upper edge along stitching lines then along seam lines, leaving openings in upper back edge between small and large dots for straps. Trim seam; clip curves.



- 10.** Turn lining to inside; press. Try on top. Insert ends of straps into openings at upper back edge, matching small and large dots. Adjust to fit comfortably. Open out back lining. Stitch opening closed, connecting to previous stitching. Trim ends of straps even with seam allowance.

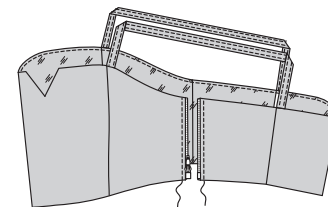


- 11. UNDERSTITCH** the lining as far as possible. With right sides together, pin lining to lower edge of top, matching seams, having raw edges even. Stitch. Trim seam.



- 12.** Turn top right side out through left side seam opening; press. On inside, pin pressed edge of lining to zipper tape. Using an adjustable zipper foot, on outside, stitch 1/4" (6mm) from pressed edge of lining on the inside. Remove basting.

TIP - To avoid bumpy stitching around the tab and slider, stop stitching just before you get to the slider. Leaving the needle in the fabric, raise the presser foot and pull the slider up above the needle. Lower the presser foot and continue stitching.

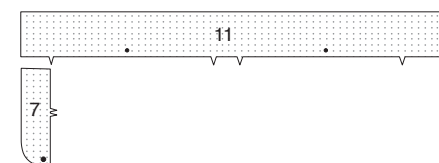


SHORTS B; PANTS C

NOTE: Under each sub-heading, the first View will be illustrated, unless otherwise indicated.

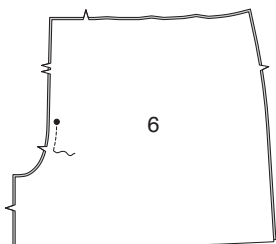
INTERFACING

- 1.** Pin interfacing to wrong side of FLY FACING (7) and WAISTBAND (11) sections. Fuse, following manufacturer's instructions.

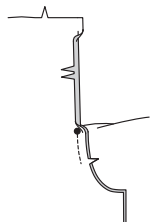


FLY FRONT OPENING

2. To construct the fly front, stitch FRONT (6) sections together at center front between large dot and notch.

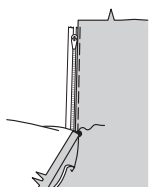


3. Turn in left front opening edge along foldline; press.

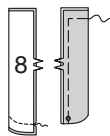


NOTE: The length of the closed zipper may be longer than the opening, extending below the large dot on the front. It will be shortened later in the instructions.

4. Place closed zipper (face up) under left front opening edge, having pressed edge close to zipper teeth and zipper top stop a scant 3/4" (2cm) from upper edge. Using a zipper foot, baste close to pressed edge.



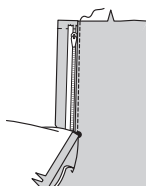
5. With right sides together, fold FLY (8) along foldline. Stitch lower edge. Trim. Turn. Press. Baste raw edges.



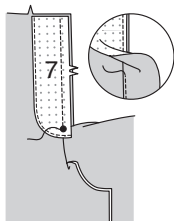
6. On inside, pin fly to left front opening edge (over zipper), matching notches and small dots, having raw edges even. Baste along previous basting for zipper.



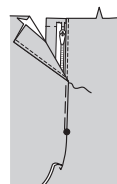
7. On outside, using a zipper foot, stitch close to pressed edge of front through all layers.



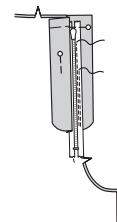
8. FINISH outer edge of fly facing. Pin FLY FACING (7) to right front opening edge, matching notches, and large dots. Stitch, ending at large dot. Trim. **UNDERSTITCH** fly facing. Turn facing to inside.



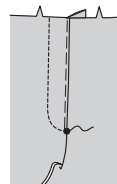
9. Lap right front over left, matching centers. Baste close to edge through all thicknesses.



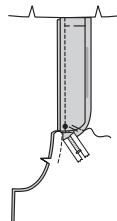
10. Pin fly out of the way. Open out fly facing. Pin remaining zipper tape to fly facing, keeping right front free. Using a zipper foot, stitch in place close to zipper teeth and along center of zipper tape.



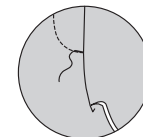
11. Turn facing down. On outside, stitch right front along stitching line, keeping left fly free.



12. Turn fly back in place. On inside, hand tack fly and facing together at lower edge, as shown. Trim away excess zipper tape even with lower edge of fly, if needed.

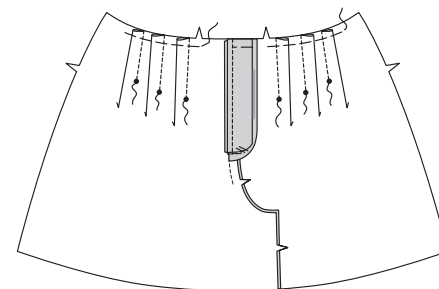


13. If desired, on outside, machine-stitch a bar tack across lower end of fly through all thicknesses.

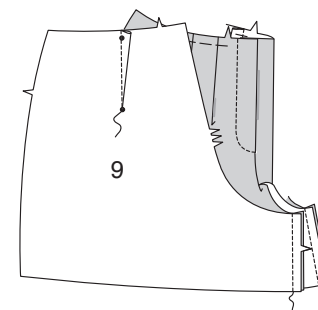


FRONT AND BACK

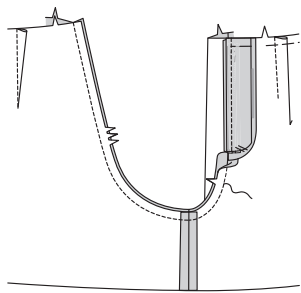
14. To make pleats on front, on inside, bring broken lines together. Stitch along broken lines. Press pleats away from center. Baste across upper edge.



15. Make darts on BACK (9). Stitch front to back at inner leg edges.



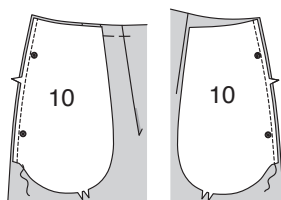
16. With right sides together, pin center seam, matching inner leg seams and notches. Stitch from upper edge of back to front notch, connecting to previous stitching. To reinforce the seam, stitch again over first stitching.



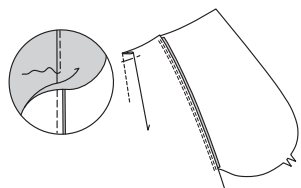
POCKET

17. Apply pockets to side edges of front and back as follows:

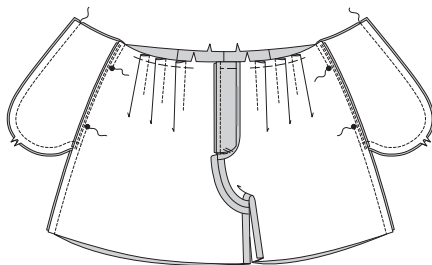
With right sides together, pin pocket (10) to garment, matching large dots, having raw edges even. Stitch in 3/8" (1cm) seam.



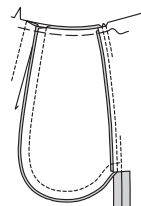
18. UNDERSTITCH the front pocket. Press seam toward pocket, pressing pocket out.



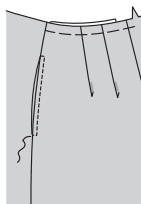
19. Pin front to back at side seams, matching large dots. Stitch side seams, leaving an opening between large dots. Stitch pocket edges together from side seam to upper edge.



20. Clip garment back seam allowance below pocket. Press seam open below clip. Press pocket toward front.

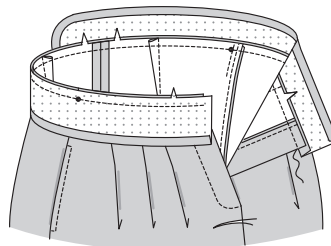


21. On outside, **TOPSTITCH** front pocket, squaring stitching at opening ends.

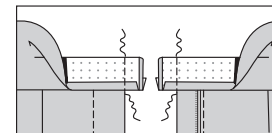


WAISTBAND

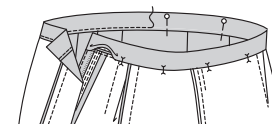
22. Press under 5/8" (1.5cm) on long unnotched edge of **WAISTBAND** (11); trim to 1/4" (6mm). With right sides together, pin garment to band, matching centers and notches, placing side seams at small dots. Stitch. Trim seam; press toward band.



23. Fold band with right sides together. Stitch ends. Trim seams.

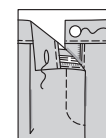


24. Turn band; press. Pin pressed edge of band over seam, placing pins on outside. On outside, **EDGESTITCH** waistband close to seam, catching in pressed edge of facing on the inside.

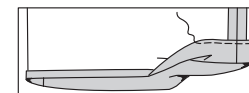


FINISHING

25. Make buttonhole in band at marking. Sew button to band at small dot.



26. Mark length. Press up hem along marking. Mark depth of hem; trim evenly. Press under 1/4" (6mm) on raw edge. Stitch close to inner pressed edge.





Congrats!


You've completed your sewing adventure!

SHARE YOUR look!



Post your pattern and tag us at
@knowmepatterns and use #knowmepatterns
for a chance to be featured on our social media!

Look for more Know Me PDF patterns at **[SomethingDelightful.com/know-me/](https://www.somethingdelightful.com/know-me/)**

 1-800-255-2762

© 2023 KnowMe® an IG Design Group Americas, Inc. brand. | All Rights Reserved.
Sold for individual home use only and not for commercial or manufacturing purposes.