

@gwenstella.made



>> MISSES' DRESS  
 SKILL LEVEL: AVERAGE

PDF  
 ↓  
**PDF PATTERNS**

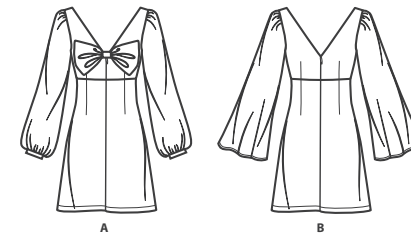
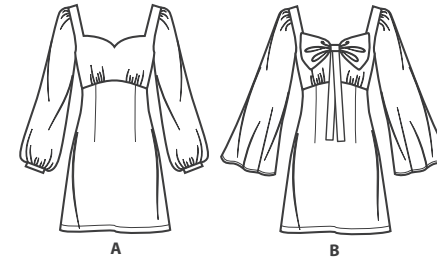
### THINGS YOU NEED:

> **A,B:** One 18" (46cm) invisible zipper. **Also for A:** One medium snap.

### SUGGESTED FABRICS:

> Cotton Blends, Crepe, Double Georgette, Rayon, Silky Types.

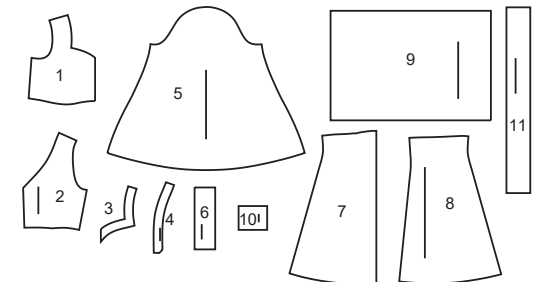
**Lining:** Polyester, Cotton Blends. **Interfacing:** Lightweight Fusible.



Your printed tile pieces should be assembled before you move on to this step!

### PIECES (11)

- 1 Bodice Front-A,B
- 2 Bodice Back-A,B
- 3 Front Neck Interfacing-A,B
- 4 Back Neck Interfacing-A,B
- 5 Sleeve-A,B
- 6 Sleeve Band-A
- 7 Skirt Front-A,B
- 8 Skirt Back-A,B
- 9 Bow-A,B
- 10 Knot-A,B
- 11 Bow End-B





## FINISHED GARMENT MEASUREMENTS

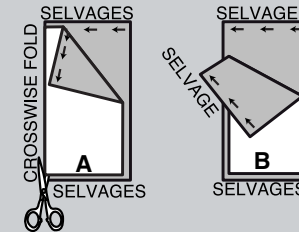
SIZES	8	10	12	14	16	18	20	22	24	26	
<b>A,B BUST</b>	35	36	37 ½	39 ½	41 ½	43 ½	45 ½	47 ½	49 ½	51 ½	in.
	89	91	95	100	105	110	116	121	126	131	cm.
<b>A,B WAIST</b>	26 ½	27 ½	29	31	33	35	37	39	41	43	in.
	67	70	74	79	84	89	94	99	104	109	cm.
<b>A,B HIP</b>	42	43	44 ½	46 ½	48 ½	50 ½	52 ½	54 ½	56 ½	58 ½	in.
	107	109	113	118	123	128	133	138	144	149	cm.
<b>WIDTH, LOWER EDGE</b>											
<b>DRESS A,B</b>	53 ½	54 ½	56	58	60	62	64	66	68	70	in.
	136	138	142	147	152	157	163	168	173	178	cm.
<b>FINISHED BACK LENGTH FROM BASE OF NECK</b>											
<b>DRESS A,B</b>	33 ¾	34	34 ¼	34 ½	34 ¾	35	35 ¼	35 ½	35 ¾	36	in.
	86	87	87	88	88	89	90	90	91	91	cm.

## BODY MEASUREMENTS

SIZES	8	10	12	14	16	18	20	22	24	26	
<b>BUST</b>	31½	32½	34	36	38	40	42	44	46	48	in.
	80	83	87	92	97	102	107	112	117	122	cm.
<b>WAIST</b>	24	25	26½	28	30	32	34	37	39	41	in.
	61	64	67	71	76	81	87	94	99	104	cm.
<b>HIP-9" (23CM) BELOW WAIST</b>	33½	34½	36	38	40	42	44	46	48	50	in.
	85	88	92	97	102	107	112	117	122	127	cm.
<b>BACK-NECK TO WAIST</b>	15¾	16	16¼	16½	16¾	17	17¼	17½	17¾	18	in.
	40	40.5	41.5	42	42.5	43	44	44.5	45	46	cm.

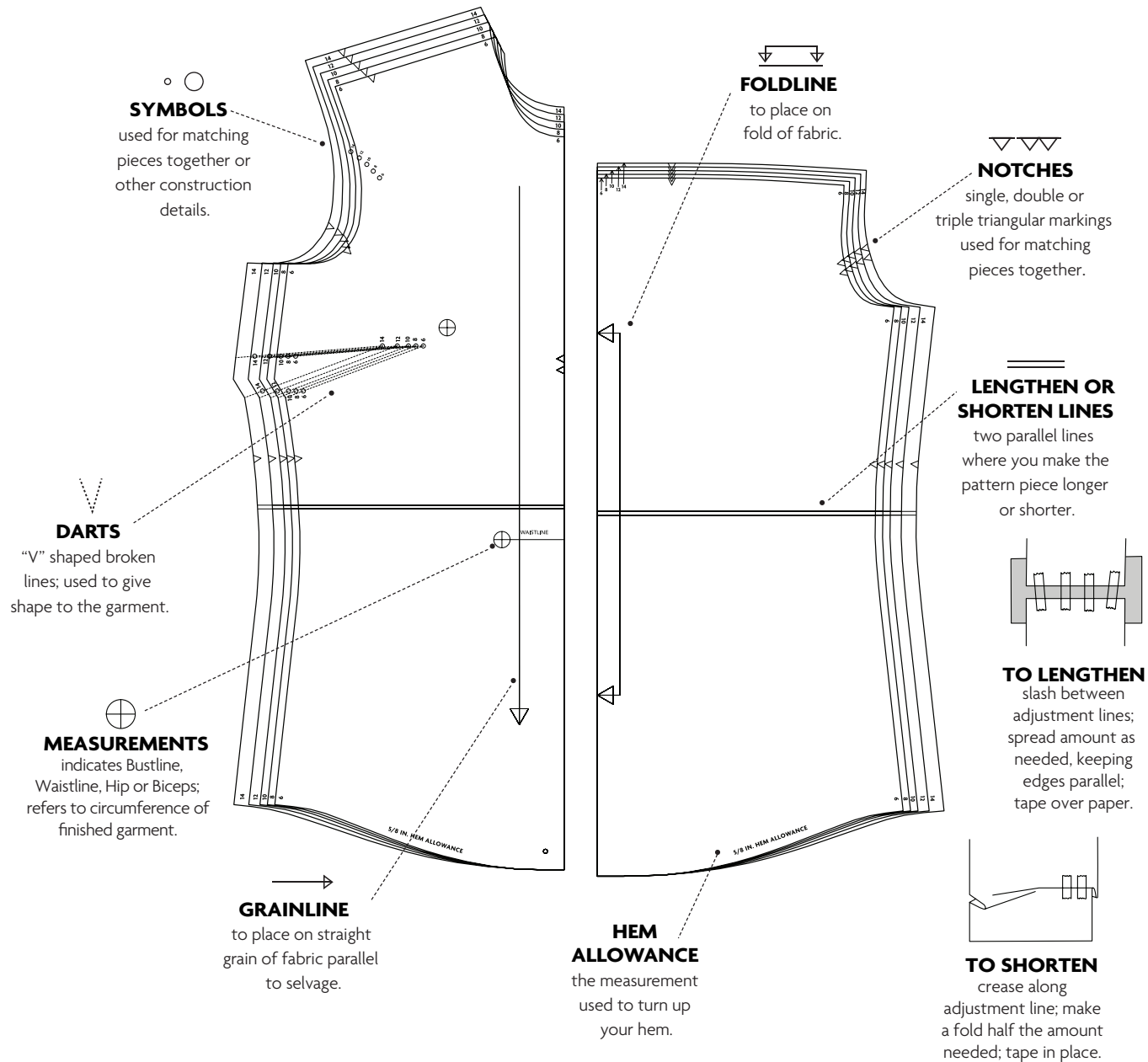
## CUTTING AND MARKING

- > **SHRINK FABRIC** if not labeled pre-shrunk. Press.
- > **CIRCLE LAYOUT** for View, Size, Fabric Width.
- > Use **WITH NAP** layout for fabrics with one-way designs, nap, pile or surface shading. Because most knits have surface shading, a with nap layout is used.
- > For **DOUBLE THICKNESS (WITH FOLD)**, fold fabric with right sides together.
- > \***DOUBLE THICKNESS (WITHOUT FOLD)**, for fabrics with nap, fold fabric crosswise, right sides together. Mark as shown. Cut along crosswise fold of fabric (A). Turn upper layer 180° so arrows go in same direction and place over lower layer, right sides together (B).
- > For **SINGLE THICKNESS**, place fabric right side up. (For Fur Pile fabrics, place pile side down.)



- > Before **CUTTING**, place all pieces on fabric according to layout. Pin.  
(Layouts show approximate position of pattern pieces; position may vary according to your pattern size.)
- > ★ Cut other pieces first, allowing enough fabric to cut this piece. Open fabric. Cut piece on single layer of fabric with piece face up on right side of fabric.
- > Cut accurately, cutting notches outward.
- > Before removing pattern, **TRANSFER MARKINGS** and lines of construction to **WRONG SIDE** of fabric, using Pin and Chalk Pencil method or Tracing Paper and Dressmaker Wheel. Markings needed on right side of fabric should be thread traced.  
**NOTE:** Broken-line boxes (a! b! c!) in layouts represent pieces cut by measurements provided.
- > Prewash your fabric using a method that's suitable for the fabric type.
- > Fold fabric with right sides together, matching **SELVAGES**.
- > Pin your pattern pieces to the fabric as shown below and cut them out using a sharp pair of dressmaker's shears.

## PATTERN MARKINGS

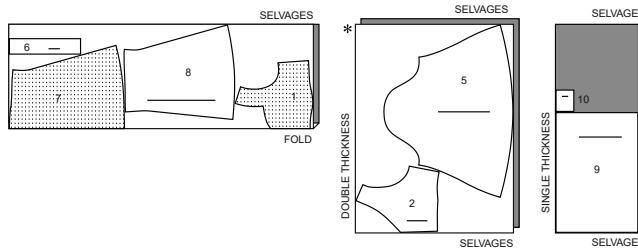


**CUTTING LAYOUTS**

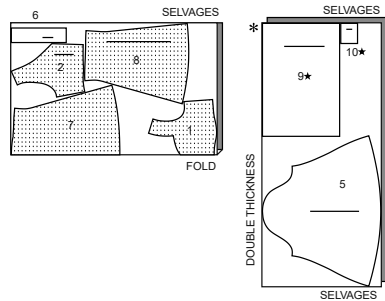
**DRESS A**

use pieces: 1,2,5,6,7,8,9,10

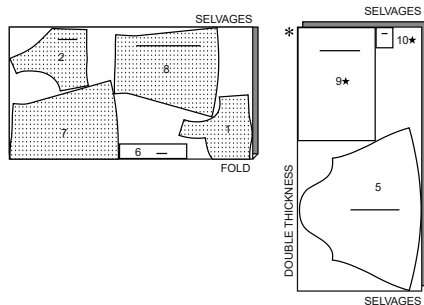
45" (115 cm)  
with nap  
all sizes



60" (150 cm)  
with nap  
sizes 8 10 12 14 16 18



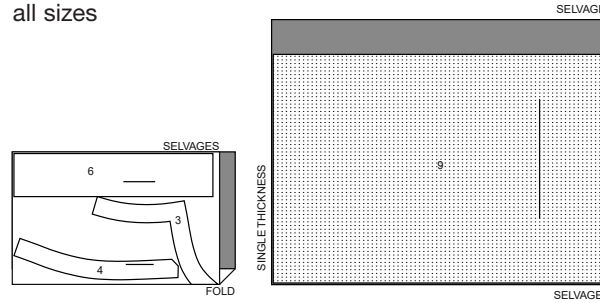
60" (150 cm)  
with nap  
sizes 20 22 24 26



**INTERFACING A**

use pieces: 3,4,6,9

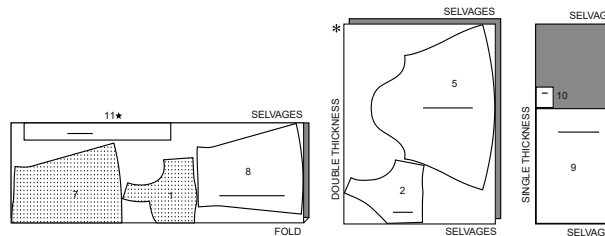
20" (51 cm)  
all sizes



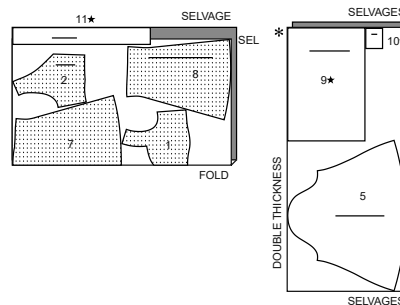
**DRESS B**

use pieces: 1,2,5,7,8,9,10,11

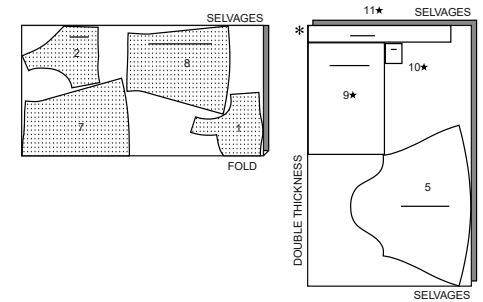
45" (115 cm)  
with nap  
all sizes



60" (150 cm)  
with nap  
sizes 8 10 12 14 16 18



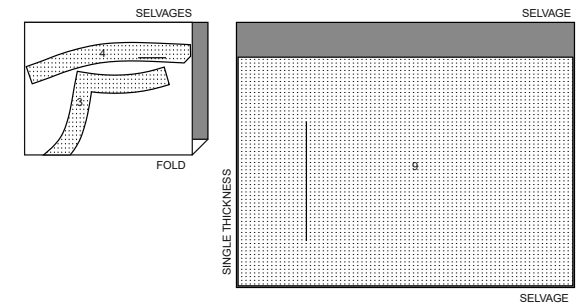
60" (150 cm)  
with nap  
sizes 20 22 24 26



**INTERFACING B**

use pieces: 3,4,9

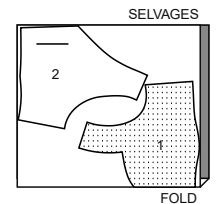
20" (51 cm)  
all sizes



**LINING A,B**

use pieces: 1,2

45" (115 cm)  
without nap  
all sizes



PATTERN PIECES WILL BE IDENTIFIED BY NUMBERS THE FIRST TIME THEY ARE USED.

## SEWING INFORMATION

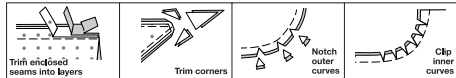
**5/8" (1.5cm) SEAM ALLOWANCES ARE INCLUDED,**  
(unless otherwise indicated)

### ILLUSTRATION SHADING KEY

Right Side	Wrong Side	Interfacing	Lining	Underlining

Pin or baste seams, right side together, matching notches. Fit garment before stitching major seams.

Press seam allowances flat; then open unless otherwise stated. Clip where necessary so they lie flat.



## GLOSSARY

Sewing terms appearing in **BOLD TYPE** in Sewing Instructions are explained below.

**GATHER** - Stitch along seamline and again 1/4" (6mm) away in seam allowance, using long machine stitches. Pull thread ends when adjusting to fit.

**NARROW HEM** - Turn in hem; press, easing in fullness if necessary. Open out hem. Turn in again so raw edge is along crease; press. Turn in along crease; stitch.

**SLIPSTITCH** - Slide needle through a folded edge, then pick up a thread of underneath fabric.

**STAYSTITCH** - Stitch 1/8" (3mm) from seamline in seam allowance [usually 1/2" (1.3cm) from raw edge].

**TOPSTITCH** - On outside, stitch 1/4" (6mm) from edge, seam, or previous stitching, using presser foot as guide, or stitch where indicated in instructions.

**UNDERSTITCH** - Open out facing or underside of garment; stitch to seam allowance close to seam.



@gwenstella.made

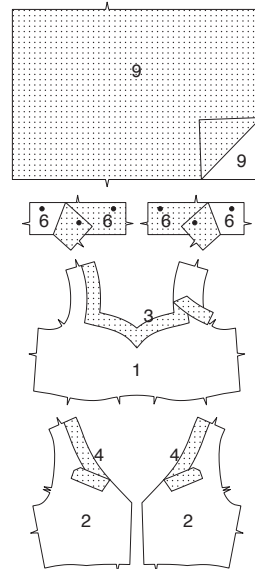
## SEWING DIRECTIONS

### DRESS A, B

**NOTE:** Under each sub-heading, the first View will be illustrated, unless otherwise indicated.

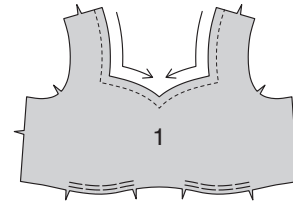
### INTERFACING

1. Pin Interfacing to wrong side of each matching fabric section. Fuse, following manufacturer's instructions.

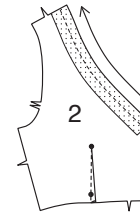


## BODICE

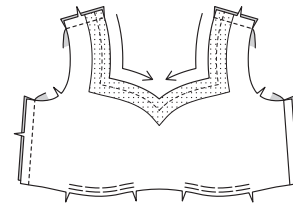
2. **STAYSTITCH** neck edge of **BODICE FRONT** (1). **GATHER** lower edge between the notches.



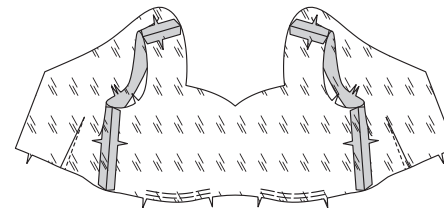
3. **STAYSTITCH** neck edge of **BODICE BACK** (2). Stitch dart. Press dart toward center.



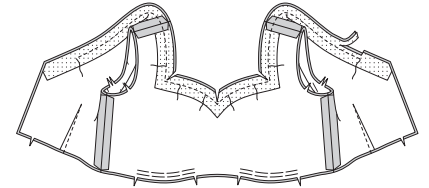
4. Stitch bodice front to bodice back at shoulder and side edges.



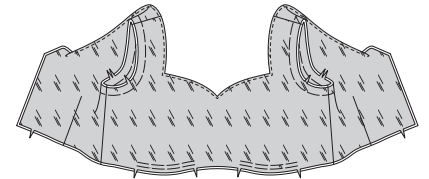
5. Stitch bodice lining in the same manner as bodice.



6. Pin lining to bodice at neck edge. Stitch along stitching lines, pivoting with needle in fabric at corners. Stitch to within 3" (7.5cm) of back edges. Trim seam; clip corners.

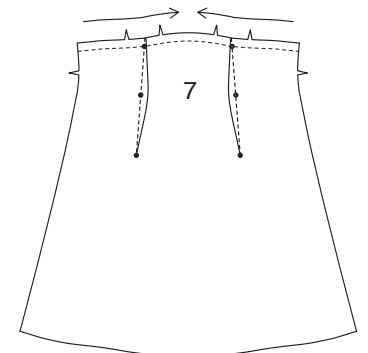


7. **UNDERSTITCH** the lining. Turn lining to inside. Baste armhole edges together.

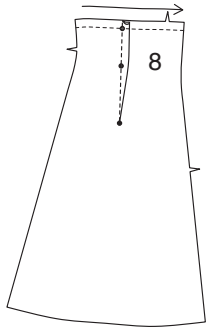


## SKIRT

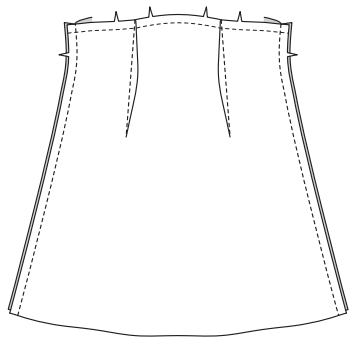
8. **STAYSTITCH** upper edge of **SKIRT FRONT** (7). Stitch darts. Press darts toward center.



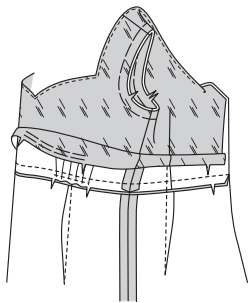
**9. STAYSTITCH** upper edge of SKIRT BACK (8). Stitch dart. Press dart toward center.



**10.** Stitch skirt front to skirt back at side seams.

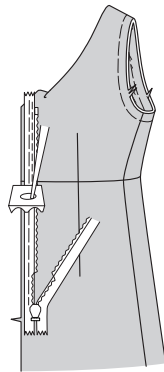


**11.** Open out lining. Pin bodice to skirt, matching notches and seams, pulling up gathering stitches to fit. Stitch. Press seam toward skirt.

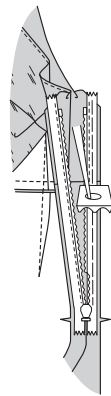


**NOTE:** Use special invisible zipper foot when stitching invisible zipper.

**12.** Open the zipper and press the tape flat. Keep the free upper edges of back lining out of the way. On outside, pin right side of the zipper face down on the right side of the zipper opening. Have the coil along the seam line, the tape within the seam allowance and the top stop 3/4" (2cm) below upper edge, as shown. Hand-baste along center of tape. Position zipper foot over coil. Stitch along tape to notch. Back-stitch to reinforce.

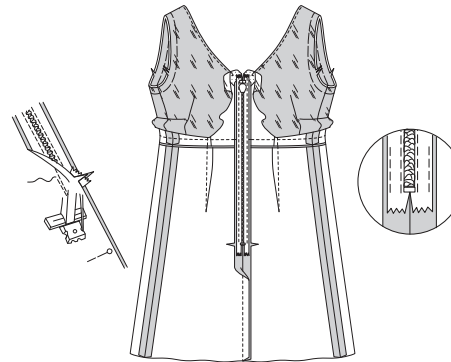


**13.** Pin the remaining half of the zipper to the left side of the zipper opening in same manner. Hand-baste along the center of tape. Position zipper foot at the top of the zipper with left groove over the coil. Stitch along tape to the notch. Back-stitch to reinforce.

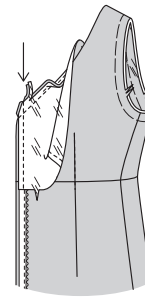


**14.** Close zipper and check that it is invisible from the outside. Pull the free ends of the zipper tape away from the seam allowance. Pin remaining center back seam together below zipper. Position zipper foot all the way to the left so the needle goes down through the outer notch of the foot. Start stitching seam 1/4" (6mm) above the lowest stitch and slightly to the left. Stitch remainder of seam to hem.

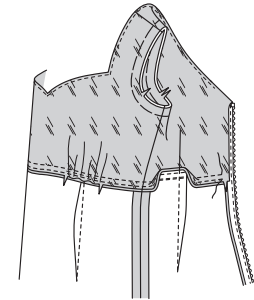
If you prefer, open out each seam allowance at end of zipper and stitch tape to seam allowance.



**15.** Open out back opening edges of dress, rolling the zipper teeth away from the opening edge. Turn back lining to outside. With right sides together, pin back and back neck edges of dress and lining together. Stitch remaining back neck edges, connecting to previous stitching. Trim neck seam. Stitch across lining 1/2" (1.3cm) from back edges, keeping zipper teeth free. Trim corner. Do not trim center back edges.

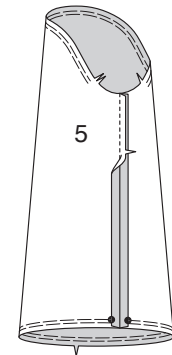


**16.** Turn lining to inside, press. On inside, pin lower edge of lining to skirt, matching seams and notches, pulling up gathering stitches. Stitch lining to waist seam at previous stitching between back notches, or as far as possible. Stitch again 3/8" (1cm) from seam within the seam allowance.

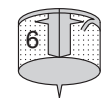


## SLEEVE A

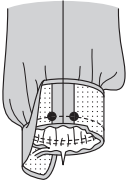
**17. GATHER** top of SLEEVE (5) between notches and lower edge of sleeve between large dots. Stitch underarm seam.



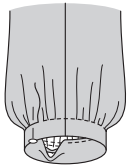
**18.** Stitch ends of SLEEVE BAND (6) together. Turn under 1/2" (1.3cm) on unnotched edge. Trim to 1/4" (6mm).



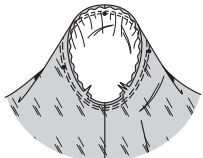
**19.** With right sides together, pin sleeve band to lower edge of sleeve, matching seams and large dots. Pull up gathering stitches to fit. Baste. Stitch seam. Trim seam. Press seam toward band.



**20.** Fold band along fold line. On inside, pin pressed edge of band over seam, placing pins on outside. On outside, stitch band close to seam, catching in pressed edge of band on inside.

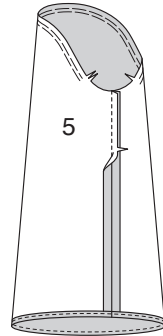


**21.** Turn sleeve right side out. Hold dress wrong side out with armhole toward you. With right sides together, pin sleeve to armhole edge with center small dot at shoulder seam, matching underarm seams, notches and remaining small dots. Pull up gathering stitches to fit. To distribute fullness evenly, slide fabric along bobbin threads. Baste. Stitch. Stitch again 1/8" (3mm) from first stitching. Trim seam below notches close to stitching. Press only the seam allowance.

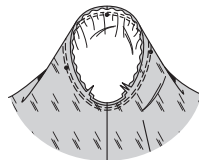


## SLEEVE B

**22. GATHER** top of SLEEVE (5) between notches. Stitch underarm seam. Make a 5/8" (1.5cm) **NARROW HEM** on lower edge.

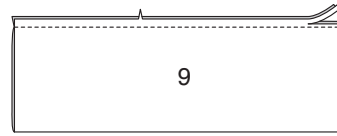


**23.** Turn sleeve right side out. Hold dress wrong side out with armhole toward you. With right sides together, pin sleeve to armhole edge with center small dot at shoulder seam, matching underarm seams, notches and remaining small dots. Pull up gathering stitches to fit. To distribute fullness evenly, slide fabric along bobbin threads. Baste. Stitch. Stitch again 1/8" (3mm) from first stitching. Trim seam below notches close to stitching. Press only the seam allowance.

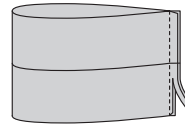


## BOW

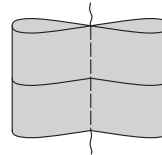
**24.** Fold BOW (9) in half, lengthwise, with right sides together. Stitch notched edge. Trim seam.



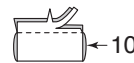
**25.** Turn bow right side out, bringing seam to center on underside; press. With right sides together, stitch across ends of bow. Trim seam.



**26.** Turn bow. Hand-gather along center line through all thicknesses.



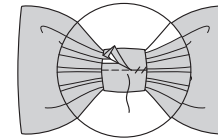
**27.** Fold KNOT (10) in half, matching notches, with right sides together. Stitch. Trim seam.



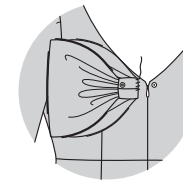
**28.** Turn knot right side out, bringing seam to center on underside; press. Baste across raw edges. Trim to 1/4" (6mm).



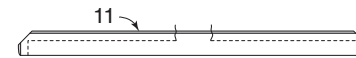
**29.** Pull up gathering stitches on center of bow and knot thread ends. Place knot around center of bow, turning under and lapping one end on underside. **SLIPSTITCH** ends securely catching in underside of bow.



**30. FOR VIEW A:** Pin bow to center back at neck edge (over zipper pull). Tack knot to left side of dress, securely. Sew the ball section of a snap to the right side of knot on underside, and the socket section to neck edge of dress under it.



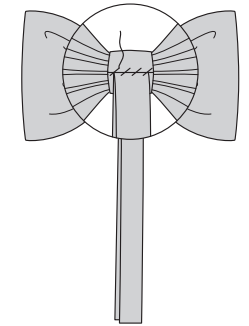
**31. FOR VIEW B:** Fold BOW END (11) in half lengthwise. Stitch, leaving an opening on long edge for turning. Trim seam and corners.



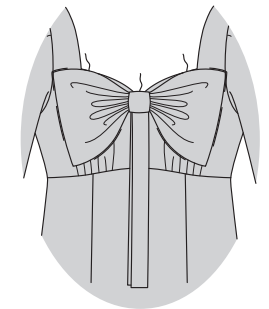
**32.** Turn bow end; press. **SLIPSTITCH** opening closed.



**33.** Fold bow end in half at center line; press. Hand-sew pressed edge of bow end to underside of knot.

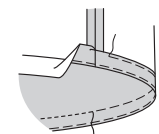


**34.** Pin bow to center front at neck edge. Tack in place securely.



## FINISHING

**35.** Turn up hem. Baste close to fold. Turn under raw edge 1/4" (6mm); press. Baste close to upper pressed edge. **TOPSTITCH** hem in place along upper basting, as shown.





# Congrats!

You've completed your sewing adventure!


---

## SHARE YOUR look!



Post your pattern and tag us at  
@knowmepatterns and use #knowmepatterns  
for a chance to be featured on our social media!

Look for more Know Me PDF patterns at [SomethingDelightful.com/know-me/](https://www.somethingdelightful.com/know-me/)

 1-800-255-2762

© 2023 KnowMe® an IG Design Group Americas, Inc. brand. | All Rights Reserved.  
Sold for individual home use only and not for commercial or manufacturing purposes.