



@sinsofmany



>> MEN'S PULLOVER JACKET
AND PANTS
SKILL LEVEL: AVERAGE



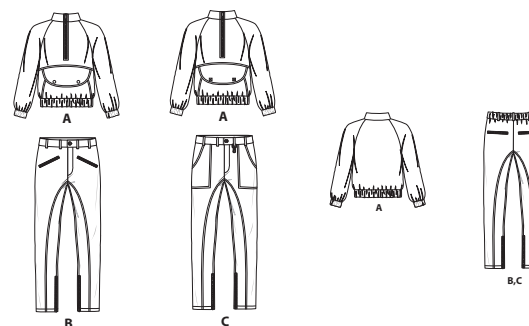
PDF PATTERNS

THINGS YOU NEED:

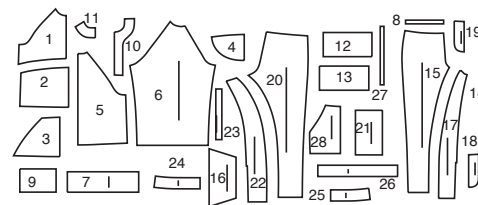
- > **A:** One 12" (30cm) zipper, two 5/8" (1.5cm) snaps or two pieces of 5/8" x 3/4" (1.5cm x 2cm) hook and loop tape, 7/8 yd. (0.8m) of 2" (5cm) elastic, 1 5/8 yds. (1.5m) of 2 1/2" (6cm) elastic. **B,C:** Three 7" (18cm) zippers, one 3/4" (2cm) button, two 9" (23cm) zippers, 3/4 yd. (0.7m) of 1 1/2" (3.8cm) elastic. **Also for B:** Two additional 7" (18cm) zippers.

SUGGESTED FABRICS:

- > **A:** Cotton Blends, Nylon, Sweatshirt Fleece, Terry Knit, Lightweight Denim. **B,C:** Chino, Corduroy, Cotton Blends, Denim, Linen Blends, Cotton Twill. **Lining:** Cotton Blends, Polyester. **Interfacing:** Lightweight Fusible.



Your printed tile pieces should be assembled before you move on to this step!



PIECES (28)

- | | |
|------------------------------------|-------------------------------|
| 1 Upper Front-A | 15 Front-B,C |
| 2 Lower Front-A | 16 Front Pocket-B |
| 3 Pocket-A | 17 Front Panel-B,C |
| 4 Flap-A | 18 Right Fly-B,C |
| 5 Back-A | 19 Left Fly Facing-B,C |
| 6 Sleeve-A | 20 Back-B,C |
| 7 Sleeve Casing-A | 21 Back Pocket-B,C |
| 8 Elastic Guide For Sleeve-A | 22 Back Panel-B,C |
| 9 Neck Band-A | 23 Carriers-B,C |
| 10 Front Facing-A | 24 Right Front Waistband-B,C |
| 11 Back Neck Facing-A | 25 Left Front Waistband-B,C |
| 12 Front Casing-A | 26 Back Waistband-B,C |
| 13 Back Casing-A | 27 Elastic Guide For Back-B,C |
| 14 Elastic Guide For Lower Edge -A | 28 Pocket-C |

YARDAGE CHARTS

[illegible]

FINISHED GARMENT MEASUREMENTS

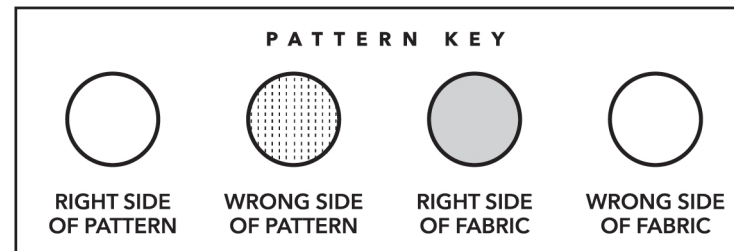
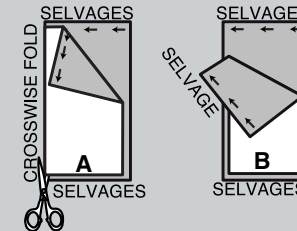
| SIZES | 34 | 36 | 38 | 40 | 42 | 44 | 46 | 48 | 50 | 52 | |
|---|-----------|-----------|-----------|-----------|-----------|-----------|-----------|-----------|-----------|-----------|------|
| A CHEST | 42 ½ | 44 ½ | 46 ½ | 48 ½ | 50 ½ | 52 ½ | 54 ½ | 56 ½ | 58 ½ | 60 ½ | ins. |
| | 108 | 113 | 118 | 123 | 128 | 133 | 138 | 144 | 149 | 154 | cm. |
| A WAIST | 40 ½ | 42 ½ | 44 ½ | 46 ½ | 48 ½ | 50 ½ | 52 ½ | 54 ½ | 56 ½ | 58 ½ | ins. |
| | 103 | 108 | 113 | 118 | 123 | 128 | 133 | 138 | 144 | 149 | cm. |
| B,C HIP | 36 ½ | 38 ½ | 40 ½ | 42 ½ | 44 ½ | 46 ½ | 48 ½ | 50 ½ | 52 ½ | 54 ½ | ins. |
| | 93 | 98 | 103 | 108 | 113 | 118 | 123 | 128 | 133 | 138 | cm. |
| WIDTH, LOWER EDGE | | | | | | | | | | | |
| JACKET A | 44 | 46 | 48 | 50 | 52 | 54 | 56 | 58 | 60 | 62 | ins. |
| | 112 | 117 | 122 | 127 | 132 | 137 | 142 | 147 | 152 | 157 | cm. |
| WIDTH, EACH LEG | | | | | | | | | | | |
| PANTS B,C | 15 | 15 ½ | 16 | 16 ½ | 17 | 17 ½ | 18 | 18 ½ | 19 | 19 ½ | ins. |
| | 38 | 39 | 41 | 42 | 43 | 44 | 46 | 47 | 48 | 49 | cm. |
| FINISHED BACK LENGTH FROM BASE OF NECK | | | | | | | | | | | |
| JACKET A | 25 ¾ | 26 | 26 ¼ | 26 ½ | 26 ¾ | 27 | 27 ¼ | 27 ½ | 27 ¾ | 28 | ins. |
| | 65 | 66 | 67 | 67 | 68 | 69 | 69 | 70 | 70 | 71 | cm. |
| FINISHED SIDE LENGTH FROM WAIST | | | | | | | | | | | |
| PANTS B,C | 41 ¾ | 42 | 42 ¼ | 42 ½ | 42 ¾ | 43 | 43 ¼ | 43 ½ | 43 ¾ | 44 | ins. |
| | 106 | 107 | 107 | 107 | 109 | 109 | 110 | 110 | 111 | 112 | cm. |

BODY MEASUREMENTS

| SIZES | 34 | 36 | 38 | 40 | 42 | 44 | 46 | 48 | 50 | 52 | |
|--------------|-----------|-----------|-----------|-----------|-----------|-----------|-----------|-----------|-----------|-----------|------|
| CHEST | 34 | 36 | 38 | 40 | 42 | 44 | 46 | 48 | 50 | 52 | ins. |
| | 87 | 92 | 97 | 102 | 107 | 112 | 117 | 122 | 127 | 132 | cm. |
| WAIST | 28 | 30 | 32 | 34 | 36 | 39 | 42 | 44 | 46 | 48 | ins. |
| | 71 | 76 | 82 | 87 | 92 | 99 | 107 | 112 | 117 | 122 | cm. |
| HIP | 35 | 37 | 39 | 41 | 43 | 45 | 47 | 49 | 51 | 53 | ins. |
| | 89 | 94 | 99 | 104 | 109 | 115 | 119 | 124 | 128 | 135 | cm. |

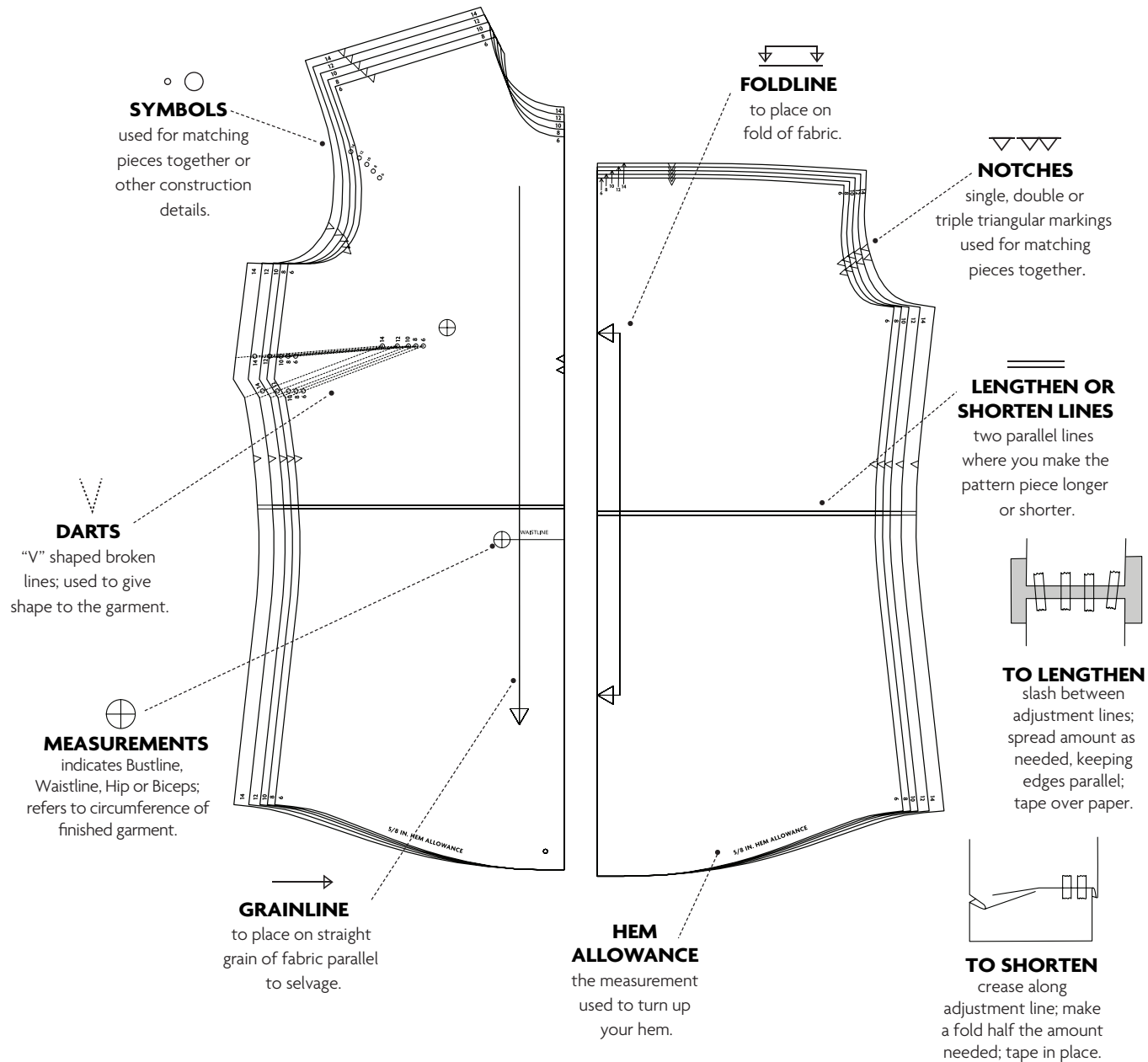
CUTTING AND MARKING

- > **SHRINK FABRIC** if not labeled pre-shrunk. Press.
- > **CIRCLE LAYOUT** for View, Size, Fabric Width.
- > Use **WITH NAP** layout for fabrics with one-way designs, nap, pile or surface shading. Because most knits have surface shading, a with nap layout is used.
- > For **DOUBLE THICKNESS (WITH FOLD)**, fold fabric with right sides together.
- > ***DOUBLE THICKNESS (WITHOUT FOLD)**, for fabrics with nap, fold fabric crosswise, right sides together. Mark as shown. Cut along crosswise fold of fabric (A). Turn upper layer 180° so arrows go in same direction and place over lower layer, right sides together (B).
- > For **SINGLE THICKNESS**, place fabric right side up. (For Fur Pile fabrics, place pile side down.)



- > Before **CUTTING**, place all pieces on fabric according to layout. Pin.
(Layouts show approximate position of pattern pieces; position may vary according to your pattern size.)
 - > ★ Cut other pieces first, allowing enough fabric to cut this piece. Open fabric. Cut piece on single layer of fabric with piece face up on right side of fabric.
 - > Cut accurately, cutting notches outward.
 - > Before removing pattern, **TRANSFER MARKINGS** and lines of construction to **WRONG SIDE** of fabric, using Pin and Chalk Pencil method or Tracing Paper and Dressmaker Wheel. Markings needed on right side of fabric should be thread traced.
- NOTE:** Broken-line boxes (a! b! c!) in layouts represent pieces cut by measurements provided.
- > Prewash your fabric using a method that's suitable for the fabric type.
 - > Fold fabric with right sides together, matching **SELVAGES**.
 - > Pin your pattern pieces to the fabric as shown below and cut them out using a sharp pair of dressmaker's shears.

PATTERN MARKINGS



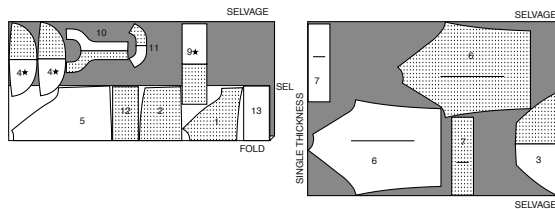
To customize your look like Sinsofmany,
see Sew Along video.

CUTTING LAYOUTS

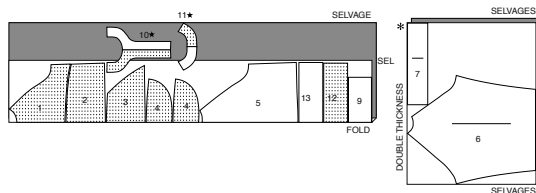
JACKET A

use pieces: 1 2 3 4 5 6 7 9 10 11 12 13

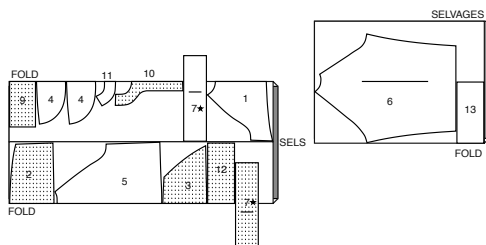
45" (115 cm)
with nap
sizes 34 36 38 40 42



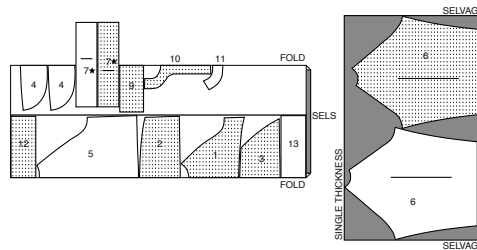
45" (115 cm)
with nap
sizes 44 46 48 50 52



60" (150 cm)
with nap
sizes 34 36 38 40 42 44 46



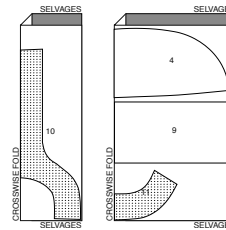
60" (150 cm)
with nap
sizes 48 50 52



INTERFACING A

use pieces: 4 9 10 11

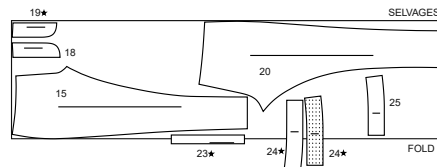
20" (51 cm)
without nap
all sizes



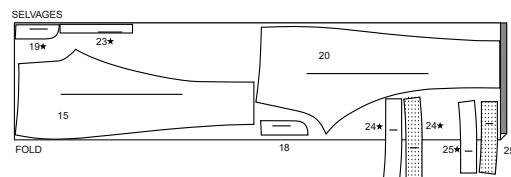
PANTS B

use pieces: 15 18 19 20 23 24 25

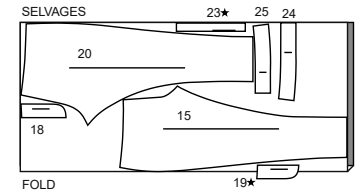
45" (115 cm)
with nap
sizes 34 36 38 40 42



45" (115 cm)
with nap
sizes 44 46 48 50 52



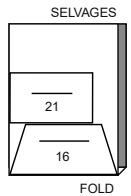
60" (150 cm)
with nap
all sizes



LINING B FRONT AND BACK POCKET

use pieces: 16 21

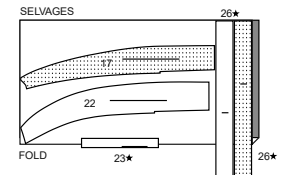
45" (115 cm)
with nap
all sizes



CONTRAST B,C CARRIERS, BACK WAISTBAND, FRONT PANEL AND BACK PANEL

use pieces: 17 22 23 26

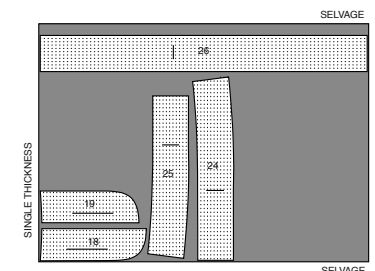
45", 60" (115, 150 cm)
with nap
all sizes



INTERFACING B,C

use pieces: 18 19 24 25 26

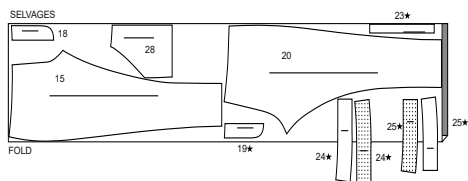
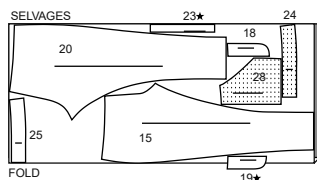
20" (51 cm)
without nap
all sizes



CUTTING LAYOUTS CONTINUED

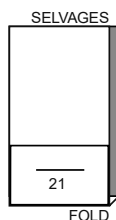
PANTS C

use piece: 15 18 19 20 23 24 25 28

45" (115 cm)
with nap
all sizes60" (150 cm)
with nap
all sizes

LINING C BACK POCKET

use piece: 21

45" (115 cm)
with nap
all sizesPATTERN PIECES WILL BE IDENTIFIED
BY NUMBERS THE FIRST TIME THEY
ARE USED.

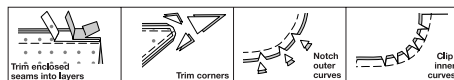
SEWING INFORMATION

 $\frac{5}{8}$ " (1.5cm) SEAM ALLOWANCES
ARE INCLUDED,

(unless otherwise indicated)

ILLUSTRATION SHADING KEY

| | | | | |
|------------|------------|-------------|--------|-------------|
| | | | | |
| Right Side | Wrong Side | Interfacing | Lining | Underlining |

Pin or baste seams, right side together,
matching notches. Fit garment before
stitching major seams.Press seam allowances flat; then open
unless otherwise stated. Clip where
necessary so they lie flat.

GLOSSARY

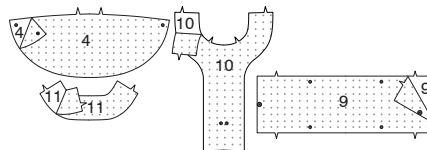
Sewing terms appearing in **BOLD
TYPE** in Sewing Instructions are
explained below.**EDGESTITCH** – Stitch close to finished
edge or seam.**FINISH** – Stitch $\frac{1}{4}$ " (6mm) from
raw edge and finish with one of the
following: (1) Pink OR (2) overcast OR
(3) Turn in along stitching and stitch
close to fold OR (4) Overlock.**NARROW HEM** – Turn in hem; press,
easing in fullness if necessary. Open
out hem. Turn in again so raw edge
is along crease; press. Turn in along
crease; stitch.**REINFORCE** – Stitch along seamline
where indicated in sewing instructions,
using small machine stitches.**SLIPSTITCH** – Slide needle through a
folded edge, then pick up a thread of
underneath fabric.**STAYSTITCH** – Stitch $\frac{1}{8}$ " (3mm) from
seamline in seam allowance [usually
 $\frac{1}{2}$ " (1.3cm) from raw edge].**TOPSTITCH** – On outside, stitch
 $\frac{1}{4}$ " (6mm) from edge, seam, or
previous stitching, using presser foot
as guide, or stitch where indicated in
instructions.**UNDERSTITCH** – Open out facing or
underside of garment; stitch to seam
allowance close to seam.

@sinsofmany

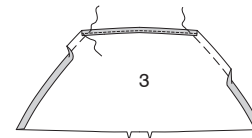
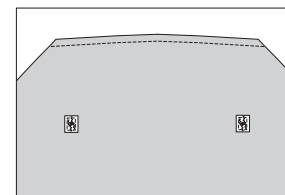
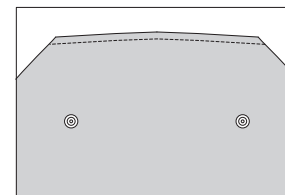
SEWING DIRECTIONS

JACKET A

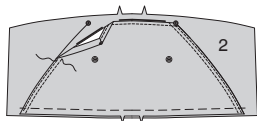
INTERFACING

1. Pin Interfacing to wrong side of each
matching fabric or lining section. Fuse,
following manufacturer's instructions.

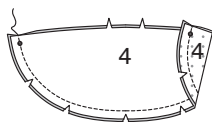
FRONT AND BACK

2. NARROW HEM upper edge of
POCKET (3). Baste along $\frac{5}{8}$ " (1.5cm)
seam allowance on side edges. Turn
under seam allowance along basting;
press.**3.** Apply socket sections of snaps
to pocket at small dots following
manufacturer's directions.
OR if you prefer, cut two pieces of hook
and loop tape $\frac{3}{4}$ " (2cm) high by
 $\frac{5}{8}$ " (1.5cm) wide. Separate the tape. Pin
loop sections of tape to pocket over the
small dots. Stitch close to edges of tape.

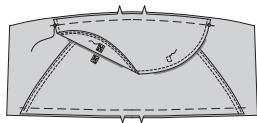
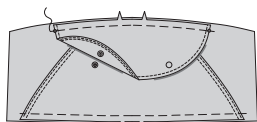
4. Pin wrong side of pocket to right side of LOWER FRONT (2) along placement line, matching large dots and notches. **TOPSTITCH** along pressed side edges and 1/4" (6mm) away. Baste raw edges together. **REINFORCE** upper corners of pocket.



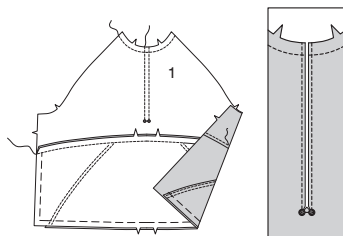
5. Pin FLAP (4) sections with right sides together. Stitch unnotched edge. Trim seam; clip curves. **UNDERSTITCH** facing.



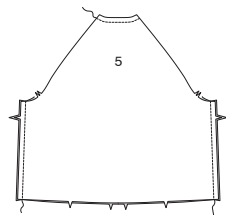
6. Turn flap; press. Baste raw edges together. **TOPSTITCH** finished edge. On outside, pin flap to lower front (over pocket), matching small dots and notches. Baste. Apply knob sections of snaps to flap at small dots following manufacturer's directions. OR if preferred, pin remaining hook sections of tape to pocket over the small dots. Stitch close to edges of tape.



7. Machine-stitch neck edge of UPPER FRONT (1) along seamline. Machine-stitch along stitching lines, pivoting with needle in fabric at small dots. Stitch lower edge of upper front to upper edge of lower front, being careful not to catch in hemmed edge of pocket. Press seam toward upper front. On outside, **TOPSTITCH** upper front along seam. On outside, slash center of upper front between the stitching lines and clip to inner corners, being careful not to clip through stitching.



8. Machine-stitch neck edge of BACK (5) along seamline. Stitch front to back at side seams.

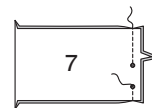


SLEEVE

9. Machine-stitch neck edge of SLEEVE (6) along seam line. Stitch underarm seam.



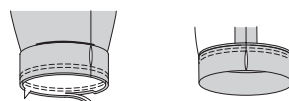
10. With right sides together, stitch underarm seam of SLEEVE CASING (7), leaving an opening between small dots, backstitching at dots to reinforce seam. Press seam open.



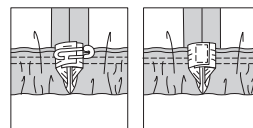
11. Fold casing in half, lengthwise, with wrong sides together, having raw edges even. Baste raw edges together. The side with the opening is the underside of the casing.



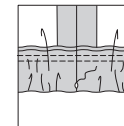
12. With the underside of casing facing you, pin casing to sleeve matching seams and notches. Stitch along seam line. Stitch again 1/4" (6mm) from first stitching within seam allowance. Trim close to second stitching. Press seam toward sleeve, pressing casing out.



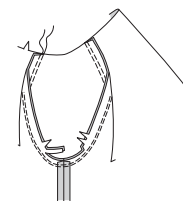
13. Cut a piece of 2" (5cm) wide elastic the length of ELASTIC GUIDE FOR SLEEVE (8). Thread elastic through opening in casing. Overlap ends and hold with a safety pin. Try on sleeve and adjust to fit. Stitch ends of elastic together securely.



14. **SLIPSTITCH** opening edges of casing together. Distribute fullness evenly.

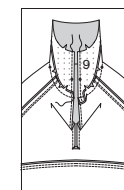


15. Turn sleeve right side out. Hold jacket wrong side out with armhole toward you. With right sides together, pin sleeve to armhole edges, matching underarm seams and notches. Baste. Stitch. Stitch again 1/8" (3mm) from first stitching. Trim seam below notches close to stitching. Press only the seam allowance, shrinking out fullness. Press toward sleeve.

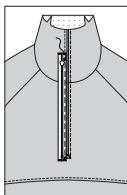


NECKBAND, ZIPPER, AND FACING

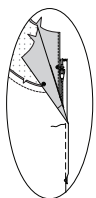
16. Clip neck edge of jacket to machine-stitching. With right sides together and raw edges even, pin neckband to jacket, matching centers, small dots, and notches. Stitch. Trim seam; clip curves. Press, pressing neckband out. Machine-stitch along 1/4" (6mm) stitching line on front edges of neckband.



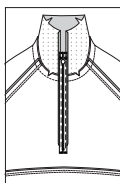
17. On outside, pin closed zipper face down on right front opening, placing center of zipper 1/4" (6mm) from stitching line and top stop just below large dot. Using an adjustable zipper foot, baste along right stitching line between the large and small dot. (Length of zipper will be adjusted later.)



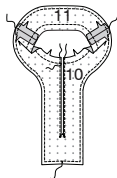
18. With right sides together, pin left side front opening over zipper, placing center of zipper 1/4" (6mm) from stitching line and top stop just below large dot. Using an adjustable zipper foot, baste along left stitching line between the large and small dot.



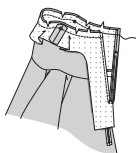
19. Turn zipper to outside, turning under seam allowance. Press lightly.



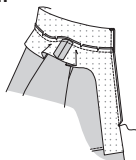
20. Machine-stitch FRONT FACING (10) along stitching lines. Slash along center and to corners in the same manner as for upper front, being careful not to slash through stitching. Stitch front facing to BACK NECK FACING (11) at shoulder edges. Machine-stitch neck edge along seamline. Clip neck edge to stitching. **FINISH** unnotched edges.



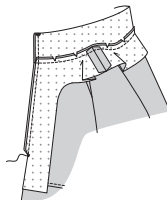
21. With right sides together and raw edges even, pin facing to upper edge of neckband, matching centers and notches, placing small dot at shoulder seam. Stitch. Trim seam; clip curves.



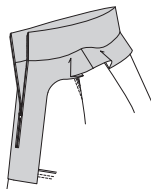
22. Open zipper. Working on one half of garment at a time, open out front opening edges of right upper front, having zipper teeth away from opening edge. Fold neckband in half lengthwise, bringing front edge of front neck facing over upper front with right sides together, matching neck seams, large dots, and small dots. Pin. Stitch right front neck edge from neckband fold to the small dot, backstitching at dot to reinforce the seam.



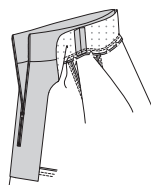
23. Open out front opening edges of left upper front, having zipper teeth away from opening edge. Fold neckband in half lengthwise, bringing front edge of front neck facing over upper front with right sides together, matching neck seams, large dots, and small dots. Pin. Stitch left front neck edge from neckband fold to the small dot, backstitching at dot to reinforce the seam.



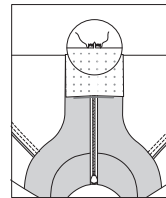
24. Turn facing to inside; press, turning out the zipper.



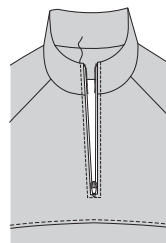
25. On inside, turn neckband and facing to back of jacket. Bring neckband seams together, as far as possible, matching notches and having raw edges even. Stitch close to seam between front armhole seams. Press facing and collar back in place.



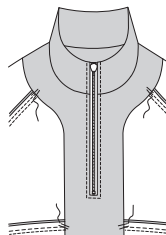
26. Fold front with RIGHT sides together along remaining stitching line, folding lower edge of facing away from seam. Stitch across remaining seam allowance. To secure zipper, stitch again over previous stitching. Trim end of zipper to 5/8" (1.5cm), if necessary. Press ends and lower edge of facing down.



27. On outside, **TOPSTITCH** front zipper edges.

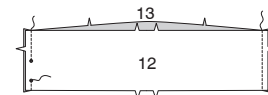


28. On inside, tack facing to jacket at armhole seams and lower front seam.

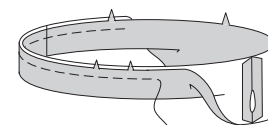


CASING

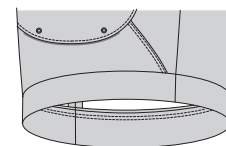
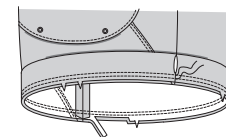
29. With right sides together, stitch FRONT CASING (12) to BACK CASING (13) at side edges, leaving an opening in left side seam between small dots, backstitching at dots to reinforce seam.



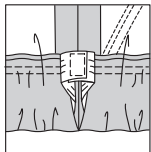
30. Press seams open. Fold casing in half, lengthwise, with wrong sides together, having raw edges even. Baste raw edges together. The side with the opening is the underside of the casing.



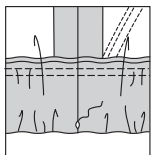
31. With the underside of casing facing you, pin casing to jacket matching centers and side seams. Stitch along seam line. Stitch again 1/4" (6mm) from first stitching within seam allowance. Trim close to second stitching. Press seam toward jacket, pressing casing out.



32. Cut a piece of 2-1/2" (6.3cm) wide elastic the length of ELASTIC GUIDE FOR LOWER EDGE (14). Thread elastic through opening in casing. Overlap ends and hold with a safety pin. Stitch ends of elastic together securely.



33. SLIPSTITCH opening edges of casing together. Distribute fullness evenly.



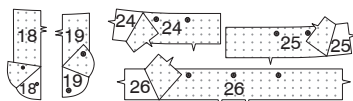
PANT B, C

NOTE: Under each sub-heading, the first View will be illustrated, unless otherwise indicated.

INTERFACING

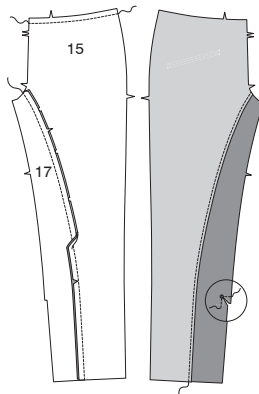
1. Pin Interfacing to wrong side of each matching fabric section. Fuse, following manufacturer's instructions.

NOTE: Use 7" (18cm) zippers for pockets and fly; use 9" (23cm) zippers for inner leg.



FRONT

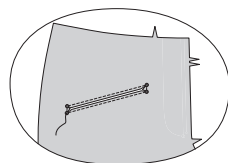
2. STAYSTITCH upper edge of FRONT (15). Machine-stitch along seam line of inner leg edge. With right sides together and raw edges even, pin front to FRONT PANEL (17), matching notches, clipping front to stitching if necessary. Stitch. Press seam toward front. On outside, **TOPSTITCH** front along seamline. **REINFORCE** front panel at lower small dot by stitching along seam line starting about 1" (2.5cm) below the small dot, stitching to the dot, pivoting at the dot and stitching to the raw edge, as shown. Clip to stitching at the small dot.



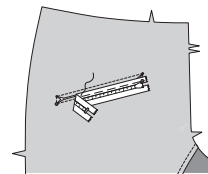
VIEW B: FRONT POCKET

NOTE: It may be necessary to adjust the length of the zipper. This will be addressed in the directions, when necessary.

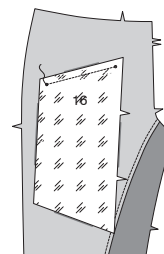
3. Stitch along stitching lines on front, pivoting with needle in fabric at small dots. Slash along solid lines, being careful not to slash through stitching.



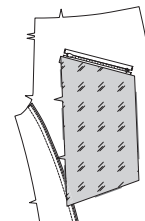
4. Pin closed zipper face down to front, with center of zipper teeth 1/4" (6mm) below the lower stitching line, placing upper end of zipper at small dot near center with ends extending over small dots. Baste between the small dots.



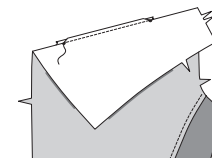
5. With right sides together, pin upper edge of FRONT POCKET (16) to lower edge of front stitching line (over zipper), matching small dots. Stitch between the small dots, backstitching at dots to reinforce the seam.



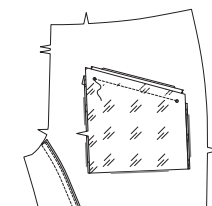
6. Turn zipper and lining to inside; press lightly.



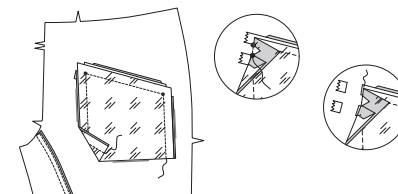
7. Turn upper edge of front down from upper stitching line with right sides together, having seam allowance of slash extending up. Pin remaining edge of zipper to front along stitching line with center of zipper teeth 1/4" (6mm) below the lower stitching line. Baste along stitching line between the small dots.



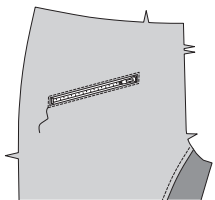
8. Fold front pocket along fold line with right sides together. Pin upper edge of pocket to seam allowance of upper stitching line (over zipper), matching small dots. Stitch between the small dots, backstitching at dots to reinforce the seam.



9. On INSIDE, with right sides together, pin front pocket side edges together, matching small dots. Stitch side edges together, catching in clipped corners, as shown. Stitch again across zipper extensions. Trim ends of zipper even with seam allowance.

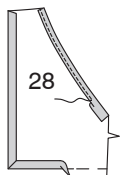


10. On outside, **EDGESTITCH** close to zipper seams, squaring stitching at ends.

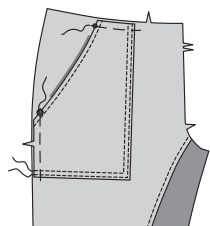


VIEW C: FRONT POCKET

11. NARROW HEM curved edge of POCKET (28). Baste along 5/8" (1.5cm) seam allowance on front and lower edges. Turn under seam allowance along basting; press.



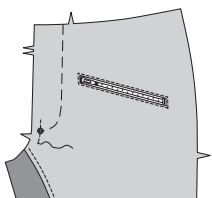
12. Pin wrong side of pocket to right side of front, matching small and large dots. **TOPSTITCH** along pressed front and lower edges and 1/4" (6mm) away. Baste raw edges together.



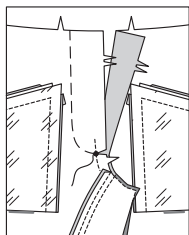
FLY AND ZIPPER

13. Transfer stitching line on left front to outside with a water-soluble fabric marking pen OR by hand-basting. This will serve as a guide for the fly stitching later.

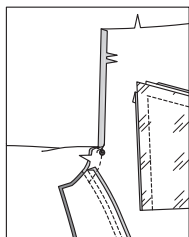
REINFORCE left front by stitching along seam line for about 1" (2.5cm) each side of large dot, stitching through the dot.



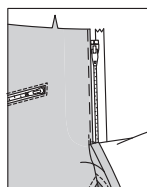
14. Stitch front sections together at center front between large dot and notch. Clip left front to reinforced large dot, being careful not to clip through stitching.



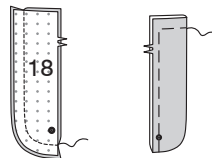
15. Turn in right front opening edge along foldline; press.



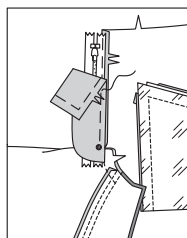
16. Place closed zipper (face up) under right front opening edge, having pressed edge close to zipper teeth and zipper stop 3/4" (2cm) from upper edge. Using a zipper foot, baste close to pressed edge.



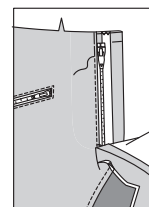
17. With right sides together and raw edges even, pin RIGHT FLY (18) sections. Stitch curved edge. Trim seam. Turn right fly right side out; press. Baste 3/8" (1cm) from raw edges. Press.



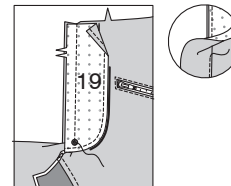
18. On inside, pin right fly to right front opening edge (over zipper), matching notches and small dots, having raw edges even. Baste along previous basting for zipper.



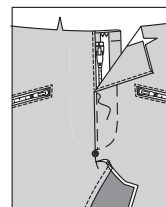
19. On outside, using a zipper foot, stitch close to pressed edge of front through all layers.



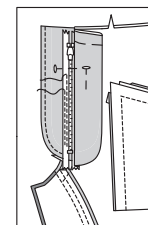
20. EDGE FINISH outer edge of LEFT FLY FACING (19). Pin fly facing to left front opening edge, matching notches, and large dots. Stitch, ending at large dot. Trim. **UNDERSTITCH** fly facing. Turn facing to inside.



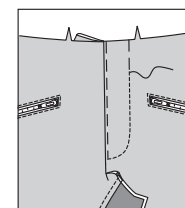
21. Lap left front over right, matching centers. Baste close to edge through all thicknesses.



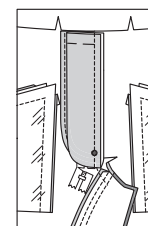
22. Pin right fly out of the way. Open out fly facing. Pin remaining zipper tape to fly facing, keeping left front free. Using a zipper foot, stitch in place close to zipper teeth and along center of zipper tape.



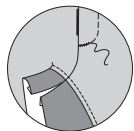
23. Turn facing down. On outside, stitch left front along stitching lines, keeping right fly free.



24. Turn right fly back in place. On inside, hand tack fly and facing together at lower edge, as shown. Trim away excess zipper tape even with lower edge of fly, if needed.



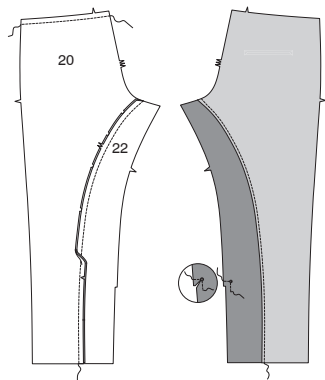
25. If desired, on outside, machine-stitch a bar tack across lower end of fly through all thicknesses.



BACK

26. STAYSTITCH upper edge of BACK (20). Machine-stitch along seam line of inner leg edge. With right sides together and raw edges even, pin back to BACK PANEL (22), matching notches, clipping back to stitching if necessary. Stitch. Press seam toward back. On outside, **TOPSTITCH** back along seamline.

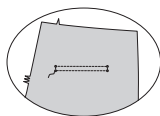
REINFORCE back panel at lower small dot by stitching along seam line starting 1" (2.5cm) below small dot, stitching to the dot, pivoting at the dot and stitching to the raw edge, as shown. Clip to stitching at the small dot.



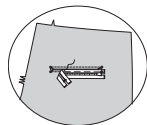
BACK POCKETS

NOTE: It may be necessary to adjust the length of the zipper. This will be addressed in the directions, when necessary.

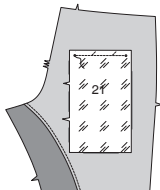
27. Stitch along stitching lines on back, pivoting with needle in fabric at small dots. Slash along solid lines, being careful not to slash through stitching.



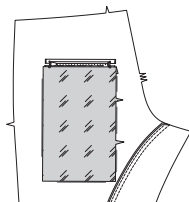
28. Pin closed zipper face down to back, with center of zipper teeth 1/4" (6mm) below the lower stitching line, placing upper end of zipper at small dot near side with ends extending over small dots. Baste between the small dots.



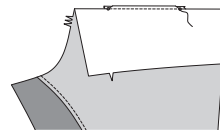
29. With right sides together, pin upper edge of BACK POCKET (21) to lower edge of back stitching line (over zipper), matching small dots. Stitch between the small dots, backstitching at dots to reinforce the seam.



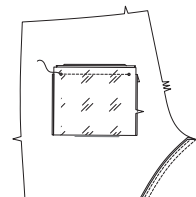
30. Turn zipper and lining to inside; press lightly.



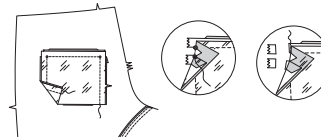
31. Turn upper edge of back down from upper stitching line with right sides together, having seam allowance of slash extending up. Pin remaining edge of zipper to back along stitching line with center of zipper teeth 1/4" (6mm) below the lower stitching line. Baste along stitching line between the small dots.



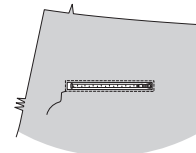
32. Fold back pocket along fold line with right sides together. Pin upper edge of pocket to seam allowance of upper stitching line (over zipper), matching small dots. Stitch between the small dots, backstitching at dots to reinforce the seam.



33. On INSIDE, with right sides together, pin back pocket side edges together, matching small dots. Stitch side edges together, catching in clipped corners, as shown. Stitch again across zipper extensions. Trim ends of zipper even with seam allowance.

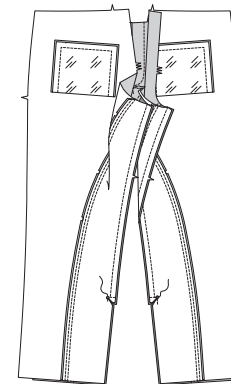


34. On outside, **EDGESTITCH** close to zipper seams, squaring stitching at ends.

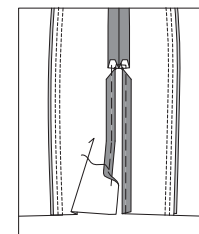


INNER LEG SEAM AND ZIPPERS

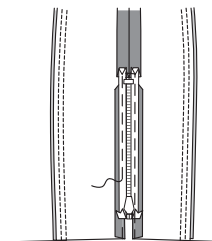
35. Stitch front to back at inner leg edges between the small dots, backstitching at dots to reinforce the seam.



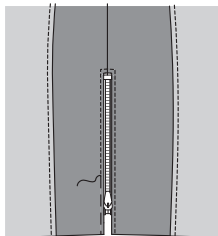
36. Press under 5/8" (1.5cm) on slot opening edges. Baste.



37. Turn under upper edge of zipper tape. Pin closed zipper face down to inner leg opening edges, with center of zipper teeth 1/4" (6mm) from pressed edges, placing upper end of zipper 1-1/4" (3.2cm) from raw edge. Baste.

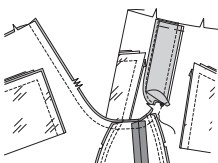


38. On outside, **EDGE STITCH** close to slot edges, squaring stitching at upper end of slot (lower end of zipper).



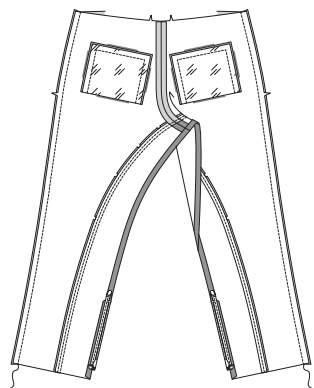
CENTER SEAM

39. Stitch pants front and pants back at center seam connecting to previous stitching.



SIDE SEAMS

40. Stitch front to back at side edges.

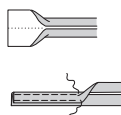


WAISTBAND AND CARRIERS

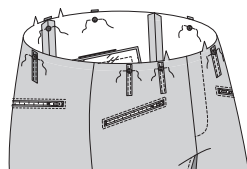
NOTE: Carriers cut of fabric will be stitched to front of pants. Carriers cut of contrast fabric will be stitched to back of pants.

41. Fold CARRIER (23) in half, lengthwise with **WRONG** sides together. Press, setting in a crease. Open out long edges of carrier and turn them to wrong side so that they meet at the crease. Press.

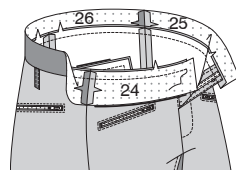
Fold carrier in half lengthwise, bringing pressed edges together. Stitch close to both long edges.



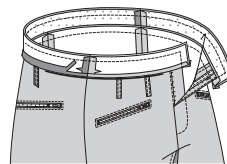
42. Cut fabric carrier into four 2-1/2" (6.3cm) long segments and contrast fabric carrier into three 2-1/2" (6.3cm) long segments. On outside, pin carriers to upper edge of pants over large dots, having raw edges even, baste.



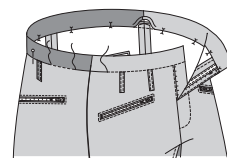
43. Pin **RIGHT FRONT WAISTBAND** (24) and **LEFT FRONT WAISTBAND** (25) to **BACK WAISTBAND** (26) at ends. Stitch. With right sides together, pin waistband band to pants, matching centers, seams and notches. Stitch. Trim seam; press band out, pressing seam toward band.



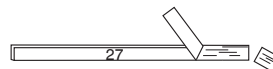
44. Stitch ends of waistband facing sections. Press under 1/2" (1.3cm) on notched edge. Trim to 1/4" (6mm). With right sides together, pin facing to waistband matching centers, having raw edges even. Stitch upper edge and ends of waistband. Trim seam and corners.



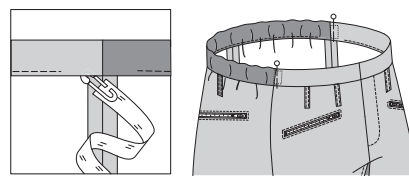
45. Turn facing to inside; press. Pin pressed edge of facing over seam, placing pins on outside. On outside, stitch in the ditch of the seam, leaving 3" (7.5cm) long openings at side seams, catching in pressed edge of facing on inside, as shown.



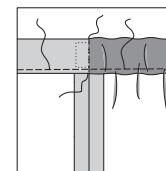
46. Cut a 1-1/2" (3.8cm) wide elastic the length of the **BACK ELASTIC GUIDE**.



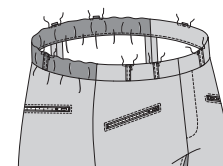
47. Attach a safety pin to one end of elastic. Thread elastic through back casing at opening, having ends extend 1/2" (1.3cm) past to seams, as shown. Pin in place, placing pins on outside. Try on pants, adjust to fit, if necessary.



48. On outside, stitch waistband over side seams, catching in elastic on inside, securely. Stitch in the ditch of the waistband seam, connecting to previous stitching.

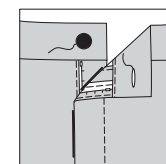


49. Press under 3/8" (1cm) on remaining ends of carriers. On outside, press carriers up and stitch pressed ends over large dots.

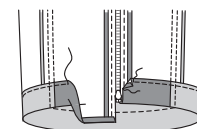


FINISHING

50. Make buttonhole in left waistband at marking. Sew button to right waistband at small dot.



51. Press up hem allowance on each pant leg. Turn under raw edge 1/4" (6mm); press. Stitch close to inner pressed edge between zipper seams. **SLIPSTITCH** hem edge to zipper.





Congrats!


You've completed your sewing adventure!

**SHARE
YOUR** look!



Post your pattern and tag us at
@knowmepatterns and use #knowmepatterns
for a chance to be featured on our social media!

Look for more Know Me PDF patterns at **[SomethingDelightful.com/know-me/](https://www.somethingdelightful.com/know-me/)**

 1-800-255-2762

© 2023 KnowMe® an IG Design Group Americas, Inc. brand. | All Rights Reserved.
Sold for individual home use only and not for commercial or manufacturing purposes.